



**HAL**  
open science

# A predictive classifier of poor prognosis in transplanted patients with juvenile myelomonocytic leukemia: a study on behalf of the Société Francophone de Greffe de Moelle et de Thérapie Cellulaire

Déborah Meyran, Chloé Arfeuille, Sylvie Chevret, Quentin Neven, Aurélie Caye-Eude, Elodie Lainey, Arnaud Petit, Fanny Rialland, Gérard Michel, Dominique Plantaz, et al.

## ► To cite this version:

Déborah Meyran, Chloé Arfeuille, Sylvie Chevret, Quentin Neven, Aurélie Caye-Eude, et al.. A predictive classifier of poor prognosis in transplanted patients with juvenile myelomonocytic leukemia: a study on behalf of the Société Francophone de Greffe de Moelle et de Thérapie Cellulaire. *Haematologica*, 2024, Online ahead of print. 10.3324/haematol.2023.284103 . hal-04645180

**HAL Id: hal-04645180**

**<https://univ-rennes.hal.science/hal-04645180v1>**

Submitted on 8 Nov 2024

**HAL** is a multi-disciplinary open access archive for the deposit and dissemination of scientific research documents, whether they are published or not. The documents may come from teaching and research institutions in France or abroad, or from public or private research centers.

L'archive ouverte pluridisciplinaire **HAL**, est destinée au dépôt et à la diffusion de documents scientifiques de niveau recherche, publiés ou non, émanant des établissements d'enseignement et de recherche français ou étrangers, des laboratoires publics ou privés.



Distributed under a Creative Commons Attribution - NonCommercial 4.0 International License

# A predictive classifier of poor prognosis in transplanted patients with juvenile myelomonocytic leukemia: a study on behalf of the Société Francophone de Greffe de Moelle et de Thérapie Cellulaire

Déborah Meyran,<sup>1,2,3</sup> Chloé Arfeuille,<sup>4,5</sup> Sylvie Chevret,<sup>6</sup> Quentin Neven,<sup>1</sup> Aurélie Caye-Eude,<sup>4</sup> Elodie Lainey,<sup>5,7</sup> Arnaud Petit,<sup>8</sup> Fanny Riolland,<sup>9</sup> Gérard Michel,<sup>10</sup> Dominique Plantaz,<sup>11</sup> Charlotte Jubert,<sup>12</sup> Alexandre Theron,<sup>13,14</sup> Virginie Gandemer,<sup>15</sup> Marie Ouachée-Chardin,<sup>16</sup> Catherine Paillard,<sup>17</sup> Bénédicte Bruno,<sup>18</sup> Nimrod Buchbinder,<sup>19</sup> Cécile Pochon,<sup>20</sup> Charlotte Calvo,<sup>1</sup> Mony Fahd,<sup>1</sup> André Baruchel,<sup>1,21</sup> Hélène Cavé,<sup>4,5</sup> Jean-Hugues Dalle<sup>1,21</sup> and Marion Strullu<sup>1,5</sup>

<sup>1</sup>Service d'Hémo-Immunologie Pédiatrique, Hôpital Robert Debré, GHU AP-HP Nord-Université Paris Cité, Paris, France; <sup>2</sup>Children's Cancer Centre, Royal Children's Hospital, Parkville, Victoria, Australia; <sup>3</sup>Sir Peter MacCallum Department of Oncology, University of Melbourne, Melbourne, Australia; <sup>4</sup>Service de Génétique Moléculaire, Hôpital Robert Debré, GHU AP-HP Nord-Université Paris Cité, Paris, France; <sup>5</sup>INSERM UMR\_S1131, Institut Universitaire d'Hématologie, Université Paris Cité, Paris-Cité, Paris, France; <sup>6</sup>Service de Biostatistique et Information Médicale, Hôpital Saint Louis, GHU AP-HP Nord-Université Paris Cité, Paris, France; <sup>7</sup>Service d'Hématologie Biologique, Hôpital Robert Debré, GHU AP-HP Nord-Université Paris Cité, Paris, France; <sup>8</sup>Service d'Hémo-Immunologie Pédiatrique, Hôpital Armand Trousseau, Université Paris Sorbonne, Paris, France; <sup>9</sup>Service d'Onco-Hématologie Pédiatrique, CHU de Nantes, Nantes, France; <sup>10</sup>Service d'Hématologie Pédiatrique, Assistance Publique des Hôpitaux de Marseille AP-HM, Marseille, France; <sup>11</sup>Service d'Onco-Hématologie Pédiatrique, CHU de Grenoble, Grenoble, France; <sup>12</sup>CHU Bordeaux, Service d'Hématologie Oncologie Pédiatrique, F-33000 Bordeaux, France; <sup>13</sup>Department of Pediatric Oncology and Hematology, CHU CHU Montpellier, Montpellier, France; <sup>14</sup>IRMB, University of Montpellier, INSERM, Montpellier, France; <sup>15</sup>Service d'Onco-Hématologie Pédiatrique, CHU de Rennes, Rennes, France; <sup>16</sup>Service d'Onco-Hématologie Pédiatrique, IHOPE, Lyon, France; <sup>17</sup>Service de Pédiatrie, Hôpital de Hautepierre, Strasbourg, France; <sup>18</sup>Service de Pédiatrie, Hôpital de Jeanne de Flandre, Lille, France; <sup>19</sup>Service d'Onco-Hématologie Pédiatrique, CHU de Rouen, Rouen, France; <sup>20</sup>Service d'Onco-Hématologie Pédiatrique, Hôpital d'Enfants de Brabois, Vandoeuvre lès Nancy, France and <sup>21</sup>Unité Inserm U976, Université Paris Cité, Paris-Cité, Paris, France

**Correspondence:** M. Strullu  
marion.strullu@aphp.fr

**Received:** August 17, 2023.  
**Accepted:** February 13, 2024.  
**Early view:** February 22, 2024.

<https://doi.org/10.3324/haematol.2023.284103>

©2024 Ferrata Storti Foundation  
Published under a CC BY-NC license



## Abstract

Juvenile myelomonocytic leukemia (JMML) is an aggressive pediatric myeloproliferative neoplasm requiring hematopoietic stem cell transplantation (HSCT) in most cases. We retrospectively analyzed 119 JMML patients who underwent first allogeneic HSCT between 2002 and 2021. The majority (97%) carried a RAS-pathway mutation, and 62% exhibited karyotypic alterations or additional mutations in *SETBP1*, *ASXL1*, *JAK3* and/or the RAS pathway. Relapse was the primary cause of death, with a 5-year cumulative incidence of 24.6% (95% CI: 17.1-32.9). Toxic deaths occurred in 12 patients, resulting in treatment-related mortality (TRM) of 9.0% (95% CI: 4.6-15.3). The 5-year overall (OS) and event-free survival were 73.6% (95% CI: 65.7-82.4) and 66.4% (95% CI: 58.2-75.8), respectively. Four independent adverse prognostic factors for OS were identified: age at diagnosis >2 years, time from diagnosis to HSCT  $\geq$ 6 months, monocyte count at diagnosis  $>7.2 \times 10^9/L$ , and the presence of additional genetic alterations. Based on these factors, we proposed a predictive classifier. Patients with 3 or more predictors (21% of the cohort) had a 5-year OS of 34.2%, whereas those with none (7%) had a 5-year OS of 100%. Our study demonstrates improved transplant outcomes compared to prior published data, which can be attributed to the synergistic impacts of a low TRM and a reduced, yet still substantial, relapse incidence. By integrating genetic information with clinical and hematologic features, we have devised a predictive classifier. This classifier effectively identifies a subgroup of patients who are at a heightened risk of unfavorable post-transplant outcomes who would benefit from novel therapeutic agents and post-transplant strategies.

## Introduction

Juvenile myelomonocytic leukemia (JMML) is an aggressive hematologic malignancy of early childhood. It results from the hyperactivation of the RAS signal transduction pathway mainly caused by mutations of *PTPN11*, *KRAS*, *NRAS*, *RRAS*, *RRAS2*, *CBL*, *SH2B3* and *NF1*.<sup>1-3</sup> Except for a small subset of patients who exhibit spontaneous remissions, the disease usually progresses and leads to death within months of diagnosis. Unlike acute leukemia, intensive chemotherapy is insufficient to eradicate the disease and hematopoietic stem cell transplantation (HSCT) is the only curative treatment for most patients.<sup>4,5</sup> However, the rarity of the disease has resulted in only a few large cohorts of HSCT being reported over the last 20 years.<sup>6-10</sup> These studies showed that JMML is associated with a poor outcome, with a 5-year overall survival (OS) ranging from 52% to 72% due to high-risk post-transplant relapse combined with high treatment-related mortality (TRM). Predictive variables of poor outcome identified across these trials encompass age at diagnosis and at transplant, abnormal karyotype and HLA disparities. Previously published studies including non-transplanted patients also identified other predictive factors of death and relapse, such as low platelet count and high fetal hemoglobin level (HbF).<sup>11,12</sup> Since then, progress has been made in deciphering the genomic landscape of JMML, contributing to a deeper understanding of the marked heterogeneity that characterizes this disease.<sup>13,14</sup> Indeed, certain initiating mutations, such as *NF1* or *PTPN11*, have been shown to correlate with disease aggressiveness. Furthermore, the occurrence of additional genetic mutations, including double RAS mutations, *ASXL1*, *SETBP1* or *JAK3*, while uncommon in JMML, further worsens the overall prognosis of patients.<sup>13-16</sup>

However, it is worth noting that most previously published studies on HSCT in JMML have provided either incomplete or no genetic information. Consequently, the recent molecular insights associated with aggressive disease have not been challenged within a cohort of transplanted JMML patients. In this study, we report the outcome of 119 children with JMML who underwent HSCT over the past 20 years and were genetically characterized. We evaluated the impact of previously described parameters, as well as the role of the initiating RAS mutation and additional *ASXL1*, *SETBP1* and *JAK3* mutations on prognosis.

## Methods

### Patients and data collection

This study investigated 119 consecutive children diagnosed with JMML who received a first allogeneic HSCT between June 2002 and August 2021 in France (Table 1). All patients met the World Health Organization (WHO) consensus criteria for JMML.<sup>2</sup> Patients' data were collected retrospectively

using the PROMISE database of the European Bone Marrow Transplant group (EBMT) through the Société Francophone de Greffe de Moelle et de Thérapie Cellulaire (SFGM-TC). JMML patient samples, bone marrow (BM) and/or peripheral blood (PB), were collected on EDTA at diagnosis. Genomic DNA was extracted from mononucleated cells. Mutational screening using bi-directional Sanger and/or next generation sequencing (NGS) of exons and their flanking intron-exon boundaries was performed on genomic DNA as part of the classic diagnostic workup for JMML, and included *NRAS*, *KRAS*, *PTPN11*, *CBL*, *NF1*, *SH2B3*, *RRAS*, *RRAS2*, *ASXL1*, *SETBP1* and *JAK3*, as previously described.<sup>13,17</sup> Written informed consent for the study was provided by the patients or their guardians in accordance with the Declaration of Helsinki (IRB: 00006477).

### Definitions and endpoints

Elevated HbF levels at the time of JMML diagnosis were defined as follows:  $\geq 10\%$  for children aged  $\geq 6$  to  $< 12$  months, and  $\geq 1\%$  for children aged  $\geq 12$  months. HbF levels were considered not interpretable for children under six months old. Relapse was defined as the recurrence of JMML, clinically and morphologically on PB and/or BM analysis, after HSCT. HLA matching and engraftment definitions are provided in the *Online Supplementary Methods*. Acute and chronic graft-versus-host disease (GvHD) were diagnosed and graded by each transplantation center according to conventional criteria.<sup>18,19</sup> Treatment of GvHD was based on the protocols used in each center.

Treatment-related mortality was defined as any death occurring from any cause but disease relapse. One patient died of *Pneumocystis jirovecii* lung infection after JMML relapse while waiting for a second transplant. We considered the death of this patient as related to the HSCT. Event-free survival (EFS) was defined as a composite outcome, including relapse and death, whichever occurred first. In exploratory analyses, we also considered secondary allograft and secondary malignancy as additional events defining a 'stringent EFS'.

### Statistical analysis

Time-to-event outcomes were measured from the date of transplant to the date of event or date of last follow-up, with a cut-off date of December 30, 2021. TRM and relapse were considered as mutually competing risk events, while death was considered a competing risk for engraftment and GvHD. Engraftment and acute GvHD were arbitrarily censored at 100 days.

The OS and EFS were estimated using Kaplan-Meier estimator. For competing risk analyses of TRM, relapse and GvHD, cumulative incidence functions were estimated.<sup>20</sup> Factors associated with outcomes were analyzed using the Fine and Gray model for GvHD, proportional hazards models for the cause-specific hazard for relapse and TRM, and Cox proportional hazards models for EFS and OS.<sup>21,22</sup>

The proportional hazards assumption was checked by examination of Schoenfeld residuals and Grambsch and Therneau lack-of-fit test.<sup>23</sup>

All tests were two-sided.  $P \leq 0.05$  was considered statistically significant. The analyses were performed using the R statistical software version 4.1.1.

## Results

### Patients' characteristics at juvenile myelomonocytic leukemia diagnosis and pre-transplant treatment

Table 1 provides a summary of patients' characteristics

(N=119). At diagnosis, 64 patients (54%) were <2 years of age. JMML occurred in the setting of a germline predisposing condition in 16 patients (14%): type 1 neurofibromatosis (N=8), Casitas B-lineage lymphoma (CBL) syndrome (N=7), and SH2B3 germline biallelic mutation (N=1). A RAS-pathway mutation was observed in 115 out of 118 patients (97%). The most commonly mutated gene was *PTPN11*, observed in 40% of patients, followed by *KRAS* (22%), *NRAS* (19%), *NF1* (7%), *CBL* (6%), and other less frequent mutations (3%; including *RRAS*, *RRAS2* and *SH2B3*).

The time from diagnosis to HSCT varied among patients, ranging from 1.8 to 44.3 months, but remained consistent throughout the study period and across the genetic sub-

**Table 1.** Patients' characteristics at diagnosis.

	N of patients assessed	Value
M/F ratio	-	2.2
Female, N (%)	-	37 (31.1)
Male, N (%)	-	82 (68.9)
Median age at diagnosis in years (IQR)	119	1.6 (0.7-3.2)
Hepatomegaly, N (%)	117	89 (76.1)
Splenomegaly, N (%)	117	109 (93.2)
PB cell count x10 <sup>9</sup> /L, median (IQR)	-	-
White blood cells	118	25.5 (16.4-46.8)
Platelets	116	59 (33-110)
Platelets <33x10 <sup>9</sup> /L, N (%)	116	30 (25.9)
Monocytes	119	5.1 (2.7-7.2)
Hemoglobin, g/dL	117	8.9 (8-10.3)
Presence of myeloid precursors, N (%)	116	106 (91.4)
Presence of blast cells, N (%)	115	80 (69.6)
BM blast percentage, median (range)	118	4 (0-37)
Elevated HbF,* N (%)	88	73 (82.9)
Karyotypic alterations, N (%)	113	45 (39.8)
Del7/7q	-	26 (23.0)
Other aneuploidies	-	19 (16.8)
Normal	-	68 (60.2)
RAS-pathway mutations, N (%)	118	-
<i>PTPN11</i>	-	47 (39.8)
<i>KRAS</i>	-	26 (22.0)
<i>NRAS</i>	-	23 (19.5)
<i>CBL</i>	-	7 (5.9)
<i>NF1</i>	-	8 (6.8)
Other <sup>§</sup>	-	4 (3.4)
No mutation	-	3 (2.5)
Additional mutations, N (%)	114	39 (34.2)
<i>JAK3</i>	-	10 (8.8)
<i>SETBP1</i>	-	9 (7.9)
<i>ASXL1</i>	-	11 (9.6)
Double RAS pathway mutation	-	25 (21.9)
Additional alterations,** N (%)	111	-
0	-	42 (37.8)
1	-	69 (62.2)
2	-	20 (18.0)

AML: acute myeloid leukemia; BM: bone marrow; F: female; HbF: fetal hemoglobin; IQR: interquartile range; M: male; N: number; PB: peripheral blood. \*For patients aged  $\geq 6$  months. \*\*0, 1 or 2 alterations among the following genes: *ASXL1*, *JAK3*, *SETBP1*, or double RAS mutation or karyotype anomaly. <sup>§</sup>Other mutations include *RRAS*, *RRAS2* and *SH2B3*.

groups (Table 2, *Online Supplementary Figure S1*). Prior to conditioning regimen and transplant, patients received either no treatment (N=13, 11%), low-dose chemotherapy (N=77, 65%; including 6-mercaptopurine, azacytidine [N=8] and low-dose cytarabine), or acute myeloid leukemia-type (AML-type) chemotherapy (N=28, 23.7%) at the physician's discretion (Table 2). The pre-HSCT strategies were uniformly distributed among the *NF1*, *PTPN11*, *KRAS*, and *NRAS* groups, while CBL patients exclusively received low-intensity treatment and those without mutation, only intensive chemotherapy (*Online Supplementary Figure S1*).

### Transplant, engraftment and graft-versus-host disease occurrence

Transplant characteristics are described in Table 2. All patients underwent myeloablative conditioning regimens, with the majority receiving busulfan / fludarabine / melphalan (Bu/Flu/Mel, N=46) or busulfan / cyclophosphamide / melphalan (Bu/Cy/Mel, N=41) (Table 2, *Online Supplementary Table S1*). The Bu/Cy/Mel and Bu/Flu/Mel conditioning regimens were administered at the median year of 2007 (range, 2002-2019) and 2016 (range, 2010-2021), respectively. GvHD prophylaxis according to donor type is provided in

**Table 2.** Pre-transplant treatment and transplant characteristics.

	N of patients assessed	Value
Pre-HSCT treatment, N (%)	118	-
Low-dose chemotherapy	-	77 (65.3)
AML-like chemotherapy	-	28 (23.7)
No chemotherapy	-	13 (11.0)
Splenectomy, N (%)	119	5 (4.2)
Median age at HSCT in years (IQR)	119	2.5 (1.5-3.9)
Median interval from diagnosis to HSCT in months (IQR)	-	5.8 (4.2-8.6)
Donor, N (%)	119	-
Matched sibling	-	24 (20.2)
Haploidentical	-	4 (3.4)
Matched unrelated	-	46 (38.7)
Mismatched unrelated	-	45 (37.8)
Source of cells, N (%)	119	-
Cord blood	-	39 (32.7)
Bone marrow	-	70 (58.8)
Peripheral blood	-	10 (8.4)
Donor/recipient gender, N (%)	114	-
Female/Female	-	15 (13.2)
Female/Male	-	22 (19.3)
Male/Female	-	28 (24.6)
Male/Male	-	49 (43.0)
Donor/recipient CMV status, N (%)	115	-
Negative/Negative	-	57 (49.6)
Negative/Positive	-	19 (16.5)
Positive/Negative	-	19 (16.5)
Positive/Positive	-	20 (17.4)
Conditioning, N (%)	119	-
Bu/Cy/Mel	-	41 (34.4)
Bu/Flu/Mel	-	46 (38.7)
Other	-	32 (26.9)
Total body irradiation, N (%)	-	3 (2.5)
Anti-thymoglobulin, N (%)	-	57 (47.9)
GvHD prophylaxis	117	-
CsA + MTX	-	41 (35.0)
CsA	-	33 (28.2)
CsA + corticosteroids	-	27 (23.1)
CsA + MMF	-	10 (8.5)
CsA + other combinations	-	6 (5.1)

AML: acute myeloid leukemia; Bu/Cy/Mel: busulfan / cyclophosphamide / melphalan; Bu/Flu/Mel: busulfan / fludarabine / melphalan; CMV: cytomegalovirus; CsA: cyclosporin A; GvHD: graft-versus-host disease; HSCT: hematopoietic stem cell transplantation; IQR: interquartile range; MMF: mycophenolate mofetil; MTX: methotrexate; N: number.

*Online Supplementary Table S2.*

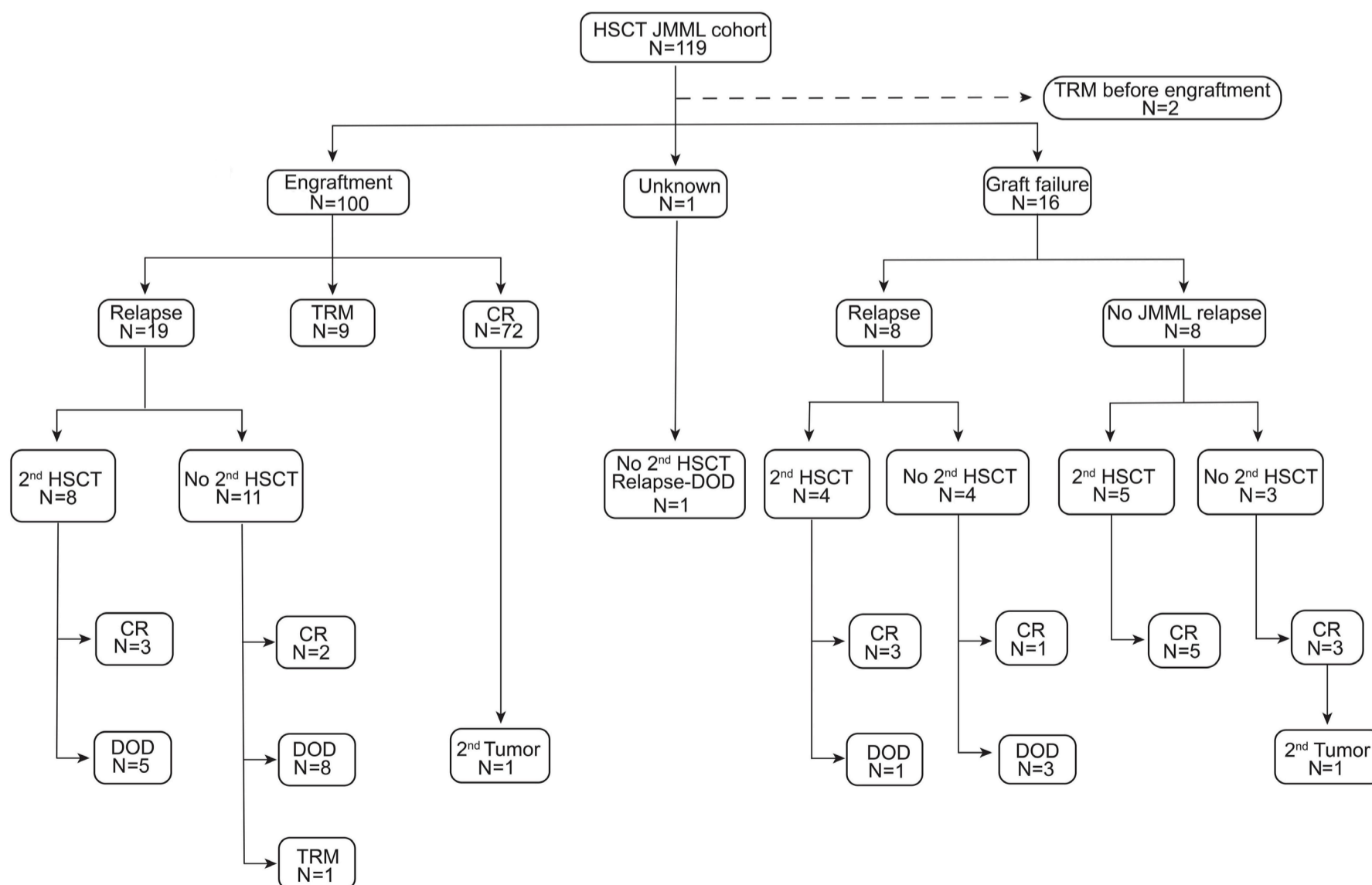
Of the 116 patients assessable for engraftment, 100 showed sustained engraftment (Figure 1). The median time to neutrophil recovery was 23 days (range, 12-56), and the median time to a self-sustained platelet count higher than  $50 \times 10^9/L$  was 43 days (range, 14-160). Sixteen patients experienced either primary (N=9) or secondary (N=7) graft failure after a median time of four months (range, 2-10). Complete loss of chimerism was concomitant with relapse in 4/16 patients (1 patient with primary and 3 patients with secondary graft failure) (*Online Supplementary Figure S2*). Patients who encountered graft failure exhibited a higher prevalence of *CBL* mutations, HLA disparities, cord blood source, and alternative conditioning regimens (other than Bu/Cy/Mel or Bu/Flu/Mel) compared to the rest of the cohort (*Online Supplementary Table S3*).

Acute GvHD grade 2-4 was observed in 63 patients (100-day cumulative incidence 53.8%, 95% CI: 44.4-62.3) and acute GvHD grade 3-4 in 38 patients (100-day cumulative incidence 31.9%, 95% CI: 23.7-40.4) (*Online Supplementary Figure S3*). Univariate analyses identified cytomegalovirus (CMV) status (donor positive / recipient negative) and the absence of elevated HbF as risk factors for developing grade 2-4 acute GvHD, and the *NRAS* mutation as a risk

factor for grade 3-4 acute GvHD (*Online Supplementary Table S4*). Chronic GvHD was observed in 42 patients (with a 36-month cumulative incidence of 36.0%, 95% CI: 27.2-44.9) (*Online Supplementary Figure S3*). Twenty-four had extensive disease and 17 had limited disease (unknown for 1). Only the presence of a mismatched relative HLA status of the donor was significantly associated with the onset of chronic GvHD while having *NF1*, *KRAS*, and no/other mutation appeared to be protective factors (*Online Supplementary Table S4*). The occurrence of acute GvHD grade 3-4 did not significantly impact the 5-year EFS, which was 69.0% (95% CI: 56.8-84.0) with acute GvHD, compared to 65.4% without (95% CI: 54.5-78.6) ( $P=0.72$ ). In contrast, the occurrence of chronic GvHD led to a reduction in the incidence of relapse or death, although not statistically significant, with a 5-year EFS of 78.8% (95% CI: 64.7-96.1) with chronic GvHD versus 68.3% without (95% CI: 59.5-78.4) ( $P=0.09$ ) (*Online Supplementary Figure S3*).

**Patient outcome**

The median follow-up after transplant was 59.5 months (IQR: 21.7-118.6). The 5-year OS was 73.6% (95% CI: 65.7-82.4), and the 10-year OS 72.2% (95% CI: 64.1-81.4) (Figure 2). Twenty-eight patients relapsed after a median time of 4.6



**Figure 1. Flow chart of the transplanted juvenile myelomonocytic leukemia cohort.** CR: complete remission; DOD: dead of disease; HSCT: hematopoietic stem cell transplant; JMML: juvenile myelomonocytic leukemia; N: number; TRM: treatment-related mortality.

months (range: 0.5-43.6) from HSCT, resulting in a 5-year cumulative incidence of relapse (CIR) of 24.6% (95% CI: 17.1-32.8). Twelve of them (43%) received a second allogeneic transplant, including 6 with the same donor. Six patients remained disease-free over a prolonged post-transplant follow up (median 7 years, range 5-17) while 6 patients relapsed once again (Figure 1). Five died of disease; none from TRM. Time to relapse, time to second transplant, type of donor and conditioning regimen did not differ between the 2 groups. Of note, 4/6 who did not relapse developed grade 2-4 acute GvHD while it occurred in 1/6 patients in the relapse group. Among the 16 patients who relapsed but did not receive a 2<sup>nd</sup> transplant, 3 are still alive at three, eight and nine years after HSCT. Patient #192, carrying a *PTPN11* mutation, received 7 cycles of azacitidine. Patient #44, without any identified mutation, received weekly etoposide injections for three months, followed by rapamycin until the 6<sup>th</sup>-month post HSCT. Finally, patient #55, with a *CBL* mutation, achieved CR within a few months of a course of 6-mercaptopurine.

Twelve patients died from transplant toxicity with a median time of 2.9 months (range, 23 days-67.2 months) resulting in an estimated TRM of 9.0% (95% CI: 4.6-15.3). Toxic causes of deaths included severe GvHD + associated with disseminated viral or bacterial infections (N=5), infections (N=4), acute hepatitis of unknown origin (N=1), sinusoidal obstruction syndrome (SOS) (N=1), and thrombotic microangiopathy (N=1). SOS was observed in 32 patients (26.9%). Of the 16 patients who did not engraft, 9 underwent a second transplant within a year, in the absence of relapse (N=5) or after JMML relapse (N=4) (Figure 1, *Online Supplementary Figure S2*). Among the 7 patients who did not receive a subsequent transplant, 3 died of disease recurrence. The remaining 4 patients, comprising one *CBL* patient and 3 *KRAS* patients, maintained sustained JMML remission with autologous reconstitution. None had undergone splenectomy before HSCT. The *KRAS* patients have been followed up for five, eight, and ten years.

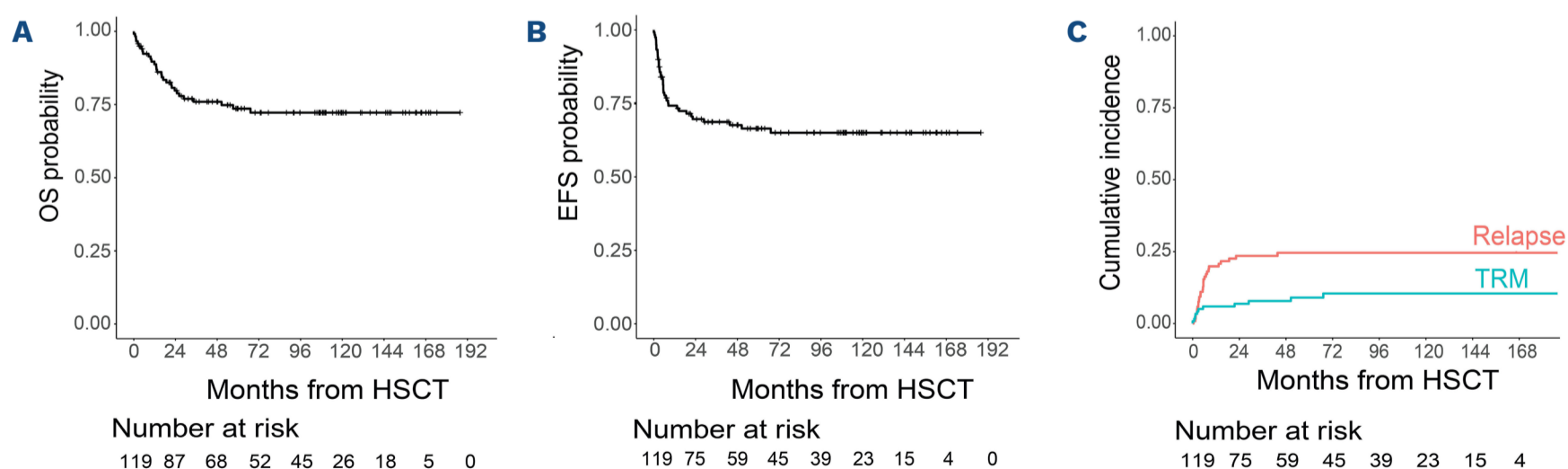
Two patients developed secondary malignancies. One pa-

tient with a *KRAS* mutation, who experienced graft failure, developed T-cell precursor acute lymphoblastic leukemia (ALL) seven years post HSCT while still in autologous remission. Remarkably, the same *KRAS p.Gly13Cys* mutation detected in the patient's JMML cells was also identified in the acute lymphoblastic leukemia (ALL) blast cells. Another patient, who carried a *PTPN11* mutation, developed AML with minimal differentiation four years after transplant. The *PTPN11 p.Ala72Val* mutation initially detected in JMML was also found in the AML blasts.

Overall, 39 patients experienced an event, resulting in a 5-year EFS at 66.4% (95% CI: 58.2-75.8), and a 10-year EFS at 65.0% (95% CI: 56.5-74.7) (Figure 2). Also considering second transplants for graft failure without relapse and secondary malignancies as events, the 5-year 'stringent EFS' was estimated at 63.6% (95% CI: 55.3-73.3) (*Online Supplementary Figure S4*).

### Prognostic factors for overall survival, event-free survival, relapse and treatment-related mortality

Table 3 presents the univariate analysis of the patients' characteristics that influence the outcomes. Age at diagnosis or age at transplant >2 years, as well as a monocyte count at diagnosis >3<sup>rd</sup> quartile (>7.2x10<sup>9</sup>/L), were associated with a lower rate of OS, EFS, and 'stringent EFS' (Table 3, Figure 3, *Online Supplementary Table S5*). The negative effect of monocyte count on survival was linked to a higher incidence of relapse (Figure 3). Monocytes >7.2x10<sup>9</sup>/L were associated with higher white blood cell, neutrophil, and lymphocyte counts, as well as a higher BM blast percentage but were not correlated with platelet count, HbF levels, cytogenetic features, or molecular features (*Online Supplementary Table S6*). Although patients with *NF1* mutations tended to show worse outcomes, no significant association was found between RAS initiating variants and OS, EFS, or cumulative incidence of relapse (CIR) (Figure 3). Considered individually, abnormal karyotype, pathogenic variants of *SETBP1*, *ASXL1*, *JAK3* or additional *RAS* mutation had no impact on outcome. However, when analyzed collectively, the presence of any



**Figure 2. Estimated outcomes of the 119 transplanted patients.** Overall survival (OS) (A) and event-free survival (EFS) (B) were analyzed using Kaplan-Meier methodology. Cumulative incidence function for relapse and treatment-related mortality (TRM) (C).

**Table 3.** Univariable predictive analyses of the outcomes based on Cox models.

Outcomes	N of patients	OS %	EFS %	Relapse %	TRM %
		60-month OS (95% CI)	60-month EFS (95% CI)	60-month cumulative incidence (95% CI)	60-month cumulative incidence (95% CI)
Overall	119	73.6 (65.7-82.4)	66.4 (58.2-75.8)	24.6 (17.1-32.8)	9.0 (4.6-15.3)
N of events	-	30 deaths	39 events	28 relapses	11 toxic deaths
Age at diagnosis > 2 yr	55	3.08 (1.41-6.74) <sup>+</sup>	2.34 (1.22-4.51) <sup>+</sup>	1.99 (0.93-4.24)	3.68 (0.97-13.9)
Platelets <33x10 <sup>9</sup> /L	28	0.88 (0.36-2.18)	1.01 (0.48-2.15)	0.93 (0.38-2.33)	1.21 (0.32-4.58)
Monocytes > Q3 (7.2 x10 <sup>9</sup> /L)	30	2.21 (1.06-4.60) <sup>+</sup>	2.38 (1.24-4.54) <sup>+</sup>	2.90 (1.37-6.14) <sup>+</sup>	1.36 (0.36-5.15)
Elevated HbF*	73/88	0.84 (0.35-1.97)	1.30 (0.63-2.70)	0.76 (0.32-1.80)	1.23 (0.27-5.70)
Abnormal karyotype	45	1.77 (0.84-3.75)	1.45 (0.76-2.77)	1.82 (0.84-3.96)	1.67 (0.51-5.47)
RAS-pathway mutations					
<i>PTPN11</i>	46	1.00	1.00	1.00	1.00
<i>CBL</i>	7	NA	0.38 (0.05-2.85)	0.43 (0.04-4.13)	NA
<i>KRAS</i>	26	0.35 (0.10-1.21)	0.44 (0.16-1.20)	0.29 (0.06-1.44)	0.50 (0.10-2.49)
<i>NF1</i>	8	2.79 (0.99-7.88)	1.98 (0.73-5.38)	2.10 (0.50-8.83)	NA
<i>NRAS</i>	23	1.38 (0.57-3.33)	1.00 (0.43-2.32)	0.70 (0.17-2.91)	1.05 (0.26-4.18)
No/other	9	0.35 (0.05-2.69)	0.92 (0.27-3.13)	0.71 (0.20-2.56)	NA
Additional mutations					
<i>JAK3</i>	10	1.55 (0.54-4.47)	2.00 (0.84-4.81)	0.69 (0.26-1.87)	1.20 (0.15-9.41)
<i>SETBP1</i>	9	2.58 (0.98-6.77)	2.38 (0.99-5.70)	0.74 (0.22-2.53)	4.68 (1.24-17.69) <sup>+</sup>
<i>ASXL1</i>	11	1.65 (0.57-4.74)	1.09 (0.39-3.08)	0.70 (0.20-2.43)	0.96 (0.12-7.50)
Double RAS pathway mutation	25	0.96 (0.39-2.36)	0.94 (0.43-2.06)	0.86 (0.29-2.53)	2.10 (0.62-7.19)
Additional alteration**					
≥1 Alteration	67	2.55 (1.04-6.27) <sup>+</sup>	2.10 (0.99-4.44)	0.82 (0.35-1.95)	NA
≥2 Alterations	20	1.51 (0.64-3.53)	1.68 (0.82-3.47)	0.45 (0.18-1.12)	1.94 (0.51-7.36)
Pre-HSCT treatment					
Low-dose chemotherapy	77	1.00	1.00	1.00	1.00
No chemotherapy	13	0.50 (0.12-2.12)	0.30 (0.07-1.25)	0.28 (0.04-2.12)	0.67 (0.08-5.35)
AML-type chemotherapy	28	0.69 (0.28-1.71)	0.88 (0.45-1.75)	1.41 (0.63-3.13)	0.70 (0.15-3.32)
Pre-HSCT BM ≥ 5%	42	1.05 (0.50-2.22)	0.84 (0.45-1.55)	0.98 (0.45-2.11)	1.04 (0.31-3.56)
Time to HSCT ≥ 6 mth	52	2.65 (1.26-5.58) <sup>+</sup>	1.46 (0.82-2.61)	1.52 (0.72-3.18)	3.78 (1.00-14.2) <sup>+</sup>
Donor					
Genotypical sibling	24	1.00	1.00	1.00	1.00
Matched unrelated	46	0.54 (0.22-1.33)	0.60 (0.27-1.32)	0.41 (0.17-1.02)	1.33 (0.14-12.9)
Mismatched relative	4	NA	0.50 (0.06-3.89)	0.55 (0.07-4.26)	NA
Mismatch unrelated	45	0.62 (0.26-1.49)	1.00 (0.48-2.09)	0.43 (0.17-1.10)	3.43 (0.42-28.0)
HLA disparities >2	40	0.77 (0.35-1.68)	1.11 (0.61-2.03)	0.64 (0.27-1.50)	3.09 (0.90-10.6)
Stem cells					
Bone marrow	70	1.00	1.00	1.00	1.00
Cord blood	39	0.81 (0.37-1.80)	1.07 (0.58-1.97)	0.54 (0.22-1.35)	2.87 (0.84-9.83)
Peripheral blood	10	0.72 (0.17-3.10)	0.48 (0.11-2.01)	0.70 (0.16-3.01)	NA
Conditioning					
Bu/Cy/Mel	41	1.00	1.00	1.00	1.00
Bu/Flu/Mel	46	1.35 (0.58-3.13)	0.87 (0.42-1.83)	0.34 (0.11-1.04)	4.26 (0.90-20.29)
Other	32	1.20 (0.47-3.05)	2.04 (1.03-4.05) <sup>+</sup>	1.77 (0.79-3.95)	0.84 (0.08-9.26)

NA refers to the models that do not converge due to too low a number of events in one stratum. <sup>+</sup>Significant results. \*For patients ≥6 months. \*\*At least 1 or 2 alterations among the following genes: *ASXL1*, *JAK3*, *SETBP1*, or double RAS mutation or karyotype anomaly. AML: acute myeloid leukemia; BM: bone marrow; Bu/Cy/Mel: busulfan / cyclophosphamide / melphalan; Bu/Flu/Mel: busulfan / fludarabine / melphalan; CB: cord blood; EFS: event-free survival; HbF: fetal hemoglobin; HSCT: hematopoietic stem cell transplantation; mth: months; N: number; OS: overall survival; PB: peripheral blood; TRM: treatment-related mortality; yr: years.



of them had a negative impact on OS (Table 3). Conditioning regimens other than Bu/Cy/Mel or Bu/Flu/Mel were associated with lower EFS. Finally, time to HSCT >6 months had a negative impact on OS related to a higher TRM.

The multivariable model confirmed the prognostic impact of monocyte count on OS, EFS and relapse. Age at diagnosis remained significant for OS and EFS. Additionally, time to HSCT and any additional alteration were found significant for OS (Table 4).

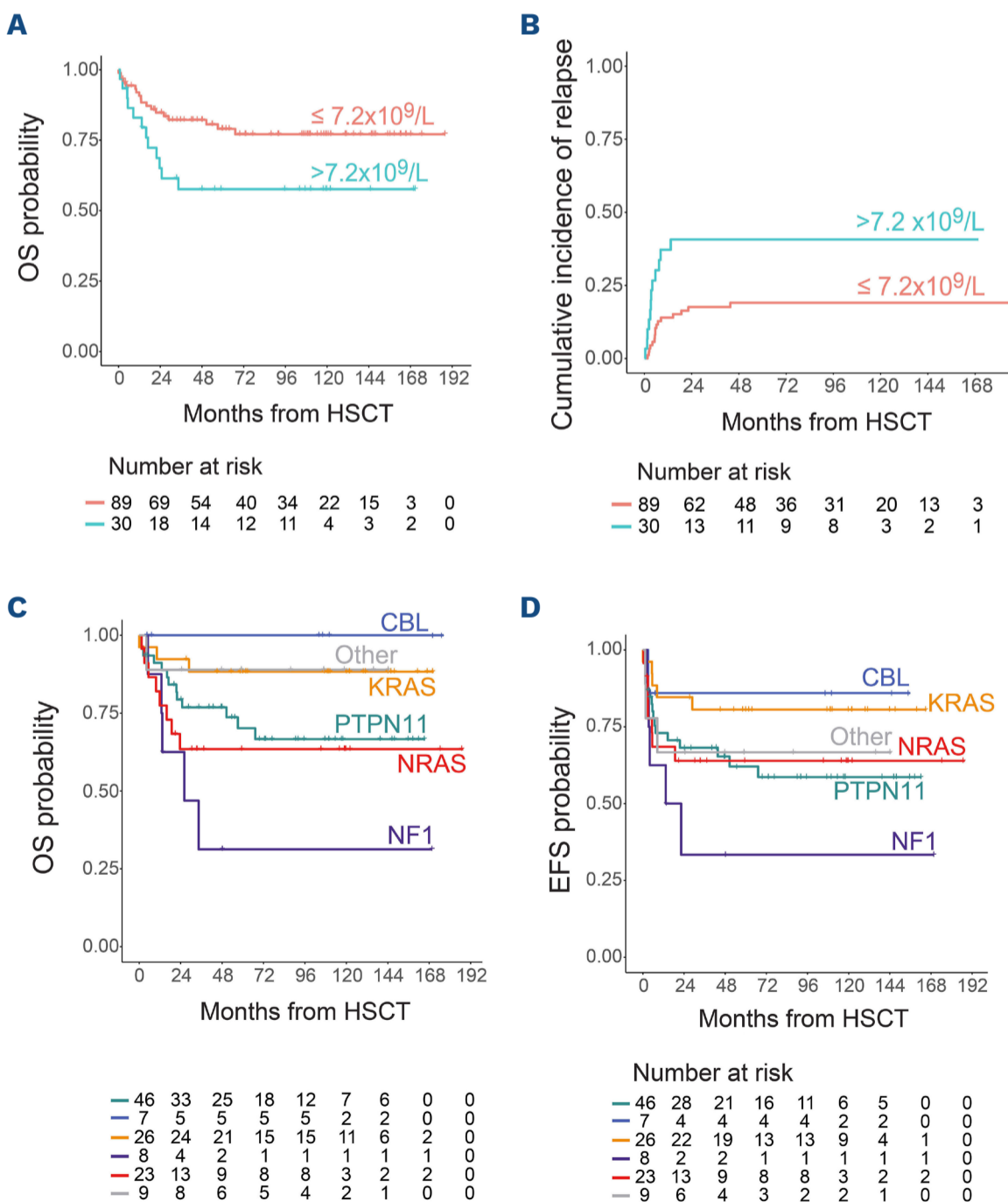
Finally, we derived a prognostic classifier based on the 4 predictors of death in the multivariate analysis (age at diagnosis, time to transplant, monocyte count and any additional alteration). This classifier defined prognostic groups of patients with 5-year OS ranging from 34.2% for patients with at least 3 predictors (N=23, 20.7%) to 100% for patients with none of the four predictors (N=8, 7%) (Figure 4).

## Discussion

We present here a comprehensive analysis of the outcome

of a large cohort of transplanted JMML patients. All patients met the JMML diagnostic criteria, recently revised in the WHO classification, including genetic characterization, which enables us to formally establish the JMML diagnosis.<sup>24,25</sup>

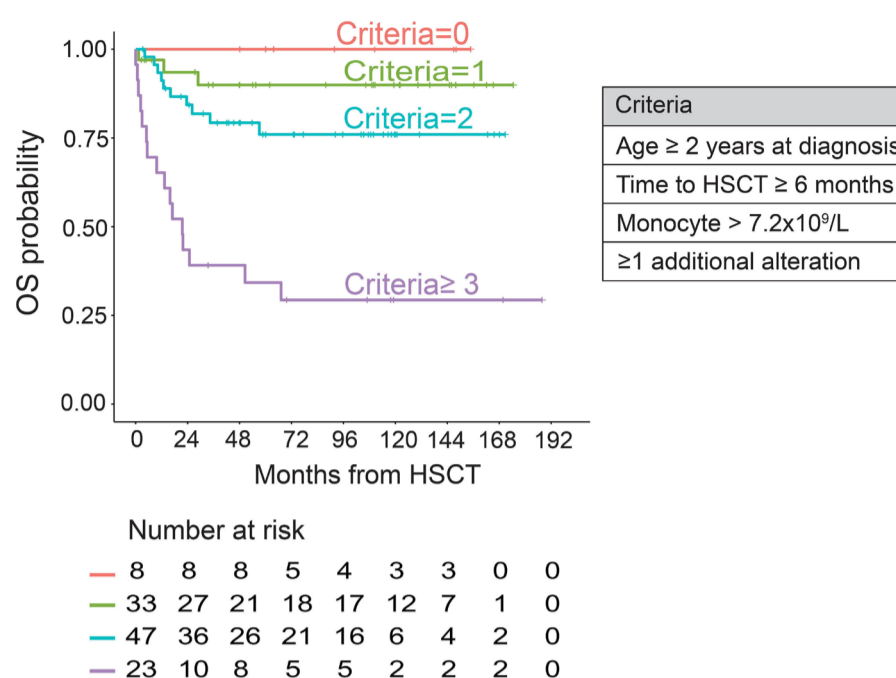
With a 5-year EFS of 66% and OS of 74%, our results compare favorably with previous published studies<sup>5,7-10,26-30</sup> (Online Supplementary Table S7). The improvement in OS among JMML patients over time has been remarkable, with survival rates increasing from 31% in the 1990s to 72% in the most recent reports.<sup>31</sup> While the results have plateaued in recent years, it is important to consider that the composition of the transplanted cohorts has changed over time, gradually leading to the exclusion of patients with the most favorable prognosis. Indeed, it has been demonstrated that patients with *CBL* mutations experience a naturally favorable evolution and may no longer require HSCT, unless they demonstrate an aggressive clinical course or a high mutational burden.<sup>32</sup> Additionally, a smaller subset of *NRAS* patients with non-high-risk features can also avoid HSCT. Despite encompassing a time span of over 20 years, the incidence of *CBL* mutations in our transplanted



**Figure 3. Effect of monocyte count and initiating RAS-mutation on outcomes.** Effect of monocyte count: (A) overall survival (OS) and (B) cumulative incidence function of relapse. Effect of initiating RAS-mutation: (C) OS and (D) event-free survival (EFS). OS and EFS were analyzed using Kaplan-Meier methodology. HSCT: hematopoietic stem cell transplant.

series (6%) is lower than the typical expectation for JMML at diagnosis. This difference probably reflects the implementation of the ‘watch-and-wait’ recommendations for these patients. As the proportion of transplanted patients with more severe conditions increased over time, it is reasonable to infer that the observed improvement in OS and EFS in our study are significant.

In our cohort, the survival improvement can be attributed to a reduction in TRM, coupled with a decrease in relapse incidence, which nevertheless still accounts for approximately one-quarter of patient deaths and remains the leading cause of mortality. Indeed, the relapse incidence in our cohort was estimated at 25%, which is lower compared to most reported series where it often surpassed 30% (*Online Supplementary Table S7*). Previous studies have demonstrated the critical role of both acute and chronic GvHD in preventing disease recurrence.<sup>8,9,28,33</sup> Consistent with these findings, we noted a significant association between chronic GvHD and improved CIR, which can be attributed to the potent graft-versus-leukemia (GvL) effect. The high incidence of GvHD in our cohort may be related to the frequent utilization of unrelated donors and could also reflect physicians’ endeavors to enhance alloreactivity in patients known to be sensitive to GvL through the accelerated tapering of immunosuppressors, although these data were not captured. The impact of GvHD on disease control following a 2<sup>nd</sup> transplant is suggested in our cohort. However, its translation into OS could be hindered by the TRM associated with extensive GvHD, as reported in a recent series.<sup>34</sup> The TRM in our cohort was evaluated at 9%, which is below the levels observed in earlier studies, where reported TRM exceeded 10% (*Online Supplementary Table S7*). This improvement may be attributed to the overall advancement in supportive care in transplantation over time, the limited use of total body irradiation in our cohort and the low frequency of HLA mismatched donors. Our analysis identified that an extended duration between diagnosis and transplant has a negative impact on TRM and OS. This variable encompasses several parameters that could contribute to an increased TRM, including iterative transfusions, compromised nutritional status, and infections. The specific factors influencing the decision of the transplant date have not been identified within our cohort. These factors could encompass organizational constraints, including graft availability, or disease-related considerations, such as the aggressive nature of JMML requiring multiple courses of chemotherapy. However, within our patient series, the median time from diagnosis to HSCT remained consistent, both for patients requiring AML-type chemotherapy and those who had no or low-dose chemotherapy. This finding suggests that transplantation was sometimes planned with a considerable long delay, even for patients with non-aggressive diseases. Given the impact of this delay on TRM, our results suggest the prompt scheduling of the transplant once the diagnosis of JMML is confirmed. The



**Figure 4. Prognostic classifier for overall survival.** This classifier defined 4 prognostic groups of patients according to the 4 predictor factors from the multivariate analysis. OS: overall survival; HSCT: hematopoietic stem cell transplant.

**Table 4.** Multivariate analyses for overall survival, event-free survival and relapse.

Outcome/model	HR (95% CI)	P
Overall survival		
Age >2 years at diagnosis	3.14 (1.31-7.51)	0.010
Time to HSCT ≥ 6 months	6.48 (2.84-14.76)	<0.001
Monocytes >7.2 x10 <sup>9</sup> /L	3.59 (1.65-7.84)	0.001
>1 additional alteration	2.88 (1.05-7.86)	0.039
Event-free survival		
Age >2 years at diagnosis	2.61 (1.35-5.05)	0.0044
Monocytes >7.2 x10 <sup>9</sup> /L	2.70 (1.40-5.18)	0.0029
Relapse		
Monocytes >7.2 x10 <sup>9</sup> /L	4.07 (1.82-9.09)	0.00061

HR: Hazard Ratio; HSCT: hematopoietic stem cell transplantation.

association between *SETBP1* and TRM is more difficult to understand and may be biased by the limited size of this group. The Japanese group adopted the Bu/Flu/Mel regimen in JMML with promising results, aiming to mitigate the toxicity associated with the triple alkylation of the Bu/Cy/Mel regimen.<sup>10,35</sup> Although there is no evidence favoring one of these two conditioning regimens over the other in the literature, it is crucial to recognize the pivotal role of their intensity. Notably, in the only randomized study focusing on JMML conditioning, attempts to reduce the regimen’s intensity were unsuccessful, as Bu/Flu resulted in a significantly higher relapse rate when compared to Bu/Cy/Mel.<sup>28</sup> In our study, both Bu/Flu/Mel and Bu/Cy/Mel conditionings led to similar EFS and OS, while other types of conditioning impaired EFS.

Five patients with autologous reconstitution survived. In *CBL* patients, as in *NRAS* patients, this outcome is expected

as many of them show a spontaneously favorable evolution without HSCT. On the contrary, patients with *KRAS* mutations typically have an aggressive disease course and require HSCT to be cured. Nevertheless, case reports have described prolonged remissions in some *KRAS* patients treated with azacitidine or without any treatment at all.<sup>36-38</sup> It has also been reported that patients with Ras-associated autoimmune leukoproliferative disorder (RALD), carrying the same somatic *KRAS* mutations as in JMML, can present an indolent condition difficult to distinguish from JMML.<sup>39</sup> In our cohort, the 3 *KRAS* patients who survived with autologous reconstitution had no clinical autoimmune manifestations or immunophenotypic abnormalities. While the conditioning regimen and the transient presence of allogeneic stem cells could have contributed to disease control, our findings are consistent with observations in RALD and indolent *KRAS* JMML cases, suggesting that *KRAS*-mutated patients might encompass a spectrum of conditions ranging from mild to highly aggressive diseases. Exploring this matter further remains essential to refine treatment strategies and accurately differentiate patients who truly require transplantation from those who could potentially avoid it.<sup>40</sup>

Age at diagnosis over one, two or four years and time between diagnosis and HSCT over six months, which have been consistently described by independent study groups to influence the outcome of transplanted JMML patients, were also identified in our cohort to alter survival in multivariate analysis (*Online Supplementary Table S7*). Conversely, other classical prognostic factors such as platelet counts  $<33 \times 10^9/L$ , elevated HbF for age, elevated BM blast percentage and abnormal karyotype were not found to influence outcome. Some of these prognostic markers have been demonstrated to be closely related to the genetic background of the disease, *PTPN11* or *NF1*-JMML tending to harbor significantly lower platelet count, higher HbF or more frequent karyotypic alteration than *CBL* or *NRAS*-JMML.<sup>41</sup> As previously discussed, when considering the comparability of studies conducted over time, the prognostic impact of some markers may have been lost in this selected aggressive group of JMML patients. Additionally, it is plausible that the relatively limited number of patients included in our study may have resulted in insufficient statistical power to detect their influence on survival. The role of pre-transplant chemotherapy in survival for patients with JMML remains controversial. In line with previous studies, we did not find any difference in EFS, or relapse incidence based on the chemotherapy regimen received before transplant.<sup>6,8</sup> This finding reaffirms that patients with a clinical condition compatible with low-intensity treatment do not require intensive chemotherapy. Due to the infrequent use of azacitidine in our cohort, we were unable to compare the outcomes of this subgroup with those of patients who received 6-mercaptopurine.

Among our 8 patients who received azacitidine, 3 relapsed after transplant and 4 died consequently to relapse or TRM

(N=1). The European Working Group (EWOG) recently published the prospective AZA-JMML-001 trial, investigating the impact of pre-transplant azacitidine in 18 patients. After 3 cycles, 61% of patients showed a partial response, and 14 achieved complete remission (CR) after HSCT during a 2-year follow-up.<sup>42</sup> The recent wider use of azacitidine will allow us to determine on a larger scale whether this approach indeed yields a positive impact on post-transplant outcomes. In JMML, secondary genetic alterations including karyotype anomalies and additional mutations of the RAS pathway or *SETBP1*, *ASXL1* and *JAK3* have been demonstrated to be associated with an unfavorable prognosis. This has been highlighted by studies conducted by our group and others in unbiased cohorts of JMML patients, including transplanted and non-transplanted ones.<sup>13,14</sup> In this study, we confirm the relevance of these secondary alterations in a selected population of transplanted patients and found that the number of genetic alterations, rather than the type of the alteration, was the main determinant factor for OS. However, secondary alterations did not impact the incidence of relapse. Unlike secondary alterations, the initiating RAS-pathway alterations were not associated with the outcome in our study, possibly due to insufficient statistical power. Indeed, *CBL* patients exhibited an excellent prognosis while *NF1* patients had the worst survival rates due to a high incidence of relapse, in line with results from previous studies.<sup>13,14</sup> In recent years, DNA methylation profiling has emerged as a novel prognostic marker in JMML, as demonstrated in 3 distinct patient cohorts.<sup>41,43,44</sup> This methylation profile has shown associations with disease biology and clinical outcomes. Methylation has not been investigated in the current cohort, but it would be intriguing to explore its relevance as a prognostic marker in a cohort of transplanted JMML patients, predominantly comprising patients with high-risk features.

In addition, our study shows that monocyte count  $>7.2 \times 10^9/L$  was an independent factor of adverse outcomes and relapse. To our knowledge, this is the first time that monocyte count has been identified as a prognostic factor for JMML, although this variable has not often been evaluated in past series. Monocytosis in PB is the hallmark of JMML and is a mandatory criterion to ascertain the diagnosis. Elevated monocyte count has been linked to disease aggressiveness and worse survival in adult myelodysplastic syndromes, myeloproliferative neoplasms, and chronic myelomonocytic leukemia (CMML).<sup>45-48</sup> In CMML, the closest adult counterpart of JMML, different subsets of monocytes, as well as their levels, may play a role in the outcome of patients, with a specific inflammatory fraction being associated with a poor prognosis.<sup>49-51</sup> The distribution of the different monocyte fractions in JMML has not yet been thoroughly explored, and, therefore, we could not correlate our findings with a comprehensive immunophenotypic and functional analysis. It would be valuable to investigate this in the future to determine if the adverse outcomes are linked to a specific subset.

Overall, this study underscores promising survival outcome

for transplanted JMML patients that can primarily be attributed to the remarkably low TRM. However, it is important to note the persistent high relapse rate, which reflects the limited availability of novel and effective anti-tumoral agents. We confirmed, on a genetically tested cohort, the significant impact of additional alterations on prognosis and found that elevated monocyte count is independently correlated with poor outcome. The prognostic classifier we developed identifies transplanted patients who are most susceptible to relapse and who could benefit from post-transplant interventions. This personalized approach holds promise for improving the outcomes and long-term survival of high-risk JMML patients after transplantation.

### Disclosures

No conflicts of interest to disclose.

### Contributions

*DM collected data and wrote the manuscript. CA and ACE performed genetic analyses and produced data. SC produced statistical analysis. EL reviewed cytological data. QN collected and reviewed clinical data. AP, FR, GM, DP, CJ, AT, VG, MOC, CP, BB, NB, CP, CC, MF and AB provided clinical assessments. HC supervised genomic analyses, co-ordinated the project, and wrote the manuscript. JHD co-ordinated the project and wrote the manuscript. MS designed and co-ordinated the project, supervised data collection, and wrote the manuscript. All authors reviewed the manuscript.*

### Data-sharing statement

*The data that support the findings of this study are available on request from the corresponding author.*

## References

- Arfeuille C, Vial Y, Cadenet M, et al. Germline bi-allelic SH2B3/LNK alteration predisposes to a neonatal juvenile myelomonocytic leukemia-like disorder. *Haematologica*. 2023 Nov 16. doi: 10.3324/haematol.2023.283917. [Epub ahead of print].
- Khoury JD, Solary E, Ablu O, et al. The 5th edition of the World Health Organization Classification of Haematolymphoid Tumours: Myeloid and Histiocytic/Dendritic Neoplasms. *Leukemia*. 2022;36(7):1703-1719.
- Niemeyer CM, Flotho C. Juvenile myelomonocytic leukemia: who's the driver at the wheel? *Blood*. 2019;133(10):1060-1070.
- Loh ML. Recent advances in the pathogenesis and treatment of juvenile myelomonocytic leukaemia. *Br J Haematol*. 2011;152(6):677-687.
- De Vos N, Hofmans M, Lammens T, De Wilde B, Van Roy N, De Moerloose B. Targeted therapy in juvenile myelomonocytic leukemia: where are we now? *Pediatr Blood Cancer*. 2022;69(11):e29930.
- Locatelli F, Nöllke P, Zecca M, et al. Hematopoietic stem cell transplantation (HSCT) in children with juvenile myelomonocytic leukemia (JMML): results of the EWOG-MDS/EBMT trial. *Blood*. 2005;105(1):410-419.
- Locatelli F, Crotta A, Ruggeri A, et al. Analysis of risk factors influencing outcomes after cord blood transplantation in children with juvenile myelomonocytic leukemia: a EUROCORD, EBMT, EWOG-MDS, CIBMTR study. *Blood*. 2013;122(12):2135-2141.
- Yoshida N, Sakaguchi H, Yabe M, et al. Clinical outcomes after allogeneic hematopoietic stem cell transplantation in children with juvenile myelomonocytic leukemia: a report from the Japan Society for Hematopoietic Cell Transplantation. *Biol Blood Marrow Transplant*. 2020;26(5):902-910.
- Yi ES, Kim SK, Ju HY, et al. Allogeneic hematopoietic cell transplantation in patients with juvenile myelomonocytic leukemia in Korea: a report of the Korean Pediatric Hematology-Oncology Group. *Bone Marrow Transplant*. 2023;58(1):20-29.
- Yabe M, Ohtsuka Y, Watanabe K, et al. Transplantation for juvenile myelomonocytic leukemia: a retrospective study of 30 children treated with a regimen of busulfan, fludarabine, and melphalan. *Int J Hematol*. 2015;101(2):184-190.
- Niemeyer CM, Arico M, Basso G, et al. Chronic myelomonocytic leukemia in childhood: a retrospective analysis of 110 cases. *European Working Group on Myelodysplastic Syndromes in Childhood (EWOG-MDS)*. *Blood*. 1997;89(10):3534-3543.
- Hasle H, Baumann I, Bergsträsser E, et al. The International Prognostic Scoring System (IPSS) for childhood myelodysplastic syndrome (MDS) and juvenile myelomonocytic leukemia (JMML). *Leukemia*. 2004;18(12):2008-2014.
- Caye A, Strullu M, Guidez F, et al. Juvenile myelomonocytic leukemia displays mutations in components of the RAS pathway and the PRC2 network. *Nat Genet*. 2015;47(11):1334-1340.
- Stieglitz E, Taylor-Weiner AN, Chang TY, et al. The genomic landscape of juvenile myelomonocytic leukemia. *Nat Genet*. 2015;47(11):1326-1333.
- Sakaguchi H, Okuno Y, Muramatsu H, et al. Exome sequencing identifies secondary mutations of SETBP1 and JAK3 in juvenile myelomonocytic leukemia. *Nat Genet*. 2013;45(8):937-941.
- Sugimoto Y, Muramatsu H, Makishima H, et al. Spectrum of molecular defects in juvenile myelomonocytic leukaemia includes ASXL1 mutations. *Br J Haematol*. 2010;150(1):83-87.
- Pérez B, Kosmider O, Cassinat B, et al. Genetic typing of CBL, ASXL1, RUNX1, TET2 and JAK2 in juvenile myelomonocytic leukaemia reveals a genetic profile distinct from chronic myelomonocytic leukaemia. *Br J Haematol*. 2010;151(5):460-468.
- Przepiorka D, Weisdorf D, Martin P, et al. 1994 Consensus Conference on Acute GVHD Grading. *Bone Marrow Transplant*. 1995;15(6):825-828.
- Jagasia MH, Greinix HT, Arora M, et al. National Institutes of Health Consensus Development Project on Criteria for Clinical Trials in Chronic Graft-versus-Host Disease: I. The 2014 Diagnosis and Staging Working Group report. *Biol Blood Marrow Transplant*. 2015;21(3):389-401.
- Prentice RL. *The statistical analysis of failure time data*. 2nd ed. Hoboken, NJ: J. Wiley; 2010.
- Prentice RL, Kalbfleisch JD, Peterson AV, Flournoy N, Farewell VT, Breslow NE. The analysis of failure times in the presence of competing risks. *Biometrics*. 1978;34(4):541-554.
- White IR, Royston P. Imputing missing covariate values for the Cox model. *Stat Med*. 2009;28(15):1982-1998.
- Grambsch PM, Therneau TM. Proportional hazards tests and diagnostics based on weighted residuals. *Biometrika*. 1994;81(3):515-526.

24. Niemeyer CM. JMML genomics and decisions. *Hematology Am Soc Hematol Educ Program*. 2018;2018(1):307-312.
25. Yoshimi A, Kamachi Y, Imai K, et al. Wiskott-Aldrich syndrome presenting with a clinical picture mimicking juvenile myelomonocytic leukaemia. *Pediatr Blood Cancer*. 2013;60(5):836-841.
26. Manabe A, Okamura J, Yumura-Yagi K, et al. Allogeneic hematopoietic stem cell transplantation for 27 children with juvenile myelomonocytic leukemia diagnosed based on the criteria of the International JMML Working Group. *Leukemia*. 2002;16(4):645-649.
27. Stieglitz E, Ward AF, Gerbing RB, et al. Phase II/III trial of a pre-transplant farnesyl transferase inhibitor in juvenile myelomonocytic leukemia: a report from the Children's Oncology Group. *Pediatr Blood Cancer*. 2015;62(4):629-636.
28. Dvorak CC, Satwani P, Stieglitz E, et al. Disease burden and conditioning regimens in ASCT1221, a randomized phase II trial in children with juvenile myelomonocytic leukemia: a Children's Oncology Group study. *Pediatr Blood Cancer*. 2018;65(7):e27034.
29. Lin Y-C, Luo C-J, Miao Y, et al. Human leukocyte antigen disparities reduce relapse after hematopoietic stem cell transplantation in children with juvenile myelomonocytic leukemia: a single-center retrospective study from China. *Pediatr Transplant*. 2021;25(2):e13825.
30. Smith FO, King R, Nelson G, et al. Unrelated donor bone marrow transplantation for children with juvenile myelomonocytic leukaemia. *Br J Haematol*. 2002;116(3):716-724.
31. Locatelli F, Niemeyer C, Angelucci E, et al. Allogeneic bone marrow transplantation for chronic myelomonocytic leukemia in childhood: a report from the European Working Group on Myelodysplastic Syndrome in Childhood. *J Clin Oncol*. 1997;15(2):566-573.
32. Niemeyer CM, Kang MW, Shin DH, et al. Germline CBL mutations cause developmental abnormalities and predispose to juvenile myelomonocytic leukemia. *Nat Genet*. 2010;42(9):794-800.
33. Hecht A, Meyer J, Chehab FF, et al. Molecular assessment of pretransplant chemotherapy in the treatment of juvenile myelomonocytic leukemia. *Pediatr Blood Cancer*. 2019;66(11):e27948.
34. Vinci L, Flotho C, Noellke P, et al. Second allogeneic stem cell transplantation can rescue a significant proportion of patients with JMML relapsing after first allograft. *Bone Marrow Transplant*. 2023;58(5):607-609.
35. Yabe M, Sako M, Yabe H, et al. A conditioning regimen of busulfan, fludarabine, and melphalan for allogeneic stem cell transplantation in children with juvenile myelomonocytic leukemia. *Pediatr Transplant*. 2008;12(8):862-867.
36. Hashmi SK, Punia JN, Marcogliese AN, et al. Sustained remission with azacitidine monotherapy and an aberrant precursor B-lymphoblast population in juvenile myelomonocytic leukemia. *Pediatr Blood Cancer*. 2019;66(10):e27905.
37. Furlan I, Batz C, Flotho C, et al. Intriguing response to azacitidine in a patient with juvenile myelomonocytic leukemia and monosomy 7. *Blood*. 2009;113(12):2867-2868.
38. Matsuda K, Shimada A, Yoshida N, et al. Spontaneous improvement of hematologic abnormalities in patients having juvenile myelomonocytic leukemia with specific RAS mutations. *Blood*. 2007;109(12):5477-5480.
39. Calvo KR, Price S, Braylan RC, et al. JMML and RALD (Ras-associated autoimmune leukoproliferative disorder): common genetic etiology yet clinically distinct entities. *Blood*. 2015;125(18):2753-2758.
40. Mayerhofer C, Niemeyer CM, Flotho C. Current treatment of juvenile myelomonocytic leukemia. *J Clin Med*. 2021;10(14):3084.
41. Murakami N, Okuno Y, Yoshida K, et al. Integrated molecular profiling of juvenile myelomonocytic leukemia. *Blood*. 2018;131(14):1576-1586.
42. Niemeyer CM, Flotho C, Lipka DB, et al. Response to upfront azacitidine in juvenile myelomonocytic leukemia in the AZA-JMML-001 trial. *Blood Adv*. 2021;5(14):2901-2908.
43. Stieglitz E, Mazor T, Olshen AB, et al. Genome-wide DNA methylation is predictive of outcome in juvenile myelomonocytic leukemia. *Nat Commun*. 2017;8(1):2127.
44. Lipka DB, Witte T, Toth R, et al. RAS-pathway mutation patterns define epigenetic subclasses in juvenile myelomonocytic leukemia. *Nat Commun*. 2017;8(1):2126.
45. Tefferi A, Shah S, Mudireddy M, et al. Monocytosis is a powerful and independent predictor of inferior survival in primary myelofibrosis. *Br J Haematol*. 2018;183(5):835-838.
46. Patnaik MM, Tefferi A. Chronic myelomonocytic leukemia: 2022 update on diagnosis, risk stratification, and management. *Am J Hematol*. 2022;97(3):352-372.
47. Patnaik MM, Padron E, LaBorde RR, et al. Mayo prognostic model for WHO-defined chronic myelomonocytic leukemia: ASXL1 and spliceosome component mutations and outcomes. *Leukemia*. 2013;27(7):1504-1510.
48. Barraco D, Cerquozzi S, Gangat N, et al. Monocytosis in polycythemia vera: clinical and molecular correlates. *Am J Hematol*. 2017;92(7):640-645.
49. Jestin M, Tarfi S, Duchmann M, et al. Prognostic value of monocyte subset distribution in chronic myelomonocytic leukemia: results of a multicenter study. *Leukemia*. 2021;35(3):893-896.
50. Selimoglu-Buet D, Wagner-Ballon O, Saada V, et al. Characteristic repartition of monocyte subsets as a diagnostic signature of chronic myelomonocytic leukemia. *Blood*. 2015;125(23):3618-3626.
51. Selimoglu-Buet D, Rivière J, Ghamlouch H, et al. A miR-150/TET3 pathway regulates the generation of mouse and human non-classical monocyte subset. *Nat Commun*. 2018;9(1):5455.