



**HAL**  
open science

## Type 3 long QT syndrome: Is the effectiveness of treatment with beta-blockers population-specific?

Alexis Hermida, Jean-Baptiste Gourraud, Isabelle Denjoy, Véronique Fressart, Florence Kyndt, Alice Maltret, Diala Khraiche, Didier Klug, Philippe Mabo, Frédéric Sacher, et al.

### ► To cite this version:

Alexis Hermida, Jean-Baptiste Gourraud, Isabelle Denjoy, Véronique Fressart, Florence Kyndt, et al.. Type 3 long QT syndrome: Is the effectiveness of treatment with beta-blockers population-specific?. Heart Rhythm, 2024, 21 (3), pp.313-320. 10.1016/j.hrthm.2023.11.007 . hal-04467373

**HAL Id: hal-04467373**

**<https://univ-rennes.hal.science/hal-04467373v1>**

Submitted on 8 Apr 2024

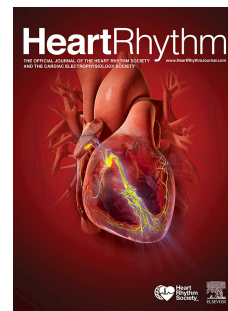
**HAL** is a multi-disciplinary open access archive for the deposit and dissemination of scientific research documents, whether they are published or not. The documents may come from teaching and research institutions in France or abroad, or from public or private research centers.

L'archive ouverte pluridisciplinaire **HAL**, est destinée au dépôt et à la diffusion de documents scientifiques de niveau recherche, publiés ou non, émanant des établissements d'enseignement et de recherche français ou étrangers, des laboratoires publics ou privés.



Distributed under a Creative Commons Attribution - NonCommercial 4.0 International License

# Journal Pre-proof



Type 3 long QT syndrome: is the effectiveness of treatment with beta-blockers population-specific?

Alexis Hermida, MD, Jean-Baptiste Gourraud, MD, Isabelle Denjoy, MD, Véronique Fressart, MD, Florence Kyndt, PharmD, PhD, Alice Maltret, MD, Diala Khraiche, MD, Didier Klug, MD, PhD, Philippe Mabo, MD, Frédéric Sacher, MD, PhD, Philippe Maury, MD, PhD, Pierre Winum, MD, Pascal Defaye, MD, Gael Clerici, MD, Dominique Babuty, MD, Yedid Elbez, MSc, Charles Morgat, MD, Elodie Surget, MD, Anne Messali, MD, Patrick De Jode, MD, Aurélien Clédél, MD, Damien Minois, MD, Pierre Maison-Blanche, MD, Adrien Bloch, MD, Antoine Leenhardt, MD, Vincent Probst, MD, PhD, Fabrice Extramiana, MD, PhD

PII: S1547-5271(23)02910-7

DOI: <https://doi.org/10.1016/j.hrthm.2023.11.007>

Reference: HRTHM 10066

To appear in: *Heart Rhythm*

Received Date: 1 September 2023

Revised Date: 1 November 2023

Accepted Date: 6 November 2023

Please cite this article as: Hermida A, Gourraud J-B, Denjoy I, Fressart V, Kyndt F, Maltret A, Khraiche D, Klug D, Mabo P, Sacher F, Maury P, Winum P, Defaye P, Clerici G, Babuty D, Elbez Y, Morgat C, Surget E, Messali A, De Jode P, Clédél A, Minois D, Maison-Blanche P, Bloch A, Leenhardt A, Probst V, Extramiana F, Type 3 long QT syndrome: is the effectiveness of treatment with beta-blockers population-specific?, *Heart Rhythm* (2023), doi: <https://doi.org/10.1016/j.hrthm.2023.11.007>.

This is a PDF file of an article that has undergone enhancements after acceptance, such as the addition of a cover page and metadata, and formatting for readability, but it is not yet the definitive version of record. This version will undergo additional copyediting, typesetting and review before it is published in its final form, but we are providing this version to give early visibility of the article. Please note that, during the production process, errors may be discovered which could affect the content, and all legal disclaimers that apply to the journal pertain.



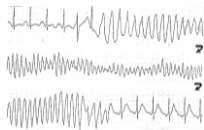
**141** patients with LQT3

$\beta$ -blockers initiation  
N=61 patients (43.3%)



**20.5%** [14.2-29.0]  
probability of  
**CE** (syncope/SCD/ACA/  
appropriate ICD shock)  
at the age of 40

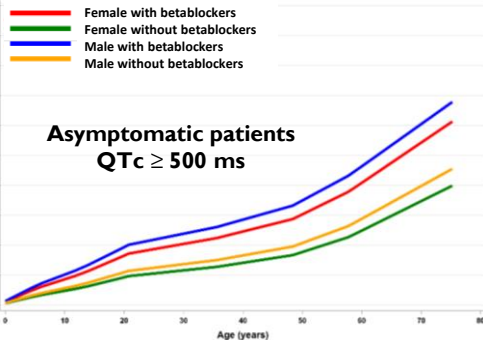
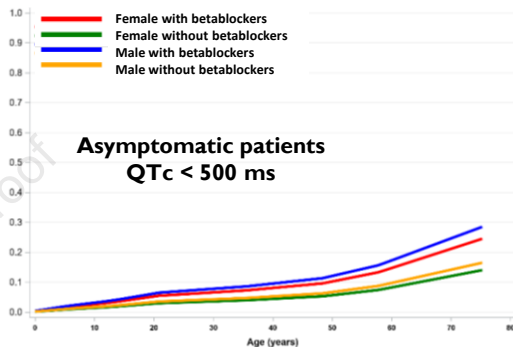
**9.9%** [5.5-17.5]  
probability of  
**SCE** (SCD/ACA/  
appropriate ICD  
shock) at the age of 40



**CEs predictors**  
(HR [95%CI]):  
-Proband status: 4.07  
[1.9-8.9];  $p < 0.001$   
-QTc prolongation: 1.12  
[1.0-1.2];  $p = 0.005$

**SCEs predictors**  
(HR [95%CI]):  
-Proband status: 8.13  
[1.7-38.8];  $p = 0.009$

Cox model predicted age at first SCE



Median [IQR] follow-up: 11 [6.0-16.0] years



## 1 **Structured Abstract**

2 **Background:** Efficacy of beta blocker treatment in type 3 long QT syndrome (LQT3) remains  
3 debated.

4 **Objectives:** To test the hypothesis that beta-blocker use is associated with cardiac events in a  
5 French cohort of LQT3 patients.

6 **Methods:** All the patients with a likely pathogenic/pathogenic variant in the *SCN5A* gene  
7 (linked to LQT3) were included and followed up. Documented ventricular  
8 tachycardia/ventricular fibrillation, torsade de pointes, aborted cardiac arrest, sudden death,  
9 and appropriate shocks were considered as severe cardiac events (SCEs). Cardiac events  
10 (CEs) also included syncope.

11 **Results:** We included 147 patients from 54 families carrying 23 variants. Six of the patients  
12 developed symptoms before the age of 1 year and were analyzed separately. The 141  
13 remaining patients (52.5% male, median age at diagnosis 24.0 years) were followed-up for a  
14 median of 11 years. The probabilities of a CE and an SCE from birth to the age of 40 were  
15 respectively 20.5% and 9.9%. QTc prolongation (HR = 1.12 [1.0-1.2]; p=0.005) and proband  
16 status (HR = 4.07 [1.9-8.9]; p<0.001) were independently associated with the occurrence of  
17 CEs. Proband status (HR = 8.13 [1.7-38.8]; p=0.009) was found to be independently  
18 associated with SCEs, while QTc prolongation (HR = 1.11 [1.0-1.3]; p=0.108) did not reach  
19 statistical significance. The cumulative probability of the age at first CE/SCE was not lower in  
20 patients treated with a beta-blocker.

21 **Conclusion:** In agreement with the literature, proband status and lengthened QTc were  
22 associated with a higher risk of CEs. Our data do not show a protective effect of beta-blocker  
23 treatment.

24

1 **Keywords:** type 3 long QT syndrome – SCN5A – beta-blocker treatment – prognosis –

2 personalized medicine

3

4 **Abbreviation list**

5 ACA: aborted cardiac arrest

6 CE: cardiac event

7 ICD: implantable cardioverter defibrillator

8 LQTS: long QT syndrome

9 LQT3: type 3 LQTS

10 SCD: sudden cardiac death

11 SCE: severe cardiac event

12 TdP: torsade de pointes

13 VT/VF: ventricular tachycardia / ventricular fibrillation

14

## 1 **1. Introduction**

2 Congenital long QT syndrome (LQTS), the most frequent inherited arrhythmic syndrome, is a  
3 significant cause of SCD in young patients with structurally normal heart.

4 Type 3 LQTS (LQT3) is found in 5 to 10% of genotype-positive patients. Despite its  
5 rarity, LQT3 differs from types 1 and 2 LQTS (LQT1 and LQT2) with regard to the disease  
6 mechanisms<sup>1</sup>, the circumstances of symptom onset<sup>2-4</sup>, prognosis<sup>5</sup>, and responsiveness to  
7 treatment.

8 Although experimental data<sup>6,7</sup>, as well as results from previous clinical studies<sup>8,4,9</sup>,  
9 suggested that beta-blocker treatment could be less effective or even harmful in LQT3, more  
10 recent studies have challenged this finding. A meta-analysis published in 2017<sup>10</sup>, could not  
11 provide a conclusive statement on the role of beta-blockers in LQT3. However, Wilde et al.<sup>11</sup>  
12 study of the largest yet international cohort of LQT3 patients (n=391) found a strong  
13 protective effect of beta-blockers in women. In contrast, the latest work on the subject was  
14 unable to show a beneficial effect of beta blockers.<sup>12</sup>

15 In order to confirm the effectiveness of beta-blocker treatment in an independent  
16 cohort of LQT3 patients, we sought to identify predictors of cardiac events (CEs) and severe  
17 cardiac events (SCEs) in a large French multicenter cohort of LQT3 patients.

18

## 1 **2. Methods**

### 2 2.1. Study population

3 Probands were initially diagnosed with LQTS based on ECG and clinical data in three French  
4 reference centers for inherited arrhythmias. LQT3 was subsequently diagnosed in presence of  
5 a likely pathogenic/pathogenic variant in *SCN5A*. Cascade screening was offered to family  
6 members.

7 All probands and family members carrying *SCN5A* LQT3 likely  
8 pathogenic/pathogenic variants were included in the study. Patients with Cardiac Event  
9 (aborted cardiac arrest (ACA), SCD or syncope) before 1 year of age were excluded from the  
10 study population.

11 All patients or the authorized family members gave their written, informed consent for  
12 the genetic testing and the use of their personal medical data for research purposes. The study  
13 protocol complied with the ethical guidelines of the Declaration of Helsinki as revised in 2013  
14 and its subsequent amendments. In line with the French legislation on studies of routine  
15 clinical practice, the study protocol was approved by a hospital committee with competency  
16 for studies not requiring approval by an institutional review board. Furthermore, the study  
17 database was anonymized and registered with the French National Data Protection  
18 Commission (*Commission nationale de l'informatique et des libertés* (Paris, France);  
19 reference: PI2022\_843\_0059).

20 Mutations were analyzed according to standard protocols for genetic testing. Details  
21 are provided in supplementary data.

22

23



## 1 2.2. Data on the natural history of the disease

2 The time of diagnosis was defined as the date on which LQTS was diagnosed from clinical  
3 and ECG data or on which a LQT3-associated gene mutation was found, whichever first.

4 Personal and family medical histories prior to diagnosis were collected retrospectively.

5 Cardiac events were defined as syncope (after excluding orthostatic, reflex and vaso-  
6 vagal mechanisms), documented polymorphic VT, VF or torsade de pointes (TdP), ACA,  
7 SCD, and appropriate shocks. Serious cardiac events were defined as polymorphic VT/VF,  
8 TdP, ACA, SCD, and appropriate shocks.

9 ECG measurements and LQTS score are described in supplemental data.

10

## 11 2.3. Follow-up data and outcomes

12 Patients were followed up prospectively from the LQTS diagnosis to the last follow-up visit  
13 or death. Treatment decisions were left to the attending physician. We recorded the drug  
14 name, the treatment periods, and the time of event occurrence.

15 The study's primary and secondary outcomes were the time from birth to the  
16 occurrence of the first CE and the first SCE (as defined above), respectively.

17

## 18 2.4. Statistical analysis

19 Continuous variables were expressed as the mean  $\pm$  standard deviation or the median  
20 [interquartile range (IQR)] for normally and non-normally distributed data, respectively, and  
21 group values were compared using Student's *t*-test or the Mann-Whitney-Wilcoxon test, as  
22 appropriate. Categorical variables were expressed as the number (percentage), and group  
23 values were compared using a chi-squared test.

24 The time to the first CE or first SCE was represented graphically as a Kaplan-Meier  
25 curve, and groups were compared in a log-rank test. For patients with no CEs during the

1 follow-up period, the data were censored either at death, loss to follow-up, the end of the  
2 follow-up period, or the initiation of treatment with an antiarrhythmic drug other than a  
3 betablocker.

4 Furthermore, the time-to-event outcomes were modeled using Cox proportional-  
5 hazards regressions. Single-variable analyses (for individual variable effects) and  
6 multivariable analyses were conducted sequentially. The models included the following  
7 covariates: beta-blocker status, p.(Glu1784Lys) variant, QTc level (per 10 ms increment), sex,  
8 and proband status.

9 Since the betablocker status can change over time the treatment variable was  
10 introduced as a time-varying covariate in the Cox models. We also introduced syncope into  
11 the model as a time-varying covariate predictor of the CE or SCE.

12 Relative risks for each covariate were expressed as the hazard ratio (HR) [95%  
13 confidence interval (CI)]. All tests were two-sided. The threshold for statistical significance  
14 was set to  $p < 0.05$ .

15

16

### 1 3. Results

#### 2 3.1. The study population

3 181 patients from 72 families carrying 40 different *SCN5A* variants were identified in the  
4 databases. After review, 17 variants were considered variants of uncertain significance (33  
5 carriers and 17 families). Hence, 148 patients from 55 families carrying 23 different *SCN5A*  
6 variants were eligible. One proband also carried a pathogenic *KCNQ1* variant and was  
7 excluded.

8 Our final study population therefore included 147 patients from 54 families carrying  
9 23 variants (22 missense variants and 1 deletion) (Supplemental Table S1).

10 Six (4.1%) patients showed LQTS-related events before 1 year of age (Supplemental  
11 Table S2 and S3). These 6 patients were excluded from further analyses.

12

#### 13 3.2. Clinical characteristics at diagnosis

14 Table 1 displays the clinical characteristics of the 141 patients (52.5% males, median age 24.0  
15 years [12.0-43.0]).

16 Half of patients carried the p.(Gly1784Lys) variant. Comparison with patients carrying  
17 other mutations are shown in Supplemental Table S4.

18 At diagnosis, 26 patients (17.7%) had a history of CEs (including SCEs in 6 cases).  
19 These patients were more likely to be probands and had a longer QTc interval and a higher  
20 LQTS risk score (Supplemental Table S5).

21

#### 22 3.3. Follow-up data

23 Two patients (both asymptomatic at diagnosis) were lost to follow-up. The remaining 139  
24 patients were followed up for a mean of  $11.2 \pm 6.9$  years (median: 11; IQR: 6.0-16.0).

1 Beta-blocker treatment was initiated in 61 (43.3%) patients. Characteristics of patients  
2 according to initiation of beta-blocker treatment are shown Table 2. Nadolol was the most  
3 frequently prescribed (50.8%), followed by bisoprolol (29.5%), acebutolol (6.6%),  
4 propranolol (4.9%), atenolol, celiprolol (3.3% each), and betaxolol (1.6%).

5 Three patients were treated with flecainide immediately after diagnosis, and 3 others  
6 after experiencing a SCE during follow-up. In the latter 3 cases, an SCE recurred during the  
7 flecainide treatment period.

8 Twenty-four patients (17.0%) received an ICD.

9 None had left cardiac sympathetic denervation.

10 Twenty patients (14.2%) experienced at least one CE during follow-up, and 12 (8.5%)  
11 experienced at least one SCE (1 SCD, 3 ACA, and 8 appropriate shocks) (Supplemental Table  
12 S6). Treatment at the time of Severe cardiac events occurring before and after diagnosis are  
13 described in Table 3. None of the SCE observed in p.(Glu1784Lys) carriers occurred while on  
14 beta blocker. None of the appropriate ICD shocks occurred while on beta blocker (Table 3).

15 Patients who died from LQTS are described in Supplemental Table S7.

16

### 17 3.4. Predictors of CEs

18 The cumulative [95%CI] probabilities of a first CE and SCE at the age of 40 were  
19 respectively 20.5% [14.2-29.0] and 9.9% [5.5-17.5] (Figure 1). The risk of a CE and an SCE  
20 was associated with the degree of QTc prolongation (Supplemental Figure 1).

21 QTc prolongation (HR = 1.12 [1.0-1.2]; p=0.005) and proband status (HR = 4.07  
22 [1.9-8.9]; p<0.001) were independently associated with the occurrence of CEs (Table 4).

23 When syncope was included in a time-dependent model, proband status (HR = 8.13 [1.7-  
24 38.8], p=0.009) was the only independent factor associated with SCEs (Table 5). When

25 syncope was excluded, QTc prolongation (HR = 1.14 [1.0-1.3]; p=0.027), proband status (HR

1 = 8.59 [1.8-40.2]; p=0.006), and time-dependent beta-blocker treatment (HR = 3.43 [1.1-  
2 10.8]; p=0.036) were independently associated with SCEs (Supplemental Figure 2).

3           Figures 2 and 3 show the Cox-predicted age at first SCE by beta-blocker treatment  
4 status and sex. In asymptomatic patients (i.e. no prior syncope) beta-blocker treatment was  
5 not associated with lower probability of SCE in both sexes; in both patients with QTc above  
6 or below 500 ms (Figure 2). Likewise, in patients with prior syncope, beta-blocker treatment  
7 was not associated with a lower probability of an SCE in both sexes, regardless of whether the  
8 QTc was below or above 500 ms (Figure 3). Exclusion of patients carrying the  
9 p.(Glu1784Lys) mutation did not change the pattern (Supplemental Figure 3 and 4).

10

## 1 **4. Discussion**

2 We analyzed the predictors of LQTS-related events in a large, independent cohort of  
3 genotyped patients with LQT3 in France. We found the usual risk factors for events (such as  
4 proband status and QTc prolongation) in LQT3 patients but we did not observe the protective  
5 effect of beta-blocker treatment described in recent studies.

6

### 7 4.1. Representativeness of the cohort

8 The distribution of QTc durations observed in our study was in line with recent  
9 reports<sup>11,13</sup>, although the values were mostly shorter than in some older studies<sup>2,4,8,9</sup>. As  
10 previously described<sup>14</sup>, including genotype-positive but phenotype-negative patients affects  
11 the clinical characteristics and the prognosis of LQTS patients with LQTS (see Supplemental  
12 Table 8 for review).

13 We found that QTc prolongation was a strong predictor of CEs and SCEs, as  
14 consistently reported in the literature.<sup>2,5,11,14</sup> In our study (as in others), the *SCN5A*  
15 p.(Glu1784Lys) variant was the most frequent. The latter is reportedly associated with high  
16 event rates<sup>15</sup> and/or a benign clinical course<sup>11</sup>. In our study, the event rate was lower in  
17 p.(Glu1784Lys) carriers but this difference vs. other variants was not statistically significant.

18

### 19 4.2. The effectiveness of beta-blockers

20 In contrast to LQT1 (and in a lesser degree in LQT2), most events occur at night or  
21 when resting in patients with LQT3.<sup>4</sup> Although the autonomic state changes during different  
22 sleep phases, this suggests that adrenergic stimulation is not a major trigger in LQT3, and  
23 intuitively, that beta-blocker treatment would not protect against these events occurring at rest  
24 or during sleep.

1           Accordingly, the earliest cohort studies found that beta-blocker treatment was less  
2 effective in LQT3 than in LQT1 or LQT2.<sup>4,8,9</sup> However, more recent data have challenged  
3 these studies. A meta-analysis<sup>10</sup> published in 2017 was not able to make a conclusive  
4 statement. While, the study published in 2016 by Wilde et al.<sup>11</sup> showed a strong protective  
5 effect of beta-blocker treatment in females, but not in males.

6           Mazzanti et al.<sup>14</sup> showed that nadolol was associated with a significant risk reduction  
7 in LQTS patients without significant statistical interaction with genotype. However, the lack  
8 of a statistically significant result does not rule out the presence of an interaction; the authors  
9 did not report event rates on and off beta-blockers by genotype, and so firm conclusions about  
10 the effectiveness of beta-blockers in LQT3 cannot be drawn from their study.

11           Noteworthy, the same group had previously reported<sup>16</sup> that beta-blockers failed to  
12 significantly reduce the mean number of patients with ACA/SCD (from 6 to 4,  $p=0.688$ ), the  
13 mean number of ACAs/SCDs per patient (from 0.13 to 0.10,  $p= 0.763$ ).

14           The European Society of Cardiology's latest guidelines on the management of patients  
15 with ventricular arrhythmia<sup>17</sup> highlighted "the uncertain role of beta-blockers in LQT3".

16           A recent work by Younis et al.<sup>12</sup> showed that the positive effect of beta-blockers was  
17 highest in patients with exercise or stress related events. However, despite including 501  
18 LQT3 patients, the study could not demonstrate a positive effect of beta-blockers in LQT3  
19 patients.

20           In the present study, a multivariate analysis and Cox prediction models did not show a  
21 protective effect of beta-blocker treatment.

22           There are several possible explanations for the differences in the effectiveness of beta-  
23 blocker treatment between Wilde et al.'s study and our study.

24           Firstly, the two study populations were genetically dissimilar, with a higher prevalence  
25 of the p.(Gly1784Lys) mutations in our study. In a recent study, 75% of the patients carrying

1 the *SCN5A* Glu1784Lys mutation had a Brugada ECG pattern after an ajmaline challenge<sup>18</sup>.  
2 The additional presence of Brugada syndrome would contra-indicate the use of sodium  
3 channel blockers and would raise questions about the safety of beta-blocker treatment.  
4 Noteworthy, all the 6 SCEs recorded in our p.(Glu1784Lys) carrier patients occurred while  
5 off beta blockers. Hence, these events are not related to a proarrhythmic effect of treatment in  
6 LQT3-Brugada patients, and the absence of efficacy of beta-blocker treatment in our study  
7 cannot be explained by a specific treatment effect in p.(Glu1784Lys) carriers. Moreover, the  
8 multivariate analysis was adjusted on the p.(Glu1784Lys) presence to take into account its  
9 possible specific response to beta-blocker treatment. The prediction model performed on the  
10 population without the p.(Glu1784Lys) was consistent with the trend shown by the same  
11 model for the whole population. These various arguments suggest that our results are not  
12 driven by the significant proportion of the p(Glu1784Lys) carriers. Mutation types are not  
13 necessarily similar in different cohorts and may affect treatment effect. For instance, it has  
14 been shown that some LQT3 mutations do not respond to mexiletine.<sup>19,20</sup>

15 Secondly, appropriate shocks, which are not good surrogates of ACA/SCD, were  
16 included in our definition of SCEs but were not taken into account by Wilde et al.. However,  
17 none of the appropriate ICD shocks observed in our study occurred while on beta-blocker.  
18 Hence, including appropriate shocks in the SCE category should have driven the results  
19 toward a detrimental effect of not prescribing beta-blockers.

20 Thirdly, we note that only around half (56%) of our beta-blocker-treated patients were  
21 on propranolol or nadolol. More frequent prescription of beta-blockers with a late sodium  
22 current blocking effect might have tilted the results toward a beneficial effect of treatment.  
23 The proportion of patients on different beta-blockers type are not clearly described in all  
24 previous studies.<sup>11</sup>



1 Last, the absence of protective effect found in our study could be related to the  
2 selection bias induced by treatment decision. Indeed, patients in whom beta-blocker treatment  
3 was prescribed had a higher risk profile (Table 2). We did our best to try to account for such a  
4 bias by using multivariate analyzes and complex modelling with the treatment variable  
5 introduced as a time-varying covariate in the Cox models.

#### 6 7 4.3. Other treatment options for patients with LQT3

8 Our results raise questions about the effectiveness of beta-blocker treatment in LQT3 patients.  
9 However, this does not mean that we recommend broadening the indication for ICD  
10 implantation for primary prevention, because ICDs are associated with high complication  
11 rates - especially in younger patients.

12 Other therapeutic options exist, and recent studies have underlined the potential  
13 efficacy of various drug-based approaches. Small series have described good levels of  
14 effectiveness for flecainide in LQT3 patients.<sup>21-23</sup> In our study, flecainide did not prevent  
15 recurrences in the 3 patients treated with flecainide after a severe event.

16 The late sodium current channel blockers are promising avenues. In a study of a cohort  
17 of 34 LQTS patients, mexiletine shortened QTc and was associated with a major reduction in  
18 the frequency of life-threatening arrhythmic events.<sup>24</sup> In two small clinical series of LQT3  
19 patients, treatment with ranolazine resulted in a shorter QT interval – despite the associated  
20 IKr blockade effect.<sup>25,26</sup> Mexiletine is now recommended for patients with LQT3 and  
21 prolonged QTc.<sup>17</sup>

22 Left cardiac sympathetic denervation is recommended in the last guidelines, regardless  
23 of the LQTS<sup>17</sup> but specific data in LQT3 are scarce.

## 1 4.4. Limitations

2 Although our cohort was relatively large for a single country, it accounted for only a small  
3 proportion of the patients with LQT3 in France; hence, selection bias cannot be ruled out.

4 Furthermore, given the small number of events, a lack of statistical power cannot be ruled out.

5 Our work also presents the limitations of a non-randomized study, with possible selection bias  
6 – particularly regarding the prescription of beta-blocker treatment. This selection bias,

7 inherent to non-randomized studies, was most likely also present in previous published studies  
8 on the topic.<sup>11</sup> Finally, low beta-blocker treatment observance has been related to increase risk

9 of event occurrence.<sup>27</sup> Since we could not ascertain, beyond history taking, the patients

10 treatment observance at the time of event occurrence, we cannot exclude that some events

11 classified as occurring on beta blocker treatment actually took place off treatment. It should

12 be noted that our population has a high prevalence of the p.(Glu1784Lys) variant, potentially

13 responsible of overlap syndrome, and consequently with a potentially worse response to beta-

14 blocker treatment. We took this parameter into account by adjusting the multivariate analyses

15 on the presence of this particular variant.

16

17

## 1 **5. Conclusion**

2 In accordance with previous studies of LQT3 patients, proband status and QTc duration were  
3 independently associated with the occurrence of cardiac events in our LQT3 cohort. Our data  
4 do not find a protective effect of beta-blocker treatment in LQT3 patients. This result suggests  
5 that the response to beta-blocker treatment may depend on clinical and/or genetic  
6 characteristics of patients.

7 The best therapeutic approach for LQT3 patients needs to be refined, in order to better  
8 define the indications for beta-blockers or late sodium current inhibitors and to avoid overly  
9 frequent implantation of ICDs. Further analyses of historical cohorts would probably be  
10 subject to the same methodological limitations as our present work. Given the rarity of LQT3,  
11 we consider that collaborative, randomized controlled studies are now warranted.

12

## 13 **6. Sources of funding**

14 No funding sources.

15

## 16 **7. Acknowledgments**

17 We thank Annabelle Rajalu and Jean-Francois Pruny for help with data acquisition.

18 We thank Dr David Fraser (Biotech Communication SARL, Ploudalmézeau, France) for copy  
19 editing and editorial assistance.

20

**8. References**

- 1 1. Abrams DJ, MacRae CA: Long QT Syndrome. *Circulation American Heart Association*,  
2 2014; 129:1524–1529.
- 3  
4 2. Zareba W, Moss AJ, Schwartz PJ, et al.: Influence of the genotype on the clinical course  
5 of the long-QT syndrome. International Long-QT Syndrome Registry Research Group.  
6 *N Engl J Med* 1998; 339:960–965.
- 7 3. Hobbs JB, Peterson DR, Moss AJ, et al.: Risk of aborted cardiac arrest or sudden cardiac  
8 death during adolescence in the long-QT syndrome. *JAMA* 2006; 296:1249–1254.
- 9 4. Schwartz PJ, Priori SG, Spazzolini C, et al.: Genotype-Phenotype Correlation in the  
10 Long-QT Syndrome. *Circulation American Heart Association*, 2001; 103:89–95.
- 11 5. Priori SG, Schwartz PJ, Napolitano C, et al.: Risk stratification in the long-QT  
12 syndrome. *N Engl J Med* 2003; 348:1866–1874.
- 13 6. Shimizu W, Antzelevitch C: Differential effects of beta-adrenergic agonists and  
14 antagonists in LQT1, LQT2 and LQT3 models of the long QT syndrome. *Journal of the*  
15 *American College of Cardiology* 2000; 35:778–786.
- 16 7. Fabritz L, Damke D, Emmerich M, et al.: Autonomic modulation and antiarrhythmic  
17 therapy in a model of long QT syndrome type 3. *Cardiovascular Research* 2010; 87:60–  
18 72.
- 19 8. Moss AJ, Zareba W, Hall WJ, et al.: Effectiveness and limitations of beta-blocker  
20 therapy in congenital long-QT syndrome. *Circulation* 2000; 101:616–623.
- 21 9. Priori SG, Napolitano C, Schwartz PJ, et al.: Association of long QT syndrome loci and  
22 cardiac events among patients treated with beta-blockers. *JAMA* 2004; 292:1341–1344.
- 23 10. Ahn J, Kim HJ, Choi J-I, et al.: Effectiveness of beta-blockers depending on the  
24 genotype of congenital long-QT syndrome: A meta-analysis. Aalto-Setälä K, ed: *PLoS*  
25 *ONE* 2017; 12:e0185680.
- 26 11. Wilde AAM, Moss AJ, Kaufman ES, et al.: Clinical Aspects of Type 3 Long-QT  
27 Syndrome: An International Multicenter Study. *Circulation* 2016; 134:872–882.
- 28 12. Younis A, Bos JM, Zareba W, et al.: Association Between Syncope Trigger Type and  
29 Risk of Subsequent Life-Threatening Events in Patients With Long QT Syndrome.  
30 *JAMA Cardiol* 2023; 8:775–783.
- 31 13. Schwartz PJ, Spazzolini C, Priori SG, et al.: Who Are the Long-QT Syndrome Patients  
32 Who Receive an Implantable Cardioverter-Defibrillator and What Happens to Them?:  
33 Data From the European Long-QT Syndrome Implantable Cardioverter-Defibrillator  
34 (LQTS ICD) Registry. *Circulation* 2010; 122:1272–1282.
- 35 14. Mazzanti A, Maragna R, Vacanti G, et al.: Interplay Between Genetic Substrate, QTc  
36 Duration, and Arrhythmia Risk in Patients With Long QT Syndrome. *Journal of the*  
37 *American College of Cardiology* 2018; 71:1663–1671.

- 1 15. Veltmann C, Barajas-Martinez H, Wolpert C, et al.: Further Insights in the Most  
2 Common *SCN5A* Mutation Causing Overlapping Phenotype of Long QT Syndrome,  
3 Brugada Syndrome, and Conduction Defect. *JAHA* 2016; 5:e003379.
- 4 16. Maragna R, Mazzanti A, Vacanti G, et al.: Abstract 20515: Clinical Course, Risk  
5 Stratification and Response to Beta-Blockers in Patients With Long QT Syndrome Type  
6 3. *Circulation American Heart Association*, 2017; 136:A20515–A20515.
- 7 17. Zeppenfeld K, Tfelt-Hansen J, de Riva M, et al.: 2022 ESC Guidelines for the  
8 management of patients with ventricular arrhythmias and the prevention of sudden  
9 cardiac death. *Eur Heart J* 2022; 43:3997–4126.
- 10 18. Hohmann S, Rudic B, Konrad T, et al.: Systematic ajmaline challenge in patients with  
11 long QT 3 syndrome caused by the most common mutation: a multicentre study.  
12 *Europace* 2017; 19:1723–1729.
- 13 19. Ruan Y, Liu N, Bloise R, Napolitano C, Priori SG: Gating Properties of *SCN5A*  
14 Mutations and the Response to Mexiletine in Long-QT Syndrome Type 3 Patients.  
15 *Circulation American Heart Association*, 2007; 116:1137–1144.
- 16 20. Zhu W, Mazzanti A, Voelker TL, et al.: Predicting Patient Response to the  
17 Antiarrhythmic Mexiletine Based on Genetic Variation. *Circulation Research American*  
18 *Heart Association*, 2019; 124:539–552.
- 19 21. Benhorin J, Taub R, Goldmit M, et al.: Effects of Flecainide in Patients With New  
20 *SCN5A* Mutation. *Circulation American Heart Association*, 2000; 101:1698–1706.
- 21 22. Moss AJ, Windle JR, Hall WJ, et al.: Safety and efficacy of flecainide in subjects with  
22 Long QT-3 syndrome (DeltaKPQ mutation): a randomized, double-blind, placebo-  
23 controlled clinical trial. *Ann Noninvasive Electrocardiol* 2005; 10:59–66.
- 24 23. Chorin E, Taub R, Medina A, Flint N, Viskin S, Benhorin J: Long-term flecainide  
25 therapy in type 3 long QT syndrome. *EP Europace* 2018; 20:370–376.
- 26 24. Mazzanti A, Maragna R, Faragli A, et al.: Gene-Specific Therapy With Mexiletine  
27 Reduces Arrhythmic Events in Patients With Long QT Syndrome Type 3. *Journal of the*  
28 *American College of Cardiology* 2016; 67:1053–1058.
- 29 25. Chorin E, Hu D, Antzelevitch C, et al.: Ranolazine for Congenital Long-QT Syndrome  
30 Type III: Experimental and Long-Term Clinical Data. *Circ Arrhythm Electrophysiol*  
31 [Internet] 2016 [cited 2021 Jan 28]; 9. Available from:  
32 <https://www.ahajournals.org/doi/10.1161/CIRCEP.116.004370>
- 33 26. Moss AJ, Zareba W, Schwarz KQ, Rosero S, McNitt S, Robinson JL: Ranolazine  
34 Shortens Repolarization in Patients with Sustained Inward Sodium Current Due to Type-  
35 3 Long-QT Syndrome. *Journal of Cardiovascular Electrophysiology* 2008; 19:1289–  
36 1293.
- 37 27. Vincent GM, Schwartz PJ, Denjoy I, et al.: High efficacy of beta-blockers in long-QT  
38 syndrome type 1: contribution of noncompliance and QT-prolonging drugs to the  
39 occurrence of beta-blocker treatment “failures.” *Circulation* 2009; 119:215–221.

## 1 9. Figure titles and captions

2 Figure 1. The cumulative probability of the first LQT3-triggered CE or SCE.

3 The probabilities [95%CI] of CE and SCE at the age of 40 were respectively 20.5% [14.2-29.0]  
4 and 9.9% [5.5-17.5].

5

6

7 Figure 2. Predicted age at first SCE (based on a Cox model) by beta-blocker treatment status  
8 and sex for asymptomatic patients (no prior syncope) and A. a QTc <500 ms. B. a QTc ≥500  
9 ms

10 In asymptomatic patients (no prior syncope) without a low-risk mutation p.(Glu1784Lys), beta-  
11 blocker treatment was associated with higher probability of SCE in both sexes, regardless of  
12 whether the QTc was below or above 500 ms (left and right panels, respectively).

13

14

15 Figure 3. Predicted age at first SCE (based on a Cox model) by beta-blocker treatment status  
16 and sex, for symptomatic patients (with prior syncope) and A. a QTc <500 ms B. a QTc ≥500  
17 ms

18 Beta-blocker treatment was associated with higher probability of SCE in patients with prior  
19 syncope (of both sexes, and regardless of whether the QTc was below or above 500 ms).

Table 1. Clinical characteristics and phenotypes of the population at diagnosis

	<b>Total population n=141</b>	<b>Probands n=50</b>	<b>Family members n=91</b>	<b>p</b>
<b>Male</b>	74 (52.5%)	29 (58.0%)	45 (49.4%)	0.33
<b>Age at diagnosis</b>				
Median [IQR]	24.0 [12.0-43.0]	20.0 [11.0-38.0]	25.0 [12.0-46.0]	0.20
<b>Diagnosis mode</b>				
Severe event	6 (4.3%)	5 (10.0%)	1 (1.1%)	
Syncope	16 (11.3%)	14 (28.0%)	2 (2.2%)	<0.001
Fortuitous	30 (21.3%)	30 (60.0%)	0	
Family screening	89 (63.1%)	1 (2.0%)*	88 (96.7%)	
<b>RR (ms) Mean ± SD</b>	922 ± 247	967 ± 261	898 ± 237	0.12
<b>QT (ms) Mean ± SD</b>	451 ± 76	480 ± 72	435 ± 74	<0.001
<b>QTc Bazett (ms)</b>				
Mean ± SD	473 ± 44	494 ± 41	462 ± 42	<0.001
<b>QTc Fridericia (ms)</b>				
Mean ± SD	465 ± 49	488 ± 44	452 ± 47	<0.001
<b>QTc</b>				
<480 ms	83 (59.7%)	23 (46.9%)	60 (66.7%)	
480–500 ms	23 (16.5%)	9 (18.4%)	14 (15.6%)	0.05
>500 ms	33 (23.7%)	17 (34.7%)	16 (17.8%)	
<b>LQTS risk score</b>				
Mean ± SD	2.7 ± 1.6	3.3 ± 1.3	2.4 ± 1.6	<0.001

\* One proband was diagnosed after sudden death of his (*SCN5A*-negative) father.

Table 2. Characteristics of the patients, according to initiation of beta-blocker treatment.

	<b>No beta blocker treatment n=80</b>	<b>Beta-blocker treatment n=61</b>	<b>p</b>
<b>Male</b>	39 (48.7%)	35 (57.4%)	0.31
<b>Probands</b>	12 (15.0%)	38 (62.3%)	<0.001
<b>Age at diagnosis</b>			
Mean $\pm$ SD	29.3 $\pm$ 20.0	27.7 $\pm$ 22.3	0.64
Median [IQR]	26.0 [12.5-44.0]	20.0 [11.0-43.0]	
<b>Symptomatic at diagnosis</b>	3 (3.7%)	23 (37.7%)	<0.001
<b>QTc Bazett (ms)</b>			
Mean $\pm$ SD	466 $\pm$ 45	483 $\pm$ 42	0.07
Median [IQR]	465 [424-496]	472 [447-497]	
<b>QTc Fridericia (ms)</b>			
Mean $\pm$ SD	459 $\pm$ 53	473 $\pm$ 42	0.07
Median [IQR]	458 [424-496]	472 [447-497]	
<b>LQTS risk score</b>			
Mean $\pm$ SD	2.5 $\pm$ 1.6	2.9 $\pm$ 1.5	0.22
Median [IQR]	3.0 [1.0-4.0]	3.0 [2.0-4.0]	



Table 3. Characteristics of patients with severe cardiac events (before and/or after diagnosis).

<b>Mutation</b>	<b>Proband</b>	<b>Sex</b>	<b>Description</b>	<b>Age at event</b>	<b>QTcB (ms)</b>	<b>Treatment</b>
<b>p.(Asp1790Gly)</b>	Yes	F	Appropriate shocks	21 years	546	0
<b>p.(Asp1790Gly)</b>	Yes	F	TdP (before diagnosis)	38 years	455	0
<b>p.(Glu1784Lys)</b>	No	M	Appropriate shocks	76 years	493	0
<b>p.(Pro336Leu)</b>	Yes	M	Syncope	4 years	521	0
<b>p.(Val1763Met)</b>	Yes	F	ACA SCD	9 years 1.5 years	515	Beta-blocker (nadolol) Beta-blocker (propranolol)
<b>p.(Phe1460Leu) homozygous</b>	Yes	M	Syncope	2 years	512	0
<b>p.(Val411Met)</b>	Yes	F	ACA Syncope	12 years 14 years	480	Beta-blocker (nadolol) 0
<b>p.(Glu1784Lys)</b>	No	M	ACA Syncope	15 years	480	Beta-blocker (nadolol)
<b>p.(Glu1784Lys)</b>	No	M	Appropriate shocks	58 years	518	0
<b>p.(Glu1784Lys)</b>	Yes	F	Syncope	32 years	461	0
<b>p.(Glu1784Lys)</b>	No	M	Appropriate shocks	36 years	461	0
<b>p.(Glu1784Lys)</b>	No	M	ACA (before diagnosis)	59 years	477	0
<b>p.(Glu1784Lys)</b>	No	M	Appropriate shock	66 years	477	0
<b>p.(Glu1784Lys)</b>	No	M	Syncope	20 years	576	0
<b>p.(Val411Met)</b>	Yes	M	Appropriate shock	49 years	576	0
<b>p.(Val411Met)</b>	Yes	M	VF (before diagnosis)	21 years	603	0
<b>p.(Val1777Met)</b>	Yes	M	TdP (before diagnosis)	15 years	441	0
<b>p.(Val411Met)</b>	Yes	M	ACA (before diagnosis)	5 years	568	0
<b>p.(Glu1784Lys)</b>	Yes	M	Aborted VF	7 years	568	Beta-blocker (nadolol)
<b>p.(Glu1784Lys)</b>	Yes	M	Appropriate shock	61 years	520	0
<b>p.(Val 411Met)</b>	Yes	F	ACA (before diagnosis)	20 years	533	0

Patients with symptom onset before 1 year of age were excluded from the analysis.

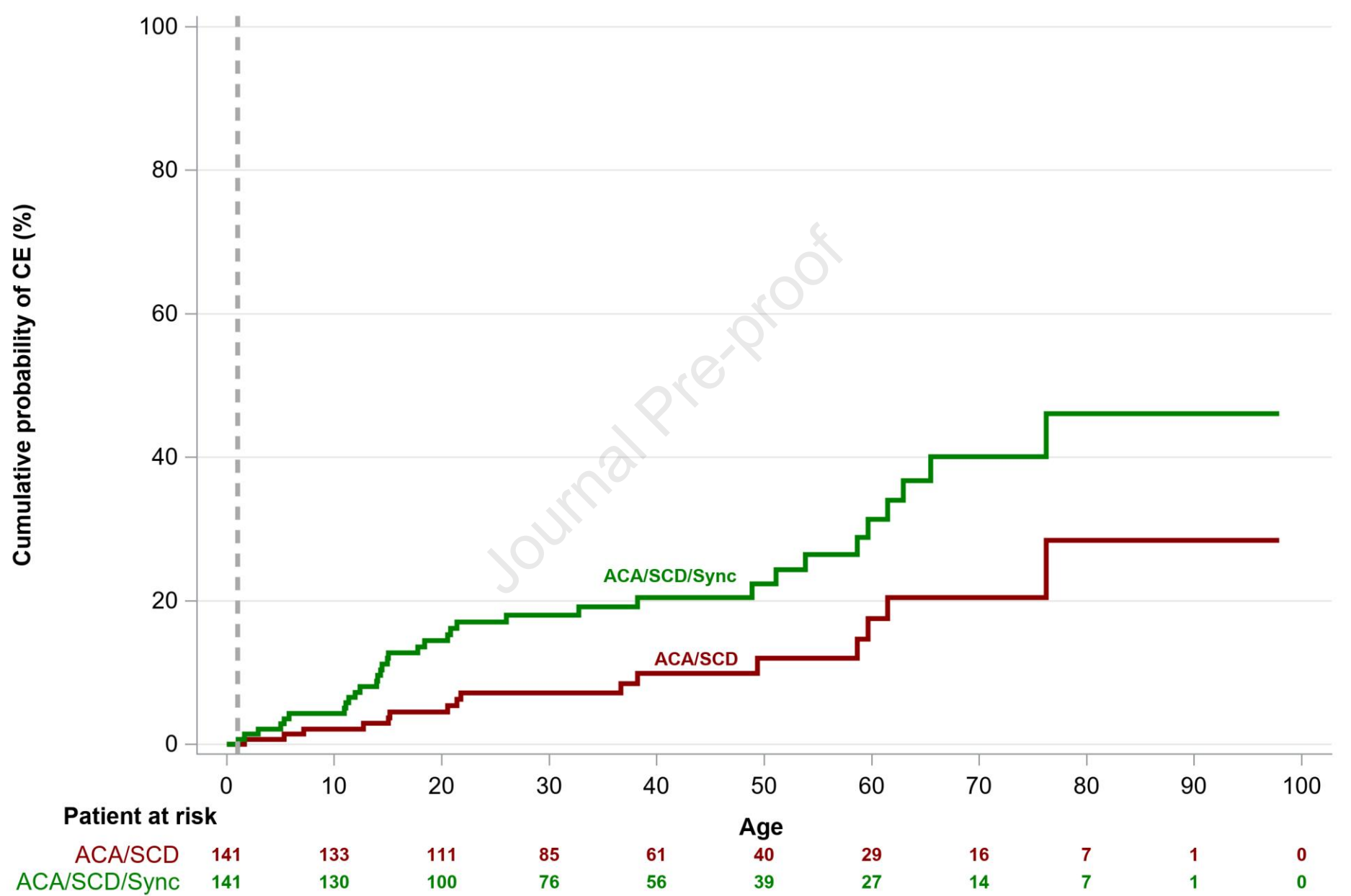
ACA: aborted cardiac arrest, AV: atrioventricular, VF: ventricular fibrillation, TdP: torsade de pointes, SCD: sudden cardiac death

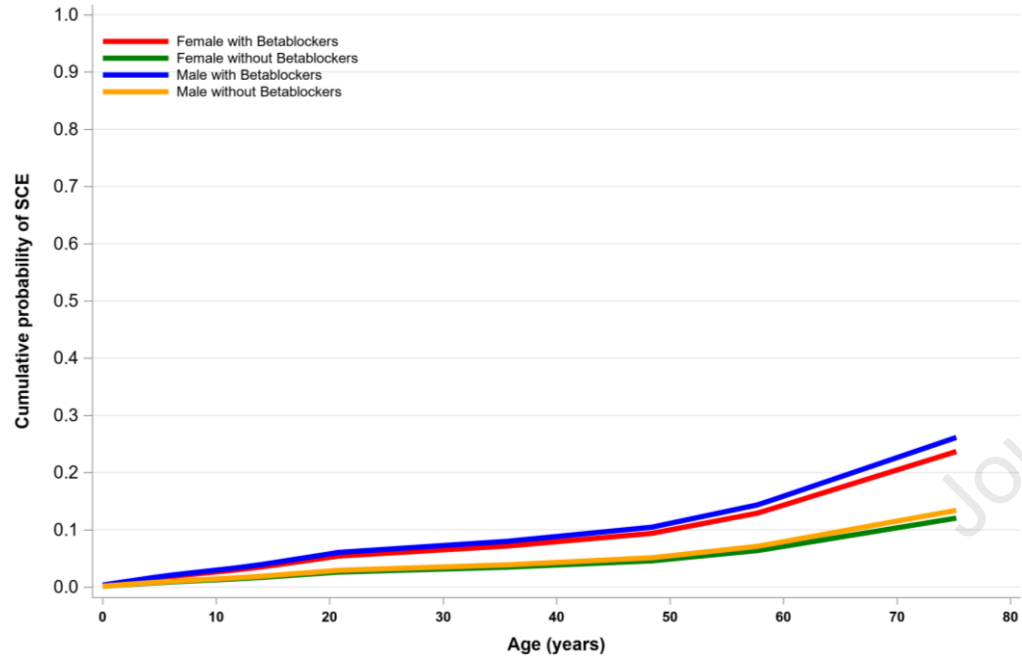
Table 4. Univariate and multivariate analysis of predictors of the first LQT3-triggered CE for combinations of syncope, ACA, and SCD

	Univariate analysis		Multivariate analysis	
	Hazard ratio [95% CI]	P value	Hazard ratio [95% CI]	P value
<b>Beta-blockers</b>	1.22 [0.4-4.2]	0.747	1.15 [0.3-4.0]	0.829
<b>p.(Glu1784Lys)</b>	0.55 [0.3-1.1]	0.096	0.76 [0.4-1.6]	0.464
<b>QTc duration</b> (per 10 ms increment)	1.14 [1.1-1.2]	<.001	1.12 [1.0-1.2]	0.005
<b>Sex</b> (ref: Female)	1.06 [0.5-2.1]	0.869	0.88 [0.4-1.8]	0.733
<b>Proband status</b>	5.37 [2.5-11.3]	<.001	4.07 [1.9-8.9]	<0.001

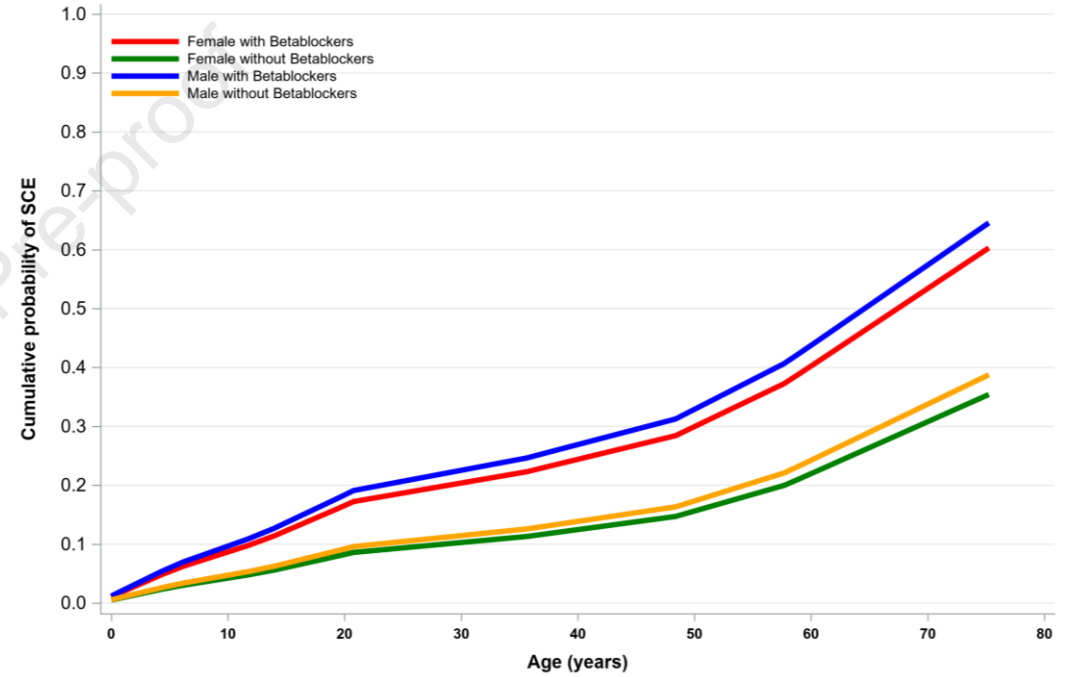
Table 5. Univariate and multivariate analysis of predictors of the first LQT3-triggered event for combinations of ACA and SCD

	Univariate analysis		Multivariate analysis	
	Hazard ratio [95% CI]	P value	Hazard ratio [95% CI]	P value
<b>Beta-blockers</b>	5.59 [1.9-16.0]	0.001	1.96 [0.5-8.5]	0.364
<b>p.(Glu1784Lys)</b>	0.54 [0.2-1.2]	0.120	1.03 [0.3-3.3]	0.959
<b>QTc duration</b> (per 10 ms increment)	1.20 [1.1-1.3]	<.001	1.11 [1.0-1.3]	0.106
<b>Sex</b> (ref.: female)	1.09 [0.5-2.3]	0.810	0.97 [0.3-3.1]	0.954
<b>Proband status</b>	12.01 [3.6-39.7]	<.001	8.13 [1.7-38.8]	0.009
<b>Syncope</b>	9.74 [3.3-28.5]	<.001	2.62 [0.5-11.3]	0.197

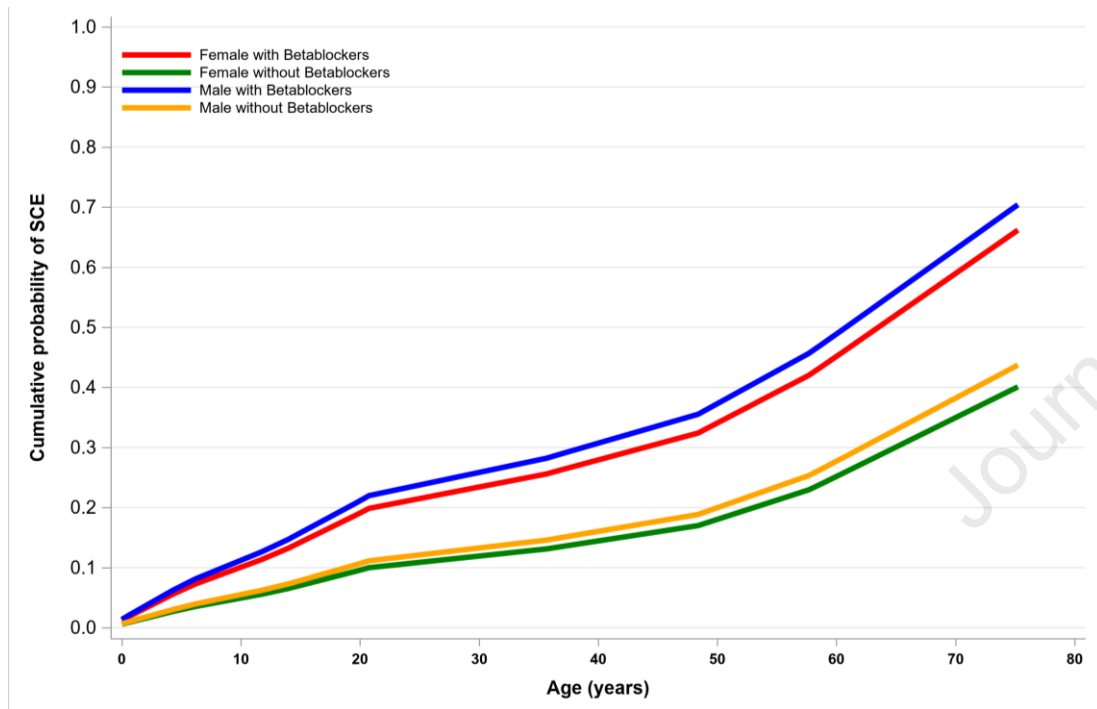




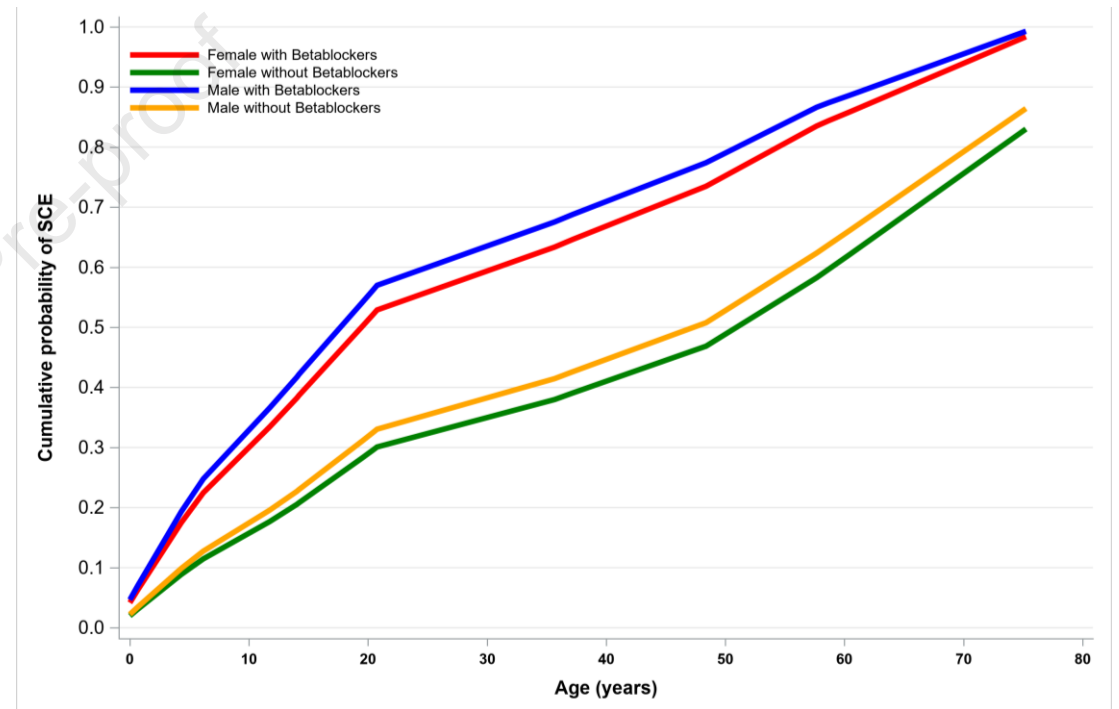
A.



B.



A.



B.

## SUPPLEMENTAL METHOD

Genetic testing

Common variants were filtered out by checking their minor allele frequency in the GnomAD database (<https://gnomad.broadinstitute.org/>); variants with minor allele frequency >0.1% were classified as polymorphisms. Variants (missense, non-sense, truncating, and in-frame indel variants) were then classified as pathogenic, likely pathogenic variants or of uncertain significance. Variants were classified by two of the investigators (VF and FK) according to the American College of Medical Genetics and Genomics criteria, using disease-causative mutation databases, the CLINVAR database ([www.ncbi.nlm.nih.gov/clinvar](http://www.ncbi.nlm.nih.gov/clinvar)), localization to highly conserved amino acid residues/key functional domains, co-segregation of the variant with the disease phenotype, evidence of perturbed ion channel function from *in vitro* functional studies, and bioinformatics algorithms indicating the variants' likelihood of pathogenicity: Sorting Intolerant From Tolerant, MutationTaster, Polyphen-2, Combined Annotation Dependent Depletion, and Align.

Pre-treatment ECG measurements

Pre-treatment ECG measurements were performed on three consecutive QRS-T complexes, using on-screen calipers (Rigel software, AMPS LLC, New York, NY). The end of the T-wave was determined using the tangent method or (if a U wave was present) at the trough between the T and U waves. The mean RR and mean QT intervals were used to calculate the QTcB and QTcF interval, using Bazett's and Fridericia's formulae, respectively<sup>1</sup>. The QTc was expressed as a continuous value and in three risk categories. We calculated the LQTS diagnostic score developed by Schwartz et al.<sup>2-4</sup>

1. Rautaharju PM, Surawicz B, Gettes LS: AHA/ACCF/HRS Recommendations for the Standardization and Interpretation of the Electrocardiogram. *Circulation American Heart Association*, 2009; 119:e241–e250.

2. Priori SG, Wilde AA, Horie M, et al.: HRS/EHRA/APHRS expert consensus statement on the diagnosis and management of patients with inherited primary arrhythmia syndromes: document endorsed by HRS, EHRA, and APHRS in May 2013 and by ACCF, AHA, PACES, and AEPC in June 2013. *Heart Rhythm* 2013; 10:1932–1963.
3. Priori SG, Blomström-Lundqvist C, Mazzanti A, et al.: 2015 ESC Guidelines for the management of patients with ventricular arrhythmias and the prevention of sudden cardiac death: The Task Force for the Management of Patients with Ventricular Arrhythmias and the Prevention of Sudden Cardiac Death of the European Society of Cardiology (ESC). Endorsed by: Association for European Paediatric and Congenital Cardiology (AEPC). *Eur Heart J* 2015; 36:2793–2867.
4. Schwartz PJ, Moss AJ, Vincent GM, Crampton RS: Diagnostic criteria for the long QT syndrome. An update. *Circulation* 1993; 88:782–784.



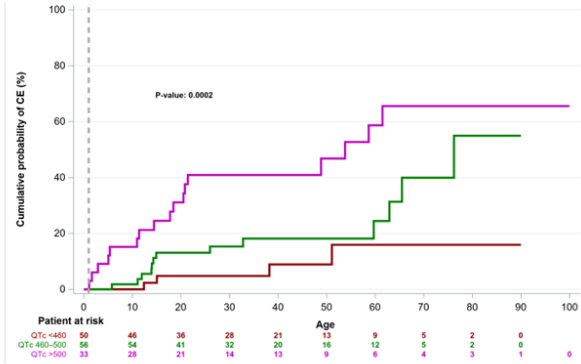
Supp Table S8. Published cohorts including patients with LQT3

	Population	Age at diagnosis (years)	QTc	Variants	Beta-blockers n (%)	ICD n (%)	Follow-up
<b>Zareba 1998</b>	62 patients Males: n=35 (66%)	18 (median)	510±48 ms	-	24 (39)	1 (2)	Cardiac events until the age of 40: - ≥ 1 cardiac event: 11 (18) - ≥ 2 cardiac event: 3 (5) ACA: 2 (3) SCD: 2 (3)
<b>Moss 2000</b>	28 patients	-	530±50 ms	-	-	-	Before beta-blockers: -Cardiac event (syncope, ACA, or SCD) rate: 0.03±0.07 per patient per year -ACA or death: 0  After beta-blockers: -Cardiac event rate: 0.03±0.08 per patient per year -ACA or death: 3 (10%)
<b>Schwartz 2001</b>	65 patients Probands: n=21 (32%) Males: 42%	-	506 ms	-	18	-	Recurrence of a cardiac event (syncope, ACA, or SCD) on beta blockers: 9/18 (50%)
<b>Priori 2004</b>	28 patients	22±17	511±45 ms	-	All (the study's inclusion criteria)	-	Follow-up pre-therapy: 18±16 years Follow up on therapy: 4.2±3.9 years  Pre-therapy: -events (syncope, ACA, SCD, VT, TdP):16/28 (57%) -cardiac arrest: 5/28 (18%)  On therapy: -events: 9/28 (32%) -cardiac arrest: 4/28 (14%)

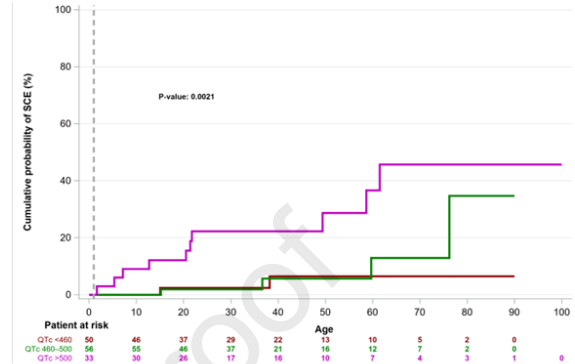
<b>Priori 2003</b>	55 patients Male: n=25 (45%)	-	-	-	-	-	Observation period: 25+18 years.  Events (syncope/ACA/SCD) before 40 years of age and before therapy: 23 (42%)
<b>Tester 2005</b>	26 patients  Male: n=8 (30.8%)	24±17	494±61 ms  Schwartz score ≥ 4: 24%	32 variants (31 missense)	-	-	-
<b>Hobbs 2006</b>	80 patients	-	-	-	-	-	-
<b>Schwartz 2010</b>	31 patients Males: n=11 (36%)	-	484±66 ms >500 ms: n=12 (40%) ≤440 ms: n=10 (33%)	-	9 (75)	All (the study's inclusion criterion)	Events (syncope/ACA) on therapy: 5 (42%)
<b>Wilde 2016</b>	391 patients Probands: n=82 (21%) Males: n=174 (45%)	28±20	476±57 ms	Missense: n=322 (82)  p.(Gly1784Lys): n=69 (18)	111 (29)	69 (18)	Syncope/ACA/SCD: 38% at 40 years of age ACA/SCD: 20% at 40 years of age  Beta-blockers in females with syncope, ACA or SCD: HR=0.17 [0.04;0.70] p=0.014. Beta-blockers in males with syncope, ACA or SCD: HR=0.895 [0.40;2.21] p=0.895.  Beta-blockers in females with ACA or SCD: HR=0.20 [0.05;0.87] p=0.032. Beta-blockers in males with ACA or SCD: HR=0.51 [0.14;1.88] p=0.308.
<b>Mazzanti 2018</b>	196 patients	-	≤ 460 ms: n=69 (35%)	VUS included (11%)	All (the study's inclusion criterion)	-	Life-threatening arrhythmic events: 19/1739 person-years

<b>Wang 2021</b>	211 patients	-	-	-	-	78 (18.8)	-
<b>Our cohort</b>	141 patients Probands: n=50 (35%) Males: n=74 (52%)	25 (median)	473±44 ms Probands: 494±41 ms	Only LP/P variants Missense: n=139 (99%) p.(Gly1784Lys): n=71 (50)	61 (43)	24 (17)	CE = 20.5% at 40 years of age SCE = 9.9% at 40 years of age  Beta-blockers, CE: HR=1.15 [0.3-4.0], p=0.829 Beta-blockers, SCE: HR=3.43 [1.1-10.8], p=0.036

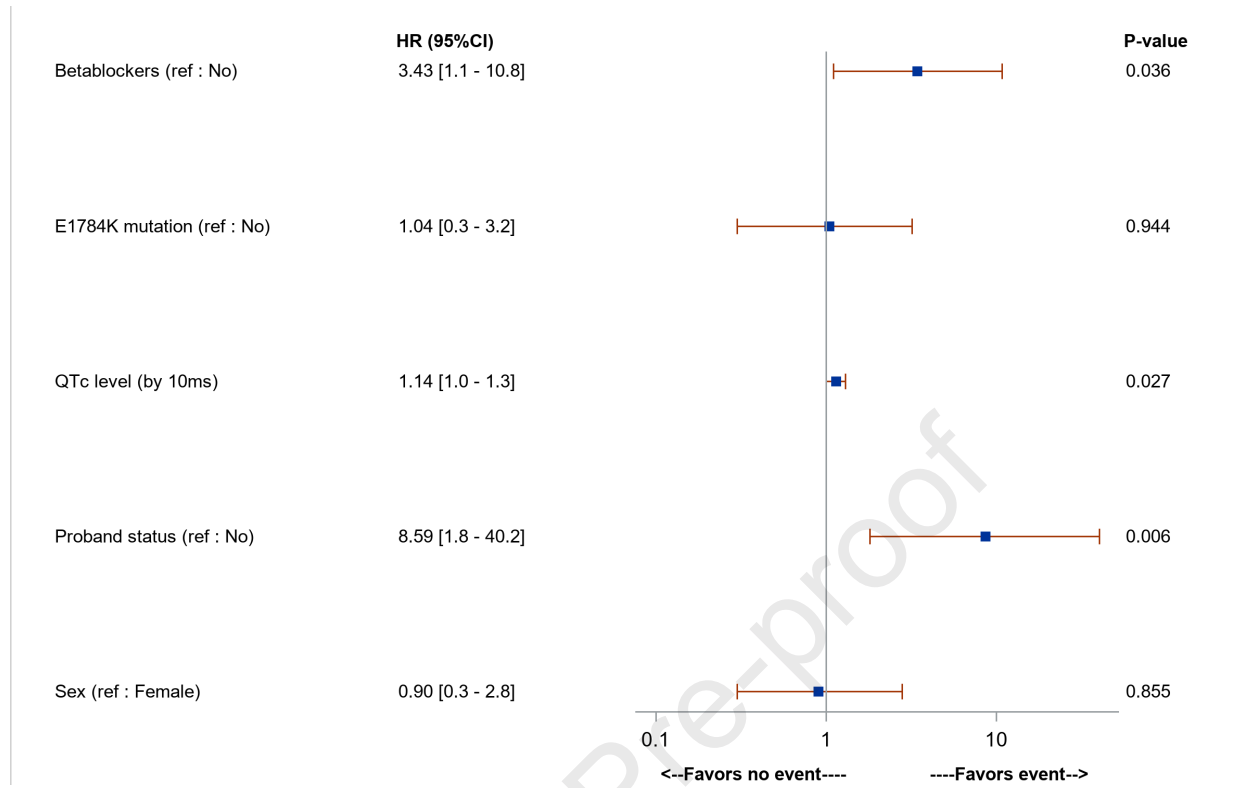
ACA: aborted cardiac arrest, CE: cardiac event, LP: likely pathogenic, P: pathogenic, SCE: severe cardiac event, SCD: sudden cardiac death, TdP: torsade de pointe, VT: ventricular tachycardia

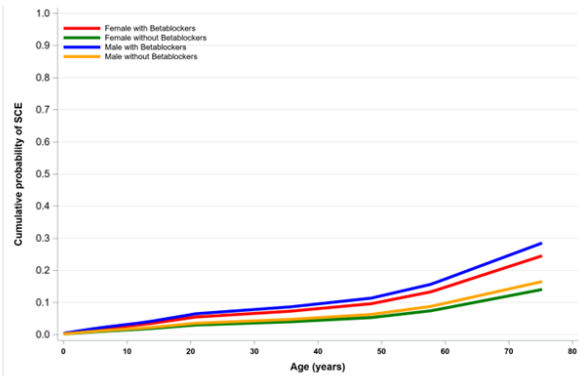


A.

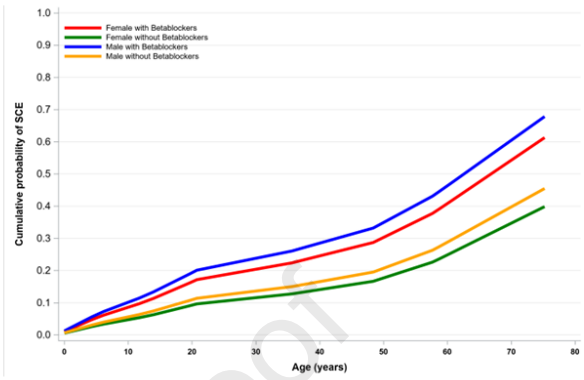


B.

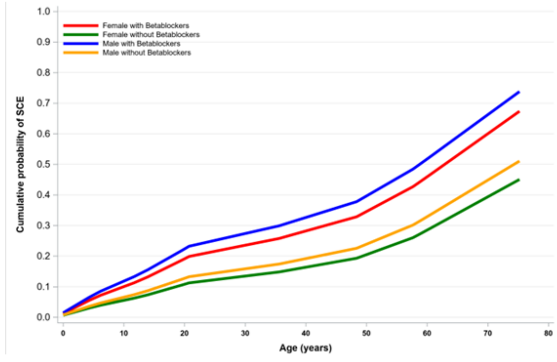




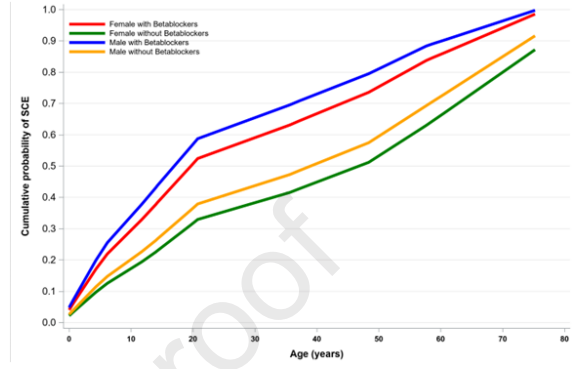
A.



B.



A.



B.

Supplemental Table S1. Variants included in the study.

cNomen	pNomen	coding effect	exon	domain	gnomad Allele Count	gnomad V2.1.2 AllFreq	ACMG	ACMG classification	Labs Classification	CADD	Probands (n)	Family members (n)
c.820G>A	p.(Gly274Ser)	missense	7	DI- S5-Pore	0	-	PM2 PP2 PP3	VUS	LP	29,7	1	0
c.1007C>T	p.(Pro336Leu)	missense	9	DI- S5-Pore	0	-	PM2 PP2 PP3 PP5	LP	P	25,6	1	0
c.1109C>T	p.(Thr370Met)	missense	9	DI-Pore	0	-	PM1 PM2 PP2 PP3	LP	LP	27,1	1	3
c.1231G>A	p.(Val411Met)	missense	10	DI-S6	0	-	PM2 PP2 PP3 PP5	P	P	28,6	6	0
c.2554A>G	p.(Ile852Val)	missense	16	DII-S5	0	-	PM1 PM2 PP2 PP3	LP	P	21,7	1	0
c.2822C>T	p.(Ser941Phe)	missense	17	Linker DII-III	0	-	PM2 PM5 PP2 PP3	LP	P	28,4	1	0
c.3974A>G	p.(Asn1325Ser)	missense	23	DIII-S4-S5	0	-	PM1 PM2 PP5 PP2 PP3	LP	P	23,5	1	1
c.3988G>A	p.(Ala1330Thr)	missense	23	DIII-S4-S5	0	-	PM2 PM5 PP2 PP3; PP5	P	P	27,1	1	0
c.3995C>A	p.(Pro1332Gln)	missense	23	DIII-S4-S5	0	-	PM1 PM2 PM5 PP2 PP3	LP	P	<b>27,3</b>	1	0
c.4380C>A	p.(Phe1460Leu)	missense	25	DIII-S6	0	-	PM1 PM2 PP2 PP3	LP	P	24,5	1	2
c.4442G>T	p.(Gly1481Val)	missense	26	Linker DIII-IV	0	-	PM2 PM5 PP2 PP3	LP	P	24,2	1	0
c.4473G>T	p.(Gln1491His)	missense	26	Linker DIII-IV	0	-	PS3 PM2 PP2 PP3	LP	P	24,2	1	0
c.4501C>G	p.(Leu1501Val)	missense	26	Linker DIII-IV	5	0,00002	PM1 PM2 PP2 PP3 PP5	LP	LP	23,9	1	0
c.4931G>A	p.(Arg1644His)	missense	28	DIV-S4-S5	0	-	PP5 PM1 PM2 PM5 PP2 PP3	P	P	25,1	2	0
c.5272_5274del	p.(Ile1758del)	in-frame	28	DIV-S6	0	-	PM1 PM2 PP3 PP5	LP	LP	-	1	3
c.5287G>A	p.(Val1763Met)	missense	28	DIV-S6	0	-	PM1 PM2 PP5 PP2 PP3	LP	P	27,2	1	1
c.5329G>A	p.(Val1777Met)	missense	28	Cterm	5	0,000018	PM2 PP2 PP3 PP5	LP	LP	26,9	2	7
c.5350G>A	p.(Glu1784Lys)	missense	28	Cterm	0	-	PP5 PM1 PM2 PP2 PP3	P	P	24,9	18	53



c.5357T>C	p.(Leu1786Pro)	missense	28	Cterm	0	-	PM2 PP2 PP3 PP5	LP	P	27,9	1	0
c.5368G>A	p.(Asp1790Asn)	missense	28	Cterm	3	0,000012	PM1 PM2 PM5 PP2 PP3	LP	LP	29,1	6	7
c.5369A>G	p.(Asp1790Gly)	missense	28	Cterm	0	-	PM1 PM2 PP2 PP3 PP5	LP	P	28,1	3	15
c.5384A>G	p.(Tyr1795Cys)	missense	28	Cterm	0	-	PM1 PM2 PM5 PP5 PP2 PP3	LP	P	28,3	1	1
c.5546A>G	p.(His1849Arg)	missense	28	Cterm	0	-	PM1 PM2 PP2 PP3 PP5	LP	P	25,6	1	0

ACMG: American College of Medical Genetics, AGVGD: Align Grantham Variation Grantham Deviation, CADD: Combined Annotation Dependent Depletion, MPA: MoBiDiC prioritization algorithm, SiFT: Sorting Intolerant From Intolerant

**SUPPLEMENTAL MATERIAL**Supplemental figure legends

Supplemental Figure 1. Cumulative probability of A. cardiac events and B. severe cardiac events, according to the QTc prolongation.

Red curve: patients with  $QTc < 460$  ms. Green curve: patients with  $450 \text{ ms} \leq QTc \leq 500$  ms.

Pink curve: patients with  $QTc > 500$  ms.

SCE: severe cardiac event. CE: cardiac event.

Supplemental Figure 2. Multivariate analysis of predictors of the first LQT3-triggered severe cardiac event (syncope excluded).

Supplemental Figure 3. Predicted age at first SCE (based on a Cox model) by beta-blocker treatment status and sex for asymptomatic patients (no prior syncope) and A. a  $QTc < 500$  ms.  
B. a  $QTc \geq 500$  ms

In asymptomatic patients (no prior syncope) without a low-risk mutation p.(Glu1784Lys), beta-blocker treatment was associated with higher probability of SCE in both sexes, regardless of whether the QTc was below or above 500 ms (left and right panels, respectively).

Supplemental Figure 4. Predicted age at first SCE (based on a Cox model) by beta-blocker treatment status and sex, for symptomatic patients (with prior syncope) and A. a  $QTc < 500$  ms  
B. a  $QTc \geq 500$  ms

Beta-blocker treatment was associated with higher probability of SCE in patients with prior syncope (of both sexes, and regardless of whether the QTc was below or above 500 ms).

Supplemental Table S2. Clinical characteristics and outcome by age at diagnosis (&lt;1 or &gt;1 year of age)

	<b>No symptoms before 1 year of age n=141</b>	<b>Symptoms before 1 year of age n=6</b>	<b>p</b>
<b>Age at diagnosis</b>			
Median (IQR)	24.0 (12.0-43.0)	0 (0.0-0.0)	0.001
<b>Males</b>	74 (52.5%)	3 (50.0%)	0.90
<b>Probands</b>	50 (35.5%)	4 (66.7%)	0.12
<b>Diagnosis mode</b>			
Severe cardiac event	6 (4.3%)	4 (66.7%)	<0.001
Syncope	16 (11.3%)	1 (16.7%)	
Fortuitous	30 (21.3%)	0 (0%)	
Family screening	89 (63.1%)	1 (16.7%)	
<b>QTc Bazett (ms)</b>			
Mean $\pm$ SD	473 $\pm$ 44	544 $\pm$ 176	0.004
Median [IQR]	468 [444-497]	447 [425-592]	
<b>QTc Fridericia (ms)</b>			
Mean $\pm$ SD	465 $\pm$ 49	522 $\pm$ 187	0.03
Median [IQR]	464 [430-497]	448 [418-548]	
<b>LQTS risk score</b>			
Mean $\pm$ SD	2.7 $\pm$ 1.6	2.8 $\pm$ 1.7	0.86
Median [IQR]	3.0 [1.0-4.0]	2.5 [2.0-3.0]	
<b>Symptomatic at diagnosis</b>	26 (18.4%)	5 (83.3%)	<0.001
<b>Symptomatic during follow-up</b>	20 (14.2%)	4 (66.7%)	<0.001

Supplemental Table S3. Characteristics of the six patients with symptom onset before the age of 1 year

	#1	#2	#3	#4	#5	#6
<b>Status</b>	Proband	Proband	Proband	Proband	Relative	Relative
<b>Sex</b>	Male	Male	Male	Female	Female	Female
<b>Mutation</b>	p.(Gly1481 Val)	p.(Gln1491 His)	p.(Val411 Met)	p.(Ile1758 del)	p.(Ile1758 del)	p.(Asp1790 Gly)
<b>Age at diagnosis</b>	0 (birth)	0 (birth)	0 (birth)	2 months	1 months	3 months
<b>QTcB (ms)</b>	-	833	592	447	425	422
<b>LQTS risk score</b>	-	5.5	3	2.5	2	1
<b>Diagnostic mode</b>	2/1 AV block. Electrical storm	2/1 AV block. Electrical storm	2/1 AV block	Sustained VA at two months (cardioversion)	Sustained VA at one month (cardioversion)	Family screening
<b>Outcome</b>	1. Pacemaker 2. Beta-blocker 3. Refractory electrical storm despite mexiletine treatment	1. Pacemaker 2. Beta-blockers (propranolol) 3. Refractory electrical storm	1. Pacemaker 2. Beta-blocker (propranolol) 3. SCD (39 months)	1. No events during 44 years of follow-up (off beta-blockers)	1. No events during 51 years of follow-up (off beta-blockers)	1. Brief, resolved, unexplained event at 2 months 2. Beta-blockers (propranolol) 3. No recurrence of cardiac

	4. Death (2.5 months)	despite mexiletine treatment 4. Death (4 months)				event after 7 years follow-up
--	-----------------------------	--	--	--	--	-------------------------------------

AV: atrio ventricular, VA: ventricular arrhythmia, SCD: sudden cardiac death

Journal Pre-proof

Supplemental Table S4. Comparisons of patients carrying the p.(Glu1784Lys) mutation vs. other mutations.

	<b>Other mutations n=70</b>	<b>p.(Glu1784Lys) mutation n=71</b>	<b>p</b>
<b>Probands</b>	32 (45.7%)	18 (25.4%)	0.012
<b>Male</b>	34 (48.6%)	40 (56.3%)	0.36
<b>Age at diagnosis</b>			
Mean $\pm$ SD	26.9 $\pm$ 22.3	30.3 $\pm$ 19.6	0.34
Median [IQR]	19.5 [10.0-43.0]	27.0 [13.0-45.9]	
<b>Diagnosis mode</b>			
Severe event	5 (7.1%)	1 (1.4%)	0.047
Syncope	11 (15.7%)	5 (7.0%)	
Fortuitous	17 (24.3%)	13 (18.3%)	
Familial screening	37 (52.9%)	52 (73.2%)	
<b>QTc Bazett (ms)</b>			
Mean $\pm$ SD	472 $\pm$ 50	475 $\pm$ 38	0.75
Median [IQR]	466 [438-498]	474 [450-493]	
<b>QTc Fridericia (ms)</b>			
Mean $\pm$ SD	458 $\pm$ 54	472 $\pm$ 42	0.11
Median [IQR]	458 [428-493]	470 [436-500]	
<b>LQTS risk score</b>			
Mean $\pm$ SD	2.4 $\pm$ 1.6	2.9 $\pm$ 1.5	0.06
Median [IQR]	2.5 [1.0-4.0]	3.0 [2.0-4.0]	
<b>Symptomatic at diagnosis</b>	18 (25.7%)	8 (11.3%)	0.027
<b>Symptomatic during follow-up</b>	11 (15.7%)	9 (12.7%)	0.61

Supplemental Table S5. Comparisons of patients who were asymptomatic vs. symptomatic at diagnosis.

	<b>Symptomatic patients</b> <b>n=26</b>	<b>Asymptomatic patients</b> <b>n=115</b>	<b>p</b>
<b>Male</b>	16 (61.5%)	58 (50.4%)	0.31
<b>Probands</b>	20 (76.9%)	30 (26.1%)	<0.001
<b>Age at diagnosis</b>			
Mean $\pm$ SD	24.4 $\pm$ 19.4	29.6 $\pm$ 21.3	0.25
Median [IQR]	19.0 [11.0-36.0]	25.0 [12.0-45.0]	
<b>Age at symptom onset (years)</b>			
Mean $\pm$ SD	22.4 $\pm$ 19.1	-	-
Median [IQR]	14.0 [10.7-33.5]		
<b>Time interval between symptom onset and diagnosis (months)</b>			
Mean $\pm$ SD	23.4 $\pm$ 61.4	-	-
Median [IQR]	0 [0.0-5.0]		
<b>QTc Bazett (ms)</b>			
Mean $\pm$ SD	504 $\pm$ 47	466 $\pm$ 41	<0.001
Median [IQR]	495 [476-526]	463 [440-490]	
<b>QTc Fridericia (ms)</b>			
Mean $\pm$ SD	503 $\pm$ 46	456 $\pm$ 46	<0.001
Median [IQR]	491 [472-532]	457 [427-488]	
<b>LQTS risk score</b>			
Mean $\pm$ SD	4.1 $\pm$ 1.3	2.3 $\pm$ 1.4	<0.001
Median [IQR]	4.2 [3.5-5.0]	2.5 [1.0-3.5]	

Supplemental Table S6. Clinical characteristics of the patients, according to the occurrence of CEs during follow-up

	<b>No symptoms during follow-up n=121</b>	<b>Severe cardiac event during follow-up n=12</b>	<b>Syncope during follow-up n=8</b>	<b>P</b>
<b>Male</b>	63 (52.1%)	8 (66.7%)	3 (37.5%)	0.43
<b>Probands</b>	39 (32.2%)	9 (75.0%)	2 (25.0%)	0.01
<b>Age at diagnosis</b>				
Mean $\pm$ SD	28.8 $\pm$ 20.9	27.5 $\pm$ 25.4	27.2 $\pm$ 16.1	0.96
Median [IQR]	24.0 [12.0-43.0]	20.5 [3.5-56.0]	23.5 [13.5-40.5]	
<b>Diagnosis mode</b>				
Severe event	4 (3.3%)	2 (16.7%)	0 (0%)	<0.001
Syncope	9 (7.4%)	4 (33.3%)	3 (37.5%)	
Fortuitous	26 (21.5%)	4 (33.3%)	0 (0%)	
Family screening	82 (67.8%)	2 (16.7%)	5 (62.5%)	
<b>QTc Bazett (ms)</b>				
Mean $\pm$ SD	468 $\pm$ 43	516 $\pm$ 35	494 $\pm$ 48	<0.001
<b>LQTS risk score</b>				
Mean $\pm$ SD	2.5 $\pm$ 1.5	4.0 $\pm$ 1.3	3.9 $\pm$ 1.5	<0.001



Supplemental Table S7. Characteristics of the five patients who died from LQTS

	#1	#2	#3	#4	#5
<b>Status</b>	Proband	Proband	Proband	Proband	Proband
<b>Sex</b>	Male	Male	Male	Female	Male
<b>Mutation</b>	p.(Gly1481Val)	p.(Pro336Leu)	p.(Gln1491His)	p.(Val1763Met)	p.(Val411Met)
<b>Age at diagnosis</b>	0 (birth)	60 months	0 (birth)	0 (birth)	0 (birth)
<b>QTcB (ms)</b>	-	521	833	515	592
<b>LQTS risk score</b>	-	5	5.5	3	3
<b>Diagnostic mode</b>	2/1 AV block Electrical storm	Polymorphic VT/VF during anesthesia	2/1 AV block Electrical storm	Atrial premature beats	2/1 AV block
<b>Evolution</b>	1. Pace-maker 2. Beta-blocker 3. Refractory electrical storm despite mexiletine treatment 4. Death	1. Pace-maker 2. Beta- blocker 3. ACA (110 months) 4. SCD	1. Pace-maker 2. Beta-blockers 3. Refractory electrical storm despite mexiletine treatment 4. Death	1. Beta-blocker 2. SCD	1. Pace-maker 2. Beta-blocker 3. SCD
<b>Age at death (months)</b>	2.5	124	4	20	39

ACA: aborted cardiac arrest, AV: atrioventricular, VF: ventricular fibrillation, VT : ventricular tachycardia, SCD : sudden cardiac death