

Supplemental Figures

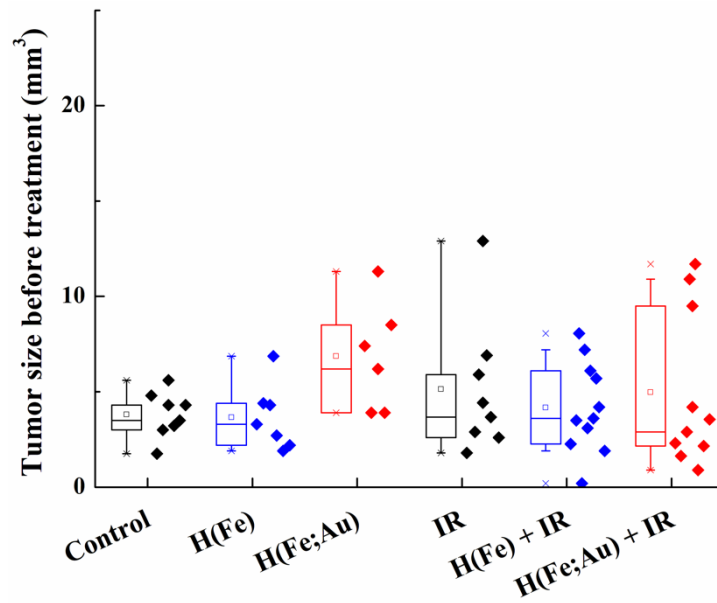


Figure SI-1 – Initial tumor size distribution (day 9/10) within the 6 groups of mice. The inner walls in the boxes represent the median. The lower and upper walls of the boxes represent respectively the 1st and 3rd quartiles. Lower and upper ticks represent the 1st and 9th deciles.

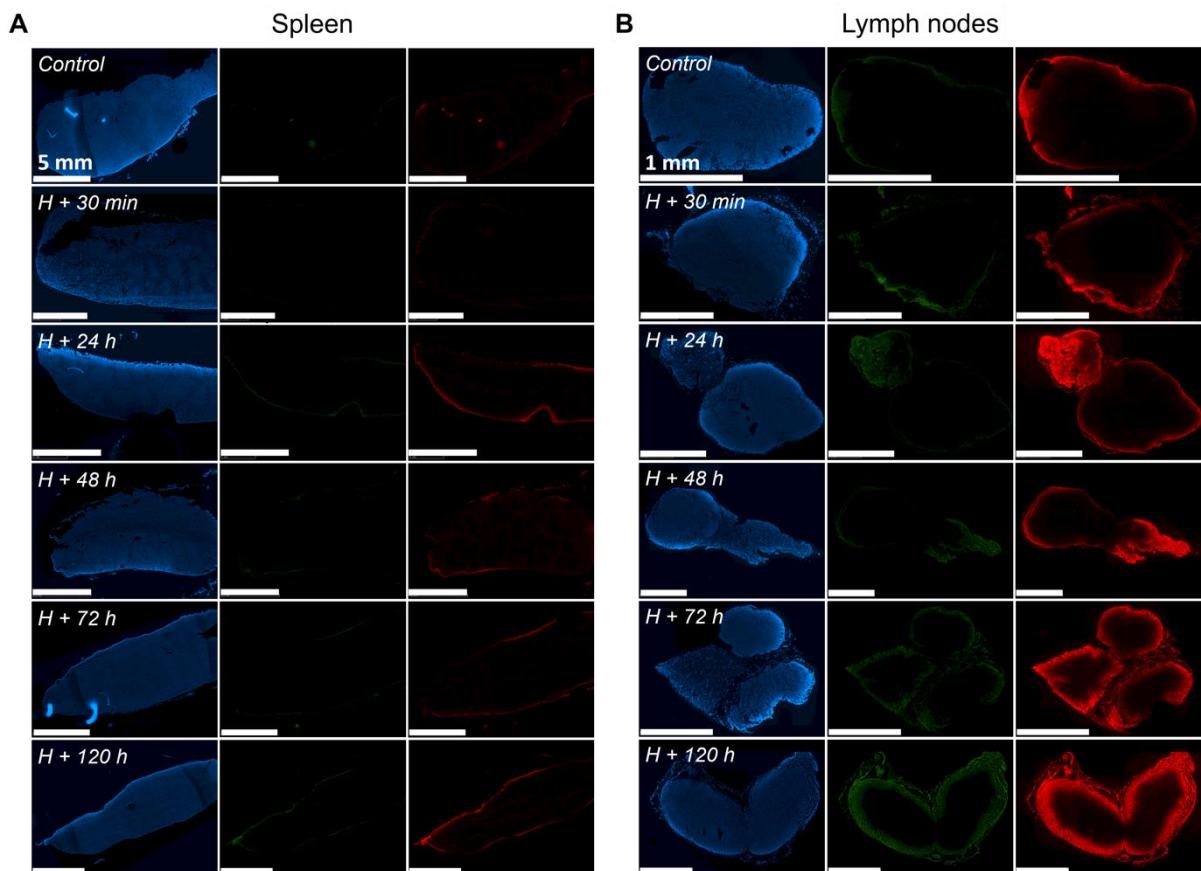


Figure SI- 2 – Confocal microscopy fluorescence of slices of **(A)** spleen and **(B)** cervical lymph nodes of mice at different times after intratumoral injection ($t=0$) of BODIPY-loaded H(Fe). Tissues were stained with DAPI and imaged for DAPI (blue) and BODIPY (green + red) fluorescence.

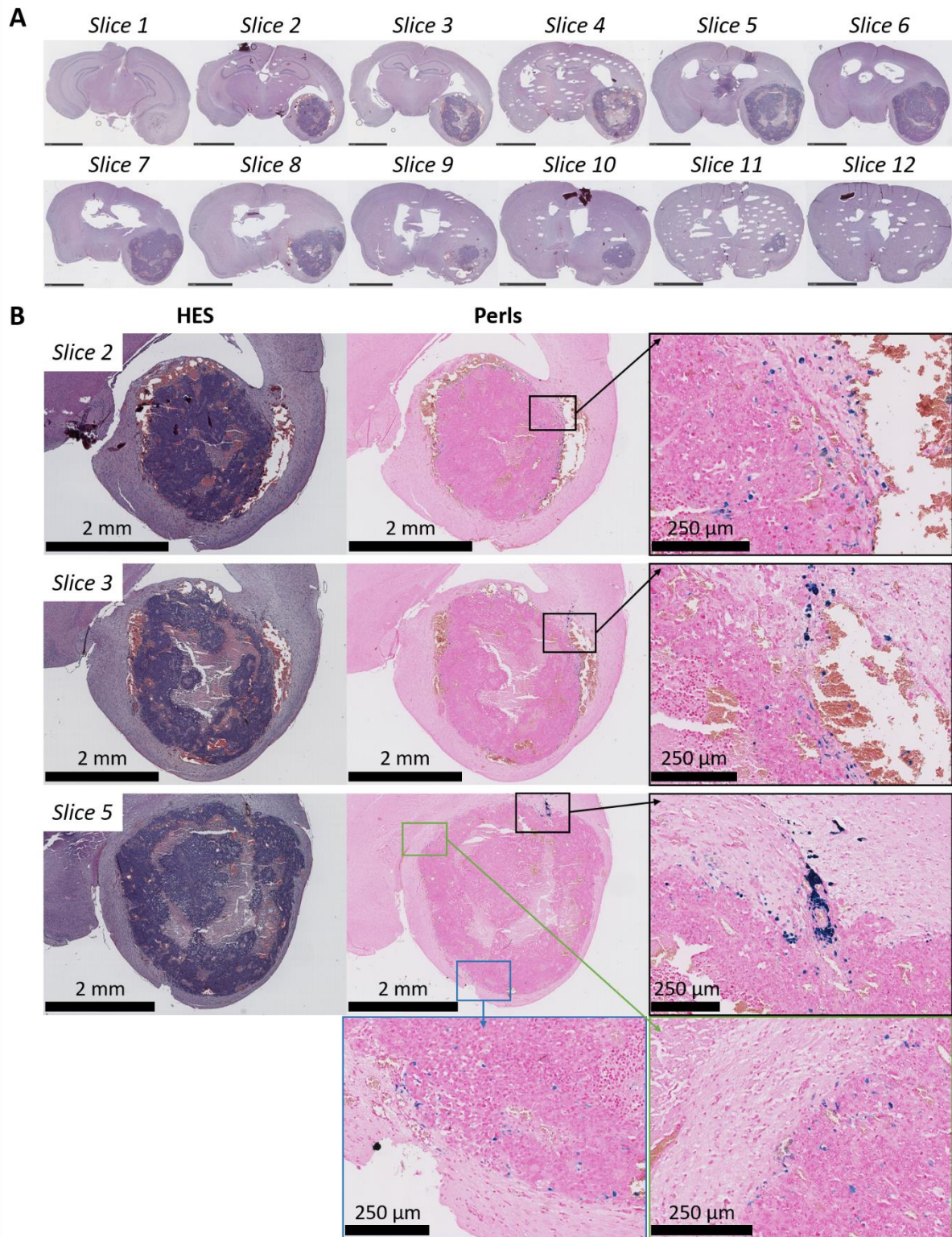


Figure SI-3 – Microscopy observations of slices of the brain of mouse #1082, after HES and Perls staining. **(A)** Slices (1 to 12) were performed every 100 μ m. **(B)** Enlargement centered on the tumor, of slices 2; 3 and 5, with HES and Perls staining. Iron (blue) is clearly present at the edges of the tumor.

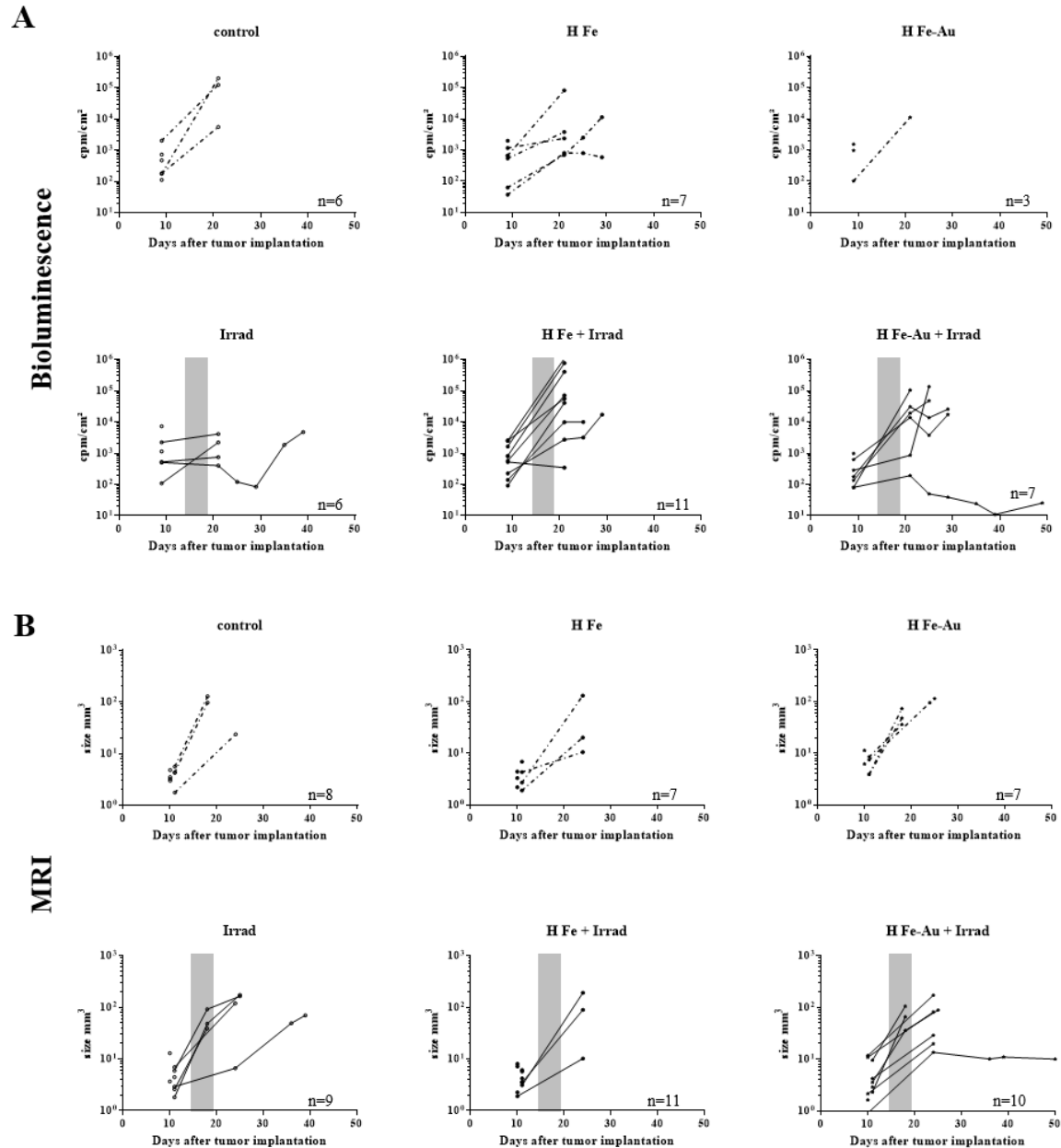


Figure SI- 4 Bioluminescence and MRI follow-up. The hybridosomes® H(Fe) or H(Fe;Au) were intratumorally injected at day 14 or 16 after GL261-Luc+ cells brain implantation. Irradiation started at the time of injection, for 5 days. Mice were monitored by **(A)** Bioluminescence (intensity) and **(B)** MRI (tumor volume). The grey zone represents the radiotherapy sessions.

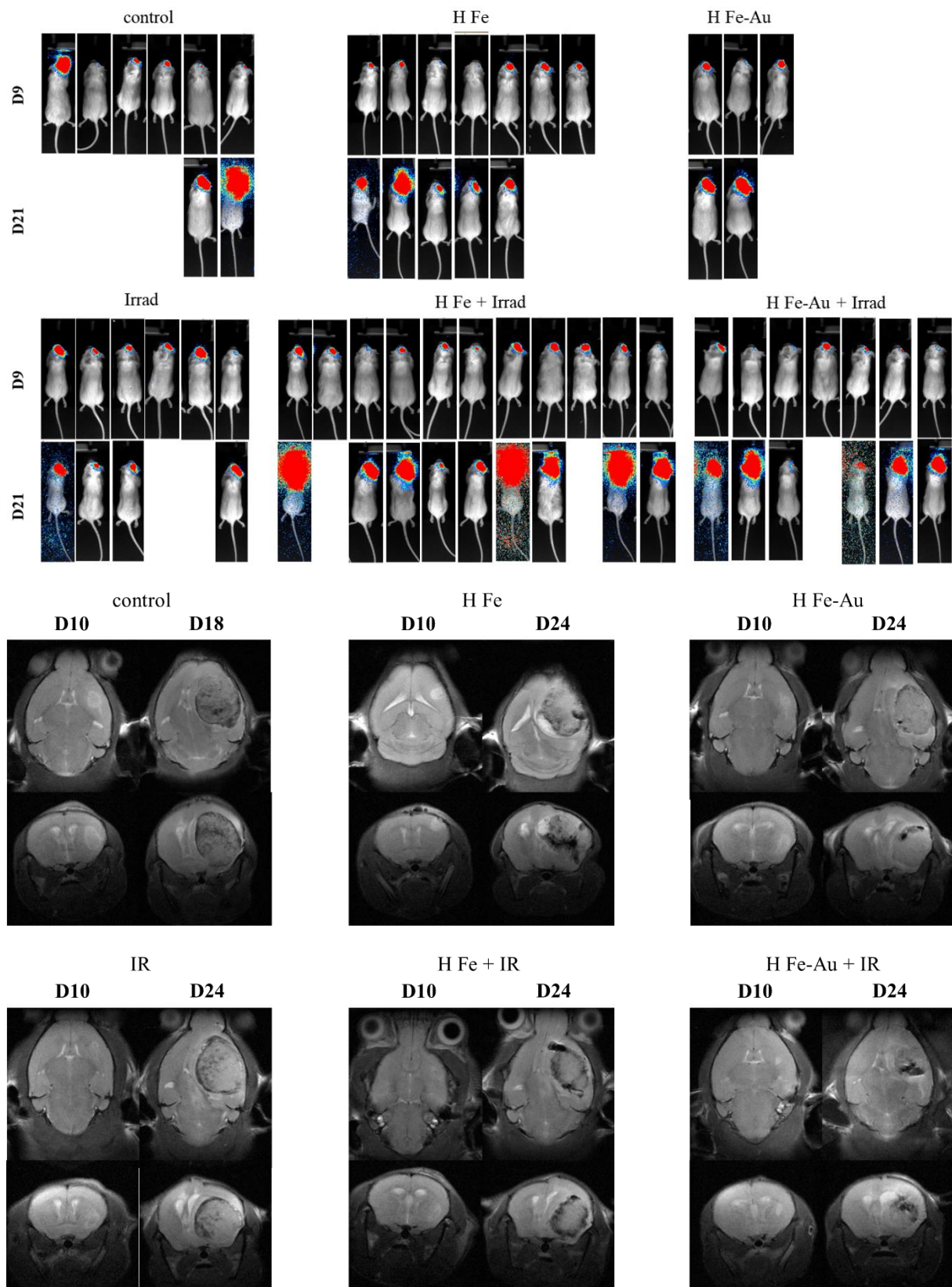


Figure SI- 5 Bioluminescence and MRI follow-up. The hybridosomes® H(Fe) or H(Fe;Au) were intratumorally injected at day 14 or 16 after GL261-Luc+ cells brain implantation. Irradiation started at the time of injection, for 5 days. **(Top panel)** Bioluminescence recording of all albino mice before and after the period of radiotherapy. **(Bottom panel)** Selection of MRI images of mice brain before and after the period of radiotherapy.