



HAL
open science

Thermal plasticity and sensitivity to insecticides in populations of an invasive beetle: Cyfluthrin increases vulnerability to extreme temperature

Julie Engell Dahl, Sapho-Lou Marti, Hervé Colinet, Claudia Wiegand, Martin Holmstrup, David Renault

► To cite this version:

Julie Engell Dahl, Sapho-Lou Marti, Hervé Colinet, Claudia Wiegand, Martin Holmstrup, et al.. Thermal plasticity and sensitivity to insecticides in populations of an invasive beetle: Cyfluthrin increases vulnerability to extreme temperature. *Chemosphere*, 2021, 274, pp.129905. 10.1016/j.chemosphere.2021.129905 . hal-03155982

HAL Id: hal-03155982

<https://univ-rennes.hal.science/hal-03155982>

Submitted on 8 Mar 2021

HAL is a multi-disciplinary open access archive for the deposit and dissemination of scientific research documents, whether they are published or not. The documents may come from teaching and research institutions in France or abroad, or from public or private research centers.

L'archive ouverte pluridisciplinaire **HAL**, est destinée au dépôt et à la diffusion de documents scientifiques de niveau recherche, publiés ou non, émanant des établissements d'enseignement et de recherche français ou étrangers, des laboratoires publics ou privés.

Title:

**Thermal plasticity and sensitivity to insecticides in populations of an invasive beetle:
Cyfluthrin increases vulnerability to extreme temperature**

Julie ENGELL DAHL₁, Sapho-Lou MARTI₁, Hervé COLINET₁, Claudia WIEGAND₁, Martin HOLMSTRUP₂ and David RENAULT_{1,3}

₁Univ Rennes, CNRS, ECOBIO [(Ecosystèmes, biodiversité, évolution)] - UMR 6553, F-35000 Rennes, France

₂University of Aarhus, Department of Bioscience, Section for Terrestrial Ecology, Vejlsovej 25, 8600 Silkeborg, Denmark

₃Institut Universitaire de France, 1 rue Descartes, Paris, France

Corresponding author:

Julie Engell Dahl **Tif:** +45 22 44 74 43

Address:

Univ Rennes, CNRS, ECOBIO [(Ecosystèmes, biodiversité, évolution)]

UMR 6553, F-35000 Rennes

France

E-mail:

julie.bjorge@univ-rennes1.fr

J.E.D. and D.R. designed the experiments, carried out by J.E.D. and S. L. M.. D.R. and M.H. supervised the project. J.E.D. and D.R. derived the models and J.E.D. and S.L.M. analysed the data. H.C. and D.R. assisted with data analysis. J.E.D. and D.R. wrote the manuscript in consultation with all authors. All authors discussed the results and contributed to the final manuscript.

Journal Pre-proof

Abstract

Climate change increases average temperatures and the occurrence of extreme weather events, in turn accentuating the risk of organism exposure to temperature stress. When thermal conditions become stressful, the sensitivity of insects toward insecticides can be exacerbated. Likewise, exposure of insects to insecticides can subsequently influence their ability to handle stressful temperatures. Here, we investigated the effects of constant temperature and daily heat spikes, in presence/absence of insecticide treatment (cyfluthrin), on the condition (impairment of mobility) and thermal tolerance to cold (-6 °C) and heat (42.5 °C) of the terrestrial beetle *Alphitobius diaperinus*. The responses of insects from four populations (three farm-collected populations, one laboratory population) to different durations of extreme temperature exposure were compared. The results showed that the laboratory population was generally more sensitive to extreme cold and heat temperatures, with less than 50% of adults recovering after an exposure at -6 or +42.5 °C for 3h. Significant differences in the level of thermal tolerance were also found among insects from poultry farms. Cyfluthrin exposure incurred detrimental effects to insects' condition in all but one population. For two out of the four populations, mobility impairment was increased when adults were exposed to daily heat spikes (6 hours per day at 38 °C) and cyfluthrin simultaneously, compared to cyfluthrin exposure at constant temperatures; yet, no significant interaction between the two stressors was found. Finally, using one farm collected population, effects of pre-exposure to cyfluthrin on extreme temperature tolerance provided another example of the toxicant-induced climate sensitivity in insects.

1

2 **Thermal plasticity and sensitivity to insecticides in populations of an invasive beetle:**
3 **Cyfluthrin increases vulnerability to extreme temperature**

4

5 Julie ENGELL DAHL¹, Sapho-Lou MARTI¹, Hervé COLINET¹, Claudia WIEGAND¹, Martin HOLMSTRUP²
6 and David RENAULT^{1,3}

7 ¹Univ Rennes, CNRS, ECOBIO [(Ecosystèmes, biodiversité, évolution)] - UMR 6553, F-35000 Rennes,
8 France

9 ²University of Aarhus, Department of Bioscience, Section for Terrestrial Ecology, Vejlsovej 25, 8600
10 Silkeborg, Denmark

11 ³ Institut Universitaire de France, 1 rue Descartes, Paris, France

12

13 **Keywords:**

14 Pesticide, thermal variation, tolerance, heat spike, pyrethroid, insect

15

16 1. Introduction

17 Over the course of their life, all living organisms, including insects, are confronted with a range of
18 environmental conditions which vary spatially and temporally (Hirose and Nakamura 2005; Mann,
19 Bradley, and Hughes 1998; Soranno et al. 2019). In some instances, environmental constraints may
20 be exacerbated by the currently changing climatic conditions. This increases the occurrence of
21 extreme weather events and the probability of organisms' exposure to higher temperatures
22 (Hansen, Sato, and Ruedy 2012; IPCC 2014; Stillman 2019), heightening the risk of organism
23 exposure to heat stress. In turn, several life history traits of individual insects can be affected
24 (Bozinovic et al. 2011; Kingsolver, Diamond, and Buckley 2013; Renault 2011), with cascading effects
25 on population demography and organism evolution (Chown et al. 2010; Colinet et al. 2015; Katz and
26 Brown 1992; Moe et al. 2013). When temperature varies, heat spikes are more likely to occur, and
27 they are expected to have greater evolutionary significance - and pose greater threat to species
28 performance - than increase in average temperature (Katz and Brown 1992; Vasseur et al. 2014).
29 Yet, whatever the nature of the physiological and biochemical mechanisms triggered by thermal
30 stress, their activation may weaken the ability of organisms to deal with other environmental
31 constraints, or conversely magnify these abilities when the responses elicit cross tolerance
32 phenomena (Chen and Stillman 2012; Noyes and Lema 2015; Sinclair et al. 2013). In this context,
33 investigating insects' ability to cope with stress under and after exposure to varying temperature
34 regimes provides useful information about their sensitivity to environmental stress, and for future
35 insights into their geographic distribution (Bozinovic and Pörtner 2015; Buckley et al. 2010; Ma,
36 Hoffmann, and Ma 2015).

37 Besides climatic conditions, adverse environmental effects on insects are also caused by the
38 unintentional spread of man-made contaminants, in particular by the use of various pesticides in
39 agriculture and horticulture (Aviles et al. 2019; Calow 1991; Köhler and Triebkorn 2013). The use of
40 pesticides has become widespread in many regions of the world where agricultural intensity has
41 increased (Tilman et al. 2002), representing a threat to biodiversity in general. While valuable
42 insights of the effects of insecticides on behaviour (Dewer et al. 2016), olfaction (Lalouette et al.
43 2016), reproduction and development (Abbes et al. 2015) have been gathered, these investigations
44 were commonly conducted by exposing the organisms to constant and optimal temperatures, as
45 prescribed in standardized tests (Camp and Buchwalter 2016; Khan and Akram 2014). Yet, the

46 inclusion of daily thermal fluctuations is needed to better simulate the conditions experienced by
47 free-ranging organisms in natural and anthropogenic environments, and thus increase the quality
48 and realism of the outcomes of these investigations (Colinet et al. 2015; Verheyen and Stoks 2019).
49 Moreover, thermal tolerance can vary significantly among insect populations originating from
50 different environments (Engell Dahl et al. 2019; Käfer et al. 2020), as is also the case for pesticide
51 exposure (see Hawkins et al. (2019) for a review of the different mechanisms that may confer
52 different level of insecticide resistance among insect populations). When assessing the effects of
53 environmental stressors on insects' ecology, it has thus become crucial to consider multiple
54 populations (of different exposure or adaptation history) in the experimental designs to get a larger
55 coverage of the range of responses that could be expected at the species level.

56 The possible combined effects of climate change and environmental pollution on organisms, and
57 wildlife in general, have been reviewed by Noyes and Lema (2015). These authors reported that
58 chemical exposure may affect organisms' sensitivity to climate change by disrupting physiological
59 responses to diurnal and seasonal thermal fluctuations. In particular, the alteration of endocrine
60 system functioning and energy balance in toxicant-exposed organisms may subsequently alter their
61 thermal performance curves, potentially challenging their ability to survive thermal stress. In several
62 instances, it has been suggested that the simultaneous exposure to pollutants, including endocrine
63 disrupting chemicals, and climate change could result in synergistic actions (Cairns, Heath, and
64 Parker 1975; Hooper et al. 2013; Laskowski et al. 2010; Moe et al. 2013). When sequential
65 exposures occur, climatic stress can influence sensitivity towards pollutants, and the reverse is also
66 true, e.g. previous exposure to a pollutant can influence the tolerance to climatic stress (Hooper et
67 al. 2013).

68 Nowadays, studies assessing the impacts of multiple stressors, including temperature, are
69 increasingly needed (Kaunisto, Ferguson, and Sinclair 2016; Orr et al. 2020), as such investigations
70 greatly improve our estimates of the effects of interactions among environmental stressors on
71 insects. Holmstrup et al. (2010) reviewed the available studies that assessed the combined effects of
72 pesticide and temperature exposures, and reported only few works that considered daily thermal
73 fluctuations, or daily heat spikes, in their experimental designs. Since this review has been
74 published, the number of studies that combined temperature and toxicant exposures has started to
75 accumulate, reporting how thermal conditions could modify the effects of pesticides on insects (Op

76 de Beeck, Verheyen, and Stoks 2018; Camp and Buchwalter 2016; Delnat et al. 2019; Harwood, You,
77 and Lydy 2009; Verheyen, Delnat, and Stoks 2019; Verheyen and Stoks 2019; Willming, Qin, and
78 Maul 2013). For example, Verheyen and Stoks (2019) found that exposure of damselfly larvae to the
79 organophosphate chlorpyrifos did not affect the survival of individuals maintained at constant 20 °C.
80 Conversely, the mortality of the larvae was increased under daily thermal fluctuations of 5 (17.5-
81 22.5 °C) or 10 °C (15-25 °C). Delnat et al. (2019) reported that daily thermal fluctuations of 7 (16.5-
82 23.5 °C) or 14 °C (13-27 °C) slightly increased the mortality of the larvae of the mosquito *Culex*
83 *pipiens* exposed to chlorpyrifos, while having no effect on adults. Working with heat waves
84 (constant heat exposure of damselfly larvae over three consecutive days), Arambourou and Stoks
85 (2015) reported that the subsequent exposure to chlorpyrifos did not change mortality rates of the
86 larvae. However, the higher inhibition of acetylcholine esterase suggested that heat waves may
87 increase the sensitivity of damselflies to this chemical. More recent studies have examined the
88 effects of successive heat spikes and pesticide exposure (Meng, Delnat, and Stoks 2020), and the
89 delayed effects of pesticide exposures on life histories of insects (Dinh, Janssens, and Stoks 2016).

90 Even though Delnat, Janssens, and Stoks (2019) found the effect of warming on pesticide toxicity to
91 be dependent on other factors of their experimental setup, results from the available literature
92 generally underline the importance of incorporating more realism into the experimental designs
93 when investigating the interaction between pesticide and temperature (Böttger, Schaller, and Mohr
94 2012). Moreover, all but one of these studies used insect larvae, and all investigations were based
95 on aquatic species, meaning that terrestrial insect species and adult life stages are severely
96 underrepresented from this research. Likewise, some studies have investigated the thermal
97 tolerance of insects after they were exposed to pesticides (Op de Beeck, Verheyen, and Stoks 2017,
98 2018; Delnat et al. 2019; Meng, Delnat, and Stoks 2020). Yet again, all of these investigations have
99 focused on aquatic larvae, and used the organophosphate chlorpyrifos. Other chemicals, including
100 pyrethroids, which are also highly toxic to insects (Tang et al. 2017), should be considered. Finally,
101 no study examined the effects of sequential exposure to daily thermal fluctuations and pesticide on
102 the subsequent thermal tolerance in terrestrial insects.

103 In order to contribute to the abovementioned research gaps concerning the interaction of climate
104 and pollutant stress, we aimed at investigating the effects of daily heat spikes and insecticide
105 treatment on the thermal tolerance of adults of the lesser mealworm *Alphitobius diaperinus*

106 (Panzer) (Coleoptera: Tenebrionidae), as well as comparing the performance of populations of *A.*
107 *diaperinus* of different exposure histories to temperature and insecticide. This insect pest,
108 pullulating in poultry farms from many regions worldwide (Geden and Hogsette 1994; Johnson,
109 Gbon, and Boga 2018; Rueda and Axtell 1997), represents a fitting model for research combining
110 ecophysiological and ecotoxicological investigations. Insects can be collected in large numbers from
111 geographically distant and unconnected habitats (poultry farms), making it possible to work with
112 different and locally adapted strains. In these anthropogenic environments, the lesser mealworms
113 are exposed to fluctuating temperatures, as broilers optimize poultry production by running a
114 standardized cycle (which has to be closely followed to maintain profitability (Donald 2010)) of
115 weekly decreasing temperatures, i.e. starting from ≈ 31 and reaching ≈ 17 °C over approximately
116 seven weeks (Salin, Delettre, and Vernon 2003). This provides an excellent habitat for lesser
117 mealworms, that have been found to grow well, i.e. with a very high energy conversion efficiency at
118 23 to 31 °C (Bjørge et al. 2018). Temperature extremes up to 48 °C have also been measured in the
119 litter where *A. diaperinus* thrive (Salin and Vernon 1997), meaning that the insect can be exposed to
120 heat spikes. The poultry houses are disinfected from time to time with chemicals, including the
121 structural type II pyrethroid, cyfluthrin (the use of this insecticide will be banned in France from July
122 21st, 2021 (ANSES 2020)). This insecticide is an inhibitor of insect nerve cell sodium channels, leaving
123 them open and causing paralysis, tremors, and eventually death (Lushchak et al. 2018). It is sprayed
124 at the end of each broiler flock for controlling outbreaks of *A. diaperinus*, and during the disinfection
125 and cleaning of the poultry farm, the heating system is stopped, doors of the building are left
126 opened, and temperature can vary from -5 °C to 31 °C (Salin, Delettre, and Vernon 2003).

127 As a first part of the study, we compared the basal thermal tolerance of *A. diaperinus* from four
128 populations, by measuring their ability to recover from exposure to extreme cold or heat
129 temperatures for different durations. We hypothesized that the beetles' recovery from thermal
130 stress would be faster in populations that experienced temperature fluctuations in their original
131 environment, as previously reported on several other insect models (Arias, Poupin, and Lardies
132 2011; Bozinovic et al. 2011; Cavieres et al. 2019). As a second part of the study, we were interested
133 in comparing the effects of exposure to an environmentally relevant dose of the insecticide
134 cyfluthrin on the condition of insects maintained at constant temperatures or subjected to daily
135 heat spikes. We hypothesized that populations which had experienced frequent pesticide exposure

136 would perform better than laboratory-reared adults (Hamm et al. 2006; Lambkin and Rice 2009).
137 Finally, the population with the highest pesticide tolerance was exposed to different temperature
138 regimes, without pesticide exposure or with different concentrations of cyfluthrin (up to those
139 recommended by commercial formulations). Subsequently, the recovery times of individuals from
140 the different treatments after an exposure to temperature extremes were assessed. Insects pre-
141 exposed to daily heat spikes were expected to recover faster from heat shock, but slower from cold
142 shock treatments, compared to insects kept at constant temperature. Furthermore, insects exposed
143 to insecticides were hypothesized to be characterized by a lower ability to cope with temperature
144 stress, either due to an increased toxicity of the chemical with daily heat spikes or decreased ability
145 to cope with heat shock after chemical stress (Op de Beeck, Verheyen, and Stoks 2017; Delnat et al.
146 2019; Meng, Delnat, and Stoks 2020).

147 **2. Materials and methods**

148 **2.1. Rearing of the insects**

149 Adults of *A. diaperinus* were collected from three poultry farms in Brittany, France, thereafter
150 referred to as FARM1 (sampled at Miniac-sous-Bécherel, 48°17'10" N, 1°55'51" W), FARM2
151 (sampled at Plaine Haute, 48°26'44" N, 2°51'16" W), and FARM3 (sampled at Pommerit-le-Vicomte,
152 48°37'10" N, 3°05'15" W). In addition, larvae of *A. diaperinus* were obtained from Proti-Farm *via*
153 a pet shop (Envies Animales, Saint-Jacques-de-la-Lande, Brittany, France). Insects from this latter
154 population, hereafter referred to as LAB, were reared over many generations under controlled
155 conditions (25 °C, relative humidity 50%, no light) in a supposedly pollutant free environment.
156 Because LAB insects are produced and used as a dietary food supply for pets (e.g. lizards), they are
157 in very good physiological condition (Bjørge et al. 2018).

158 All adults were kept at 25 °C, in darkness, in plastic containers with sawdust for minimum 4 weeks
159 prior to experimental start. They were supplied with water and food *ad libitum*, in the form of water
160 in microtubes with cotton and dry dog food pellets. This procedure allowed standardisation of the
161 temperature, humidity, and trophic conditions experienced by the adults before the assays. The LAB
162 larvae were additionally provided with a block of polystyrene to burrow in for pupation, and oat
163 bran for the first four weeks to further encourage their development into adults (Rice and Lambkin
164 2009). The sex and age of the adults was not considered in our experiments.

165 2.2. Experimental design

166 2.2.1. Characterization of the thermal tolerance of the insects from different populations

167 In order to compare the thermal tolerance of the insects from the four populations, adults were
168 exposed to two extreme temperatures, -6 or +42.5 °C, in a cryothermostat (VWR Collection, AP15R-
169 30). This procedure is derived from protocols commonly used for assessing the thermal tolerance in
170 insects (Hazell et al. 2008; Sinclair, Coello Alvarado, and Ferguson 2015). At -6 and + 42.5 °C, the
171 lesser mealworms are expected to fall into coma (see **Supplementary File 1** for the results of the
172 preliminary tests that allowed us designing the methodology). Each insect was exposed to one of
173 these two extreme temperatures for one of six durations: 15 min, 30 min, 1h, 2h, 3h or 4h, in
174 darkness. This range of stress durations allowed us to describe and compare thermal tolerance
175 among populations. At least four replicates of 10 adults (test tube with rubber cap) were used for
176 each exposure duration and temperature combination. At the end of the thermal treatment (-6 or
177 +42.5 °C), each group of 10 insects was directly transferred into Petri dishes and observed for up to
178 40 seconds every 5 minutes over 2h at room temperature (19 ± 1 °C) (**Supplementary File 2**). During
179 each observation period, the recovery of the insects was scored by registering the individuals as
180 either “Active” or “Impaired/immobile”; insects were characterized as “Active” when they exhibited
181 coordinated movements of all limbs when stimulated, all other states were registered as
182 “Impaired/immobile”. The temperatures, both in the cryothermostat and in the room where
183 recovery observations took place, were monitored using iButtons® (iButtonLink, LLC., Whitewater,
184 USA).

185 2.2.2. Effect of daily heat spikes and cyfluthrin exposure

186 Here, we combined two abiotic stresses by jointly exposing adult *A. diaperinus* to both moderately
187 stressful heat spikes and insecticide for eight days, before assessing any visible impairment or death
188 of exposed individuals. One temperature cabinet was set to constant 26 °C (control temperature),
189 and another cabinet varied the temperature by holding a 6h period at 38 °C, followed by 18h at 26
190 °C (**Supplementary File 2**); the two cabinets were MIR 154 Panasonic programmable incubators. The
191 experiment was run in dark conditions.

192 Insects were placed in glass Petri dishes (10 cm diameter) with a fitting filter paper covering the
193 bottom. For insecticide application, cyfluthrin (pure molecule standard, CAS-number 68359-37-5,

194 Sigma-Aldrich) was dissolved in acetone, and a volume of 2 mL of appropriately diluted solution was
195 transferred to the filter paper. Pre-testing the insects' susceptibility to cyfluthrin led to preparation
196 of two distinct insecticide concentrations, so that the applied dose was 20 mg cyfluthrin/m² for
197 populations FARM1, 2 and 3, and 0.5 mg cyfluthrin/m² for LAB. We had to reduce the cyfluthrin
198 dose significantly for the LAB population, as the 20 mg cyfluthrin / m² concentration killed all adults
199 within a day at our experimental temperatures. These cyfluthrin concentrations induced negligible
200 knockdown (<5%) over prolonged exposures in the works of Desvignes-Labarthe (2018) and Renault
201 and Colinet (Submitted). These concentrations also range in the values that may be encountered by
202 the insects in poultry houses (Salin, Delettre, and Vernon 2003). In the other Petri dishes, 2 mL of
203 pure acetone was added to control for any effect of the solvent. All Petri dishes were left to dry
204 under a fume hood for at least 10 min before the tests, which effectively evaporated all acetone.
205 The exiting literature reveals that cyfluthrin remains efficient over seven days (Guillebeau, All, and
206 Javid 1989), with knockdown effects remaining unchanged when the beetle *Tribolium castaneum*
207 were assessed eight weeks after the chemical was applied (Arthur 1999) Finally, starting from an
208 initial concentration of 17.3 mg / m², (Nakagawa et al. 2017) reported that cyfluthrin concentration
209 decreased by ca. 17% after 56 days. Thus, even if changes in cyfluthrin concentration were not
210 monitored here, it is assumed that it remained close to the nominal concentration.

211 For all treatments, the insects were supplied with a water source (0.5 mL microtube containing
212 water and cotton) and a food source (approx. 0.8 g dog food pellet). For each population, a set of
213 Petri dishes treated with the insecticide and a set of dishes without pesticide treatment were placed
214 in the temperature cabinets (8 to 30 dishes of each, as specified in Table 1) along with an iButton®
215 (iButtonLink, LLC., Whitewater, USA) measuring both temperature and humidity. Each Petri dish in
216 experiments with poultry house collected populations contained 30 individuals, and for the LAB
217 population, each Petri dish contained 20 individuals, due to limited number of individuals (**Table 1**).
218 Previous experiments that examined the sensitivity of *A. diaperinus* to insecticides (including
219 cyfluthrin) revealed that densities from 10 to 30 adults per Petri dish had no effects on the results
220 (Desvignes-Labarthe 2018; Renault and Colinet Submitted).

221

222

223

224 *Table 1 Overview of number of dishes and number of individuals per dish used for assessing the*
 225 *effects of temperature regime (constant temperature or daily heat spikes), with and without the*
 226 *insecticide cyfluthrin, on the locomotory capacities of adult *Alphitobius diaperinus*.*

227

Treatment	Without insecticide		Insecticide-exposed	
<u>Population</u>	<u>Dishes (N)</u>	<u>Animals (N)</u>	<u>Dishes (N)</u>	<u>Animals (N)</u>
FARM1	20	30	20	30
FARM2	21	30	30	30
FARM3	10	30	10	30
LAB	8	20	12	20

228

229

230 After eight days, and 17 hours after the last peak of heat, the state of each individual was noted: the
 231 insects were considered as either “Active” (no apparent effect of the treatment on the locomotory
 232 activities of the insects), “Impaired” (locomotor deficits: difficulties in moving limbs, or laying on
 233 their backs while moving) or “Immobile” (no observable movement).

234 **2.2.3. Effect of daily heat spikes and cyfluthrin exposure on recovery from exposure to extreme** 235 **temperatures**

236 In the third part of the study, we measured the capabilities of adult *A. diaperinus* to recover from
 237 cold or heat shocks after they had been exposed to insecticide and/or daily heat spikes for eight
 238 days. As a non-negligible part of the adults from LAB, FARM2 and FARM3 were impaired or
 239 immobile after they were exposed to cyfluthrin concentration of 20 mg / m² (see the results
 240 presented in Figure 3), we had to focus on adults from FARM1 for this experiment. Lesser
 241 mealworms from this population survive exposure to cyfluthrin concentrations encountered in the
 242 field (as recommended applications contain 20 mg cyfluthrin/m², C. Salin et al., 2003), which thus
 243 allowed working with this concentration without incurring selection of individuals due to mortality
 244 or locomotor deficits during the pre-exposure period.

245 For this experiment, three temperature conditions were used: (i) constant 26 °C for eight days
 246 (control), 18h at 26 °C daily interrupted by exposures of 6h at (ii) 32 °C (low heat spike), or (iii) 38 °C
 247 (high heat spike). The exposure ran over eight days in darkness. Glass Petri dishes were prepared
 248 with four doses of cyfluthrin (0, 5, 10 or 20 mg cyfluthrin/m²) as described above, including addition
 249 of food and water. Then, 30 adults from FARM1 were added to each dish, and dishes of every
 250 pesticide dose were placed into each of the three temperature cabinets (MIR 154 Panasonic

251 Incubators), resulting in a total of four different pesticide exposures at three different temperature
252 regimes.

253 After eight days, and 17 hours after the last peak of heat, the Petri dishes were removed from the
254 temperature cabinets, and the beetles were directly exposed to either -6 or +42.5 °C for 2h, in
255 darkness (**Supplementary File 2**). Extreme temperature exposure was performed as described
256 above (section 2.2.1.), including testing the recovery of at least 40 individuals to each combination
257 of treatment (temperature regime, insecticide dose, and temperature regime x insecticide dose),
258 but the temperature of the recovery room was higher (approx. 24 °C instead of 20 °C).

259 **2.3. Data treatment**

260 The recovery time of every single individual was used to compute the temporal recovery curves
261 using Kaplan Meier estimates computed in R version 3.5.2, using the Survminer package
262 (Kassambara and Kosinski 2018; R Core Team 2013). The probability of recovery at any given time
263 point therefore represents the proportion of individuals that have recovered by that time. Pairwise
264 comparisons using Log-Rank test with adjusted P-values (Benjamini and Hochberg 1995) were
265 performed *post-hoc*, with a significance value of 0.05. Generalized linear models (GLMs) with logit
266 link function for proportions outcome (i.e. number of active versus impaired or immobile individuals
267 per dish) were run on data reporting the state of animals after eight days of exposure to the
268 different temperature regimes and pesticide doses. The effect of each variable (temperature, and
269 insecticide dose), and their interactions, were analysed using the analysis of deviance (Anova
270 function in the car package (Fox and Weisberg 2019)). We assume that this insecticide and heat
271 peaks have different modes of actions, meaning that their individual- and interaction effects on *A.*
272 *diaperinus* adults are assumed to be multiplicative. Differences among the treatments were finally
273 analysed by Sidak's multiple comparisons using the emmeans and multcompView packages (Graves,
274 Piepho, and Selzer 2019; Lenth 2020), with a significance value of 0.05.

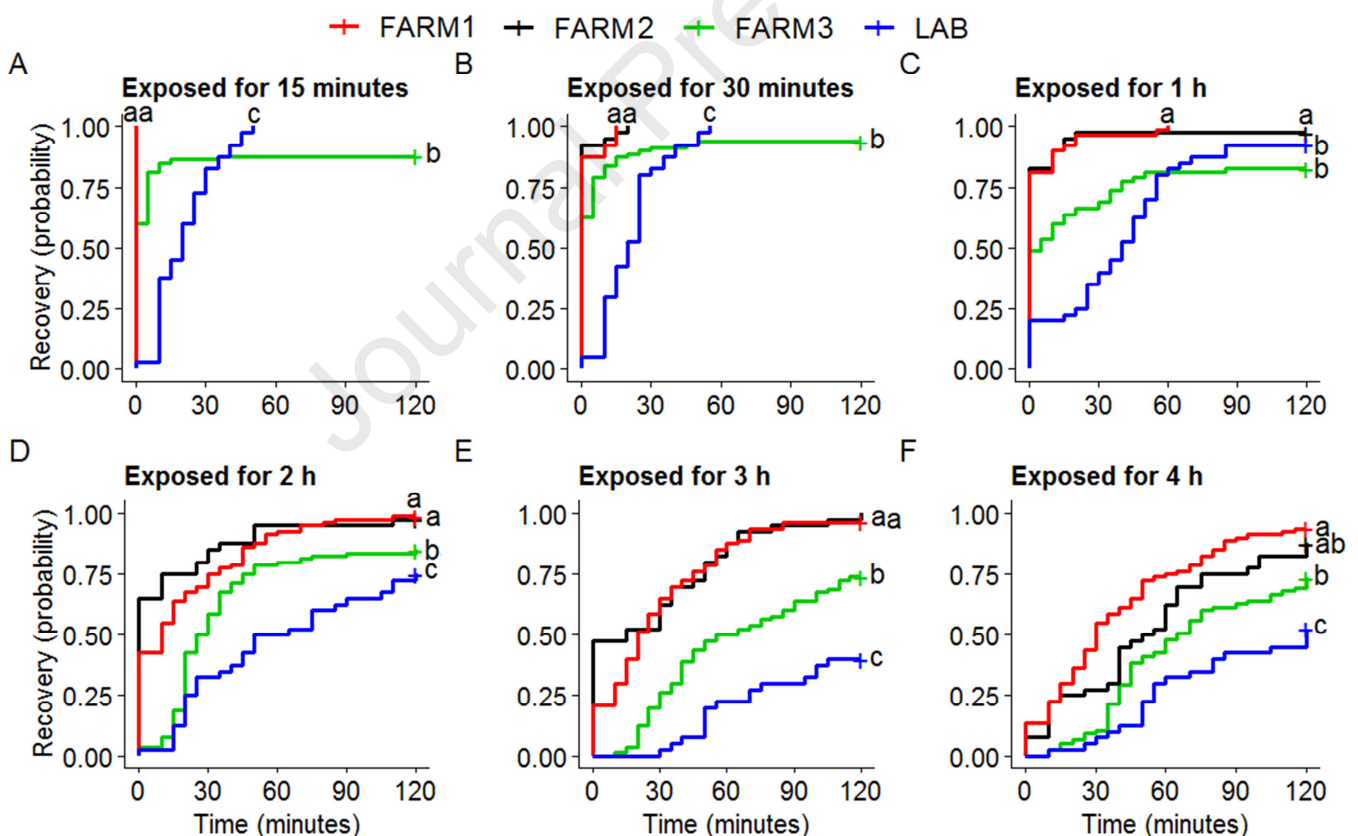
275 **3. Results**

276 **3.1. Characterization of the thermal tolerance of the insects from different populations**

277 The recovery probability over time of adult *A. diaperinus* was dependent on the exposure duration
278 to hot or cold temperature extremes (**Figures 1 and 2; Supplementary File 3**). Adults from LAB

279 recovered more slowly than adults from the poultry house-collected populations for all durations of
 280 exposure at 42.5 °C ($P \leq 0.05$), and all but 30 minutes exposure at -6 °C ($P \leq 0.05$) (**Supplementary**
 281 **File 3**). After a 30 min exposure at -6 °C, the recovery from LAB was comparable to that measured
 282 from the three other populations ($P \geq 0.05$); after 1 hour exposure at 42.5 °C, the recovery curve of
 283 LAB was also similar to FARM3 ($P = 0.33$). When the duration of exposure to heat or cold
 284 temperatures was increased, the proportion of insects that fully recovered was decreased and the
 285 duration of recovery was prolonged (**Figures 1 and 2**).

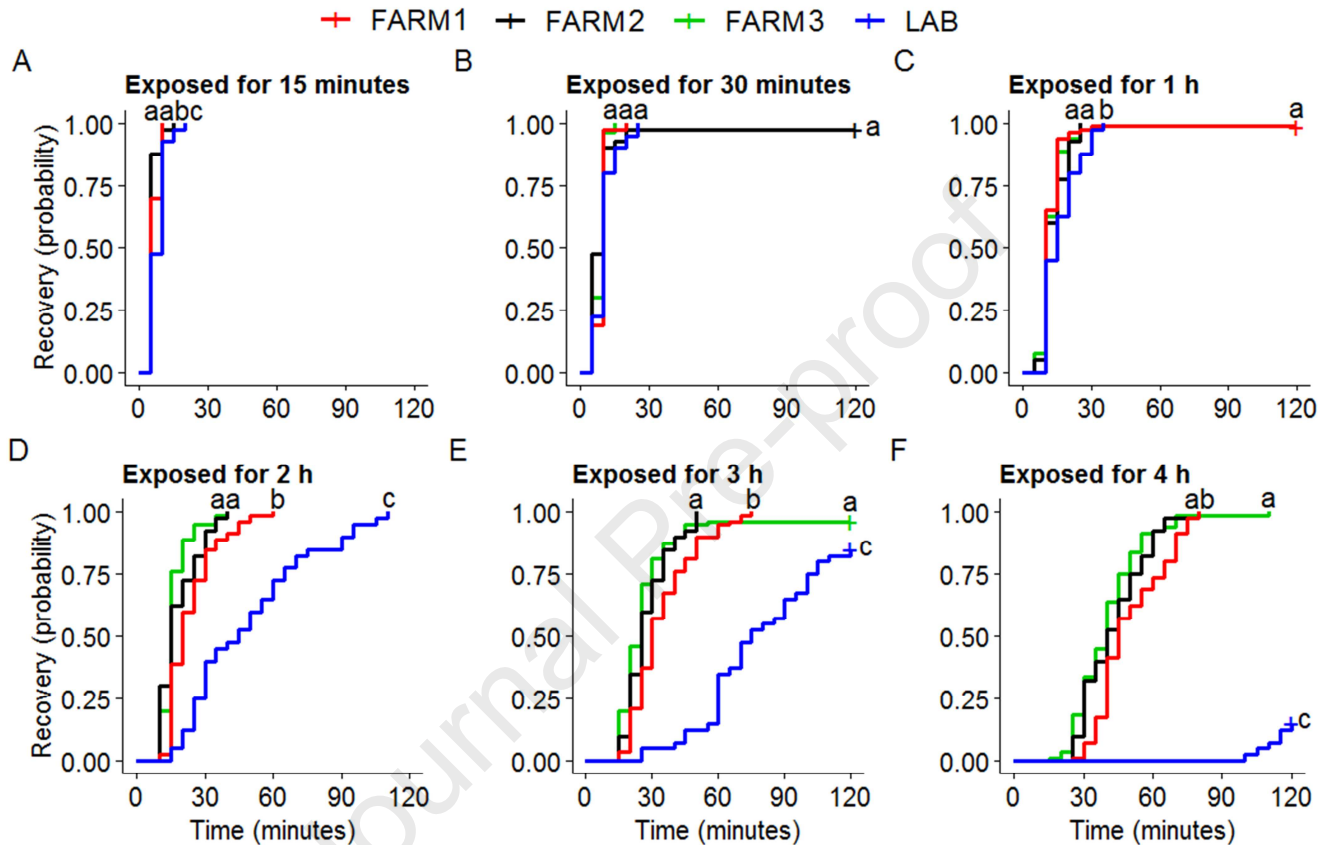
286 The recovery probability of the lesser mealworms from FARM1 and FARM2 after they were exposed
 287 to heat (42.5 °C) was similar for all experimental conditions. When exposed to temperature
 288 extremes for 0.25, 0.5, 1, 2, or 3h, insects from FARM3 were characterised by a lower recovery
 289 probability as compared with the two other poultry house-collected populations (Figure 1).



290
 291 **Figure 1.** Recovery probability of individuals from four different populations of *A. diaperinus*
 292 exposed at 42.5 °C for six different durations: **A)** 0.25 hour (overall $P < 0.001$); **B)** 0.5 hour (overall P
 293 < 0.001); **C)** 1 hour (overall $P < 0.001$); **D)** 2 hours (overall $P < 0.001$); **E)** 3 hours (overall $P < 0.001$); **F)**

294 4 hours (overall $P < 0.001$). The red lines represent insects from FARM1, the black lines represent
 295 the insects from FARM2, the green lines represent the insects from FARM3, and the blue lines
 296 represent the insects from LAB. Different letters indicate differences among the recovery probability
 297 curves within each duration.

298



299

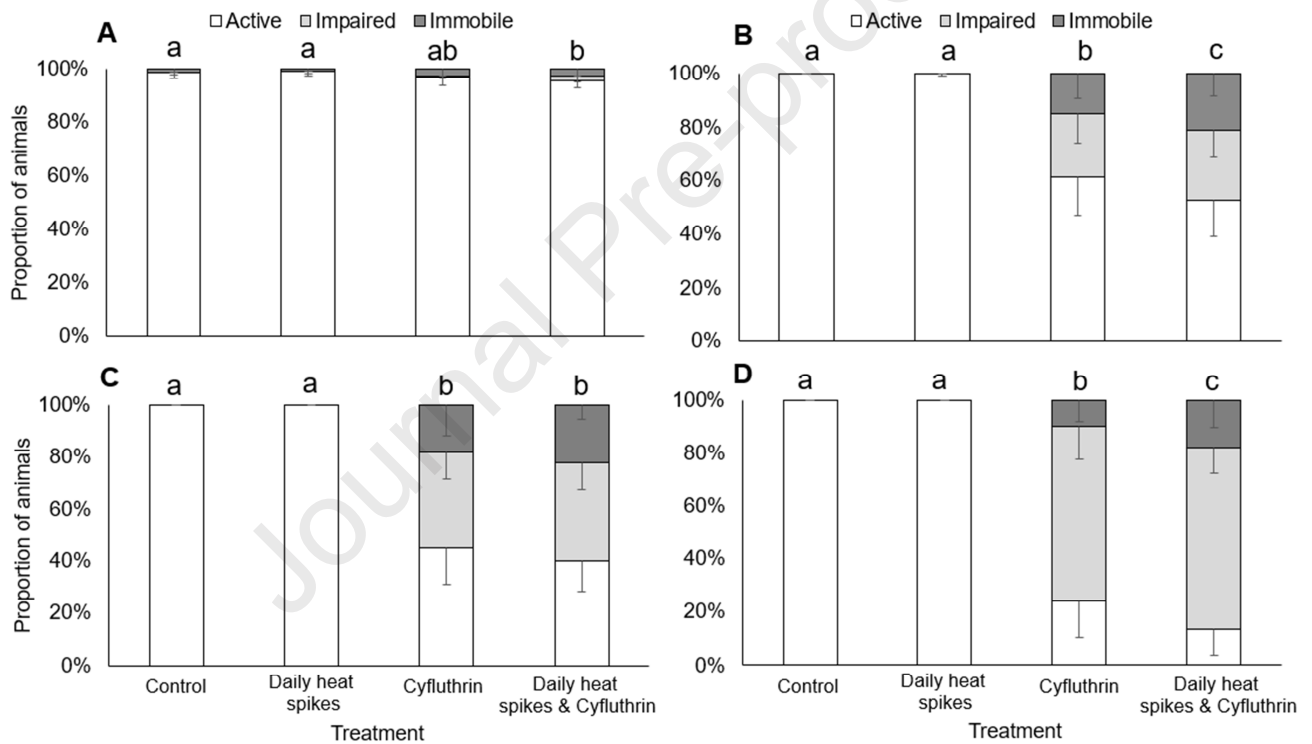
300 **Figure 2.** Recovery probability of individuals from four different populations of *A. diaperinus*
 301 exposed at -6°C for six different durations: **A)** 0.25 hour (overall $P < 0.001$); **B)** 0.5 hour ($P = 0.074$);
 302 **C)** 1 hour (overall $P < 0.01$); **D)** 2 hours (overall $P < 0.001$); **E)** 3 hours (overall $P < 0.001$); **F)** 4 hours
 303 (overall $P < 0.001$). The red lines represent insects from FARM1, the black lines represent the insects
 304 from FARM2, the green lines represent the insects from FARM3, and the blue lines represent the
 305 insects from LAB. Different letters indicate differences among the recovery probability curves within
 306 each exposure duration.

307

308 3.2. Effect of daily heat spikes and cyfluthrin exposure

309 The number of active lesser mealworms was significantly reduced when insects were exposed to
 310 cyfluthrin at constant temperature (26°C) as compared with control insects ($P < 0.05$ (95%
 311 confidence level)) for all populations (Figure 3), except for FARM1 (Figure 3, A; Supplementary File

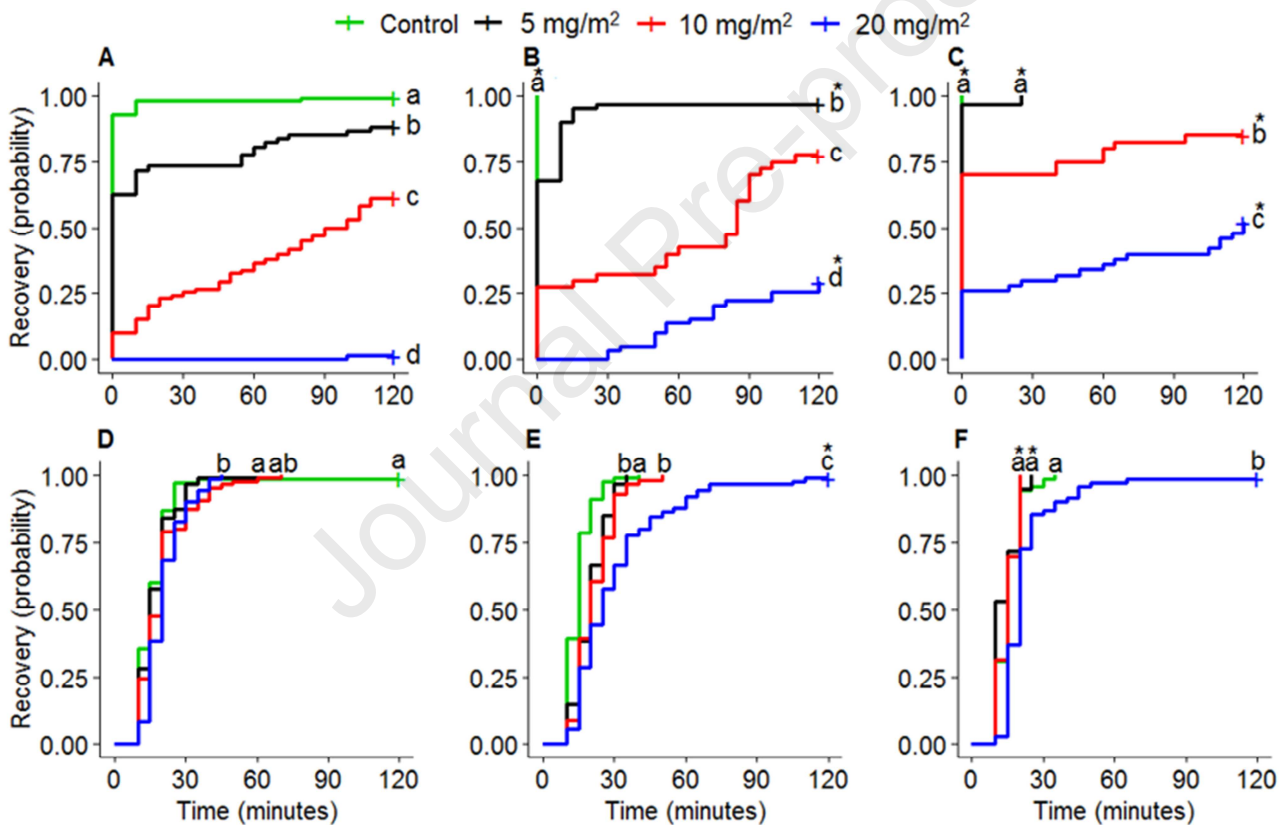
312 **3)** Sidak's multiple comparisons *post-hoc* tests following a two-way ANOVA showed that the
 313 insecticide cyfluthrin and daily heat spikes (18h at 26 °C followed by 6h period at 38 °C for 8 days)
 314 significantly decreased the proportion of active insects as compared with control and heat
 315 treatment conditions ($P < 0.05$) for all populations (**Figure 3A-D; Supplementary File 3**). Yet, the
 316 proportion of insects that were scored as active remained close to 100% for FARM1. The proportion
 317 of insects scored as active significantly differed among the "Cyfluthrin" and "Daily heat spikes &
 318 Cyfluthrin" treatments for FARM2 ($P < 0.05$) and LAB ($P < 0.05$). There was no significant interaction
 319 between daily heat spikes and cyfluthrin for any of the populations ($P = 0.28$ or higher) (**Figure 3, A-**
 320 **D; Supplementary File 3**).



321
 322 **Figure 3.** Status of adult *A. diaperinus* from populations **A)** FARM1, **B)** FARM2, **C)** FARM3 after they
 323 were exposed for eight days to control conditions (constant 26 °C), daily heat spikes (26 °C for 18h,
 324 38 °C for 6h), cyfluthrin (20 mg/m²) or daily heat spikes and cyfluthrin and **D)** LAB after eight days of
 325 same exposure treatments, but with a cyfluthrin concentration of 0.5 mg/m². Different letters
 326 indicate differences among the number of active insects within each population.

327
 328 **3.3. Effect of daily heat spikes and cyfluthrin exposure on recovery from exposure to extreme**
 329 **temperatures**

330 The recovery probability of adult *A. diaperinus* from FARM1 decreased with increasing doses of
 331 cyfluthrin after the insects were maintained for eight days under different temperature regimes and
 332 cyfluthrin concentrations prior to extreme temperature exposure ($P < 0.001$) (**Figure 4**;
 333 **Supplementary File 3**). This was particularly evident for beetles exposed to heat ($42.5\text{ }^{\circ}\text{C}$) (**Figure 4**).
 334 Pre-exposure to a daily heat spike for eight days (**Figure 4, B-C**) accelerated the recovery of the
 335 insects after they were exposed at $42.5\text{ }^{\circ}\text{C}$ for 2h, as compared with animals exposed at constant 26
 336 $^{\circ}\text{C}$ (**Figure 4, A**; **Supplementary File 3**). Conversely, the recovery curves remained comparable for
 337 insects that were exposed to extreme cold ($-6\text{ }^{\circ}\text{C}$ for 2h; **Figure 4, D-F**), even though they were
 338 previously subjected to different heat spikes for 8 days.



340 **Figure 4.** Recovery probability of *A. diaperinus* from FARM1 observed every 5 minutes after a 2-hour
 341 exposure at $42.5\text{ }^{\circ}\text{C}$ (A, B and C) or $-6\text{ }^{\circ}\text{C}$ (D, E and F). Before the test, the insects were exposed to
 342 different temperature regimes: (A) and (D) constant $26\text{ }^{\circ}\text{C}$; (B) and (E) $26\text{ }^{\circ}\text{C}$ daily interrupted by 6h
 343 at $32\text{ }^{\circ}\text{C}$; (C) and (F) $26\text{ }^{\circ}\text{C}$ daily interrupted by 6h at $38\text{ }^{\circ}\text{C}$. For each temperature regime, the insects
 344 were exposed to four different concentrations of the insecticide cyfluthrin: 0 (control), 5 (black
 345 lines), 10 (red lines) or 20 (blue lines) mg cyfluthrin/ m^2 . Stars (*) represent significant differences
 346 between the marked curve and the curve of the same colour drawn in Fig. 4A (constant temperature

347 regime used as the reference recovery probability). Different letters indicate differences among the
348 recovery probability curves within each temperature pre-treatment group.

349

350 **4. Discussion**

351 **4.1 Characterization of the thermal tolerance of the insects from different populations**

352 In this study, we were interested in comparing the basal thermal tolerance of adult *A. diaperinus*
353 from four populations through assessments of their ability to recover from different durations of
354 exposure to cold or heat. Adults from FARM1 and FARM2 were characterized by the greatest ability
355 to recover from thermal stress, in particular to heat exposure, while laboratory-reared adults
356 exhibited the lowest thermal tolerance, in line with our expectations. The thermal plasticity of lesser
357 mealworm populations is also consistent with the wide range of temperatures that can occur during
358 a poultry house production cycle. Acclimation or adaptation to thermally variable habitats may
359 widen the temperature tolerance range, as reported from other insect models (reviewed in Colinet
360 et al. 2015; Lachenicht et al. 2010). For instance, working with *Drosophila melanogaster* reared at
361 varying temperature regimes, Bozinovic et al. (2011) observed a reduction of the number of flies
362 entering into chill or heat coma when transferred to extreme temperatures, as compared with flies
363 reared at constant temperature. Overgaard, Hoffmann, and Kristensen (2011) evidenced that
364 acclimation of *D. melanogaster* to variable temperatures increased tolerance to both low and high
365 thermal stress. In addition, these authors showed that populations originating from temperate areas
366 exhibited a wider thermal tolerance than those sampled from more thermally stable tropical
367 environments. In sum, the lower thermal tolerance of adult *A. diaperinus* from LAB is consistent
368 with the available literature, and the hypothesis that poultry house-collected insects have higher
369 recovery probabilities than laboratory-bred individuals was confirmed.

370 In this work, insects from FARM3 exhibited a significantly lower thermal tolerance than their
371 counterparts sampled from the other two poultry farms. However, many other environmental
372 factors experienced by the insects in the poultry farm, such as pH and ammonia concentration in the
373 litter, or the presence and diversity of bacteria and viruses which trigger immune responses that can
374 alter the performance of other physiological traits, may have shaped the thermal tolerance of the
375 insects from poultry farms. Further, we can also expect the populations to be genetically distinct

376 from each other. As a result, variance in thermal tolerance among the insects from the three farm
377 populations is not surprising (Miller, Mohrenweiser, and Bell 2001).

378 **4.2. Effect of daily heat spikes and cyfluthrin exposure**

379 The previous experiment reported differences in the thermal tolerance among populations of *A.*
380 *diaperinus*. In particular, insects from FARM1 and FARM2 exhibited slightly higher capacity to
381 recover from heat exposure, suggesting that they would be better able to cope with daily heat
382 spikes, while insects from the LAB population should have had the lowest ability to deal with peaks
383 of heat. Yet, none of the populations were visibly affected by the daily heat spikes on their own.

384 Insects from FARM1 were capable of coping with the investigated dose of cyfluthrin at constant
385 temperature, while this condition was detrimental for the three other populations. As expected,
386 adults of *A. diaperinus* from LAB were more sensitive to the insecticide than those of the three
387 FARM populations. Differences in cyfluthrin resistance have already been reported in *A. diaperinus*
388 populations from Australia (Lambkin and Rice 2009), where resistance was generally related to the
389 extent and frequency of cyfluthrin applications experienced by the insects. Similarly, Chernaki-Leffer
390 et al. (2011) found strains of *A. diaperinus* of different pesticide (cypermethrin, dichlorvos and
391 triflumuron) susceptibility in Brazil, and Hamm et al. (2006) found strains of *A. diaperinus* with
392 different pesticide (cyfluthrin and tetrachlorvinphos) resistance in the United States. The latter
393 authors suggested that resistance alleles are present in the resistant populations of the lesser
394 mealworm, as may have been the case with our poultry house collected insects.

395 While daily heat spikes alone did not affect the recovery of the insects of the four tested
396 populations, the combination of insecticide and daily heat spikes significantly reduced the number
397 of active individuals in two (FARM2 and LAB) out of the four assayed populations. Warm
398 temperatures have been found to decrease the toxicity of the pyrethroids cypermethrin and
399 deltamethrin in the fly *Musca domestica* (Khan and Akram 2014), and in the Spotted bollworms
400 *Earias vittella* exposed to pyrethroids at higher temperature regimes (Satpute et al. 2007). Yet, these
401 authors used constant temperatures in their experiments. The increased negative effects of the
402 insecticide for adult *A. diaperinus* experiencing a daily heat spike of 6 hours is consistent with the
403 findings of several other studies (Delnat et al. 2019; Willming, Qin, and Maul 2013; Zhu, Sengonca,
404 and Liu 2006), who found increasing pesticide toxicity in insects subjected to daily bouts of high

405 temperatures. For instance, daily thermal fluctuations as low as 5 °C increased toxicity of
406 chlorpyrifos in damselfly larvae (Verheyen and Stoks 2019). The synergistic effects of thermal
407 variations and insecticides may occur under large thermal variations only, as reported in the vector
408 mosquitoes *Culex pipiens* (Delnat et al. 2019). The magnification of the effects of pyrethroids on *A.*
409 *diaperinus* we have found emphasizes the importance of considering daily thermal variations and
410 heat spikes in risk assessments of the sensitivity of biodiversity to pollution under different
411 scenarios of climate change, although a higher constant temperature equivalent of the average
412 temperature experienced by animals exposed to daily heat peaks would allow us to make stronger
413 conclusions on this point. At higher temperatures, pesticide uptake may be increased, as found by
414 Lydy, Belden, and Ternes (1999) and Buchwalter, Jenkins, and Curtis (2003). In parallel, elimination
415 rates of the toxicants, for example through temperature-dependent activation of enzymes, should
416 also be enhanced at warmer conditions. In sum, the available literature and our results could
417 indicate a promotion of insecticide resistant genotypes with increasing occurrence of extreme
418 weather events, which is consistent with documented links between climatic variables and evolution
419 of pesticide resistance in arthropod pests (Maino, Umina, and Hoffmann 2018). Facilitation of
420 insecticide resistance as a result of climate change could be a result of pleiotropy, shared genetic
421 mechanisms or genetic linkage (Pu, Wang, and Chung 2020).

422 **4.3. Effect of daily heat spikes and cyfluthrin exposure on recovery from exposure to extreme** 423 **temperatures**

424 Using adult *A. diaperinus* from FARM1, we tested how the sensitivity to extreme temperatures was
425 affected by thermal and insecticide pre-treatments. We expected higher proportion of recovery and
426 faster recovery from heat stress in insects exposed to a daily heat spike over eight consecutive days,
427 as extreme temperature tolerance is readily modified by a thermal conditioning processes, even in
428 the short-term (Chidawanyika and Terblanche 2010; Kingsolver et al. 2016; Weldon, Terblanche, and
429 Chown 2011). Our results are consistent with this expectation for heat-shocked insects. Daily peaks
430 at high temperatures may have acclimated the insects to heat, which does not necessarily prepare
431 them for cold exposures. Indeed, cold tolerance requires different mechanisms compared to heat
432 tolerance, by for instance increasing membrane fluidity instead of decreasing it (Neven 2000; Teets
433 and Denlinger 2013). This can explain why heat pre-exposures did not consistently affect cold
434 tolerance in this experiment. Similarly, it has been shown that acclimation to low temperature

435 increased cold tolerance, but did not affect heat tolerance in *Drosophila melanogaster* (Overgaard
436 et al. 2007).

437 For insects exposed to extreme heat, insecticide pre-treatment significantly reduced recovery
438 probability, both by generally increasing the recovery time and the number of beetles that did not
439 recover within the recovery period. In fact, beetles pre-exposed to the sublethal dose of 20 mg/m²
440 at control temperature never recovered from the applied sublethal heat exposure. We also
441 observed that even a relatively low exposure dose (5 mg cyfluthrin/m²) had a significant effect on
442 the recovery probability of the individuals, thus providing supporting evidence for toxicant-induced
443 climate sensitivity (Hooper et al. 2013; Moe et al. 2013) in adult *A. diaperinus*. Several studies have
444 shown that an increase in temperature generally enhances negative effects of contaminants (Noyes
445 et al. 2009; Noyes and Lema 2015), but the number of studies that have tested the effects of
446 insecticide pre-treatments is rather limited as compared with investigations assessing the effects of
447 simultaneous exposures. Importantly, when working sequentially, i.e. by applying one stress before
448 the other, results can greatly vary depending on the specific chemical investigated (Matzrafi 2019).
449 Here, we can hypothesize that coma, which is related to nerve dysfunction, through decreased
450 membrane potential and reduced excitability of the neuromuscular system, occurs more quickly and
451 severely during heat treatment after cyfluthrin exposure, as cyfluthrin is an inhibitor of nerve cell
452 sodium channels. Meanwhile, further research is required to reveal the mechanistic processes
453 explaining the recovery patterns we observed here. For the insects exposed to extreme cold, the
454 effect was only observable after exposure to a dose that is close to the one recommended for use of
455 the insecticide in commercial products (20 mg cyfluthrin/ m²). A previous study did not find an effect
456 of pesticide exposure on freeze tolerance in an earthworm (Bindesbøl et al. 2009), which indicates
457 that cold tolerance is not as sensitive to insecticide exposure as heat exposure.

458 Our results also fit well with effects of pesticide exposure on temperature tolerance found in other
459 studies. For example, Op de Beeck, Verheyen, and Stoks (2017, 2018) found that damselfly larvae
460 that were sensitive to the pesticide chlorpyrifos also showed a reduction in heat tolerance after
461 exposure to the pesticide. The authors also showed that the reduction in heat tolerance was smaller
462 when the animals had been pre exposed to higher temperatures, a finding that is in line with our
463 study. In addition, Delnat et al. (2019) found that pesticide exposure decreased temperature
464 tolerance in mosquito larvae and males, and Meng, Delnat, and Stoks (2020) showed that pesticide

465 exposure prior to experiencing a heat spike reduced heat tolerance of mosquito larvae. This
466 reduction in temperature tolerance following pesticide exposure is also true for other taxa, as
467 critical thermal maximum was also reduced in fishes after exposure to endosulfan and chlorpyrifos
468 (Heath et al. 1994; Patra et al. 2007).

469 The effect of fluctuating temperature regime was also observable in animals who had been exposed
470 to insecticide prior to extreme temperature treatment. It is however difficult to determine whether
471 the observed increase in thermal tolerance after varying temperature regimes was caused by
472 increased tolerance to extreme heat, to insecticide exposure or a combination of the two (Oliver
473 and Brooke 2017). Further research into pesticide uptake and elimination in the animals in the
474 course of this experimental setup would be of interest to further elucidate the processes behind the
475 observed effect.

476 **5. Conclusion**

477 The present work reports that populations of the lesser mealworms have distinct abilities to recover
478 from thermal and insecticide stress, and their interactions. This finding emphasises the importance
479 of designing experiments including several populations when making assessments of the sensitivity
480 of a given species to environmental factors, and more particularly when these data nourish models
481 aiming at forecasting the future of biodiversity. No synergistic interaction was found when the lesser
482 mealworms were jointly subjected to daily heat spikes and cyfluthrin; yet, this type of experimental
483 procedure, which simulates the conditions that could be experienced by free-ranging organisms in
484 natural and anthropogenic environments, increase the ecological realism of the study. This is even
485 truer in a global warming context, as daily heat spikes are expected to become more frequent in
486 several habitats. Here, we also found the importance of working with field-collected insects. The
487 thermal tolerance and sensitivity to insecticide of the laboratory population was very different than
488 that of the field specimens, meaning that different conclusions would be drawn if working with the
489 former population only. Finally, and in line with earlier investigations, our study pointed out the
490 importance of considering the effects of multiple stressors, and the lasting effects they can have on
491 other traits of the insects.

492

493 **Acknowledgements**

494 We would like to thank Guillaume Weecxsteen, Héloïse Moullec and Baptiste Vasseur for their
495 contribution in collecting data for this study. We also thank Maxime Dahirel, Mathias Holmstrup and
496 Stine Slotsbo for interesting discussions on this work. This study was supported by France-Agri-Mer
497 (Research grant 'Teneblimit'), and by the International Research Project (IRP) 'Phenomic responses
498 of invertebrates to changing environments and multiple stress (PRICES) funded by InEE-CNRS.

499

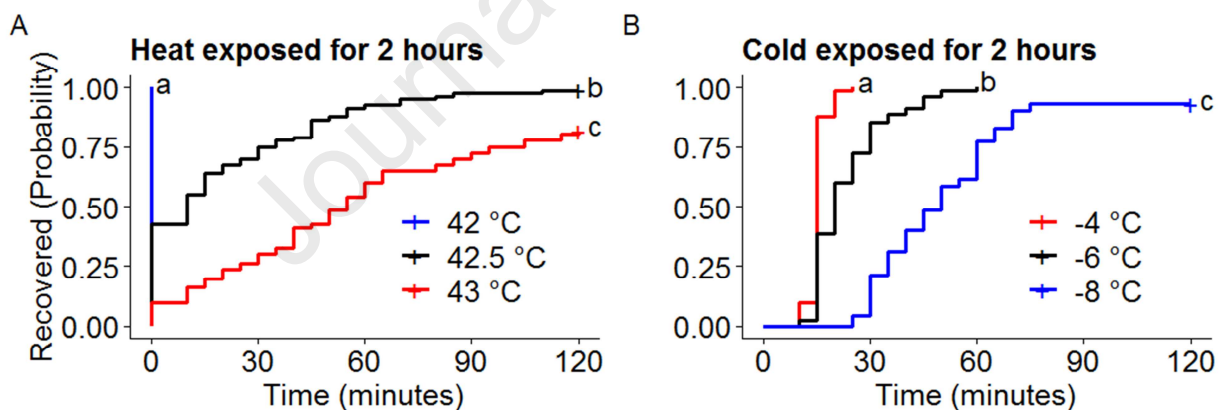
500 **Supplementary File 1**

501 To begin this study, we had to test the effects of different temperatures on the recovery capacity of
502 adult *Alphitobius diaperinus*, that is, the effects of exposure to extreme temperatures (cold, heat) on
503 the recovery ability and duration of the individuals.

504 Insects from the population FARM1 were used to describe the general temperature tolerance of the
505 species, and to find temperature exposures that would cause the adults to enter chill coma, yet
506 keeping the ability to recover (capacity to regain full movement) afterwards. Four to eight replicates
507 of 10 individuals in each container (test tube with rubber cap) were created for each exposure
508 temperature, starting at -4 °C for cold exposure, and at +42 °C for heat. At the end of the thermal
509 treatment, the insects were directly transferred to Petri dishes and observed every 5 minutes for 2h.
510 Each observation period lasted for up to 40 seconds, and individuals were registered as either
511 "Immobile, Impaired" or "Recovered". Animals were characterized as "Recovered" when they had
512 regained the ability to move normally. The temperature both in the cryothermostat and the room
513 where recovery observations took place was monitored using iButtons® (iButtonLink, LLC.,
514 Whitewater, USA).

515 Since thermal performance curves are often steep at high temperature extremes, and change less
 516 quickly at cold temperature extremes (Huey and Stevenson 1979; Sinclair et al. 2016), we used small
 517 increments of temperature in the heat exposure experiments (0.5 °C) and larger increments (2 °C)
 518 for cold exposure. When having run three temperatures for a duration of 2 hours, we were able to
 519 see the temperatures that would best describe the effects of different durations of exposure on the
 520 thermal tolerance of adult *A. diaperinus* from different populations. These experimental conditions
 521 were also used for comparing the effects of different daily heat spikes and insecticide exposures
 522 prior to extreme temperature exposure.

523 In Appendix Figure 1, we see that the insects recovered very quickly from the least extreme
 524 investigated temperatures; exposure to +42 °C did not even elicit heat coma from which the animals
 525 could recover. Furthermore, the animals showed a low ability to recover from the most extreme
 526 temperatures used: after an exposure to +43 °C, many insects were not able to recover within the
 527 recovery period (Appendix Figure 1, A), and after 2 hours at -8 °C it took around 45 minutes before
 528 half of the individuals had recovered (Appendix Figure 1, B).



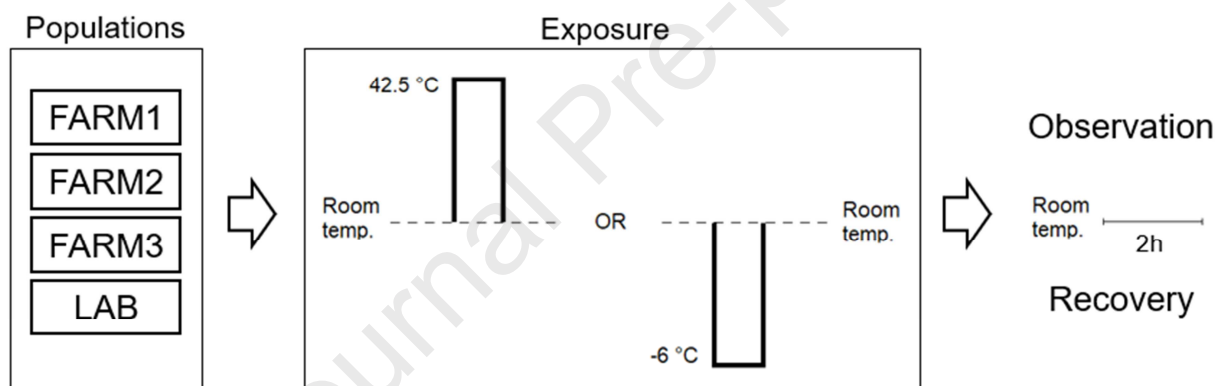
529 Appendix Figure 1 illustrates the recovery time of adult *Alphitobius diaperinus* from FARM1 after
 530 exposure to different extreme temperatures (represented by different coloured lines) for 2 hours. A)
 531 Recovery curve of individuals exposed to extremely warm temperatures (42 to 43 °C) (overall $P < 0.001$). B) Recovery trajectory of individuals exposed to extremely cold (-4 to -8 °C) temperatures
 532 (overall $P < 0.001$).
 533
 534

535 From these results, it can be concluded that adults of *A. diaperinus* have an extreme temperature
 536 tolerance that is within the range that commonly characterizes insects (Addo-Bediako, Chown, and

537 Gaston 2000). We also see that the changes in recovery time with changing temperature follows a
 538 pattern typical from thermal performance curves (Colinet et al. 2015; Huey and Stevenson 1979).
 539 Specifically, great changes in thermal tolerance happens across a narrower temperature range at
 540 extreme heat (here between 42 and 43 °C) compared to extreme cold (here -4 to -8 °C). We also
 541 note that adults of *A. diaperinus* were stressed (went into chill coma), but all individuals recovered
 542 from sudden exposure at 42.5 °C and -6 °C. Therefore, these conditions represent suitable
 543 temperatures for comparing differences in recovery time among populations or treatment groups.

544

545

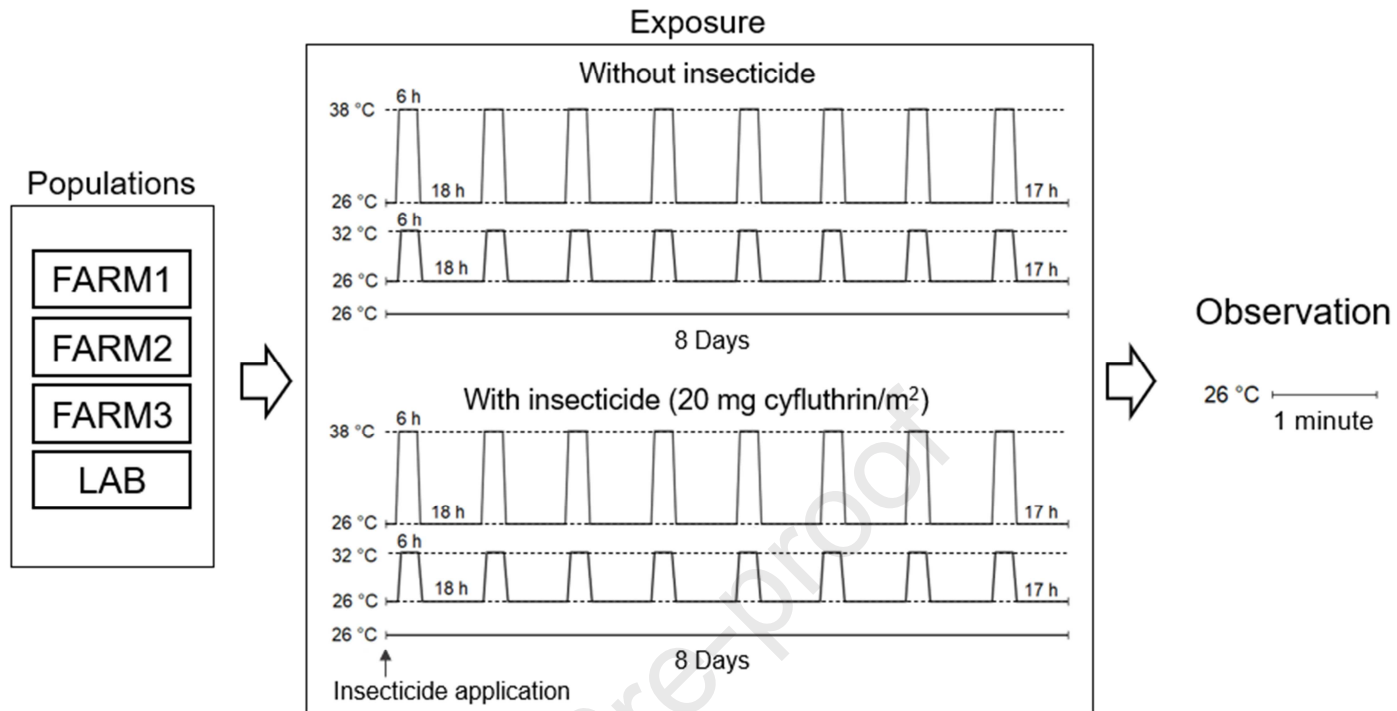
546 **Supplementary File 2**

547

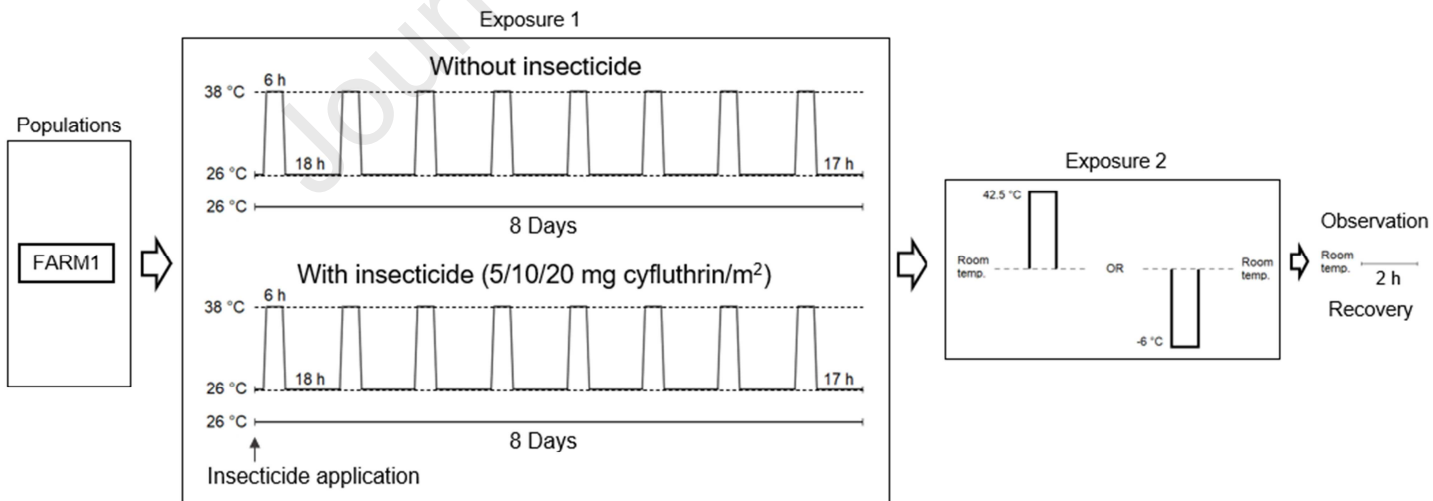
548

549

Appendix figure 1 Schematic presentation of the design of experiment 1



Appendix figure 2 Schematic presentation of the design of experiment 2



Appendix figure 3 Schematic presentation of the design of experiment 3. The second part of the experiment (Exposure 2 and recovery observations) was identical to experiment 1, and can be seen in larger version in Appendix figure 1.

550

551

552
553
554
555
556
557
558
559
560
561
562
563
564

565 **Supplementary File 3**

566 Appendix table 1: Detailed statistical results of experiment 1 (corresponding to results presented in
567 Figures 1 and 2 in the main text of the article). Pairwise comparisons (Log-Rank tests; graphs A-F)
568 were performed using the Survdiff function in R. Significant p values are presented in bold.

Recovery from extreme heat (42.5 °C)			
Duration	15 minutes exposure		
Population	FARM 3	FARM 2	FARM 1
FARM 2	4.90E-06	-	-
FARM 1	4.90E-06	1.0000	-
LAB	0.004	< 2.00E-16	< 2.00E-16

Recovery from extreme heat (42.5 °C)			
Duration	30 minutes exposure		
Population	FARM 3	FARM 2	FARM 1
FARM 2	0.0020	-	-
FARM 1	0.0020	0.8152	-

Recovery from extreme cold (- 6 °C)			
Duration	15 minutes exposure		
Population	FARM 3	FARM 2	FARM 1
FARM 2	0.7078	-	-
FARM 1	0.0105	0.1059	-
LAB	7.60E-06	0.0013	0.0082

Recovery from extreme cold (- 6 °C)			
Duration	30 minutes exposure		
Population	FARM 3	FARM 2	FARM 1
FARM 2	0.6470	-	-
FARM 1	0.1430	0.1430	-

LAB | **0.0004** **3.20E-14** < **2.00E-16**

Duration	1 hour exposure		
Population	FARM 3	FARM 2	FARM 1
FARM 2	0.0001	-	-
FARM 1	4.90E-07	0.9446	-
LAB	0.3298	2.00E-08	2.70E-12

Duration	2 hours exposure		
Population	FARM 3	FARM 2	FARM 1
FARM 2	2.80E-06	-	-
FARM 1	2.30E-05	0.2720	-
LAB	0.0190	1.00E-07	1.70E-08

Duration	3 hours exposure		
Population	FARM 3	FARM 2	FARM 1
FARM 2	1.70E-08	-	-
FARM 1	3.40E-10	0.6024	-
LAB	0.0002	5.30E-14	1.50E-14

Duration	4 hours exposure		
Population	FARM 3	FARM 2	FARM 1
FARM 2	0.0591	-	-
FARM 1	5.00E-06	0.0591	-
LAB	0.0121	0.0002	1.10E-08

LAB | 0.0720 0.1430 0.2050

Duration	1 hour exposure		
Population	FARM 3	FARM 2	FARM 1
FARM 2	0.5049	-	-
FARM 1	0.8946	0.5049	-
LAB	0.0039	0.0449	0.0080

Duration	2 hours exposure		
Population	FARM 3	FARM 2	FARM 1
FARM 2	0.3069	-	-
FARM 1	1.80E-07	0.0042	-
LAB	< 2.00E-16	2.20E-11	1.60E-10

Duration	3 hours exposure		
Population	FARM 3	FARM 2	FARM 1
FARM 2	0.4633	-	-
FARM 1	0.0019	0.0080	-
LAB	2.00E-13	< 2.00E-16	< 2.00E-16

Duration	4 hours exposure		
Population	FARM 3	FARM 2	FARM 1
FARM 2	0.4142	-	-
FARM 1	0.0002	0.0137	-
LAB	< 2.00E-16	< 2.00E-16	< 2.00E-16

569

570 Appendix table 2: Detailed statistical results of experiment 2 (corresponding to results presented in
 571 Figure 3 in the main text of the article). Overall ANOVA tests (type II) to the left, Sidak adjusted *post*
 572 *hoc* test to the right. All data made using 95% confidence level, significant P-values are presented in
 573 bold.

FARM1	Chisq	Df	P-value
Daily heat spikes	0.6414	1	0.4232
Cyfluthrin treatment	16.6845	1	4.41E-05
Daily heat spikes & Cyfluthrin	1.1667	1	0.2801

FARM2	Chisq	Df	P-value
Daily heat spikes	13.7	1	0.000214
Cyfluthrin treatment	973.44	1	2.20E-16
Daily heat spikes & Cyfluthrin	0.08	1	0.775383

FARM1	LCL	UCL	Group
Daily heat spikes & Cyfluthrin	0.931	0.973	a
Cyfluthrin treatment	0.947	0.983	ab
Control	0.968	0.994	b
Daily heat spikes	0.973	0.996	b

FARM2	LCL	UCL	Group
Daily heat spikes & Cyfluthrin	0.484	0.567	a
Cyfluthrin treatment	0.569	0.651	b
Control	0.981	0.999	c
Daily heat spikes	0	1	abc

FARM3	Chisq	Df	P-value
Daily heat spikes	1.52	1	0.218
Cyfluthrin treatment	603.76	1	2.00E-16
Daily heat spikes & Cyfluthrin	0.02	1	0.8857

LAB	Chisq	Df	P-value
Daily heat spikes	9.53	1	0.002018
Cyfluthrin treatment	631.06	1	2.20E-16
Daily heat spikes & Cyfluthrin	0.27	1	0.604759

FARM3	LCL	UCL	Group
Daily heat spikes & Cyfluthrin	0.329	0.469	a
Cyfluthrin treatment	0.377	0.519	a
Control	0.961	1	b
Daily heat spikes	0.961	1	b

LAB	LCL	UCL	Group
Daily heat spikes & Cyfluthrin	0.084	0.193	a
Cyfluthrin treatment	0.177	0.315	b
Control	0.929	0.999	c
Daily heat spikes	0.929	0.999	c

574

575

576

577

578

579

580

581

582 Appendix table 3: Detailed statistical result of experiment 3 (corresponding to results presented in
 583 Figure 4 in the main text of the article). Pairwise comparisons using Log-Rank test were performed
 584 using the Survdiff function in R. Significant p values are presented in bold.

Extreme heat (42.5 °C) tolerance data

Insecticide conc. mg cyfluthrin/ m2	Pre-treatment peaks: non		
	0	5	10
5	1.60E-06	-	-
10	< 2.00E-16	3.40E-09	-
20	< 2.00E-16	< 2.00E-16	9.20E-14

Extreme cold (- 6 °C) tolerance data

Insecticide conc. mg cyfluthrin/ m2	Pre-treatment peaks: non		
	0	5	10
5	0.4598	-	-
10	0.0627	0.1072	-
20	0.0064	0.0341	0.7462

Insecticide conc. mg cyfluthrin/ m2	Pre-treatment peaks: 32 °C		
	0	5	10
5	2.2E-06	-	-
10	2.0E-14	9.4E-09	-

Insecticide conc. mg cyfluthrin/ m2	Pre-treatment peaks: 32 °C		
	0	5	10
5	1.0E-05	-	-
10	3.6E-07	0.25036	-

20 < 2.0E-16 < 2.0E-16 5.9E-07				20 5.2E-16 1.2E-05 0.00038			
Insecticide conc. mg cyfluthrin/ m2	Pre-treatment peaks: 38 °C			Insecticide conc. mg cyfluthrin/ m2	Pre-treatment peaks: 38 °C		
	0	5	10		0	5	10
5	0.17	-	-	5	0.25	-	-
10	2.7E-05	1.3E-05	-	10	0.7	0.65	-
20	1.4E-14	1.9E-15	7.7E-05	20	5.0E-07	8.3E-08	1.3E-07

585

586 Appendix table 4: Bold numbers represent p values showing significant differences between graphs,
 587 bold and italicized p values showing significantly slower recovery in insects having experienced daily
 588 heat spikes in pre-treatment.

Pre-treatment	constant VS 32 °C peaks		constant VS 38 °C peaks	
	42.5 °C	-6 °C	42.5 °C	-6 °C
Cyfluthrin conc. 0	0.036	0.092	0.045	0.29
Cyfluthrin conc. 5	0.02	0.07	< 0.0001	0.0016
Cyfluthrin conc. 10	0.068	0.62	< 0.0001	0.00041
Cyfluthrin conc. 20	< 0.0001	< 0.0001	< 0.0001	0.4

590

591

592

593

594 References

595 Abbes, Khaled et al. 2015. "Combined Non-Target Effects of Insecticide and High Temperature
 596 on the Parasitoid *Bracon Nigricans*." *PLoS ONE* 10(9): e0138411.

597 Addo-Bediako, Abraham, Steven L Chown, and Kevin J Gaston. 2000. "Thermal Tolerance ,
 598 Climatic Variability and Latitude." *Proceedings of the Royal Society of London B* 267(1445):
 599 739–45.

600 ANSES. 2020. "Bulletin Mensuel Des Autorisations de Mise Sur Le Marché (AMM) Des Produits
 601 Phytopharmaceutiques et Adjuvants." *Agence Nationale de Sécurité Sanitaire* 2020(10).

602 Arambourou, H el ene, and Robby Stoks. 2015. "Combined Effects of Larval Exposure to a Heat
 603 Wave and Chlorpyrifos in Northern and Southern Populations of the Damselfly *Ischnura*
 604 *Elegans*." *Chemosphere* 128: 148–54.

605 Arias, Mar a Bel en, Mar a Josefina Poupin, and Marco A. Lardies. 2011. "Plasticity of Life-Cycle,
 606 Physiological Thermal Traits and Hsp70 Gene Expression in an Insect along the Ontogeny:

- 607 Effect of Temperature Variability." *Journal of Thermal Biology* 36(6): 355–62.
- 608 Arthur, Frank H. 1999. "Effect of Temperature on Residual Toxicity of Cyfluthrin Wettable
609 Powder." *Journal of Economic Entomology* 92(3): 695–99.
- 610 Aviles, Amandine et al. 2019. "Effects of DEHP on Post-Embryonic Development, Nuclear
611 Receptor Expression, Metabolite and Ecdysteroid Concentrations of the Moth *Spodoptera*
612 *Littoralis*." *Chemosphere* 215: 725–38.
- 613 Op de Beeck, Lin, Julie Verheyen, and Robby Stoks. 2017. "Integrating Both Interaction
614 Pathways between Warming and Pesticide Exposure on Upper Thermal Tolerance in High-
615 and Low-Latitude Populations of an Aquatic Insect." *Environmental Pollution* 224: 714–21.
- 616 ——. 2018. "Strong Differences between Two Congeneric Species in Sensitivity to Pesticides in
617 a Warming World." *Science of the Total Environment* 618: 60–69.
- 618 Benjamini, Yoav, and Yosef Hochberg. 1995. "Controlling the False Discovery Rate: A Practical
619 and Powerful Approach to Multiple Testing." *Journal of the Royal Statistical Society: Series*
620 *B (Methodological)* 57(1): 289–300.
- 621 Bindsbøl, Anne-Mette, Mark Bayley, Christian Damgaard, and Martin Holmstrup. 2009.
622 "Impacts of Heavy Metals, Polyaromatic Hydrocarbons, and Pesticides on Freeze Tolerance
623 of the Earthworm *Dendrobaena Octaedra*." *Environmental Toxicology and Chemistry*
624 28(11): 2341–47.
- 625 Bjørge, Julie Dahl et al. 2018. "Role of Temperature on Growth and Metabolic Rate in the
626 Tenebrionid Beetles *Alphitobius Diaperinus* and *Tenebrio Molitor*." *Journal of Insect*
627 *Physiology* 107: 89–96.
- 628 Böttger, R., J. Schaller, and S. Mohr. 2012. "Closer to Reality - the Influence of Toxicity Test
629 Modifications on the Sensitivity of *Gammarus Roeseli* to the Insecticide Imidacloprid."
630 *Ecotoxicology and Environmental Safety* 81: 49–54.
- 631 Bozinovic, Francisco et al. 2011. "The Mean and Variance of Environmental Temperature
632 Interact to Determine Physiological Tolerance and Fitness." *Physiological and Biochemical*
633 *Zoology* 84(6): 543–52.
- 634 Bozinovic, Francisco, and Hans Otto Pörtner. 2015. "Physiological Ecology Meets Climate
635 Change." *Ecology and Evolution* 5(5): 1025–30.
- 636 Buchwalter, David B., Jeffrey J. Jenkins, and Lawrence R. Curtis. 2003. "Temperature Influences
637 on Water Permeability and Chlorpyrifos Uptake in Aquatic Insects with Differing
638 Respiratory Strategies." *Environmental Toxicology and Chemistry* 22(11): 2806–12.
- 639 Buckley, Lauren B. et al. 2010. "Can Mechanism Inform Species' Distribution Models?" *Ecology*
640 *Letters* 13(8): 1041–54.
- 641 Cairns, John, Alan G. Heath, and Bruce C. Parker. 1975. "The Effects of Temperature upon the
642 Toxicity of Chemicals to Aquatic Organisms." *Hydrobiologia* 47(1): 135–71.

- 643 Calow, P. 1991. "Physiological Costs of Combating Chemical Toxicants: Ecological Implications."
644 *Comparative Biochemistry and Physiology. Part C, Comparative* 100(1–2): 3–6.
- 645 Camp, A. A., and D. B. Buchwalter. 2016. "Can't Take the Heat: Temperature-Enhanced Toxicity
646 in the Mayfly *Isonychia Bicolor* Exposed to the Neonicotinoid Insecticide Imidacloprid."
647 *Aquatic Toxicology* 178: 49–57.
- 648 Cavieres, Grisel et al. 2019. "Transgenerational and within - Generation Plasticity Shape Thermal
649 Performance Curves." *Ecology and Evolution*: 1–11.
- 650 Chen, Xi, and Jonathon H Stillman. 2012. "Multigenerational Analysis of Temperature and
651 Salinity Variability Affects on Metabolic Rate, Generation Time, and Acute Thermal and
652 Salinity Tolerance in *Daphnia Pulex*." *Journal of Thermal Biology* 37: 185–94.
- 653 Chernaki-Leffer, Andreia Mauruto, Daniel Ricardo Sosa-Gómez, Lúcia M. Almeida, and Ivani de
654 Oliveira Negrão Lopes. 2011. "Susceptibility of *Alphitobius Diaperinus* (Panzer) (Coleoptera,
655 Tenebrionidae) to Cypermethrin, Dichlorvos and Triflumuron in Southern Brazil." *Revista*
656 *Brasileira de Entomologia* 55(1): 125–28.
- 657 Chidawanyika, Frank, and John S Terblanche. 2010. "Rapid Thermal Responses and Thermal
658 Tolerance in Adult Codling Moth *Cydia Pomonella* (Lepidoptera: Tortricidae)." *Journal of*
659 *Insect Physiology* 57: 108–17.
- 660 Chown, Steven L. et al. 2010. "Adapting to Climate Change: A Perspective from Evolutionary
661 Physiology." *Climate Research* 43(1–2): 3–15.
- 662 Colinet, Hervé, Brent J. Sinclair, Philippe Vernon, and David Renault. 2015. "Insects in
663 Fluctuating Thermal Environments." *Annual Review of Entomology* 60(1): 123–40.
- 664 Delnat, Vienna et al. 2019. "Temperature Variation Magnifies Chlorpyrifos Toxicity Differently
665 between Larval and Adult Mosquitoes." *Science of the Total Environment* 690: 1237–44.
- 666 Delnat, Vienna, Lizanne Janssens, and Robby Stoks. 2019. "Whether Warming Magnifies the
667 Toxicity of a Pesticide Is Strongly Dependent on the Concentration and the Null Model."
668 *Aquatic Toxicology* 211: 38–45.
- 669 Desvignes-Labarthe, A. 2018. Master thesis dissertation, University Pierre & Marie Curie, Paris,
670 France "Détection et Quantification de La Résistance Aux Insecticides Chez *Alphitobius*
671 *Diaperinus* (Tenebrionidae), Un Insecte Invasif Des Agro-Écosystèmes."
- 672 Dewar, Youssef et al. 2016. "Behavioral and Metabolic Effects of Sublethal Doses of Two
673 Insecticides, Chlorpyrifos and Methomyl, in the Egyptian Cotton Leafworm, *Spodoptera*
674 *Littoralis* (Boisduval) (Lepidoptera: Noctuidae)." *Environmental Science and Pollution*
675 *Research* 23(4): 3086–96.
- 676 Dinh, Khuong V., Lizanne Janssens, and Robby Stoks. 2016. "Exposure to a Heat Wave under
677 Food Limitation Makes an Agricultural Insecticide Lethal: A Mechanistic Laboratory
678 Experiment." *Global Change Biology* 22(10): 3361–72.
- 679 Donald, James O. 2010. Ross Broiler Report *Environmental Management in the Broiler House*.

- 680 Engell Dahl, Julie et al. 2019. "Thermal Tolerance Patterns of a Carabid Beetle Sampled along
681 Invasion and Altitudinal Gradients at a Sub-Antarctic Island." *Journal of Thermal Biology* 86:
682 102447.
- 683 Fox, John, and Sanford Weisberg. 2019. *An R Companion to Applied Regression*. Third edit.
684 Thousand Oaks CA.
- 685 Geden, Christopher J., and Jerome A. Hogsette. 1994. "Research and Extension Needs for
686 Integrated Pest Management for Arthropods of Veterinary Importance." *Proceeding of a*
687 *workshop in Lincoln, Nebraska*. (October): 1–328.
- 688 Graves, Spencer, Hans-Peter Piepho, and Luciano Selzer. 2019. "MultcompView: Visualizations
689 of Paired Comparisons. R Package Version 0.1-8." [https://cran.r-](https://cran.r-project.org/package=multcompView)
690 [project.org/package=multcompView](https://cran.r-project.org/package=multcompView).
- 691 Guillebeau, L. P., J. N. All, and A. M. Javid. 1989. "Influence of Weather on Efficacy of Pyrethroid
692 Insecticides for Boll Weevil (Coleoptera: Curculionidae) and Bollworm (Lepidoptera:
693 Noctuidae) in Cotton." *Journal of Economic Entomology* 82(1): 291–96.
- 694 Hamm, Ronda L et al. 2006. "Resistance to Cyfluthrin and Tetrachlorvinphos in the Lesser
695 Mealworm, *Alphitobius Diaperinus*, Collected from the Eastern United States." *Pest*
696 *Management Science* 62: 673–77.
- 697 Hansen, James, Makiko Sato, and Reto Ruedy. 2012. "Perception of Climate Change."
698 *Proceedings of the National Academy of Sciences of the United States of America* 109(37).
- 699 Harwood, Amanda D., Jing You, and Michael J. Lydy. 2009. "Temperature as a Toxicity
700 Identification Evaluation Tool for Pyrethroid Insecticides: Toxicokinetic Confirmation."
701 *Environmental Toxicology and Chemistry* 28(5): 1051–58.
- 702 Hawkins, Nichola J., Chris Bass, Andrea Dixon, and Paul Neve. 2018. "The Evolutionary Origins of
703 Pesticide Resistance." *Biological Reviews* 94(1): 135–55.
- 704 Hazell, Steaphan P. et al. 2008. "A Method for the Rapid Measurement of Thermal Tolerance
705 Traits in Studies of Small Insects." *Physiological Entomology* 33(4): 389–94.
- 706 Heath, Susan, Wayne A. Bennett, James Kennedy, and Thomas L. Beitinger. 1994. "Heat and
707 Cold Tolerance of the Fathead Minnow, *Pimephales Promelas*, Exposed to the Synthetic
708 Pyrethroid Cyfluthrin." *Canadian Journal of Fisheries and Aquatic Sciences* 51(2): 437–40.
- 709 Hirose, Masafumi, and Kenji Nakamura. 2005. "Spatial and Diurnal Variation of Precipitation
710 Systems over Asia Observed by the TRMM Precipitation Radar." *Journal of Geophysical*
711 *Research D: Atmospheres* 110(5): 1–14.
- 712 Holmstrup, Martin et al. 2010. "Interactions between Effects of Environmental Chemicals and
713 Natural Stressors: A Review." *Science of the Total Environment* 408(18): 3746–62.
- 714 Hooper, Michael J. et al. 2013. "Interactions between Chemical and Climate Stressors: A Role for
715 Mechanistic Toxicology in Assessing Climate Change Risks." *Environmental Toxicology and*
716 *Chemistry* 32(1): 32–48.

- 717 Huey, Raymond B, and R D Stevenson. 1979. "Intergrating Thermal Physiology and Ecology of
718 Ecotherms: A Discussion of Approaches." *American Zoologist* 19(1): 357–66.
- 719 IPCC. 2014. Climate Change 2014: Synthesis Report. Contribution of Working Groups I, II and III
720 to the Fifth Assessment Report of the Intergovernmental Panel on Climate Change
721 *Summary for Policymakers*.
- 722 Johnson, Félicia, Adolphe Gueu Gbon, and Jean Pierre Boga. 2018. "Insectes Des Bâtiments
723 d'élevages Avicoles Des Fermes de Bingerville, Côte d'Ivoire : *Alphitobius Diaperinus*
724 (Panzer, 1797) (Coleoptera: Tenebrionidae)." *European Scientific Journal, ESJ* 14(27): 215–
725 28.
- 726 Käfer, Helmut et al. 2020. "Temperature Tolerance and Thermal Environment of European Seed
727 Bugs." *Insects* 11(3).
- 728 Kassambara, Alboukadel, and Marcin Kosinski. 2018. "Survminer: Drawing Survival Curves Using
729 'Ggplot2'. R Package Version 0.4.3." <https://cran.r-project.org/package=survminer>.
- 730 Katz, Richard W, and Barbara G Brown. 1992. "Extreme Events in a Changing Climate: Variability
731 Is More Important than Averages." *Climatic Change* 21: 289–302.
- 732 Kaunisto, Sirpa, Laura V Ferguson, and Brent J Sinclair. 2016. "Can We Predict the Effects of
733 Multiple Stressors on Insects in a Changing Climate?" *Current Opinion in Insect Science* 17:
734 55–61.
- 735 Khan, Hafiz Azhar Ali, and Waseem Akram. 2014. "The Effect of Temperature on the Toxicity of
736 Insecticides against *Musca Domestica* L.: Implications for the Effective Management of
737 Diarrhea." *PloS one* 9(4): e95636.
- 738 Kingsolver, Joel G., Sarah E. Diamond, and Lauren B. Buckley. 2013. "Heat Stress and the Fitness
739 Consequences of Climate Change for Terrestrial Ectotherms." *Functional Ecology* 27(6):
740 1415–23.
- 741 Kingsolver, Joel G, Heidi J Maclean, Silvan B Goddin, and Kate E Augustine. 2016. "Plasticity of
742 Upper Thermal Limits to Acute and Chronic Temperature Variation in *Manduca Sexta*
743 Larvae." *Journal of Experimental Biology* 219: 1290–94.
- 744 Köhler, Heinz R., and Rita Triebkorn. 2013. "Wildlife Ecotoxicology of Pesticides: Can We Track
745 Effects to the Population Level and Beyond?" *Science* 341(6147): 759–65.
- 746 Lachenicht, M W et al. 2010. "Effects of Acclimation Temperature on Thermal Tolerance,
747 Locomotion Performance and Respiratory Metabolism in *Acheta Domesticus* L.
748 (Orthoptera: Gryllidae)." *Journal of Insect Physiology* 56: 822–30.
- 749 Lalouette, Lisa et al. 2016. "Unexpected Effects of Sublethal Doses of Insecticide on the
750 Peripheral Olfactory Response and Sexual Behavior in a Pest Insect." *Environmental Science
751 and Pollution Research* 23(4): 3073–85.
- 752 Lambkin, Trevor A., and Steven J. Rice. 2009. "Baseline Responses of *Alphitobius Diaperinus*
753 (Coleoptera: Tenebrionidae) to Cyfluthrin and Detection of Strong Resistance in Field

- 754 Populations in Eastern Australia." *Journal of Economic Entomology* 99(3): 908–13.
- 755 Laskowski, Ryszard et al. 2010. "Interactions between Toxic Chemicals and Natural
756 Environmental Factors — A Meta-Analysis and Case Studies." *Science of The Total*
757 *Environment* 408(18): 3763–74.
- 758 Lenth, Russell V. 2020. "Emmeans: Estimated Marginal Means, Aka Least-Squares Means. R
759 Package Version 1.5.3." <https://cran.r-project.org/package=emmeans>.
- 760 Lushchak, Volodymyr I et al. 2018. "Pesticide Toxicity: A Mechanistic Approach." *EXCLI Journal*
761 17: 1101–36.
- 762 Lydy, M. J., J. B. Belden, and M. A. Ternes. 1999. "Effects of Temperature on the Toxicity of M-
763 Parathion, Chlorpyrifos, and Pentachlorobenzene to *Chironomus Tentans*." *Archives of*
764 *Environmental Contamination and Toxicology* 37(4): 542–47.
- 765 Ma, Gang, Ary A. Hoffmann, and Chun Sen Ma. 2015. "Daily Temperature Extremes Play an
766 Important Role in Predicting Thermal Effects." *Journal of Experimental Biology* 218(14):
767 2289–96.
- 768 Maino, James L, Paul A Umina, and Ary A Hoffmann. 2018. "Climate Contributes to the Evolution
769 of Pesticide Resistance." *Global Ecology and Biogeography* 27: 223–32.
- 770 Mann, Michael E, Raymond S Bradley, and Malcolm K Hughes. 1998. "Global-Scale Temperature
771 Patterns and Climate Forcing over the Past Six Centuries." *Nature* 392: 779–87.
- 772 Matzrafi, Maor. 2019. "Climate Change Exacerbates Pest Damage through Reduced Pesticide
773 Efficacy." *Pest Management Science* 75(1): 9–13.
- 774 Meng, Shandong, Vienna Delnat, and Robby Stoks. 2020. "The Exposure Order Strongly Modifies
775 How a Heat Spike Increases Pesticide Toxicity." *Environmental Science and Technology*
776 54(18): 11476–84.
- 777 Miller, Merrill C., Harvey W. Mohrenweiser, and Douglas A. Bell. 2001. "Genetic Variability in
778 Susceptibility and Response to Toxicants." *Toxicology Letters* 120(1–3): 269–80.
- 779 Moe, S Jannicke et al. 2013. "Combined and Interactive Effects of Global Climate Change and
780 Toxicants on Populations and Communities." *Environmental Toxicology and Chemistry*
781 32(1): 49–61.
- 782 Nakagawa, Lia Emi et al. 2017. "Pyrethroid Concentrations and Persistence Following Indoor
783 Application." *Environmental Toxicology and Chemistry* 36(11): 2895–98.
- 784 Neven, L. G. 2000. "Physiological Responses of Insects to Heat." *Postharvest Biology and*
785 *Technology* 21(1): 103–11.
- 786 Noyes, Pamela D. et al. 2009. "The Toxicology of Climate Change: Environmental Contaminants
787 in a Warming World." *Environment International*.
- 788 Noyes, Pamela D., and Sean C. Lema. 2015. "Forecasting the Impacts of Chemical Pollution and
789 Climate Change Interactions on the Health of Wildlife." *Current Zoology* 61(4): 669–89.

- 790 Oliver, Shüné V., and Basil D. Brooke. 2017. "The Effect of Elevated Temperatures on the Life
791 History and Insecticide Resistance Phenotype of the Major Malaria Vector *Anopheles*
792 *Arabiensis* (Diptera: Culicidae)." *Malaria Journal* 16(73).
- 793 Orr, James A. et al. 2020. "Towards a Unified Study of Multiple Stressors: Divisions and Common
794 Goals across Research Disciplines." *Proceedings of the Royal Society B: Biological Sciences*
795 287(1926).
- 796 Overgaard, Johannes et al. 2007. "Metabolomic Profiling of Rapid Cold Hardening and Cold
797 Shock in *Drosophila Melanogaster*." *Journal of Insect Physiology* 53: 1218–32.
- 798 Overgaard, Johannes, Ary A. Hoffmann, and Torsten N. Kristensen. 2011. "Assessing Population
799 and Environmental Effects on Thermal Resistance in *Drosophila Melanogaster* Using
800 Ecologically Relevant Assays." *Journal of Thermal Biology* 36: 409–16.
- 801 Patra, Ronald W., John C. Chapman, Richard P. Lim, and Peter C. Gehrke. 2007. "The Effects of
802 Three Organic Chemicals on the Upper Thermal Tolerances of Four Freshwater Fishes."
803 *Environmental Toxicology and Chemistry* 26(7): 1454–59.
- 804 Pu, Jian, Zinan Wang, and Henry Chung. 2020. "Climate Change and the Genetics of Insecticide
805 Resistance." *Pest Management Science* 76(3): 846–52.
- 806 R Core Team. 2013. "R: A Language and Environment for Statistical Computing." [http://www.r-](http://www.r-project.org/)
807 [project.org/](http://www.r-project.org/).
- 808 Renault, David. 2011. "Long-Term after-Effects of Cold Exposure in Adult *Alphitobius Diaperinus*
809 (Tenebrionidae): The Need to Link Survival Ability with Subsequent Reproductive Success."
810 *Ecological Entomology* 36(1): 36–42.
- 811 Renault, David, and Hervé Colinet. 2021. *Large Differences in the Susceptibility to Commercial*
812 *Insecticides among Several Populations of the Lesser Mealworm (*Alphitobius Diaperinus*)*
813 *Collected from Poultry Houses in France*.
- 814 Rice, S. J., and T. A. Lambkin. 2009. "A New Culture Method for Lesser Mealworm, *Alphitobius*
815 *Diaperinus*." *Journal of Applied Entomology* 133(1): 67–72.
- 816 Rueda, L. M., and R. C. Axtell. 1997. "Arthropods in Litter of Poultry (Broiler Chicken and Turkey)
817 Houses." *Journal of Agricultural Entomology* 14(1): 81–91.
- 818 Salin, Christophe, Y. R. Delettre, and Philippe Vernon. 2003. "Controlling the Mealworm
819 *Alphitobius Diaperinus* (Coleoptera: Tenebrionidae) in Broiler and Turkey Houses: Field
820 Trials with a Combined Insecticide Treatment: Insect Growth Regulator and Pyrethroid."
821 *Journal of Economic Entomology* 96(1): 126–30.
- 822 Salin, Christophe, and Philippe Vernon. 1997. Rapport scientifique Bayern AG, Université de
823 Rennes-1 et UMR 6553 *Efficiency Tests in Natural Conditions of Baycidal (Triflumuron) and*
824 *Solfac (Cyfluthrine) against Coleoptera in Poultry Breeding Systems*.
- 825 Satpute, N. S. et al. 2007. "Temperature-Dependent Variation in Toxicity of Insecticides against
826 *Earias Vitella* (Lepidoptera: Noctuidae)." *Journal of Economic Entomology* 100(2): 357–60.

- 827 Sinclair, Brent J. et al. 2016. "Can We Predict Ectotherm Responses to Climate Change Using
828 Thermal Performance Curves and Body Temperatures?" *Ecology Letters* 19(11): 1372–85.
- 829 Sinclair, Brent J., Laura V. Ferguson, Golnaz Salehipour-Shirazi, and Heath A. Macmillan. 2013.
830 "Cross-Tolerance and Cross-Talk in the Cold: Relating Low Temperatures to Desiccation and
831 Immune Stress in Insects." *Integrative and Comparative Biology* 53(4): 545–56.
- 832 Sinclair, Brent J, Litza E Coello Alvarado, and Laura V Ferguson. 2015. "An Invitation to Measure
833 Insect Cold Tolerance: Methods, Approaches, and Workflow." *Journal of Thermal Biology*
834 53: 180–97.
- 835 Soranno, Patricia A. et al. 2019. "Spatial and Temporal Variation of Ecosystem Properties at
836 Macroscales." *Ecology Letters* 22(10): 1587–98.
- 837 Stillman, Jonathon H. 2019. "Heat Waves, the New Normal: Summertime Temperature Extremes
838 Will Impact Animals, Ecosystems, and Human Communities." *Physiology* 34(2): 86–100.
- 839 Tang, Wangxin et al. 2017. "Pyrethroid Pesticide Residues in the Global Environment: An
840 Overview." *ECSN*. <https://doi.org/10.1016/j.chemosphere.2017.10.115>.
- 841 Teets, Nicholas M., and David L. Denlinger. 2013. "Physiological Mechanisms of Seasonal and
842 Rapid Cold-Hardening in Insects." *Physiological Entomology* 38(2): 105–16.
- 843 Tilman, David et al. 2002. "Agricultural Sustainability and Intensive Production Practices."
844 *Nature* 418: 671–77.
- 845 Vasseur, David A et al. 2014. "Increased Temperature Variation Poses a Greater Risk to Species
846 than Climate Warming." *Proceedings of the royal society B* 281: 20132612.
- 847 Verheyen, Julie, Vienna Delnat, and Robby Stoks. 2019. "Increased Daily Temperature
848 Fluctuations Overrule the Ability of Gradual Thermal Evolution to Offset the Increased
849 Pesticide Toxicity under Global Warming." *Environmental Science and Technology* 53(8):
850 4600–4608.
- 851 Verheyen, Julie, and Robby Stoks. 2019. "Current and Future Daily Temperature Fluctuations
852 Make a Pesticide More Toxic: Contrasting Effects on Life History and Physiology."
853 *Environmental Pollution* 248: 209–18.
- 854 Weldon, Christopher W., John S. Terblanche, and Steven L. Chown. 2011. "Time-Course for
855 Attainment and Reversal of Acclimation to Constant Temperature in Two *Ceratitis* Species."
856 *Journal of Thermal Biology* 36(8): 479–85.
857 <https://linkinghub.elsevier.com/retrieve/pii/S0306456511001136> (July 18, 2019).
- 858 Willming, Morgan M., Guangqiu Qin, and Jonathan D. Maul. 2013. "Effects of Environmentally
859 Realistic Daily Temperature Variation on Pesticide Toxicity to Aquatic Invertebrates."
860 *Environmental Toxicology and Chemistry* 32(12): 2738–45.
- 861 Zhu, Y. J., C. Sengonca, and B. Liu. 2006. "Toxicity of Biocide GCSC-BtA on Arthropod Pests under
862 Different Temperature Conditions." *Journal of Pest Science* 79(2): 89–94.

Journal Pre-proof

Highlights:

- Thermal tolerance varied among populations of the lesser mealworm
- Detrimental effect of simultaneous exposure to stressors, but no interaction
- Pre-exposure to daily heat peaks decreased recovery time from heat shock
- Previous insecticide exposure reduced tolerance of extreme temperatures

Journal Pre-proof

Declaration of interests

The authors declare that they have no known competing financial interests or personal relationships that could have appeared to influence the work reported in this paper.

The authors declare the following financial interests/personal relationships which may be considered as potential competing interests:

Journal Pre-proof