



HAL
open science

EEG individual power profiles correlate with tension along spine in horses

Mathilde Stomp, Serenella D'ingeo, Séverine Henry, Clémence Lesimple, Hugo Cousillas, Martine Hausberger

► **To cite this version:**

Mathilde Stomp, Serenella D'ingeo, Séverine Henry, Clémence Lesimple, Hugo Cousillas, et al.. EEG individual power profiles correlate with tension along spine in horses. PLoS ONE, 2020, 15 (12), pp.e0243970. 10.1371/journal.pone.0243970 . hal-03136156

HAL Id: hal-03136156

<https://univ-rennes.hal.science/hal-03136156v1>

Submitted on 9 Feb 2021

HAL is a multi-disciplinary open access archive for the deposit and dissemination of scientific research documents, whether they are published or not. The documents may come from teaching and research institutions in France or abroad, or from public or private research centers.

L'archive ouverte pluridisciplinaire **HAL**, est destinée au dépôt et à la diffusion de documents scientifiques de niveau recherche, publiés ou non, émanant des établissements d'enseignement et de recherche français ou étrangers, des laboratoires publics ou privés.

RESEARCH ARTICLE

EEG individual power profiles correlate with tension along spine in horses

Mathilde Stomp^{1*}, Serenella d'Ingeo^{1,2}, Séverine Henry¹, Clémence Lesimple¹, Hugo Cousillas¹, Martine Hausberger¹**1** Univ Rennes, Normandie Univ, CNRS, EthoS (Éthologie animale et humaine)—UMR 6552, Paimpont, France, **2** Department of Veterinary Medicine, Section of Animal Physiology and Behaviour, University of Bari “Aldo Moro”, Bari, Italy* mathilde.stomp@hotmail.fr

Abstract

Assessing chronic pain is a challenge given its subjective dimension. In humans, resting state electroencephalography (EEG) is a promising tool although the results of various studies are contradictory. Spontaneous chronic pain is understudied in animals but could be of the highest interest for a comparative study. Riding horses show a very high prevalence of back disorders thought to be associated with chronic pain. Moreover, horses with known back problems show cognitive alterations, such as a lower attentional engagement. Therefore, we hypothesized that the individual EEG power profiles resting state (*i.e.* quiet standing) of different horses could reflect the state of their back, that we measured using static sEMG, a tool first promoted to assess lower back pain in human patients. Results show that 1) EEG profiles are highly stable at the intra-individual level, 2) horses with elevated back tension showed resting state EEG profiles characterized by more fast (beta and gamma) and less slow (theta and alpha) waves. The proportion of theta waves was particularly negatively correlated with muscular tension along the spine. Moreover, elevated back tension was positively correlated with the frequency of stereotypic behaviours (an “addictive-like” repetitive behavior) performed by the horses in their stall. Resting state quantitative EEG appears therefore as a very promising tool that may allow to assess individual subjective chronic pain experience, beyond more objective measures of tension. These results open new lines of research for a multi-species comparative approach and might reveal very important in the context of animal welfare.

OPEN ACCESS

Citation: Stomp M, d'Ingeo S, Henry S, Lesimple C, Cousillas H, Hausberger M (2020) EEG individual power profiles correlate with tension along spine in horses. PLoS ONE 15(12): e0243970. <https://doi.org/10.1371/journal.pone.0243970>

Editor: Vilfredo De Pascalis, La Sapienza University of Rome, ITALY

Received: May 15, 2020

Accepted: December 1, 2020

Published: December 14, 2020

Copyright: © 2020 Stomp et al. This is an open access article distributed under the terms of the [Creative Commons Attribution License](https://creativecommons.org/licenses/by/4.0/), which permits unrestricted use, distribution, and reproduction in any medium, provided the original author and source are credited.

Data Availability Statement: All relevant data are within the paper and its [Supporting Information](#) files.

Funding: Institut français du cheval et de l'équitation, Université de Rennes 1, and Centre National de la Recherche Scientifique provided support for this study in the form of funding awarded to MH, SH and MS, and Fonds Eperon provided support for this study in the form of funding awarded to MS.

Introduction

The assessment of pain, and in particular chronic pain, is a major challenge that remains difficult to solve, especially since in addition to the nociceptive stimulation, there is a subjective emotional and cognitive dimension to it [1]. All authors agree that there is a need for a reliable readout for spontaneous pain, based on a numerical measure, and that would apply on awake unrestrained subjects of different species [2]. However most behavioural or even imagery paradigms (*i.e.* grimace scales, conditioned place preference, burrowing, brain imaging) proposed

Competing interests: The authors have declared that no competing interests exist.

lately may be too subjective or lack the necessary temporal resolution to respond to these criteria [3].

Since pain reflects neural activity in the brain [2], there has been a growing interest in exploring resting state EEG oscillations as potential biomarkers in humans [3, 4]. Spectrum analysis can be used to assess resting state EEG signals in different frequency bands [5] and neuronal oscillations at different frequencies represent fundamental features of neuronal signalling [4]. Most studies performed with quantitative EEG, *i.e.* cortical wave power profiles [3], defined as an objective tool with high reliability and high clinical sensitivity that involves the use of computers and power spectral analyses [6], show a clear relation between frequency power (slow: delta, theta, alpha, or fast waves: beta, gamma) and the intensity of pain in humans [7, 8]. Differences in the F50, F95 and total power of the EEG were found in animals experiencing acute pain (sheep: [9]; lambs: [10]; calves: [11]; horses and ponies: [12]). However, results are somewhat contradictory (increase in theta versus gamma waves according to studies), which may be due to differences in procedures (spontaneous versus induced, acute versus chronic, objective/noxious versus subjective/emotional pain) [3, 4]. While quantitative EEG appears as a very promising tool, more studies on different species are needed in order to clarify its meaning.

In the present study, we used a telemetric EEG device to examine the possible relation between the relative distribution of the different EEG frequency bands and measures of back disorders (morphometry, muscular tension along the spine) in horses. Horses show a very high prevalence of back disorders and hence potential chronic back pain (35 to 100% of the ridden horses as shown through post-mortem anatomical data [13, 14], imagery [15], or palpation [16, 17]). The prevalence of back disorders in horses is not related to age [13, 18], but is associated with the type of work [15, 16]. Morphometric changes in back and neck shape (flattening of the spine, flat/hollow neck) [14, 19, 20] are associated with these differences [21–23]. Moreover, neck shape has been shown to differ between populations independently of sex, age or breed, reflecting working conditions and spine state [18, 22]. Back disorders in horses can result from various anatomical (impingement or overlap of dorsal spinous processes, left/right spinal asymmetry) or muscular problems. Thus, the presence and degree of muscular asymmetry at the horse's back level was significantly associated with osseous pathological changes, and potentially severe lesions showing active bone remodelling, *e.g.* [20]. Horses with observed back disorders are thought to experience chronic pain as their postural and behavioural (increased aggressiveness, lameness, avoidance of riding tack) characteristics strongly suggest [17, 19, 24, 25]. Static surface electromyography is a common measure of low back pain in humans with low back pain patients presenting higher sEMG levels than healthy controls [26, 27] and correlates with the evaluations of back disorders in horses by practitioners [22]. Excessive muscular activity is aggravated by nociception [28] and practitioners consider that elevated tenseness at vertebral sites reflects chronic pain [29, 30]. Horses with identified back disorders also show cognitive changes, in particular lowered attentional engagement [23]. Therefore, we hypothesized that back disorders would reflect in EEG profiles. An earlier study has shown that individual differences do exist in EEG profiles of horses recorded in a quiet standing state and that these profiles are stable over two separate sessions at least [31]. Therefore, we tested here whether there could be correlations between static sEMG (as an indicator of back state) and EEG (in terms of frequency band distribution) measures recorded independently on the same horses.

Finally, since aberrant addiction-like behaviours develop in almost a fourth of human patients with chronic back pain, often with opioid abuse [1], we also tested whether there was a relation between our measures of muscular activity and the presence and frequency of stereotypic behaviours, abnormal repetitive behaviours associated with endorphin releases. Horses'

stereotypic behaviour (defined as ‘repetitive behaviour induced by frustration, repeated attempts to cope and/or brain dysfunction’; *e.g.* [32]) and other abnormal repetitive behaviours are known to increase with chronic stress, and to constitute a reliable indicator of unfavourable conditions [33–36]. Stereotypic horses also show cognitive and reproductive impairments [37–39].

In order to test our hypothesis, 18 adult riding horses were submitted to EEG recordings using an ambulatory headset and a telemetric EEG recorder while being held standing quiet in a familiar covered arena. The relative EEG power values of delta (δ : 0–4 Hz), theta (θ : 4–8 Hz), alpha (α : 8–12 Hz), beta (β : 12–30 Hz) and gamma (γ : >30 Hz) bands were calculated for each horse. Such relative proportions have been shown to reliably reflect the attentional state of horses [40]. In parallel, their neck shape (as indicator of possible dorsal problems) was classified into flat/hollow versus round in accordance with Lesimple et al [22]’s morphometry measurements, which showed that horses with flat and hollow necks shared a tendency to have back disorders. Furthermore, thirteen of these horses could be submitted to sEMG recordings along the spine. We calculated the muscular activity’s median value of all vertebral sites along the spine per horse. In order to assess the degree of asymmetry we calculated the difference between the left and the right sides and obtained a median value of the global asymmetry along the spine per individual. We hypothesized that the spine state, which influences the affective state of the animal, would influence cognitive processing and thus brain waves production. In accordance with human studies, we predicted that: 1) since elevated/asymmetrical muscular activity along spine and a hollow/flat neck may reflect chronic back pain, these measures would be reflected in an overrepresentation of fast waves in the horses’ EEG profiles; 2) that, since stereotypic behaviours may be considered as addictive, they may be more frequent in horses with elevated muscular tension along the spine, suggestive of potential chronic pain, hence again with more fast waves.

All 18 horses were therefore also observed in their usual environment to assess the presence and frequency of stereotypic behaviours. This study is part of a larger project where relationships between life conditions, welfare state and cognitive processing are investigated [41]. Only the relationship between EEG profiles and back problems are described here on a subset of horses made available for this precise purpose. Comparisons of populations at a larger level are described elsewhere (Stomp et al. *subm.*).

Materials and methods

Ethical note

The experiments were carried out in 2017 in accordance with the European Parliament and the European Union Council relative to the animals’ protection used for scientific purposes directive 2010/63/UE and complied with the current French laws related to animal experimentation (decree n°2013–118 of 1 February 2013 and its five implementation orders (JO of 7 February 2013), integrated in the Code rural and the Code of the maritime fishing under n° R. 214–87 à R.214–137). According to these European and French laws, our experiment did not require an authorization request. Indeed, our manipulations did not cause any physical or mental pain, they consisted only of a common practice, which is the positioning of a helmet on a horse head that was held with a loose lunge in its home environment. Animal husbandry and care were under the management of the recreational horses’ owners.

Subjects

The present study was conducted in July 2017 in Brittany (France) on a total of 18 individuals, 7 females, 7 geldings and 4 stallions, from various breeds (7 breeds represented, as well as

Table 1. Characteristics of the individuals involved in the study.

| Individuals Pop.1 | Sex | Age | Individuals Pop. 2 | Sex | Age |
|-------------------|----------|-----|--------------------|---------|-----|
| S1 | Stallion | 4 | G5 | Gelding | 9 |
| S2 | Stallion | 3 | G6 | Gelding | 14 |
| G1 | Gelding | 5 | G7 | Gelding | 11 |
| G2 | Gelding | 16 | G8 | Gelding | 11 |
| G3 | Gelding | 12 | G9 | Gelding | 9 |
| G4 | Gelding | 21 | M4 | Mare | 14 |
| M1 | Mare | 19 | M5 | Mare | 12 |
| M2 | Mare | 12 | M6 | Mare | 10 |
| M3 | Mare | 15 | M7 | Mare | 12 |

<https://doi.org/10.1371/journal.pone.0243970.t001>

unregistered or mixed-breed horses; 16.6% of French Saddlebreds) and ages (4 to 21 years old) (see Table 1). Horses lived on 2 sites where they had been living in the same conditions for at least one year.

The first site included nine recreational horses ($N_{\text{mares}} = 3$; $N_{\text{stallions}} = 2$; $N_{\text{geldings}} = 4$) from various ages (4 to 21 years old, $X \pm SE = 13 \pm 6$) and breeds. The animals lived under naturalistic conditions: all year long in 1–2 ha pasture with conspecifics, fed grass and hay *ad libitum* during winter (no industrial pellets) and were used for occasional outdoor relaxed leisure riding. In the second site, nine horses ($N_{\text{mares}} = 4$, $N_{\text{geldings}} = 5$, 9 to 14 years old, $X \pm SE = 11.2 \pm 1.9$, various breeds) were living in a riding school, and were kept in 3x3 m individual straw bedded stalls in a barn, were fed industrial pellets twice a day and hay (6–7kg) once a day, and were working in riding lessons for 4–12 hours per week under the supervision of a riding teacher. The horses were ridden with typical English riding style [18]. Horses went out to paddocks (with grass) every day from one to four hours per day.

Electroencephalography (EEG) recordings & data analysis

The horses' electrophysiological activity was recorded using an ambulatory EEG headset (patent # R23701WO). This headset allows an easy and fast positioning of 5 electrodes on the horse's forehead over the frontal and parietal bones [31] (Fig 1). The electrodes were located on each side of the horse's forehead allowing the recording of the differential activity between the most occipital part of the brain and the most frontal one of the left and right hemisphere separately [31] and were filled with a conductive gel (NEURGEL250F Spes Medica) in order to ensure an electrical contact between the electrodes and the horse's head. The ground electrode was placed on the back of the left ear. The system was completed by a telemetric EEG recorder made by RF-TRACK (Cesson-Sevigne, France). The EEG amplifier, based on a Texas Instruments integrated circuit ADS1294, was connected to a Bluetooth transmitter allowing to check in real time the EEG recording quality and to an onboard micro SD card which allowed keeping a recording of the raw data during the experiments. The whole telemetric recording setup weighing 110g was fixed on the headset.

For a week before the beginning of the recordings, horses were trained daily to wear the non-invasive EEG headset (*i.e.* 5min per day). Horses show rapid changes in attentional shift and changes of state have been shown, in awake horses, around every 3–30 sec. [40, 42, 43] where horse starts changing position, moving head or ears [42–44]. Therefore, in order to enhance chances to have a reliable measure, we performed 30 sec. recording sessions when the horse was being held in absence of any artificial stimulation (*i.e.* no visual, auditory or tactile artificial stimulation), ensuring that it was quiet standing all along the procedure [40]. During

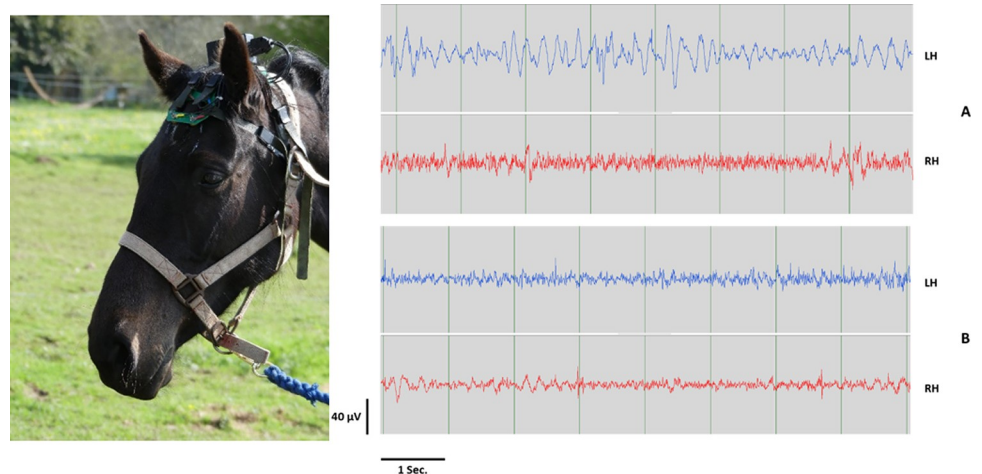


Fig 1. (left) EEG headset used in the present study. (right) Example of 8 sec. electroencephalography (EEG) recordings of left (LH) and right (RH) hemispheres obtained with the EEG headset after removing artefacts in both horse populations (A- recreational horse; B riding school horse). LH wave for recreational horses are characteristic of slow waves.

<https://doi.org/10.1371/journal.pone.0243970.g001>

the recordings, horses were handled by one of two unfamiliar experimenters (Sd'I or MH) in the familiar arena, standing 1m from the horse, arms along the body and looking to the ground. Both experimenters handled randomly recreational and riding horses in order to avoid any experimenter effect. Two EEG recordings sessions took place spaced two days apart.

The EEG recordings were then processed offline using a software “EEGReplay4.3” developed by RF-TRACK. Before the EEG analysis, the large artifacts due to movements (body, head, ears) were automatically removed using a homemade software with Python3.6.4 environment. In order to prevent any contamination from muscle artifact, we first used a smoothly Savitzky Golay function integrated in Python3.6.4. The smoothed signal was then subtracted from the raw signal to remove the large low frequency artifacts. To achieve this removing artefact process, the signal variations with amplitudes larger than 200 μV were excluded [45]. Further examination for the data showed that the maximum good quality recording duration common to all horses (in the same behavioural state) was 8 sec. Therefore, since there were no significant differences in the EEG profiles between the two sessions (Wilcoxon test, $N = 18$, Left Hemisphere: $42 < V < 96$, $0.10 < p < 0.57$; Right Hemisphere: $36 < V < 80$, $0.18 < p < 0.89$) and intra-individual reliability proved high (see [results](#)), we kept for further analysis and inter-individual comparisons the 8 seconds best quality recordings of the first session.

Once the artifacts were removed, a Fast Fourier Analysis was then performed every 4 mSec on a 1 Sec. window. Then, using “EEGReplay4.3” RF Track software, proportions of the different EEG waves (δ : < 4 Hz), theta (θ : 4–8 Hz), alpha (α : 8–12 Hz), beta (β : 12–30 Hz) and gamma (γ : > 30 Hz)) were automatically calculated from the total EEG power spectrum for both the right and the left hemisphere independently (see also [40]). Wave frequency proportions data considered for the subsequent analysis corresponded to the median proportion of the power values extracted over the continuous recording (e.g. for 8 sec.: $(250 \times 0.004\text{s})^* 8 = 2000$ measures).

Back state evaluation

Neck shape measurement. Precise measures of both neck shape and the spine state (through practitioner examination and EMGs evaluations) have shown that a hollow or a flat

neck reflects muscular tensions in different parts of the spine, while a round neck characterizes healthier backs [22]. Neck shape can easily be estimated by looking at the angle formed by the segment linking the cervic-thoracic junction and the trapezium cervical ligament at C3 with the segment linking the trapezium ligament and the dorsal part of the atlas. According to Lesimple et al [22]'s measures, the horses' neck was classified as hollow, flat or round (*i.e.* the horse was handled by an experimenter, standing in pasture for recreational horses, in stable for riding horses). Since flat and hollow necks tend to reflect an altered spine state, the horses were classified as having a round *versus* hollow/flat neck. This classification was performed following Lesimple et al 2012's methodology [22], by two observers (MS and MH), with 94.4% concordance (Kappa = 0.89, $p < 0.0001$) independently and before the EEG profiles were analyzed.

Static surface electromyogram [22]. The sEMG examinations were conducted separately by one experimenter (C.L.), blind to the results of the EEG and neck shape data, using a wire free device (Myovision®). The experimenter had 2 joysticks with 5 electrodes on each, designed to record muscular activities at the level of the vertebrae before and after the joystick location. Muscular activities recorded were relayed to a computer coupled with a receptor. The two joysticks were placed at the level of C2, C6, T3, T9, T17, and L6 (Fig 3) one on each side of the spine, and electrodes gave the muscular activities at the level of C1, C3, C5, C7, T1, T3, T8, T10, T16, T18, L5 and S1. Thus we obtained muscular activity all along the neck, at the level of the shoulder, at the basis of the withers, at the level of the thoracolumbar joint and at the level of the lumbosacral joint, which are reported in the literature as very likely to be affected by musculoskeletal lesions [46]. In the two populations, examinations were performed on a flat ground, outside the pasture in the recreational group, and in the corridor of the stable in front of each horse's box in the second group, in absence of any noise or disturbance (working activity, people around. . .). The experimenter paid attention to the horses' limb positions: forelimbs and hind limbs were on a line (*i.e.* standing square with the hind hoof directly behind the fore hoof). As the assessment of horses sEMG using Myovision® device was shown to be highly repeatable [22], each horse underwent a single evaluation. Horses were kept motionless, slightly restrained with a rope, by another experimenter (M.S.). At the time of sEMG measures, 5 horses were not available anymore, which restricted the sample size for this measure to 13 horses.

Muscular activities were recorded along the spine (312 tested sites: 13 horses * 12 vertebral sites * 2 sides of the spine) and the raw sEMG values were used (μV). In order to evaluate the global state of individuals' backs, we calculated the muscular activity's median value of all sites along the spine per horse (24 tested sites: 12 vertebral sites*2 sides). Finally, in order to assess the degree of asymmetry we calculated the difference between the left and the right sides. Thus we obtained a median value of the global asymmetry along the spine per individual.

Observations of stereotypic behaviours

All observations and tests were performed by the same trained experimenter (M.S.) during week days and generally during the quiet hours (*i.e.* outside teaching activities for riding school horses), before the two EEG recordings sessions were performed. A microphone (Sony IECM-T6) was used to record the experimenter's voice, giving individuals' information and observations. Six 10-min observation sessions (*i.e.* 60 min in all per horse) were performed when riding school horses were in their home stall and when leisure horses were in their own pasture. Observations were made during three time periods (twice for each time period): morning (10:00–12:00am), afternoon (2:00–5:00pm) and 30 min before meals (*i.e.* 9:30am and 6:00pm here, favourable for observing abnormal repetitive movements in restricted

conditions, but that did not correspond to any particular feeding time for leisure horses). Sampling was on an all-occurrence basis, with half of the horses being observed simultaneously, which means that the behaviours concerned were recorded each time they occurred and for each horse.

Data recorded were the numbers (per hour) of stereotypic behaviours and other abnormal repetitive behaviours displayed by each individual (see [Table 2](#)).

Statistical analysis

As data were not normally distributed, we used non-parametric tests [47].

In order to study the intra-individual variability between the two EEG recording sessions, we ran first Wilcoxon tests to verify that there were no difference at the populational level between both sessions and then Spearman correlation tests to examine whether individual EEG profiles (*i.e.* proportion of each wave type in each hemisphere, $N = 10$ (delta Right (R), theta R, alpha R, beta R, gamma R, delta Left (L), theta L, alpha L, beta L, gamma L)) were stable over time at the individual level. That showed no significant difference ($N = 18$, Left Hemisphere: $42 < V < 96$, $0.10 < p < 0.57$; Right Hemisphere: $36 < V < 80$, $0.18 < p < 0.89$), and considering that a previous study showed that horses have consistent power profiles over days [31], only recordings from the first session (with data for more horses since three horses could not be tested the second time for practical reasons) were kept for the subsequent analysis. As horses were trained daily during a week before the experiment to wear the EEG device, we assume that no habituation happened between the first and the second session given that horses were already habituated before the first session. Mann Whitney tests were conducted to compare wave frequency proportions according to the horses' neck shape (*i.e.* flat/hollow versus round), for the left and the right hemisphere independently, as well as the muscular tension along the spine according to the horse's neck posture. Spearman's correlation tests, including *fdr* (*i.e.* false discovery rate) corrections that automatically adjust *p* values according to the number of tests performed ($\alpha = 0.05$), were additionally performed to test relationships between wave frequency proportions measured in each hemisphere and the horses' sEMG measurements on one hand and stereotypic behavior on the other hand. Spearman correlations were additionally run between wave frequency proportions and the muscular activity recorded for each specific vertebral site on one side and on the other side. The mean value of the left and right sides was considered in that case for each vertebral site. The relationship between the horses' age and the EMG measures on one side and EEG measures on the other side have been tested using Spearman correlation tests. Finally, sex effect was not tested

Table 2. Type, classification and description of recorded abnormal repetitive behaviours.

| SB/ARB behavioural description | Type |
|---|-------|
| head tossing / nodding: vertical movements of head and neck | motor |
| striking with forelimb: horse hits the door or wall with one of its forelegs | motor |
| box walking: repetitive tracing a route within the stable | motor |
| cribbing / wind sucking: the horse grasps a fixed object with its incisors, pulls backwards and draws air into its oesophagus | oral |
| head movements (other than head tossing / nodding): movement of the head | motor |
| lip shivering: shivering of the lower lip | motor |
| repetitive displacement of the saddle support on the stall door | motor |
| tongue movements: movements of tongue, inside or outside its mouth | oral |
| repetitive biting: biting a given object in its environment | oral |
| repetitive licking: licking a given object in its environment | oral |

<https://doi.org/10.1371/journal.pone.0243970.t002>

Table 3. Individual EEG profiles correlations between the two recording sessions (Spearman correlations).

| Individuals Pop.1 | p | r | Individuals Pop. 2 | p | r |
|-------------------|------------------|------|--------------------|------------------|------|
| S1 | NA | NA | G5 | 0.08 | 0.57 |
| S2 | 0.02 | 0.70 | G6 | NA | NA |
| G1 | 0.75 | -0.1 | G7 | 0.04 | 0.64 |
| G2 | NA | NA | G8 | <0.001 | 0.93 |
| G3 | 0.02 | 0.72 | G9 | 0.004 | 0.84 |
| G4 | 0.12 | 0.52 | M4 | 0.009 | 0.79 |
| M1 | 0.02 | 0.73 | M5 | 0.01 | 0.76 |
| M2 | 0.23 | 0.41 | M6 | 0.0004 | 0.91 |
| M3 | <0.001 | 0.97 | M7 | 0.0008 | 0.90 |

Mean waves proportions (delta Right (R), theta R, alpha R, beta R, gamma R, delta Left (L), theta L, alpha L, beta L, gamma L) recorded for the first and second session were correlated per horse. Significant values are in bold.

<https://doi.org/10.1371/journal.pone.0243970.t003>

considering that only two stallions were included in the population. Indeed, they can not be grouped with geldings since they can behave differently.

All statistics were performed with R v. 3.5.0 (The R foundation for statistical computing, <http://www.r-project.org/>).

Results

In accordance with a previous study [31], we found that the horses had highly consistent individual EEG profiles over time with 11 horses showing high ($0.64 \leq r \leq 0.74$) and two moderate ($0.52 \leq r \leq 0.57$) correlations in their individual EEG profiles (proportion of each wave type in each hemisphere) over the two sessions (Table 3). Only two horses showed a lower correlation. Three horses (S2, S4, G4) were not tested at the second session for practical reasons. For further analysis and to enhance conformity in measures between horses, only recordings from the first session were thus kept for the subsequent analysis.

EEG activities recorded for the 18 horses during the first session are shown Table 4.

EEG activity was characterized by more theta waves (Mann Whitney test, $W = 70$, $p = 0.007$) and less beta waves ($W = 8$, $p = 0.002$) in the Left Hemisphere (LH) in horses with a round neck ($N = 9$) compared to horses with a hollow/flat neck ($N = 9$) (Fig 2).

Through practitioner examination and sEMG evaluations, Lesimple et al. [22] have shown that muscular tensions in different parts of the spine were associated with a hollow or flat neck. This was confirmed here since horses with a round neck had a higher number of vertebral sites with less than $1\mu\text{V}$ (*i.e.* vertebrae not affected) than horses with a hollow/flat neck (Mann-Whitney test, $N = 13$, $W = 32.5$, $p = 0.05$). Thus, it appears that the healthier horses with a round neck produced more theta waves. No difference was found in the right hemisphere nor for any other frequency bands.

Table 4. EEG activity recorded over the first session on the 18 horses.

| EEG wave activity (median proportions, %) | Delta (LH) | Theta (LH) | Alpha (LH) | Beta (LH) | Gamma (LH) | Delta (RH) | Theta (RH) | Alpha (RH) | Beta (RH) | Gamma (RH) |
|---|------------|------------|------------|-----------|------------|------------|------------|------------|-----------|------------|
| Min | 0.03 | 4.2 | 2.6 | 10.6 | 3.7 | 0.1 | 6.7 | 3.4 | 8 | 5.3 |
| Max | 28.5 | 59.1 | 19.3 | 52.6 | 46 | 27 | 67.1 | 20.4 | 44.4 | 40.7 |
| μ | 6.6 | 23.5 | 9.6 | 30.9 | 23.7 | 4.9 | 32.4 | 10.6 | 27.4 | 20.1 |
| sd | 8 | 12.9 | 3.9 | 10.2 | 12.4 | 7.7 | 17 | 4.3 | 10 | 10.9 |

<https://doi.org/10.1371/journal.pone.0243970.t004>

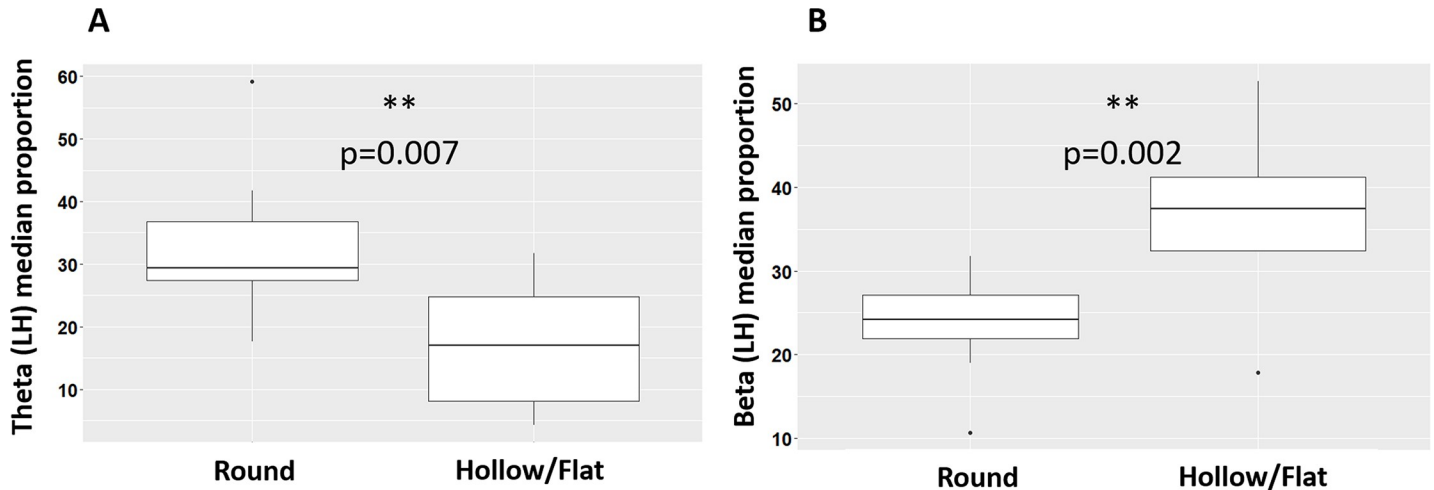


Fig 2. Relation between EEG power profile and postural indicators of spine state: median theta (A) and beta (B) proportion recorded in the left hemisphere according to the horse’s neck shape (as measured following Lesimple et al [22]’s method). Mann-Whitney test. *** $p < 0.001$; ** $p < 0.01$; * $p < 0.05$.

<https://doi.org/10.1371/journal.pone.0243970.g002>

This relation between spine state and EEG power profiles was further and still more convincingly confirmed by the sEMG data obtained from 13 horses (Fig 3).

In both hemispheres, the median value of the spine muscular activity was negatively correlated with theta and, like the median asymmetry, positively correlated with beta and gamma relative frequencies. Thus, the more muscular tensions and asymmetry along the spine, the higher the beta and gamma activity and the lower the theta activity. This was still more so when only the left hemisphere was considered with less slow (theta and alpha) and more fast (beta and gamma) waves activity when the asymmetry was higher.

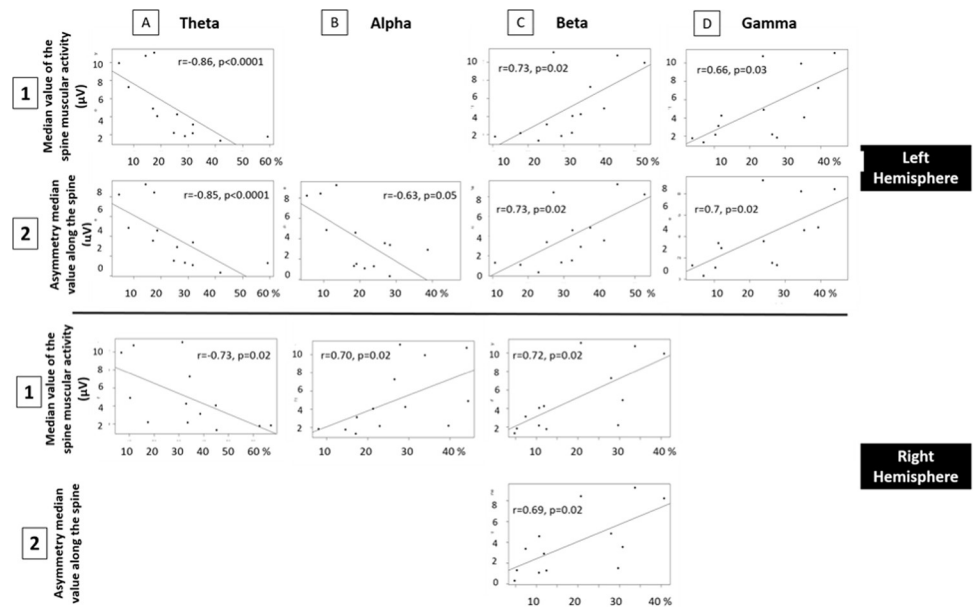


Fig 3. Correlations between the proportions of the different waves in the quantitative resting- state EEG in each hemisphere and sEMG measures along the spine. 1 median value of the spine muscular activity; 2 the asymmetry median value along the spine. Only significant correlations are shown.

<https://doi.org/10.1371/journal.pone.0243970.g003>

Finally, these findings were reflected at the level of the precise spine sites, as in all cases, more muscular tension was reflected by more fast waves and less slow waves. The correlations were particularly clear at the level of T3, a particular vertebral site where the two muscle fascia responsible for head/neck movements join and at S1, the sacral area (Fig 4).

It is worth noting that no correlations were observed between either sEMG or EEG measures and the horse's age (Spearman correlation, $-0.18 < r < 0.57$; $p > 0.05$).

The muscular tension along the spine (*i.e.* sEMG median value) was also correlated with the number of stereotypic behaviours performed per hour in their home environment ($N = 13$, N Spearman test, $r_s = 0.67$, $p = 0.01$). Thus, the more tension along the spine, the more the horses may have tried to cope with the suggested associated pain [18, 25, 32]. Moreover, the EEG measures indicated that the more stereotypic the horse was, the less theta waves were recorded in its left hemisphere ($N = 13$, $r_s = -0.58$, $p = 0.05$) as there were correlations between the measures of muscular activity along the spine and theta waves. Interestingly the correlation between muscular activity along the spine and stereotypic behaviours was maintained when only motor stereotypies ($r_s = 0.67$, $p = 0.01$) were considered. It was not possible to test the correlation for oral stereotypies as only three horses performed these behaviours. Similarly, the lower the number of motor stereotypic behaviours the higher theta proportion in the left hemisphere ($r_s = -0.59$, $p = 0.04$), confirming the close relationship between physical disorders and brain production.

Discussion

The clear correlations observed here between muscular activity along the spine, its asymmetry, neck shape alterations and increased fast (beta and gamma) waves, suggest strongly the

| A | C1 | C3 | C5 | C7 | T1 | T3 | T5 | T7 | T10 | T12 | L4 | S1 |
|----------|----|--------------------------|--------------------------|--------------------------|--------------------------|----------------------------|----|--------------------------|-----|-----|----|--------------------------|
| Delta LH | | | | | | | | $r = -0.71$; $p = 0.04$ | | | | |
| Theta LH | | $r = -0.72$; $p = 0.04$ | $r = -0.68$; $p = 0.05$ | | | $r = -0.88$; $p < 0.0001$ | | $r = -0.70$; $p = 0.04$ | | | | $r = -0.80$; $p = 0.02$ |
| Alpha LH | | | | | | | | | | | | |
| Beta LH | | | | | | $r = 0.82$; $p = 0.01$ | | | | | | $r = 0.70$; $p = 0.04$ |
| Gamma LH | | | | | | | | | | | | |
| Delta RH | | | | | | | | | | | | |
| Theta RH | | | $r = -0.71$; $p = 0.04$ | $r = -0.72$; $p = 0.04$ | | $r = -0.72$; $p = 0.04$ | | | | | | |
| Alpha RH | | | | | $r = -0.69$; $p = 0.04$ | | | | | | | |
| Beta RH | | | | $r = 0.68$; $p = 0.05$ | | $r = 0.73$; $p = 0.04$ | | | | | | $r = 0.69$; $p = 0.05$ |
| Gamma RH | | $r = 0.76$; $p = 0.03$ | | | | $r = 0.83$; $p = 0.01$ | | | | | | $r = 0.75$; $p = 0.03$ |

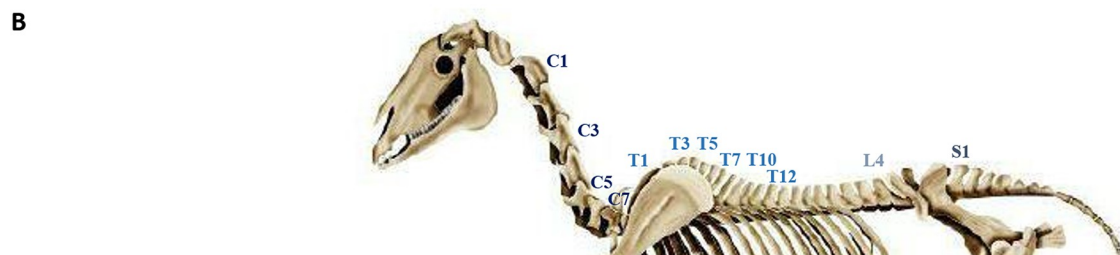


Fig 4. Relationship between resting state EEG power profile and sEMG measures at different sites along the horse's spine. (A) Correlations between the proportion of each wave type in the left (LH) or right (RH) hemisphere and sEMG measures at each spine site; (B) representation of the different sEMG recording sites along the spine (C = cervical, T = thoracic, S = sacral).

<https://doi.org/10.1371/journal.pone.0243970.g004>

involvement of fast waves in the processing of spontaneous chronic pain in this species. This involvement of fast waves is concordant with the finding that massage therapy suppresses the beta rhythm in low back pain human patients [48] and with the association between ongoing pain intensity and amplitude of beta and gamma waves in patients suffering chronic back pain [4]. The fact that horses presenting higher frequency bands in their resting state (*i.e.* quiet standing) EEG were also performing more stereotypic behaviours indirectly confirms that these horses were experiencing a painful condition, as they were, like humans experiencing chronic pain, performing an “addictive” behaviour [1]. The presence of fast waves might indicate that they may not be able to experience real quiet states, maybe because of a persistent pain. In contrast, healthier horses presented more theta waves, which also confirm the major interest of theta waves when considering quantitative EEG. However, recent studies found an increased power amplitude in theta in patients with neurogenic pain and in rodents experimentally subjected to chronic constriction injury [3]. This may be due to the type of pain, as neurogenic pain may be involving a more noxious/subacute component than chronic back pain, potentially involving a more emotional component [1], in which case it would be important to look for different biomarkers (*i.e.* neurophysiological components obtained through neuroimaging [49] according to the source of pain. One other explanation could be in the measures of the noxious stimuli applied (objective aspect) versus the perceived (by the individual) pain as opposed patterns in the predominant types of frequency bands, with fast waves being positively correlated to ongoing and chronic subjective pain, assessed by human subjects [4, 7, 8]. Slow waves and in particular theta have otherwise been associated with reduced anxiety [5], positive and calm emotions [50] and attention [51]. Chronic pain is associated with negative affect and lowered attentional engagement both in humans [52] and animals [23, 53]. Horses with a healthier back exhibit more positive behaviours towards an experimenter [17, 25]. Taken together, all these aspects suggest that a lowered theta power may reveal the subjective perception of spontaneous chronic pain by horses. The correlation between the theta versus beta waves and the muscular activity measures at the different levels of spine reinforces this association between EEG power profile and back tension, especially as the clearest correlations were at T3, a thoracic vertebral site often involved with vertebral problems such as overlap of dorsal spinuous processes [19] and central for the head-neck positioning. However, our study confirms once again that age has a low impact on horse welfare and pain [54].

Although correlations between muscular tension along the spine and EEG activity were observed regarding brain production both in the right and left hemispheres, a particular association was noticed between horses’ back health and the left hemisphere activity. Indeed, horses which showed higher production of theta waves in the left hemisphere were those that had more a round neck and performed less stereotypic behaviours per hour. It is probable that these horses, which do not experience back pain, have also a more positive assessment of their life conditions, which would be in accordance with the known particular involvement of the left hemisphere for positive processing [55–57].

These results are all the more remarkable as they rely upon short recordings and thus suggest that EEG power profiles could be of major interest for assessing the current animal’s subjective state beyond the objective measure of back tension. In order for this tool to be used more widely, recording conditions (*i.e.* the closer to the horse’s home environment) and durations (*i.e.* longer recordings according to questions) still need to be refined, but these findings open new lines of research in the comparative study of back disorders, the potential chronic pain associated and its impact on cognitive functions. Studies on a large panel of species would be an important way of clarifying these issues and promising useful tools.

Supporting information

S1 File.
(XLSX)

Acknowledgments

The authors are grateful to M. S. Gicqueaux and the riding school staff for allowing access to the riding school horses and for their help.

Author Contributions

Conceptualization: Mathilde Stomp, Séverine Henry, Hugo Cousillas, Martine Hausberger.

Formal analysis: Serenella d’Ingeo, Clémence Lesimple, Hugo Cousillas, Martine Hausberger.

Funding acquisition: Séverine Henry, Martine Hausberger.

Investigation: Mathilde Stomp, Serenella d’Ingeo, Clémence Lesimple.

Methodology: Mathilde Stomp, Serenella d’Ingeo, Séverine Henry, Hugo Cousillas, Martine Hausberger.

Supervision: Séverine Henry, Hugo Cousillas, Martine Hausberger.

Validation: Mathilde Stomp, Séverine Henry, Hugo Cousillas, Martine Hausberger.

Writing – original draft: Mathilde Stomp, Hugo Cousillas, Martine Hausberger.

Writing – review & editing: Mathilde Stomp, Séverine Henry, Hugo Cousillas, Martine Hausberger.

References

1. Reddan MC, Wager TD. Brain systems at the intersection of chronic pain and self-regulation. Vol. 702, *Neuroscience Letters*. Elsevier Ireland Ltd; 2019. p. 24–33. <https://doi.org/10.1016/j.neulet.2018.11.047> PMID: 30503923
2. Levitt J, Saab CY. What does a pain ‘biomarker’ mean and can a machine be taught to measure pain? Vol. 702, *Neuroscience Letters*. Elsevier Ireland Ltd; 2019. p. 40–3. <https://doi.org/10.1016/j.neulet.2018.11.038> PMID: 30503919
3. Koyama S, LeBlanc BW, Smith KA, Roach C, Levitt J, Edhi MM, et al. An electroencephalography bioassay for preclinical testing of analgesic efficacy. *Sci Rep*. 2018 Dec 1; 8(1). <https://doi.org/10.1038/s41598-018-34594-2> PMID: 30401974
4. May ES, Nickel MM, Ta Dinh S, Tiemann L, Heitmann H, Voth I, et al. Prefrontal gamma oscillations reflect ongoing pain intensity in chronic back pain patients. *Hum Brain Mapp* [Internet]. 2019 Jan 10 [cited 2020 Jan 3]; 40(1):293–305. Available from: <https://onlinelibrary.wiley.com/doi/abs/10.1002/hbm.24373> PMID: 30260531
5. Putman P, van Peer J, Maimari I, van der Werff S. EEG theta/beta ratio in relation to fear-modulated response-inhibition, attentional control, and affective traits. *Biol Psychol* [Internet]. 2010 Feb 1 [cited 2018 Sep 15]; 83(2):73–8. Available from: <https://www.sciencedirect.com/science/article/pii/S0301051109002269> <https://doi.org/10.1016/j.biopsycho.2009.10.008> PMID: 19897008
6. Hughes JR, Roy John E. *Conventional and Quantitative Electroencephalography in Psychiatry*. Vol. 11, *The Journal of Neuropsychiatry and Clinical Neurosciences*. 1999.
7. Nickel MM, May ES, Tiemann L, Schmidt P, Postorino M, Ta Dinh S, et al. Brain oscillations differentially encode noxious stimulus intensity and pain intensity. *Neuroimage*. 2017 Mar 1; 148:141–7. <https://doi.org/10.1016/j.neuroimage.2017.01.011> PMID: 28069543
8. Schulz E, May ES, Postorino M, Tiemann L, Nickel MM, Witkovsky V, et al. Prefrontal Gamma Oscillations Encode Tonic Pain in Humans. *Cereb Cortex* [Internet]. 2015 Nov [cited 2020 Jan 3]; 25(11):4407–14. Available from: <https://academic.oup.com/cercor/article-lookup/doi/10.1093/cercor/bhv043> PMID: 25754338

9. Ong R, Morris J, O'Dwyer J, Barnett J, Hemsworth P, Clarke I. Behavioural and EEG changes in sheep in response to painful acute electrical stimuli. *Aust Vet J* [Internet]. 1997 Mar 1 [cited 2020 Oct 22]; 75(3):189–93. Available from: <http://doi.wiley.com/10.1111/j.1751-0813.1997.tb10064.x> PMID: 9088510
10. Harris C, White PJ, Mohler VL, Lomax S. Electroencephalography can distinguish between pain and anaesthetic intervention in conscious lambs undergoing castration. *Animals* [Internet]. 2020 Mar 4 [cited 2020 Oct 22]; 10(3):428. Available from: <https://www.mdpi.com/2076-2615/10/3/428>
11. Johnson C, Gibson T, Stafford K, Mellor D. Pain perception at slaughter. *Anim Welf* [Internet]. 2012 [cited 2020 Oct 22]; 21(S2):113–22. Available from: <https://www.researchgate.net/publication/263077644>
12. Murrell JC, Johnson CB, White KL, Taylor PM, Haberham ZL, Waterman-Pearson AE. Changes in the EEG during castration in horses and ponies anaesthetized with halothane. *Vet Anaesth Analg*. 2003 Jul 1; 30(3):138–46. <https://doi.org/10.1046/j.1467-2995.2003.00138.x> PMID: 14498845
13. Jeffcott LB. Back problems in the horse—A look at past, present and future progress. *Equine Vet J*. 1979 Jul 1; 11(3):129–36. <https://doi.org/10.1111/j.2042-3306.1979.tb01324.x> PMID: 158523
14. Jeffcott LB. Disorders of the thoracolumbar spine of the horse—a survey of 443 cases. *Equine Vet J* [Internet]. 1980 Oct [cited 2020 Jan 3]; 12(4):197–210. Available from: <http://doi.wiley.com/10.1111/j.2042-3306.1980.tb03427.x> PMID: 7439145
15. Fonseca BPA, Alves ALG, Nicoletti JLM, Thomassian A, Hussni CA, Mikail S. Thermography and ultrasonography in back pain diagnosis of equine athletes. *J Equine Vet Sci*. 2006 Nov; 26(11):507–16.
16. Visser EK, Neijenhuis F, de Graaf-Roelfsema E, Wesselink HGM, de Boer J, van Wijhe-Kiezebrink MC, et al. Risk factors associated with health disorders in sport and leisure horses in the Netherlands1. *J Anim Sci* [Internet]. 2014 Feb 1 [cited 2019 Feb 18]; 92(2):844–55. Available from: <https://academic.oup.com/jas/article/92/2/844/4702625> PMID: 24352963
17. Fureix C, Menguy H, Hausberger M. Partners with bad temper: reject or cure? A study of chronic pain and aggression in horses. Giurfa M, editor. *PLoS One* [Internet]. 2010 Aug 26 [cited 2018 Jan 2]; 5(8):e12434. Available from: <http://dx.plos.org/10.1371/journal.pone.0012434> PMID: 20865160
18. Lesimple C, Fureix C, Aubé L, Hausberger M. Detecting and measuring back disorders in nonverbal individuals: the example of domestic horses. *Anim Behav Cogn* [Internet]. 2016 [cited 2018 Jan 2]; 3(3):159–79. Available from: https://www.researchgate.net/profile/Clemence_Lesimple/publication/307967174_Detecting_and_Measuring_Back_Disorders_in_Nonverbal_Individuals_The_Example_of_Domestic_Horses/links/57d42ccd08ae601b39a8a5c9.pdf
19. Haussler KK. The lower back and pelvis of performance horses receive a closer look. *J Equine Vet Sci* [Internet]. 1996 Jul 1 [cited 2018 May 3]; 16(7):279–81. Available from: <http://linkinghub.elsevier.com/retrieve/pii/S0737080696802206>
20. Stubbs NC, Hodges PW, Jeffcott LB, Cowin G, Hodgson DR, McGowan CM. Functional anatomy of the caudal thoracolumbar and lumbosacral spine in the horse. *Equine Vet J* [Internet]. 2006 Aug [cited 2020 Jan 3]; 38(S36):393–9. Available from: <http://doi.wiley.com/10.1111/j.2042-3306.2006.tb05575.x>
21. Fureix C, Hausberger M, Seneque E, Morisset S, Baylac M, Cornette R, et al. Geometric morphometrics as a tool for improving the comparative study of behavioural postures. *Naturwissenschaften*. 2011; 98(7):583. <https://doi.org/10.1007/s00114-011-0803-2> PMID: 21573691
22. Lesimple C, Fureix C, De Margerie E, Sénèque E, Menguy H, Hausberger M. Towards a postural indicator of back pain in horses (*Equus caballus*). *PLoS One*. 2012 Sep 7; 7(9):e44604. <https://doi.org/10.1371/journal.pone.0044604> PMID: 22970261
23. Rochais C, Fureix C, Lesimple C, Hausberger M. Lower attention to daily environment: a novel cue for detecting chronic horses' back pain? *Sci Rep* [Internet]. 2016 Jan 29 [cited 2017 Dec 20]; 6:20117. Available from: <http://www.ncbi.nlm.nih.gov/pubmed/26823123> <https://doi.org/10.1038/srep20117> PMID: 26823123
24. Dyson S, Berger JM, Ellis AD, Mullard J. Behavioral observations and comparisons of nonlame horses and lame horses before and after resolution of lameness by diagnostic analgesia. *J Vet Behav* [Internet]. 2018 Jul 1 [cited 2018 Sep 23]; 26:64–70. Available from: <https://linkinghub.elsevier.com/retrieve/pii/S1558787818300170>
25. Hausberger M, Fureix C, Lesimple C. Detecting horses' sickness: in search of visible signs. *Appl Anim Behav Sci* [Internet]. 2016 Feb 1 [cited 2017 Dec 20]; 175:41–9. Available from: <http://www.sciencedirect.com/science/article/pii/S0168159115002622>
26. Arena JG, Sherman RA, Bruno GM, Young TR. Electromyographic recordings of 5 types of low back pain subjects and non-pain controls in different positions. *Pain*. 1989; 37(1):57–65. [https://doi.org/10.1016/0304-3959\(89\)90153-x](https://doi.org/10.1016/0304-3959(89)90153-x) PMID: 2524711
27. Arena JG, Sherman RA, Bruno GM, Young TR. Electromyographic recordings of low back pain subjects and non-pain controls in six different positions: effect of pain levels. *Pain*. 1991; 45(1):23–8. [https://doi.org/10.1016/0304-3959\(91\)90160-y](https://doi.org/10.1016/0304-3959(91)90160-y) PMID: 1830645

28. Greve L, Dyson SJ. The interrelationship of lameness, saddle slip and back shape in the general sports horse population. *Equine Vet J* [Internet]. 2014 Nov 1 [cited 2019 Feb 18]; 46(6):687–94. Available from: <https://doi.org/10.1111/evj.12222> PMID: 24372949
29. Cauvin E. Assessment of back pain in horses. *In Pract*. 1997 Nov; 19(10):522–33.
30. Haussler KK, Erb HN. Pressure algometry for the detection of induced back pain in horses: a preliminary study. *Equine Vet J* [Internet]. 2006 Jan 5 [cited 2020 Jan 3]; 38(1):76–81. Available from: <https://doi.org/10.2746/042516406775374225> PMID: 16411591
31. Cousillas H, Oger M, Rochais C, Pettoello C, Ménoret M, Henry S, et al. An ambulatory electroencephalography system for freely moving horses: an innovating approach. *Front Vet Sci* [Internet]. 2017 May 2 [cited 2018 May 4]; 4:57. Available from: <http://journal.frontiersin.org/article/10.3389/fvets.2017.00057/full> PMID: 28512633
32. Broom DM. Indicators of poor welfare. *Br Vet J*. 1986; 142(6):524–6. [https://doi.org/10.1016/0007-1935\(86\)90109-0](https://doi.org/10.1016/0007-1935(86)90109-0) PMID: 3594185
33. Wickens C. Investigating specific stereotypic behaviors in horses. Michigan State University, East Lansing; 2009.
34. Hausberger M, Gautier E, Biquand V, Lunel C, Jégo P. Could work be a source of behavioural disorders? A Study in horses. Soares D, editor. *PLoS One* [Internet]. 2009 Oct 28 [cited 2018 Mar 19]; 4(10): e7625. Available from: <http://dx.plos.org/10.1371/journal.pone.0007625> PMID: 19862328
35. Mills DS. Repetitive movement problems in the horse. In: *The domestic horse: the evolution, development and management of its behaviour*. Cambridge University Press; 2005. p. 212–27.
36. McGreevy PD, Cripps PJ, French NP, Green LE, Nicol CJ. Management factors associated with stereotypic and redirected behaviour in the Thoroughbred horse. *Equine Vet J* [Internet]. 1995 Mar 1 [cited 2018 Jan 2]; 27(2):86–91. Available from: <http://doi.wiley.com/10.1111/j.2042-3306.1995.tb03041.x> PMID: 7607155
37. Hausberger M, Gautier E, Müller C, Jégo P. Lower learning abilities in stereotypic horses. *Appl Anim Behav Sci* [Internet]. 2007 Nov 1 [cited 2017 Dec 20]; 107(3–4):299–306. Available from: <http://www.sciencedirect.com/science/article/pii/S016815910600339X>
38. Parker M, Redhead ES, Goodwin D, McBride SD. Impaired instrumental choice in crib-biting horses (*Equus caballus*). *Behav Brain Res* [Internet]. 2008 Aug 5 [cited 2018 May 3]; 191(1):137–40. Available from: <https://www.sciencedirect.com/science/article/pii/S0166432808001423> <https://doi.org/10.1016/j.bbr.2008.03.009> PMID: 18430476
39. Benhajali H, Ezzaouia M, Lunel C, Charfi F, Hausberger M. Stereotypic behaviours and mating success in domestic mares. *Appl Anim Behav Sci* [Internet]. 2014 Apr 1 [cited 2017 Dec 20]; 153:36–42. Available from: <http://www.sciencedirect.com/science/article/pii/S0168159114000033>
40. Rochais C, Sébilleau M, Menoret M, Oger M, Henry S, Hausberger M, et al. Attentional state and brain processes: state-dependent lateralization of EEG profiles in horses. *Sci Rep* [Internet]. 2018 Dec 5 [cited 2018 Jul 23]; 8(1):10153. Available from: <http://www.nature.com/articles/s41598-018-28334-9> <https://doi.org/10.1038/s41598-018-28334-9> PMID: 29976936
41. Hausberger M, Stomp M, Sankey C, Brajon S, Lunel C, Henry S. Mutual interactions between cognition and welfare: The horse as an animal model. *Neurosci Biobehav Rev*. 2019; <https://doi.org/10.1016/j.neubiorev.2019.08.022> PMID: 31491471
42. Rapin V, Poncet PA, Burger D, Mermod C, Hausberger M, Richard M-A. Mesure de la durée d'attention chez le cheval. *Schweiz Arch Tierheilkd* [Internet]. 2007 Feb 1 [cited 2018 Jul 25]; 149(2):77–83. Available from: <http://sat.gstsvs.ch/de/pubmed/?doi=10.1024/0036-7281.149.2.77> PMID: 17343134
43. Fureix C, Jégo P, Henry S, Lansade L, Hausberger M. Towards an ethological animal model of depression? A study on horses. Chapouthier G, editor. *PLoS One* [Internet]. 2012 Jun 28 [cited 2018 May 3]; 7(6):e39280. Available from: <http://dx.plos.org/10.1371/journal.pone.0039280> PMID: 22761752
44. Rochais C, Henry S, Hausberger M. Spontaneous attention-capture by auditory distractors as predictor of distractibility: a study of domestic horses (*Equus caballus*). *Sci Rep* [Internet]. 2017 Dec 10 [cited 2018 May 4]; 7(1):15283. Available from: <http://www.nature.com/articles/s41598-017-15654-5> <https://doi.org/10.1038/s41598-017-15654-5> PMID: 29127367
45. Kujala M V., Törnqvist H, Somppi S, Hänninen L, Krause CM, Vainio O, et al. Reactivity of dogs' brain oscillations to visual stimuli measured with non-invasive electroencephalography. *PLoS One*. 2013; 8(5):1–8. <https://doi.org/10.1371/journal.pone.0061818> PMID: 23650504
46. Shearar KA, Colloca CJ, White HL. A randomized clinical trial of manual versus mechanical force manipulation in the treatment of sacroiliac joint syndrome. *J Manipulative Physiol Ther* [Internet]. 2005 Sep 1 [cited 2019 Mar 13]; 28(7):493–501. Available from: <https://www.sciencedirect.com/science/article/pii/S0161475405001843> <https://doi.org/10.1016/j.jmpt.2005.07.006> PMID: 16182023

47. Siegel S, Castellan J. Nonparametric statistics for the behavioral sciences. 2nd ed. New York: McGraw-Hill international; 1988.
48. Xiangjun S, Li H, Du W, Chen W, Zhou F, Wang L. Analysis of Electroencephalogram of patients with specific low back pain with the massage treatment. In: Proceedings of the Annual International Conference of the IEEE Engineering in Medicine and Biology Society, EMBS. Institute of Electrical and Electronics Engineers Inc.; 2017. p. 479–83.
49. Reddan MC, Wager TD. Modeling Pain Using fMRI: From Regions to Biomarkers [Internet]. Vol. 34, Neuroscience Bulletin. Springer; 2018 [cited 2020 Oct 13]. p. 208–15. Available from: /pmc/articles/PMC5799128/?report=abstract <https://doi.org/10.1007/s12264-017-0150-1> PMID: 28646349
50. Aftanas LI, Golocheikine SA. Human anterior and frontal midline theta and lower alpha reflect emotionally positive state and internalized attention: high-resolution EEG investigation of meditation. *Neurosci Lett* [Internet]. 2001 Sep 7 [cited 2018 Sep 15]; 310(1):57–60. Available from: <https://www.sciencedirect.com/science/article/abs/pii/S0304394001020948> [https://doi.org/10.1016/s0304-3940\(01\)02094-8](https://doi.org/10.1016/s0304-3940(01)02094-8) PMID: 11524157
51. Başar E, Başar-Eroglu C, Karakaş S, Schürmann M. Gamma, alpha, delta, and theta oscillations govern cognitive processes. *Int J Psychophysiol* [Internet]. 2001 Jan 1 [cited 2018 Sep 27]; 39(2–3):241–8. Available from: <https://www.sciencedirect.com/science/article/pii/S016787600001458> [https://doi.org/10.1016/s0167-8760\(00\)00145-8](https://doi.org/10.1016/s0167-8760(00)00145-8) PMID: 11163901
52. Apkarian AV, Hashmi JA, Baliki MN. Pain and the brain: Specificity and plasticity of the brain in clinical chronic pain. Vol. 152, *Pain*. 2011. <https://doi.org/10.1016/j.pain.2010.11.010> PMID: 21146929
53. Dunnet S, Whishaw I, Jones G, Bunch S. Behavioural, biochemical and histochemical effects of different neurotoxic amino acids injected into nucleus basalis magnocellularis of rats. *Neuroscience*. 1987; 20:653–9. [https://doi.org/10.1016/0306-4522\(87\)90117-5](https://doi.org/10.1016/0306-4522(87)90117-5) PMID: 3295586
54. Lesimple C, Poissonnet A, Hausberger M. How to keep your horse safe? An epidemiological study about management practices. *Appl Anim Behav Sci* [Internet]. 2016 Aug 1 [cited 2017 Dec 20]; 181:105–14. Available from: <http://www.sciencedirect.com/science/article/pii/S0168159116301046>
55. Davidson RJ. Emotion and Affective Style: Hemispheric Substrates. *Psychol Sci* [Internet]. 1992 Jan 25 [cited 2018 May 4]; 3(1):39–43. Available from: <http://journals.sagepub.com/doi/10.1111/j.1467-9280.1992.tb00254.x>
56. Basile M, Boivin S, Boutin A, Blois-Heulin C, Hausberger M, Lemasson A. Socially dependent auditory laterality in domestic horses (*Equus caballus*). *Anim Cogn* [Internet]. 2009 [cited 2018 May 2]; 12(4):611–9. Available from: https://www.researchgate.net/profile/Martine_Hausberger/publication/24198199_Socially_dependent_auditory_laterality_in_domestic_horses_Equus_caballus/links/53d3bfe20cf2a7fbb2e9ec48.pdf <https://doi.org/10.1007/s10071-009-0220-5> PMID: 19283416
57. Andrew R, Rogers L. The nature of lateralization in tetrapods. In: *Comparative Vertebrate Lateralization*. 2002. p. 94–127.