



HAL
open science

Solitary versus group living lifestyles, social group composition and cooperation in otters

Thierry Lodé, Marie-Loup Lélias, Alban Lemasson, Catherine Blois-Heulin

► To cite this version:

Thierry Lodé, Marie-Loup Lélias, Alban Lemasson, Catherine Blois-Heulin. Solitary versus group living lifestyles, social group composition and cooperation in otters. *Mammal Research*, 2021, 66 (1), pp.13-31. 10.1007/s13364-020-00536-5 . hal-02950722

HAL Id: hal-02950722

<https://univ-rennes.hal.science/hal-02950722v1>

Submitted on 1 Oct 2020

HAL is a multi-disciplinary open access archive for the deposit and dissemination of scientific research documents, whether they are published or not. The documents may come from teaching and research institutions in France or abroad, or from public or private research centers.

L'archive ouverte pluridisciplinaire **HAL**, est destinée au dépôt et à la diffusion de documents scientifiques de niveau recherche, publiés ou non, émanant des établissements d'enseignement et de recherche français ou étrangers, des laboratoires publics ou privés.

Thierry Lodé, Marie-Loup Lélias, Alban Lemasson, Catherine Blois-Heulin.
Solitary versus group living lifestyles, social group composition and
cooperation in otters. Mammal Research, 2020, <10.1007/s13364-020-
00536-5>. <hal-02950722>

Authors' post-print

Editor's version available at the following:

<https://doi.org/10.1007/s13364-020-00536-5>



1 Solitary versus group-living lifestyles, social 2 group composition and cooperation in otters

3 Thierry LODÉ, *UMR CNRS 6552 ETHOS, University of Rennes 1, 35042 Rennes,*
4 *France*

5 thierry.lode@univ-rennes1.fr (corresponding author)

6 Marie-Loup LÉLIAS, *LPPL, UPRES EA 4638, Université d'Angers, 49045 Angers*
7 *Cedex 01. France*

8 Alban LEMASSON, *Institut Universitaire de France & UMR CNRS 6552 ETHOS,*
9 *University of Rennes 1, Station biologique de Paimpont, 35380, Paimpont, France*

10 & Catherine BLOIS-HEULIN, *UMR CNRS 6552 ETHOS, University of Rennes 1, Station*
11 *biologique de Paimpont, 35380, Paimpont, France.*



22 Small-clawed otters (*Aonyx cinereus*) (Photo Thierry Lodé).

23

24

25 **ABSTRACT**

26 Increased reproduction success, enhanced foraging and reduced predation risk are
27 usually regarded as major factors favouring the evolution of social behaviour. Here
28 we formulate a series of hypotheses relating sexual, ecological and behavioural
29 factors to evaluate their explanatory value for 13 extant otter species, estimating the
30 extent to which each factor contributes to the sociality of each species. We also
31 compare individual behaviours within some of the species. Four otter species are
32 obligatory social; four are obligatory solitary; five present both types of social
33 organization. Social organizations of otter species are not related to their
34 phylogenetic relationships. However, many otter species exhibit intra-species
35 patterns of flexible social lifestyles. Both solitary and social otters adjust their social
36 patterns in response chiefly to food availability, but also to habitat features and
37 competition.

38 Group living is more common when intraspecific competition is reduced or trophic
39 resources replenish rapidly. Under these circumstances, group members often
40 forage individually. When otters forage individually, they often switch prey type when
41 they compete with other conspecifics. Social structures of otters fall into seven types:
42 1) family groups; 2) extended family groups, often with an alpha dominant pair; 3)
43 highly social groups with helpers; 4) collective hunting groups; 5) solitary life-style; 6)
44 unstable mixed-sex groups; and 7) single-sex bachelor groups. When an individual of
45 a species with variable sociality adopts one type of sociality, this may be only
46 temporary. Variations in social life are actually based on a series of events that
47 induce individuals to make decisions taking ecological factors into account.

48 Although ontogenetic factors can influence delayed dispersal of otters, social
49 factors rather than ecological factors could play an important role in the formation of
50 groups, and cohesiveness and kinship appear to be secondary effects of reduced

51 dispersal more than primary causes for living in a group. Appropriate adjustment of
52 group behaviour reduces the cost of sociality because individuals avoid social
53 interactions when benefits are low but gather together when group-living provides
54 real advantages. Although any one model is unlikely to explicate all facets of
55 sociality, evolution towards a social group results mainly from interactions within a
56 family.

57

58 **Keywords** cooperation, delayed dispersal, kin selection, parental care, reproductive
59 skew

60 .

Author's post-print

61 INTRODUCTION

62 Despite decades of research focusing on social and cooperative animals, many
63 questions concerning the evolution of group-living systems are still unresolved (Axelrod
64 1984, Pennisi 2005). How are group-living benefits to be understood in the context of
65 Darwinian competition for survival? Simply, group living is theorized to evolve when
66 fitness benefits obtained by one individual within a group outweigh the costs of sharing
67 key resources with conspecifics (Koenig et al. 1992; Cockburn 1998; Hatchwell and
68 Komdeur 2000; Macdonald and Carr 1989; Bacon et al. 1991a, b; Johnson et al. 2000;
69 Johnson et al. 2002b) and/or when there are strong ecological constraints on
70 independent reproduction (Von Schantz 1984b; Lindström 1986; Hatchwell and
71 Komdeur 2000). During the last few decades, this question has been debated within a
72 diversity of theoretical frameworks (see West et al. 2007), but attention has focused
73 especially on some highly social species.

74 Numerous advantages have been listed to explain why animals live in social
75 groups. Increased reproduction success, enhanced foraging success and reduced
76 predation risk are usually regarded as the major factors affecting the evolution of social
77 behaviour (Hamilton 1964, Alexander 1974, Clutton-Brock 2002, Clutton-Brock et al. 2001).
78 Nonetheless, these potential benefits can be broadly offset by costs linked to
79 promiscuity resulting from living in groups, and natural selection should favour non-
80 cooperative selfish individuals (Creel 1997, West et al. 2002, Couzin 2006). Social
81 animals face higher risks of disease and parasitism (Drewe 2009). Large groups are
82 more susceptible to be detected by predators and put greater pressure on trophic
83 resources leading to unequal delivery of food and increasing aggression among animals
84 (Clutton-Brock et al. 2001, Krause and Ruxton 2002, Brewer 2008). Living in a social
85 group could also lead to inbreeding or aggressive competition to find a mate and to
86 raise young and infanticide between competing mothers. Finally, from an evolutionary

87 point of view, why non-breeding individuals tolerate group-living and even help breeding
88 conspecifics remains one of the most relevant questions (see Kokko and Johnstone
89 1999).

90 Although authors usually distinguish three aspects of social systems: social
91 structure, care and mating systems, the need has emerged recently to differentiate
92 between social structure, structural aspects of interactions within a society, and social
93 organization, size and composition of the social unit (Prox and Farine, 2020). In fact,
94 animal species exhibit a large diversity of social systems, social organisation and group-
95 living structure can vary within a zoological taxon (Reiczigel et al. 2008). For example,
96 the social organizations of numerous species of otters vary considerably from solitary
97 life (*Lutra lutra*, Kruuk and Moorhouse 1991, *Lontra longicaudis*, Rheingantz et al.
98 2017), to monogamous pairs (*Lontra felina*, Ostfeld et al. 1989), or extended family
99 groups (*Pteronura brasiliensis*, Duplaix 1980, Ribas et al. 2016, Schmelz et al. 2017)
100 and sometimes groups of males (*Aonyx capensis*, Arden-Clarke 1986; *Lontra*
101 *canadensis*, Blundell et al. 2002a) (Table 1). Nevertheless, otters of the monophyletic
102 subfamily Lutrinae (Bininda-Emonds et al. 1999, Koepfli and Wayne 1998, Koepfli et
103 al. 2008) reveal morphological similarities and present comparable amphibious habits
104 and ecological requirements (Mason and Macdonald 1986, Kruuk 2006, Raha and
105 Hussain 2016). Otters exhibit an elaborate range of societies and the combination of
106 variable mating systems, social organizations and ecological and social characteristics
107 provides a rare opportunity to analyse the importance of factors which could influence
108 otters' social habits. The way social groups are categorized could help unravel factors
109 arising from the environment or life histories (Prox and Farine 2020).

110 Here we formulated a series of hypotheses relating sexual, ecological and
111 behavioural factors. For each hypothesis, we explain first its theoretical foundation, then

112 we evaluate its explanatory value for 13 otter species, indicating the extent to which
113 each factor contributes to the sociality of each species.

114 Finally, by inspecting for parsimony among explanatory factors, we determine
115 whether otter sociality is the consequence of any single factor or a combination of
116 factors, across species. By focusing on the Lutrinae we hope to illustrate how
117 theoretical models could be applied to animals in order to discern future directions of the
118 social ecology paradigm.

119

120

121 **INTERSPECIFIC VARIATION OF SOCIALITY**

122

123 **Questioning advantages of kin group-living**

124 Sociality is theorized to evolve when the benefits of group living exceed the costs
125 (Axelrod 1984; Krause and Ruxton, 2002), but the role played by kinship in establishing
126 social bonds needs to be evaluated.

127 Analyses of costs and benefits of sociality have often been made using
128 Hamilton's rule on "Kin Selection" (Hamilton 1964). Kin selection favours the fitness of
129 relatives at the expense of one's own survival and reproduction. Usually, "altruistic"
130 behaviours are incorrectly called "cooperative" although they are not reciprocal and they
131 reduce individual reproduction success (Wilson 1990). While cooperative interactions
132 are supposed to be mutually beneficial, altruistic behaviours involve non-reproductive
133 subordinates helping dominant individuals during the breeding period. The introduction
134 of the "kin selection" concept stimulated fruitful research on group-living animals,
135 although relatedness among haplodiploid hymenoptera is higher than among other
136 animals (Foster et al. 2006). For instance, genetic relatedness seems to predict the
137 organization of social groups of dwarf mongooses *Helogale parvula* (Creel and Waser

138 1994), kinkajous *Poto flavus* (Kays et al. 2000) and wild African elephants *Loxodonta*
139 *africana* (Archie et al. 2006). Unsuccessful long-tailed tit (*Aegithalos caudatus*) breeders
140 can act as helpers in the nests of close kin when the chance of successful independent
141 reproduction is low (Hatchwell & Sharp 2006). Male lion coalitions tend to consist of
142 closely related individuals (Spong et al. 2002) and group-living females exhibit a high
143 relatedness favouring their counter-action against infanticide (Mosser and Packer
144 2009).

145 Kin-mediated philopatry and cooperation benefits have been reported for
146 numerous species. Assuming that the genes that promote altruistic behaviour favour
147 increased feeding efficiency for instance suggests that this drives to produce a strong
148 correlation between donor and recipient (Wilson 1990, Okasha 2002). Furthermore,
149 limited or delayed dispersal increase the opportunities to interact with kin, and this could
150 promote the evolution of cooperative breeding (Hamilton 1964). Nonetheless exploiting
151 a resource by kin may also dramatically increase competition thus reducing all the
152 benefits of cooperation.

153 Cooperative and altruistic kin-related behaviours could be maintained by other
154 factors even in closely related groups and individuals presumed to be non-helpers could
155 be cooperative (Komdeur 2006). Thus, the risk of predation considerably affects the
156 pattern and time-budget of feeding. Sentinel behaviour in cooperative groups has been
157 regarded as a form of altruistic anti-predator vigilance providing protection for the entire
158 group (Hailman 1994). The alarm calls of Belding's ground squirrels (*Spermophilus*
159 *beldingi*) indicate that sentinels alarm relatives and should be the result of kin selection
160 (Sherman 1977). While sentinels take the risk of vocalizing, other individuals can
161 increase time devoted to feeding (Manser 1999, 2001). Townsend et al. (2011) reported
162 that meerkats are less vigilant when exposed to specific calls indicating that an
163 individual has briefly scanned the surrounding environment for predators. Although the

164 function of sentinels assures a cooperative vigilance (Wright et al., 2001b) it could
165 emerge from individually selfish antipredatory behaviour (Blumstein 1999).

166 Whereas kin selection could underlie the evolution of some cooperatively
167 breeding societies, this body of theory can hardly explain why some closely related
168 species are not social while other species, exposed to similar ecological conditions,
169 exhibit a complex social life. Thus, the absence of relatedness over the whole genome
170 results in a strong selection for suppression of cooperative behaviour because the
171 supposed altruistic gene would be in conflict with genes elsewhere in the genome
172 (Grafen 2006, Helantera and Bargum 2007, West et al. 2007). Furthermore, when
173 dispersal is reduced competition among kin can affect reproduction and can reduce,
174 and even totally counteract, all kin-selected benefits for relatives (Griffin and West 2002,
175 West et al. 2002, Gardner and West 2006). Consequently, it seems that sociological
176 foundations prevail over purely kin factors.

177 It is often difficult to disentangle kin from non-kin mechanisms that promote
178 group-living (Keller 1997). The North American river otter lives in large groups in marine
179 environments (Rock et al. 1994; Larivière and Walton 1998) in habitats including
180 inshore complexity and less reduction of foraging opportunities in winter than on inland
181 lakes and rivers due to less freeze-up. Analysing the role of relatedness in these social
182 habits, Blundell et al. (2004) rejected the hypothesis that social groups of otters were kin
183 based. Group-living otters inhabiting coastal habitats included a group of individuals that
184 were not related, as well as some that were closely related and both sexes exhibited a
185 low probability of natal dispersal (Blundell et al. 2002b). Giant otters live in highly
186 cooperative groups but Ribas et al. (2016) reasoned that direct benefits, such as
187 alloparental care, and defence of high-quality home-ranges may have driven the
188 development of sociability in this species. Small-clawed otter (*Aonyx (Amblonyx)*
189 *cinereus*) groups are known to include unrelated juvenile adults (Foster-Turley 1992,

190 Furuya 1976). Kin recognition mechanisms of mustelids do not differ clearly from
191 specific recognition of familiar but unrelated conspecifics (Lodé 2008, Hansen et al.
192 2009). Oriental small-clawed female otters discriminated between familiar and
193 unfamiliar adult males based on their sound and odour (Lemasson et al. 2013). Indeed,
194 relatedness among group members of numerous carnivores can be high, especially
195 when dispersal is restricted (Creel and Waser 1994, Girman et al. 1997, Gompper et al.
196 1997, Clutton-Brock 2002). Kin-structured populations can occur in solitary species
197 when their dispersal is restricted, as in cooperative species (Shorey et al. 2000, Lodé
198 2001, Foerster et al. 2006, Wagner et al. 2007), thus indicating that kin selection is not a
199 necessary condition for cooperation to emerge. Indeed, collective hunting by otters does
200 not require association with kin (Blundell et al. 2002b, Schmelz et al. 2017), resulting in
201 no selection pressure for kin-based groups. Therefore, although kinship undoubtedly
202 promotes social tolerance, it could be argued that the kinship observed in some highly
203 social animals could be a secondary effect of reduced dispersal and colonial living
204 rather than a primary cause for group living when their natal territories can support food
205 requirements.

206

207 **Sociality and phylogeny**

208 Based on the phylogenetic relatedness within the taxon Lutrinae, we would expect to
209 identify fairly similar social phenotypes. Lutrine otters form a monophyletic family which
210 diverged from other mustelids about 20-25 million years ago (Koepfli and Wayne 1998),
211 but variations of sociality among species appears to be unrelated to their taxonomic
212 positions (Kruuk 2006). Thus, the social organizations of otters seem not to be
213 associated with phylogenetic relationships, as measured through super-tree
214 constructions (Bininda-Emonds et al. 1999, Koepfli et al. 2008) (Fig. 1). The social
215 structures, mating systems and behaviour of many otter species are not well known but

216 both the largest (the giant otter) and the smallest species (the small-clawed otter) are
217 reported to develop strong social interactions (Kruuk 2006). Two species of the genus
218 *Lontra* remain strictly solitary, while two other species apparently can adopt a more
219 social behaviour depending on the circumstances. Indeed, otters seem to exhibit very
220 variable social patterns: social, flexible and solitary.

221 While marine otters (*Lontra felina*) or spotted-necked otters (*Lutra (Hydrictis)*
222 *maculicollis*) often exhibit solitary habits (Lejeune 1989, Angelici 2005), these species
223 can live in small family groups in numerous occasions (Ostfeld et al. 1989, Kruuk &
224 Goudswaard 1990, Medina-Vogel et al. 2006). In contrast, both southern river otters
225 (*Lontra provocax*) (Larivière 1999, Sepúlveda et al. 2007), hairy-nosed otters (*Lutra*
226 *sumatrana*) (Sivasothi and Nor 1994, Nguyen et al. 2001; Nguyen 2005,
227 Kanchanasakha 2007) and Neotropical river otters (*Lontra longicaudis*) (Helder and
228 DeAndrade 1997, Kasper et al. 2008, Rheingantz et al. 2011, Rheingantz et al. 2017)
229 are mainly solitary, whereas North American river otters (*Lontra canadensis*) (Melquist
230 & Hornocker 1983, Rock et al. 1994, Larivière & Walton 1998, Blundell et al. 2004) and
231 European otters (*Lutra lutra*) have both solitary and social habits (Mason & Macdonald
232 1986, Kruuk & Morhouse 1991). Smooth-coated otters (*Lutrogale persipicillata*) can live
233 in small family groups (Foster-Turley 1992, Sivasothi & Nor 1994, Hussain 1996, Khan
234 et al. 2010). Congo clawless otters (*Aonyx congicus*) privilege solitary habits (Larivière
235 2001, Jacques et al. 2009), whereas African clawless otters (*Aonyx capensis*) (Arden-
236 Clarke 1986, Ostfeld et al. 1989, Creel & Mcdonald 1995) and small-clawed otters
237 (*Aonyx (Amblonyx) cinereus*), often have social habits (Furuya 1976, Foster-Turley
238 1992, Hussain et al. 2011). Finally, giant otters (*Pteronura brasiliensis*) (Duplaix 1980,
239 Carter and Rosas 1997, Leuchtenberger and Mourão 2008) and sea otters (*Enhydra*
240 *lutris*) (Garshelis et al. 1984, McShane et al. 1995) are highly social.

241 Socially, otter species therefore have less in common with other species of the
242 same genus than they have with other less closely related phylogenetically otter species
243 (Kruuk 2006). This suggests that otters' social life style does not depend on genetic
244 relatedness.

245

246 **Group-living and dispersal**

247 We questioned whether social life style could depend on factors delaying dispersal of
248 juveniles. Limited dispersal can indeed engender a relatively high level of relatedness
249 among populations. Kin-patterns could be a by-product of dispersal patterns as similar
250 patterns are observed in solitary species. Koenig et al.'s (1992) "Delayed-Dispersal
251 Threshold Model" proposed that delayed dispersal could be one of the most important
252 processes of social life because it generates kin-structured groups without requiring any
253 kin discrimination mechanism. This hypothesis thus clearly predicts that breeding
254 dispersal will be lower in cooperative species than in non-cooperative species.

255 Could dispersal of juvenile otters be limited by the reduction of available
256 territories? Habitat saturation is regarded as the main constraint inducing breeding
257 individuals to delay breeding but fails to explain the evolution of delayed dispersal
258 (Koenig et al. 1992). The "Habitat Saturation Hypothesis" has been tested through
259 manipulation of populations of birds and fishes but results were variable (Komdeur
260 1992, Bergmüller et al. 2005, Stiver et al. 2006). Authors have demonstrated that the
261 reproduction success of cooperative carrion crows *Corvus corone* (Canestrari et al.
262 2008) increases with group size but investigating the ecology of delayed dispersal
263 Baglione et al. (2005) observed that philopatry in the carrion crow occurred mainly in the
264 less competitive and less variable environments and that cooperative breeding and
265 delayed dispersal appeared to be independent of the availability of suitable breeding
266 habitats for subordinates (Baglione et al. 2005). Dispersal distances varied strongly

267 within a species revealing extremely flexible dispersal strategies (Le Galliard et al.
268 2012) and dispersal could be more environmental condition-dependent than expected
269 (Bowler and Benton 2005). Thus, resource availability may drive group size.

270 Parental care has been argued to be a precondition for limited dispersal and
271 therefore, should promote a mechanism similar to, or undistinguishable from, kin-group
272 selection. However European badgers' parental care may be very limited after weaning,
273 but their dispersal is limited as long as their habitat does not appear to be saturated.
274 Examining the genetic structure and the mating system of Coquerel's dwarf lemur
275 (*Mirza coquereli*), Kappeler et al. (2002) discussed "hidden" effects of kinship in the
276 dispersal systems of apparently 'solitary' animals. They found that apparent 'solitary'
277 individuals are structured in matriline. As a result, paternity was widely spread among
278 males and mixed paternities existed. The philopatry of solitary carnivore raccoon
279 (*Procyon lotor*) females also influences the genetic structure of the entire population
280 (Ratnayeke et al. 2002). Similarly, male-biased dispersal and female philopatry basically
281 favour the social organization of corvids (Williams and Rabenold 2005). Species exhibit
282 wide dissimilarities in dispersal strategies with no clear tendencies between solitary or
283 cooperative species (Clobert et al. 2001). Dispersal distances of mammals are
284 proportional to the size of their home-range, considering body size independently
285 (Bowman et al. 2002). Emigration governs group dynamics and, indeed, cooperation
286 appears more extensive among individuals of the sex that are less likely to disperse,
287 mostly females (Wrangham and Rubenstein 1986). Furthermore, although limited
288 dispersal can favour cooperation, it can also generate competitive interactions,
289 especially between mates. Limited and delayed dispersal seems therefore to be a
290 process similar to kin selection because constraints on dispersal have entailed the
291 development of kin-structured populations.

292 Mustelids' dispersal is often male-biased (Lodé 2001, Blundell et al. 2002b,
293 McDonald et al. 2008) and this is generally regarded as promoting avoidance of
294 inbreeding (Pusey 1987, Perrin & Mazalov 2000). Polygyny should favour philopatry of
295 the limiting sex and dispersal of the other (Greenwood 1980), increasing the operational
296 sex-ratio bias (ratio of breeding adults), so that males do not have the opportunity to find
297 mates. Living in aquatic ecosystems and often in linear water courses could constitute a
298 severe constraint to dispersal, and patterns of dispersal of breeding subaquatic
299 mustelids proceed according to the stepping-stone model (Gadgil 1971, Sjöåsen 1997)
300 in which sub-population exchanges are favoured in contiguous zones (Lodé 2002,
301 Bifulchi and Lodé 2005). Thus, European otters exhibit only limited dispersal
302 movements (Kalz et al. 2006). A relatively high proportion of sea otters could however
303 be long-distance dispersers (Krkosek et al. 2007).

304 The formation of male groups appears to be linked to reduced dispersal and to the
305 philopatry of females in polygynous species in which habitat saturation might occur.
306 Single-sex groups are observed in some species, leading to male bachelor social
307 congregations (Pope 1990, Ruckstuhl and Neuhaus 2000). By forming coalitions,
308 species regarded as solitary, such as cheetahs (*Acinonyx jubatus*) and slender
309 mongooses (*Herpestes sanguineus*) are expected to forage more successfully and to
310 have better access to females (Caro and Collins 1987, Waser et al. 1994). Genetic
311 similarity among siblings facilitates male coalitions and cooperation (Packer et al. 1991,
312 Waser et al. 1994, Kays et al. 2000, Möller et al. 2001, Spong et al. 2002). When
313 members of these alliances are related, they can benefit indirectly when the alliance
314 enhances their future reproduction success (Packer et al. 1991, Kays et al. 2000, Mitani
315 et al. 2000). Sea otters (Garshelis et al. 1984, Pearson and Davies 2005), African
316 clawless otters (Arden-Clarke 1986) and North American river otters (Blundell et al.
317 2002a) can form male bachelor congregations but they do not always hunt together and

318 do not form any coalition for mates. This suggests that mechanisms other than kinship
319 are involved in the formation of groups of males (Griffin and West 2002).

320

321 **SOCIOECOLOGICAL AND LIFE-HISTORY RELATED HYPOTHESES**

322

323 **Ecological constraints**

324 Could the strong constraints of aquatic habitats also weigh on the emergence of the
325 otters' social life? Although otters live in aquatic habitats and have relatively similar
326 ecological requirements, the different species present a great diversity of social
327 structures, including solitary habits and group-living. Similarly, the social structures and
328 mating systems of dolphins vary although they live in marine habitats and while the killer
329 whales (*Orcinus orca*) travel in extremely stable social groups, most dolphin species
330 appear to have a more fluid social organization (Tyack 1986, Baird et al. 1992, Möller et
331 al. 2001). By contrast, and although mongooses are known to show greatly complex
332 social organizations associating adult breeders and helpers, water mongooses (*Atilax*
333 *paludinosus*) live a strict solitary life despite the use of aquatic habitats (Ray 1997).
334 Thus, we reason that freshwater ecosystems do not impair the social life style of
335 animals.

336 However, might ecological requirements and habitats in which a population
337 resides influence whether or not a species lives a social life? Predator avoidance and
338 the monopolization of food resources are often the two ecological hypotheses preferred
339 to explain the formation of social groups (Alexander 1974, Wrangham and Rubenstein
340 1986, Bergmüller et al. 2005, Ylönen and Brown 2007). Obviously, living in social
341 groups facilitates cooperation for foraging and defence (Smith et al. 2012). Proposing
342 the “ecological constraints hypothesis” Smith et al. (2008) showed that cooperation
343 could increase individual benefits for trophic resources and defence. The scarcity of

344 breeding sites has been evoked as a key factor determining cooperative breeding in
345 birds (Koenig et al. 1992, Cockburn 1998). Analysing natal philopatry and cooperative
346 breeding of Siberian jays (*Perisoreus infaustus*) Kokko and Ekman (2002) realized that
347 “ecological constraint” is a term too wide to yield useful predictive power.

348 Nevertheless, low availability of resources could affect cooperative strategies
349 significantly. In his detailed review of the literature available at that time, Powell (1979)
350 proposed that the social organizations of mustelids were fundamentally based on intra-
351 sexual territoriality, with male home-ranges overlapping those of females. Basically,
352 dependent on food resources, this spatial organization seems to form a socio-ecological
353 pattern that is very common in carnivores (Johnson et al. 2000). Dispersion of resource
354 patterns could drive socio-spatial organization, allowing some species to congregate
355 with variable social organization (Macdonald & Newman 2018). All otter social systems
356 are considered as variations on a theme of female territories overlapped by larger male
357 territories (Kruuk 2006).

358 The “Resource Dispersion Hypothesis (RDH)” (Macdonald 1983, Carr and
359 Macdonald 1986, Johnson et al. 2002, Macdonald and Sillero-Zubri 2004) argues that
360 when resources are heterogeneously distributed, group living may be less costly, even
361 without cooperative behaviour. This resource-based hypothesis proposes that patchy
362 resources favour the overlap of conspecific home-ranges, leading to the promotion of
363 social life. The main predictions are that *i*) home range size would be independent of
364 group size, *ii*) home-range size would increase with dispersal of prey, *iii*) but group size
365 would be affected by resource heterogeneity and *iv*) by resource patch richness. The
366 social organisation of the British populations of European badgers (*Meles meles*) was
367 found to be coherent with the HDR hypothesis (Carr and Macdonald 1986). However,
368 Mbizah et al. (2019) investigating lion groups could not confirm some of the HDR
369 predictions since the evaluations of resource heterogeneity and resource patch richness

370 did not show any significant effects on the size of lion groups. The sizes of European
371 badgers' territories in Spain were shown to be related to their richness rather than to
372 patch dispersion (Revilla and Palomares 2002). During the non-breeding season males
373 of numerous mustelids can maintain their territories for the defence of offspring
374 (Schröpfer et al. 1997), but by marking home-ranges actively males can also defend
375 future mating opportunities. Therefore, the resource dispersion model can describe
376 some environmental constraints restricting or favouring group-living rather than those
377 driving social life (Revilla 2003, Verdolin 2009).

378 Nevertheless, following RDH, could groups be formed because mixed resources
379 dispersed in space and time are indefensible individually? Although most reports are
380 based on local data from one particular habitat / density region, the flexibility of social
381 systems suggests however a slightly more complex situation. Groenendijk et al. 2015
382 conclude that giant otter societies are probably shaped by the spatial dispersion of lakes
383 and food abundance and dispersion within these rich patches, while North American
384 river otters have clearly broken some expectations. Indeed, many individuals exhibit
385 roaming excursions and mustelids often show a high level of intolerance even between
386 males and females and territoriality can sometimes be absent (Erlinge and Sandell
387 1986, Lodé, 1996a). Otters are often found to exploit aquatic organisms patchily in river
388 courses, seashores and lakes but both solitary and group-living otters exhibit a similar
389 pattern of resource utilization (Brzezinski et al. 1993, Rowe-Rowe and Somers 1998,
390 Rosas et al. 1999, Somers & Nel 2003, Medina-Vogel et al. 2004, Parker et al. 2005,
391 Medina-Vogel and Gonzales-Lagos 2008; Córdova et al. 2009, Cabral 2010,
392 Rheingantz et al. 2011). In addition, North American river otters' home-range sizes
393 decrease with sociality, thus challenging the first prediction of the RDH (Blundell et al.
394 2002a). Nonetheless, in order to validate these views, we would need more data
395 concerning different populations of the same species.

397 **Reciprocal altruism**

398 Cooperative breeding means that the quality of interactions among conspecifics is
399 privileged, often promoting the emergence of 'altruistic' behaviours. What behavioural
400 rules make it likely that social groups will be formed? Nepotism can lessen conflicts
401 between selfish interests but authors now commonly admit that helpers are less closely
402 related to breeders than previously suspected (Clutton-Brock 2002), so how could
403 unrelated helpers benefit from progeny care?

404 Trivers' (1971) Reciprocal Altruism Hypothesis emphasized that group-living and
405 cooperation could result from reciprocal interactions providing mutual benefits.
406 'Reciprocal altruism' allows that altruistic acts exist between unrelated individuals as
407 well as between relatives. This requires that individuals interact often and are able to
408 recognize individuals with whom they have interacted. West et al. (2007) suggested that
409 the use of the term 'mutual benefit' would be more correct. In a reciprocal cooperation,
410 individual cost of cooperation is offset by long-term benefits of being helped, and
411 helpers must be able to identify cheaters (Sachs 2004, West et al. 2007). For instance,
412 blood sharing regurgitation by vampire bats (*Desmodus rotundus*) is interpreted as
413 'reciprocal altruistic' food sharing (Denaut and McFarlane 1995). The formation of male
414 baboon (*Papio anubis*) coalitions has been understood as an example of 'reciprocal
415 altruism' (Packer 1977). Similarly, green woodhoopoes (*Phoeniculus purpureus*) exhibit
416 behaviours that appear to meet all the criteria of reciprocity between unrelated helpers
417 (Ligon and Ligon, 1983). At least three other species present cooperative foraging and
418 food sharing behaviours that seem to respond to a sort of reciprocal altruism.

419 Numerous examples of *pseudo-reciprocity* promoting self-serving behaviour have
420 been mentioned in the literature (West et al. 2002). Unlike sentinel behaviour, helpers
421 are however characterized by the asymmetry of the interaction because 'altruistic'

422 individuals contribute care to offspring at the expense of their own progeny. Reciprocal
423 cooperation could be encouraged by a high rate of mortality that leads to the evolution
424 of these mutually beneficial interactions. Such events should act as enforcement
425 because they influence both the cost and benefit of cooperating (West et al. 2007).

426 Numerous species of group-living otters present sentinel behaviour, and at least,
427 three otter species include helpers, i.e. cooperative foraging, food sharing and collective
428 defence against predators by unrelated adults, yearlings or juveniles. Cooperative
429 helpers are observed in Giant otters (Duplaix 1980, Davenport 2010, Groenendijk et al.
430 2014, Schmelz et al. 2017) and in American river otters (Rock et al. 1994, Larivière &
431 Walton 1998, Blundell et al. 2002a). The average relatedness within groups of Giant
432 otters was high, but the degree of relatedness could vary within groups that included
433 unrelated individuals, contradicting the current social hypothesis of a parent brood
434 model (Ribas et al. 2016). Although the social structure of small-clawed otters has not
435 yet been studied in detail in the field this species is considered the most social
436 (Johnson et al. 2000) and many authors report that a group shares a nest and behaves
437 as a social unit, that individuals practice allogrooming and “interactive games”, and that
438 siblings can help raise offspring, the alpha pair being dominant (Furuya 1976, Pellis
439 1984, Foster-Turley 1992, Sivasothi and Nor 1994, Sivasothi 1996, Larivière 2003,
440 Kruuk 2006; Prakash 2010, Hussain et al. 2011, Perdue et al. 2013).

441 To reproduce successfully, animals require territories with good trophic
442 availability and have to find sexual partners. The pay-to-stay hypothesis argues that
443 help at nest constitutes a kind of “rent” paid to a dominant for being allowed to live in the
444 dominant’s home-range. So, rather than attempt to breed with difficulty after a
445 dangerous dispersal trip, it may be reasonable to remain for one more year within the
446 family, delaying breeding opportunity, to acquire better survival probability and parental
447 experience (Komdeur 1996, Kokko and Johnstone 1999). This acquisition of experience

448 could be one of the indirect gains of cooperative breeding (Clutton-Brock 2002) and is
449 obtained by waiting for better dispersal opportunities, especially in unpredictable
450 environments, so that cooperative breeding could appear to be making 'the best of a
451 bad job' (Rubenstein and Lovette 2007). Nevertheless, such indirect benefits do not
452 seem to play a crucial role for western bluebird (*Sialia mexicana*) helpers' fitness
453 (Dickinson 2004). Mechanisms rewarding helpers are assumed to be more common
454 and more effective for maintaining cooperative breeding than punishment (Snowdon
455 and Cronin 2007). Conversely, direct enforcement mechanisms, such as harassment,
456 may not result in complete repression of within-group competition.

457 Competition for resources among individuals can then defeat cooperative
458 behaviour (Gardner and West 2004) and furthermore, by remaining with their family
459 individuals become subordinates in the kin group and may lose their chance to breed.

460

461

462 **INTRASPECIFIC VARIATION IN SOCIALITY**

463

464 **Variations in reproductive opportunity**

465 As social groups incorporate adults, how could competition for mates influence social
466 life? The avoidance of inbreeding amongst closely related within-group kin could drive
467 suppression of reproduction and/or drive extra-group kleptogamy. Reproduction ability
468 variation among group members is called 'reproductive skew'. Indeed, group-living often
469 inhibits subordinates' breeding (Wasser and Barash 1983). Basically, non-breeding
470 individuals endure an intrinsic conflict concerning reproduction as they receive complex
471 social and physiological messages implying social dominance, harassment and
472 glucocorticoid stress (Creel 2001, Mech and Boitani 2003, Goymann and Wingfield
473 2004, Bennett 2009, Rubenstein and Sheng-Feng 2009). Thus, dominant adults of

474 different mongoose species manipulate subordinates to suppress all their reproduction
475 opportunities (Creel et al. 1992, Cant 2000, Clutton-Brock et al. 2004). In fact, behavioural
476 inhibition of subordinates' reproduction abilities could be one of the keys to carnivores'
477 social life (Creel and McDonald 1995). While the 'Optimal Skew Model' of reproductive
478 suppression assumes that dominant pairs monopolize reproduction preventing
479 subordinates from breeding (Vehrencamp 1983, Reeve and Keller 1995), Cant (2000)
480 argued that control by the alpha pairs is chiefly social and often remains incomplete,
481 sometimes allowing subordinates to reproduce more or less successfully. However,
482 different models of reproductive skew seem to be declinations of a general theory,
483 rather than alternative paradigms (Johnstone 2000).

484 Reproductive skew and dominance are not well known for most of the otter
485 species, but the social structure of many otter species could suggest such a
486 characteristic. Small-clawed otters and North American river otters form monogamous
487 pairs but several individuals, up to thirteen, including young and helpers can live
488 together (Furuya 1976, Pellis 1984, Foster-Turley 1992, Rock et al. 1994, Sivasothi
489 1996, Blundell et al. 2002a, Prakash 2010, Hussain et al. 2011, Perdue et al. 2013). A
490 group includes a dominant pair of male and female adults and the hierarchical
491 organization of the group around this alpha pair suggests a possible influence of low
492 reproduction conflict and parental manipulation, inhibiting subordinates' mating.
493 Similarly, only the original giant otter parents, the alpha pair, generally breed during
494 their lifetime and juveniles behave as helpers (Duplaix 1980, Davenport 2010;
495 Groenendjik et al. 2014). Nevertheless, subordinates, and especially females, can
496 sometimes breed in some populations of giant and small-clawed otters.

497 Competition for access to sexual partners is a fundamental component of sexual
498 selection, and dominance interactions result in inhibition or suppression reproduction of
499 group-living subordinates without requiring individuals to be closely related.

500 Nevertheless, close relatedness could increase tolerance to manipulation, especially
501 since the individuals forming a group generally originate from the same family. Thus,
502 evolution towards social groups could result from interactions within family groups
503 implying dominance and harassment that suppress subordinates' reproduction
504 opportunities. The alpha pair of meerkats (*Suricata suricatta*) increases survival rates of
505 their progeny by harassing subordinates (Griffin et al. 2003, Young et al. 2006).
506 Although reproduction opportunities amongst individuals of different ranks often show
507 that dominant individuals accrue greater reproduction benefits than subordinates,
508 banded mongooses (*Mungos mungo*) have been found to exhibit low reproductive
509 skew, suggesting that the societies of some social species such as banded mongeese
510 could be relatively egalitarian (Luca and Ginsberg 2001). Similarly, dwarf mongoose
511 subordinates can reproduce sometimes (Keane et al.1994).

512

513 **Variations in social patterns**

514 Most studies dealing with ecological constraints concern different morphologically
515 dissimilar species and different ecological resources. By contrast, otters show similar
516 amphibious habits and exhibit comparable ecological requirements although specific
517 social structures vary greatly. Many otter species are known to fluctuate intra-
518 specifically from solitary lifestyle (often called 'solitary' species) to group-living
519 organizations whereas other species exhibit stable social traits (Fig. 2). 'Solitary'
520 however does not mean asocial. The term 'solitary' applied to a species is misleading
521 because it ignores both indirect social interactions and social phases, *i.e.* between
522 sexual partners or mother-cubs relationships for instance and I proposed that it could be
523 replaced by the term 'individualistic' (Lodé et al. 2003), not in its pejorative sense, but
524 meaning independent lifestyle. European otter populations can exhibit solitary ways of
525 life as well as social habits in some parts of their range (Kruuk 2006, Quaglietta et al.

526 2014). Indirect social interactions through olfactory marks give extensive information
527 about conspecifics and the social organization of solitary species is mainly based on
528 odours. Solitary species such as polecats *Mustela putorius* (Lodé 2008) or social small-
529 clawed otters (Lemasson et al. 2013) are capable of olfactory recognition.

530 Variations of social patterns illustrate that the term 'social life' encompasses
531 numerous situations which are sometimes called 'solitary', 'subsocial', 'familial',
532 'eusocial' or 'highly' social. Quantitative measures of social level were proposed to
533 estimate, along a sociality scale from solitary to eusocial, the 'tendencies of individuals
534 to live in groups' as a result of philopatry, to exhibit reproduction altruism and
535 conspecific tolerance (Nonacs 2000, Reiczigel et al. 2008, Bang et al. 2009, Avilés and
536 Harwood 2012). In fact, the current consensus concerning group-living animals
537 hypothesizes a selection progressively leading towards more elaborate forms of
538 sociality, presupposing a 'solitary' ancestral state (Creel & McDonald 1995, Véron et al.
539 2004, Dalerum 2007, Schultz et al. 2011, Smith et al. 2012). Nonetheless, we can
540 imagine a more flexible ancestral state so that some species' solitary habits may stem
541 from ancestors exhibiting a flexible social organization (Dalerum 2007). Thus, although
542 four American otter species are phylogenetically closely related, they exhibit very
543 divergent social traits, neotropical river otters and southern river otters live solitary lives
544 although they have only recently diverged from North American otters and marine otters
545 that can live in small family and social groups. Species showing solitary habits are
546 equally distributed across the three continents (two species in Africa, two species in
547 America and two species in Eurasia), conversely four of the seven group-living otter
548 species are found in America, only one in Africa and two in Eurasia, showing weak
549 differences among continents.

550 For sociality to evolve, the benefits of living in a group must outweigh the costs.
551 (Krause and Ruxton 2002). In fact, Silk (2007) argued that the difficulty to link the

552 effects of behavioural interactions to fitness explains why sociality varies across species
553 and habitats. Following Emlen and Wrege (1994) and Emlen et al. (1995), social
554 behaviour can however be consider as a series of decisions made by an individual
555 during its lifetime. As a component of social strategy, each behavioural option can
556 influence an individual's fitness and staying within the familial group could therefore
557 represent the 'best of a bad job', promoting future cooperation. Subordinates could
558 obtain some benefits by staying as helpers. Thus, delayed dispersal would be the best
559 decision when numerous competitors or predators are present and prolong the benefits
560 of parental care (Ekman et al. 2001, Kokko and Ekman 2002). Females may inherit the
561 home-range of their mother whereas males could be obliged to delay their dispersal
562 until they have the opportunity to find an available territory and a mate, because many
563 females stay in their parental territories. In return, groups can help prevent receptive
564 females from invading 'floater' individuals. Such anti-harassment behaviour is observed
565 in baboons (Lemasson et al. 2008). Finally, female sociality could allow the best access
566 to patchy resources when faced with competing males. Thus, the social system of
567 female white-nosed coatis (*Nasua narica*) favours their foraging success whereas larger
568 males are able to compete for food without living in groups (Gompper 1996). Group-
569 living patterns of communally rearing rodents (*Octodon degus*) vary according to food
570 availability and predation (Ebensperger et al. 2012).

571 While striped mice (*Rhabdomys pumilio*) show solitary habits in grassland but in the
572 arid succulent karoo they live in social groups comprising multiple adults of both sexes
573 that share a nest and the same territory (Schradin and Pillay 2005). Similarly, intra-
574 specific variations of gorillas' social organization are influenced by ecological and social
575 factors (Yamagiwa et al. 2003). In addition, hyenas adjust their grouping patterns
576 following a fusion-fission dynamics in response to feeding competition; they are the
577 most gregarious during periods of abundant prey, but forage alone when cooperative

578 hunting attracts numerous competitors (Smith et al. 2008). Opportunistically solitary
579 individuals may gather in temporary unstable mixed-sex groups. The composition and
580 the stability of these groups differ across habitats and groups tend to be open and ever-
581 changing. For instance, members of aggregations of giraffes (*Giraffa camelopardalis*)
582 usually change every few hours (Leuthold 1979, van der Jeugd and Prins 2000). We
583 inferred that group-living patterns vary with *sexual*, *ecological* and *behavioural* factors
584 as in a mechanism that integrates the characteristics of social systems with individual
585 behavioural strategies and ecological requirements.

586

587 **EVIDENCE FROM OTTER SPECIES**

588

589 **Group structure changes**

590 Social otters pairs mate for life. As the alpha pair is dominant, offspring of subsequent
591 years frequently stay with their parents, forming extended families and the territories of
592 different groups do not overlap. Indeed, the reasons why females remain in their family
593 group differ from those of males. For instance, North American river otter males are
594 more social than females and to cooperate for feeding so that Blundell et al. (2002a)
595 concluded that cooperative foraging is a key factor influencing social organization of
596 coastal river otters.

597 Different forms of social organisation can occur even within a species. Group-
598 living otter species present more intraspecific variations than solitary species. By
599 confining ourselves to the concept of 'social species' to understand the evolutionary
600 determinants of group-living life, we underestimate both the evolutionary significance of
601 so-called 'solitary' species, *i.e.* species showing solitary habits (Lodé et al. 2003) and
602 the importance of intraspecific variations and the behavioural plasticity of populations.

603 Therefore, by focusing on the population level rather than only on the species level,
604 analysis of changes in social life can highlight new relevant factors.

605 The group structure of otters changes according to trophic resources and social
606 interactions and group stability differs across different habitats. While Prox and Farine
607 (2020) suspect that tolerance and stability are two central elements of mammalian
608 social organization, it seems that one of these traits is not independent of the other and
609 that stability is promoted by social tolerance. Social life of numerous species seems
610 actually to be organized around the more or less extended family. Thus, although
611 kinkajous generally solitarily (Kays & Gittleman 2001), adult males and females within a
612 group were unrelated while subadults and juveniles were their offspring, suggesting a
613 family structure (Kays et al. 2000).

614 Nonetheless, juveniles can only stay if the parental territory can provide sufficient
615 resources to meet their needs. Actually, otters adjust their grouping patterns in
616 response to food availability, to competition and to predators. It could be reasoned that
617 group-living formations are driven by *sexual, ecological and behavioural variations*
618 reflecting individual decisions and life-history traits, and emphasizing the structural role
619 of social interactions, even for solitary species. Thus, the term 'social life' could be
620 thought to reflect a set of quite different situations (Fig. 3) where each step builds a
621 more or less temporary social organization: *i.e.* 1) *family group*, 2) *extended family*
622 *group*, often with an *alpha dominant pair but with no helpers* 3) *social group with*
623 *helpers*, 4) *collective hunting group* (cooperative activities), 5) *solitary life-style* 6)
624 *unstable mixed-sex group* ('individualistic' foraging) and 7) *male social congregation*. By
625 identifying the main facets of social organization (excluding eusociality), and reflecting
626 more or less dynamic structures according to individual decisions and ecological
627 conditions, this typology of group-living is relevant for numerous species, avoiding
628 imprecise definitions such as subsocial.

629

630 During ontogeny, interactions that define the place of each individual in a group
631 are developed within their *family group*. *Solitary habits* differ from *family group* because
632 offspring stay in their *family group* until they reach sexual maturity, whereas offspring
633 have to leave their mother and disperse soon after weaning when living a *solitary life*.
634 Although animals forage solitarily, they can gather opportunistically in open mixed-sex
635 aggregations (*unstable mixed-sex group*) for some hours or some months in response
636 to predation pressure or to exploit temporary abundant resource. These *unstable*
637 *groups* are mainly composed of females and juveniles, sometimes a *family group* can
638 join an unstable group temporarily. Juveniles in a *family group* disperse when they
639 reach sexual maturity while *extended family groups* include several generations of
640 young. Males may be encouraged to stay within an *extended family group* when
641 competition for trophic resources is quite restricted and when females do not disperse,
642 since their chances to find a mate are then reduced, leading to an *extended family*
643 *group*. Thus philopatry and delayed dispersal would result in sexual competition for
644 mates, involving dominance-subordinate interactions with possible suppression of
645 reproduction (*alpha dominant pair*). Subordinates can be driven to become helpers to
646 facilitate their maintenance within a group forming a *highly social group with helpers*,
647 generally dominated by an alpha pair, although they can have a relationship involving
648 varying degrees of conflict with dominants. Helpers have to participate in the rearing of
649 the progeny but may forage 'individualistically'.

650

651 **Collective hunting and prey switching**

652 *Collective hunting* by otters may occur, in the form of cooperative activities, according to
653 the size and mobility of available prey and could be affected by competition with other
654 predators. Indeed, forming a cooperative group appears an efficient strategy allowing

655 animals to catch rapid prey, often grouped in schools, or prey relatively large in regard
656 to their size, or when competitive interactions with other predators appear unfavourable
657 (Packer and Ruttan 1988). While cooperative breeding could be regarded as an
658 'altruistic' behaviour because helpers contribute care to offspring at the expense of their
659 own reproduction, *collective hunting* characterizes a more selfish behaviour. Packer and
660 Ruttan (1988) provide a simple but operational definition of cooperation as '*hunting in*
661 *the presence of a companion*'. Collective hunting can sometimes be interspecific as for
662 instance coyotes and American badgers. In fact, although *collective hunting* reveals a
663 form of cooperative activities based on long-term relationships (Smith et al. 2012), it can
664 sometimes result in a certain asymmetry of interactions such an unequal sharing of food
665 (Packer & Ruttan 1988, Boesch 1994), the breeding pair typically monopolizing most of
666 food (Mech and Boitani 2003). Boesch and Boesch (1989) recognized different levels of
667 cooperation including coordination and collaboration in hunting behaviour. However,
668 hunting cooperation does not appear to require many deliberate interactions as
669 suggested by subsocial spiders (Wickler and Seibt 1993), so that there is no reason to
670 claim that cooperative hunting reflects advanced cognitive abilities or complex social
671 organizations, since similar strategies are generally used for different prey (Packer and
672 Ruttan 1988, Mech and Boitani 2003).

673 Finally, individuals may disperse, foraging and using a den alone (*solitary life-style*),
674 or can gather opportunistically in unstable mixed-sex aggregation (*unstable mixed-sex*
675 *group*) including mainly females and juveniles, or form single-sex bachelor groups (*male*
676 *social congregations*) depending on ecological resources and predators. Solitary
677 mustelids seem to switch prey (Delibes and Adrian 1987, Weber 1990, Lodé 1996b,
678 1997, Clavero et al. 2003, 2006, Prigioni et al. 2006, Remonti et al. 2008, Pagacz and
679 Witczuk 2010) when they compete with other predators. Depending on prey type and on
680 exploited habitat, solitary habits are favoured by prey switching to alternative resources,

681 whereas specialization in particular prey types could facilitate congregations (Lodé
682 2000, Blundell et al. 2002a). Being aquatic species, otters' capacities to switch prey are
683 limited, ranging from fish to arthropods. Giant otters and Asian small-clawed otters are
684 able to cooperate and coordinate their predatory activities (Schmelz et al. 2017). In fact,
685 feeding specializations and behavioural inertia against prey switching could be linked to
686 the fact that efficient exploitation of distinct prey requires animals to have radically
687 different sensory motor skills to survive. Furthermore, the existence of the unstable rafts
688 of sea otters and of male bachelor social congregations, at least of North American river
689 otters and African clawless otters, suggest that dispersal and competition for mates
690 cannot preclude group-living patterns and cooperation.

691

692 **A series of individual decisions**

693 We propose that group-living is driven by a sequence of individual decisions following
694 *sexual, ecological and behavioural* covariance (SEB model). Although this model does
695 not discriminate very well among variables, it can also account for the fission-fusion
696 dynamics common to many group-living species. Simple immediate decisions within a
697 family group govern complex social interactions prone to favour reproduction success in
698 the long term. Individuals engage in different optional alternatives in response to more
699 or less proximal factors:

700 1) Soon after weaning, an animal can either disperse or stay:

701 *i)* if it disperses, *a)* it can live an solitary life, exploiting a food resource until depletion
702 when resources are distributed in patches, or *b)* it can join opportunistically an unstable
703 mixed-sex group or *c)* it can join a bachelor group when trophic resources replenish
704 rapidly or when it feeds upon large prey, or *d)* it can join another group and mate later,
705 dispersal thus avoids inbreeding depression.

706 *ii)* if it stays and remains in its family group, *a)* it can forage solitarily when good
707 resource availability reduces competition, or *b)* it can hunt collectively when prey are
708 gathered in schools or are too large to be caught alone, or *c)* a family group composed
709 of a female and her cubs can join an unstable group temporarily.

710 2) After reaching sexual maturity or when the alpha pair breeds,

711 *i)* it can disperse as in the first option,

712 *ii)* or it can stay and engage more or less subordinate behaviour, and becomes a helper
713 if it is tolerated by the dominant (Fig. 4). Although no genetic tests have yet proven
714 extrapair paternity, it is likely that several adult individuals participate in reproduction,
715 especially in species such as small-clawed otters, American river otters and giant otters,
716 as otters and mink may be capable of superfetation (Yamagushi et al. 2004, Broekhuizen
717 et al. 2007).

718 Habitat features and prey types affect the social organization of otters suggesting
719 that social systems could be associated with particular niche variations. A major reason
720 of group-living can be found in the fact that the trophic resource replenishes rapidly,
721 thus favouring the formation of a group. This is principally the case when invertebrates
722 constitute the main food source. For instance, sea otters feed preferentially upon clams,
723 mussels, sea stars and urchins and lead a very social life. Giant otters opportunistically
724 eat the most abundant species locally and cooperate for hunting big fish and alligators
725 (Rosas et al. 1999). Cape clawless otters' diets include few fish but many crustaceans
726 and molluscs, whereas more solitaires species such as neotropical otters prey on small
727 fish, smooth otters chiefly prey on large fish and Eurasian otters feed mainly on small
728 fish, crayfish and amphibians. As a crab-specialist (Foster-Turley 1992, Kruuk et al.
729 1994, Melish et al. 1996, Kanchanasakha 2007, Hon et al. 2010) small-clawed otters
730 exhibit a high level of social interactions in *highly social groups with helpers*, but are
731 very flexible according to their environment (Perinchery 2008, Hussain et al. 2011,

732 Perinchery et al. 2011, Perdue et al. 2013). It seems that intraspecific competition is
733 considerably reduced because patches of prey cannot be exploited in a single feeding
734 although each group member forages solitarily. Hunting success for such small prey is
735 likely to be dependent on dexterity and locomotor performances. Smooth-coated otters
736 can learn socially how to exploit novel food resources and adopt a 'copy when young'
737 strategy (Ladds et al. 2017). All otters are very agile in water, but because their short
738 claws do not extend beyond their forepaws, small clawed otters have an excellent
739 sense of touch and coordination. Similarly, group-living African clawless otters lack
740 claws and have been observed to feed on crabs, frogs and crayfish thus reducing
741 intraspecific competition (Butler and Marshall 1996, Somers 2000, Parker et al. 2005).
742 Though this species sometimes lives solitarily, African clawless otters can form family
743 groups of up to ten individuals (Butler and Marshall 1996). Similarly, spotted-necked
744 otters do not hunt cooperatively but can live in small family groups in swamps and lakes
745 where this species catches invertebrates, crabs and small fish (Kruuk and Goudswaard
746 1990).

747 Although marine otters mainly exploit molluscs, crustacean and benthic fish along
748 rocky coasts, this species' social behaviour is reduced to a *family group*, and sometimes
749 exhibits solitary habits, probably because this species uses wave-exposed habitats, is
750 very vulnerable to predators and depends strongly on available safe rocky shelters
751 (Villegas et al. 2007, Medina-Vogel et al. 2007, Mangel et al. 2010, Valqui 2011).
752 Smooth-coated otters form monogamous pairs and during the monsoon season their
753 basic *family group* consists of an adult female and offspring, they live in large rivers and
754 swamps but forage in shallow waters for slow fish, frogs, crabs, and insects (Helvoort et
755 al. 1996, Hussain 1996, Perrin and D'inzillo Carranza 2000, Anoop and Hussain 2004,
756 Khan et al. 2010). Group-living giant otters' diet in the flooded rain forest includes chiefly
757 small cichlids (Duplaix 1980, Carter and Rosas 1997, Davenport 2008; Leuchtenberger

758 and Mourão 2008, Davenport et al. 2010), revealing that solitary foraging could diminish
759 feeding competition within highly social groups. Giant otters can prey cooperatively
760 upon some large fish or fish schools, individuals surrounding prey when hunting
761 collectively (Rosas et al. 1999).

762 River otters have broad habitat preferences but while European and North
763 American river otters inhabiting rivers and streams generally exhibit *solitary habits* and
764 opportunistic diets (Melquist and Hornocker 1983, Mason and Macdonald 1986,
765 Newman and Griffin 1994, Kruuk and Moorhouse 1991, Kruuk 1995, Beja 1996; Durbin
766 1998, Ludwig et al. 2002, Bifulchi and Lodé 2005). European otters appear to be more
767 social than previously thought (Quaglietta et al. 2014) and most otter species can
768 present flexible social behaviours. Sociality is related to habitat features and acquisition
769 of food so that both North American river otters and European otters exploiting rocky
770 coasts and small benthic fish can live in groups (Kruuk and Moorhouse 1991, Shannon
771 1991, Rock et al. 1994, Reid et al. 1994, Larivière and Walton 1998, Blundell et al.
772 2002a, Blundell et al. 2004, Cote et al. 2008).

773 Although exploiting the same resource can increase competition dramatically,
774 larger groups of North American river otters coincide with increased availability of
775 schooling fish, because a large number of individuals surround schools in cooperative
776 hunting (Blundell et al. 2004). Conversely Neotropical river otters, southern river otters,
777 and Congo clawless otters have been observed to exhibit solitary habits when prey is
778 dispersed in patches, exploiting linear wooded freshwater brooks, rivers and lakes
779 (Helder and De Andrade 1997, Pardini 1998, Angelici et al. 2005, Kasper et al. 2004,
780 Kasper et al. 2008, Sepulveda et al. 2009, Gomez et al. 2010, Rheingantz et al. 2011).
781 Although this is probably the case for some other otter species, sea otters are known to
782 form opportunistically *bachelor congregations* and *mixed-sex unstable groups* called
783 pelagic raft, including from a dozen to as many as a thousand individuals mainly

784 because they are exposed to marine predators (Garshelis et al. 1984). However
785 reproductive adult males remain territorial and exclusive (Riedman and Estes 1990,
786 Pearson and Davis 2005). Sea otters are clam-specialists but show individual dietary
787 patterns transmitted along matriline mediating prey specializations and intraspecific
788 competition (Monson et al. 2000, Estes et al. 2003, Johnson et al. 2009, Laidre et al.
789 2009).

790

791

792 **CONCLUSION**

793 Despite decades of research dealing with group-living among species, we are far from
794 understanding the evolution of the social life of animals, maybe because it is unlikely
795 that any one model can explicate all facets of sociality.

796 Social factors rather than ecological factors may play an important role in the
797 formation and cohesiveness of groups in otter species. There is however much
798 evidence that ecological factors and other habitat constraints limit dispersal and
799 promote group-living. Variations of social life style actually reveal a series of events
800 which give rise to individual decisions in cascade related to ecological factors, otters
801 adjusting social patterns to environmental variations. Simple immediate decisions
802 govern complex social interactions driving group-living and favouring future reproduction
803 success. Originating from mother-cub relationships, the flexible social lifestyles of otter
804 species can reduce the cost of sociality because individuals can avoid social
805 interactions when benefits are low whereas they can gather together when group-living
806 provides more advantages.

807

808 **ACKNOWLEDGEMENTS**

809 We are grateful to Dr Mark Hauber and three anonymous referees for their constructive
810 comments. Thanks are due to Dominique Le Jacques for illustrations and to Ann
811 Cloarec for English corrections.

812

813

814 REFERENCES

- 815 Alexander RD (1974) The evolution of social behavior. *Ann Rev Ecol Evol Syst* 5: 325-383.
- 816 Axelrod R (1984) *The Evolution of Cooperation*. Basic Books, New York.
- 817 Angelici FM, Politano E, Bogudue AJ Luiseli L (2005) Distribution and habitat of otters. *Aonyx*
818 *capensis* and *Lutra maculicollis*. in southern Nigeria. *Ital J Zool* 72: 223-227.
- 819 Anoop KR, Hussain SA (2004) Factors affecting habitat selection by smooth-coated otters.
820 *Lutra perspicillata*. in Kerala, India. *J Zool Lond* 263: 417-423.
- 821 Archie EA, Moss CJ, Alberts SC (2006) The ties that bind, genetic relatedness predicts the
822 fission and fusion of social groups in wild african elephants. *Proc Roy Soc B Biol Sci* 273:
823 513-522.
- 824 Arden-Clarke CHG (1986) Population Density, Home Ranges and Spatial Organization of the
825 Cape Clawless Otter, *Aonyx capensis*, in a Marine Habitat. *J Zool* 209: 201-211.
- 826 Avilés L, Harwood G (2012) A Quantitative Index of Sociality and Its Application to Group-Living
827 Spiders and Other Social Organisms. *Ethology* 118:1219-122.
- 828 Baglione V, Marcos JM, Canestrari D, Griesser M, Andreotti G, Bardini C, Bogliani G (2005)
829 Does year-round territoriality rather than habitat saturation explain delayed natal dispersal
830 and cooperative breeding in the carrion crow? *J Anim Ecol* 74: 842-851.
- 831 Baird RW, Abrams PA, Dill LM (1992) Possible indirect interactions between transient and
832 resident killer whales. implications for the evolution of foraging specializations in the genus
833 *Orcinus*. *Oecologia* 89: 125-132.
- 834 Bang A, Deshpande S, Sumana A, Gadagkar R (2009) Choosing an appropriate index to
835 construct dominance hierarchies in animal societies. a comparison of three indices. *Anim*
836 *Behav* 79: 631-636.
- 837 Beja PR (1996) Temporal and spatial patterns of rest-site use by four female otters *Lutra lutra*
838 along the south-west coast of Portugal. *J Zool Lond* 239: 741-753.
- 839 Bennett NC (2009) Reproductive suppression in social *Cryptomys damarensis* colonies - a
840 lifetime of socially-induced sterility in males and females. *Rodentia, Bathyergidae*. *J Zool*
841 *Lond* 234: 25-39.
- 842 Bergmüller R, Heg D, Taborsky M (2005) Helpers in a cooperatively breeding cichlid stay and
843 pay or disperse and breed, depending on ecological constraints. *Proc R Soc Lond B Biol Sci*
844 272: 325-331.

845 Bifulchi A, Lodé T (2005) Efficiency of conservation shortcuts, a test with European otter as
846 umbrella species for biodiversity preservation. *Biol Conserv* 126: 523-527.

847 Bininda-Emonds ORP, Gittleman JL, Purvis A (1999) Building large trees by combining
848 phylogenetic information, A complete phylogeny of the extant Carnivora Mammalia. *Biol Rev*
849 74:143-175.

850 Blumstein DT (1999) Enhanced. Selfish Sentinels. *Science* 284: 1633-1634.

851 Blundell GM, Ben-David M, Bowyer RT (2002a) Sociality in river otters, cooperative foraging or
852 reproductive strategies? *Behav Ecol* 13: 134-141.

853 Blundell GM, Ben-David M, Groves P, Bowyer RT, Geffen E (2002b) Characteristics of sex-
854 biased dispersal and gene flow in coastal river otters, implications for natural recolonization
855 of extirpated populations. *Mol Ecol* 11: 289-303.

856 Blundell GM, Ben-David M, Groves P, Bowyer RT, Geffen E (2004) Kinship and sociality in
857 coastal river otters; are they related? *Behav Ecol* 15: 705-714.

858 Boesch C (1994) Cooperative hunting in wild chimpanzees. *Anim Behav* 48: 653-667.

859 Boesch C, Boesch H (1989) Hunting behavior of wild chimpanzees in the Tai' National Park. *Am*
860 *J Phys Anthropol* 78: 547-573.

861 Bowler DE, Benton TG (2005) Causes and consequences of animal dispersal strategies.
862 relating individual behaviour to spatial dynamics. *Biol Rev* 80: 205-225.

863 Bowman J, Jaeger JAG, Fahrig, L (2002) Dispersal distance of mammals is proportional to
864 home range size. *Ecology* 83: 2056-2061.

865 Brewer K (2008) Advantages and disadvantages of group living for animals. Orsett
866 Psychological Services, Grays.

867 Broekhuizen S, Lammerstma DR, Müskens G (2007) Re-mating in otter (*Lutra lutra*). *Lutra* 2007
868 50 (2): 135-139

869 Sim Broekhuizen, Dennis R. Lammertsma & Gerard J.D.M. Müskens

870 Brzezinski M, Jedrzejewski W, Jedrzejewska B (1993) Diet of otters *Lutra lutra* inhabiting small
871 rivers in the Bialowieza National Park, eastern Poland. *J Zool Lond* 320: 495-501.

872 Butler JRA, Marshall BE (1996) Resource use within the crab-eating guild of the upper Kairezi
873 River, Zimbabwe. *J Trop Ecol* 12: 475-490.

874 Cabral MMM, Zuanon J, De Mattos GE, Rosas FCW (2010) Feeding habits of giant otters
875 *Pteronura brasiliensis* Carnivora Mustelidae in the Balbina hydroelectric reservoir Central
876 Brazilian Amazon. *Zoologia* 27: 47-53.

877 Canestrari D, Marcos JM, Baglione V (2008) Reproductive success increases with group size in
878 cooperative carrion crows, *Corvus corone corone*. *Anim Behav* 75: 403-416.

879 Cant MA (2000) Social control of reproduction in banded mongooses. *Anim Behav* 59: 147-158.

880 Caro TM, Collins DA (1987) Male cheetah social organization and territoriality. *Ethology* 74: 52-
881 64.

882 Carr GM, Macdonald DW (1986) The sociality of solitary foragers, a model based on resource
883 dispersion. *Anim Behav* 34: 540-1549.

884 Carter SK, Rosas FCW (1997) Biology and conservation of the giant otter, *Pteronura*
885 *brasiliensis*. *Mamm Rev* 27: 1-26.

886 Clavero M, Prenda J, Delibes M (2003) Trophic diversity of the otter *Lutra lutra* L. in temperate
887 and mediterranean freshwater habitats. *J Biogeogr* 30: 761-769.

888 Clavero M, Prenda J, Delibes, M (2006) Seasonal use of coastal resources by otters.
889 Comparing sandy and rocky stretches. *Est., Coast. Shelf Sc* 66: 387-394.

890 Clobert J, Danchin E, Dhondt AA, Nichols JD (2001) *Dispersal*. Oxford University Press, Oxford.

891 Clutton-Brock TH (2002) Breeding together, kin selection and mutualism in cooperative
892 vertebrates. *Science* 296: 69-72.

893 Clutton-Brock TH, Russell AF, Sharpe LL, Brotherton PNM, McIlrath GM, White S, Cameron ED
894 (2001) Effects of helpers on juvenile development and survival in meerkats. *Science* 293:
895 2446-2449.

896 Clutton-Brock TH, Russell AF, Sharpe LL (2004) Behaviour tactics of breeders in cooperative
897 meerkats. *Anim Behav* 68: 1029-1040.

898 Cockburn A (1998) Evolution of helping behavior in cooperatively breeding birds. *Ann Rev Ecol*
899 *Syst* 29: 141-177.

900 Córdova O, Rau JR, Suazo CG, Arriagada A (2009) Comparative study of the feeding ecology
901 of the top predator *Lontra felina*. Molina, 1782. Carnivore, Mustelidae. in Chile. *Revista de*
902 *Biología Marina y Oceanografía*: 429-438.

903 Cote D, Stewart H, Gregory R, Reynolds J, Stenson G, Miller E (2008) Prey selection by marine
904 coastal river otters. *Lontra canadensis*. in Newfoundland, Canada. *J Mammal* 89: 1001-1011.

905 Couzin ID (2006) Behavioural ecology, social organization in fission-fusion societies. *Curr Biol* 16: R169-
906 R171.

907 Creel SR (1997) Cooperative hunting and group size, assumptions and currencies. *Anim Behav* 54:
908 1319-1324.

909 Creel SR (2001) Social dominance and stress hormones. *TREE* 16: 491-497.

910 Creel SR, Mcdonald DW (1995) Sociality, group size, and reproductive suppression among
911 carnivores. *Adv Stud Behav* 24: 203-257.

912 Creel SR, Waser PM (1994) Inclusive fitness and reproductive strategies in dwarf mongooses.
913 *Behav Ecol* 5: 339-348.

914 Creel SR, Creel NM, Wildt DE, Monfort SL (1992) Behavioural and endocrine mechanisms of
915 reproductive suppression in Serengeti dwarf mongooses. *Anim Behav* 43: 231-245.

916 Dalerum F (2007) Phylogenetic reconstruction of carnivore social organizations. *J Zool* 273: 90-
917 97.

918 Davenport LC (2008) Behavior and ecology of the Giant otter. *Pteronura brasiliensis* in oxbow
919 lakes of the Mnu biosphere reserve, Peru. Thesis, Univ. North Carolina.

- 920 Davenport LC (2010) Aid to a declining matriarch in the Giant Otter *Pteronura brasiliensis*. PLoS
921 One 5: e11385.
- 922 Delibes M, Adrian I (1987) Effects of *Crayfish* Introduction on *Otter* *Lutra lutra* Food in The
923 Dofiana National Park, SW Spain. Biol Conserv 42: 153-159.
- 924 Denaut LK, McFarlane DA (1995) Reciprocal altruism between male vampire bats, *Desmodus*
925 *rotundus*. Anim Behav 49: 855-856.
- 926 Dickinson JL (2004) A test of the importance of direct and indirect fitness benefits for helping
927 decisions in western bluebirds. Behav Ecol 15: 233-238.
- 928 Drewe JA (2010) Who infects whom? Social networks and tuberculosis transmission in wild
929 meerkats. Proc R Soc B 277: 633-642.
- 930 Duplaix N (1980) Observations on the ecology and behavior of the giant river otter *Pteronura*
931 *brasiliensis* in Suriname. Rev Ecol Terre et Vie 34: 495-620.
- 932 Durbin LS (1998) Habitat selection by fiver otters *Lutra lutra* in river of northern Scotland. J Zool
933 Lond 245: 85-92.
- 934 Ekman J, Eggers S, Griesser M, Tegelström H (2001) Queuing for preferred territories, delayed
935 dispersal of Siberian jays. J Anim Ecol 70: 317-324.
- 936 Emlen ST, Wrege PH (1994) Gender, status and family fortunes in the white-fronted bee-eater.
937 Nature 367: 129-132.
- 938 Emlen ST, Wrege PH, Demong NJ (1995) Making decisions in the family: an evolutionary
939 perspective. Am Scient 83: 148-157.
- 940 Erlinge S, Sandell M (1986) Seasonal changes in the social organisation of male stoats,
941 *Mustela erminea*, an effect of shifts between two decisive resources. Oikos 47: 57-62.
- 942 Ebensperger LS, Sobrero V, Quirici V, Rodrigo C, Tolhuysen L, Vargas F, Burger J, Quispe R,
943 Villavicencio C, Vasquez R, Hayes L (2012) Ecological drivers of group living in two
944 populations of the communally rearing rodent, *Octodon degus*. Behav Ecol Sociobiol 66:
945 261-274.
- 946 Estes JA, Riedman ML, Staedler MM, Tinkler MT, Lyon BE (2003) Individual variation in prey
947 selection by sea otters, patterns, causes and implications. J Anim Ecol 72: 144-155.
- 948 Foerster K, Valcu M, Johnsen A, Kempenaers B (2006) A spatial genetic structure and effects
949 of relatedness on mate choice in a wild bird population. Mol Ecol 15: 4555-4567.
- 950 Foster KR, Wenseleers T, Ratnieks FLW (2006) Kin selection is the key to altruism. TREE 21:
951 57-60.
- 952 Foster-Turley P (1992) Conservation ecology of sympatric Asian otters *Aonyx cinerea* and *Lutra*
953 *perspicillata*. PhD Thesis, Univ of Florida.
- 954 Furuya Y (1976) Otters in Padas Bay, Sabah, Malaysia. J Mam Soc Japan 7: 39-43.
- 955 Gadgil M (1971) Dispersal, population consequences and evolution. Ecology 52: 253-260.
- 956 Gardner A, West SA (2004) Spite and the scale of competition. J Evol Biol 17: 1195-1203.

- 957 Gardner A, West SA (2006) Demography, altruism and the benefits of budding. *J Evol Biol* 19:
958 1707-1716.
- 959 Garshelis DL, Johnson AM, Garshelis JA (1984) Social organization of sea otters in Prince
960 William Sound, Alaska. *Can J Zool* 62: 2648-2658.
- 961 Girman DJ, Mills MGL, Geffen E, Wayne RK (1997) A molecular genetic analysis of social
962 structure, dispersal, and interpack relationships of the African wild dog *Lycaon pictus*. *Behav*
963 *Ecol Sociobiol* 40: 187-198.
- 964 Gomez JJ, Gozzi AC, Macdonald DW, Gallo E, Centron D, Cassini MH (2010) Interactions of
965 exotic and native carnivores in an ecotone, the coast of the Beagle Channel, Argentina. *Polar*
966 *Biol* 33: 1371–1378.
- 967 Gompper ME, Gittleman JL, Wayne RK (1997) Genetic relatedness, coalitions and social
968 behaviour of white-nosed coatis, *Nasua narica*. *Anim Behav* 53: 781-797.
- 969 Gompper ME (1996) Sociality and asociality in white-nosed coatis *Nasua narica* foraging costs
970 and benefits. *Behav Ecol* 7: 254-263.
- 971 Goymann W, Wingfield V (2004) Allostatic load, social status and stress hormones, the costs of
972 social status matter. *Anim Behav* 67: 591-602.
- 973 Groenendijk, J., Hajek, F., Johnson, P. J., Macdonald, D. W., Calvimontes, J., Staib, E., &
974 Schenck, C. (2014). Demography of the giant otter (*Pteronura brasiliensis*) in Manu National
975 Park, south-eastern Peru: implications for conservation. *PLoS one*, 9(8), e106202.
976 doi:10.1371/journal.pone.0106202
- 977 Grafen A (2006) Optimization of inclusive fitness. *J Theor Biol* 238: 541-563.
- 978 Greenwood PJ (1980) Mating systems, philopatry and dispersal in birds and mammals. *Anim*
979 *Behav* 28: 1140-1162.
- 980 Griffin AS, West SA (2002) Kin selection, fact and fiction. *TREE* 17: 15-21.
- 981 Griffin AS, Pemberton JM, Brotherton PNM, McIlrath G, Gaynor D, Kinsky R, O’Riain J,
982 Clutton-Brock TH (2003) A genetic analysis of breeding success in the cooperative meerkat
983 *Suricata suricatta*. *Behav Ecol* 14: 472-480.
- 984 Groenendijk, J., Hajek, F., Schenck, C., Staib, E., Johnson, P. J., & Macdonald, D. W. (2015).
985 Effects of territory size on the reproductive success and social system of the giant otter,
986 south-eastern Peru. *Journal of Zoology*, 296(3), 153-160
- 987 Hailman JP, MCGowan KJ, Woolfenden GE (1994) Role of helpers in the sentinel behaviour of
988 the Florida scrub jay *Aphelocoma c. coerulescens*. *Ethology* 97: 119-140.
- 989 Hamilton WD (1964) The genetical evolution of social behavior I and II. *J Theor Biol* 7: 1-52.
- 990 Hansen H, McDonald DB, Groves P, Maier JAK, Ben-David M (2009) Social networks and the
991 formation and maintenance of river otter groups. *Ethology* 115: 384-396.
- 992 Hatchwell BJ, Sharp SP (2006) Kin selection, constraints and the evolution of cooperative
993 breeding in long-tailed tits. *Adv Stud Behav* 36: 355-395.

- 994 Helantera H, Bargum K (2007) Pedigree relatedness, not greenbeard genes, explains
995 eusociality. *Oikos* 116: 217-220.
- 996 Helder J, DeAndrade H (1997) Food and feeding habits of the neotropical river otter *Lontra*
997 *longicaudis* (Carnivora, Mustelidae). *Mammalia* 61: 193-203.
- 998 Helvoort BE Van, Melisch R, Lubis IR, O'callaghan B (1996) Aspects of Preying Behaviour of
999 Smooth-Coated Otters *Lutrogale perspicillata* from Southeast Asia. *IUCN Otter Spec Group*
1000 *Bull* 13: 3-7.
- 1001 Hon N, Neak P, Khov V, Cheat V (2010) Food and habitat of Asian small-clawed otters in
1002 Northeastern Cambodia. *IUCN Otter Spec Group Bull* 27: 12 – 23.
- 1003 Hussain SA (1996) Group-size, group structure and breeding in smooth-coated otter *Lutra*
1004 *perspicillata* Geoffroy Carnivora, Mustelidae. in National Chambal Sanctuary, India.
1005 *Mammalia* 60: 289-297.
- 1006 Hussain SA, Gupta SK, de Silva PK (2011) Biology and Ecology of Asian Small-Clawed Otter
1007 *Aonyx cinereus* . Illiger, 1815, A Review. *IUCN Otter Spec Group Bull* 28: 63-75.
- 1008 Jacques H, Véron G, Allary F, Aulagnier S (2009) The Congo clawless otter *Aonyx congicus*
1009 Mustelidae, Lutrinae, a review of its systematics, distribution and conservation status. *Af Zool*
1010 44: 159-170.
- 1011 Jeugd van der HP, Prins HHT (2000) Movements and group structure of giraffe (*Giraffa*
1012 *camelopardalis*) in Lake Manyara National Park, Tanzania. *J Zool* 251: 15–21.
- 1013 Johnson CK, Tinke MT, Estes JA, Conrad PA, Staedler M, Miller MA., Jessup DA, Mazet JAK
1014 (2009) Prey choice and habitat use drive sea otter pathogen exposure in a resource-limited
1015 coastal system. *PNAS* 106: 2242-2247.
- 1016 Johnson DDP, MacDonald DW, Dickman A (2000) An analysis and review of models of the
1017 sociobiology of the Mustelidae. *Mam Rev* 30: 171-196.
- 1018 Johnson DDP, Kays R, Blackwell PG, Macdonald DW (2002) Does the resource dispersion
1019 hypothesis explain group living? *TREE* 17: 563-570.
- 1020 Johnstone RA (2000) Models of reproductive skew, a review and synthesis. *Ethology* 106: 5-26.
- 1021 Kalz B, Jewgenow K, Fickel J (2006) Structure of an otter (*Lutra lutra*) population in Germany –
1022 results of DNA and hormone analyses from faecal samples. *Mamm Biol* 71: 321-335.
- 1023 Kanchanasakha BK (2007) Food Habitats of the Hairy-nosed otter *Lutra sumatrana* and the
1024 Small clawed otter *Amblonyx cinerea* in Pru Toa Daeng Peat Swamp Rorest, Southern
1025 Thailand. Xth International Otter Colloquium Hwacheon, South Korea.
- 1026 Kappeler PM, Wimmer B, Zinner D, Tautz D (2002) The hidden matrilineal structure of a solitary
1027 lemur. implications for primate social evolution. *Proc R Soc B* 269: 1755-1763.
- 1028 Kasper CB, Feldens MJ, Salvi J, Grillo HCZ (2004) Preliminary study by the ecology of *Lontra*
1029 *longicaudis* (Olfers) (Carnivora, Mustelidae) in Taquari Valley, South Brazil. *Rev Bras Zool*
1030 21: 65-72.

- 1031 Kasper CB, Bastazini VAG, Salvi J, Hamilton CZG (2008) Trophic ecology and the use of
1032 shelters and latrines by the Neotropical otter *Lontra longicaudis* in the Taquari Valley,
1033 Southern Brazil Iheringia. Zoologia 98: 469-474.
- 1034 Kays RW, Gittleman JL (2001). The social organization of the kinkajou *Potos flavus*
1035 (Procyonidae). Journal of Zoology. 253. 491 - 504.
- 1036 Kays RW, Gittleman JL, Wayne RK (2000) Microsatellite analysis of kinkajou social
1037 organization. Mol Ecol 9: 743-751.
- 1038 Keane B, Waser PM, Creel SR, Creel NM, Elliott LF, Minchella DJ (1994) Subordinate
1039 reproduction in dwarf mongooses. Anim Behav 47: 65-75.
- 1040 Keller L (1997) Indiscriminate altruism, unduly nice parents and siblings. TREE 12: 99-103.
- 1041 Khan WA, Qasim M, Ahmad E, Chaudhry AA, Bhaagat HB, Akhtar M (2010) Status of Smooth
1042 Coated Otter. *Lutrogale perspicillata sindica*. in Pakistan. Pak J Zool 42: 817-824.
- 1043 Koenig WD, Pitelka FA, Carmen WJ, Mumme RL, Stanback MT (1992) The evolution of delayed
1044 dispersal in cooperative breeders. Q Rev Biol 67: 111-150.
- 1045 Koepfli KP, Deere KA, Slater GJ, Begg C, Begg K, Grassman L, Lucherini M, Veron G, Wayne
1046 RK (2008) Multigene phylogeny of the Mustelidae, Resolving relationships, tempo and
1047 biogeographic history of a mammalian adaptive radiation. B M C Biol 6: 10.
- 1048 Koepfli KP, Wayne RK (1998) Phylogenetic relationships of otters. Carnivora, Mustelidae.
1049 based on mitochondrial cytochrome B sequences. J Zool Lond 246: 401-416.
- 1050 Kokko H, Ekman J (2002) Delayed dispersal as a route to breeding; territorial inheritance, 'safe
1051 havens' and ecological constraints. Am Nat 160: 468-484.
- 1052 Kokko H, Johnstone RA (1999) Social queuing in animal societies. a dynamic model of
1053 reproductive skew. Proc R Soc Lond B Biol Sc 266: 571-578.
- 1054 Komdeur J (1992) Importance of habitat saturation and territory quality for evolution of
1055 cooperative breeding in the seychelles warbler. Nature 358: 493-495.
- 1056 Komdeur J (1996) Influence of helping and breeding experience on reproductive performance in
1057 the Seychelles warbler. A translocation experiment. Behav Ecol 7: 326-333.
- 1058 Komdeur J (2006) Variation in individual investment strategies among social animals. Ethology
1059 112: 729-747.
- 1060 Krause J, Ruxton GD (2002) Living in groups. Oxford University Press, Oxford.
- 1061 Krkosek M, Lauzon-Guay JS, Lewis MA (2007) Relating dispersal and range expansion of
1062 California sea otters. Theor Pop Biol 71: 401-407.
- 1063 Kruuk H (1995) Wild Otters, predation and populations. Oxford University Press, Oxford.
- 1064 Kruuk H (2006) Otters. ecology, behavior and conservation. Oxford University Press, Oxford.
- 1065 Kruuk H, Moorehouse A (1991) The spatial organization of otters *Lutra lutra* in Shetland. J Zool
1066 224: 41-57.

- 1067 Kruuk H, Kanchanasaka B, O'Sullivan S, Wanghongsa S (1994) Niche separation in 3 sympatric
1068 otters *Lutra perspicillata*, *Lutra Aonyx cinerea* in Huai-Kha-Khaeng, Thailand. Biol Conserv
1069 69: 115-120.
- 1070 Kruuk H, Goudswaard PC (1990) Effects of changes in fish populations in Lake Victoria on the
1071 food of otters *Lutra maculicollis* Schinz and *Aonyx capensis* Lichtenstein. Afr J Zool 28: 322-
1072 329.
- 1073 Ladds Z, Hoppitt W, Boogert NJ (2017) Social learning in otters. R Soc open sci 30:4(8)
1074 170489. <http://dx.doi.org/10.1098/rsos.170489>.
- 1075 Laidre KL, Jameson RJ, Gurarie E, Jeffries SJ, Allen H (2009) Spatial habitat use patterns of
1076 sea otters in coastal Washington. J Mamm 90: 906-917.
- 1077 Larivière S (1999) *Lontra provocax*. Mammal Sp 610: 1-4.
- 1078 Larivière S (2001) *Aonyx congicus*. Mammal Sp 650: 1-3.
- 1079 Larivière S (2003) *Amblonyx cinereus*. Mammal Sp 720:1-5.
- 1080 Larivière S, Walton LR (1998) *Lontra canadensis*. Mammal Sp 587: 1-8.
- 1081 Le Galliard JF, Rémy A, Ims RA, Lambin X (2012) Patterns and processes of dispersal
1082 behaviour in arvicoline rodents. Mol Ecol 21: 505–523.
- 1083 Lejeune A (1989) Ethologie des loutres *Hydrictis maculicollis* au lac Muhazi, Rwanda.
1084 Mammalia 53: 191-202.
- 1085 Lemasson A, Palombit RA, Jubin R (2008) Friendships between males and lactating females in
1086 a free-ranging group of olive baboons (*Papio hamadryas anubis*). Evidence for playback
1087 experiments. Behav Ecol Sociobiol 62: 1027-1035.
- 1088 Lemasson A, Mikus MA, Blois-Heulin C, Lodé T (2013) Social partner discrimination based on
1089 sounds and scents in Asian small-clawed otters (*Aonyx cinereus*). Naturwissenschaften 100:
1090 275-279.
- 1091 Leuchtenberger C, Mourão G (2008) Social organization and territoriality of giant otters.
1092 Carnivora, Mustelidae in a seasonally flooded savanna in Brazil. Sociobiology 52: 257-270.
- 1093 Leuthold BM (1979) Social organization and behaviour of giraffe in Tsavo East National Park.
1094 Afr J Ecol 17: 19–34.
- 1095 Ligon JD, Ligon SH (1983) Reciprocity in the green woodhoopoe *Phoeniculus purpureu*. Anim
1096 Behav 31: 480-489.
- 1097 Lodé T (1996a) Conspecific tolerance and sexual segregation in the use of space and habitats
1098 in the European polecat. Acta Ther 41: 171-176.
- 1099 Lodé T (1996b) Polecat predation on frogs and toads at breeding sites in western France. Ethol
1100 Ecol Evol 8: 115-124.
- 1101 Lodé T. 1997 - Trophic status and feeding habits of the European Polecat *Mustela putorius* L.,
1102 1758. *Mammal Review* 27: 177-184
- 1103 Lodé T (2000) Functional response and area-restricted search of a predator, seasonal
1104 exploitation of anurans by European polecat *Mustela putorius*. Austral Ecol 25: 223-231.

- 1105 Lodé T (2001) Mating system and genetic variance in a polygynous mustelid, the European
1106 polecat. *Genes Gen Systems* 76: 221-227.
- 1107 Lodé T (2002) Endangered species as indicator of freshwater quality, fractal diagnosis using
1108 fragmentation within European mink population. *Archiv für Hydrobiol* 155: 163-176.
- 1109 Lodé T (2008) Kin recognition versus familiarity in a solitary mustelid, the European polecat
1110 *Mustela putorius*. *C R Biol* 331: 248-254.
- 1111 Lodé T, Pereboom V, Berzins R (2003) Implications of an individualistic lifestyle for species
1112 conservation, lessons from jealous beasts. *C R Biol* 326: S30-S36.
- 1113 Luca DW, Ginsberg JR (2001) Dominance, reproduction and survival in banded mongooses,
1114 towards an egalitarian social system? *Anim Behav* 61: 17-30.
- 1115 Ludwig GX, Hokka V, Sulkava R, Ylönen H (2002) Otter *Lutra lutra*. predation on farmed and
1116 free-living salmonids in boreal freshwater habitats. *Wildl Biol* 8: 203-208.
- 1117 Macdonald DW (1983) The ecology of carnivore social behavior. *Nature* 301: 379-384.
- 1118 Macdonald DW, Sillero-Zubiri C (2004) The biology and conservation of wild canids. Oxford
1119 Univ Press, Oxford.
- 1120 Macdonald D, Newman C (2018) Musteloid sociality: the grass-roots of society. In: Macdonald
1121 D, Newman C, Lauren AH (eds) *Biology and conservation of musteloid*, pp. 167-188.
- 1122 MacShane LJ, Estes JA, Riedman ML, Staedler MM (1995) Repertoire, structure and individual
1123 variation of vocalizations in the sea otter. *J Mam* 76: 414-427.
- 1124 Mangel JC, Whitty T, Medina Vogel G, Alfaro Shigueto J, Caceres C, Godley BJ (2010)
1125 Latitudinal variation in diet and patterns of human interaction in the marine otter. *Mar Mamm*
1126 *Sc* 27: 14-25.
- 1127 Manser MB (1999) Response of foraging group members to sentinel calls in suricates, *Suricata*
1128 *suricatta*. *Proc R Soc. B* 266: 1013-1019.
- 1129 Manser MB (2001) The acoustic structure of suricates' alarm calls varies with predator type and
1130 the level of response urgency. *Proc R Soc B* 268: 2315-2324.
- 1131 Mason CF, Macdonald SM (1986) *Otters - ecology and conservation*. Cambridge Univ. Press,
1132 Cambridge.
- 1133 Mbizah MM, Valeix M, Macdonald DW & Loveridge AJ (2019). Applying the resource dispersion
1134 hypothesis to a fission–fusion society: A case study of the African lion (*Panthera leo*). *Ecol*
1135 *Evol.* 9(16): 9111–9119.
- 1136 Mech DL, Boitani L (2003) *Wolves, behavior, ecology and conservation*. Univ. Chicago Press,
1137 Chicago.
- 1138 Medina-Vogel G, Gonzalez-Lagos C (2008) Habitat use and diet of endangered southern river
1139 otter *Lontra provocax* in a predominantly palustrine wetland in Chile. *Wildl Biol* 14: 211-220.
- 1140 Medina-Vogel G, Bartheld JL, Pacheco RA, Delgado R (2006) Population assessment and
1141 habitat use of marine otter *Lontra felina* in southern Chile. *Wildl Biol* 12: 191-199.

- 1142 Medina-Vogel G, Boher F, Flores G, Santibanez A, Soto-Azat C (2007) Spacing behavior of
1143 marine otters. *Lontra felina*. in relation to land refuges and fishery wastes in Central Chile. J
1144 Mammal 88: 487-494.
- 1145 Medina-Vogel G, Delgado C, Alvarez RE (2004) Feeding ecology of the marine otter *Lutra felina*
1146 in a rocky seashore of the south of Chile. Mar Mamm Sci 20: 134-144.
- 1147 Melquist WE, Hornocker MG (1983) Ecology of river otters in west central Idaho. Wildl Monogr
1148 83: 1-60.
- 1149 Mitani JC, Merriwether DA, Zhang C (2000) Male affiliation, cooperation and kinship in wild
1150 chimpanzees. Anim Behav 59: 885-893.
- 1151 Möller LM, Beheregaray LB, Harcourt RG, Krutzen M (2001) Alliance membership and kinship
1152 in wild male bottlenose dolphins (*Tursiops aduncus*) of southeastern Australia. Proc R Soc B
1153 268: 1941-1947.
- 1154 Monson DH, Estes JA, Bodkin JL, Siniff DB (2000) Life history plasticity and population
1155 regulation in sea otters. Oikos 90: 457-468.
- 1156 Mosser A, Packer C (2009) Group territoriality and the benefits of sociality in the African lion,
1157 *Panthera leo*. Anim Behav 78: 359-370.
- 1158 Newman DC, Griffin CR (1994) Wetland use by river otters in Massachusetts. J Wildl Manag 58:
1159 18-23.
- 1160 Nguyen XD (2005) Current status of otters Mammalia Lutrinae in Viet Nam with conservation
1161 implications. Tiger Paper 33: 8-14.
- 1162 Nguyen XD, Pham TA, Le HT (2001) New Information about the Hairy-Nosed Otter *Lutra*
1163 *sumatrana* in Vietnam. IUCN Otter Sp Group Bull 18: 64-75.
- 1164 Nonacs P (2000) Measuring and using skew in the study of social behavior and evolution. Am
1165 Nat 6: 577-589.
- 1166 Okasha S (2002) Genetic relatedness and the evolution of altruism. Phil Science 69: 138-149.
- 1167 Ostfeld R, Ebersperger L, Klosterman L, Castilla J (1989) Foraging, activity budget, and social
1168 behavior of the South American marine otter *Lutra felina*. Nat Geog Res 5: 422-438.
- 1169 Packer C (1977) Reciprocal altruism in *Papio Anubis*. Nature 265: 441-443.
- 1170 Packer C, Ruttan L (1988) The evolution of cooperative hunting. Am Nat 132: 159-198.
- 1171 Packer C, Gilbert DA, Pusey AE, O'Brien SJ (1991) A molecular genetic analysis of kinship and
1172 cooperation in African lions. Nature 351: 562-565.
- 1173 Pagacz S, Witczuk J (2010) Intensive exploitation of amphibians by Eurasian otter *Lutra lutra* in
1174 the Wolosaty stream, southern Poland. Ann Zool Fenn 47: 403-410.
- 1175 Parker DM, Burchell RK, Bernard RTF (2005) The diet of Cape clawless otters at two sites
1176 along the Bloukrans River, Eastern Cape Province, South Africa. Af Zool 40: 330-334.
- 1177 Pardini R (1998) Feeding Ecology of the Neotropical River Otter *Lontra longicaudis* in an
1178 Atlantic Forest Stream, south-eastern Brazil. J Zool 245: 385-391.

- 1179 Pearson HC, Davis RW (2005) Behavior of territorial male sea otters in Prince William Sound,
1180 Alaska. *Aquatic Mammals* 31: 226-233.
- 1181 Pellis SM (1984) Some Aspects of Play-Fighting in a Captive Group of Oriental Small-Clawed
1182 Otters, *Amblonyx cinerea*. *Z Tierpsychol (Ethology)* 65: 77-83.
- 1183 Pennisi E (2005) How did cooperative behavior evolve. *Science* 309: 93558.
- 1184 Perdue BM, Snyder RJ, Maple TL (2013) Cognitive Research in Asian Small-Clawed Otters. *Int*
1185 *J Comp Psychol* 26: 105-113.
- 1186 Perinchery A (2008) Conservation genetics of Indian otters and their habitat use in Eravikulam
1187 National Park. Ph.D. Thesis Manipal Univ, Manipal, India.
- 1188 Perinchery A, Jathanna D, Kumar A (2011) Factors determining occupancy and habitat use by
1189 Asian small-clawed otters in the Western Ghats, India. *J Mammal* 92: 796-802.
- 1190 Perrin MR, D'inzillo Carranza I (2000) Habitat use by spotted-necked otters in the KwaZulu-
1191 Natal Drakensberg. *Afr J Wildl Res* 30: 8-14.
- 1192 Perrin N, Mazalov V (2000) Local competition, inbreeding and the evolution of sex-biased
1193 dispersal. *Am Nat* 155: 116-127.
- 1194 Pope TR (1990) The reproductive consequences of male cooperation in the red howler monkey,
1195 paternity exclusion in multi-male and single-male troops using genetic markers. *Behav Ecol*
1196 *Sociobiol* 27: 439-446.
- 1197 Powell RA (1979) Mustelid spacing patterns, variations on a theme by *Mustela*. *Z Tierpsychol*
1198 50: 153-165.
- 1199 Prakash N (2010). Factors influencing the occurrence and habitat use of small- clawed otters
1200 (*Aonyx cinerea*) in the human-modified landscape of Western Ghats, South India. Thesis,
1201 Nat. Cent. Biol. Sciences, Tata Institute of Fundamental Research. India.
- 1202 Prigioni C, Balestrieri A, Remonti L, Gargaro A, Priore G (2006) Diet of the Eurasian otter *Lutra*
1203 *lutra*. in relation to freshwater habitats and alien fish *species* in southern Italy. *Ethol Ecol Evol*
1204 18: 307-320.
- 1205 Prox, LM, Farine DR (2020) A framework for conceptualizing dimensions of social organization
1206 in mammals. *Ecology & Evolution* 10: 791-807.
- 1207 Pusey AE (1987) Sex-biased dispersal and inbreeding avoidance in birds and mammals. *TREE*
1208 2: 295-299.
- 1209 Quaglietta L, Fonseca da Silva V, Mira A, Boitani L (2014) Sociospatial organization of a solitary
1210 carnivore, the Eurasian otter (*Lutra lutra*). *J Mamm* 95: 140-150. 10.1644/13-MAMM-A-
1211 073.1.
- 1212 Raha A, Hussain SA (2016) Factors affecting habitat selection by three sympatric otter species
1213 in the southern Western Ghats, India. *Acta Ecol Sin* 36:45-49.
1214 10.1016/j.chnaes.2015.12.002.
- 1215 Ratnayeke S, Tuskan GA, Pelton MR (2002) Genetic relatedness and female spatial
1216 organization in a solitary carnivore, the raccoon, *Procyon lotor*. *Mol Ecol* 11: 1115-1124.

- 1217 Ray J (1997) Comparative ecology of two African forest mongooses, *Herpestes naso* and *Atilax*
1218 *paludinosus*. *Af J Ecol* 35: 237-253.
- 1219 Reeve HK, Keller L (1995) Partitioning of reproduction in mother-daughter versus sibling
1220 associations, a test of optimal skew theory. *Am Nat* 145: 119-132.
- 1221 Reiczigel J, Lang Z, Rózsa L, Tóthmérész B (2008) Measures of sociality, two different views of
1222 group size. *Anim Behav* 75: 715-721.
- 1223 Reid DG, Code TE, Reid ACH, Herrero SM (1994) Food habits of the river otter in a boreal
1224 ecosystem. *Can J Zool* 72: 1306-1313.
- 1225 Remonti L, Prigioni C, Balestrieri A, Sgrosso S, Priore G (2008) Trophic flexibility of the otter
1226 (*Lutra lutra*) in southern Italy. *Mamm Biol* 73: 293–302.
- 1227 Revilla E (2003) Moving beyond the resource dispersion hypothesis. *TREE* 18: 380.
- 1228 Revilla E, Palomares F (2002) Spatial organization, group living and ecological correlates in
1229 low-density populations of Eurasian badgers, *Meles meles*. *J Anim Ecol* 71: 497-512.
- 1230 Rheingantz ML, Waldemarin HF, Rodrigues L, Multon TP (2011) Seasonal and spatial
1231 differences in feeding habits of the Neotropical otter *Lontra longicaudis*. *Carnivora*,
1232 *Mustelidae*. in a coastal catchment of southeastern. *Brazil Zool* 28: 37-44.
- 1233 Ribas C, Cunha H, Damasceno G, Magnusson W, Solé-Cava A, Mourão G (2015) More than
1234 meets the eye: kinship and social organization in giant otters (*Pteronura brasiliensis*). *Behav*
1235 *Ecol Sociobiol* 70. 10.1007/s00265-015-2025-7.
- 1236 Riedman ML, Estes JA (1990) The sea otter (*Enhydra lutris*): behavior, ecology, and natural
1237 history. U.S. Fish and Wildl Serv Biol Report 90 (14) : Washington, D.C.
- 1238 Rock KR, Rock ES, Bowyer RT, Faro JB (1994) Degree of association and use of a helper by
1239 coastal river otters, *Lutra canadensis*, in Prince William Sound, Alaska. *Can Field Nat* 108:
1240 367-369.
- 1241 Rosas FCW, Zuanon JAS, Carter SK (1999) Feeding Ecology of the Giant Otter, *Pteronura*
1242 *brasiliensis*. *Biotropica* 31: 502-506.
- 1243 Rowe-Rowe DT, Somers MJ (1998) Diet, foraging behaviour and coexistence of African otters
1244 and the water mongoose. *Symp Zool Soc Lond* 71: 216-227.
- 1245 Rubenstein DR, Lovette IJ (2007) Temporal environmental variability drives the evolution of
1246 cooperative breeding in birds. *Curr Biol* 17: 1414-1419.
- 1247 Ruckstuhl KE, Neuhaus P (2000) Sexual segregation in ungulates, a new approach. *Behavior*
1248 137, 361-377
- 1249 Sachs JL (2004) The Evolution of Cooperation. *Quart Rev Biol* 79: 135-160.
- 1250 Schradin C, Pillay N (2005) Intraspecific variation in the spatial and social organization of the
1251 African striped mouse. *J Mammal* 86: 99–107.
- 1252 Schröpfer R, Wiegand P, Hogrefe HH (1997) The implications of territoriality for the social
1253 system of the European pine marten *Martes martes* (L. 1758). *Z Säugetierk* 62: 209-218.

- 1254 Sepúlveda MA, Bartheld JL, Monsalve R, Gómez V, Medina-Vogel G (2007) Habitat use and
1255 spatial behaviour of the endangered Southern river otter *Lontra provocax* in riparian habitats
1256 of Chile, conservation implications. *Biol Conserv* 140: 329-338.
- 1257 Sepúlveda MA, Bartheld JL, Meynard C, Astorga C, Benavides M, Parra D, Medina-Vogel G
1258 (2009) Landscape features and crustacean prey as predictors of the Southern river otter
1259 (*Lontra provocax*) distribution in Chile. *Anim Conserv* 12: 522-530.
- 1260 Shannon JS (1991) Social organization and behavioral ontogeny of otters *Lutra Canadensis* in a
1261 coastal habitat in northern California. *Bull Otter Specialist Group* 4: 8-13.
- 1262 Schmelz M, Duguid S, Bohn M, Volter C (2017) Cooperative problem solving in giant otters
1263 (*Pteronura brasiliensis*) and Asian small-clawed otters (*Aonyx cinerea*). *Anim Cogn* 20:1107.
1264 <https://doi.org/10.1007/s10071-017-1126-2>
- 1265 Sherman PW (1977) Nepotism and the evolution of alarm calls. *Science* 197: 1246-1253.
- 1266 Shorey L, Piertney S, Stone J, Hoglund J (2000) Fine scale genetic structuring on *Manacus*
1267 *manacus* leks. *Nature* 408: 352-353.
- 1268 Silk JB (2007) The adaptive value of sociality in mammalian groups. *Phil. Trans. R. Soc. B-Biol.*
1269 *Sci.* 362: 539-559.
- 1270 Sivasothi N (1996) The Small-clawed otter, *Amblonyx cinereus* (Illiger, 1815) (Carnivora.
1271 Mustelidae. Lutrinae), the second resident wild carnivore in Singapore. Report of a family
1272 group on Pulau Tekong Besar and of the fate of wildlife there. *The Pangolin*, 7: 23-31.
- 1273 Sivasothi N, Nor BHM (1994) A review of otters (Carnivora. Mustelidae. Lutrinae) in Malaysia
1274 and Singapore. *Hydrobiologia* 285: 151-170.
- 1275 Sjöåsen T (1997) Movements and establishment of reintroduced European otters *Lutra lutra*. *J*
1276 *App Ecol* 34: 1070-1080.
- 1277 Smith JE, Kolowski JM, Graham KE, Dawes SE, Holekamp KE (2008) Social and ecological
1278 determinants of fission-fusion dynamics in the spotted hyaena. *Anim Behav* 76: 619-636.
- 1279 Smith JE, Swanson EM, Reed D, Holekamp KE (2012) Evolution of Cooperation among
1280 Mammalian Carnivores and Its Relevance to Hominin Evolution. *Curr Anthropol* 53: 436-452.
- 1281 Snowdon CT, Cronin KA (2007) Cooperative breeders do cooperate. *Behav Proc* 76: 138-141.
- 1282 Somers MJ (2000) Foraging behaviour of Cape clawless otters (*Aonyx capensis*) in a marine
1283 habitat. *J Zool Lond* 252: 473-480.
- 1284 Somers MJ, Nel JAJ (2003) Diet in relation to prey of Cape clawless otters in two rivers in the
1285 Western Cape Province, South Africa. *Afr J Ecol* 38: 317-326.
- 1286 Spong G, Stone J, Creel S, Bjorklund M (2002) Genetic structure of lions *Panthera leo* L. in the
1287 Selous Game Reserve, implications for the evolution of sociality. *J Evol Biol* 15: 945-953.
- 1288 Stiver KA, Fitzpatrick J, Desjardins JK, Balshine S (2006) Sex differences in rates of territory
1289 joining and inheritance in a cooperatively breeding cichlid fish. *Anim Behav* 71: 449-456.
- 1290 Townsend SW, Zöttl M, Manser MB (2011) All clear? Meerkats attend to contextual information
1291 in close calls to coordinate vigilance. *Behav Ecol Sociobiol* 65:1927-1934

- 1292 Trivers RL (1971) The evolution of reciprocal altruism. *Q Rev Biol* 46: 35-57.
- 1293 Tyack P (1986) Population biology, social behavior and communication in whales and dolphins.
1294 *TREE* 1:144-150.
- 1295 Valqui J (2011) The marine otter *Lontra felina* (Molina, 1782). A review of its present status and
1296 implications for future conservation. *Mammal Biol (Z Säugetierk)* 77: 75–83.
- 1297 Vehrencamp SL (1983) Optimal degree of skew in cooperative societies. *Am Zool* 23: 327-335.
- 1298 Verdolin JL (2009) Gunnison's prairie dog *Cynomys gunnisoni* testing the resource dispersion
1299 hypothesis. *Behav Ecol Sociobiol* 63: 789-799.
- 1300 Véron G, Colyn M, Dunham A, Taylor P, Gaubert P (2004) Molecular systematics and origin of
1301 sociality in mongooses Herpestidae Carnivora. *Mol Phyl Evol* 30: 582-598.
- 1302 Villegas MJ, Aron A, Ebensperger LA (2007) The influence of wave exposure on the foraging
1303 activity of marine otter, *Lontra felina* (Molina, 1782) (Carnivora Mustelidae) in northern Chile.
1304 *J Ethol* 25: 281-286.
- 1305 Wagner AP, Creel S, Frank LG, Kalinowski ST (2007) Patterns of relatedness and parentage in
1306 an asocial, polyandrous striped hyena population. *Mol Ecol* 16: 4356-4369.
- 1307 Waser PM, Keane B, Creel SR, Elliot LG, Minchella DJ (1994) Possible male coalitions in a
1308 solitary mongoose. *Anim Behav* 47: 289-294.
- 1309 Wasser SK, Barash DP (1983) Reproductive suppression among female mammals, implications
1310 for biomedicine and sexual selection theory. *Quart Rev Biol* 58: 513-538.
- 1311 Weber JM (1990) Seasonal exploitation of amphibians by otters *Lutra lutra* in north-east
1312 Scotland. *J Zool* 220: 641-651.
- 1313 West SA, Griffin AS, Gardner A (2007) Evolutionary explanations for cooperation. *Curr Biol* 17:
1314 R661-R672
- 1315 West SA, Pen I, Griffin AS (2002) Cooperation and competition between relatives. *Science* 296:
1316 72-75.
- 1317 Wickler W, Seibt U (1993) Pedogenetic sociogenesis via the 'siblingroute' and consequences
1318 for *Stegodyphus* spiders. *Ethology* 95: 1-18.
- 1319 Williams DA, Rabenold KN (2005) Male-biased dispersal, female philopatry and routes to
1320 fitness in a social corvid. *J Anim Ecol* 74: 150-159.
- 1321 Wilson DS (1990) Weak Altruism, Strong Group Selection. *Oikos* 59: 135-148.
- 1322 Wrangham RW, Rubenstein DI (1986) Social evolution in birds and mammals. In: Rubenstein
1323 DI, Wrangham RW (eds) *Ecological aspects of social evolution in birds and mammals*.
1324 Princeton Univ. Press, Princeton, New Jersey: pp 452-470.
- 1325 Wright J, Berg H, De Kort SR, Khazin V, Maklakov AA (2001) Cooperative sentinel behaviour in
1326 the Arabian babbler. *Anim Behav* 62: 973-979.
- 1327 Yamagiwa J, Kahekwa J, Kanyunyi Basabose A (2003) Intra-specific variation in social
1328 organization of gorillas. implications for their social evolution. *Primates* 44: 359-369.

- 1329 Yamaguchi N, Sarno RJ, Jhonson WE, O'Brien S, Macdonald DW (2004) Multiple Paternity and
1330 Reproductive Tactics of Free-Ranging American Minks, *Mustela vison*. J. Mammal., 85, 3,
1331 432–439, <https://doi.org/10.1644/1383939>
- 1332 Ylönen H, Brown JS (2007) Fear and the Foraging, Breeding and Sociality in Rodents. In: Wolff
1333 JO, Sherman PW (eds) Rodent Societies. Univ Chicago Press, Chicago: pp. 328-341.
- 1334 Young AJ, Carlson AA, Monfort SL, Russell AF, Bennett NC, Clutton-Brock TH (2006) Stress
1335 and the suppression of subordinate reproduction in cooperatively breeding meerkats. PNAS
1336 103: 12005-12010.
- 1337

Author's post-print

1338 **Table I.** Social traits of 14 otter species. Family structure refers to pairs, social structure
 1339 refers to extended family and highly social structure refers to groups including
 1340 helpers.

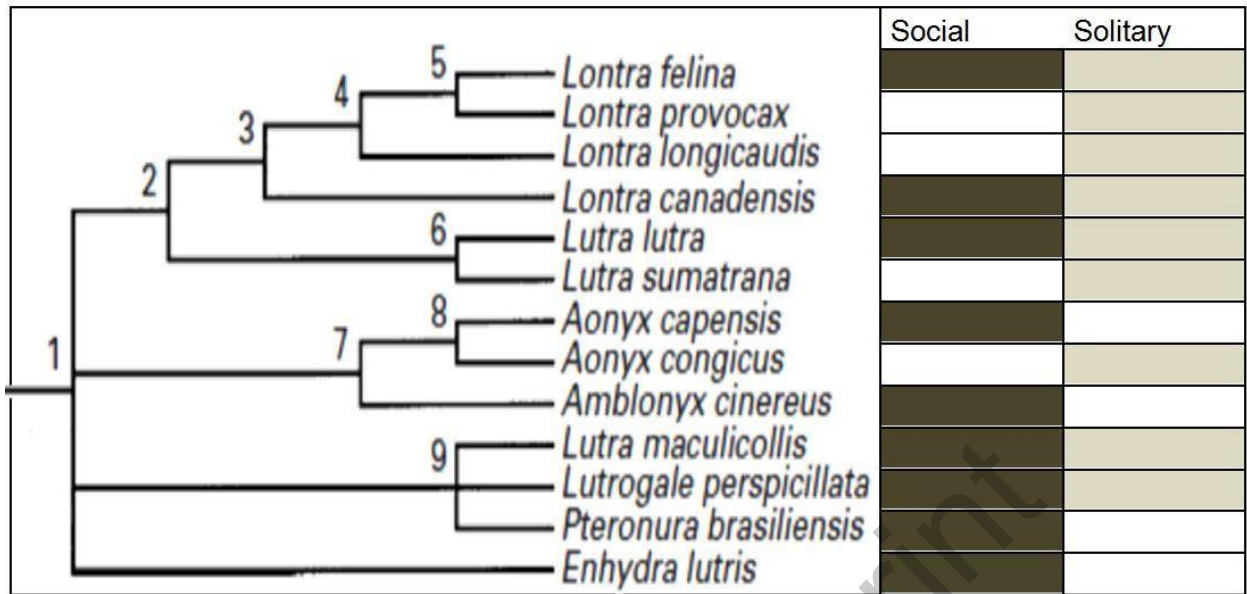
Species		Habitat	Lifestyle	Parental investment
Congo clawless otter	<i>Aonyx congicus</i>	fresh rivers, ponds, marshes, lakes	solitary	female
Neotropical river otter	<i>Lontra longicaudis</i>	rivers, lakes, small streamlets, coast, lagoons	solitary	female
Hairy-nosed otter	<i>Lutra sumatrana</i>	fast flowing rivers, peat swamp, streams, mountain rivers	solitary	female
Japanese otter (Extinct)	<i>Lutra nippon</i>	fresh rivers, ponds, marshes	solitary	female
Southern river otter	<i>Lontra provocax</i>	fresh rivers, ponds, marshes	solitary	female
Spotted necked otter	<i>Lutra maculicollis</i>	lakes, large rivers	solitary or family group	female
Marine otter	<i>Lontra felina</i>	rocky coasts and seashores	family group, but sometimes solitary	pair
Smooth coated otter	<i>Lutrogale perspicillata</i>	large forested rivers, swamps	solitary or family group	female
European otter	<i>Lutra lutra</i>	fresh water ecosystems and rocky coasts	mostly solitary, sometimes social	female
Cape clawless otter	<i>Aonyx capensis</i>	marshes, rocky coasts and seashores, mangrove	solitary, family group or social	pair

Sea otter	<i>Enhydra lutris</i>	oceanic kelp forests	social	female or pair
Giant otter	<i>Pteronura brasiliensis</i>	Large low rivers, flooded rain forest, mangroves	highly social	helpers
North American river otter	<i>Lontra canadensis</i>	fresh rivers, low rivers, ponds, lakes, marshes, rocky coasts	solitary, family group or highly social	helpers
Oriental small-clawed otter	<i>Aonyx cinerea</i>	large forested rivers, swamps, mangroves	family group or highly social	helpers

1341

1342

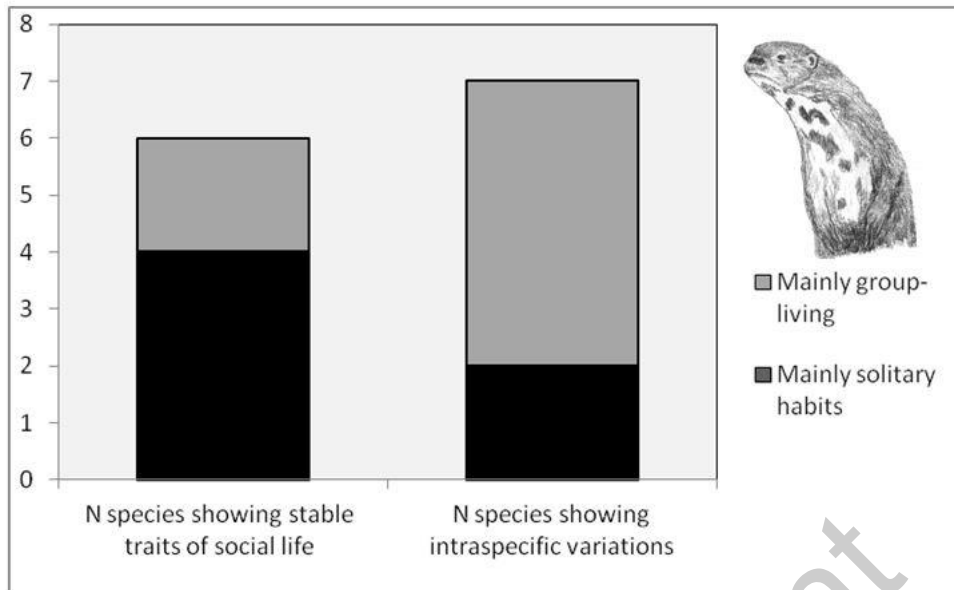
Author's post-print



1344

1345 **Fig. 1.** Phylogenetic relationships evaluated by a super-tree construction (maximum
 1346 parsimony, maximum likelihood and Bayesian inference methods, from Bininda-
 1347 Edmonds et al. 1999; Koepfli et al. 1998 and Koepfli et al. 2008) related to social life
 1348 characteristics for 13 otter species: marine otter (*Lontra felina*), southern river otter
 1349 (*Lontra provocax*), neotropical river otter (*Lontra longicaudis*), North American otter
 1350 (*Lontra canadensis*), European otter (*Lutra lutra*), hairy-nosed otter (*Lutra*
 1351 *sumatrana*), African clawless otter (*Aonyx capensis*), Congo clawless otter (*Aonyx*
 1352 *congicus*), small-clawed otter (*Amblonyx/Aonyx cinerea*), spotted-necked otter (*Lutra*
 1353 *maculicollis*), smooth-coated otter (*Lutrogale perspicillata*), giant otter (*Pteronura*
 1354 *brasiliensis*) and sea otter (*Enhydra lutris*). (Nodes 1-9 are numbered with bootstrap
 1355 and posterior probabilities).

1356

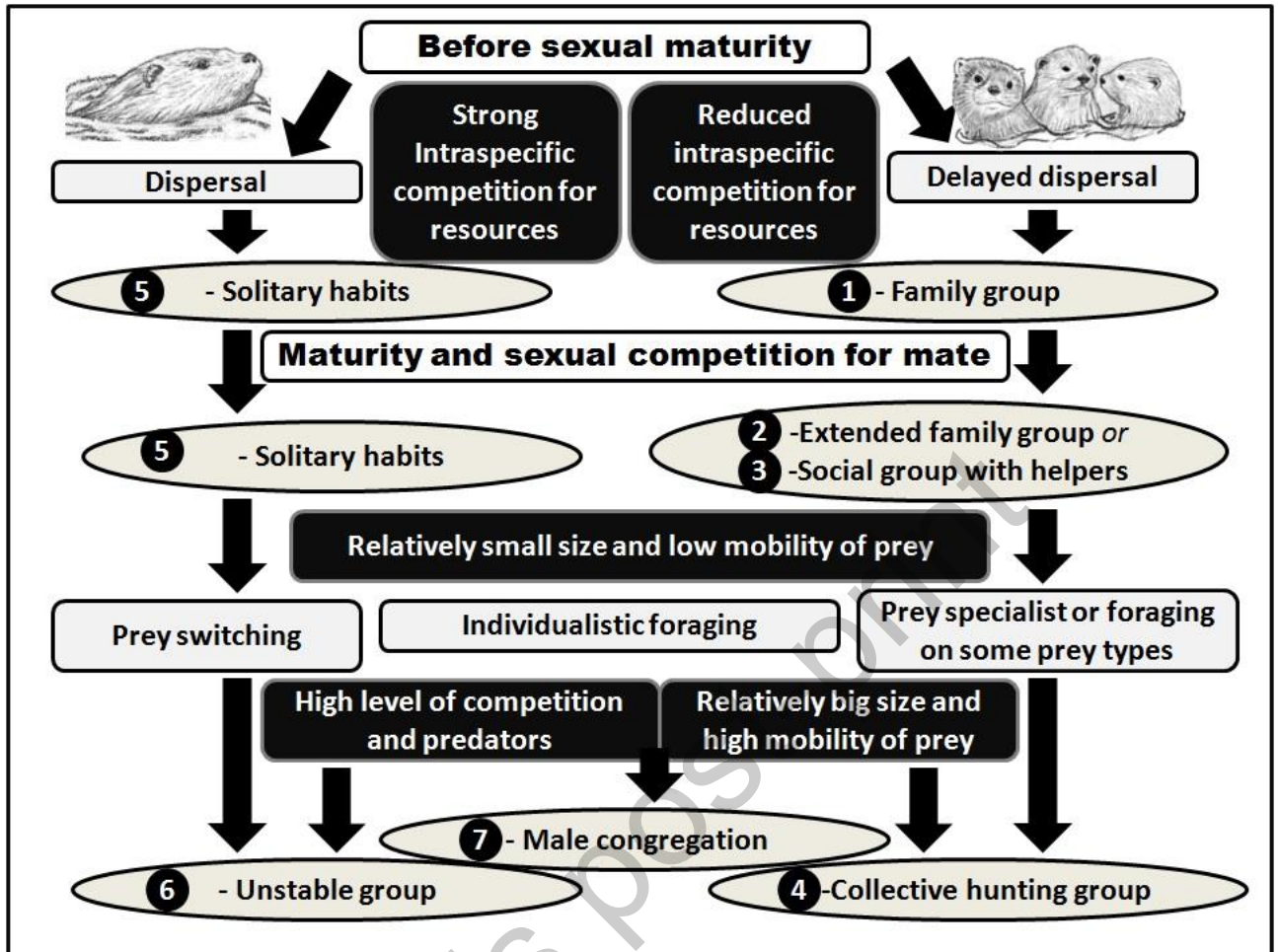


1357

1358 **Fig. 2.** Intraspecific variations of otters' social structures. European otters (*Lutra lutra*),
 1359 spotted necked otters (*Lutra maculicollis*), smooth-coated otters (*Lutrogale*
 1360 *perspicillata*), North American otters (*Lontra Canadensis*), marine otters (*Lontra*
 1361 *feline*), small-clawed otters (*Aonyx cinereus*) and African clawless otters (*Aonyx*
 1362 *capensis*) (54% of the studied species) present intraspecific variations whereas
 1363 Congo clawless otters (*Aonyx congicus*), giant otters (*Pteronura brasiliensis*), hairy-
 1364 nosed otters (*Lutra sumatrana*), neotropical river otters (*Lontra longicaudis*), sea
 1365 otters (*Enhydra lutris* and, southern river otters (*Lontra provocax*) (46%) present
 1366 stable social organizations.

1367

1368

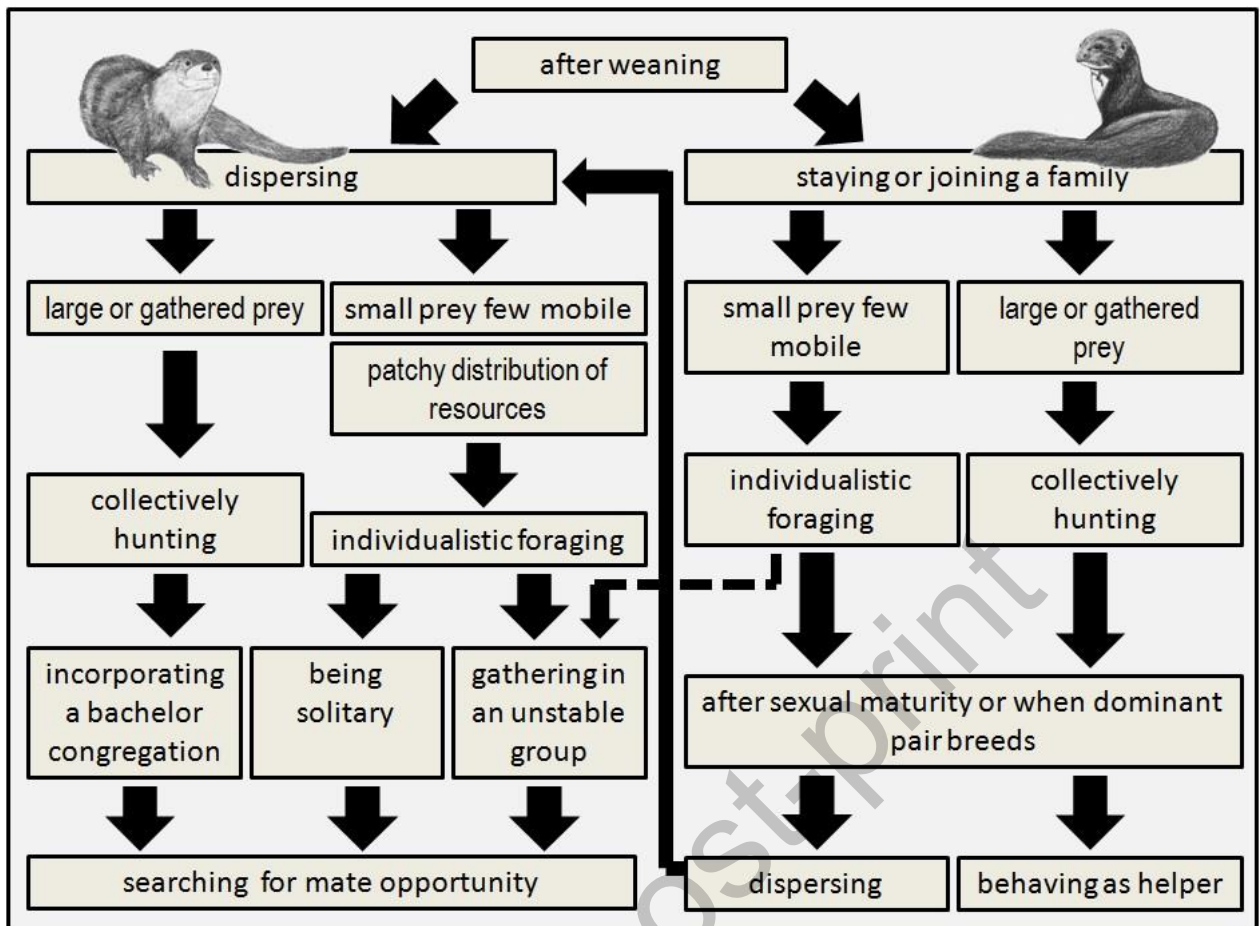


1370

1371 **Fig. 3.** Schematic representation of the socio-ecological predictions for otters' social
 1372 organization (SEB covariance model). White text on black: ecological factors
 1373 influencing social decisions; grey background: life style. Black circles: social life
 1374 types: **1)** *family group* (offspring disperse when they reach sexual maturity); **2)**
 1375 *extended family group*, often with an alpha dominant pair (several generations
 1376 cohabit); **3)** *social group with helpers*, generally with an alpha dominant pair; **4)**
 1377 *collective hunting group*; **5)** *solitary life-style* (offspring disperse soon after being
 1378 weaned); **6)** *mixed-sex unstable group* and **7)** *male social congregations*.

1379

1380



1381
 1382 **Fig. 4.** Sequence of individual step-by-step decisions following *sexual, ecological* and
 1383 *behavioural* covariance in otter species in which each step builds a more or less
 1384 temporary social organization. Individual otters have to make a number of decisions
 1385 after weaning: to disperse, to forage solitarily, to remain solitary or to join
 1386 opportunistically an unstable mixed-sex group or a bachelor group. If it remains in its
 1387 family group, it can forage either individualistically or collectively according to prey
 1388 type; sometimes, a family group can join an unstable group temporarily. When the
 1389 alpha pair breeds, offspring may disperse as in the first option or stay and behave as
 1390 a subordinate helper, if it is tolerated by the dominant.

1391