



**HAL**  
open science

## How should we diagnose and treat blastic plasmacytoid dendritic cell neoplasm patients?

Francine Garnache-Ottou, Chrystelle Vidal, Sabeha Biichlé, Florian Renosi, Eve Poret, Maïder Pagadoy, Maxime Desmarets, Anne Roggy, Estelle Seilles, Lou Soret, et al.

► **To cite this version:**

Francine Garnache-Ottou, Chrystelle Vidal, Sabeha Biichlé, Florian Renosi, Eve Poret, et al.. How should we diagnose and treat blastic plasmacytoid dendritic cell neoplasm patients?. *Blood Advances*, 2019, 3 (24), pp.4238-4251. 10.1182/bloodadvances.2019000647 . hal-02442440

**HAL Id: hal-02442440**

**<https://univ-rennes.hal.science/hal-02442440>**

Submitted on 10 Jul 2020

**HAL** is a multi-disciplinary open access archive for the deposit and dissemination of scientific research documents, whether they are published or not. The documents may come from teaching and research institutions in France or abroad, or from public or private research centers.

L'archive ouverte pluridisciplinaire **HAL**, est destinée au dépôt et à la diffusion de documents scientifiques de niveau recherche, publiés ou non, émanant des établissements d'enseignement et de recherche français ou étrangers, des laboratoires publics ou privés.

# How should we diagnose and treat blastic plasmacytoid dendritic cell neoplasm patients?

Francine Garnache-Ottou,<sup>1</sup> Chrystelle Vidal,<sup>2</sup> Sabeha Biichlé,<sup>1</sup> Florian Renosi,<sup>1</sup> Eve Poret,<sup>1</sup> Maïder Pagadoy,<sup>2</sup> Maxime Desmarests,<sup>2</sup> Anne Roggy,<sup>1</sup> Estelle Seilles,<sup>1</sup> Lou Soret,<sup>1</sup> Françoise Schillinger,<sup>3</sup> Sandrine Puyraimond,<sup>3</sup> Tony Petrella,<sup>4</sup> Claude Preudhomme,<sup>5</sup> Christophe Roumier,<sup>5</sup> Elisabeth A. MacIntyre,<sup>6</sup> Véronique Harrivel,<sup>7</sup> Yohan Desbrosses,<sup>8</sup> Bérengère Gruson,<sup>9</sup> Franck Geneviève,<sup>10</sup> Sylvain Thepot,<sup>11</sup> Yuriy Drebit,<sup>12</sup> Thibaut Leguay,<sup>13</sup> François-Xavier Gros,<sup>13</sup> Nicolas Lechevalier,<sup>14</sup> Pascale Saussoy,<sup>15</sup> Véronique Salaun,<sup>16</sup> Edouard Cornet,<sup>16</sup> Zehaira Benseddik,<sup>17</sup> Richard Veyrat-Masson,<sup>18</sup> Orianne Wagner-Ballon,<sup>19</sup> Célia Salanoubat,<sup>20</sup> Marc Maynadié,<sup>21</sup> Julien Guy,<sup>21</sup> Denis Caillot,<sup>22</sup> Marie-Christine Jacob,<sup>23</sup> Jean-Yves Cahn,<sup>24</sup> Rémy Gressin,<sup>24</sup> Johann Rose,<sup>25</sup> Bruno Quesnel,<sup>26</sup> Estelle Guerin,<sup>27</sup> Franck Trimoreau,<sup>27</sup> Jean Feuillard,<sup>27</sup> Marie-Pierre Gourin,<sup>27</sup> Adriana Plesa,<sup>28</sup> Lucile Baseggio,<sup>28</sup> Isabelle Arnoux,<sup>29</sup> Norbert Vey,<sup>30</sup> Didier Blaise,<sup>30</sup> Romaric Lacroix,<sup>31</sup> Christine Arnoulet,<sup>30</sup> Blandine Benet,<sup>32</sup> Véronique Dorvaux,<sup>33</sup> Caroline Bret,<sup>34</sup> Bernard Drenou,<sup>35</sup> Agathe Debliquis,<sup>35</sup> Véronique Latger-Cannard,<sup>36</sup> Caroline Bonmati,<sup>37</sup> Marie-Christine Bene,<sup>38</sup> Pierre Peterlin,<sup>39</sup> Michel Ticchioni,<sup>40</sup> Pierre-Simon Rohrlach,<sup>41</sup> Anne Arnaud,<sup>42</sup> Stefan Wickenhauser,<sup>43</sup> Valérie Bardet,<sup>44</sup> Sabine Brechignac,<sup>45</sup> Benjamin Papoular,<sup>45</sup> Victoria Ragueneau,<sup>46</sup> Jacques Vargaftig,<sup>47</sup> Rémi Letestu,<sup>48</sup> Daniel Lusina,<sup>48</sup> Thorsten Braun,<sup>45</sup> Vincent Foissaud,<sup>49</sup> Jérôme Tamburini,<sup>50</sup> Hind Bennani,<sup>51</sup> Nicolas Freynet,<sup>19</sup> Catherine Cordonnier,<sup>52</sup> Magali Le Garff-Tavernier,<sup>53</sup> Nathalie Jacques,<sup>53</sup> Karim Maloum,<sup>53</sup> Damien Roos-Weil,<sup>54</sup> Didier Bouscary,<sup>55</sup> Vahid Asnafi,<sup>6</sup> Ludovic Lhermitte,<sup>6</sup> Felipe Suarez,<sup>56</sup> Etienne Lengline,<sup>57</sup> Frédéric Féger,<sup>58</sup> Giorgia Battipaglia,<sup>59</sup> Mohamad Mohty,<sup>59</sup> Sabrina Bouyer,<sup>60</sup> Ouda Ghoul,<sup>60</sup> Elodie Dindinaud,<sup>60</sup> Caroline Basle,<sup>60</sup> Mathieu Puyade,<sup>61</sup> Carinne Lafon,<sup>62</sup> Thierry Fest,<sup>63</sup> Mikael Roussel,<sup>63</sup> Xavier Cahu,<sup>64</sup> Elsa Bera,<sup>65</sup> Sylvie Daliphard,<sup>65</sup> Fabrice Jardin,<sup>66</sup> Lydia Campos,<sup>67</sup> Françoise Solly,<sup>67</sup> Denis Guyotat,<sup>68</sup> Anne-Cécile Galois,<sup>69</sup> Alice Eischen,<sup>69</sup> Caroline Mayeur-Rousse,<sup>69</sup> Blandine Guffroy,<sup>70</sup> Christian Recher,<sup>71</sup> Marie Loosveld,<sup>29</sup> Alice Garnier,<sup>39</sup> Vincent Barlogis,<sup>72</sup> Maria Alessandra Rosenthal,<sup>40</sup> Sophie Brun,<sup>43</sup> Nathalie Contentin,<sup>66</sup> Sébastien Maury,<sup>73</sup> Mary Callanan,<sup>74</sup> Christine Lefebvre,<sup>75</sup> Natacha Maillard,<sup>61</sup> Patricia Okamba,<sup>32</sup> Christophe Ferrand,<sup>1</sup> Olivier Adotevi,<sup>1</sup> Philippe Saas,<sup>1</sup> Fanny Angelot-Delette,<sup>1</sup> Delphine Binda,<sup>1,2</sup> and Eric Deconinck<sup>1,8</sup>

<sup>1</sup>University of Bourgogne Franche-Comté, INSERM, Établissement Français du Sang Bourgogne/Franche-Comté, Unité Mixte de Recherche (UMR) 1098, RIGHT (Interactions Greffon-Hôte-Tumeur/Ingénierie Cellulaire et Génique), Besançon, France; <sup>2</sup>Centre Hospitalier Universitaire de Besançon, Centre d'Investigation Clinique 1431, INSERM, Besançon, France; <sup>3</sup>Laboratoire d'Hématologie, Établissement Français du Sang Bourgogne/Franche-Comté, Besançon, France; <sup>4</sup>Department of Pathology, University of Montréal, Hôpital Maisonneuve-Rosemont, Montréal, QC, Canada; <sup>5</sup>Laboratoire d'Hématologie, Centre Hospitalier Universitaire (CHU) Lille, Lille, France; <sup>6</sup>INSERM U1151, Université Sorbonne Paris Cité, Assistance Publique-Hôpitaux de Paris (AP-HP), Hôpital Necker-Enfants Malades, Laboratoire d'Onco-Hématologie, Paris, France; <sup>7</sup>Laboratoire d'Hématologie, CHU Hôpital Nord, Amiens, France; <sup>8</sup>Service d'Hématologie, CHU Besançon, Besançon, France; <sup>9</sup>Service d'Hématologie Clinique et Thérapie Cellulaire, CHU Hôpital Nord, Amiens, France; <sup>10</sup>Laboratoire d'Hématologie Institut de Biologie en Santé, CHU Angers, Angers, France; <sup>11</sup>Service des Maladies du Sang, Centre de Recherche en Cancérologie et Immunologie Nantes Angers, INSERM, CHU d'Angers, Angers, France; <sup>12</sup>Service d'Hématologie, Beziers, France; <sup>13</sup>Service d'Hématologie et de Thérapie Cellulaire and <sup>14</sup>Laboratoire d'Hématologie, Hôpital Haut-Lévêque, CHU Bordeaux, Pessac, France; <sup>15</sup>Cliniques Universitaires St-Luc, Brussels, Belgium; <sup>16</sup>Laboratoire d'Hématologie, CHU de Caen, Université de Caen Normandie, Caen, France; <sup>17</sup>Laboratoire de Biologie Médicale, Les Hôpitaux de Chartres, Chartres, France; <sup>18</sup>Laboratoire d'Hématologie, CHU Estaing 1, Clermont-Ferrand, France; <sup>19</sup>Département d'Hématologie Biologique, Hôpitaux Universitaires Henri Mondor, Créteil, France; <sup>20</sup>Service d'Hématologie, Centre Hospitalier (CH) Sud Francilien Site Jean Jaures, Corbeil-Essonnes, France; <sup>21</sup>Service d'Hématologie Biologique and <sup>22</sup>Service d'Hématologie Clinique, CHU Dijon Bourgogne, Dijon, France; <sup>23</sup>Service d'Immunologie Biologique, CHU de Grenoble, Grenoble, France; <sup>24</sup>Service d'Hématologie Clinique, CHU de Grenoble, Hôpital Michallon, Grenoble, France; <sup>25</sup>Laboratoire d'Hématologie, Centre Hospitalier du Mans, Le Mans, France; <sup>26</sup>Service d'Hématologie Clinique, Hôpital Claude Huriez, Lille, France; <sup>27</sup>Laboratoire d'Hématologie, CHU Dupuytren, Limoges, France; <sup>28</sup>Laboratoire d'Hématologie, Hospices Civils de Lyon, CH Lyon Sud, Pierre-Bénite, France; <sup>29</sup>Laboratoire d'Hématologie, CHU Timone, Marseille, France; <sup>30</sup>Service d'Hématologie, Institut Paoli-Calmettes, Aix-Marseille University, INSERM, Centre National de la Recherche Scientifique (CNRS), Centre de Recherche en Cancérologie de Marseille, Marseille, France; <sup>31</sup>Laboratoire d'Hématologie, Hôpital de la Conception, Marseille, France; <sup>32</sup>Centre Hospitalier Régional Metz-Thionville, Hôpital de Mercy, Metz, France; <sup>33</sup>Service d'Hématologie Clinique, Hôpital de Mercy, Ars-Laquenexy, France; <sup>34</sup>Service d'Hématologie Biologique, Montpellier, France; <sup>35</sup>Département d'Hématologie Clinique et Biologique, Groupe Hospitalier Régional de Mulhouse et Sud Alsace, Hôpital Emile Muller, Mulhouse, France; <sup>36</sup>Laboratoire d'Hématologie Biologique, Centre Hospitalier Régional Universitaire Nancy-Hôpitaux de Brabois, Vandoeuvre-les-Nancy, France; <sup>37</sup>Service d'Hématologie de Mercy, Hôpitaux de Brabois, Vandoeuvre-les-Nancy, France; <sup>38</sup>Service d'Hématologie Biologique, Pôle Laboratoires, CHU de Nantes, Hôtel-Dieu, Nantes, France; <sup>39</sup>Service Hématologie Clinique, CHU de Nantes, Nantes, France; <sup>40</sup>Laboratoire d'Immunologie, Hôpital l'Archet, CHU de Nice, Université Côte d'Azur, Nice, France; <sup>41</sup>Hématologie Clinique, Hôpital l'Archet, Nice, France; <sup>42</sup>Laboratoire d'Hématologie et Consultations d'Hématologie Biologique, Hôpital Universitaire Carêmeau, Nîmes, France; <sup>43</sup>Service d'Hématologie Clinique, Hôpital Universitaire Carêmeau, Institut de Cancérologie du Gard, Nîmes, France; <sup>44</sup>Service d'Hématologie-Immunologie-Transfusion, Hôpitaux Universitaires Paris Ile de France Ouest-Ambroise Paré, Université Versailles Saint Quentin-Paris Saclay, Paris France; <sup>45</sup>Service d'Hématologie Clinique, Hôpitaux Universitaires Paris Seine-Saint Denis, Bobigny, France; <sup>46</sup>Laboratoire d'Hématologie, CH André Mignot, Le Chesnay, France; <sup>47</sup>Service d'Hématologie-Médecine, Hôpital René Huguenin, Institut Curie, Saint-Cloud, France; <sup>48</sup>Laboratoire d'Hématologie, Hôpitaux Universitaires Paris Seine-Saint Denis, Hôpital Avicenne, Bobigny, France; <sup>49</sup>Laboratoire Biologie Médicale, Hôpital d'Instruction des Armées Percy, Clamart, France; <sup>50</sup>Service d'Hématologie Clinique, Hôpital Cochin, AP-HP, Paris, France; <sup>51</sup>Service Biologie

Submitted 12 July 2019; accepted 14 August 2019. DOI 10.1182/bloodadvances.2019000647.

For data sharing, please contact the corresponding author, Eric Deconinck (edeconinck@chu-besancon.fr).

The full-text version of this article contains a data supplement.

© 2019 by The American Society of Hematology

Clinique, Hôpital Foch, Suresnes, France; <sup>52</sup>Service d'Hématologie, Universitaires Henri Mondor, Créteil, France; <sup>53</sup>Service d'Hématologie Biologique, Groupe Hospitalo-Universitaire AP-HP Sorbonne Université, Site Pitié-Salpêtrière, Paris, France; <sup>54</sup>Sorbonne Université, Hôpital Pitié-Salpêtrière, AP-HP, Paris, France; <sup>55</sup>Service d'Hématologie Clinique, Hôpital Cochin, AP-HP, Paris, France; <sup>56</sup>Service d'Hématologie Clinique, Hôpital Necker-Enfants Malades, Paris, France; <sup>57</sup>Service d'Hématologie, Hôpital Saint-Louis AP-HP, Paris, France; <sup>58</sup>Laboratoire d'Hématologie and <sup>59</sup>Service d'Hématologie Clinique et Thérapie Cellulaire, Hôpital Saint-Antoine AP-HP, Paris, France; <sup>60</sup>Service d'Hématologie Biologique, CHU de Poitiers, Poitiers, France; <sup>61</sup>Service d'Hématologie Clinique, CHU La Milétrie, Poitiers, France; <sup>62</sup>Laboratoire d'Hématologie, CHU R. Debré, Reims, France; <sup>63</sup>Pôle de Biologie, INSERM UMR U1236, CHU Rennes, Rennes, France; <sup>64</sup>Service d'Hématologie Clinique, Cesson-Sevigné, France; <sup>65</sup>Laboratoire d'Hématologie, Institut de Biologie Clinique, Rouen, France; <sup>66</sup>Service d'Hématologie Clinique, Centre Henri-Becquerel, Rouen, France; <sup>67</sup>Laboratoire d'Hématologie and <sup>68</sup>Service d'Hématologie, CHU de Saint-Etienne-Hôpital Nord, Saint-Priest-en-Jarez, France; <sup>69</sup>Laboratoire d'Hématologie, CHU de Strasbourg, Strasbourg, France; <sup>70</sup>Service d'Hématologie Clinique, Hôpital de Haute-pierre, Strasbourg, France; <sup>71</sup>Service d'Hématologie, Pôle Institut Universitaire du Cancer Oncopole CHU, Institut Universitaire du Cancer de Toulouse-Oncopole, Toulouse, France; <sup>72</sup>Assistance Publique des Hôpitaux de Marseille, Service d'Hématologie et d'Oncologie Pédiatrique, Hôpital La Timone, Marseille, France; <sup>73</sup>Service d'Hématologie, Hôpital Henri Mondor, Créteil, France; <sup>74</sup>Service d'Oncologie Génétique, Université Bourgogne-Franche Comté, INSERM 1231 and 1209, CHU Dijon Bourgogne, Dijon, France; and <sup>75</sup>Institut de Biologie et de Pathologie, Université Grenoble-Alpes, INSERM 1209 and CNRS UMR 5309, Laboratoire de Génétique Onco-hématologique, CHU de Grenoble, Grenoble, France

### Key Points

- Criteria for a cytological and phenotypical diagnosis of BPDCN are defined.
- First-line treatment with Aspa-MTX followed by allo-transplant is the best way to achieve prolonged survival even in elderly.

Blastic plasmacytoid dendritic cell neoplasm (BPDCN) is a rare and aggressive leukemia for which we developed a nationwide network to collect data from new cases diagnosed in France. In a retrospective, observational study of 86 patients (2000-2013), we described clinical and biological data focusing on morphologies and immunophenotype. We found expression of markers associated with plasmacytoid dendritic cell origin (HLA-DR<sup>high</sup>, CD303<sup>+</sup>, CD304<sup>+</sup>, and cTCL1<sup>+</sup>) plus CD4 and CD56 and frequent expression of isolated markers from the myeloid, B-, and T-lymphoid lineages, whereas specific markers (myeloperoxidase, CD14, cCD3, CD19, and cCD22) were not expressed. Fifty-one percent of cytogenetic abnormalities impact chromosomes 13, 12, 9, and 15. Myeloid leukemia was associated with an adverse prognosis. We categorized chemotherapeutic regimens into 5 groups: acute myeloid leukemia (AML)-like, acute lymphoid leukemia (ALL)-like, lymphoma (cyclophosphamide, doxorubicin, vincristine, and prednisone [CHOP])-like, high-dose methotrexate with asparaginase (Aspa-MTX) chemotherapies, and not otherwise specified (NOS) treatments. Thirty patients received allogeneic hematopoietic cell transplantation (allo-HCT), and 4 patients received autologous hematopoietic cell transplantation. There was no difference in survival between patients receiving AML-like, ALL-like, or Aspa-MTX regimens; survival was longer in patients who received AML-like, ALL-like, or Aspa-MTX regimens than in those who received CHOP-like regimens or NOS. Eleven patients are in persistent complete remission after allo-HCT with a median survival of 49 months vs 8 for other patients. Our series confirms a high response rate with a lower toxicity profile with the Aspa-MTX regimen, offering the best chance of access to hematopoietic cell transplantation and a possible cure.

## Introduction

Blastic plasmacytoid dendritic cell neoplasm (BPDCN) is a rare and aggressive neoplasm<sup>1</sup> for which there is currently no consensus regarding the best therapeutic approach. The disease is now clearly categorized in the new World Health Organization (WHO) classification of hematological malignancies and distinguished from acute myeloid leukemia (AML).<sup>2</sup> Most patients respond to various chemotherapy regimens, but relapses are almost inevitable, with a median overall survival (OS) of ~1 year. Better results are reported in the literature with leukemia-type regimens based on AML or acute lymphoblastic leukemia (ALL) chemotherapies.<sup>3</sup> Nevertheless, only patients who undergo hematopoietic stem cell transplantation (HCT) seem to have a prolonged survival, especially after allogeneic HCT.<sup>3-5</sup>

To identify the best treatments currently available, we conducted a retrospective study based on the recruitment to the French

BPDCN network between 2000 and 2013. We describe the clinical and biological characteristics of this rare entity using the data from our large series.

## Patients and methods

### Patients

Based on the French BPDCN network, we identified 109 patients (2000-2013) in 35 French centers. The diagnosis of BPDCN was defined according to WHO recommendations<sup>2,6</sup> in each participating center using a mandatory panel of lineage markers detected by flow cytometry or immunohistochemistry on infiltrated blood, bone marrow, or cutaneous lesions. In 52 cases, a larger immunophenotype was performed at the UMR 1098 including plasmacytoid dendritic cell (pDC)-specific markers.<sup>7,8</sup>

(supplemental Data 1). Data collection is described in supplemental Data 1.

## Treatment definitions

The initial chemotherapeutic regimens were categorized into 5 groups: AML-like (anthracyclines associated with cytarabine as in “5 + 7” AML treatments), ALL-like (multidrug associations as in ALL treatments), Aspa-MTX (high-dose methotrexate with asparaginase as in natural killer [NK]-T lymphoma treatments), CHOP-like (classical regimen used in the treatment of non-Hodgkin lymphomas and combining cyclophosphamide, doxorubicin, vincristine, and prednisone), and not otherwise specified (NOS) regimens (all other drugs alone or in combination). We also identified patients receiving autologous or allogeneic HCT (auto-HCT and allo-HCT, respectively).

## Statistical analyses

Quantitative variables are described as mean  $\pm$  standard deviation or median (range) and compared using the Student *t* or Mann-Whitney *U* test, as appropriate. Categorical variables are described as number (percentage). Overall response rates and relapse rates among responders are described using number and percentage with 95% confidence intervals. Categorical variables were compared using the  $\chi^2$  or Fisher's exact test, as appropriate. OS curves were constructed using the Kaplan-Meier method, and treatment groups were compared using the log-rank test. Censored patients are those alive or lost to follow-up at the date of last contact. Univariate and multivariate Cox regression analyses were performed. Variables with *P* < .2 on univariate analysis were entered into multivariate survival analysis. The data were considered significant only when *P* < .05. Analyses were performed using SAS version 9.4 (SAS Institute, Cary, NC).

The study was approved by our institutional review board (CPP Est II) and the Advisory Committee for Data Processing in Health Research (Comité Consultatif sur le Traitement de l'Information en Matière de Recherche dans le Domaine de la Santé).

## Results

### Patient characteristics

We identified 109 eligible patients, of whom 23 were excluded because of incomplete information. Clinical and biological characteristics were available for 86 patients (69 males and 17 females, sex ratio = 4) with a median age at diagnosis of 64 (11-89) years (Table 1). Cutaneous lesions were largely predominant and preceded hematological or visceral involvement in 41 patients (47.7%) by a mean time of 2.5 months. A single cutaneous lesion was present in 40 patients (46.5%), while disseminated skin involvement was visible in 33 patients (38%), and disease remained localized to the skin for only 2 patients. A neurological lesion was documented in 7 patients (8%). The performance status was slightly altered (grade 3-4) in 11 patients (12.8%).

### Complete blood cell count

The results of the complete blood cell count at diagnosis 2 revealed that 64% of patients had anemia at diagnosis, 75% had thrombopenia, and 38% had neutropenia (Table 1). Only 13% of cases had no cytopenia at diagnosis. Hyperleukocytosis was uncommon (31% of cases), and 3 cases had a white blood cell count  $>50 \times 10^9/L$  with elevated blast cell count. In 69% of cases,

**Table 1. Clinical and biological characteristics of the study population (N = 86)**

	n (%) or mean [range]
<b>Tumoral involvement (N = 86)</b>	
Skin	73* (84.9)
Lymph nodes	48 (55.8)
Spleen	19 (22)
Liver	15 (17.4)
Cerebrospinal fluid	4 (4.5)
Eye	3 (3.5)
<b>Complete blood count (n = 79)</b>	
White blood cells, $\times 10^9/L$	1 [0.8-53.8]
Neutrophils	2.7 [0.02-10]
Eosinophils	0.2 [0-4.1]
Basophils	0.02 [0-0.2]
Lymphocytes	2.1 [0.3-9.3]
Monocytes	0.5 [0-3]
Myelemia	0.1 [0-1.6]
Blasts	5.4 [0-45]
Hemoglobin, g/dL	11.2 [6.5-18.4]
Platelets, $\times 10^9/L$	106 [13-302]
<b>Bone marrow aspirates (n = 73), %</b>	
Blasts†	64.0 [0-100]
Neutrophil line	17.0 [0-66]
Eosinophil line	0.8 [0-21]
Basophil line	0.1 [0-3]
Erythroblasts	10.0 [0-50]
Lymphocytes and plasma cells	8.0 [0-48]
Monocytes	1.4 [0-9]
<b>Blast morphologies, %‡</b>	
Vacuoles only	26/21
Pseudopodia and vacuoles	68/17
Undifferentiated morphology	65/7
Lymphoid-like morphology	18/68
Monocytoid-like morphology	17/6
Blasts with granulations	17/3

\*Including 40 cases with a single cutaneous lesion.

†Percentage of total bone marrow cells.

‡Number of cases presenting these characteristics/mean proportion of blast cells presenting this morphology.

blast cells were found on blood smear, and 40% had myelemia ranging from 0.1 to  $1.6 \times 10^9/L$ . We observed monocytosis in 9 patients (from 1.1 g/L to  $3 \times 10^9/L$ ), of whom 1 patient had a history of polycythemia, 1 had a history of myelodysplasia (MDS-EB1), and 1 had chronic myelomonocytic leukemia (CMML). Three patients had hypereosinophilia ( $>0.7 \times 10^9/L$ ), and this was associated with monocytosis in 1 case (patient P1202). No hematological antecedent was reported for these cases, and no evaluation of genetic alterations of PDGFRA, PDGFRB, or FGR1A was performed. We observed hyperlymphocytosis in 7 cases (from 4.1 to  $9 \times 10^9/L$ ). All were adults, and none had known hematological malignancies.



## Bone marrow aspiration and morphology

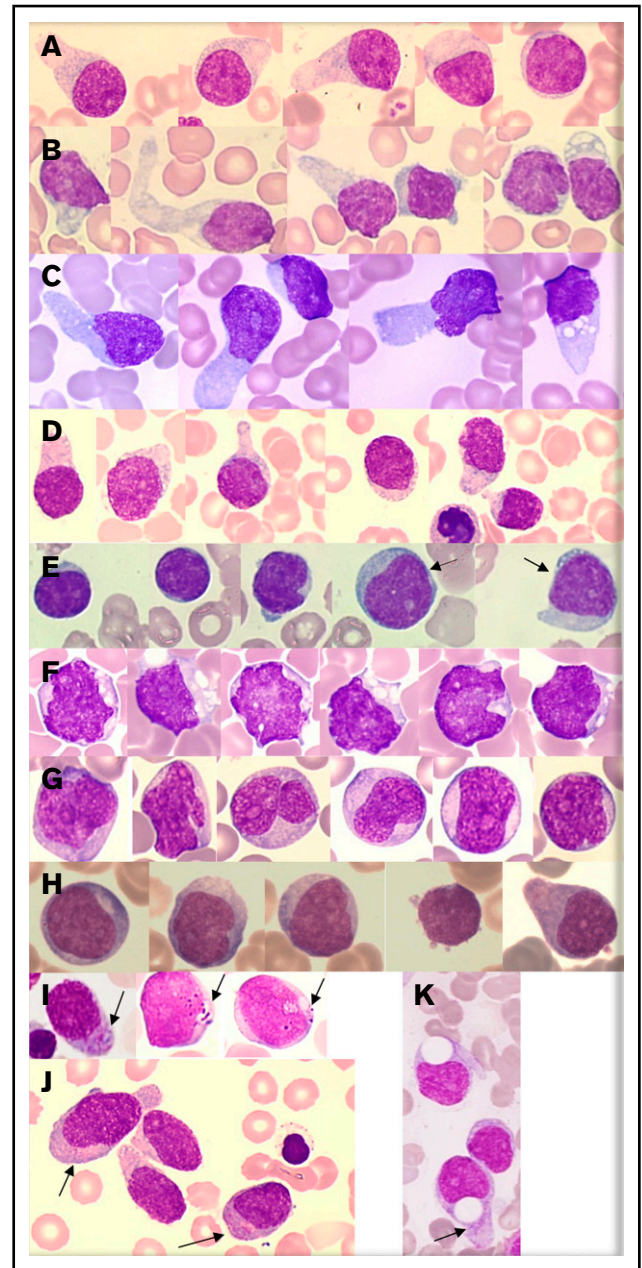
Blastic infiltration was observed in 70 out of 73 cases (96%), including 4% with <20% of blasts. Only 3 cases had cutaneous involvement only and no bone marrow infiltration. Dysplasia in  $\geq 1$  lineage was observed in 31% of cases, more frequently impacting the granular lineage (85%). The mean age of patients with dysplasia did not differ from that of nondysplasia patients (64.6 vs 63 years). Peroxidase and esterase results were negative in all cases in which they were tested ( $n = 34$  and  $n = 15$ , respectively).

Morphologic analysis of the blast population ( $n = 73$ ) showed that morphologies were heterogeneous. Typical morphology showed medium-sized cells with a blastic round or (less frequently) irregular nucleus that was frequently peripheral. Small nucleoli were frequent. Importantly, the cytoplasm displayed faint and heterogeneous basophilia with large or small gray areas inducing a “granite” or “cloudy sky” coloration and no granulation for the majority of cases. In a large number of cases, we observed small vacuoles (sometimes coalescent) in an unusual arrangement under the cytoplasmic membrane or like rosary beads (94% of cases) and frequently large (less or more) pseudopodia (68% of cases) in a fraction of the blastic population only (3% to 75% for vacuoles and 2% to 43% for pseudopodia) (Figure 1A-D). Of note, nearly 18% of cases presented blast cells with a dominant lymphoid-like morphology (nearly two-thirds of the blast population), which can lead to confusion for diagnosis (Figure 1E). A low proportion (7%) of blasts with immature morphologies (high nuclear-to-cytoplasmic ratio, fine chromatin, and large nucleolus) were present in 65% of cases (Figure 1H). Few cells with a monoblastic-like morphology (mean 6%) were found in 17% of cases, and it is noteworthy that rare cases presented a clear monoblastic-like morphology in almost the entire blast population, with very visible nucleoli and reinforced basophilia (Figure 1F-G). Importantly, azurophilic fine or large granulations could be observed (17% of cases) in a small fraction of blasts (3%) (Figure 1I-J).

## Immunophenotype

BPDCN cells always expressed CD4 and CD123 (interleukin-3 $\alpha$  receptor), HLA-DR, and cTCL1 at a high level and very frequently expressed CD56 (99.9%), CD304 (93.6%), CD303 (75%), CD36 (92.5%), CD38 (84%), and CD45RA (89%) (Table 2 and Figure 2). Of note, the level of CD4, CD56, and CD303 was frequently low in intensity (lower than the expression on normal T cells, NK cells, or pDCs). The BPDCN score<sup>7</sup> was 5/5 for 58% of cases, 4/5 for 13%, and 3/5 for 29% of cases.

BPDCN expressed at  $\geq 1$  myeloid marker in 47% of cases including 2 myeloid markers in 9% of cases. The most frequent was CD33 (43%), as previously described,<sup>7</sup> followed by CD117 (18%) and CD15 (6.4%). Others were rare (Table 2). One case expressed CD13, CD33, and CD117 (and CD123, CD303, and CD304). No case expressed MPO or CD14. At least 1 T-lymphoid marker was expressed in 71.8% of cases, including 19% that expressed 2 of these markers. The most frequent was CD7 (59%), followed by CD2 (40%). No cases expressed CD3 (intracytoplasmic or membrane), CD16, or CD57 (Table 2). One B-lymphoid marker was expressed in a smaller number of cases (15.7%), the most frequent being CD22 (20%); cCD79a was rare (7%), while CD19, CD20, intracytoplasmic heavy-chain  $\mu$ , and surface immunoglobulin were never detected. It is noteworthy that surface CD22–positive cases



**Figure 1. Representative morphologies of BPDCN in blood or bone marrow aspirates.** (A-D) Typical morphology with large pseudopodia, microvacuoles in some blasts, an eccentrically located nucleus, and heterogeneous coloration of the cytoplasm (lightly basophile with some gray areas). The nuclei are sometimes prominent (C). (E) Lymphoid-like morphology with small cells, very small cytoplasm, and mature chromatin of the nucleus. In this case, other cells (arrows) are bigger and present a more immature profile. (F-G) Monoblast-like blasts. Cells are bigger and more basophilic, with irregular nuclei and prominent nucleoli. Case G is BPDCN secondary to acute transformation of CMML. (H) A more immature morphology with a high nucleocytoplasmic ratio, diffuse chromatin, nucleoli, and basophilic cytoplasm. (I-J) Presence of granules in the cytoplasm (arrows). (K) Atypical big and round vacuoles in the cytoplasm. May-Grünwald-Giemsa, original magnification  $\times 1000$ .

were negative on intracytoplasmic testing, and all cases with intracytoplasmic CD22 testing ( $n = 28$ ) were negative. B marker expression was statistically associated with a higher level of

**Table 2. Expression of hematopoietic markers in the blastic population in BPDCN cases**

Immunophenotype	Positive result/tested (%)
<b>Myeloid markers</b>	
CD33	28/65 (43)
CD13	1/60 (1.6)
CD15	3/47 (6.4)
CD65	1/39 (2.5)
CD117	12/66 (18)
CD36	50/54 (92.5)
CD64	1/35 (2.8)
CD14	0/59 (0)
MPO	0/86 (0)
<b>B-lymphoid markers</b>	
CD19	0/62 (0)
CD22	8/40 (20)
cCD22	0/35 (0)
cCD79a	4/57 (7)
cMu	0/19 (0)
Sig	0/19 (0)
<b>T-lymphoid markers</b>	
CD3	0/86 (0)
cCD3	0/86 (0)
CD7	38/64 (59)
CD2	24/59 (40.6)
CD5	3/52 (5.7)
CD1	1/25 (4)
CD16	0/40 (0)
CD57	0/8 (0)
CD8	0/49 (0)
<b>cDC markers</b>	
CD11c	0/51 (0)
CD1c	5/23 (21.7)
CD141	0/23 (0)
<b>Immature and other markers</b>	
CD34	1/73 (1.3)
Tdt	4/27 (14.8)
CD133	0/7 (0)
CD10	9/53 (17)
CD38	37/44 (84)

c, intracytoplasmic expression; cDC, classical dendritic cell; cMu, intracytoplasmic heavy-chain  $\mu$ ; MPO, myeloperoxidase; Sig, surface immunoglobulin; Tdt, intranuclear terminal deoxynucleotidyl transferase.

blood blastosis (median  $6.5 \times 10^9/L$  vs  $0.38 \times 10^9/L$ ,  $P = .028$ ) and more frequent splenomegaly (56% vs 17%,  $P = .013$ ). Finally, we found that the simultaneous expression of isolated markers of myeloid or lymphoid lineages was not uncommon (Figure 3). The most frequent scenario was coexpression of myeloid and T-lymphoid antigens ( $n = 30$ ), but all combinations were possible (myeloid marker plus B [ $n = 4$ ]), lymphoid B + T [ $n = 5$ ]), even the association of B, T, and myeloid antigens ( $n = 4$ ) (Table 3). Three of

these cases also expressed a BPDCN profile with CD123<sup>high</sup>, HLA-DR<sup>high</sup>, CD4<sup>+</sup>, CD56<sup>+</sup> plus CD303<sup>+</sup>, and CD304<sup>+</sup> or cTCL1<sup>+</sup>.

Markers of conventional dendritic cells were rare: CD11c and CD141 were not detected, but CD1c was found in 21.7% of cases at a low level. No case expressed CD11c or CD1c. Immature markers were rare, as shown by only 1 case expressing CD34, 18% of cases expressing CD117, 14.8% expressing terminal deoxynucleotidyltransferase, and no expression of CD133 (0/7 tested). They were not related to other markers, except for CD117<sup>+</sup>, which was associated with less frequent CD303 expression (25% for cases expressing CD117 vs 78% for others;  $P = .01$ ). The CD34<sup>+</sup> patient (a 41-year-old woman) presented cutaneous lesions and bone marrow infiltrated by a blastic population that expressed CD4<sup>+</sup>, CD34<sup>+</sup> plus CD117<sup>+</sup> and Tdt<sup>+</sup>, CD7<sup>+</sup> (without other T markers), CD123<sup>+</sup>, CD303<sup>+</sup>, CD304<sup>+</sup>, CD68<sup>+</sup>, and CD43<sup>+</sup> but absence of CD56.

### Conventional cytogenetic analysis

Karyotypes were obtained for 72% of patients (62/86). A cytogenetic abnormality was found in 59.7% of cases (37/86), with 14.5% of cases presenting a single abnormality, 9.7% with 2 abnormalities, and 35.5% presenting  $\geq 3$  abnormalities. Neither the total number of abnormalities nor any particular abnormality impacted the prognosis or clinical presentation. Deletions were predominant, involving especially minimal deleted regions of chromosomes 13, 12, 7, 9, 15, 5, 6, and 17 (Figure 4). Chromosomal gains were less frequent than deletions; however, we observed 1q gains ( $n = 5$ ) and gains of chromosome 8 ( $n = 5$ ).

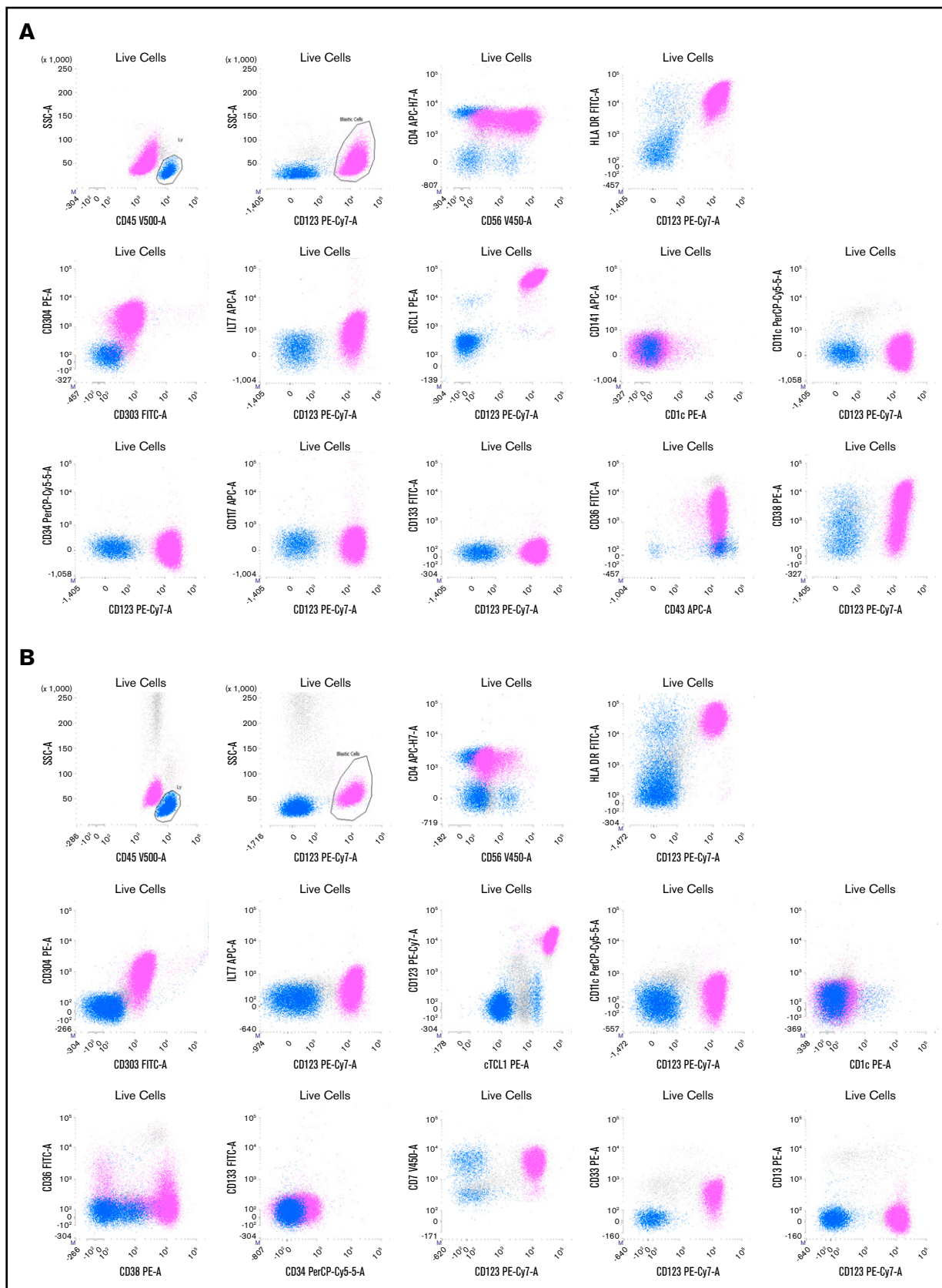
### Clonality

Immunoglobulin H clonality was tested in only 11 cases, and the result was negative in all cases. A T-cell receptor  $\gamma$  rearrangement was detected in 5 out of 19 cases analyzed and was statistically associated with more prevalent expression of 1 myeloid marker (100% of T-cell receptor  $\gamma$  rearrangement-positive cases vs 18% for others;  $P = .01$ ).

### Treatment response

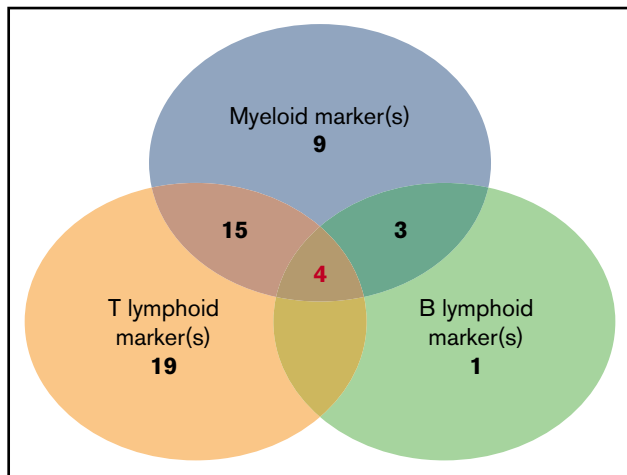
Complete data were evaluable in 78 patients (Table 4). A first complete remission (CR) was obtained in 47 patients (60.2%) with a median duration of 13 (1.5-15) months, and relapse occurred in 17 patients at a median of 19.2 (1.5-23.5) months (Table 2). The differences in relapse rates were not statistically significant between treatment groups. In CR patients, the remission duration ranged from 2 to 399 months with a median of 32 months. The CR rates and remission durations were not statistically different between the AML-like, ALL-like, and Aspa-MTX groups, but median duration of remission was longer in the AML-like/ALL-like/Aspa-MTX group than in the CHOP-like/NOS group (47 vs 7 months respectively;  $P = .038$ ). Nine patients received idarubicin as first-line therapy; 7 of them obtained CR, and only 1 relapsed after 10 months. The other 6 patients remain in CR and received HCT (allo-HCT,  $n = 5$ ; auto-HCT,  $n = 1$ ), and only 1 relapsed after transplantation. Thirty patients with no documented neurological involvement received prophylactic intrathecal chemotherapy as a part of their first-line treatment.

A second line of treatment was administered in 34 of primary refractory ( $n = 28$ ) or relapsing ( $n = 6$ ) patients. Only 6 patients exhibited a subsequent response, and 3 received allo-HCT. None of



**Figure 2. Two representative examples of BPCDN patients.** Live cells are gated on a first forward scatter (FCS)/side scatter (SSC) to exclude debris and a FCS area (A)/FSC height (H) gate to select singlets (not shown). The CD45<sup>bright</sup>/SSC<sup>low</sup> cells are lymphocytes (blue), and CD45<sup>dim</sup>/CD123<sup>bright</sup> cells are a BPCDN blastic population





**Figure 3. Number of BPDCN cases that express nonspecific lineage markers and association of different expression combinations.** The analysis presents 61 patients in whom a large myeloid and B-/T-lymphoid panel were analyzed (CD19, CD20, CD22, cCD22, and cCD79a; T: cCD3, CD3, CD2, CD5, and CD7; myeloid: CD13, CD33, CD15, CD65, CD117, MPO, CD11c, CD14, and CD64). Numbers indicate the number of cases in each group of associated markers. Of note, 4 cases simultaneously expressed B, T, and myeloid markers.

the patients treated with an AML-like regimen as first-line therapy experienced a further response; 2 patients in the ALL-like group, 1 patient in the Aspa-MTX group, 2 patients in the CHOP-like group, and 1 patient in the NOS group obtained CR after salvage chemotherapy; all but 1 patient ultimately died of progressive BPDCN. We identified 3 patients who received bortezomib and 2 azacitidine as salvage therapy; a short and transient partial response was observed for these 5 patients with a rapid and fatal progression in all cases.

### Transplantation

Thirty-four patients received HCT (30 allo-HCT and 4 auto-HCT). Twenty-six of them were transplanted while in initial remission (23 allo-HCT and 3 auto-HCT), and 8 patients received allo-HCT in subsequent response (complete and partial remission,  $n = 5$ ) after a rescue chemotherapy or in progressive disease ( $n = 3$ ).

A myeloablative conditioning regimen was used in 24 allo-HCT patients, 120-cGy total body irradiation with cyclophosphamide in 17 patients, and 12.8 mg/kg busulfan and fludarabine in 7 patients. A reduced-intensity regimen was used in the remaining 6 patients, including single-dose total body irradiation (200 cGy) in 5 cases. The donor was an identical sibling in 15 cases, an unrelated matched donor in 11 cases, and an unrelated mismatched donor in the 4 last cases.

A protocol comprising carmustine, cytarabine, etoposide, and melphalan was used for the conditioning regimen of the 4 auto-HCT

patients; 3 were transplanted in first CR, and 1 received a subsequent allo-HCT after a relapse after auto-HCT.

Fourteen patients relapsed after HCT: 4 auto-HCT patients (100%) after 2, 4, 7, and 17 months, respectively, and 10 allo-HCT patients (33%) with a median time of 12 (3–15) months after HCT. One patient received a second allo-HCT. All patients who relapsed after HCT ultimately died of BPDCN progression.

### Survival

Patients who responded to the first line of treatment ( $n = 47$ , 54.6%) showed longer median OS than refractory patients (8 vs 20 months) (Figure 4;  $P < .0001$ ). Median OS was longer in patients who received AML-like, ALL-like, or Aspa-MTX regimens (18, 15, or 15 months, respectively) than in those who received CHOP-like or NOS regimens as first-line treatment (11 or 4 months, respectively) ( $P < .0001$ ; Figure 5). There was no significant difference in survival of patients receiving AML-like and ALL-like regimens or Aspa-MTX regimens.

Eleven patients (42.3%) are alive in persistent CR after allo-HCT at the time of analysis. The median OS for patients who received HCT (autologous [ $n = 3$ ] or allogeneic [ $n = 31$ ]) and other patients ( $n = 52$ ) was respectively 49 and 8 months ( $P < .0001$ ; Figure 6).

### Prognostic factors

In univariate analyses, 7 factors were found to have a significant impact on OS (Table 5). Multivariate analysis confirmed the significant impact of treatment group (AML-like, ALL-like, and Aspa-MTX vs CHOP-like and NOS), Eastern Cooperative Oncology Group status, and myeloma (Table 5). Age had a significant impact only when considered as a continuous variable. The beneficial effect of HCT persisted independently of age in multivariate analysis. The role of the conditioning regimen and type of donor for allo-HCT could not be analyzed due to the small sample size.

### Discussion

Currently, the treatment of BPDCN remains challenging for physicians. According to the literature, the best OS is observed in BPDCN patients who receive allo-HCT in first CR.<sup>4,9</sup> We conducted this retrospective study in an attempt to identify the best first-line treatment to obtain the maximum of patients in first CR who might then be eligible for allo-HCT. Our data also explore the clinical and biological presentation of this rare disease based on the French BPDCN network data collection, which achieved almost exhaustive analysis of French cases over a 10-year period. Cases are now more easily diagnosed, taking into account the recent diagnostic criteria, including new pDC markers.<sup>2,8</sup> In our series, most diagnoses were centrally reviewed (cytology and immunophenotyping), and we confirm the rarity of the disease, with 10 to 15 new cases identified per year in France. The clinical presentation is in accordance with the classical, well-known features, namely older men with cutaneous lesions, good performance status, and pancytopenia, frequently with leukemic cells in the blood. We do not identify

**Figure 2. (continued)** (pink). (A) Patient P165. Blasts are CD4<sup>+</sup> (lower than T lymphocytes in blue) and CD56<sup>+</sup> with a bimodal expression, CD303<sup>+</sup>, CD304<sup>+</sup> HLA-DR<sup>+</sup>, cTCL1<sup>+</sup>, ILT7<sup>low</sup>, CD36<sup>+</sup>, CD38<sup>+</sup>, and CD43<sup>+</sup>. There is no expression of classical dendritic cell markers (CD1c, CD141, and CD11c) or immature markers (CD34, CD133, and Tdt). (B) Patient P149. Blasts are CD4<sup>+</sup> and CD56<sup>partial and low</sup>, CD303<sup>+</sup>, CD304<sup>+</sup> HLA-DR<sup>+</sup>, cTCL1<sup>+</sup>, ILT7<sup>-</sup>, CD36<sup>-/partial</sup>, and CD38<sup>+</sup>. The blasts also expressed CD7 and CD33 without CD13. Classical dendritic cell markers (CD1c, CD141, and CD11c) and immature markers (CD34 and CD133) are negative. APC, allophycocyanin; FITC, fluorescein isothiocyanate; PE, phycoerythrin.



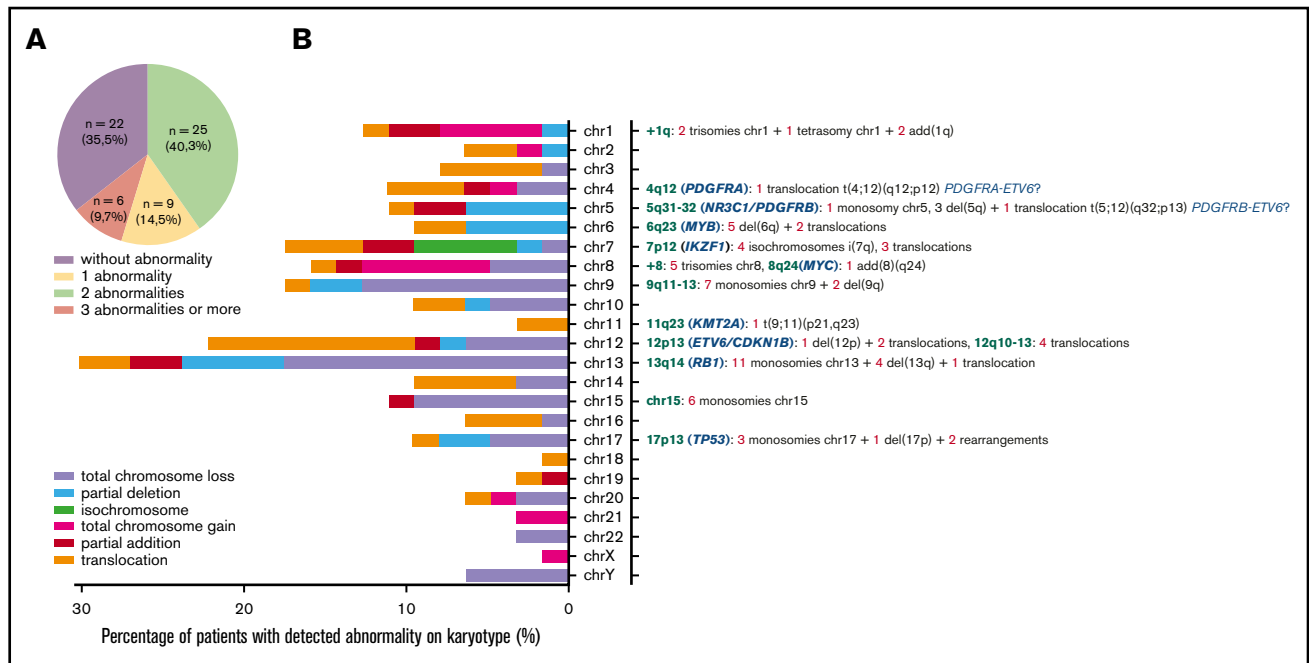
**Table 3. Clinical and biological presentation of the 4 BPDCN cases expressing a combination of lymphoid markers (B and T) plus myeloid markers**

Patients	P101	P1506	P1603	P201
Age, y	76	66	69	81
<b>T-cell markers</b>				
CD2	–	–	–	+
CD5	–	–	–	–
CD7	+	+	+	–
CD3	–	–	–	–
cCD3	–	–	–	–
<b>B-cell markers</b>				
CD22	–	+	+	+
CD79a	+	–	–	–
cCD22	–	ND	ND	ND
CD19	–	–	–	–
<b>Myeloid markers</b>				
CD13	–	–	–	–
CD117	+	–	–	–
CD15	–	–	–	–
CD65	–	–	–	–
CD33	+	+	+	+
CD38	+	+	ND	ND
CD36	+	+	+	+
MPO	–	–	–	–
<b>pDC markers</b>				
HLA-DR	+	+	+	+
CD4	+	+	+	+
CD56	+	+	+	+
CD123	+	+	+	+
CD303	ND	+	ND	+
CD304	ND	+	ND	+
cTCL1	ND	+	+	ND
Karyotype	Failure	Normal	Normal	Normal
<b>Bone marrow aspirate</b>				
Dysplasia	No	Dysgranulopoiesis	Dysgranulopoiesis	Trilineage dysplasia
Blast morphology	Large pseudopodia, rare vacuoles, undifferentiated cells	Medium size, some vacuoles, immature	Typical with vacuoles and pseudopodia	Typical with vacuoles and pseudopodia
Cutaneous lesions	Extensive petechiae skin purpura, from thighs to neck	Multiple brown lesions on the back and trunk	Purplish nodular lesions on the forehead and scalp	Diffuse ecchymotic lesions on the trunk, face, upper and lower limbs
Immunohistochemistry	CD4 <sup>+</sup> CD56 <sup>+</sup> MPO <sup>–</sup> CD3 <sup>–</sup> CD20 <sup>–</sup> CD138 <sup>–</sup> immunoglobulin <sup>–</sup>	CD4 <sup>+</sup> CD56 <sup>+</sup> CD3 <sup>–</sup> CD20 <sup>–</sup> MPO <sup>–</sup>	CD123 <sup>+</sup> CD4 <sup>+</sup> CD56 <sup>+</sup> CD45RA <sup>+</sup> CD34 <sup>–</sup> MPO <sup>–</sup> TDT <sup>–</sup> CD15 <sup>–</sup> CD3 <sup>–</sup> CD2 <sup>–</sup> CD8 <sup>–</sup> CD20 <sup>–</sup>	CD4 <sup>+</sup> CD56 <sup>+</sup> CD68 <sup>+</sup> CD123 <sup>+</sup> CD303 <sup>+</sup> TCL1 <sup>+</sup> CD2AP <sup>+</sup>

c, intracytoplasmic detection; ND, not done.

specific clinical features other than cutaneous involvement in 85% of patients and lymph node involvement in half of the patients. Isolated cutaneous or visceral lesions were rare in our series, and we did not observe frequent neurological involvement at diagnosis. We identified older age and altered general state as adverse clinical prognostic features with a significant impact on OS. This probably hampers the possibility of those patients receiving intensive treatment followed by HCT.

Diagnosing BPDCN in hematology laboratories requires in-depth knowledge of the biological characteristic of this rare form of leukemia, since BPDCN blasts can harbor heterogeneous morphologies, as well as an immunophenotype that is sometimes close to non-pDC leukemia (particularly AML or immature ALL). We highlight frequently observed cytological characteristics that might alert cytologists, including a typically light-blue/gray cytoplasm with some clearer areas (“cloudy sky”) and very frequent



**Figure 4. Chromosomal abnormalities evidenced by conventional cytogenetic analysis in 62 cases.** (A) Distribution of karyotype results. (B) Percentage and type of abnormality for each chromosome depicted on the left. Chromosomal abnormalities of particular interest are listed on the right, with loci concerned (green), candidate genes already described (blue), and number of patients (red) for each type of abnormality (gray) (ie, monosomies, trisomies, deletions, isochromosome, addition, and translocations). add, addition; chr, chromosome; del, deletion.

microvacuoles, thin or large pseudopods only in a fraction of the blastic population, and frequent eccentric nucleus. Importantly, this characteristic population is frequently associated with some blasts with undifferentiated pseudomonoblastic or pseudolymphoid morphology. It is noteworthy that the pseudolymphoid morphology could be preponderant, hampering the diagnosis with a false suspicion of lymphoma.<sup>10</sup> More surprisingly, we observed a small number of the blastic population that presents peroxidase negative granulations, a finding that has not been described before. Myeloma is the sole biological adverse prognostic feature affecting OS. Myeloma was present in 40% of cases, including 11 cases with myeloma  $>0.3 \times 10^9/L$  associated with monocytosis in 6 cases, probably indicating a proliferative component in these patients. Indeed, 2 of them had a known history of polycythemia vera or CMML.

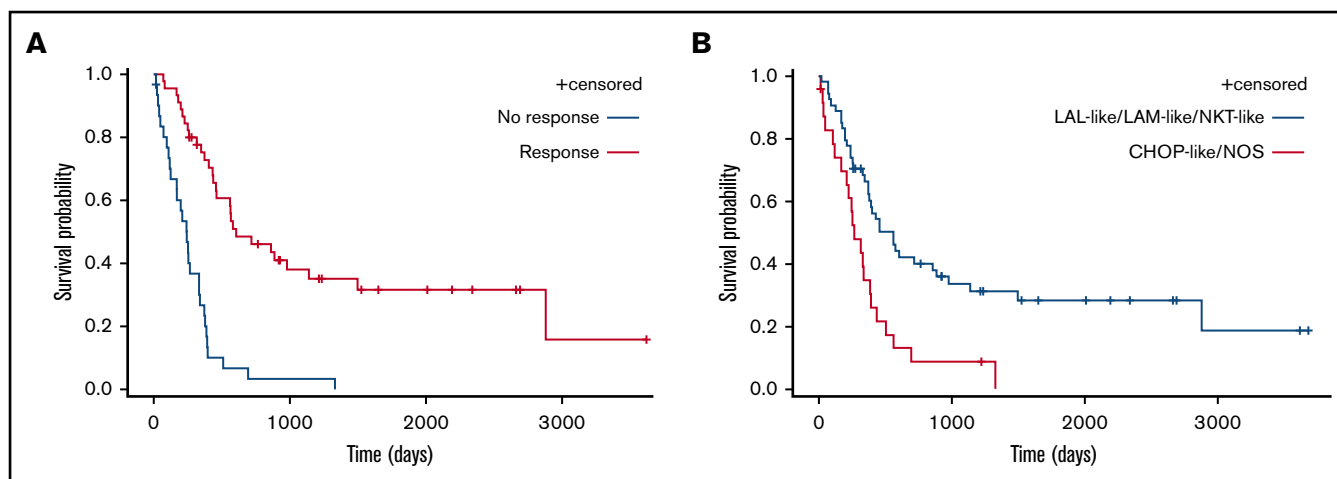
Immunophenotyping is mandatory to confirm the diagnosis of BPDCN. The most specific lineage markers never expressed in BPDCN are MPO, CD14, and CD64 (only found at low level in 1 case) for myeloid lineage, cCD3 and CD3 for T lineage, and CD19 and cCD22 for B lineage (whereas cCD79a is found in 7%

of cases). Other less specific markers are frequently expressed, most frequently isolated, but sometimes associated and even for myeloid plus B- and T-lymphoid markers, leading to difficulty affirming the BPDCN diagnosis. Overall, these data highlight that immunophenotyping of BPDCN must include an investigation of pDC markers, including CD123, CD303, CD304, and cTCL1. Moreover, expression of myeloid and/or B-/T-lymphoid markers must not exclude this diagnosis. Practically, isolated expression of lineage markers (such as CD33, CD7, and CD22) without specific markers (such as CD19, cCD3, MPO, CD14, and CD64) with HLA-DR<sup>high</sup>, CD4, and CD56 must raise a hypothesis of BPDCN, which must then be confirmed using pDC marker expression (Figure 7). Histopathological analysis of cutaneous lesions is complementary and is especially required for patients with skin lesions only using validated pDC-associated markers such as TCL1, CD2AP, SPIB, TCF4, and MX1.<sup>11-16</sup> Moreover, overexpression of BCL2 represents a hallmark of tumoral pDCs vs normal pDCs,<sup>16,17</sup> indicating a potential therapeutic role of anti-BCL2 treatment. It is noteworthy that only 1 case expressed immature markers (CD34<sup>+</sup> CD117<sup>+</sup>)

**Table 4. Response to first-line treatment**

Treatment group	Complete remission, n (%)	Remission duration, median (range), mo	Relapse rate, n (%) of CR patients	HCT, n (%) of CR patients
AML-like (n = 19)	13 (68.4)	68 (4-399)*	4 (28.5)	7 (2 auto) (36.8-53.8)
ALL-like (n = 19)	15 (78.9)	47 (6-224)	5 (33.3)	7 (46.7)
Aspa-MTX (n = 16)	12 (75)	26 (5-166)	4 (33.3)	6 (37.5-50)
CHOP-like (n = 16)	6 (37.5)	17 (4-22)*	4 (66.7)	2 (12.5-33.3)
NOS (n = 10)	1	35	0	0

\*Data are missing for 1 patient.



**Figure 5. Comparison of survival according to treatment type and response.** OS according to response to first-line treatment (A) and initial treatment groups (AML-like, ALL-like, and Aspa-MTX vs CHOP-like and NOS) (B).

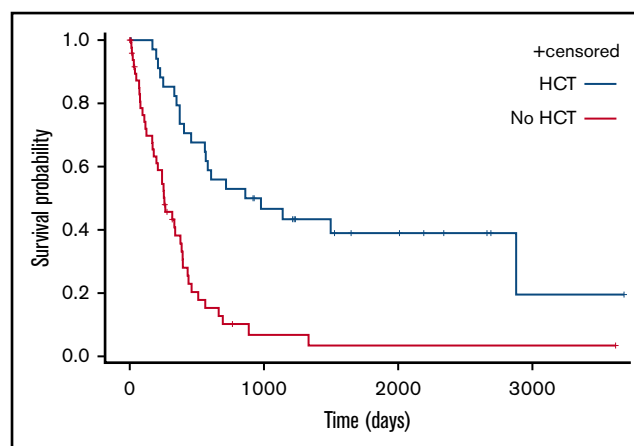
and absence of CD56: it could be related to the immature BPDCN profile described by Martín-Martín et al.<sup>18</sup>

Cytogenetics revealed abnormalities classically described in BPDCN.<sup>19,20</sup> These abnormalities are potentially related to the deletion of genes implicated in cancer development, such as *RB1* (13q14), involved in cell-cycle control and tumor removal<sup>21</sup>; *ETV6* and *CDKN1B* (12p11-13)<sup>21,22</sup>; and *IKZF1* (7p12), *TP53* (17p13), *NR3C1* (5q31),<sup>23</sup> and rearrangements of *MYB* (6q23)<sup>24</sup> and *KMT2A*,<sup>25</sup> as previously described in BPDCN. 8q24 aberration, suggestive of *MYC* rearrangement, was only detected in 1 patient. *MYC* rearrangements appear particularly recurrent in Japanese populations,<sup>26-31</sup> with a prevalence estimated at 38% in the largest cohort,<sup>32</sup> frequently associated with immunoblastoid morphology. In contrast, prevalence seems to be lower in white patients, based on karyotype studies (4% to 8%),<sup>19,33-35</sup> and although cryptic cases are possible, prevalence remains lower in studies based on immunohistochemistry and fluorescence in situ hybridization assays (15%),<sup>36</sup> raising the hypothesis of a lower frequency of *MYC* rearrangement/immunoblastoid morphologies in white populations. Cytogenetic abnormalities did not impact survival, although numbers of cases with informative karyotypes and lesions of interest (5q for example) were limited in our series. Of note, 2 of the cases with 12p11-13 rearrangements exhibited hypereosinophilia and balanced translocation potentially involving *PDGFRA/PDGFRB*, consistent with the 2 aspects of the neoplasm: a hypereosinophilic contingent with *PDGFRA/PDGFRB* deregulation and a pDC contingent with *ETV6* inactivation reported as an early clonal event in BPDCN.<sup>22</sup>

Our data confirm that achievement of CR after first-line treatment is required to obtain long survival and that prolonged survival is observed only in patients receiving allo-HCT during first CR.<sup>3-5,37</sup> Very few patients received auto-HCT as consolidation of CR, and all of them relapsed in our cohort. However, the small number of patients involved precludes any conclusion.<sup>38,39</sup> When we analyzed pretransplant treatment, the highest CR rates were observed after leukemia-like regimens, with no difference observed between AML-like or ALL-like regimens. We confirm that the use of a less intense regimen based on MTX and asparaginase<sup>40</sup> offers similar CR rates, which then translate into prolonged survival if the patient receives allo-HCT. We have demonstrated in preclinical models that

idarubicin is one of the most efficient drugs against BPDCN,<sup>41</sup> and patients in our cohort showed a good response to idarubicin. Based on these results, we are now conducting a prospective phase 2 trial in France to test a MTX-asparaginase-based regimen associated with a single dose of idarubicin. All responding and eligible patients will be offered HCT (allogeneic or autologous). The use of CHOP-like regimens gives lower CR rates, thereby preventing access to HCT in good conditions and survival of <1 year for the majority of patients. Patients refractory to or relapsing after the first treatment do not respond easily to further treatments, and the success of second-line therapy is very low, even when an allo-HCT is performed in subsequent response.

Recent biological data offer some avenues for alternative treatments such as bortezomib,<sup>42</sup> venetoclax,<sup>43-46</sup> IDH2 inhibitor,<sup>47</sup> pralatrexate,<sup>47-49</sup> and azacytidine.<sup>50-52</sup> We identified 2 patients receiving bortezomib and 2 patients receiving azacytidine, with a 50% response rate but a response duration of <6 months. Most interesting data were obtained with immunotherapy,<sup>53</sup> especially with a CD123-directed conjugated immunotoxin (Tagraxofusp). Frankel et al first reported high CR rates (>80%) with acceptable toxicity,



**Figure 6. OS according to performance of HCT as part of treatment.**

**Table 5. Univariate and multivariate analysis of prognostic factors for OS**

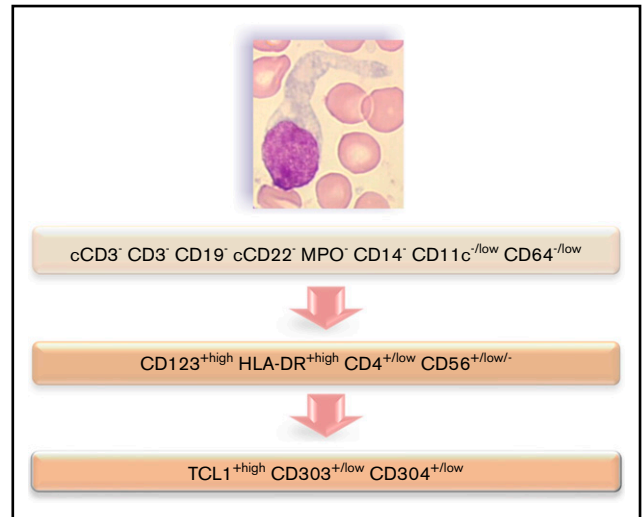
	Univariate analysis			Multivariate analysis		
	HR	95% CI	P	HR	95% CI	P
Treatment (lymph-like/ other vs ALL-like/ AML-like/NK-T-like)	2.396	1.391-4.125	.002	2.461	1.361-4.449	.003
Age (continuous variable)	1.026	1.011-1.041	.0007			
ECOG status 0-2 vs 3-4	0.278	0.137-0.565	.001	0.268	0.124-0.576	.001
Myeloma, × 10 <sup>9</sup> /L	4.245	1.467-12.289	.008	4.696	1.365-16.153	.001
Monocytes, × 10 <sup>9</sup> /L	1.423	0.912-2.221	.1200			
White blood cells, × 10 <sup>9</sup> /L	0.881	0.736-1.0555	.168			
Platelets, × 10 <sup>9</sup> /L	0.996	0.992-1.000	.079			

The estimates of the parameters are given with their 95% confidence intervals. A *P* value < .05 is considered statistically significant. CI, confidence interval; ECOG, Eastern Cooperative Oncology Group; HR, hazard ratio.

but remission duration remained short (6 months),<sup>54</sup> especially in children.<sup>55</sup>

Subsequently, Pemmeraju et al<sup>56</sup> reported 32 untreated patients with an overall response rate of 90% and clinical CR in 72% of patients, enabling a successful bridge to transplant in 13 patients (45%) (ie, 10 allo-HCT and 3 auto-HCT). With a follow-up of 25 months, disease-free survival in these untreated patients, grafted in first CR, reached 52% at 24 months. The authors mentioned grade 3 to 5 adverse events with 3 deaths observed during exposure to tagraxofusp after a severe capillary leak syndrome observed during the first cycles of treatment in 8 patients. They conclude that “with vigilant monitoring and early interventions, capillary leak syndrome was manageable and did not preclude restarting tagraxofusp after resolution.” It seems that this treatment should also be considered as a useful bridge to transplant in naive BPDCN patients. Some encouraging but preliminary results are also described with an anti-CD123–conjugated monoclonal antibody.<sup>57</sup>

In conclusion, diagnosis of BPDCN remains challenging for biologists, since most will only encounter it once or twice a year or less. Although the criteria are well defined by the WHO classification, its presentation in the hematology laboratory (cytology, immunophenotype) is quite heterogeneous, and cytogenetics and mutation profiles are not specific. We present one of the largest series of BPDCN patients to date, highlighting criteria that should alert the biologist to the possibility of BPDCN and prompt investigation of pDC marker expression to confirm diagnosis. After diagnosis, the question of the best treatment of these patients is a major issue for physicians, and our results shed some light on this point. The attainment of high CR rates after first-line treatment is the best way to achieve prolonged survival in BPDCN patients if the results can be consolidated with allo-HCT. Leukemia-like regimens have shown their efficacy in our data and in the literature, although toxicity in the population of elderly BPDCN patients remains a challenge. Our series confirms the potential for a high response rate, similar to leukemia-like regimens, with the association of MTX and asparaginase, with a low toxicity profile, even in elderly patients. We believe that this approach offers the vast majority of BPDCN patients their best chance at gaining access to HCT as a consolidation



**Figure 7. Flowchart illustrating the phenotypic diagnosis of BPDCN.** In the absence of expression of specific lineage markers, high expression of CD123 and HLA-DR plus CD4 (which can be low) and CD56 (which can be low or negative) raises the possibility of BPDCN, even if isolated or associated less-specific lineage markers are expressed (such as CD7, C2, CD33, CD13, CD117, CD22, and cCD79a). Diagnosis should be confirmed using cTCL1, CD303, and CD304. c, intracytoplasmic; –, negative (expressed in <20% of the blastic population); +, positive (>20%); low, intensity of expression less than normal cells expressing this marker (eg, NK cells for CD56, normal pDCs for CD303 and CD304, T cells for CD4, and monocytes for CD11c and CD64).

treatment, which remains the best way to ensure prolonged response.

## Acknowledgments

The authors thank Fiona Ecartot for her help preparing the manuscript, Louis Benazet for collecting data, Aurore Pugin for statistical analysis, and Franck Leroux for data management, as well as the Groupe Français d’Hématologie Cellulaire, the Groupe d’Etude Immunologique des Leucémies, the Groupe Français de Cytogénétique Hématologique, and the Société Française d’Hématologie.

This study was supported by the Institut National du Cancer (PRT-K-15-175), the Ligue Contre le Cancer Conférence de Coordination Interrégionale du Grand est Bourgogne Franche-Comté, and the association Cent pour Sang la Vie.

## Authorship

Contribution: C.V. performed statistical analysis; E.P., Y.D., T. Petrella, A.R., F.R., C.F., and S.B. acquired and analyzed data; biologists and physicians from institutions 5-73 provided patient samples, clinical data, and expertise; F.R., D. Binda, S.P., F.S., E.S., M.P., L.S., and T. Petrella provided guidance and expertise in their respective areas of study; F.G.-O., C.V., F.R., and E.D. wrote the manuscript; M.D., O.A., and P.S. commented on the manuscript; F.G.-O., F.A.-D., D. Binda, and E.D. supervised research; and all authors provided input and edited and approved the final version of the manuscript.

Conflict-of-interest disclosure: The authors declare no competing financial interests.



ORCID profiles: F.G.-O., 0000-0002-6930-9554; M.D., 0000-0002-3801-5297; A.R., 0000-0001-5544-7270; T. Petrella, 0000-0002-7099-8107; C.P., 0000-0002-1267-9546; T.L., 0000-0002-3123-4948; F.-X.G., 0000-0001-8998-3039; E.C., 0000-0003-1667-3421; J.-Y.C., 0000-0002-2356-7101; A.P., 0000-0003-2751-985X; L.B., 0000-0001-7543-6480; D. Blaise, 0000-0002-5684-9447; M.-C.B., 0000-0002-6569-7414; P.-S.R., 0000-0001-8801-4164; V.F., 0000-0002-8415-460X; J.T., 0000-0002-0167-5996; M.L.G.-T., 0000-0002-3131-3240; K.M., 0000-0001-8864-

4801; D.R.-W., 0000-0002-7767-755X; G.B., 0000-0002-5201-1786; T.F., 0000-0002-6437-4189; L.C., 0000-0001-7971-4476; M.L., 0000-0002-8372-4148; V. Barlogis, 0000-0001-9645-3968; O.A., 0000-0002-7742-136X; P. Saas, 0000-0002-8857-9939; E. Deconinck, 0000-0002-6006-8088.

Correspondence: Eric Deconinck, Service Hématologie, CHU Besançon, 25000 Besançon, France; e-mail: edeconinck@chu-besancon.fr.

## References

1. Guru Murthy GS, Pemmaraju N, Atallah E. Epidemiology and survival of blastic plasmacytoid dendritic cell neoplasm. *Leuk Res*. 2018;73:21-23.
2. Swerdlow SH, Campo E, Harris NL, et al. WHO Classification of Tumours of Haematopoietic and Lymphoid Tissues. Lyon, France: International Agency for Research on Cancer; 2017.
3. Pagano L, Valentini CG, Grammatico S, Pulsoni A. Blastic plasmacytoid dendritic cell neoplasm: diagnostic criteria and therapeutical approaches. *Br J Haematol*. 2016;174(2):188-202.
4. Roos-Weil D, Dietrich S, Boumendil A, et al; European Group for Blood and Marrow Transplantation Lymphoma, Pediatric Diseases, and Acute Leukemia Working Parties. Stem cell transplantation can provide durable disease control in blastic plasmacytoid dendritic cell neoplasm: a retrospective study from the European Group for Blood and Marrow Transplantation. *Blood*. 2013;121(3):440-446.
5. Kharfan-Dabaja MA, Reljic T, Murthy HS, Ayala E, Kumar A. Allogeneic hematopoietic cell transplantation is an effective treatment for blastic plasmacytoid dendritic cell neoplasm in first complete remission: systematic review and meta-analysis. *Clin Lymphoma Myeloma Leuk*. 2018;18(11):703-709.e1.
6. Swerdlow SH, Campo E, Harris NL, et al. WHO Classification of Tumours of Haematopoietic and Lymphoid Tissues. Lyon, France: International Agency for Research on Cancer; 2008.
7. Garnache-Ottou F, Feuillard J, Ferrand C, et al; GOELAMS and GEIL study. Extended diagnostic criteria for plasmacytoid dendritic cell leukaemia. *Br J Haematol*. 2009;145(5):624-636.
8. Angelot-Delettre F, Büchle S, Ferrand C, et al. Intracytoplasmic detection of TCL1--but not ILT7-by flow cytometry is useful for blastic plasmacytoid dendritic cell leukemia diagnosis. *Cytometry A*. 2012;81(8):718-724.
9. Pagano L, Valentini CG, Pulsoni A, et al; GIMEMA-ALWP (Gruppo Italiano Malattie EMatologiche dell'Adulto, Acute Leukemia Working Party). Blastic plasmacytoid dendritic cell neoplasm with leukemic presentation: an Italian multicenter study. *Haematologica*. 2013;98(2):239-246.
10. Lyapichev KA, Sukswai N, Konoplev S, Khoury JD. Blastic plasmacytoid dendritic cell neoplasm with unusual lymphoid features and macrovacuoles. *Ann Hematol*. 2019;98(9):2221-2222.
11. Sukswai N, Aung PP, Yin CC, et al. Dual expression of TCF4 and CD123 is highly sensitive and specific for blastic plasmacytoid dendritic cell neoplasm. *Am J Surg Pathol*. 2019;43(10):1429-1437.
12. Petrella T, Meijer CJ, Dalac S, et al. TCL1 and CLA expression in agranular CD4/CD56 hematodermic neoplasms (blastic NK-cell lymphomas) and leukemia cutis. *Am J Clin Pathol*. 2004;122(2):307-313.
13. Julia F, Dalle S, Duru G, et al. Blastic plasmacytoid dendritic cell neoplasms: clinico-immunohistochemical correlations in a series of 91 patients. *Am J Surg Pathol*. 2014;38(5):673-680.
14. Ceribelli M, Hou ZE, Kelly PN, et al. A druggable TCF4- and BRD4-dependent transcriptional network sustains malignancy in blastic plasmacytoid dendritic cell neoplasm. *Cancer Cell*. 2016;30(5):764-778.
15. Pulford K, Banham AH, Lyne L, et al. The BCL11AXL transcription factor: its distribution in normal and malignant tissues and use as a marker for plasmacytoid dendritic cells. *Leukemia*. 2006;20(8):1439-1441.
16. Cota C, Vale E, Viana I, et al. Cutaneous manifestations of blastic plasmacytoid dendritic cell neoplasm-morphologic and phenotypic variability in a series of 33 patients. *Am J Surg Pathol*. 2010;34(1):75-87.
17. Sapienza MR, Fuligni F, Agostinelli C, et al; AIRC 5xMille consortium 'Genetics-driven targeted management of lymphoid malignancies' and the Italian Registry on Blastic Plasmacytoid Dendritic Cell Neoplasm. Molecular profiling of blastic plasmacytoid dendritic cell neoplasm reveals a unique pattern and suggests selective sensitivity to NF- $\kappa$ B pathway inhibition. *Leukemia*. 2014;28(8):1606-1616.
18. Martin-Martin L, López A, Vidrales B, et al. Classification and clinical behavior of blastic plasmacytoid dendritic cell neoplasms according to their maturation-associated immunophenotypic profile. *Oncotarget*. 2015;6(22):19204-19216.
19. Leroux D, Mugneret F, Callanan M, et al. CD4(+), CD56(+) DC2 acute leukemia is characterized by recurrent clonal chromosomal changes affecting 6 major targets: a study of 21 cases by the Groupe Français de Cytogénétique Hématologique. *Blood*. 2002;99(11):4154-4159.
20. Tang Z, Tang G, Wang SA, et al. Simultaneous deletion of 3"ETV6 and 5"EWSR1 genes in blastic plasmacytoid dendritic cell neoplasm: case report and literature review. *Mol Cytogenet*. 2016;9(1):23.
21. Lucioni M, Novara F, Fiandrino G, et al. Twenty-one cases of blastic plasmacytoid dendritic cell neoplasm: focus on biallelic locus 9p21.3 deletion. *Blood*. 2011;118(17):4591-4594.

22. Tang Z, Li Y, Wang W, et al. Genomic aberrations involving 12p/ETV6 are highly prevalent in blastic plasmacytoid dendritic cell neoplasms and might represent early clonal events. *Leuk Res*. 2018;73:86-94.
23. Emadali A, Houghoughi N, Duley S, et al. Haploinsufficiency for NR3C1, the gene encoding the glucocorticoid receptor, in blastic plasmacytoid dendritic cell neoplasms. *Blood*. 2016;127(24):3040-3053.
24. Suzuki K, Suzuki Y, Hama A, et al. Recurrent MYB rearrangement in blastic plasmacytoid dendritic cell neoplasm. *Leukemia*. 2017;31(7):1629-1633.
25. Yang N, Huh J, Chung WS, Cho MS, Ryu KH, Chung HS. KMT2A (MLL)-MLL1 rearrangement in blastic plasmacytoid dendritic cell neoplasm. *Cancer Genet*. 2015;208(9):464-467.
26. Takiuchi Y, Maruoka H, Aoki K, et al. Leukemic manifestation of blastic plasmacytoid dendritic cell neoplasm lacking skin lesion: a borderline case between acute monocytic leukemia. *J Clin Exp Hematop*. 2012;52(2):107-111.
27. Fu Y, Fesler M, Mahmud G, Bernreuter K, Jia D, Batanian JR. Narrowing down the common deleted region of 5q to 6.0 Mb in blastic plasmacytoid dendritic cell neoplasms. *Cancer Genet*. 2013;206(7-8):293-298.
28. Nakamura Y, Kayano H, Kakegawa E, et al. Identification of SUPT3H as a novel 8q24/MYC partner in blastic plasmacytoid dendritic cell neoplasm with t(6;8)(p21;q24) translocation. *Blood Cancer J*. 2015;5(4):e301.
29. Kubota S, Tokunaga K, Umezumi T, et al. Lineage-specific RUNX2 super-enhancer activates MYC and promotes the development of blastic plasmacytoid dendritic cell neoplasm [published correction appears in *Nat Commun*. 2019;10(1):3943]. *Nat Commun*. 2019;10(1):1653.
30. Kodaira H, Kobayashi S, Shimura H. t(6;8)(p21;q24) in blastic plasmacytoid dendritic cell neoplasms. 2013.
31. Momoi A, Toba K, Kawai K, et al. Cutaneous lymphoblastic lymphoma of putative plasmacytoid dendritic cell-precursor origin: two cases. *Leuk Res*. 2002;26(7):693-698.
32. Sakamoto K, Katayama R, Asaka R, et al. Recurrent 8q24 rearrangement in blastic plasmacytoid dendritic cell neoplasm: association with immunoblastoid cytology, MYC expression, and drug response. *Leukemia*. 2018;32(12):2590-2603.
33. Sumarriva Lezama L, Chisholm KM, Carneal E, et al. An analysis of blastic plasmacytoid dendritic cell neoplasm with translocations involving the MYC locus identifies t(6;8)(p21;q24) as a recurrent cytogenetic abnormality. *Histopathology*. 2018;73(5):767-776.
34. Harley S, Kampagianni O, Lee A, Polski J. A rare case of blastic plasmacytoid dendritic cell neoplasm with aberrant immunophenotypic profile and unusual cytogenetics. *Am J Clin Pathol*. 2016;146:
35. Kurt H, Khoury JD, Medeiros LJ, Huh YO. Blastic plasmacytoid dendritic cell neoplasm with unusual morphology, MYC rearrangement and TET2 and DNMT3A mutations. *Br J Haematol*. 2018;181(3):305.
36. Boddu PC, Wang SA, Pemmaraju N, et al. 8q24/MYC rearrangement is a recurrent cytogenetic abnormality in blastic plasmacytoid dendritic cell neoplasms. *Leuk Res*. 2018;66:73-78.
37. Kharfan-Dabaja MA, Al Malki MM, Deotare U, et al. Haematopoietic cell transplantation for blastic plasmacytoid dendritic cell neoplasm: a North American multicentre collaborative study. *Br J Haematol*. 2017;179(5):781-789.
38. Aoki T, Suzuki R, Kuwatsuka Y, et al. Long-term survival following autologous and allogeneic stem cell transplantation for blastic plasmacytoid dendritic cell neoplasm. *Blood*. 2015;125(23):3559-3562.
39. Goren Sahin D, Akay OM, Uskudar Teke H, Andic N, Gunduz E, Gulbas Z. Blastic plasmacytoid dendritic cell leukemia successfully treated by autologous hematopoietic stem cell transplantation to a remission of 48-month duration. *Case Rep Hematol*. 2013;2013:471628.
40. Gillis L, Lebras L, Bouafia-Sauvy F, et al. Sequential combination of high dose methotrexate and L-asparaginase followed by allogeneic transplant: a first-line strategy for CD4+/CD56+ hematodermic neoplasm. *Leuk Lymphoma*. 2012;53(8):1633-1637.
41. Philippe L, Cerioli A, Bôle-Richard E, et al. Bortezomib as a new therapeutic approach for blastic plasmacytoid dendritic cell neoplasm. *Haematologica*. 2017;102(11):1861-1868.
42. Yang C, Fu C, Feng Y, et al. Clinical efficacy of bortezomib and lenalidomide in blastic plasmacytoid dendritic cell neoplasm. *Ann Hematol*. 2019;98(6):1525-1527.
43. Agha ME, Monaghan SA, Swerdlow SH. Venetoclax in a patient with a blastic plasmacytoid dendritic-cell neoplasm. *N Engl J Med*. 2018;379(15):1479-1481.
44. Grushchak S, Joy C, Gray A, et al. Novel treatment of blastic plasmacytoid dendritic cell neoplasm: A case report. *Medicine (Baltimore)*. 2017;96(51):e9452.
45. DiNardo CD, Rausch CR, Benton C, et al. Clinical experience with the BCL2-inhibitor venetoclax in combination therapy for relapsed and refractory acute myeloid leukemia and related myeloid malignancies. *Am J Hematol*. 2018;93(3):401-407.
46. Montero J, Stephansky J, Cai T, et al. Blastic plasmacytoid dendritic cell neoplasm is dependent on BCL2 and sensitive to venetoclax. *Cancer Discov*. 2017;7(2):156-164.
47. Taylor J, Haddadin M, Upadhyay VA, et al. Multicenter analysis of outcomes in blastic plasmacytoid dendritic cell neoplasm offers a pretargeted therapy benchmark. *Blood*. 2019;134(8):678-687.
48. Arranto C, Tzankov A, Halter J. Blastic plasmacytoid dendritic cell neoplasm with transient response to pralatrexate. *Ann Hematol*. 2017;96(4):681-682.
49. Sato S, Tanaka E, Tamai Y. Blastic plasmacytoid dendritic cell neoplasm with response to pralatrexate. *Ann Hematol*. 2019;98(3):801-803.
50. Sukegawa S, Sakata-Yanagimoto M, Matsuoka R, et al. Blastic plasmacytoid dendritic cell neoplasm accompanied by chronic myelomonocytic leukemia successfully treated with azacitidine [in Japanese]. *Rinsho Ketsueki*. 2018;59(12):2567-2573.

51. Khwaja R, Daly A, Wong M, Mahé E, Cerquozzi S, Owen C. Azacitidine in the treatment of blastic plasmacytoid dendritic cell neoplasm: a report of 3 cases. *Leuk Lymphoma*. 2016;57(11):2720-2722.
52. Laribi K, Denizon N, Ghnaya H, et al. Blastic plasmacytoid dendritic cell neoplasm: the first report of two cases treated by 5-azacytidine. *Eur J Haematol*. 2014;93(1):81-85.
53. Pemmaraju N. Novel pathways and potential therapeutic strategies for blastic plasmacytoid dendritic cell neoplasm (BPDCN): CD123 and beyond. *Curr Hematol Malig Rep*. 2017;12(6):510-512.
54. Frankel AE, Woo JH, Ahn C, et al. Activity of SL-401, a targeted therapy directed to interleukin-3 receptor, in blastic plasmacytoid dendritic cell neoplasm patients. *Blood*. 2014;124(3):385-392.
55. Sun W, Liu H, Kim Y, et al. First pediatric experience of SL-401, a CD123-targeted therapy, in patients with blastic plasmacytoid dendritic cell neoplasm: report of three cases. *J Hematol Oncol*. 2018;11(1):61.
56. Pemmaraju N, Lane AA, Sweet KL, et al. Tagraxofusp in blastic plasmacytoid dendritic-cell neoplasm. *N Engl J Med*. 2019;380(17):1628-1637.
57. Kovtun Y, Jones GE, Adams S, et al. A CD123-targeting antibody-drug conjugate, IMG632, designed to eradicate AML while sparing normal bone marrow cells. *Blood Adv*. 2018;2(8):848-858.