



HAL
open science

Stratigraphic singularity: An earthquake located off Jersey triggered the mudflow preserving the only loess outcrop actually known under the seas

Jean-Pierre Lefort, Paul Chambers, Guzel Danukalova, Jean-Laurent Monnier, John Renouf, Evgenia Osipova, David Aoustin, François Pustoc'h

► To cite this version:

Jean-Pierre Lefort, Paul Chambers, Guzel Danukalova, Jean-Laurent Monnier, John Renouf, et al.. Stratigraphic singularity: An earthquake located off Jersey triggered the mudflow preserving the only loess outcrop actually known under the seas. 20th Congress of the International Union for Quaternary Research (INQUA), Jul 2019, Dublin, Ireland. hal-02304184

HAL Id: hal-02304184

<https://univ-rennes.hal.science/hal-02304184>

Submitted on 3 Oct 2019

HAL is a multi-disciplinary open access archive for the deposit and dissemination of scientific research documents, whether they are published or not. The documents may come from teaching and research institutions in France or abroad, or from public or private research centers.

L'archive ouverte pluridisciplinaire **HAL**, est destinée au dépôt et à la diffusion de documents scientifiques de niveau recherche, publiés ou non, émanant des établissements d'enseignement et de recherche français ou étrangers, des laboratoires publics ou privés.

Stratigraphic singularity: An earthquake located off Jersey triggered the mudflow preserving the only loess outcrop actually known under the seas

J.-P. Lefort^a, P. Chambers^b, G. Danukalova^c, J.-L. Monnier^a, J. Renouf^d, E. Osipova^c, D. Aoustin^a and F. Pustoc'h^a

^a Université de Rennes 1, CNRS, UMR 6566 CREA AH, Laboratoire Archéosciences, Campus de Beaulieu (bat. 24-25), 74205 CS, 35042 Rennes cedex, France
^b Government of Jersey, Department of environment, Howard Davis Farm, La Route de la Trinité, Trinity, Jersey, JE3 5JP, United Kingdom
^c Institute of Geology Ufimian Federal Research Centre, Russian Academy of Sciences, 450077, Ufa, K. Marx, Str. 16/2 and Kazan Federal University, Kazan, Russian Federation
^d Le Côté des Pelles, La Route du Petit Port, St Brelade, Jersey JE38 HH, United Kingdom

Abstract

A five meters long core sample, retrieved in 2007 from the Havre de Lessay (France) (Latitude: 49°20993, Longitude: -1°788815) and located between Jersey and the Cotentin Peninsula (France) has been studied using different techniques (image processing, granulometry, petrography, malacology, palynology and tentative dating).
 Between the lower part and the top, the core is a yellowish loess, a black mud and a grey shelly formation. The basal formation, which displays a typical loess granulometry, is the only loess found anywhere in situ on the seabed worldwide. Elsewhere, this fragile sediment has been always washed out by the successive Quaternary transgressions.
 The overlying mud formation, which displays all the characteristics of a mudflow, sealed up the loess deposit. Because this core has been sampled on the rim of a submarine valley located in front of a major onshore geological disruption (the Saint-Germain-sur-Ay transcurent shearing), clearly associated with an active seismic zone, it is likely that the protection of the loess deposit from erosion was initiated by an earthquake that triggered the overlying submarine mudflow.



Fig. 1. Distribution of the different core samples collected between Jersey and the Cotentin (after Chambers and Nichols, 2014).

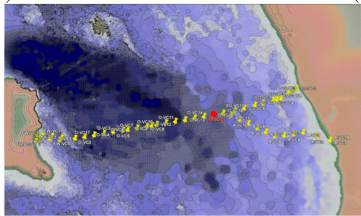


Fig. 1. Distribution of the different core samples collected between Jersey and the Cotentin (after Chambers and Nichols, 2014).

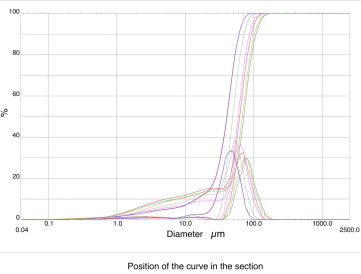


Fig. 4. Superimposition of the different granulometric curves measured in the loess section of core O-VC15.

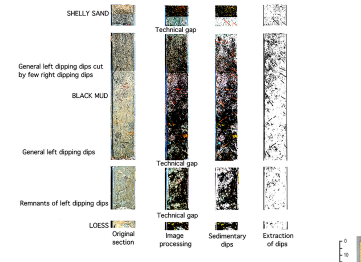


Fig. 5. Successive stages of the image processing evidencing the different dips characterising core O-VC15.

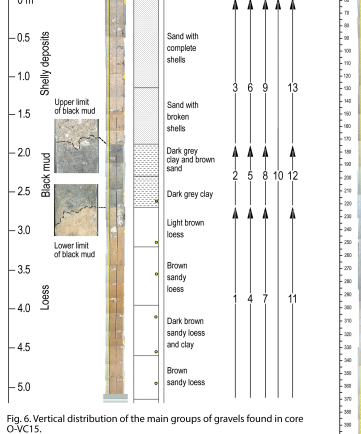


Fig. 5. Vertical distribution of the main groups of gravels found in core O-VC15.
 Yellow circles: sampling for granulometry.
 1: decreasing number of fragments of Eocene shelly sandstone in loess towards the top;
 2: no fragments of Eocene shelly sandstone in the black mud save in the lowermost part;
 3: absence of these fragments in the Quaternary shelly sand;
 4: very rare metamorphic (greenschist facies) rocks and no granitic fragments;
 5: many Palaeozoic sandstones and green slates with rare fragments of rocks of the greenschist facies; 6: only basement rocks, mainly slates;
 7: 'no taluses'; 8: very rare pieces of 'taluses';
 9: few pieces of 'taluses';
 10: presence of well-rounded quartz mainly in the black mud;
 11: no remnants of cement on gravels;
 12: remnants of cement of Pleistocene conglomerate;
 13: light grey fragments of beach-rocks.

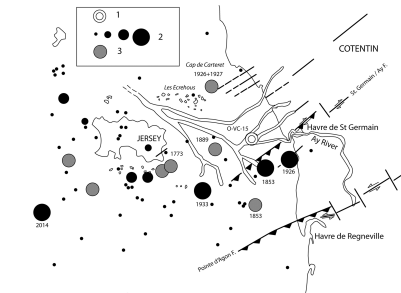


Fig. 7. Distribution of the earthquake epicenters between Jersey and the Cotentin.
 1: Core O-VC15;
 2: Epicentres after the British Geological Survey database, the diameters of the black dots are proportional to the intensity of the earthquakes; the largest diameters correspond with magnitudes 5.1 or 5.2;
 3: Location of the Historical Epicentres after Graindor 1973 (the true intensities are often unknown or doubtful).
 The St Germain S/Ay and Pointe d'Agon thrusts are shown.

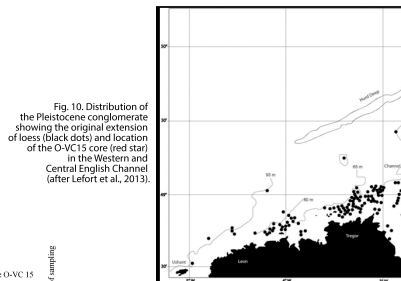


Fig. 10. Distribution of the Pleistocene conglomerate showing the original extension of loess (black dots) and location of the O-VC15 core (red star) in the Western and Central English Channel (after Lefort et al., 2013).

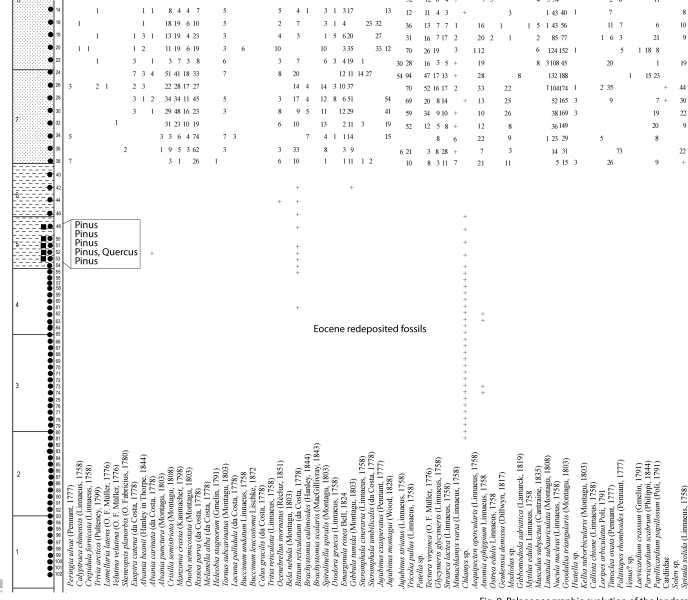


Fig. 8. Distribution of the mollusc species in core O-VC15 and possible reconstruction of the palaeoenvironment during sediment deposition.

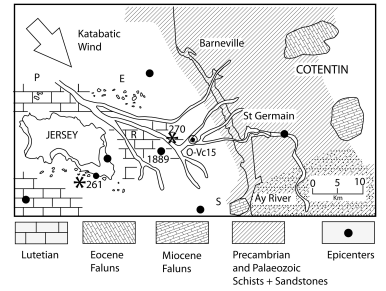


Fig. 2. Simplified map of the main types of rocks at the origin of the gravels found in core O-VC15. Stars: Pleistocene conglomerate; the epicentres corresponding to historical seismicity are taken from the Cossmann database (Graindor, 1973). The direction of the katabatic winds blowing during the Upper Pleistocene is taken from Lefort et al. (submitted). S: Sénéquet shoal. Dotted areas: metamorphic zone.

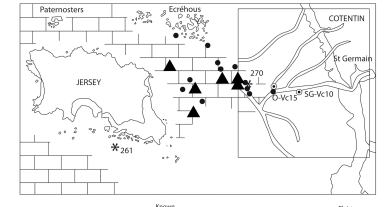


Fig. 3. Location of the samples of Eocene 'in place' dredged by Dangear (1923) and of the localities very rich in Eocene fragments (Hommerlé, 1967). The outcrops of Pleistocene conglomerate and the submerged rivers are also shown.

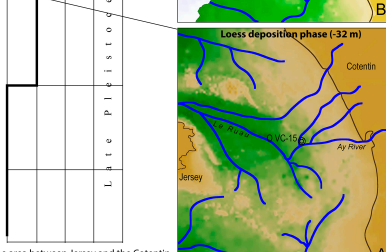
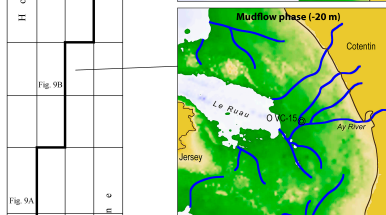
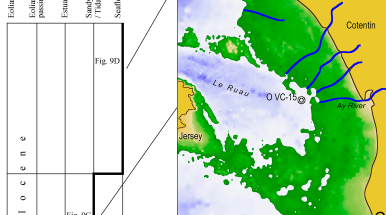
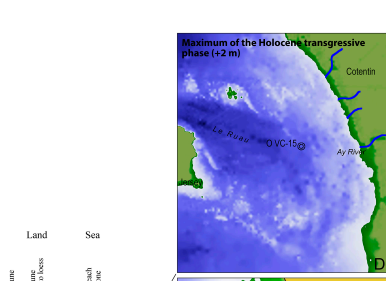


Fig. 9. Palaeogeographic evolution of the landscapes over the area between Jersey and the Cotentin from the last Glacial Maximum to the Present. The approximate sea-level is given.
 A: Loess deposition phase (-32 m); B: Mudflow phase (-20 m); C: Holocene transgressive phase (-12 m); D: Maximum of the Holocene transgressive phase (+2 m).