



HAL
open science

Ab Initio Study of Circular Dichroism and Circularly Polarized Luminescence of Spin-Allowed and Spin-Forbidden Transitions: From Organic Ketones to Lanthanide Complexes

Frédéric Gendron, Barry Moore II, Olivier Cador, Fabrice Pointillart, Jochen Autschbach, Boris Le Guennic

► To cite this version:

Frédéric Gendron, Barry Moore II, Olivier Cador, Fabrice Pointillart, Jochen Autschbach, et al.. Ab Initio Study of Circular Dichroism and Circularly Polarized Luminescence of Spin-Allowed and Spin-Forbidden Transitions: From Organic Ketones to Lanthanide Complexes. *Journal of Chemical Theory and Computation*, 2019, 15 (7), pp.4140-4155. 10.1021/acs.jctc.9b00286 . hal-02179645

HAL Id: hal-02179645

<https://univ-rennes.hal.science/hal-02179645>

Submitted on 19 Sep 2019

HAL is a multi-disciplinary open access archive for the deposit and dissemination of scientific research documents, whether they are published or not. The documents may come from teaching and research institutions in France or abroad, or from public or private research centers.

L'archive ouverte pluridisciplinaire **HAL**, est destinée au dépôt et à la diffusion de documents scientifiques de niveau recherche, publiés ou non, émanant des établissements d'enseignement et de recherche français ou étrangers, des laboratoires publics ou privés.

Ab-initio Study of Circular Dichroism and Circularly Polarized Luminescence of Spin-allowed and Spin-forbidden Transitions: From Organic Ketones to Lanthanide Complexes

Frédéric Gendron,^{* a} Barry Moore II,^b Olivier Cador,^a
Fabrice Pointillart,^a Jochen Autschbach^{* b} and Boris Le Guennic^{* a}

^a Univ Rennes, CNRS, ISCR (Institut des Sciences Chimiques de Rennes)
UMR 6226, F-35000 Rennes, France

^b Department of Chemistry, University at Buffalo
State University of New York, Buffalo, New York 14260-3000, U.S.A.

email: frederic.gendron@univ-rennes1.fr, jochena@buffalo.edu,
boris.leguennic@univ-rennes1.fr

May 23, 2019

Abstract

Complete and restricted active space self-consistent field (CAS- / RAS-SCF) wavefunction methods are applied for the calculation of circular dichroism (CD) and circularly polarized luminescence (CPL) of a series of molecules comprising four organic ketones, the chiral Cobalt(III) complex Λ -[Co(en)₃]³⁺ and the Europium(III) complex [Eu(DPA)₃]³⁻. The ab-initio results are in good agreement with the experimental data and previous results obtained with Kohn-Sham density functional theory in the case of the spin-allowed transitions. CD and CPL properties are calculated ab-initio for the first time for the spin-forbidden transitions of both a transition metal and a lanthanide complex.

1 Introduction

The interest in chiral systems is tremendous because of their potential applications in a wide range of domains such as biochemistry,¹ catalysis,² pharmacology,³ nanotechnology^{4,5} or in the development of new photonic materials.^{6,7} The two enantiomers of a chiral molecule have many identical properties, but they also differ crucially in some aspects. For instance, the enantiomers interact

differently with linearly and circularly polarized light, and they may absorb or emit photons preferentially with one sense of circular polarization. These are manifestations of the natural optical activity, i.e. the chiroptical properties exhibited by chiral compounds.

The enantiomers of a chiral molecule also interact differently with other chiral molecules and environments. The latter aspect is extremely important for drug design. For example, one enantiomer may exhibit the desired therapeutic behavior, while the other one may be inactive or even toxic.^{8,9} Therefore, it is important to have access to methods that are able to provide reliable structural information and to characterize the absolute configuration of enantiomers. Here, chiroptical spectroscopic methods are the prime tools.¹⁰⁻¹³ For instance, the circular dichroism (CD) and circularly polarized luminescence (CPL) of electronic transitions can be used to obtain stereochemical information. CD is the difference in absorption between left- and right-circularly polarized light. CPL is the analog of CD in emission. Therefore, CD spectroscopy is well designed to provide structural information on the stereochemistry of the ground state, whereas CPL is better suited for the characterization of the excited states.

CD and CPL properties are often characterized experimentally by the dimensionless absorption and luminescence dissymmetry factors g_{abs} and g_{lum} , respectively, which are defined as follows:

$$g_{\text{abs}} = \frac{\Delta\epsilon}{\epsilon} = \frac{\epsilon_L - \epsilon_R}{\frac{1}{2}(\epsilon_L + \epsilon_R)} \quad \text{and} \quad g_{\text{lum}} = \frac{\Delta I}{I} = \frac{I_L - I_R}{\frac{1}{2}(I_L + I_R)} \quad (1)$$

Here, ϵ_L and ϵ_R are the molar absorption coefficients for left- and right-circularly polarized light, respectively, and I_L and I_R are the corresponding luminescence intensities. From these definitions, it follows that the dissymmetry factors are within the range +2 and -2, with the limits corresponding to an absolute preference of one circular polarization over the other. Typically, however, the CD and CPL of a transition is only a small fraction of the total absorption and emission intensity, respectively. Accordingly, solutions of organic molecules usually exhibit $|g|$ values on the order of $10^{-2} - 10^{-5}$.^{14,15} Values of one order of magnitude larger are typical for transition metal complexes.¹⁶⁻²¹ The largest dissymmetry factors, within the range 0.1 - 1, have been observed for transitions within the 4f manifold of lanthanide (Ln) complexes.²²⁻²⁷ Due to the weak crystal-field (CF), these transitions are nearly electric-dipole (*ED*) forbidden, but comparatively strongly magnetic-dipole (*MD*) allowed, reinforcing the magnitude of the g values. For instance, a g_{lum} value of +1.38 was reported for the ${}^7F_1 \leftarrow {}^5D_0$ transition of the Europium(III) complex $\text{CsEu}[(+)\text{-hfbc}]_4$.^{28,29} It corresponds to the largest $|g|$ value measured to date for non-interacting molecules. Despite the widespread experimental use of these chiroptical spectroscopic techniques, the assignment and the interpretation of CD and CPL spectra in terms of individual transitions is rarely easy. Moreover, the magnitude and the sign of the g values can be sensitive to the presence of a solvent and to conformational changes. Theoretical support is therefore highly needed in order to ascertain the mechanisms responsible for the optical activity of the studied systems.

From an *ab-initio* point of view, the calculation of the chiroptical parameters g_{abs} and g_{lum} requires the determination of the electronic spectrum and the *ED* and *MD* transition moments in the ground and excited state geometries, respectively. Kohn-Sham time-dependent density functional theory (TDDFT, usually with hybrid functionals), coupled-cluster theory (CC) with singles and doubles (CCSD), and other coupled-cluster variants, have so far been the methods of choice for this type of calculations.³⁰⁻³⁵ These methods have been thoroughly tested over the last two decades

1
2
3
4 on a large set of organic compounds and on the spin-allowed transitions of some transition metal
5 complexes. For instance, the experimental CD and CPL spectra of *d*-camphorquinone and (*S,S*)-
6 *trans*- β -hydrindanone were nicely reproduced when using TDDFT calculations with inclusion of
7 the vibronic effects.³⁶ The results revealed that in both cases, the chiroptical properties arise from
8 transitions between the *n* and π^* orbitals of the carbonyl groups. Subsequently, Pecul and Ruud³⁷
9 applied TDDFT to a set of bicyclic ketones³⁸ and showed that the differences in sign and magni-
10 tude between g_{abs} and g_{lum} are essentially related to the structural differences between the ground
11 and excited states. Based on a similar set of compounds, it was shown that equation-of-motion
12 CCSD (EOM-CCSD) and TDDFT with the CAM-B3LYP functional provided similar accuracy
13 for g_{abs} and g_{lum} ,³⁹ while the popular B3LYP functional led to incorrect results in some of the
14 emission properties.
15

16
17 There is also a substantial body of research on the calculation of spin-allowed electronic CD
18 spectra of transition metal complexes, where TDDFT remains the main computational tool. See,
19 e.g., References 33, 40 and 41 for reviews and References 19, 42–50 for selected original studies.
20 CPL calculations for transition metal complexes are scarce in comparison. A first attempt was
21 made in 2008 by Coughlin *et al.*²¹ with the use of TDDFT in combination with an approximate
22 formulation of g_{lum} , in order to determine the chiroptical properties associated to the $S_0 \leftarrow T_1$
23 emission in a series of Iridium(III) complexes. Another attempt was made in 2013 with the use of
24 multi-reference perturbative methods (CASSCF and CASPT2) on a cycloplatinated-[6]helicene
25 compound.¹⁹ Despite the ability of lanthanide complexes to exhibit the largest dissymmetry fac-
26 tors, no *ab-initio* calculations of CD or CPL properties have been performed yet. Theoretical
27 work on lanthanide complexes has so far relied on CF models^{51,52} in combination with the semi-
28 empirical Judd-Ofelt theory.^{53,54} Recently, such CF based models were used to simulate the CD
29 spectrum⁵⁵ and the Raman optical activity⁵⁶ of Ln-based compounds. TDDFT has been also used
30 to calculate the CD spectrum of some Eu(III) and Yb(III) complexes,^{57–59} but these studies focused
31 on the UV-Vis part of the energy spectrum which corresponds mostly to intra-ligand excitations.
32 The lack of *ab-initio* data for the optical activity of metal-centered transitions arises from the added
33 difficulty to take into account the effects from the spin-orbit coupling (SOC). For spin-forbidden
34 transitions, the SOC is essential in bringing about the intensities, and for lanthanides, the SOC in
35 the 4f and 5d shells is sufficiently strong to alter the character of the transitions qualitatively.
36

37
38 Additionally, transition metal complexes with high symmetry, as well as most lanthanide
39 complexes, afford degenerate electronic states that pose significant challenges for the aforemen-
40 tioned single-reference based methods that are mainly used for theoretical chiroptical studies.
41 For instance, it is well known that the partially filled 4f shells in the Ln(III) complexes leads to
42 large static and dynamic electronic correlation effects that only multi-configurational approaches
43 can tackle.⁶⁰ Therefore, as an alternative to TDDFT and CC methods, we decided to perform
44 CD and CPL calculations within the complete and restricted active space (CAS / RAS)⁶¹ self-
45 consistent field (SCF) multi-reference wavefunction framework, with SOC treated via state inter-
46 action (RASSI).⁶² In order to demonstrate that the approach is able to treat closed-shell organic
47 molecules, transition metal complexes, and open-shell Ln-based systems with comparable accu-
48 racy, we performed calculations for representatives from each group, namely, four bicyclic ke-
49 tones, the Cobalt(III) complex Λ -[Co(en)₃]³⁺ (en = ethylenediamine), and the Eu(III) compounds
50 Δ -, Λ -[Eu(DPA)₃]³⁻ (DPA = (2,6)-pyridine-dicarboxylate).
51
52
53
54
55
56
57
58
59
60

2 Theoretical and Computational Details

2.1 Kohn-Sham Density Functional Theory Calculations

The Gaussian 09⁶³ software package was used to perform structural optimizations of the investigated complexes. The ground state (GS) geometries were obtained using Kohn-Sham Density Functional Theory (DFT), whereas the structures of the corresponding excited states (ES) were optimized using the time-dependent DFT (TDDFT) response calculations. The GEDIIS/GDIIS algorithms were used for the geometry optimizations.⁶⁴ The optimizations of the organic ketones employed either the Becke three-parameters exchange function in combination with the Lee-Yang-Parr correlation functional (B3LYP^{65,66}) with 20 % of exact exchange or its Coulomb-attenuated version CAM-B3LYP.⁶⁷ The basis set used for these optimizations was the correlation consistent basis set developed by Dunning and corresponded to a double- ζ contraction for the valence shell plus a polarization and diffuse functions (Aug-cc-pVDZ⁶⁸). Starting from the X-ray diffraction structure,⁶⁹ the GS structure of the Cobalt(III) tris-ethylenediamine complex Λ -[Co(en)₃]³⁺ was obtained from a DFT optimization using the B3LYP functional in combination with a triple- ζ plus polarization (TZVP) basis sets from the Ahlrichs group.⁷⁰ In keeping with prior TDDFT studies of this complex^{42,43,45} the (*lel*)₃ conformer of the complex was used for all calculations. In the case of the [Eu(DPA)₃]³⁻ complexes, the B3LYP functional was used for the optimization of the GS. In these calculations, a 28-electron quasi-relativistic effective core potential (ECP)⁷¹ along with a matching ECP28MWB-SEG valence basis set⁷² were used to replace the Eu core and mimic relativistic valence-shell effects. For the ligand atoms, the double- ζ basis sets with a polarization and diffuse functions from Dunning and Hay⁷³ were used.

The CD and CPL dissymmetry factors were determined using TDDFT with the Amsterdam Density Functional software package (ADF2017).⁷⁴⁻⁷⁶ In these calculations, the influence of the functional was investigated by comparing the PBE^{77,78} (Perdew-Burke-Ernzerhof) generalized gradient approximation with its hybrid variant PBE0^{79,80} with 25 % exact exchange (eX) as well as with the functionals B3LYP^{65,66} and CAM-B3LYP⁶⁷ (range-separated exchange with eX varying from 19 to 65% with increasing interelectronic distance). The basis set corresponded to the quadruple- ζ STO all-electron basis sets with four sets of polarization functions for all atoms (QZ4P).⁸¹ The rotatory strengths as well as the *ED* moments were obtained within the Excitations module implemented in ADF.^{82,83} In the case of the organic compounds we used the nonrelativistic TDDFT module,⁸⁴ while for the Cobalt complex we included scalar relativistic effects via the Zeroth-Order Relativistic Approximation (ZORA).^{85,86} Solvent effects were taken into account by using the Conductor-Like Screening Model (COSMO) with the dielectric constant of 78.4 to model water.⁸⁷ The rotatory strengths were calculated using the dipole-length representation, which is known to be origin dependent.⁸⁸ In order to evaluate the impact of the origin dependence with the chosen basis sets on the results, additional rotatory strength calculations were performed using the dipole-velocity representation.⁸⁹ The comparison between the two formalisms (See Tables S2 and S3 of the SI) revealed very similar results between the two approaches, with calculated dissymmetry factors that only differ to the fourth digit in the case of the ketones. Therefore, only the results obtained with the dipole-length representation are provided in the article. The nature of the transitions involved in the CD and CPL spectra was analyzed with the help of the Natural Transition Orbitals (NTOs).⁹⁰ The NTOs were then visualized with the graphical user interface

of ADF.

2.2 Wavefunction Calculations

The multi-configurational and multi-reference calculations were carried out with the Molcas 8.0 software package.⁹¹ The calculations without spin-orbit coupling (denoted SR for ‘scalar relativistic’ in the following) employed the second-order Douglas-Kroll-Hess scalar relativistic Hamiltonian,^{92–95} in combination with the all-electron atomic natural orbital relativistically contracted (ANO-RCC) basis set from the Molcas library.^{96–98} The basis sets were contracted to the triple- ζ plus polarization (TZP) quality (Eu = 25s22p15d11f4g2h/8s7p4d3f2g1h; Co = 21s15p10d6f4g2h/6s5p3d2f1g; C, N, O, = 14s9p5d3f2g/4s3p2d1f; H = 8s4p3d1f/2s1p). State-averages calculations were performed either with the complete active space self-consistent field (CASSCF) approach or with the restricted active space self-consistent field (RASSCF) variant.⁶¹ Additionally, the dynamic correlation effects were treated using the complete active space perturbation theory at the second order (CASPT2).⁹⁹ Solvent effects were included via the Conductor Polarizable Continuum Model (CPCM) as implemented in Molcas with the dielectric constant of water.^{100,101} The SOC was then introduced within a state interaction among the basis of calculated spin-orbit free states using the restricted active space state interaction (RASSI) approach.⁶² A local modification of the Molcas code was used to gain access to the different transition dipole moments calculated after treatment of the SOC interaction.¹⁰² The nature of the active spaces was confirmed by the visualization of the SR natural orbitals (NOs), using the graphical user interface of the ADF suite.

For the organic set of bicyclic ketones investigated here, the choice of the active space (AS) was driven by the NTO analysis performed at the TDDFT level on the same molecules. Depending on the nature of the ketones investigated, two different AS were used, namely CAS(2,2) and CAS(4,3). The CAS(2,2) corresponds to two electrons in the oxygen lone pair (n) and the C=O π^* orbital, whereas the CAS(4,3) corresponds to the CAS(2,2) space augmented by the doubly occupied π orbital centered on the carbon double bond. The calculations employed the state-averaged formalism at the SR level by taking into account the three lowest singlet spin states in energy. For the CASPT2 calculations, an imaginary shift of 0.5 au in combination with the standard IPEA shift value of 0.25 au were used in order to avoid the presence of intruder states in the wavefunction. For the PT2-SO calculations, both the wave-functions and the energies from the SR CASPT2 calculations were employed.

For the Λ -[Co(en)₃]³⁺ complex, the state-average calculations were performed by taking into account 7 singlet, 6 triplet and 5 quintet spin states. The AS used for the CASSCF and CASPT2 calculations corresponded to a CAS(10,12). It contains the five 3d orbitals of the Co(III) center, plus the five pseudo-4d orbitals in order to take into account the double shell effect.¹⁰³ Additionally, two doubly occupied ligand-based orbitals that can form a covalent σ -bond with the 3d orbitals of formally e_g symmetry in the O_h parent symmetry were added in the AS. The actual symmetry of the complex is D_3 , but it is often more convenient to refer to the parent symmetry instead.⁴¹ Additional ligand based orbitals were also included in the AS via RASCI calculations (i.e. RAS without orbital optimizations) on top of the CASSCF wavefunctions by allowing single and double excitations from an additional RAS1 space into the principal RAS2 space. This RAS1 space was formed by the m highest-energy doubly occupied ligand-based orbitals, and the resulting AS are labelled as follows: RAS[$n,2,0,m,12,0$]CI, with n corresponding to the number

of active electrons and equal to $10+m \times 2$. The dynamic correlation effects were treated at the CASPT2 and RASPT2 level with an imaginary shift of 0.5 au. in combination with a modified IPEA shift of 0.5. The use of a larger value for the IPEA shift was found more appropriate to describe the relative energies of the different SR spin states in the case of transition metal complexes.^{104,105} For the PT2-SO calculations, the energies from the SR CASPT2 calculations and the wave-functions from the corresponding CASSCF / RASSCF calculations were employed in order to avoid symmetry breaking.

In the case of the Λ - and Δ -[Eu(DPA)₃]³⁻ complexes, several AS were investigated. Firstly, a CAS(6,7) was used with the 6 electrons of the Eu(III) ion spanning the seven 4*f* orbitals. Here, the state-average was performed on 7 septet, 5 quintet and 3 triplet spin states. The influence of the 5*d* orbitals was investigated with a combination of RASSCF and RASCI calculations. A RAS[6,0,1,0,7,5]SCF calculation, including 112 septet spin states, was performed on top of the CAS(6,7)SCF wavefunction to optimize the 5*d* orbitals. This RASSCF calculation allowed to create one particle in the RAS3 space containing the five 5*d* orbitals of the Eu(III) ion. From these optimized orbitals, RAS[6,0,1,0,7,5]CI calculations were then performed for the 7 septet, 5 quintet and 3 triplet spin states. Using a similar strategy, we also investigated the influence of the $\pi - \pi^*$ ligand-centered excitations. On top of the CAS(6,7) wave-function, a RAS[12,1,1,3,7,3]SCF calculation was performed in which the RAS1 space was formed by three doubly occupied π -type orbitals centered on the ligands and the RAS3 space was formed with the corresponding three empty π^* orbitals. From these optimized orbitals, RAS[12,1,1,3,7,3]CI calculations were then performed for 7 septet, 5 quintet and 3 triplet spin states. For the PT2-SO calculations, the energies from the SR CASPT2 calculations and the wave-functions from the corresponding CASSCF / RASSCF calculations were employed in order to avoid symmetry breaking.

2.3 CD and CPL Theory

The theory behind first-principles calculations of CD and CPL has been already extensively discussed,^{30,32,33} and therefore, only a few key points are discussed here. The probability of absorbing (or emitting) a photon with left vs. right circular polarization in a transition from an initial state *i* to a final state *f* is proportional to the rotatory strength R_{if} . In the case of an isotropic sample, R_{if} corresponds to the imaginary part of the scalar product between the *ED* transition moments $\boldsymbol{\mu}_{if}$ and the *MD* transition moments \boldsymbol{m}_{fi} , and is expressed in the length-dipole representation as follows:

$$\begin{aligned} R_{if} &= \text{Im} [\boldsymbol{\mu}_{if} \cdot \boldsymbol{m}_{fi}] \\ &= \text{Im} \left[\langle i | e \sum_n \boldsymbol{r}_n | f \rangle \cdot \langle i | \frac{e}{2m_e \cdot c} \sum_n \boldsymbol{L}_n + g_e \boldsymbol{S}_n | f \rangle \right] \end{aligned} \quad (2)$$

Here, the summations are over the Cartesian directions *n*, $g_e \simeq 2$ is the free electron *g*-factor, and \boldsymbol{L} and \boldsymbol{S} are the one-electron operators for the orbital and spin angular momentum, respectively. The spin contribution in Eq. 2 is zero if the states are spin-eigenfunctions. When the SOC becomes non negligible, the different states cannot anymore be described by pure spin-eigenfunctions and therefore, the transition matrix elements of the spin angular momentum operator may become non null. Moreover, the orbital angular momentum component in the magnetic transition dipole also generates intensity for a transition that is formally spin forbidden. The use of the dipole-length

representation in Eq. 2 leads to origin-dependent results. However, our own test calculations (vide supra), as well as other works (e.g. recently in Refs. 106 and 107 in the context of X-ray absorption spectroscopy), have shown that the origin dependence is not pronounced with the use of a good quality basis sets and the centering of mass or centering of nuclear charge coordinates. For the metal-centered transitions in a metal complex, placing the (gauge) origin at the metal center is a straightforward choice. Additionally, we verified that a small displacement of the gauge origin does not drastically modify the results (see Table S8). The electric- and magnetic-transition dipole moments (TDMs) were obtained in atomic units and then converted to cgs units using a conversion factor $\alpha = 471.44 \times 10^{40}$ as explained in Reference 108. The calculated R_{if} with Eq. 2 are therefore reported herein in cgs units of 10^{-40} esu² cm². If the calculations of the TDMs are performed in the GS geometry, one obtains the CD of the absorption, whereas evaluation of the TDMs using the ES structures gives the CPL. It is worth reiterating that Eq. 2 assumes no contributions from the coupling between the *ED* and the electric quadrupole (*EQ*) because of an orientational average of this contribution. Such assumption is valid for an isotropic sample such as in solution, but does not hold in the case of a crystal. From there, the dissymmetry factor g_{if} for an isotropic sample is given by

$$g_{if} = \frac{4 \cdot R_{if}}{D_{if}} \quad (3)$$

Here, D_{if} is a generalized ‘dipole’ strength and corresponds to the sum of the squared values of the *ED* ($|\mu_{if}|^2$), *MD* ($|m_{if}|^2$) and *EQ* ($|Q_{if}|^2$) transition moments as defined in Ref. 109. The reader is reminded that the magnitude of the *MD* and *EQ* moments are often found few order of magnitude smaller than the *ED* moment in organic compounds. Therefore, Eq. 3 is often seen in the literature with only the *ED* contribution in the denominator.

Using expressions from References 36 and 110, the absolute emission (I) and CPL (ΔI) intensities are given by

$$I = \frac{4 \cdot E^4}{3 \cdot c^3 \cdot \hbar^4} (|\mu_{if}|^2 + |m_{if}|^2 + |Q_{if}|^2) \quad (4)$$

$$\Delta I = \frac{16 \cdot E^4}{3 \cdot c^3 \cdot \hbar^4} (R_{if}) \quad (5)$$

where \hbar is the reduced Planck’s constant, c the speed of light and E the energy of the given transition expressed in cgs units. In that case, the emission and CPL intensities are expressed in energy unit per time unit per molecule. Experimentally, it is difficult to know how many molecules emit. Therefore, the calculated emission and CPL intensities were normalized to arbitrary relative units after Gaussian-broadening with a σ of 0.02 eV (ca. 160 cm⁻¹) in order to produce spectra for the [Eu(DPA)₃]³⁻ complex.

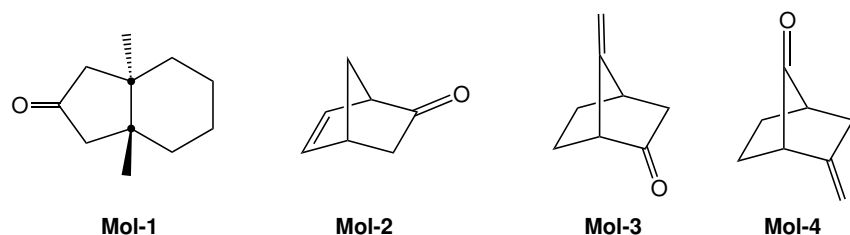


Figure 1: The set of organic molecules investigated here: **Mol-1** (*S,S*)-*trans*- β -hydrindanone, **Mol-2** (*1R,4R*)-norbornenone, **Mol-3** (*1R*)-7-methylenebicyclo[2.2.1]heptan-2-one and **Mol-4** (*1S*)-2-methylenebicyclo[2.2.1]heptan-7-one.

3 Results and Discussion

3.1 Chiroptical Properties of Organic Systems

3.1.1 Circular Dichroism of bicyclic Ketones

The calculations of chiroptical properties were first performed on a series of four bicyclic chiral ketones (**Mol-1** - **Mol-4**) depicted in Figure 1. The calculated CD for these systems are given in Table 1 and are compared to the experimental values available and previous theoretical values. Overall, the rotatory strengths (R) and the ED moments obtained at the CAS level were found in reasonable agreement with the data obtained using other methods. In both compounds, the CAS calculations were able to reproduce the sign and the correct order of magnitude of the chiroptical properties. The largest discrepancies between the different methods are observed in the case of **Mol-1**, where the g_{abs} calculated at the CASSCF and CASPT2 level are 2 to 3 times larger than those obtained at the TDDFT level (Table 1). Such differences can be explained by the degree of delocalization error present in the transition orbitals.¹¹¹ Indeed, the CAS calculations tend to produce too localized n and π^* orbitals (see Figure S2), which leads to a decrease of the ED moment and hence, an overestimation of g_{abs} . By comparison, the occupied NTOs from TDDFT calculations are less localized on the carbonyl bond, but the degree of delocalization error strongly depends on the amount of exact exchange (Table S1), and more generally on the functional used (Tables 1 and S2).

The amount of delocalization was also found crucial to properly reproduce the dissymmetry factors in **Mol-2**, **Mol-3** and **Mol-4**. As previously noted successively by Autschbach and by Caricato with calculations of the optical activity in **Mol-2**,^{33,115,116} the magnitude of the CD parameters is strongly connected to the partial charge transfer that occurs in the GS between the carbonyl group and the (C=C) bond and vice versa. This charge transfer is characterized by the NTO analyses which revealed that the transitions corresponded to an admixture of $n \rightarrow \pi^*$ and $\pi(\text{C}=\text{C}) \rightarrow \pi^*$ excitations (Table S6). The $\pi(\text{C}=\text{C}) \rightarrow \pi^*$ contribution is also visible in Figure 2 and in Figures S3 - S5, where both the occupied and vacant NTOs exhibit lobes on the (C=C) bond. The reader is reminded that using the same iso-surface value, the carbonyl transition of **Mol-1** appeared perfectly localized. In agreement with Pecul *et al.*,³⁷ the dissymmetry factors obtained with the B3LYP functional were found closer to experiment than those obtained with CAM-B3LYP. This agreement is however only due to an overestimation of the ED moments with

the former functional because of a too small delocalization. Interestingly, the CAS calculations lied in between the TDDFT results. Indeed, the CAS ED moments were found in better agreement with the experimental values than the TDDFT ones. This is particularly true when using the PT2 corrected wave-functions and energies, which increase the $\pi(C=C)$ character of the wave-function. Indeed, if the transition is mainly of $n \rightarrow \pi^*$ character ($\approx 85\%$) at the TDDFT level, the

Table 1: Principal calculated CD parameters for the lowest $n \rightarrow \pi^*$ transition in **Mol-1**, **Mol-2**, **Mol-3** and **Mol-4**. The calculated vertical transition energies (ΔE in eV), rotatory strengths (R in $\text{esu}^2 \text{cm}^2$), electric dipole moments (ED in $\text{esu}^2 \text{cm}^2$) and absorption dissymmetry factors (g_{abs}) are compared to previous calculated values and experimental data when available.^a

Compd	Level of Theory	ΔE	$R(\times 10^{-40})$	$ED(\times 10^{-40})$	$g_{\text{abs}}(\times 10^{-3})$	Ref. ^b
Mol-1	B3LYP	4.21	15.89	217	292.8	
	CAM-B3LYP	4.29	12.27	123	397.7	
	CAS(2,2)SCF	4.39	7.86	44	708.8	
	CAS(2,2)PT2	4.16	7.84	45	698.2	
	CAM-B3LYP	4.23	12.10	123	394.2	[39]
	CCSD	4.27	11.32	116	390.7	[39]
	Expt.	-	-	-	≈ 200	[112], [113]
Mol-2	B3LYP	4.09	57.68	4481	51.5	
	CAM-B3LYP	4.24	45.26	2690	67.3	
	CAS(4,3)SCF	4.64	59.13	4842	48.8	
	CAS(4,3)PT2	3.91	49.07	3423	57.3	
	CAM-B3LYP	4.18	45.57	2612	69.8	[37]
	CCSD	4.26	34.06	1716	79.4	[39]
	CC2	4.30	42.50	-	-	[114]
	Expt.	≈ 4.1	51.10	3600	56.8	[38]
Mol-3	B3LYP	4.19	30.91	3003	41.2	
	CAM-B3LYP	4.30	22.28	1551	57.4	
	CAS(4,3)SCF	4.69	36.28	2259	64.2	
	CAS(4,3)PT2	3.93	33.42	1814	73.7	
	CAM-B3LYP	4.24	21.92	1527	57.4	[37], [39]
	CCSD	4.31	18.74	1149	65.2	[39]
	CC2	4.17	23.40	-	-	[114]
	Expt.	≈ 4.1	20.50	1790	45.8	[38]
Mol-4	B3LYP	4.16	-26.91	3207	-33.5	
	CAM-B3LYP	4.30	-19.11	1480	-51.6	
	CAS(4,3)SCF	4.73	-26.90	1620	-66.4	
	CAS(4,3)PT2	3.93	-24.51	1256	-78.0	
	CAM-B3LYP	4.23	-18.61	1415	-52.6	[37], [39]
	CCSD	4.34	-15.26	974	-64.4	[39]
	CC2	4.37	-20.30	-	-	[114]
	Expt.	≈ 4.1	-15.20	1870	-32.5	[38]

^a additional data with other functionals and using the dipole-velocity representation for the calculation of R are available in Supporting Information. ^b present calculations where no reference is given.

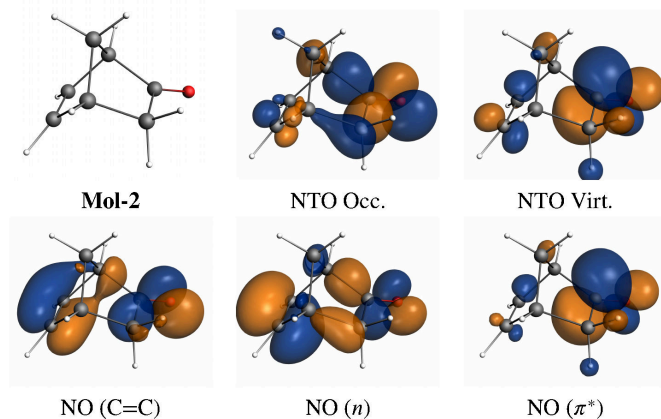


Figure 2: (Top) Iso-surface (± 0.03 a.u.) of the principal TDDFT (CAM-B3LYP) occupied (Occ.) and virtual (Virt.) natural transition orbitals (NTOs) for the GS→ES1 transition in **Mol-2**. (Bottom) Iso-surface (± 0.03 a.u.) of the state-averaged natural orbitals (NOs) of **Mol-2** from the CAS(4,3)SCF calculations.

$\pi(\text{C}=\text{C}) \rightarrow \pi^*$ character increases up to ca. 40 % for the CASPT2 results. This strong admixture of configurations leads to an increase of the charge transfer toward the C=C bond, and hence a decrease of the calculated *ED* moments. On the other hand, larger transition *MD* moments are calculated at the CAS level than at the DFT level, counterbalancing the reduction of the calculated *ED* moments.

3.1.2 Circularly Polarized Luminescence of bicyclic Ketones

The calculated CPL dissymmetry factors of the four ketones are given in Table 2. A relatively good agreement is obtained between the different levels of theory and with the experimental value in the case of **Mol-1**. A g_{lum} of 47×10^{-3} was calculated when using the CAM-B3LYP functional, while CCSD calculations gave a calculated dissymmetry factor of 35×10^{-3} cgs.³⁹ The difference between the two approaches results principally from an increase of the calculated *ED* moment at the CCSD level. In comparison, the CAS calculations gave the largest *ED* moment for this transition, leading to a theoretical g_{lum} of 29×10^{-3} in perfect agreement with the experiment. More interestingly, the CAS calculations were also able to reproduce the large decrease in magnitude between the CD and CPL dissymmetry factors. This behavior is explained principally by the large increase in magnitude of the *ED* moments associated to the $n \leftarrow \pi^*$ transitions. Indeed, in the ES the C=O bond is lengthened due to the population of an antibonding π^* orbital, and the carbonyl group loses its planar configuration in favor of a pyramidal one. This lowering of symmetry in the ES leads to a stronger localization of the electron density on the carbonyl bond that reinforces the *ED* moment.

A fairly good agreement was found between the different calculated g_{lum} of **Mol-2** and the experimental value. The Kohn-Sham results slightly overestimated the experimental value of 29×10^{-3} with calculated g_{lum} of 32 and 40×10^{-3} using the B3LYP and CAM-B3LYP functionals, respectively. On the other hand, the CAS calculations slightly underestimated the experimental dissymmetry factor with calculated values of 16 and 22×10^{-3} at the CASSCF and CASPT2

Table 2: Principal calculated CPL parameters for the lowest $n \leftarrow \pi^*$ transition in **Mol-1**, **Mol-2**, **Mol-3** and **Mol-4**. The calculated vertical transition energies (ΔE in eV), rotatory strengths (R in $\text{esu}^2 \text{cm}^2$), electric dipole moments (ED in $\text{esu}^2 \text{cm}^2$) and absorption dissymmetry factors (g_{lum}) are compared to previous calculated values and experimental data when available.^a

Compd	Level of Theory	Transition	ΔE	$R(\times 10^{-40})$	$ED(\times 10^{-40})$	$g_{\text{lum}}(\times 10^{-3})$	Ref ^b
Mol-1	B3LYP	GS \leftarrow ES1	3.19	11.40	826	55.2	
	CAM-B3LYP	GS \leftarrow ES1	3.27	8.95	755	47.4	
	CAS(2,2)SCF	GS \leftarrow ES1	3.10	7.22	968	29.8	
	CAS(2,2)PT2	GS \leftarrow ES1	3.11	7.09	989	28.7	
	CAM-B3LYP	GS \leftarrow ES1	3.21	8.85	749	47.2	[39]
	CCSD	GS \leftarrow ES1	3.20	7.74	887	34.8	[39]
	Expt.	GS \leftarrow ES1	-	-	-	≈ 27	[112], [113]
Mol-2	B3LYP	GS \leftarrow ES1	2.80	32.02	4009	31.9	
	CAM-B3LYP	GS \leftarrow ES1	2.92	27.59	2746	40.2	
	CAS(4,3)SCF	GS \leftarrow ES1	2.79	28.58	7239	15.8	
	CAS(4,3)PT2	GS \leftarrow ES1	2.42	30.26	5474	22.1	
	CAM-B3LYP	GS \leftarrow ES1	2.86	30.96	2699	45.9	[37]
	CCSD	GS \leftarrow ES1	2.85	12.52	1338	37.4	[39]
	CC2	GS \leftarrow ES1	2.54	12.6	-	-	[114]
	Expt.	GS \leftarrow ES1	-	-	-	29.4	[38]
Mol-3	B3LYP	GS \leftarrow ES1	2.93	18.59	1210	61.4	
		GS \leftarrow ES2	2.94	0.04	4203	0.4	
	CAM-B3LYP	GS \leftarrow ES1	3.01	12.91	1116	46.3	
		GS \leftarrow ES2	3.02	-1.32	3068	-1.7	
	CAS(2,2)SCF	GS \leftarrow ES1	2.96	17.75	1914	37.1	
		GS \leftarrow ES2	2.99	-1.66	4377	-1.5	
	CAS(2,2)PT2	GS \leftarrow ES1	2.77	16.86	1899	35.5	
		GS \leftarrow ES2	2.77	0.75	4166	0.7	
	CCSD	GS \leftarrow ES1	2.99	9.36	1311	28.5	[39]
		GS \leftarrow ES2	3.01	-0.87	2884	-1.2	[39]
Expt.		-	-	-	15.7	[38]	
Mol-4	B3LYP	GS \leftarrow ES1	2.20	-13.49	1163	-46.4	
		GS \leftarrow ES2	2.49	2.42	3992	2.4	
	CAM-B3LYP	GS \leftarrow ES1	2.35	-9.48	1372	-27.6	
		GS \leftarrow ES2	2.57	3.20	3047	4.2	
	CAS(2,2)SCF	GS \leftarrow ES1	2.36	-14.12	4249	-13.3	
		GS \leftarrow ES2	2.56	2.12	4069	2.1	
	CAS(2,2)PT2	GS \leftarrow ES1	1.96	-14.93	3392	-17.6	
		GS \leftarrow ES2	2.10	1.27	4107	1.2	
	CCSD	GS \leftarrow ES1	2.42	-6.82	1788	-15.2	[39]
		GS \leftarrow ES2	2.60	3.41	2995	4.5	[39]
Expt.		-	-	-	< 3	[38]	

^a additional data with other functionals and using the dipole-velocity representation for the calculation of R are available in Supporting Information. ^b present calculations where no reference is given.

level, respectively. Interestingly, CCSD produced a g_{lum} of similar magnitude,³⁹ but with calculated R and ED moment much smaller than those obtained with the TDDFT or CAS calculations. Similarly to **Mol-1**, the dissymmetry factor of **Mol-2** decreases when going from absorption to emission. In that case, the reduction is less pronounced in magnitude and follows the reduction of R . As explained by Caricato,¹¹⁷ the magnitude of R depends on the angle formed by the ED and MD moments, which is related to the dihedral angle formed by the C=O and C=C bonds. The rotatory strength is maximized when the two groups are coplanar, whereas R becomes null when they are out-of-plane. In **Mol-2**, the dihedral angle between the two fragments decreases from 142 to 120° when going from the GS to the ES. This decrease of co-planarity goes along with a decrease of charge transfer in the ES. Indeed, the $\pi(\text{C}=\text{C}) \rightarrow \pi^*$ character decreases from 40 to 28 % when going from the GS to the ES at the CASPT2 level.

Previous TDDFT and CCSD calculations performed on **Mol-3** and **Mol-4** have shown that for these two compounds the potential energy surface of the ES has two minima that exhibit very different chiroptical properties.^{37,39} These two minima are labelled ES1 and ES2 in the following discussion and correspond respectively to structures in which the carbonyl bond has bent away and toward the C=C bond upon the $n \rightarrow \pi^*$ excitation (see Figures S4 and S5). In **Mol-3**, ES1 exhibits a relatively large and positive calculated g_{lum} , whereas the dissymmetry factor associated to ES2 is small and even negative. The best agreement with the experimental value was obtained at the CCSD level with a calculated g_{lum} of 28×10^{-3} with the ES1 structure.³⁹ On the other hand, the TDDFT method gave much larger values with $g_{\text{lum}} = 46$ and 61×10^{-3} when using the CAM-B3LYP and B3LYP functionals, respectively. The CAS calculations were found lying in between these two methods with calculated dissymmetry factors of 37 and 35×10^{-3} at the CASSCF and CASPT2 level, respectively. In **Mol-4**, ES1 exhibits a sizable negative dissymmetry factor that ranges from -13 to -46×10^{-3} when going from CASSCF to B3LYP results, respectively, strongly overestimating the experimental value. Despite much larger vertical transition energies, the calculated g_{lum} associated to the ES2 structure were found closer to the experiment with $g_{\text{lum}} = 2$ and 1×10^{-3} at the CASSCF and CASPT2 level, respectively. As explained originally by Pecul *et al.*,³⁷ the CPL properties in **Mol-3** and **Mol-4** are related to the excited state ordering and to this purpose, the adiabatic transition energies must be taken into account. The ES1 structure is favored with the B3LYP functional for both **Mol-3** and **Mol-4** (see Table S5), however, the ES2 structure in **Mol-4** becomes almost iso-energetic to ES1 using the CAM-B3LYP functional, and hence, increasing the population of the ES2 structure. It is worth mentioning that previous adiabatic CAM-B3LYP and CC calculations have found the ES2 structure more stable than ES1.^{37,39}

3.2 CD parameters in a Cobalt(III) Complex

The CD spectrum of the Cobalt(III) complex $\Lambda\text{-}[\text{Co}(\text{en})_3]^{3+}$ has been extensively studied both experimentally and theoretically since the early work of Kobayashi and Mathieu.^{118,119} The rotatory strengths for the low-energetic part of the spectrum were characterized with measurements performed on the crystal structure at 80 K and in aqueous solution at room temperature.^{16,120} A first characteristic of the spectrum is the two CD bands around 21000 cm^{-1} that exhibit surprisingly large R with opposite sign ($R \approx \pm 55 \times 10^{-40}$ cgs). These bands were assigned to transitions into the excited singlet states spanning the E and A_2 irreducible representations (“irreps”) of the D_3 point group.^{121–124} In order to rationalize the magnitude and the sign of these R , several mod-

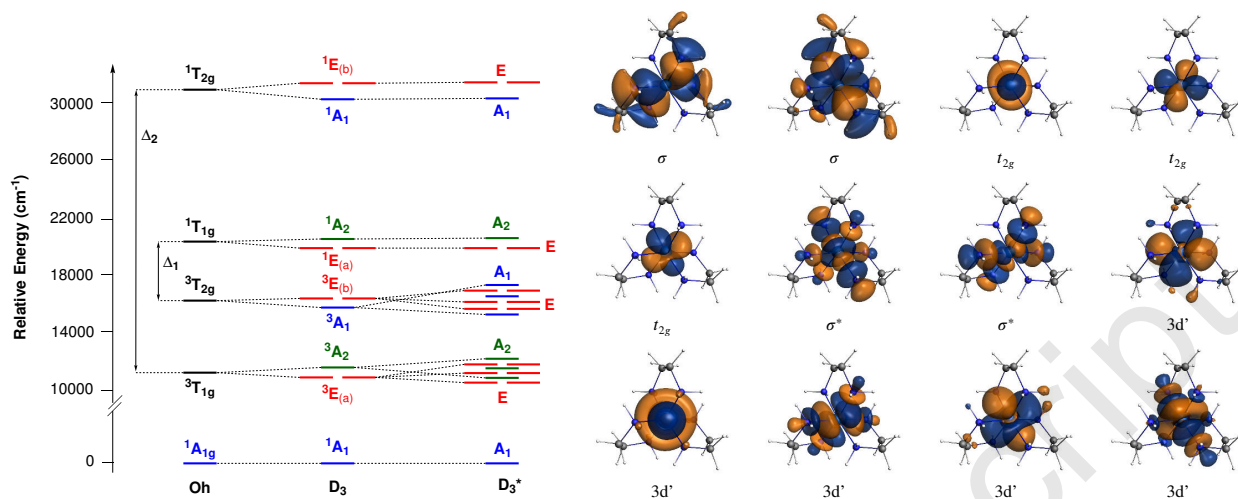


Figure 3: (left) Energy state diagram for the lowest states of Λ -[Co(en)₃]³⁺ extracted from CAS(10,12)SCF-SR/SO calculations performed on the experimental structure taken from Ref 69. The scalar (SR) and spin-orbit (SO) states of Λ -[Co(en)₃]³⁺ are labelled in the D_3 and D_3^* symmetry point groups, respectively. The parent SR states of O_h symmetry are given for comparison. (right) Plot of the iso-surfaces (± 0.03 au.) of the state-averaged natural orbitals.

els based on CF or ligand-field (LF) theory were developed during the 1960s and 1970s.^{125–129} Despite the large amount of analysis, none of these models were able to fully reproduce the experimental data as they were designed to describe only metal-centered $3d$ transitions. The importance of the metal-ligand interactions on the CD spectrum were then demonstrated by using restricted Hartree-Fock theory in the early 1990s,¹³⁰ and fully rationalized by Ziegler and coworkers with the use of TDDFT calculations.^{42–45,131} Another important feature in the CD spectrum is the presence of weakly intense CD bands corresponding to formally spin-forbidden transitions into the lowest excited triplet states.¹²⁰ To the best of our knowledge, the intensities of these transitions have not been studied yet with the help of *ab-initio* calculations, principally because of the necessity to include the SOC effects. This work represents therefore a first attempt to calculate the optical activity of these spin-forbidden $3d$ transitions.

3.2.1 Electronic Structure of Λ -[Co(en)₃]³⁺

The electronic structure of Λ -[Co(en)₃]³⁺ has been already described using CF theory,^{121–124} and different flavors of DFT and TDDFT calculations.^{42–45,131} Its principal features are summarized in Figure 3 with a state energy diagram obtained from the CAS(10,12)SCF-SR/SO calculations and plots of the iso-surfaces of the natural orbitals generated in this active space. At the SR level, the GS corresponds to the non-degenerate singlet 1A_1 in the D_3 symmetry point group. This state derives from an $^1A_{1g}$ singlet in the parent O_h symmetry point group and corresponds formally to a $t_{2g}^6 e_g^0$ electronic configuration. As shown in Figure 3, a strong covalent interaction of σ character takes place between the metal-centered orbitals spanning the e_g irreps and two ligand-centered orbitals of same symmetry. The bonding combinations of this interaction are doubly occupied and are labelled σ , whereas the antibonding combinations (labelled σ^*) are vacant and

destabilized in energy. On the other hand, the $3d$ orbitals of formally t_{2g} symmetry remain non-bonding in character, and are therefore doubly occupied in the GS. The first set of ESs is found lying around 11500 cm^{-1} above the GS and corresponds to a doubly degenerate triplet state 3E and a non-degenerate triplet 3A_2 . These SR triplet states derive from the splitting by the trigonal field of the parent ${}^3T_{1g}$ state and correspond to a $t_{2g}^5 e_g^1$ electronic configuration. The next triplet states are calculated at 16000 cm^{-1} above the GS and derive from the parent ${}^3T_{2g}$ state. Here, the triplet states span the 3E and 3A_1 irreps of the D_3 point group. Finally, the lowest singlet states are localized around 20000 and 31000 cm^{-1} above the GS and derive from the parent triply degenerate singlet states ${}^1T_{1g}$ and ${}^1T_{2g}$, respectively. Introduction of the SOC does not drastically change the electronic structure. The energy of the SR singlet states is barely affected by the SOC, whereas the components of the SR triplets 3E and 3A_1 on one side, and the components of 3E and 3A_2 on the other side, are allowed to mix with each others, leading to a small energetic splitting of the triplet states.

3.2.2 CD parameters of Λ -[Co(en) $_3$] $^{3+}$

The calculated energies, ED moments and R associated to the lowest spin-allowed transitions of Λ -[Co(en) $_3$] $^{3+}$ are given in Table 3. Experimentally, the lowest spin-allowed transitions, measured at ca. 21000 cm^{-1} , correspond to excitations into the excited singlet states E and A_2 , with R values for the crystal structure of $+59.9$ and -55.7×10^{-40} cgs,¹³² respectively. A relatively good agreement with the experimental data was obtained at the TDDFT level. For instance, the use of the CAM-B3LYP functional leads to calculated R of $+42.79$ and -33.17×10^{-40} cgs for the E and A_2 transitions, respectively. As shown in Tables S11 and S12, the magnitude of the calculated R is strongly functional and solvent dependent, while the energy of the transitions is always slightly overestimated. Nevertheless, our calculated values are of the same order of magnitude with those previously calculated with a similar approach.^{42,45} At the CASPT2 level, the E and A_2 bands are calculated at 19950 and 20867 cm^{-1} , respectively, in good agreement with the crystal structure data. However, the R associated to these bands are relatively small with calculated values of 8.50

Table 3: Calculated energies (ΔE , cm^{-1}), electric dipole moment (ED , $\times 10^{-40}$ esu 2 cm 2) and rotatory strengths (R , $\times 10^{-40}$ esu 2 cm 2) for the formally lowest spin-allowed transitions in Λ -[Co(en) $_3$] $^{3+}$. The CAS and RAS results are compared to the TDDFT and experimental data when available.^a

	CAS(10,12)PT2			RAS[18,2,0,4,12,0]CI-PT2			CAM-B3LYP			Expt.	
	ΔE	ED	R	ΔE	ED	R	ΔE	ED	R	ΔE	R
E	19950	15	8.50	19549	111	28.46	22643	323	42.79	20760 ^b	+59.9 ^b
										21300 ^c	+4.80 ^c
A_2	20867	22	-9.04	20546	176	-25.13	22598	382	-33.17	20990 ^b	-55.7 ^b
										23700 ^c	-0.4 ^c
A_1	29007	0	0.00	28653	0	0.00	29117	0	0		
E	29862	0	-0.01	29441	91	-0.08	29526	295	-0.24	29400 ^c	+0.70 ^c

^a The state labels correspond to those of the D_3^* double point group as used in Figure 3 and derive from the scalar ${}^1T_{1g}$ and ${}^1T_{2g}$ state of O_h parentage. ^b Experimental data on crystal structure at 80 K extracted from Ref 45. ^c Experimental data in solution at room temperature extracted from Ref 120.

and -9.01×10^{-40} cgs for E and A_2 , respectively. Such small calculated values can be explained by the too localized character of the orbitals included in the active space. Indeed, as originally described by Mason and Richardson,^{123,133} the rotatory strengths of the $d-d$ transitions may gain in magnitude via a dynamic coupling that involves a metal-ligand polarization mechanism. Similarly, Fan and Ziegler have shown more recently that the intensity of the calculated R at TDDFT level is related to the metal-ligand mixing in the valence orbitals.⁴⁵ To this purpose, we increased the size of our active space by including m doubly occupied orbitals that are principally localized on the diamine ligands (see Section 2 for more details). The results are presented in Table 3 for the RAS[18,2,0,4,12,0] active space, while additional results can be found in Tables S7 - S10 of the SI. It is clearly visible in Table 3 that the introduction of the ligand based orbitals in the active space leads to a large increase of the calculated R associated to the $A_1 \rightarrow E$ and $A_1 \rightarrow A_2$ transitions, with calculated values of +28.46 and -25.13×10^{-40} cgs. The ligand-based orbitals responsible for this increase in magnitude of R are shown in Figure S6 and correspond to σ -type bonding metal-ligand orbitals with some $4p$ Cobalt character. The excitations from these orbitals into the valence metal-centered orbitals leads to a mixing of *gerade* and *ungerade* configurations in the wavefunction that strongly increases the magnitude of the ED transition moments, and hence the rotatory strengths (see Tables S7 and S10).

The second set of excited singlet states is calculated around ca. 29000 cm^{-1} above the GS from the CASPT2 calculations. As expected from the selection rules of group theory, the $A_1 \rightarrow A_1$ does not exhibit any optical activity as it is both formally ED and MD forbidden. On the other hand, the $A_1 \rightarrow E$ transition is permitted and an extremely small and negative R is obtained at the CAS level. The increase of the active space leads again to a sizable increase in magnitude of the ED moment and for the largest RAS space investigated here, a R of -0.08×10^{-40} cgs is calculated. For comparison, a better agreement is obtained at the TDDFT level for the excitation energies, while a slightly more negative R is calculated (see Tables S11 and S12). The difference of sign with the experimental data is attributed to structural changes between the fully characterized crystal structure used for the calculations and the admixture of structures present in solution. For instance, the RAS calculations performed on the optimized structure of Λ -[Co(en)₃]³⁺ gave a small and positive R of 0.33×10^{-40} cgs (see Table S10), in good agreement with the 0.70×10^{-40} cgs measured in solutions.

The calculated CD parameters for the spin-forbidden transitions are given in Table 4 and are compared to the experimental data. The magnitude of the calculated R is a direct consequence of the SOC and is proportional to the triplet-singlet energy gaps Δ_1 and Δ_2 shown on Figure 3. Indeed, in the O_h symmetry point group the $^3T_{1g}$ triplets are allowed to mix with the $^1T_{2g}$ states, whereas the $^3T_{2g}$ states couple with the $^1T_{1g}$ states. At the CAS(10,12)PT2-SO level, the calculated R for the states with $^3T_{1g}$ parentage are almost null, while very small R are calculated for some of the states with $^3T_{2g}$ parentage. Introduction of ligand-to-metal excited configurations in the wavefunction via the RASCI calculations leads to a slight improvement in the magnitude of the calculated transition moments. This is particularly true for the excited states of $^3T_{2g}$ parentage, where a sizable increase of the ED moment is obtained at the RASCI level. Numerical agreement with the experimental data is not achieved, but the calculations reproduce the difference in magnitude of R between the two sets of transitions.

The origin of the small calculated R for these transitions are threefold. Firstly, the CAS and RAS calculations overestimate the SR Δ_1 and Δ_2 energy gaps, which reduce the admixture of

singlet states in the triplet wavefunctions via the SOC, and hence reduce the magnitude of the transition dipole moments. This argument is particularly true for the transitions involving the state of ${}^3T_{2g}$ parentage, as the ${}^1T_{1g}$ states are closely lying above (see Figure 3). Indeed, if one recalculates the CD parameters of Λ -[Co(en) $_3$] $^{3+}$ by using the RAS[18,2,0,4,12,0]CI wavefunctions in combination with the experimental excitation energies, the calculated R for the first two transition in ${}^3T_{2g}$ increases from ca. $|0.4|$ to $|2.1| \times 10^{-40}$ cgs, respectively (see Table S9). Secondly, the use of the effective one-electron Atomic Mean Field Spin-Orbit (AMFI) operator for the treatment of the SOC can lead to a loss of accuracy in the calculations of the transition dipole moments for spin-forbidden transitions. For instance, the calculated ED moments and R of singlet-triplet transitions in a set of ketones were found almost twice smaller when using the AMFI operator compared to a full two-electron spin-orbit operator.¹³⁴ Finally, it is worth mentioning that a more accurate calculation of the R should require to take into account the influence of the vibronic and Jahn-Teller effects which in both cases, by lowering the symmetry, would bring additional intensity in the ED transition moments.

3.3 CPL parameters of an Europium(III) Complex

The [Eu(DPA) $_3$] $^{3-}$ complex represents a good model compound for the calculation of CPL parameters in Ln-based systems. Chemically, the main interest of this system resides in the fact that the DPA ligands, which generate the Λ or Δ helical arrangement, are easily substituted in order to take advantage of the *antenna effect*, and hence, tune the chiroptical properties.¹³⁵ Therefore, the [Eu(DPA) $_3$] $^{3-}$ complex is often seen as the molecular backbone for the design of chiral biological

Table 4: Calculated energies (ΔE , cm^{-1}), electric dipole moment (ED , $\times 10^{-40}$ $\text{esu}^2 \text{cm}^2$), rotatory strengths (R , $\times 10^{-40}$ $\text{esu}^2 \text{cm}^2$) for the formally lowest spin-forbidden transitions in Λ -[Co(en) $_3$] $^{3+}$. The CAS and RAS results are compared to the TDDFT and experimental data when available.^a

		CAS(10,12)PT2			RAS[18,2,0,4,12,0]CI-PT2			Expt.	
		ΔE	ED	R	ΔE	ED	R	ΔE	R
$({}^3T_{1g})$	E	12010	0.65	0.01	11610	0.48	0.01	13500	-0.005 ^b
	A_2	12119	0.24	0.04	11722	0.36	0.04		+0.068 ^c
	E	12226	0.77	0.05	11825	0.98	0.06		
	A_2	12458	0.08	-0.02	12057	0.08	-0.04		
	E	12793	0.15	-0.07	12396	0.069	-0.05		
$({}^3T_{2g})$	A_2	13001	0.07	0.00	12605	0.06	0.00		
	A_1	16048	0.27	-0.13	15649	2.00	-0.35	17000	+0.07 ^b
	E	16122	1.29	0.23	15722	2.24	0.32		+0.32 ^c
	E	16622	0.34	-0.18	16166	0.20	0.13		
	A_1	16831	0.39	0.03	16363	0.30	0.02		
	A_1	17109	0.41	0.06	16827	0.28	-0.04		
E	17178	0.12	-0.03	16765	0.69	0.09			

^a The state labels correspond to those of the D_3^* double point group as used in Figure 3 and derives from the scalar ${}^3T_{1g}$ and ${}^3T_{2g}$ state of O_h parentage. ^b Experimental data in solution at room temperature extracted from Ref 120. ^c Experimental data on crystal structure at 80 K extracted from Ref 120.

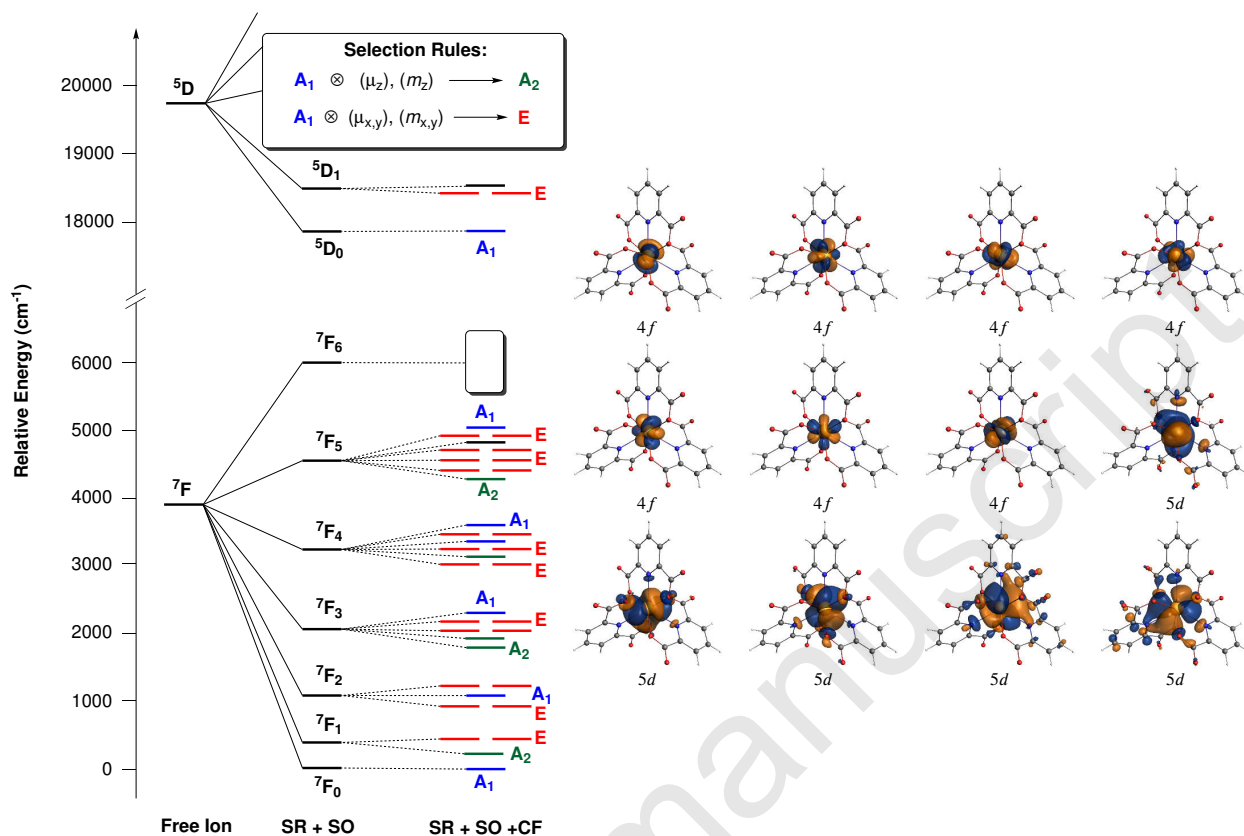


Figure 4: (left) Energy state diagram for the lowest states of Λ -[Eu(DPA)₃]³⁻ extract from CAS(6,7)PT2-SO calculations performed on the optimized structure. The SO states of Λ -[Eu(DPA)₃]³⁻ are labelled using the D_3^* double point group of symmetry. (right) Plot of the isosurfaces (± 0.03 au.) of the state-averaged natural orbitals included in the RAS[6,0,2,0,7,5] space.

sensors.^{24,136} Theoretically, the principal difficulty in the CPL calculations of Ln complexes arises in the correct estimation of the *ED* TDMs associated to the *4f* transitions. It has been shown recently that the use of the CASSCF approach, with an AS containing the seven *4f* orbitals, is able to recover at least some parts of the *ED* moments.^{137,138} To obtain qualitative agreement with the experiment, one must also take into account the different mechanisms that drive the intensity of the chiroptical activity, namely the *static* and *dynamic coupling*.²⁷ The former corresponds to the mixing of the $4f^n$ electronic configurations with the excited configurations $4f^{(n-1)}5d^1$ in order to break the parity rule. This mechanism is strongly related to potential covalent effects between the Ln center and the coordinating ligands. On the other hand, the *dynamic coupling* mechanism corresponds to the coupling between the quadrupole moment of the Ln center with the induced dipole moment of the ligands generated by the oscillating light.¹³⁹ This mechanism corresponds to the mixing of the $4f^n$ wavefunction with additional configurations resulting from intra-ligand excitations.

3.3.1 Electronic Structure of $[\text{Eu}(\text{DPA})_3]^{3-}$

The electronic structure of $[\text{Eu}(\text{DPA})_3]^{3-}$ has been already extensively studied both theoretically and experimentally,^{56,140–143} and therefore, is only briefly reminded. As described on the left hand side of Figure 4, the $4f^6$ electronic configuration of the Eu(III) free ion gives rise via the Coulomb repulsion to a septet ground term 7F that is well separated from the lowest excited term 5D . Introduction of the SOC leads to a splitting of these terms into the Russel-Saunders levels characterized by their total angular momentum J . For the free ion, the ground level corresponds to the non-degenerate 7F_0 , and the excited levels ordering goes with the increasing value of J . Similarly, the excited quintet term 5D is split into five 5D_J levels with $J = 0$ being the lowest in energy. The trigonal CF generated by the DPA ligands then lifts the degeneracy of these levels and mixes the different m_J states. In Figure 4, the states of $[\text{Eu}(\text{DPA})_3]^{3-}$ are labelled using the irreps of the D_3^* symmetry double point group. The free ion 7F_0 gives the non-degenerate A_1 state as the GS in the complex. The trigonal environment splits the 7F_1 level into 3 states spanning the E and A_2 irreps, whereas the degeneracy of the 7F_2 level is lifted into $2E \oplus A_1$ states.

The optical activity in Eu(III)-based complexes is principally due to transitions from the excited 5D_0 state into the different CF states of the 7F_J levels.^{135,143} In $[\text{Eu}(\text{DPA})_3]^{3-}$, the excited A_1 state of 5D_0 parentage is calculated at 20690 and 17760 cm^{-1} above the GS at the SCF-SO and PT2-SO level, respectively. For comparison, this emitting state was characterized experimentally between 17180 and 17300 cm^{-1} above the GS,^{144–146} revealing the importance to take into account the dynamic correlation effects in the calculations to properly reproduce the electronic spectra. At the CASPT2-SO level, the calculated energies for the ${}^7F_1 \leftarrow {}^5D_0$, ${}^7F_2 \leftarrow {}^5D_0$ and ${}^7F_3 \leftarrow {}^5D_0$ emissions are of ca. 17375, 16610 and 15597 cm^{-1} , respectively. These calculated values slightly overestimate the experimental emission energies that were characterized with CPL measurements.¹⁴⁷ Indeed, the experimental CPL spectrum of Λ - $[\text{Eu}(\text{DPA})_3]^{3-}$ exhibits positive CPL bands at 16949 and 15455 cm^{-1} , corresponding to the emissions into the 7F_1 and 7F_3 states, respectively, whereas a negative CPL band, assigned to the ${}^7F_2 \leftarrow {}^5D_0$ transitions, was measured at 16260 cm^{-1} . The calculated ${}^7F_4 \leftarrow {}^5D_0$ transition energy is of ca. 14494 cm^{-1} in perfect agreement with experimental the positive and negative CPL bands measured at ca. 14400 cm^{-1} .

3.3.2 CPL parameters of Λ - and Δ - $[\text{Eu}(\text{DPA})_3]^{3-}$

The calculated emission and CPL spectra of Λ - $[\text{Eu}(\text{DPA})_3]^{3-}$ with the different active spaces investigated are shown in Figure 5, while the corresponding spectra for the Δ enantiomer are shown in Figure S8 of the SI. The reader is reminded that the emission (I) and the CPL (ΔI) intensities are proportional to the calculated dipole moments and rotatory strengths, respectively, via the Equations 4 and 5 given in Section 2.3. At the CAS(6,7)PT2-SO level, only two bands are visible in the emission spectrum. The strongest band in emission is calculated around 17500 cm^{-1} and corresponds to the ${}^7F_1 \leftarrow {}^5D_0$ transitions. These transitions are intense due to their predominant MD character. A weaker band is calculated at ca. 14500 cm^{-1} and corresponds to the ${}^7F_4 \leftarrow {}^5D_0$ transitions, which contain enough ED character to be visible in the spectrum. As shown in Table S14, the ${}^7F_{2,3} \leftarrow {}^5D_0$ transitions have too small transition moments to be characterized in the calculated emission spectrum. The corresponding calculated CPL spectrum reveal a more complex structure with the presence of additional bands. The most intense band in emission (${}^7F_1 \leftarrow {}^5D_0$) is now split into two bands with a very intense and positive one, corresponding to

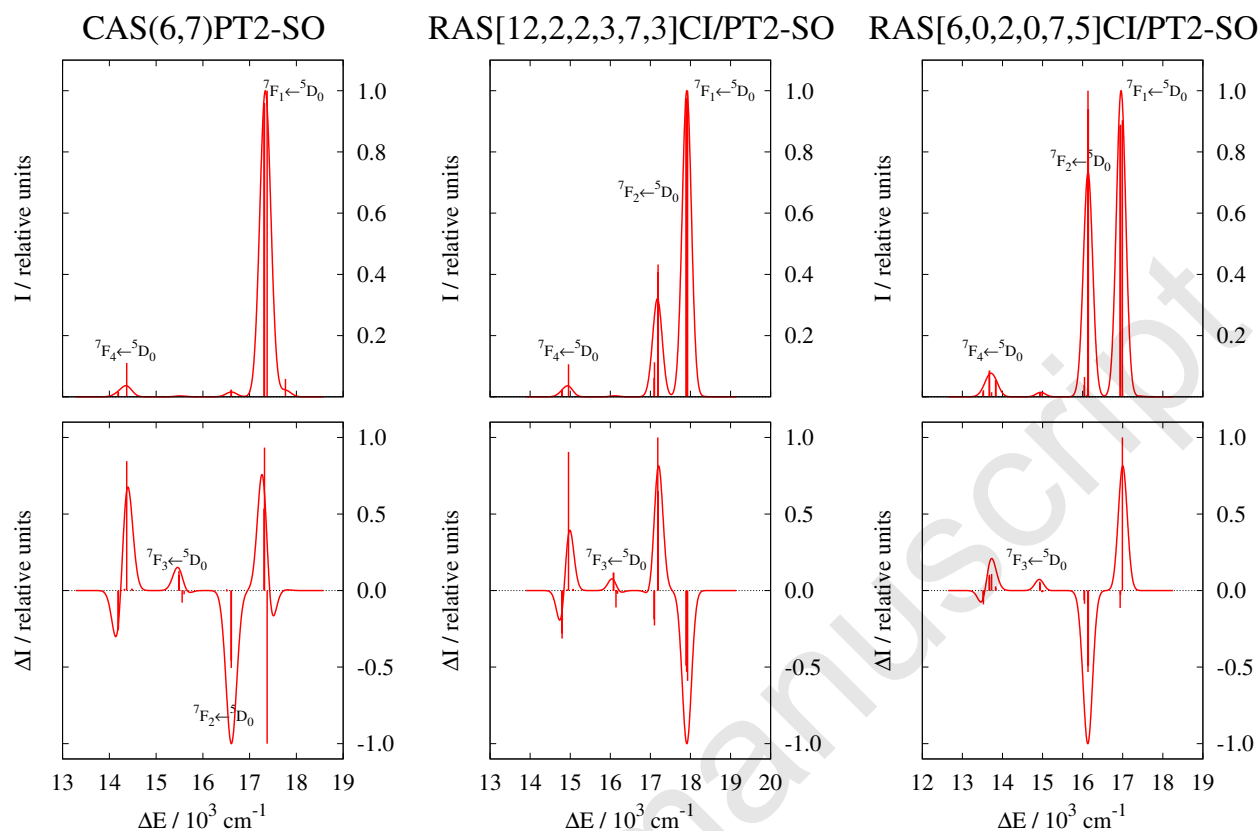


Figure 5: Normalized emission (I) and CPL (ΔI) spectra in Λ -[Eu(DPA)₃]³⁻ for the ${}^7F_J \leftarrow {}^5D_0$ ($J = 0 - 4$) transitions obtained at the CAS(6,7)PT2-SO, RAS[12,2,2,3,7,3]Cl/PT2-SO and RAS[6,0,2,0,7,5]Cl/PT2-SO levels. The numerical values used for these spectra are given in Table S13. The dipole moments used for the emission plots take into account the ED , MD and EQ transition moments.

$E \leftarrow A_1$ transitions, and a negative band corresponding to the $A_2 \leftarrow A_1$ transition. A second band in CPL appears at 16610 cm^{-1} and corresponds to an emission into one of the E states of the 7F_2 level. Similarly, emissions into the E and A_2 states of the 7F_4 level generate a negative and positive signal, respectively in the CPL spectrum. It is important to note that both the calculated dipole moments and rotatory strengths of the ${}^7F_3 \leftarrow {}^5D_0$ transitions are extremely small (Table S14), but the associated dissymmetry factors are excessively large. This behavior only results from the definition of g in Equation 3 and a division by almost zero.

Introduction of the ligand-based π and π^* orbitals at the RAS[12,2,2,3,7,3]Cl/PT2 level strongly affects the shape of the calculated spectra. In the emission spectrum, an additional band appears at ca. 17100 cm^{-1} and corresponds to emissions into the E states of the 7F_2 level. The increase of the emission intensity is characterized in Table S14 by the large increase in magnitude of the calculated dipole moments. For instance, the calculated dipole moment of the first $E \leftarrow A_1$ emission increases from 18 to $317 \cdot 10^{-44} \text{ cgs}$ when going from CAS(6,7)PT2-SO to RAS[12,2,2,3,7,3]Cl/PT2-SO, respectively. It is important to mention that this increase in magnitude results only from the ED contributions and not from the MD ones. This is in good agreement with the experimental observations and the *hypersensitivity* of the ${}^7F_2 \leftarrow {}^5D_0$ emissions to the environment. Overall, the

emission intensities of the other transitions are not affected by the presence of the ligand orbitals. The shape of the CPL spectrum is also strongly modified when the ligand π orbitals are included in the active space with an inversion of sign of the two strongest CPL bands. Indeed, at the RAS level the ${}^7F_1 \leftarrow {}^5D_0$ transitions afford a negative CPL band whereas the ${}^7F_2 \leftarrow {}^5D_0$ transitions leads to a positive CPL band.

The presence of the Eu(III) $5d$ orbitals in the RAS[6,0,2,0,7,5] space also modify the shape of the calculated spectra. Similarly to the introduction of the ligand-based π orbitals, the mixing of the $4f^6$ CFs with the $4f^65d^1$ CFs leads to a strong increase in magnitude of the ${}^7F_2 \leftarrow {}^5D_0$ emission band, and in a lesser extent of the ${}^7F_4 \leftarrow {}^5D_0$ one, when compared to the CAS spectrum. This increase in magnitude is found much more pronounced than the one calculated with the ligand π orbitals. For instance, the calculated dipole moment of the excitation into the lowest E state of the 7F_2 level increases from 317 to 1076 10^{-44} cgs when using the RAS[12,2,2,3,7,3] and RAS[6,0,2,0,7,5] spaces, respectively (see Table S14). On the other hand, the magnitude of the calculated dipole moment for the emissions into the 7F_1 and 7F_3 levels is much less affected by the $5d$ orbitals because of their ED forbidden character. The CPL spectrum calculated at the RAS[6,0,2,0,7,5]CI/PT2-SO level is comparatively similar to the one obtained at the CAS(6,7)PT2-SO level. The ${}^7F_1 \leftarrow {}^5D_0$ and ${}^7F_2 \leftarrow {}^5D_0$ transitions afford positive and negative CPL bands, respectively. The large increase of the ED moment for these transitions leads to a strong increase of the calculated R , and hence of the CPL intensities. The bands associated to emissions into the 7F_3 and 7F_4 levels afford in both cases positive CPL bands of similar intensities to the one calculated at the CAS level.

The comparison with the CPL measurements performed in solution by Riehl and coworker,¹⁴⁷ reveals that the best agreement in term of energy and sign of the CPL bands is obtained when the Eu(III) $5d$ orbitals are included in the active space. Indeed, CPL bands with positive, negative and positive sign were experimentally assigned to the ${}^7F_1 \leftarrow {}^5D_0$, ${}^7F_2 \leftarrow {}^5D_0$ and ${}^7F_3 \leftarrow {}^5D_0$ transitions, respectively, whereas the ${}^7F_4 \leftarrow {}^5D_0$ transitions exhibited two CPL bands with positive and negative ΔI . Introduction of the ligand π orbitals in the active space does not allow to produce the correct signs of the CPL bands and has a much smaller influence on the magnitude of the calculated dipole moments. These results suggest, surprisingly, that the effects from the *static coupling* are more important in $[\text{Eu}(\text{DPA})_3]^{3-}$ than those from the *dynamic coupling*. However, in order to achieve quantitative numerical agreement with the experimental data, it is likely necessary to combine the two strategies and design much larger active spaces. Active spaces of the envisioned size are out of reach when using the RAS method used in this work, but will likely be feasible with spin-orbit matrix product state (MPS-SO) techniques.¹⁴⁸

4 Conclusions and Perspectives

The CD and CPL properties of four organic ketones, the Λ - $[\text{Co}(\text{en})_3]^{3+}$ complex, and of the $[\text{Eu}(\text{DPA})_3]^{3-}$ enantiomers were investigated using CASSCF/PT2 and RASSCF/PT2 wavefunctions. The use of these multi-reference approaches, in combination with a treatment of the spin-orbit coupling *a posteriori* via the RASSI method, allowed us to characterize the chiroptical properties for both the spin-allowed and spin-forbidden transitions of the systems investigated.

The study of the organic ketones have shown that our WFT approach performs in comparable

1
2
3
4 agreement with the mono-determinantal methods (TDDFT or CC) that are usually used in the case
5 of spin-allowed transitions. In that case, the reduction of the dissymmetry factors associated to
6 the $n \leftrightarrow \pi^*$ transitions between absorption and emission was properly reproduced by our calcula-
7 tions and explained by the large increase in magnitude of the ED moment in emission. Secondly,
8 a satisfactory agreement was obtained between the TDDFT and WFT results for the calculated
9 rotatory strengths of the spin-allowed $3d - 3d$ transitions in Λ -[Co(en)₃]³⁺. This agreement was
10 achieved at the RAS level by including in the wavefunction additional configurations correspond-
11 ing to excitations from the two highest occupied ligand-based orbitals into the Cobalt centered $3d$
12 orbitals. This mixing of configurations led to a large increase of the calculated ED moments, and
13 hence, of the rotatory strengths. At our best level of calculations, the calculated R were found
14 slightly underestimating the magnitude of the experimental values characterized for the crystal
15 structure. Using the same approach, the CD properties of the spin-forbidden transitions were also
16 investigated. At the RAS level, the numerical agreement was not achieved but the calculated R
17 were found in the right order of magnitude. Additionally, it was shown that the magnitude of the
18 calculated R is strongly dependent from the SOC between the SR excited triplet and singlet spin
19 states and the energy gap between these states.

20
21
22
23 Finally, the emission and CPL properties associated to the $4f-4f$ excitations in the [Eu(DPA)₃]³⁻
24 complex were also calculated using WFT. The magnitude of the calculated emission and CPL
25 spectra was found to be very sensitive to the nature of the chosen active space. The introduction
26 of the ligand based $\pi - \pi^*$ excitations led to an expected increase of the emission intensities of
27 the ED -allowed ${}^7F_2 \leftarrow {}^5D_0$ transitions because of a large increase of the calculated ED moments.
28 However, introduction of these ligand configurations led to drastic changes in the CPL spectrum
29 with an inversion of sign for the two largest bands in opposition with the experimental characteri-
30 zations. The introduction of the $4f^55d^1$ configurations in the wavefunction also led to a very large
31 increase in magnitude of the calculated ED moments, and hence of the emission intensities. Addi-
32 tionally, the signs and the energies of the calculated CPL bands were found in good agreement with
33 the experimental data. These results indicate that the introduction of the $4f^55d^1$ configurations in
34 the wavefunction are necessary in order to calculate CPL spectra that qualitatively reproduce the
35 experimental ones. However, in order to reach quantitative agreement, introduction of both the
36 $5d$ and ligand π orbitals in the active space would also be necessary. For this purpose, the density
37 matrix renormalization group-based MPS-SO approach,^{148,149} is a method of choice and will be
38 investigated in follow-up work.
39
40
41
42
43

44 Acknowledgments

45
46 The authors acknowledge support from the European Research Council under the European Union's
47 Horizon 2020 research and innovation program (ERC-CoG MULTIPROSMM, Grant agreement
48 N° 725184). FG and BLG thank the French GENCI/IDRIS-CINES centers for high-performance
49 computing resources. FG and BLG acknowledge the Stratégie d'Attractivité Durable (SAD18006
50 - LnCPLSMM) for financial support. BA thanks Rennes Métropole for a travel fellowship. JA
51 acknowledges support from the National Science Foundation, Grant N° CHE-1560881. We thank
52 the Center for Computational Research (CCR) at the University at Buffalo for providing compu-
53 tational resources.
54
55
56
57
58
59
60

Supporting Information

Additional data regarding the KS-TDDFT and WFT CD and CPL parameters for **Mol-1 - Mol-4**, natural transition orbitals, WFT and TDDFT CD parameters of Λ -[Co(en)₃]³⁺ and emission and CPL spectra of Δ -[Eu(DPA)₃]³⁻. This material is available free of charge via the Internet at <http://pubs.acs.org>.

References

- [1] Heffern, M. C.; Matosziuk, L. M.; Meade, T. J. Lanthanide Probes for Bioresponsive Imaging *Chem. Rev.* **2014**, *114*, 4496–4539.
- [2] Noyori, R. Asymmetric Catalysis: Science and Opportunities (Nobel Lecture) *Angew. Chem. Int. Ed.* **2002**, *41*, 2008–2022.
- [3] McConnell, O.; Bach, A.; Balibar, C.; Byrne, N.; Cai, Y.; Carter, G.; Chlenov, M.; Di, L.; Fan, K.; Goljer, I. *et al.* Enantiomeric separation and determination of absolute stereochemistry of asymmetric molecules in drug discovery—Building chiral technology toolboxes *Chirality* **2007**, *19*, 658–682.
- [4] Zhang, J.; Albelda, M. T.; Liu, Y.; Canary, J. W. Chiral nanotechnology *Chirality* **2005**, *17*, 404–420.
- [5] Brandt, J. R.; Salerno, F.; Fuchter, M. J. The Added Value of Small-Molecule Chirality in Technological Applications *Nature Reviews Chemistry* **2017**, *1*, 0045.
- [6] Huck, N. P. M.; Jgar, W. F.; de Lange, B.; Feringa, B. L. Dynamic Control and Amplification of Molecular Chirality by Circularly Polarized Light *Science* **1996**, *273*, 1696–1688.
- [7] Hauptert, L. M.; Simpson, G. J. Chirality in Nonlinear Optics *Annu. Rev. Phys. Chem.* **2009**, *60*, 345–365.
- [8] Nguyen, L. A.; He, H.; Pham-Huy, C. Chiral Drugs: An Overview *Int. J. Biomed. Sci.* **2006**, *2*, 85–100.
- [9] Chhabra, N.; Aseri, M. L.; Padmanabhan, D. A Review of Drug Isomerism and Its Significance *Int. J. Appl. Basic Med. Res.* **2013**, *3*, 16–18.
- [10] Polavarapu, P. L. Renaissance in chiroptical spectroscopic methods for molecular structure determination *Chem. Rec.* **2007**, *7*, 125–136.
- [11] Polavarapu, P. L. Molecular Structure Determination Using Chiroptical Spectroscopy: Where We May Go Wrong? *Chirality* **2012**, *24*, 909–920.
- [12] Berova, N.; Polavarapu, P. L.; Nakanishi, K.; Woody, R. W., Eds.; *Comprehensive Chiroptical Spectroscopy*; volume 1: Instrumentation, Methodologies, and Theoretical Simulations John Wiley & Sons: New York, 2012.

- 1
2
3
4 [13] Berova, N.; Polavarapu, P. L.; Nakanishi, K.; Woody, R. W., Eds.; *Comprehensive Chiroptical Spectroscopy*; volume 2: Applications in Stereochemical Analysis of Synthetic
5 Compounds, Natural Products, and Biomolecules John Wiley & Sons: New York, 2012.
6
7
8 [14] Sánchez-Carnero, E.; Agarrabeita, A. R.; Moreno, F.; Maroto, B. L.; Muller, G.; Or-
9 tiz, M.; de la Moya, S. Curcularly Polarized Luminescence from Simple Organic Molecules
10 *Chem. Eur. J.* **2015**, *21*, 13488–13500.
11
12 [15] Tanak, H.; Inoue, Y.; Mori, T. Circularly Polarized Luminescence and Circular Dichroisms
13 in Small Organic Molecules: Correlation between Excitation and Emission Dissymmetry
14 Factors *Chem. Photo Chem.* **2018**, *2*, 386–402.
15
16 [16] McCaffery, A. J.; Mason, S. F. The Electronic Spectra, Optical Rotatory Power and Abso-
17 lute Configuration of Metal Complexes. The Dextro-tris (Ethylenediamine)Cobalt(III) ion
18 *Mol. Phys.* **1963**, *6*, 359–371.
19
20 [17] Mason, S. F.; Norman, B. J. Outer-Sphere Co-ordination and Optical Activity in Transition-
21 Metal Complexes *Chem. Commun.* **1965**, 335–336.
22
23 [18] Richardson, F. S. Theory of Optical Activity in the Ligand-Field Transitions of Chiral Tran-
24 sition Metal Complexes *Chem. Rev.* **1979**, *79*, 17–36.
25
26 [19] Shen, C.; Anger, E.; Srebro, M.; Vanthuynne, N.; Deol, K. K.; Jefferson, T. D.; Muller, G.;
27 Williams, J. A. G.; Toupet, L.; Roussel, C. *et al.* Straightforward access to mono- and
28 bis-cycloplatinated helicenes that display circularly polarized phosphorescence using crys-
29 tallization resolution methods *Chem. Sci.* **2014**, *5*, 1915–1927.
30
31 [20] Zhang, X.-P.; Chang, V. Y.; Liu, J.; Yang, X.-L.; Huang, W.; Li, Y.; Li, C.-H.; Muller, G.;
32 You, X.-Z. Potential Switchable Circularly Polarized Luminescence from Chiral Cyclomet-
33 alated Platinum(II) Complexes *Inorg. Chem.* **2015**, *54*, 143–152.
34
35 [21] Coughlin, F. J.; Westrol, M. S.; Oyler, K. D.; Byrne, N.; Kraml, C.; Zysman-Colman, E.;
36 Lowry, M. S.; Bernhard, S. Synthesis, Separation, and Circularly Polarized Luminescence
37 Studies of Enantiomers of Iridium(III) Luminophores *Inorg. Chem.* **2008**, *47*, 2039–2048.
38
39 [22] Riehl, J. P.; Richardson, F. S. Circularly Polarized Luminescence Spectroscopy *Chem. Rev.*
40 **1986**, *86*, 1–16.
41
42 [23] Bruce, J. I.; Parker, D.; Lopinski, S.; Peacock, R. Survey of Factors Determining the Circu-
43 larly Polarised Luminescence of Macrocycle Lanthanide Complexes in Solution *Chirality*
44 **2002**, *14*, 562–567.
45
46 [24] Muller, G. Luminescent Chiral Lanthanide(III) Complexes as Potential Molecular Probes
47 *Dalton Trans.* **2009**, 9692–9707.
48
49 [25] Muller, G. Circularly Polarized Luminescence. In *Luminescence of Lanthanide Ions*;
50 de Bettencourt-Dias, A., Ed.; John Wiley & Sons, Inc.: Chichester, 2014 77–123.
51
52
53
54
55
56
57
58
59
60

- 1
2
3
4 [26] Carr, R.; Evans, N. H.; Parker, D. Lanthanide Complexes as Chiral Probes Exploiting
5 Circularly Polarized Luminescence *Chem. Soc. Rev.* **2012**, *41*, 7673–7686.
6
7 [27] Zinna, F.; Di Bari, L. Lanthanide Circularly Polarized Luminescences: Bases and Appli-
8 cations *Chirality* **2015**, *27*, 1–13.
9
10 [28] Lunkley, J. L.; Shirotani, D.; Yamanari, K.; Kaizaki, S.; Muller, G. Extraordinary
11 Circularly Polarized Luminescence Activity Exhibited by Cesium Tetrakis(3-Heptafluoro-
12 butylryl-(+)-Camphorato) Eu(III) Complexes in EtOH and CHCl₃ Solutions *J. Am. Chem.*
13 *Soc.* **2008**, *130*, 13814–13815.
14
15 [29] Lunkley, J. L.; Shirotani, D.; Yamanari, K.; Kaizaki, S.; Muller, G. Chiroptical Spectra of a
16 Series of Tetrakis((+)-3-Heptafluorobutylrylcamphorato)lanthanide(III) with an Encapsu-
17 lated Alkali Metal Ion: Circularly Polarized Luminescence and Absolute Chiral Structures
18 for the Eu(III) and Sm(III) Complexes *Inorg. Chem.* **2011**, *50*, 12724–12732.
19
20 [30] Crawford, T. D. Ab Initio Calculation of Molecular Chiroptical Properties *Theor. Chem.*
21 *Acc.* **2006**, *115*, 227–245.
22
23 [31] Autschbach, J. Computing chiroptical properties with first-principles theoretical methods:
24 Background and illustrative examples *Chirality* **2009**, *21*, E116–E152.
25
26 [32] Longhi, G.; Castiglioni, E.; Koshoubu, J.; Mazzeo, G.; Abbate, S. Circularly Polarized
27 Luminescence: A Review of Experimental and Theoretical Aspects *Chirality* **2016**, *28*,
28 697–707.
29
30 [33] Srebro-Hooper, M.; Autschbach, J. Calculating Natural Optical Activity of Molecules from
31 First Principles *Annu. Rev. Phys. Chem.* **2017**, *68*, 399–420.
32
33 [34] Ianeselli, A.; Orioli, S.; Spagnolli, G.; Faccioli, P.; Cupellini, L.; Jurinovich, S.; Men-
34 nucci, B. Atomic Detail of Protein Folding Revealed by an Ab Initio Reappraisal of Circular
35 Dichroism *J. Am. Chem. Soc.* **2018**, *140*, 3674–3682.
36
37 [35] Santoro, F.; Jacquemin, D. Going Beyond the Vertical Approximation with Time-
38 Dependent Density Functional Theory *Wires Comput. Mol. Sci.* **2016**, *6*, 460–486.
39
40 [36] Pritchard, B.; Autschbach, J. Calculation of Vibrationally Resolved Circularly Polarized
41 Luminescence of d-Camphorquinone and (S,S)-trans-b-Hydrindanone *ChemPhysChem*
42 **2010**, *11*, 2409–2415.
43
44 [37] Pecul, M.; Ruud, K. The optical activity of β , γ -enones in ground and excited states using
45 circular dichroism and circularly polarized luminescence *Phys. Chem. Chem. Phys.* **2011**,
46 *13*, 643–650.
47
48 [38] Schippers, P. H.; van de Ploeg, J. P. M.; Dekkers, H. P. J. Circular Polarization in the
49 Fluorescence of β , γ -Enones: Distortion in the $n^1\pi^*$ States *J. Am. Chem. Soc.* **1983**, *105*,
50 84–89.
51
52
53
54
55
56
57
58
59
60

- 1
2
3
4 [39] McAlexander, H. R.; Crawford, T. D. Simulation of Circularly Polarized Luminescence
5 Spectra using Coupled Cluster Theory *J. Chem. Phys.* **2015**, *142*, 154101.
6
7 [40] Autschbach, J. Spectroscopic Properties obtained from Time-Dependent Density Func-
8 tional Theory (TD-DFT). In *Computational Inorganic and Bioinorganic Chemistry*, Vol. 9;
9 Solomon, E. I.; Scott, R. A.; King, R. B., Eds.; John Wiley & Sons: Chichester, UK, 2009
10 71–90.
11
12 [41] Autschbach, J. Calculating electronic optical activity of coordination compounds. In *Com-*
13 *prehensive Inorganic Chemistry II*, Vol. 9; Poeppelemeier, K.; Reedijk, J., Eds.; Elsevier:
14 Oxford, UK, 2013 407–426.
15
16 [42] Autschbach, J.; Jorge, F. E.; Ziegler, T. Density functional calculations on electronic cir-
17 cular dichroism spectra of chiral cobalt(III) complexes *Inorg. Chem.* **2003**, *42*, 2867–2877.
18
19 [43] Jorge, F. E.; Autschbach, J.; Ziegler, T. On the Origin of the Optical Activity in the d–d
20 Transition Region of Tris-bidentate Co(III) and Rh(III) Complexes *Inorg. Chem.* **2003**, *42*,
21 8902–8910.
22
23 [44] Fan, J.; Seth, M.; Autschbach, J.; Ziegler, T. Circular dichroism of trigonal dihedral
24 Chromium(III) complexes: A theoretical study based on open-shell time-dependent den-
25 sity functional theory *Inorg. Chem.* **2008**, *47*, 11656–11668.
26
27 [45] Fan, J.; Ziegler, T. On the Origin of Circular Dichroism in Trigonal Dihedral d⁶ Complexes
28 of Bidentate Ligands Containing Only σ -Orbitals. A Qualitative Model Based on a Density
29 Functional Theory Study of Λ -[Co(en)₃]³⁺ *Chirality* **2008**, *20*, 938–950.
30
31 [46] Le Guennic, B.; Hieringer, W.; Görling, A.; Autschbach, J. Density functional calculations
32 of electronic circular dichroism spectra of the transition metal complexes [M(phen)₃]²⁺ (M
33 = Fe, Ru, Os) *J. Phys. Chem. A* **2005**, *109*, 4836–4846.
34
35 [47] Rudolph, M.; Autschbach, J. Performance of conventional and range-separated hybrid den-
36 sity functionals in calculations of electronic circular dichroism spectra of transition metal
37 complexes *J. Phys. Chem. A* **2011**, *115*, 14677–14686.
38
39 [48] Rudolph, M.; Autschbach, J. Calculation of Optical Rotatory Dispersion and Electronic
40 Circular Dichroism for Tris-Bidentate group 8 and 9 metal complexes, with emphasis on
41 exciton coupling *J. Phys. Chem. A* **2011**, *115*, 2635–2649.
42
43 [49] Mazzeo, G.; Fusè, M.; Longhi, G.; Rimoldi, I.; Cesarotti, E.; Crispini, A.; Abbate, S.
44 Vibrational Circular Dichroism and Chiroptical Properties of Chiral Ir(III) Luminescent
45 Complexes *Dalton Trans.* **2016**, *45*, 992–999.
46
47 [50] Karimova, N. V.; Aikens, C. M. Chiroptical Activity in BINAP- and DIOP-Stabilized Octa-
48 and Undecagold Clusters *J. Phys. Chem. C* **2018**, *122*, 11051–11065.
49
50 [51] Richardson, F. S.; Faulkner, T. R. Optical Activity of the f-f Transitions in Trigonal Diher-
51 dral (D₃) Lanthanide(III) Complexes. I. Theory *J. Chem. Phys.* **1982**, *76*, 1595–1606.
52
53
54
55
56
57
58
59
60

- 1
2
3
4 [52] Saxe, J. D.; Faulkner, T. R.; Richardson, F. S. Optical Activity of the f-f Transitions in
5 Trigonal Dimeral (D_3) Lanthanide(III) Complexes. II. Calculations *J. Chem. Phys.* **1982**,
6 *76*, 1607–1623.
7
- 8 [53] Judd, B. R. Optical Absorption Intensities of Rare-Earth Ions *Phys. Rev.* **1962**, *127*, 750–
9 761.
10
- 11 [54] Ofelt, G. S. Intensities of Crystal Spectra of Rare-Earth Ions *J. Chem. Phys.* **1962**, *37*, 511–
12 520.
13
- 14 [55] Berardozi, R.; Di Bari, L. Optical Activity in the Near-IR Region: The $\lambda = 980$ nm
15 Multiplet of Chiral Yb^{3+} Complexes *Chem. Phys. Chem.* **2015**, *16*, 2868–2875.
16
- 17 [56] Wu, T.; Kessler, J.; Bouř, P. Chiral Sensing of Amino Acids and Proteins Chelating with
18 Eu^{III} Complexes by Raman Optical Activity Spectroscopy *Phys. Chem. Chem. Phys.* **2016**,
19 *18*, 23803–23811.
20
- 21 [57] Jurinovich, S.; Pescitelli, G.; Di Bari, L.; Mennucci, B. A TDDFT/MMPol.PCM Model for
22 the Simulation of Exciton-Coupled Circular Dichroism Spectra *Phys. Chem. Chem. Phys.*
23 **2014**, *16*, 16407–16418.
24
- 25 [58] Berardozi, R.; Pescitelli, G.; Di Pietro, S.; Resta, C.; Ballistreri, F. P.; Pappalardo, A.;
26 Tomaselli, G. A.; Di Bari, L. Synthesis, Structural Characterization, and Chiroptical Stud-
27 ies of Bidentate Salen-Type Lanthanide (III) Complexes *Chirality* **2015**, *27*, 857–863.
28
- 29 [59] Wu, T.; Hudecová, J.; You, X.-Z.; Urbanová, M.; Bouř, P. Comparison of the Electronic
30 and Vibrational Optical Activity of a Europium(III) Complex *Chem. Eur. J.* **2015**, *21*, 5807–
31 5813.
32
- 33 [60] Kerridge, A. The Complete-Active-Space Self-Consistent-Field Approach and Its Applica-
34 tion to Molecular Complexes of the f-Elements. In *Computational Methods in Lanthanide
35 and Actinide Chemistry*; Dolg, M., Ed.; John Wiley & Sons, Inc.: Chichester, 2015 121–
36 146.
37
- 38 [61] Roos, B. O.; Taylor, P. R.; Siegbahn, P. E. M. A Complete Active Space SCF method
39 (CASSCF) using a density matrix formulated super-CI approach *Chem. Phys.* **1980**, *48*,
40 157–173.
41
- 42 [62] Malmqvist, P.-A.; Roos, B. O.; Schimmelpfennig, B. The restricted active space (RAS)
43 state interaction approach with spin-orbit coupling *Chem. Phys. Lett.* **2002**, *357*, 230–240.
44
- 45 [63] Frisch, M. J.; Trucks, G. W.; Schlegel, H. B.; Scuseria, G. E.; Robb, M. A.; Cheese-
46 man, J. R.; Scalmani, G.; Barone, V.; Mennucci, B.; Petersson, G. A. *et al.* “Gaussian 09,
47 Revision D.01”, Gaussian, Inc., Wallingford CT, 2009. URL: www.gaussian.com.
48
- 49 [64] Li, X.; Frisch, M. J. Energy-Represented Direct Inversion in the Iterative Subspace within
50 a Hybrid Geometry Optimization Method *J. Chem. Theory Comput.* **2006**, *2*, 835–839.
51
52
53
54
55
56
57
58
59
60

- 1
2
3
4 [65] Lee, C.; Yang, W.; Parr, R. G. Development of the Colle-Salvetti correlation-energy formula into a functional of the electron density *Phys. Rev. B* **1988**, *37*, 785–789.
- 5
6
7 [66] Becke, A. D. Density-functional thermochemistry. III. The role of exact exchange *J. Chem. Phys.* **1993**, *98*, 5648–5652.
- 8
9
10 [67] Yanai, T.; Handy, N. A New Hybrid Exchange-Correlation Functional Using the Coulomb-Attenuating Method *Chem. Phys. Lett.* **2004**, *393*, 51–57.
- 11
12
13 [68] Dunning Jr., T. H. Gaussian Basis Set for Use in Correlated Molecular Calculations. I. The Atoms Boron Through Neon and Hydrogen *J. Chem. Phys.* **1989**, *90*, 1007–1023.
- 14
15
16 [69] K., N.; Shiro, M.; Saito, Y.; Kuroya, H. Studies on Crystals of Metallic Tri-ethylenediamine-Complexes. II. The Crystal Structure of Sodium D-Tris-Ethylendiamine-Cobalt(III) chloride Hexahydrate, 2D-[Coen₃]Cl₃NaCl 6H₂O *Bull. Chem. Soc. Jpn.* **1956**, *30*, 158–164.
- 17
18
19
20
21
22 [70] Weigend, F.; Ahlrichs, R. Balanced Basis Sets of Split Valence, Triple Zeta Valence and Quadrupole Zeta Valence Quality for H to Rn: Design and Assessment of Accuracy *Phys. Chem. Chem. Phys.* **2005**, *7*, 3297–3305.
- 23
24
25
26 [71] Dolg, M.; Stoll, H.; Preuss, H. Energy-Adjusted Ab-Initio Pseudopotentials for the Rare Earth Elements *J. Chem. Phys.* **1989**, *90*, 1730.
- 27
28
29
30 [72] Cao, X.; Dolg, M. Segmented Contraction Scheme for Small-Core Lanthanide Pseudopotential Basis Sets *J. Molec. Struct. Theochem* **2002**, *581*, 139–147.
- 31
32
33 [73] Dunning Jr., T. H.; Hay, P. J. Gaussian Basis Sets for Molecular Calculations. In *Methods of Electronic Structure Theory*; Schaefer, H. F., Ed.; Springer US: New York, 1977 1–27.
- 34
35
36 [74] te Velde, G.; Bickelhaupt, F. M.; Baerends, E. J.; van Gisbergen, S. J. A.; Fonseca Guerra, C.; Snijders, J. G.; Ziegler, T. Chemistry with ADF *J. Compt. Chem.* **2001**, *22*, 931–967.
- 37
38
39
40 [75] Fonseca Guerra, C.; Snijders, J. G.; te Velde, G.; Baerends, E. J. Towards an order-N DFT method *Theor. Chem. Acc.* **1998**, *99*, 391.
- 41
42
43
44 [76] Baerends, E. J.; Ziegler, T.; Atkins, A. J.; Autschbach, J.; Bashford, D.; Baseggio, O.; Bérces, A.; Bickelhaupt, F. M.; Bo, C.; Boerritger, P. M. *et al.* “ADF2017, SCM, Theoretical Chemistry, Vrije Universiteit, Amsterdam, The Netherlands, <https://www.scm.com>”, 2017.
- 45
46
47
48
49 [77] Perdew, J. P.; Burke, K.; Ernzerhof, M. Generalized Gradient Approximation Made Simple *Phys. Rev. Lett.* **1996**, *77*, 3865–3868.
- 50
51
52
53 [78] Perdew, J. P.; Burke, K.; Ernzerhof, M. Generalized Gradient Approximation Made Simple [Phys. Rev. Lett. 77, 3865 (1996)] *Phys. Rev. Lett.* **1997**, *78*, 1396.
- 54
55
56
57
58
59
60

- 1
2
3
4 [79] Ernzerhof, M.; Scuseria, G. E. Assessment of the Perdew–Burke–Ernzerhof exchange-
5 correlation functional *J. Chem. Phys.* **1999**, *110*, 5029–5036.
6
7 [80] Adamo, C.; Barone, V. Toward reliable density functional methods without adjustable
8 parameters: The PBE0 model *J. Chem. Phys.* **1999**, *110*, 6158–6170.
9
10 [81] van Lenthe, E.; Baerends, E. J. Optimized Slater–type basis sets for the elements 1 – 118
11 *J. Comput. Chem.* **2003**, *24*, 1142–1156.
12
13 [82] Autschbach, J.; Ziegler, T. Calculating molecular electric and magnetic properties from
14 time dependent density functional perturbation theory *J. Chem. Phys.* **2002**, *116*, 891–896.
15
16 [83] Autschbach, J.; Ziegler, T.; Patchkovskii, S.; van Gisbergen, S. J. A.; Baerends, E. J.
17 Chiroptical properties from time-dependent density functional theory. II. Optical rotations
18 of small to medium sized organic molecules. *J. Chem. Phys.* **2002**, *117*, 581–592.
19
20 [84] van Gisbergen, S. J. A.; Snijders, J. G.; Baerends, E. J. Implementation of Time-Dependent
21 Density Functional Response Equations *Comput. Phys. Comm.* **1999**, *118*, 119–138.
22
23 [85] van Lenthe, E.; Baerends, E. J.; Snijders, J. G. Relativistic regular two-component Hamil-
24 tonians *J. Chem. Phys.* **1993**, *99*, 4597–4610.
25
26 [86] van Lenthe, E.; Baerends, E. J.; Snijders, J. G. Relativistic Total Energy Using Regular
27 Approximations *J. Chem. Phys.* **1999**, *101*, 9783.
28
29 [87] Pye, C. C.; Ziegler, T. An Implementation of the Conductor-Like Screening Model of
30 Solvation within the Amsterdam Density Functional Package *Theor. Chem. Acc.* **1999**, *101*,
31 396–408.
32
33 [88] Autschbach, J. Time-dependent density functional theory for calculating origin-
34 independent optical rotation and rotatory strength tensors *ChemPhysChem* **2011**, *12*, 3224–
35 3235.
36
37 [89] Autschbach, J.; Ziegler, T.; van Gisbergen, S. J. A.; Baerends, E. J. Chiroptical properties
38 from time-dependent density functional theory. I. Circular dichroism spectra of organic
39 molecules. *J. Chem. Phys.* **2002**, *116*, 6930–6940.
40
41 [90] Martin, R. L. Natural Transition Orbitals *J. Chem. Phys.* **2003**, *118*, 4775–4777.
42
43 [91] Aquilante, F.; Autschbach, J.; Carlson, R. K.; Chibotaru, L. F.; Delcey, M. G.; Vico, L. D.;
44 Fdez. Galván, I.; Ferré, N.; Frutos, L. M.; Gagliardi, L. *et al.* Molcas 8: New capabilities
45 for multiconfigurational quantum chemical calculations across the periodic table *J. Comput.*
46 *Chem.* **2016**, *37*, 506–541.
47
48 [92] Douglas, M.; Kroll, N. M. Quantum electrodynamical corrections to the fine structure of
49 helium *Ann. Phys.* **1974**, *82*, 89–155.
50
51 [93] Hess, B. A. Applicability of the no-pair equation with free-particle projection operators to
52 atomic and molecular structure calculations *Phys. Rev. A* **1985**, *32*, 756–763.
53
54
55
56
57
58
59
60

- 1
2
3
4 [94] Hess, B. A. Relativistic electronic-structure calculations employing a two-component no-
5 pair formalism with external-field projection operators *Phys. Rev. A* **1986**, *33*, 3742–3748.
6
7 [95] Wolf, A.; Reiher, M.; Hess, B. A. The generalized Douglas-Kroll transformation *J. Chem.*
8 *Phys.* **2002**, *117*, 9215–9226.
9
10 [96] Widmark, P.-O.; Malmqvist, P.-Å.; Roos, B. O. Density-matrix averaged atomic natural
11 orbital (ANO) basis-sets for correlated molecular wave-functions. I. First row atoms *Theor.*
12 *Chim. Acta* **1990**, *77*, 291–306.
13
14 [97] Roos, B. O.; Lindh, R.; Malmqvist, P.-Å.; Veryazov, V.; Widmark, P.-O. Main group
15 atoms and dimers studied with a new relativistic ANO basis set *J. Phys. Chem. A* **2004**,
16 *108*, 2851–2858.
17
18 [98] Roos, B. O.; Lindh, R.; Malmqvist, P.-Å.; Veryazov, V.; Widmark, P.-O. New relativistic
19 ANO basis sets for transition metal atoms *J. Phys. Chem. A* **2005**, *109*, 6575.
20
21 [99] Andersson, K.; Malmqvist, P.-Å.; Roos, B. O.; Sadlev, A. J.; Wolinski, K. Second-order
22 perturbation theory with a CASSCF reference function *J. Phys. Chem.* **1990**, *94*, 5483–
23 5488.
24
25 [100] Cossi, M.; Rega, N.; Scalmani, G.; Barone, V. Polarizable Dielectric Model of Solvation
26 with Inclusion of Charge Penetration Effects *J. Chem. Phys.* **2001**, *114*, 5691.
27
28 [101] Barone, V.; Cossi, M. Quantum Calculation of Molecular Energies and Energy Gradients in
29 Solution by a Conductor Solvent Model *J. Phys. Chem. A* **1998**, *102*, 1995–2001.
30
31 [102] Gendron, F.; Fleischauer, V. E.; Duignan, T. J.; Scott, B. L.; Löble, M. W.; Cary, S. K.;
32 Kozimor, S.; Bolvin, H.; Neidig, M. L.; Autschbach, J. Magnetic circular dichroism of
33 UCl_6^- in the ligand-to-metal charge-transfer spectral region *Phys. Chem. Chem. Phys.* **2017**,
34 *19*, 17300–17313.
35
36 [103] Bolvin, H. $d \rightarrow d$ Spectrum and High-Spin/Low-Spin Competition in d^6 Octahedral Coordination
37 Compounds: Ab Initio Study of Potential Energy Curves *J. Phys. Chem. A* **1998**,
38 *102*, 7525–7534.
39
40 [104] Kepenekian, M.; Robert, V.; Le Guennic, B. What Zeroth-Order Hamiltonian for CASPT2
41 Adiabatic Energetics of $Fe(II)N_6$ Architectures ? *J. Chem. Phys.* **2009**, *131*, 114702.
42
43 [105] Vela, S.; Fumanal, M.; Ribas-Ariño, J.; Robert, V. On the Zeroth-Order Hamiltonian for
44 CASPT2 Calculations of Spin Crossover Compounds *J. Comput. Chem.* **2016**, *37*, 947–953.
45
46 [106] Lestrangé, P. J.; Egidi, F.; Li, X. The Consequences of Improperly Describing Oscillator
47 Strengths beyond the Electric Dipole Approximation *J. Chem. Phys.* **2015**, *143*, 234103.
48
49 [107] Sørensen, L. K.; Guo, M.; Lindh, R.; Lundberg, M. Applications to metal K pre-edges of
50 transition metal dimers illustrate the approximate origin independence for the intensities in
51 the length representation *Mol. Phys.* **2017**, *115*, 174–189.
52
53
54
55
56
57
58
59
60

- 1
2
3
4 [108] Pedersen, T. B.; Hansen, A. E. Ab-initio Calculation and Display of the Rotatory Strength
5 Tensor in the Random Phase Approximation. Method and Model Studies *Chem. Phys. Lett.*
6 **1995**, *246*, 1–8.
7
- 8 [109] DeBeer George, S.; Petrenko, T.; Neese, F. Time-Dependent Density Functional Calcula-
9 tions of Ligand K-Edge X-ray Absorption Spectra *Inorg. Chim. Acta* **2008**, *361*, 965–972.
10
- 11 [110] Longhi, G.; Castiglioni, E.; Abbate, S.; Lebon, F.; Lightner, D. A. Experimental and
12 Calculated CPL Spectra and Related Spectroscopic Data of Camphor and Other Simple
13 Chiral Bicyclic Ketones *Chirality* **2013**, *25*, 589–599.
14
- 15 [111] Autschbach, J.; Srebro, M. Delocalization error and ‘functional tuning’ in Kohn-Sham
16 calculations of molecular properties *Acc. Chem. Res.* **2014**, *47*, 2592–2602.
17
- 18 [112] Emeis, C. A.; Oosterhoff, L. J. Emission of Circularly Polarized Radiation by Optically
19 Active Compounds *Chem. Phys. Lett.* **1967**, *1*, 129–132.
20
- 21 [113] Emeis, C. A.; Oosterhoff, L. J. The $n - \pi^*$ Absorption and Emission of Optically Ac-
22 tive *trans*- β -Hydrindanone and *trans*- β -Thiohydrindanone *J. Chem. Phys.* **1971**, *54*, 4809–
23 4819.
24
- 25 [114] Viswanatha, C. b.; Helmich-Paris, B.; Hättig, C. Circularly polarized fluorescence and
26 phosphorescence calculations on organic molecules using the approximate coupled-cluster
27 model CC2 *Phys. Chem. Chem. Phys.* **2018**, *20*, 21051–21061.
28
- 29 [115] Moore, B. I.; Srebro, M.; Autschbach, J. Analysis of Optical Activity in Terms of Bonds
30 and Lone-Pairs: The exceptionally Large Optical Rotation of Norbornenone *J. Chem.*
31 *Theory Comput.* **2012**, *8*, 4336–4346.
32
- 33 [116] Caricato, M. Orbital Analysis of Molecular Optical Activity Based on Configuration Rota-
34 tory Strength *J. Chem. Theory Comput.* **2015**, *11*, 1349–1353.
35
- 36 [117] Caricato, M.; Vaccaro, P. H.; Crawford, T. D.; Wiberg, K. B.; Lahiri, P. Insights on the
37 Origin of the Unusually Large Specific Rotation of (1*S*,4*S*)-Norbornenone *J. Phys. Chem.*
38 *A* **2014**, *118*, 4863–4871.
39
- 40 [118] Kobayshi, M. Optical Rotatory Power and Circular Dichroism. III. Rotatory Dispersion of
41 D-[Coen₃]Br₃ *J. Chem. Soc. Jpn.* **1943**, *64*, 648–653.
42
- 43 [119] Mathieu, J.-P. Circular Dichroism, Valence Bonds, and Secondary Asymmetric Synthesis
44 *Ann. Phys.* **1944**, *19*, 335–354.
45
- 46 [120] Mason, S. F.; Peart, B. J. Crystal Circular Dichroism and Spin-Forbidden Optical Activity
47 of Tris(Diamine)Cobalt(III) Complexes *J. C. S. Dalton Trans.* **1977**, *0*, 937–941.
48
- 49 [121] Strickland, R. W.; Richardson, F. S. Optical Activity of Transition Metal Compounds. III.
50 Molecular Orbital Calculations on Six-Coordinate Complexes of Trigonal Symmetry *Inorg.*
51 *Chem.* **1973**, *12*, 1025–1036.
52
53
54
55
56
57
58
59
60

- 1
2
3
4 [122] Evans, R. S.; Schreiner, A. F.; Hauser, P. J. Natural Optical Activity of $\text{Co}(\text{en})_3^{3+}$ and
5 $\text{Cr}(\text{en})_3^{3+}$: Interpretations with Complete Operator Matrices *Inorg. Chem.* **1974**, *13*, 2185–
6 2192.
- 7
8 [123] Mason, S. F.; Seal, R. H. Complementation of the Crystal-Field for Dihedral Optical Ac-
9 tivity *J. C. S. Chem. Comm.* **1975**, *0*, 331–333.
- 10
11 [124] Mason, S. F.; Seal, R. H. The Optical Activity of Cobalt(III) Chelate Diamine Complexes
12 *Mol. Phys.* **1976**, *31*, 755–775.
- 13
14 [125] Moffit, W. Optical Rotatory Dispersion of Transition-Metal Complexes *J. Chem. Phys.*
15 **1956**, *25*, 1189–1198.
- 16
17 [126] Lehr, A. D. Interaction of Electromagnetic Radiation with Matter. I. Theory of Optical Ro-
18 tatory Power: Topic A. Trigonal Dihedral Compounds *J. Chem. Phys.* **1964**, *68*, 665–722.
- 19
20 [127] Karipides, A. G.; Piper, T. S. Optical Activity of Coordination Compounds. II. A Molecular
21 Orbital Model and an Analysis of Experimental Data for Complexes of Trigonal Symmetry
22 *J. Chem. Phys.* **1964**, *40*, 674–682.
- 23
24 [128] Richardson, F. S. The Optical Activity of Trigonal Distorted Cubic Systems *J. Phys.*
25 *Chem.* **1971**, *75*, 692–712.
- 26
27 [129] Baron, L. D. Electric Quadrupole Contributions to the Optical Activity of Crystalline Tran-
28 sition Metal Complexes *Mol. Phys.* **1971**, *21*, 241–246.
- 29
30 [130] Ernst, M. C.; Royer, D. J. Optical Activity in Tris Bidentate Cobalt(III) Complexes. An ab
31 initio Study *Inorg. Chem.* **1993**, *32*, 1226–1232.
- 32
33 [131] Jorge, F. E.; Autschbach, J.; Ziegler, T. On the Origin of Optical Activity in tris–diamine
34 complexes of Co(III) and Rh(III). A Simple Model based on Time-dependent Density Func-
35 tion Theory *J. Am. Chem. Soc.* **2005**, *127*, 975–985.
- 36
37 [132] Kuroda, R.; Saito, Y. Solid-State Circular Dichroism Spectra of Tris(diamine)cobalt(III)
38 Complexes: Decomposition in E and A_2 Components *Bull. Chem. Soc. Jpn.* **49**, 433–436.
- 39
40 [133] Richardson, F. S. The Optical Activity of Disymmetric Six-Coordinate Cobalt(III) Com-
41 plexes *Inorg. Chem.* **1972**, *11*, 2366–2378.
- 42
43 [134] Kamiński, M.; Cukras, J.; Pecul, M.; Rizzo, A.; Coriani, S. A Computational Protocol
44 for the Study of Circularly Polarized Phosphorescence and Circular Dichroism in Spin-
45 Forbidden Absorption *Phys. Chem. Chem. Phys.* **2015**, *17*, 19079–19086.
- 46
47 [135] Eliseeva, S. V.; Bünzli, J.-C. G. Lanthanide Luminescence for Functional Materials and
48 Bio-Sciences *Chem. Soc. Rev.* **2010**, *39*, 189–227.
- 49
50 [136] D'Aléo, A.; Picot, A.; Beeby, A.; Williams, J. A. G.; Le Guennic, B.; Andraud, C.;
51 Maury, O. Efficient Sensitization of Europium, Ytterbium, and Neodymium Functionalized
52 Tris-Dipicolinate Lanthanide Complexes Through Tunable Charge-Transfer Excited States
53 *Inorg. Chem.* **2008**, *47*, 10258–19268.
- 54
55
56
57
58
59
60

- 1
2
3
4 [137] Janicki, R.; Kedzierski, A.; Mondry, A. The First Example of *ab-initio* Calculations of
5 f-f Transitions for the Case of [Eu(DOTP)]⁵⁻ Complex - Experiment versus Theory *Phys.*
6 *Chem. Chem. Phys.* **2016**, *18*, 27808–27817.
7
- 8 [138] Freidzon, A. Y.; Kurbatov, I.; Vovna, V. I. Ab initio Calculation of Energy Levels of Triva-
9 lent Lanthanide Ions *Phys. Chem. Chem. Phys.* **2018**, *20*, 14564.
10
- 11 [139] Hatanaka, M.; Yabushita, S. Mechanisms of f-f Hypersensitive Transition Intensities of
12 Lanthanide Trihalide Molecules: A Spin-Orbit Configuration Interaction Study *Theor.*
13 *Chem. Acc.* **2014**, *133*, 1517.
14
- 15 [140] Hilmes, G. L.; Riehl, J. P. Circularly Polarized Luminescence from Racemic Lan-
16 thanide(III) Complexes with Achiral Ligands in Aqueous Solution using Circularly Po-
17 larized Excitation *Inorg. Chem.* **1986**, *25*, 2617–2622.
18
- 19 [141] Richardson, F. S. Terbium(III) and Europium(III) Ions as Luminescent Probes and Stains
20 for Biomolecular Systems *Chem. Rev.* **1982**, *82*, 541–552.
21
- 22 [142] Werts, M. H. V.; Jukes, R. T. F.; Verhoeven, J. W. The Emission Spectrum and the Radiative
23 Lifetime of Eu³⁺ in Luminescent Lanthanide Complexes *Phys. Chem. Chem. Phys.* **2002**,
24 *4*, 1542–1548.
25
- 26 [143] Binnemans, K. Interpretation of Europium(III) Spectra *Coord. Chem. Rev.* **2015**, *295*, 1–
27 45.
28
- 29 [144] Huskowska, E.; Gawryszewska, P.; Legendziewicz, J.; Maupin, C. L.; Riehl, J. The
30 Measurement of Circularly Polarized Luminescence from Racemic Lanthanide Complexes
31 Prepared in Sol-Gels *J. Alloys Compd.* **2000**, *303*, 325–330.
32
- 33 [145] Sokolnicki, J.; Legendziewicz, J.; Riehl, J. P. The Effect of Excited State Energy Transfer
34 on the Circularly Polarized Luminescence from Sol-Gels Containing Racemic Complexes
35 of Eu(III): Theory and Experiment *J. Phys. Chem. B* **2002**, *106*, 1508–1514.
36
- 37 [146] Sokolnicki, J.; Legendziewicz, J.; Muller, G.; Riehl, J. P. The Luminescence, Molec-
38 ular and Electronic Structure, and Excited State Energetics of Tris-Complexes of 4-
39 phenylethynyl-2,6-pyridinedicarboxylic Acid with Eu(III) and Tb(III) Prepared in Sol-Gel
40 *Opt. Mat.* **2005**, *27*, 1529–1536.
41
- 42 [147] Coruh, N.; Hilmes, G. L.; Riehl, J. P. Use of the Pfeiffer Effect to Probe the Optical
43 Activity of Europium(III) Complexes with 2,6-Pyridinedicarboxylate *Inorg. Chem.* **1988**,
44 *27*, 3647–3651.
45
- 46 [148] Knecht, S.; Keller, S.; Autschbach, J.; Reiher, M. A nonorthogonal state-interaction ap-
47 proach for matrix product state wave functions *J. Chem. Theory Comput.* **2016**, *12*, 5881–
48 5894.
49
- 50 [149] Keller, S. F.; Reiher, M. Determining Factors for the Accuracy of DMRG in Chemistry
51 *Chimia* **2014**, *68*, 200–203.
52
53
54
55
56
57
58
59
60

Table of Contents Graphics

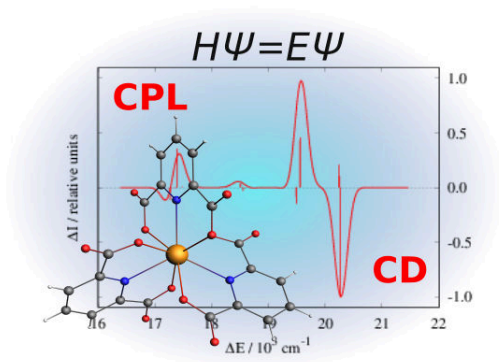


Table of Contents Synopsis

20
21
22
23
24
25
26
27

The absorption CD and emission CPL properties of a series of four bicyclic ketones, the Λ -[Co(en)₃]³⁺ complex, and of the Δ - and Λ -[Eu(DPA)₃]³⁻ enantiomers are calculated with the help of multi-reference wavefunction calculations including spin-orbit coupling that allow to treat both spin-allowed and spin-forbidden transitions.

Dedication

28
29
30
31
32
33
34
35
36
37
38
39
40
41
42
43
44
45
46
47
48
49
50
51
52
53
54
55
56
57

This article is dedicated to Dr. Jean-Paul Malrieu on the occasion of his 80th birthday.