



**HAL**  
open science

## Decreased integration of EEG source-space networks in disorders of consciousness

Jennifer Rizkallah, Jitka Annen, Julien Modolo, Olivia Gosseries, Pascal Benquet, Sepehr Mortaheb, Hassan Amoud, Helena Cassol, Ahmad Mheich, Aurore Thibaut, et al.

### ► To cite this version:

Jennifer Rizkallah, Jitka Annen, Julien Modolo, Olivia Gosseries, Pascal Benquet, et al.. Decreased integration of EEG source-space networks in disorders of consciousness. *Neuroimage-Clinical*, 2019, 23, pp.101841. 10.1016/j.nicl.2019.101841 . hal-02150189

**HAL Id: hal-02150189**

**<https://univ-rennes.hal.science/hal-02150189>**

Submitted on 10 Jul 2020

**HAL** is a multi-disciplinary open access archive for the deposit and dissemination of scientific research documents, whether they are published or not. The documents may come from teaching and research institutions in France or abroad, or from public or private research centers.

L'archive ouverte pluridisciplinaire **HAL**, est destinée au dépôt et à la diffusion de documents scientifiques de niveau recherche, publiés ou non, émanant des établissements d'enseignement et de recherche français ou étrangers, des laboratoires publics ou privés.



Distributed under a Creative Commons Attribution - NonCommercial - NoDerivatives 4.0 International License



## Decreased integration of EEG source-space networks in disorders of consciousness

Jennifer Rizkallah<sup>a,b</sup>, Jitka Annen<sup>c,d</sup>, Julien Modolo<sup>a,\*</sup>, Olivia Gosseries<sup>c,d</sup>, Pascal Benquet<sup>a</sup>, Sepehr Mortaheb<sup>c</sup>, Hassan Amoud<sup>b</sup>, Helena Cassol<sup>c,d</sup>, Ahmad Mheich<sup>a</sup>, Aurore Thibaut<sup>c,d</sup>, Camille Chatelle<sup>c,d</sup>, Mahmoud Hassan<sup>a</sup>, Rajanikant Panda<sup>c</sup>, Fabrice Wendling<sup>a,1</sup>, Steven Laureys<sup>c,d,1</sup>

<sup>a</sup> Univ Rennes, LTSI, F-35000 Rennes, France

<sup>b</sup> Azm Center for Research in Biotechnology and its Applications, EDST, Lebanese University, Lebanon

<sup>c</sup> GIGA Consciousness, University of Liège, Liège, Belgium

<sup>d</sup> Coma Science Group, University Hospital of Liège, Liège, Belgium

### ARTICLE INFO

#### Keywords:

Disorders of consciousness  
High-density electroencephalography  
Functional brain networks  
Unresponsive wakefulness syndrome  
Minimally conscious state

### ABSTRACT

Increasing evidence links disorders of consciousness (DOC) with disruptions in functional connectivity between distant brain areas. However, to which extent the balance of brain network segregation and integration is modified in DOC patients remains unclear. Using high-density electroencephalography (EEG), the objective of our study was to characterize the local and global topological changes of DOC patients' functional brain networks.

Resting state high-density-EEG data were collected and analyzed from 82 participants: 61 DOC patients recovering from coma with various levels of consciousness (EMCS ( $n = 6$ ), MCS+ ( $n = 29$ ), MCS- ( $n = 17$ ) and UWS ( $n = 9$ )), and 21 healthy subjects (i.e., controls). Functional brain networks in five different EEG frequency bands and the broadband signal were estimated using an EEG connectivity approach at the source level. Graph theory-based analyses were used to evaluate their relationship with decreasing levels of consciousness as well as group differences between healthy volunteers and DOC patient groups.

Results showed that networks in DOC patients are characterized by impaired global information processing (network integration) and increased local information processing (network segregation) as compared to controls. The large-scale functional brain networks had integration decreasing with lower level of consciousness.

### 1. Introduction

Severe brain damages may lead to various disorders of consciousness (DOC; (Giacino et al., 2014)). Emerging evidence associates DOC with alterations in functional and/or structural brain networks, mainly those sustaining arousal and awareness (Amico et al., 2017; Annen et al., 2016; Annen et al., 2018; Bodien et al., 2017; Boly et al., 2012; Fernández-Espejo et al., 2012; Owen et al., 2009). Therefore, network-based EEG methods enabling the identification of these pathological alterations in brain networks are valuable. More specifically, new 'neuromarkers' able to identify network characteristics associated with DOC could improve diagnosis and optimize patient-specific clinical follow-up. This is important, since DOC encompass a variety of consciousness states, such as the unresponsive wakefulness syndrome

(UWS; wakefulness with only reflex movements) (Laureys et al., 2010; Monti et al., 2010), the minimally conscious state (MCS, reproducible and purposeful behavior; divided in MCS- and MCS+, the latter characterized by the presence of response to command, intentional communication and/or intelligible verbalization) (Giacino et al., 2002), and emergence from the minimally conscious state (EMCS, characterized by recovered functional communication and/or object use) (Giacino et al., 2002).

These different clinical diagnoses are defined by functional boundaries as measured with behavior, preferably using the Coma Recovery Scale-Revised (CRS-R; (Giacino et al., 2004)). However, there is a transition zone between the different states that marks the recovery from UWS to MCS or higher awareness levels (Giacino et al., 2009; Schiff and Fins, 2016), emphasizing that DOC are not a static

\* Corresponding author.

E-mail address: [julien.modolo@inserm.fr](mailto:julien.modolo@inserm.fr) (J. Modolo).

<sup>1</sup> Equally contributed.

phenomenon but could be conceptualized as a continuum, with patients sometimes moving from UWS to MCS and back in a short time span. Indeed, diagnosis is most reliable in chronic patients after at least 5 behavioral assessments, accounting for arousal and awareness fluctuations (Wannez et al., 2017). Clinical diagnosis based on behavior is furthermore limited by misdiagnosis due to, for example, physical limitations such as spasticity, language impairments, and medical complications. UWS patients in which the neuroimaging shows results in line with the ability to sustain consciousness are not rare and may represent about 30% of the DOC population (Stender et al., 2014). This category of patients are termed non-behavioral MCS (MCS\*, (Gosseries et al., 2014) or Cognitive Motor Dissociation (CMD), (Schiff, 2015). Even though clinical diagnosis based on these functional boundaries is important for prognosis and treatment (e.g., (Thibaut et al., 2014)), overlapping cognitive function as measured with neuroimaging/neurophysiology between diagnostic entities is expected to some extent.

Electroencephalography (EEG) records cortical electrical activity from scalp electrodes, and has major assets due to its non-invasiveness, easiness-of-use and clinical accessibility. Previous EEG network-based studies in the context of DOC have been performed at the scalp level (Chennu et al., 2014; Chennu et al., 2017) with satisfactory accuracies in classifying UWS and MCS patients (Chennu et al., 2017; Engemann et al., 2018; Sitt et al., 2014). However, the biological interpretation of corresponding network alterations is not straightforward, since scalp EEG signals are corrupted by the volume conduction due to the head electrical conduction properties (Brunner et al., 2016; Van de Steen et al., 2016). Several studies have indeed reported the limitations of computing connectivity at the EEG scalp level (see for review (Hassan and Wendling, 2018; Schoffelen and Gross, 2009) even if this can be compensated by methods removing zero-lag components, (Chennu et al., 2017; Vinck et al., 2011). More essentially, scalp analysis does not allow making inferences about interacting brain regions. A potential solution is an emerging technique called “MEG/EEG source connectivity” (De Pasquale et al., 2010; Hassan et al., 2015; Hipp et al., 2012; Kabbara et al., 2017; Kabbara et al., 2018; Mehrkanoon et al., 2014; Mheich et al., 2017; Rizkallah et al., 2018), which reduces the aforementioned volume conduction. It is also conceptually attractive since networks can be directly identified at the cortical level with a high time/space resolution (for more details, see (Hassan and Wendling, 2018). Since conscious processing involves synchronization of locally generated oscillations between remote groups of neurons (Melloni et al., 2007), high-density EEG functional connectivity at the source level is a promising approach to track such synchronizations. In contrast, the time resolution of most fMRI techniques does not enable the detection of fast neural oscillations (e.g., 30–80 Hz range), which are involved in conscious perception and information transfer between regions (Fries, 2015), limiting the possibilities to study synchronization-based communication with fMRI.

Over the past decade, graph theory has become a well-established approach in the field of network neuroscience (Fornito et al., 2016). It provides complementary information to source connectivity methods by quantifying functional and/or statistical aspects of identified brain networks. Among the few studies using graph theory in DOC, a common finding is the identification of disturbances in overall network integration, usually computed by modularity-based approaches (Chennu et al., 2017; Crone et al., 2014; Demertzi et al., 2015). However, to what extent the balance between EEG frequency-dependent network segregation (local information processing) and integration (global information processing) is altered in DOC remains elusive, which is the main objective of this paper. More specifically, large-scale communication (integration) between brain regions appears to involve rather low-frequency oscillations such as the theta rhythm, while local information processing rather involves high-frequency oscillations such as the gamma rhythm (Lisman and Jensen, 2013) for a detailed review). Here, we tackle the issue of the integration/segregation balance and its relationship with low/high frequency neuronal oscillations in patients

with DOC. In this study, we combined EEG source connectivity with graph theory, applied to resting-state high-density-EEG (256 channels) data recorded from patients with DOC whose diagnosis has been established based on the Coma Recovery Scale-Revised (CRS-R; (Giacino et al., 2004)).

Our specific objectives were to i) track alterations in objective functional connectivity measures reflecting cortical brain networks as a function of clinical consciousness levels (ranging from patients diagnosed as unresponsive, through those who have emerged from minimally conscious and healthy control subjects) and ii) identify the brain regions that were differentially involved between groups by means of direct group comparisons.

## 2. Materials and methods

### 2.1. Participants

Sixty-one patients (24 females, mean age  $40 \pm 14.5$ ) and twenty-one healthy subjects (i.e. controls; 8 females, mean age  $41 \text{ years} \pm 15.4$ ) were included in this study. Patients were diagnosed as EMCS ( $n = 6$ ), MCS+ ( $n = 29$ ), MCS- ( $n = 17$ ) and UWS ( $n = 9$ ). Etiology was traumatic in 28 patients and non-traumatic in 33 patients. Time since injury was on average three years and ranged from nine days to 19 years. The Ethics Committee of the University Hospital of Liège approved this study. All healthy subjects and patients' legal surrogates gave informed written consent for participation to the study.

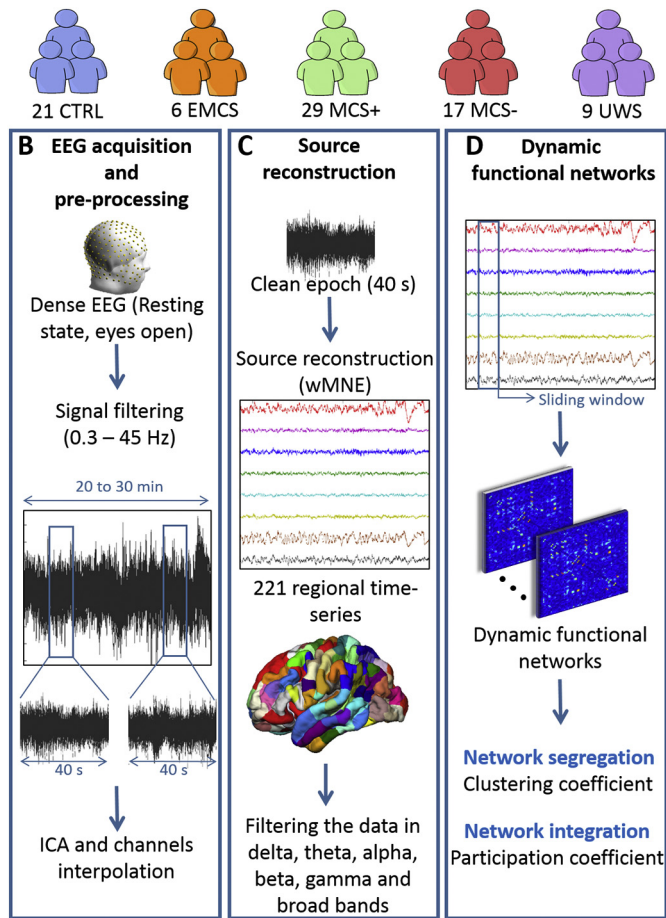
Patients' level of consciousness was assessed using the CRS-R (Giacino et al., 2004) repeated at least 5 times to minimize clinical misdiagnosis (Wannez et al., 2017). Patient's diagnosis was based on the best behaviors/highest item obtained over the repeated CRS-R assessments during the week of hospitalization. The following demographic information (listed in Supplementary Table T1) was also collected for each patient: age, gender, traumatic or non-traumatic etiologies and best clinical diagnosis based on the CRS-R assessments.

### 2.2. Data acquisition and preprocessing

The full pipeline of the analysis is described in Fig. 1. A high-density EEG system (EGI, Electrical Geodesic Inc., 256 electrodes applied with a saline solution) was used to record resting state brain activity with a sampling rate of either 250 Hz or 500 Hz (which were down-sampled to 250 Hz for consistency). During data collection, patients were awake and had their eyes open (an examiner was present during the whole acquisition to ensure that the patients remained awake and eyes open in a silent and dark room, tactile or auditory stimuli were administered if patients were closing their eyes).

EEG data from 178 channels on the scalp were retained for analysis; neck, forehead and cheeks channels were discarded, since they are the most prone to muscular artifacts, as previously described (Hassan et al., 2016; Kabbara et al., 2017). EEG signals were filtered between 0.3 and 45 Hz and then re-referenced using the average reference (Tadel et al., 2011). Overall, out of 115 patients' recordings, we retained 61 datasets for further processing and analysis. The other recordings were excluded due to excessive contamination by artifacts (e.g., muscle artifacts).

All EEG epochs were visually inspected before Independent Components Analysis (ICA) was performed to remove eye blinking artifacts using EEGLAB (Delorme and Makeig, 2004). Electrodes with poor signal quality were interpolated in Brainstorm using signals recorded by surrounding electrodes (spherical spline interpolating method, with a maximal distance between neighbors of 5 cm). Segments that have > 20 electrodes interpolated have been excluded from the analysis. The MRI template “Colin27” (Holmes et al., 1998) and EEG signals were co-registered through identification of the same anatomical landmarks (left and right tragus and nasion) using Brainstorm (without digitalizing the electrodes). The lead field matrix was then computed for a cortical mesh of 15,000 vertices using openMEEG



**Fig. 1.** Data processing pipeline. (A) Database: Patients were diagnosed according to repeated assessments with the CRS-R into EMCS, MCS+, MCS- and UWS. The demographic details are listed in Supplementary Table T1. (B) EEG acquisition and preprocessing: High-density-EEGs were recorded using 256 electrodes during resting-state (eyes open, in the dark) for 20 to 30 min. Signals were then filtered between 0.3 and 45 Hz and segmented into 40 s epochs. Independent Component Analysis (ICA) was applied and bad channels were interpolated. Finally, the first five clean epochs were kept for analysis. (C) Source reconstruction: EEG cortical sources were estimated using the weighted norm estimation method (wMNE). This step was followed by a projection of the source signals on an atlas based on Desikan-killiany and Hagmann atlases, using a template brain. Reconstructed regional time series were filtered in six different frequency bands: Delta (1–3 Hz), Theta (3–7 Hz), Alpha (7–13 Hz), Beta (14–25 Hz), Gamma (30–45 Hz) and Broadband (1–45 Hz). (D) Dynamic functional networks: Functional connectivity matrices were computed using the phase locking value (PLV) calculated using a sliding window technique. Networks were then characterized by their clustering coefficient (segregation) and participation coefficient (integration).

(Gramfort et al., 2010). The noise covariance matrix was calculated using a long segment of noisy EEG data at rest, as recommended in (Tadel et al., 2011). An atlas-based segmentation approach was used to project EEGs onto an anatomical framework consisting of 221 cortical regions identified by means of re-segmenting the Desikan-Killiany (Desikan et al., 2006) atlas using Freesurfer (Fischl, 2012). Time series within one region of interest were averaged after flipping the sign of sources with negative potentials.

### 2.3. Brain networks construction

Functional brain networks were constructed using the “high-density-EEG source connectivity” method (Hassan et al., 2014) which quantifies the functional connectivity between regional time series at

the source level. The EEG source connectivity method aims to bridge functional network at the level of cortical sources and the recorded scalp EEG signals, which involves solving an inverse problem (from the EEG to the sources). This is an ill-posed problem since we have a number of electrodes that is greatly inferior to the number of possible sources. Therefore, several physical (position and orientation of the sources) mathematical (amplitude) constraints have to be formulated to solve the inverse problem. Here, regarding the position of the sources, we used a segmented MRI image (template brain available in Brainstorm package), with the position of each source being a vertex on the brain mesh. Regarding the orientation of the sources, it was set as normal to the cortical surface for each vertex, which is plausible since the origin of EEG signals occurs from post-synaptic currents at the level of pyramidal cells, and that pyramidal cells are aligned “en palissade” and are normal to the cortical surface. In terms of mathematical constraints, we used the weighted minimum norm estimate (wMNE), which aims to identify sources with the smallest energy. For further details, see (Hassan and Wendling, 2018).

The EEG source connectivity method includes two main steps: i) reconstruction of the cortical regions (brain sources) temporal dynamics from the scalp EEG signals and ii) measurement of the functional connectivity between reconstructed regional time series. wMNE was used to reconstruct the cortical sources by introducing a weighting matrix:

$$\hat{S}_{wMNE} = (G^T W_X G + \lambda I)^{-1} G^T W_X X$$

where the diagonal matrix  $W_X$  is built from the lead field matrix  $G$  with non-zero terms inversely proportional to the norm of the lead field vectors. The regularization parameter  $\lambda$  is computed relatively to the signal to noise ratio ( $\lambda = 0.1$  in our analysis). Reconstructed regional time series were filtered in six different frequency bands: Delta (1–3 Hz), Theta (3–7 Hz), Alpha (7–13 Hz), Beta (14–25 Hz), Gamma (30–45 Hz) and broadband (1–45 Hz). Then, we computed the functional connectivity between the reconstructed regional time series in each frequency band, using the phase locking value (PLV) (Lachaux et al., 1999) defined as:

$$PLV(t) = \left| \frac{1}{\delta} \int_{t-\delta/2}^{t+\delta/2} e^{j(\varphi_y(t) - \varphi_x(t))} d\tau \right|$$

where  $\varphi_y(t)$  and  $\varphi_x(t)$  are the phases of the signals  $x$  and  $y$  at time  $t$  extracted using the Hilbert transform.  $\delta$  denotes the size of the window in which PLV is calculated. PLV values range between 0 (no phase locking) and 1 (full synchrony). Detailed methodological description and technical details of the high-density EEG source connectivity method as computed in this paper can be found in (Hassan et al., 2015).

We used a sliding window technique for each epoch to compute the dynamic functional connectivity matrices. The smallest window length recommended by (Lachaux et al., 2000) was used, equal to  $\frac{\text{number of cycles}}{\text{central frequency}}$  where the number of cycles at the given frequency band is equal to six. Finally, we adopted a 10% (of the highest PLV values) threshold to retain only the ‘true’ functional connections, and remaining PLV values were set to zero.

### 2.4. Multi-slice networks modularity

Thresholded weighted connectivity matrices were split into time-varying modules using multi-slice networks modularity (Bassett et al., 2013; Mucha et al., 2010). This algorithm consists of linking nodes across network slices (time windows) via a coupling parameter before applying the modularity maximization method (Bassett et al., 2011; Bassett et al., 2015): each node is only connected to itself in the adjacent layers. This produces, for every brain region at every time window, a modular assignment reflecting the module allegiance.

Due to a degeneracy problem in the modularity algorithms (Good et al., 2010), i.e. running the same algorithm on the same connectivity



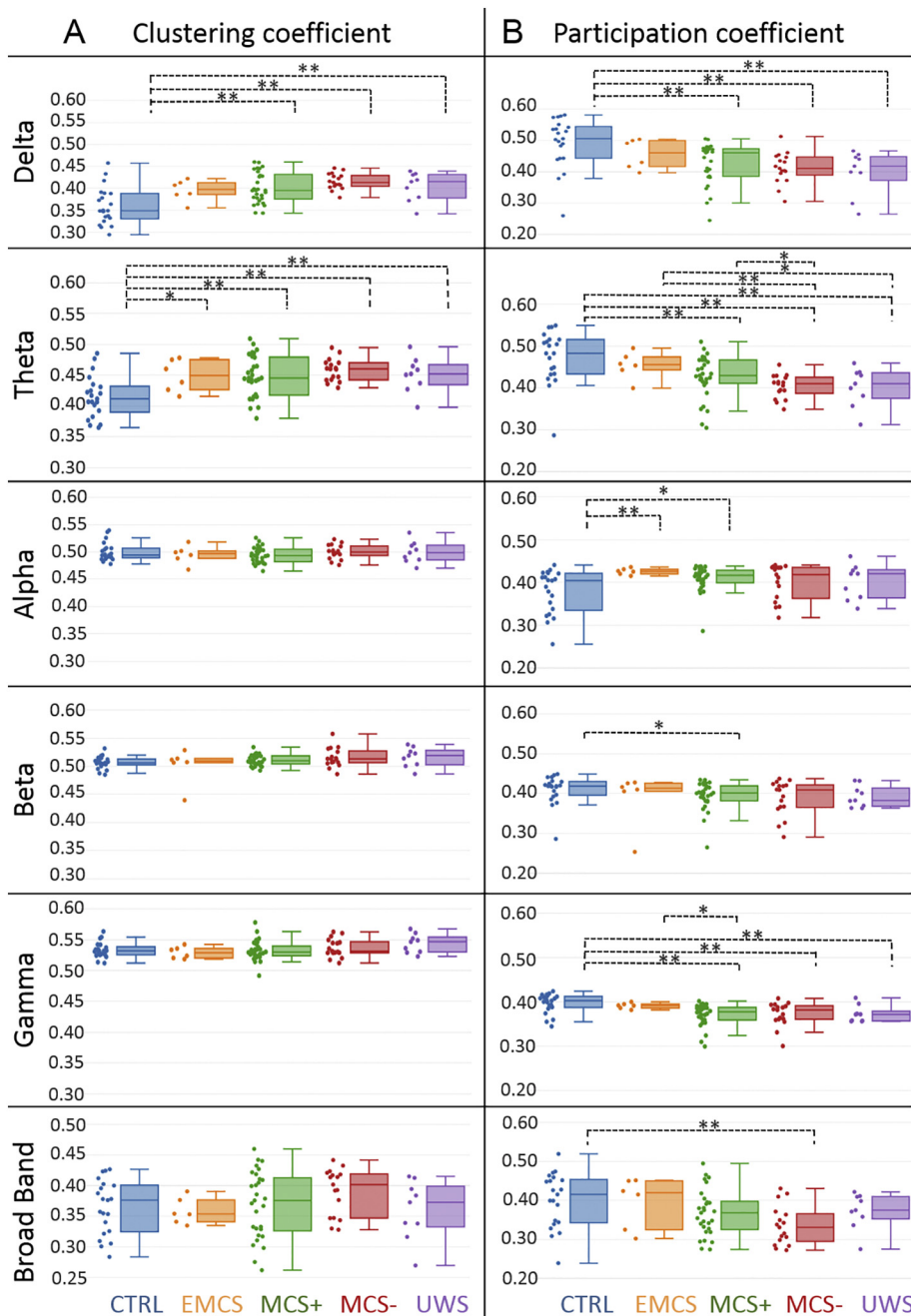


Fig. 2. Brain segregation and integration in control subjects and patients with decreasing levels of consciousness due to severe brain injury. A. The clustering (segregation) and B. participation (integration) coefficients are presented for all groups in delta (1–3 Hz), theta (3–7 Hz), alpha (7–13 Hz), beta (14–25 Hz), gamma (30–45 Hz) and broad band (3–45 Hz). Values were averaged over all brain regions. Individual patient metrics are shown in the scatter plot next to the box plot. Increase of clustering coefficient values and decrease of participation coefficient values with decreased consciousness level was found within all frequency bands. A Wilcoxon test was applied between groups. \* denotes  $p < .05$  without correction and \*\* with correction.

matrix can result in slightly different outputs, the multilayer network modularity was computed 100 times and a 221 by 221 association matrix was generated (Bassett et al., 2013; Fornito et al., 2016; Lancichinetti and Fortunato, 2012). The association matrix elements indicate the number of times each node was assigned to the same module with the other nodes across these 100 partitions. The association matrix was then compared to a null-model generated from 100 random permutation from the originals partitions, and only significant values ( $p < .05$ ) were kept (Bassett et al., 2011). Finally, the Louvain algorithm (Blondel et al., 2008) was applied on the association matrix to cluster the network, resulting in a partition that is the most representative of network modularity.

### 2.5. Network measures

Our main intent was to explore two important properties related to

information processing in the human brain network:

- *Network segregation*, which reflects local information processing. For this reason, the clustering coefficient ‘C’ was computed and considered as a direct measure of network segregation (Bullmore and Sporns, 2009). In brief, C represents how close a node’s neighbors tend to cluster together (Watts and Strogatz, 1998).

$$C_i = \frac{2t_i}{k_i(k_i - 1)}$$

where  $t_i$  denotes the number of triangles around the node  $i$  and  $k_i$  represents the number of edges connected to the node  $i$ . This coefficient is the proportion of connections among a node’s neighbors, divided by the number of connections that could possibly exist between them, which is 0 if no connections exist and 1 if all neighbors are connected. The average clustering coefficient of a network was calculated for each epoch by averaging the clustering coefficient values over all the 221

regions.

- *Network integration*, which reflects global information processing. The participation coefficient was computed to measure the diversity of a node inter-modular connections (Guimerà and Amaral, 2005).

$$P_i = 1 - \sum_{s=1}^{N_m} \left( \frac{k_{is}}{k_i} \right)^2$$

where  $N_m$  is the number of modules,  $k_{is}$  is the number of edges between node  $i$  and other nodes in module  $s$ , and  $k_i$  is the total degree of node  $i$ . The participation coefficient of a node is close to 1 if its links are uniformly distributed among all the modules and 0 if all of its links are within its own module. Nodes with high participation coefficients interconnect multiple modules together, and hence can be seen connectivity hubs. The average participation coefficient of a network is calculated for each epoch by averaging the participation coefficient values over all 221 regions.

## 2.6. Statistical analysis

The Jonckheere-Terpstra (JT) test (Jonckheere, 1954; Terpstra, 1952), a non-parametric and rank-based trend test, was used to test the trends of network metrics as a function of the continuum of clinical levels of consciousness. Regional-level differences were analyzed between the groups, with the exception of the EMCS group due to its very small sample size ( $N = 6$ ).

To statistically assess whether group differences between brain integration and segregation and clinical levels of consciousness exist (healthy volunteers versus all patient groups and between patient groups) we used the Mann-Whitney  $U$  Test. In order to address the family-wise error rate, statistical tests were corrected for multiple comparisons using the Bonferroni method. In the global-wise analysis,  $p_{\text{bonf}} = 0.05/N_g$ , where  $N_g = 5$  denotes the number of groups. In the region-wise analysis,  $p_{\text{bonf}} = 0.05/N_r$ , where  $N_r = 221$  denotes the number of regions of interest.

*Data availability.* The data used in the present study is available upon reasonable request.

## 3. Results

There were no differences between patients and controls in terms of gender ( $p = .6$ ) or age ( $p = .2$ ) and between patient groups for time since injury ( $p = .12$ ).

### 3.1. Network segregation/integration as a function of clinical levels of consciousness

The results in Fig. 2A illustrate a trend towards increased clustering coefficient values with decreased consciousness level in the delta (JT trend statistic = 4.2,  $p < .0001$ ), theta (JT trend statistic = 3.67,  $p = .0001$ ), beta (JT trend statistic = 2.24,  $p = .01$ ) and gamma (JT trend statistic = 1.66,  $p = .04$ ) bands. In the delta band, controls had lower clustering coefficients than patients in MCS+ ( $p = .0007$ ,  $U = 133$ ,  $r = 0.47$ , corrected), MCS- ( $p < .0001$ ,  $U = 43$ ,  $r = 0.62$ , corrected) and UWS ( $p = .01$ ,  $U = 39$ ,  $r = 0.485$  corrected). In the theta band, the clustering coefficient was also lower in controls as compared to MCS+ ( $p = .001$ ,  $U = 146$ ,  $r = 0.43$ , corrected), MCS- ( $p = .0001$ ,  $U = 47$ ,  $r = 0.62$ , corrected) and UWS ( $p = .01$ ,  $U = 38$ ,  $r = 0.46$ , corrected).

The results in Fig. 2B illustrate decreased participation coefficient values with decreased consciousness level in the delta (JT trend statistic = 4.5,  $p < .0001$ ), theta (JT trend statistic = 4.9,  $p < .0001$ ), beta (JT trend statistic = 2.2,  $p = .01$ ), gamma (JT trend statistic = 3.9,  $p < .0001$ ) and broad bands (JT trend statistic = 2.7,  $p = .0034$ ). In the delta band, the participation coefficient was higher

in controls as compared to MCS+ ( $p = .0005$ ,  $U = 480$ ,  $r = 0.48$ , corrected), MCS- ( $p = .0007$ ,  $U = 294$ ,  $r = 0.54$ , corrected) and UWS ( $p = .005$ ,  $U = 156$ ,  $r = 0.5$  corrected).

In the theta band, the participation coefficient was higher in controls as compared to MCS+ ( $p = .003$ ,  $U = 457$ ,  $r = 0.42$ , corrected), MCS- ( $p < .0001$ ,  $U = 317$ ,  $r = 0.65$ , corrected), and UWS ( $p = .003$ ,  $U = 159$ ,  $r = 0.52$ , corrected). The participation coefficient in the theta band was also higher in EMCS as compared to MCS- ( $p = .007$ ,  $U = 90$ ,  $r = 0.56$ , corrected).

In the alpha band, the participation coefficient showed lower values in controls than in EMCS ( $p = .009$ ,  $U = 18$ ,  $r = 0.49$ , corrected). However, in the gamma band, the participation coefficient showed a decrease in MCS+ patients ( $p = .0002$ ,  $U = 492$ ,  $r = 0.52$ , corrected), MCS- patients ( $p = .002$ ,  $U = 282$ ,  $r = 0.49$ , corrected), and UWS patients ( $p = .01$ ,  $U = 150$ ,  $r = 0.45$ , corrected) as compared to controls. Additionally, we performed the JT tests excluding the controls to confirm that our results were not solely driven by this group, and all trends remained significant in theta, delta and gamma bands.

### 3.2. Regional-wise differences between groups

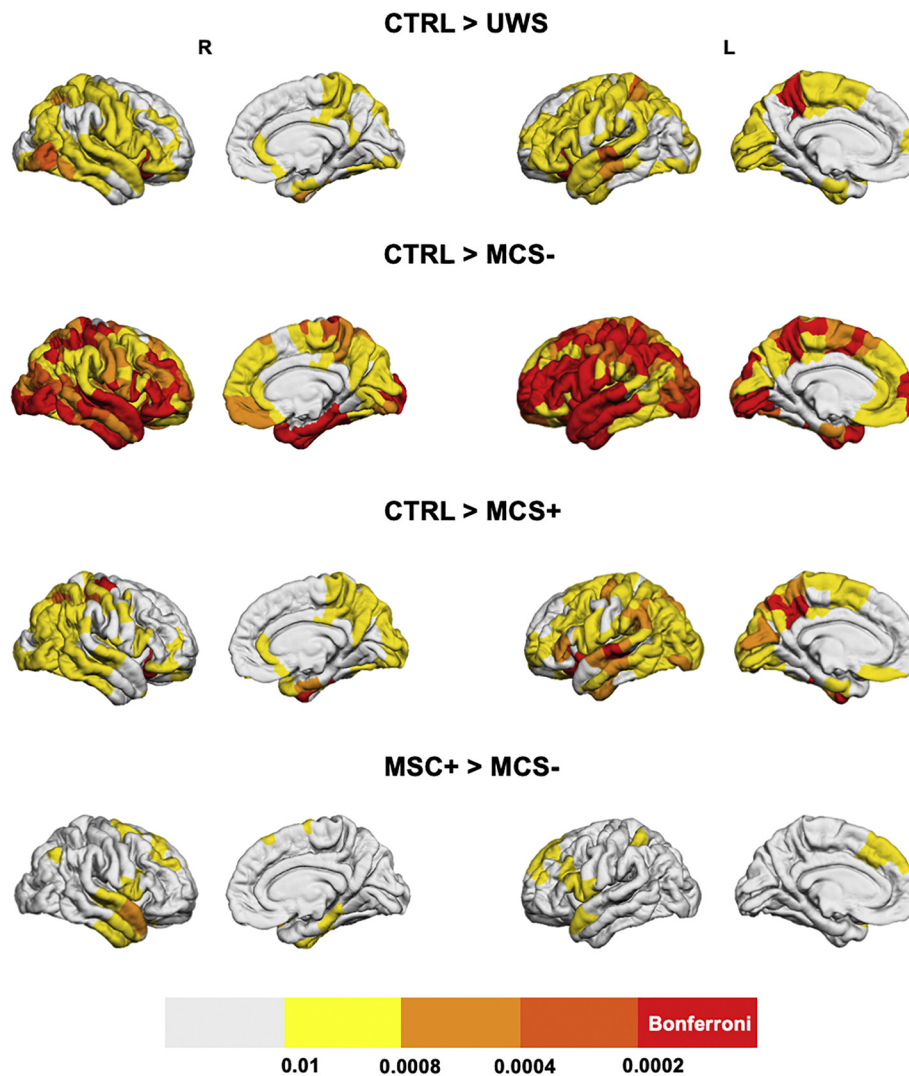
We present below results for the participation coefficient in the theta (Fig. 3) and gamma (Fig. 4) bands.

All patient groups had brain regions with significantly (Bonferroni-corrected) decreased integration as compared to the control group and no regions with higher integration values were identified. As expected, a wider network was involved in the decreased integration in MCS-patients than in MCS+ patients, as compared to the controls. However, the differences between the control group and the UWS group were much less pronounced than between the control group and the MCS-group, which might originate from the small sample size of the UWS group ( $N = 9$ ). Regions that resisted the Bonferroni correction were mainly located in the left precuneus and left/right orbitofrontal area for the comparison of controls > UWS ( $p < .0002$ ). A large number of brain regions had decreased integration in the MCS- group as compared to the control group (exhaustive list in Supplementary Material), including the right orbitofrontal ( $p < .0002$ ), left inferior temporal ( $p < .0002$ ) and left superior parietal ( $p < .0002$ ). The left precuneus, left/right orbitofrontal, left/right fusiform, left superior temporal, right precentral ( $p < .0002$ ) showed a higher participation coefficient in the theta band for controls than MCS+ patients.

The results regarding the participation coefficient for the reconstructed functional networks in the gamma band are presented in Fig. 4. No significant differences were observed between patient groups. The comparison between control and MCS- groups revealed a decrease in participation coefficient in MCS- patients mainly in the left fusiform, left postcentral and right dorso-lateral frontal cortex ( $p < .0002$ ). A much wider network of regions had a decreased participation coefficient between control and MCS+ groups, mainly located in the left/right lateral frontal cortex and right central cortex ( $p < .0002$ ). Again, as in the case of the theta band, the UWS group had a lower number of regions with decreased integration than MCS groups, as compared to the control group. The exact labels of the regions with a significant difference in the participation coefficient (in theta and gamma bands), along with Bonferroni corrections, are available in the Supplementary Materials Tables T2 and T3.

## 4. Discussion

Emerging evidence supports that DOC are characterized by disruptions of brain networks that sustain arousal and awareness, as reviewed by (Bodien et al., 2017). Therefore, identifying alterations in whole-brain functional networks from non-invasive techniques, along with their relationships with varying consciousness levels, is a crucial and challenging issue. In this study, based on scalp high-density EEG recordings, we identified alterations in resting-state functional networks



**Fig. 3.** Between-group comparison of regional decreases in theta band integration. Brain regions that have significantly lower integration in UWS, MCS- and MCS + as compared to the control group and in MCS- patients compared to MCS + patients are presented. Brain regions having a p-value lower than  $0.05/221 = 0.0002$  (Bonferroni-corrected) are presented in the red color, regions with  $0.0002 < p < .0004$  are presented in dark orange, if  $0.0004 < p < .0008$  the light orange color was used, for  $0.0008 < p < .01$  the yellow color was used and if  $p > .01$  the regions are presented in white.

associated with DOC. Interestingly, a gradual reconfiguration of functional brain networks was observed in line with the consciousness level. Our findings also pointed at a decrease in brain network integration (communication between distant brain modules) and an increase in brain network segregation (communication within the same brain module) in DOC patients as compared to healthy controls. A decrease in brain integration with decreasing consciousness is especially relevant from a fundamental point of view. Indeed, one of the most prevalent theories, namely the Integrated Information Theory (IIT), describes the generation of conscious experiences as a result of a sufficiently complex integration of information between brain regions (Tononi, 2004; Tononi et al., 2016).

Although using EEG to identify markers in DOC is not novel in itself. The originality of the present work is that, as opposed to most previous studies, functional brain networks were estimated at the cortical level using high-density EEG data, which enabled making inferences about interacting regions. For example, we explored alterations of functional brain networks in two key aspects of human brain information processing: segregation and integration. These findings indicate that functional connectivity between distant areas (network integration) decreases with decreased level of consciousness.

#### 4.1. Low network integration in DOC patients

The main finding of the present study is a decreasing trend in the integration of resting-state functional brain networks with the consciousness level. This finding is consistent with the conclusions from several studies (Chennu et al., 2017; Crone et al., 2014), including those investigating transcranial magnetic stimulation (TMS)-evoked EEG responses in patients with DOC (Casali et al., 2013; Casarotto et al., 2016). An important contribution of the present study is that, as opposed to complexity-based indexes computing using TMS-evoked responses, the computation of integration is based only on resting-state functional networks. It does not require any brain stimulation hardware, which could have a potential clinical and practical value, even if in this study we were not able to identify a difference between MCS and UWS groups.

Two common anatomical regions were identified with decreased integration when comparing the control group with any of the patient groups. The first is the left precuneus, a key hub structure from the default mode network (DMN). The precuneus is engaged in self-related processing (Zhang and Chiang-shan, 2012), episodic memory (Ren et al., 2018), awareness and conscious information processing (Kjaer et al., 2001; Long et al., 2016; Vogt and Laureys, 2005). Also, it has



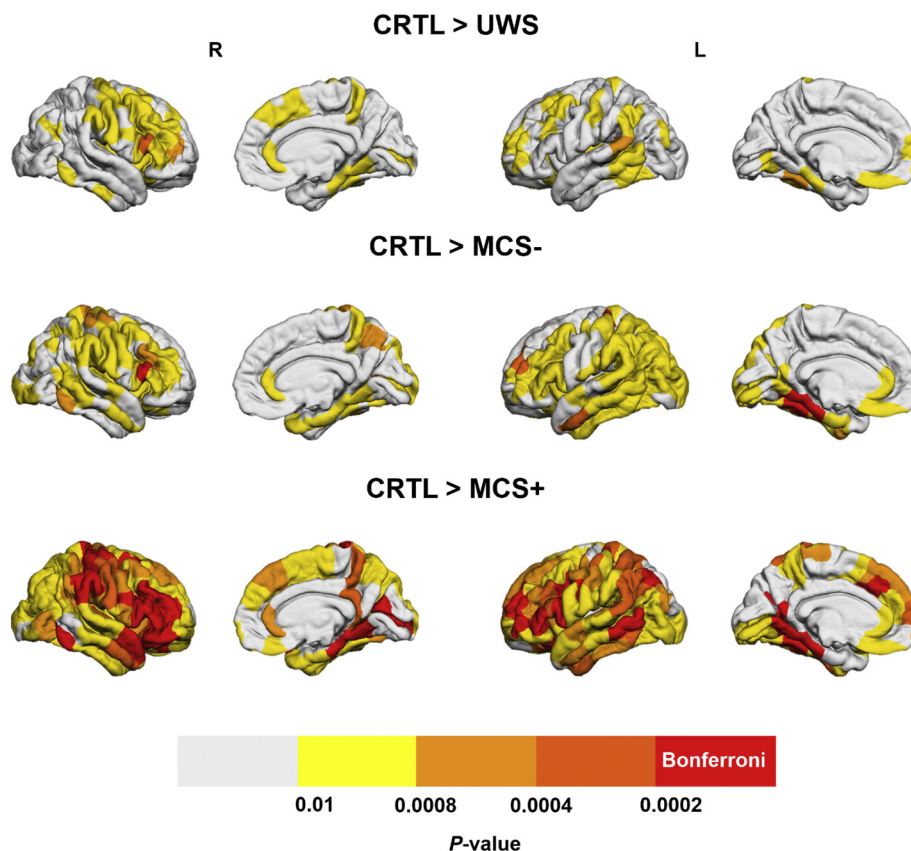


Fig. 4. Between-group comparison of regional decreases in gamma band integration. Brain regions that have significantly lower integration in UWS, MCS- and MCS+ as compared to the control group are presented. Brain regions having a  $p$ -value lower than  $0.05/221 = 0.0002$  (Bonferroni-corrected) are presented in the red color, regions with  $0.0002 < p < .0004$  are presented in dark orange, if  $0.0004 < p < .0008$  the light orange color was used, for  $0.0008 < p < .01$  the yellow color was used and if  $p > .01$  the regions are presented in white. (For interpretation of the references to color in this figure legend, the reader is referred to the web version of this article.)

been shown that patients with UWS having residual functional connectivity of DMN and external awareness networks might be misdiagnosed, since such functional connectivity is an indicator of covert consciousness (Naro et al., 2017). Second a part of the left orbitofrontal cortex is affected, this region is believed to encode predicted values of potential rewards (Gottfried et al., 2003). It is also thought to play a major role in the evaluation of specific behavioral outcomes to influence action selection, depending on emotional and sensory contexts (Rudebeck and Murray, 2014) and in pain perception (Naro et al., 2015). As mentioned previously, the network of regions with decreased integration in the theta band is wider in MCS- patients than in MCS+ patients, which is consistent with their respective clinical CRS-R diagnosis. It remains unclear why the UWS group had fewer involved brain regions with decreased integration when compared to controls than the MCS+ and MCS- groups.

Two main factors may explain the absence of group differences between UWS and MCS patients. First, the limited sample size ( $N = 9$ ) of the UWS group, which decreases statistical power for the group comparison, especially given the high heterogeneity in DOC patients' structural and functional brain lesions. Second, clinical diagnoses might represent overlapping brain functioning (Schiff and Fins, 2016). In line with this notion, previous studies identifying functional and structural differences between patient groups have sometimes failed to identify group differences between UWS and MCS, but found a difference between DOC and healthy controls' groups (e.g., (Demertzi et al., 2014; Di Perri et al., 2016)). The identification of group differences still remains a key objective for clinical applications and should be addressed in larger multicenter studies.

Regarding the increased network segregation, results were less pronounced between groups as compared to network integration. This could explain discrepancies between previous studies, some referring to an increase in network segregation (using the clustering coefficient for instance) (Chennu et al., 2014), while others reported the opposite (Chennu et al., 2017). It is worth mentioning that, in our study and the

one conducted by (Chennu et al., 2017), segregation results have opposite trends. A possible explanation is that the study by (Chennu et al., 2017) performed functional connectivity in the electrode space, while the present study functional connectivity was computed in the source space. The relationship between scalp versus source space functional connectivity using EEG is indeed still an open question in the EEG community. A recent study that compared scalp- and source- reconstructed networks concluded that, not only the magnitude of network measures may change from scalp to source (EEG) analysis, but even the direction of the effect may be the opposite (still depending on the functional connectivity metric) between both methods (Lai et al., 2018). Therefore, even if further efforts need to be made in the comparison between source- and scalp- EEG-based networks, such discrepancies can be explained by the method of network reconstruction.

#### 4.2. Methodological considerations and limitations

In this study, a proportional threshold of 10% was used to eliminate spurious connections from connectivity matrices. We chose using a proportional threshold instead of an absolute threshold to warrant equal density between groups, as recommended by (van den Heuvel et al., 2017). Moreover, Garisson et al. (Garrison et al., 2015) reported that network measures are stable across proportional thresholds, as opposed to absolute thresholds. A variety of thresholding methods are available, but no method is free of bias, it is therefore recommended to perform studies across different values of thresholds to ensure that findings are robust against this methodological factor. Therefore, we tested several threshold values, which did not have any impact on the main conclusions of the study, as illustrated in Supplementary Figs. S1 and S2.

Second, the muscle artifact in the gamma band is a serious methodological issue. Here, we have reduced the effect of the muscle artifacts by selecting only 178 channels for analysis (neck, forehead and cheeks channels were discarded, since they are the most prone to muscular



artifacts). Data with excessive movement artifact were removed by interpolating abnormally noisy channels and removing epochs with > 20 interpolated electrodes.

Third, the choice of wMNE/PLV was supported by two comparative analyses performed in (Hassan et al., 2014; Hassan et al., 2016) that reported the superiority of wMNE/PLV over other combinations of five inverse algorithms and five connectivity measures. Briefly, in (Hassan et al., 2016), the network identified by each inverse/connectivity combination used to identify cortical brain networks from scalp EEG was compared to a simulated network (ground truth). The combination that showed the highest similarity between the scalp-EEG-based network and reference network (using a network similarity algorithm) was considered as the optimal combination, which was found to be wMNE/PLV.

A persistent problem in the field of MEG/EEG source functional connectivity is the volume conduction effect (Brookes et al., 2012). Source level connectivity analysis has been shown to diminish the volume conduction problem, since connectivity metrics are estimated between 'local' regional time-series. However, these 'mixing effects' can also arise in the cortical source space, and ghost couplings can be produced by some connectivity methods when applied to mixed signals. To tackle this issue, a number of methods were developed mainly centered on the zero-lag correlation rejection. Un-mixing methods, called 'leakage correction', have been reported to force the reconstructed signals to have zero cross-correlation at lag zero (Colclough et al., 2015). Although handling this problem -theoretically- improves interpretation, a recent study showed that the estimated connectivity can be false and significantly different from the true connectivity (Palva et al., 2018; Pascual-Marqui et al., 2017).

In the present study, a template source space was used, instead of a subject-specific one. This might be problematic in severely brain-injured patients, since different brain regions are injured between patients. In the case of healthy subjects, (Douw et al., 2018) found that co-registration with a template brain yielded largely consistent connectivity and network estimates as compared to native MRI. However, in the case of severe brain damage, it remains unknown how a template instead of a native MRI co-registration affects results and their interpretability.

Although the significant trends in network integration decrease with the level of consciousness, the current approach failed to identify a significant difference, at the group level, between MCS and UWS groups. This absence of difference represents, at this stage, a limitation in terms of potential clinical translation. That being said, this represents a challenge and an opportunity to develop further EEG network-based markers of the consciousness level based solely on resting-state recordings, to improve the diagnosis of DOC patients using a limited and accessible hardware.

### Competing interests

The authors have no competing financial interests to declare.

### Declaration of authorship

Conceptualization: PB, MH, FW, SL. Data curation: JA, OG, SM, HC, AT, CC, RP, SL. Formal analysis: JR, JM, PB, MH, FW. Funding acquisition: FW, SL. Investigation: JR, JA, OG, JM, PB, MH. Methodology: JA, PB, MH, FW, SL. Project administration: FW, SL. Resources: FW, SL. Software: JR, MH. Supervision: FW, SL. Validation: FW, SL. Visualization: JR, JA, JM, MH. Writing (original draft): JR. Writing (review and editing): JR, JA, JM, OG, PB, SM, HA, HC, AM, AT, CC, MH, RP, FW, SL.

### Acknowledgements

This study was supported by the Future Emerging Technologies

(H2020-FETOPEN-2014-2015-RIA under agreement No. 686764) as part of the European Union's Horizon 2020 research and training program 2014–2018; the University and University Hospital of Liège; the Belgian National Funds for Scientific Research (FRS-FNRS); the Human Brain Project (EU-H2020-fetflagship-hbp-sga1-ga720270); the French Speaking Community Concerted Research Action (ARC - 06/11 - 340); NSERC discovery grant, IAP research network P7/06 of the Belgian Government (Belgian Science Policy); the European Commission; the James McDonnell Foundation; Mind Science Foundation; the BIAL foundation; the European space agency (ESA); the Public Utility Foundation 'Université Européenne du Travail'. JR is a PhD student with a fellowship from the AZM and SAADE Association, Tripoli, Lebanon. OG is postdoctoral researcher at FRS-FNRS. OG is post-doctoral fellow, and SL is research director at the F.R.S.-FNRS. CC is a post-doctoral Marie Skłodowska-Curie fellow (H2020-MSCA-IF-2016-ADOC-752686).

### Appendix A. Supplementary data

Supplementary data to this article can be found online at <https://doi.org/10.1016/j.nicl.2019.101841>.

### References

- Amico, E., et al., 2017. Mapping the functional connectome traits of levels of consciousness. *NeuroImage* 148, 201–211.
- Annen, J., et al., 2016. Function–structure connectivity in patients with severe brain injury as measured by MRI-DWI and FDG-PET. *Hum. Brain Mapp.* 37, 3707–3720.
- Annen, J., et al., 2018. Regional brain volumetry and brain function in severely brain-injured patients. *Ann. Neurol.* 83, 842–853.
- Bassett, D.S., et al., 2011. Dynamic reconfiguration of human brain networks during learning. *Proc. Natl. Acad. Sci.* 108, 7641–7646.
- Bassett, D.S., et al., 2013. Robust detection of dynamic community structure in networks. *Chaos: Interdisc. J. Nonlinear Sci.* 23, 013142.
- Bassett, D.S., et al., 2015. Learning-induced autonomy of sensorimotor systems. *Nat. Neurosci.* 18, 744–751.
- Blondel, V.D., et al., 2008. Fast unfolding of communities in large networks. *J. Stat. Mech.: Theory Exp.* 2008 P10008.
- Bodien, Y.G., Chatelle, C., Edlow, B.L., 2017. Functional networks in disorders of consciousness. In: *Seminars in Neurology*. vol. 37. Thieme Medical Publishers, pp. 485–502.
- Boly, M., et al., 2012. Brain connectivity in disorders of consciousness. *Brain Connectivity* 2, 1–10.
- Brookes, M.J., Woolrich, M.W., Barnes, G.R., 2012. Measuring functional connectivity in MEG: a multivariate approach insensitive to linear source leakage. *Neuroimage* 63, 910–920.
- Brunner, C., et al., 2016. Volume conduction influences scalp-based connectivity estimates. *Front. Comput. Neurosci.* 10.
- Bullmore, E., Sporns, O., 2009. Complex brain networks: graph theoretical analysis of structural and functional systems. *Nat. Rev. Neurosci.* 10, 186–198.
- Casali, A.G., et al., 2013. A theoretically based index of consciousness independent of sensory processing and behavior. *Sci. Transl. Med.* 5, 198ra105.
- Casarotto, S., et al., 2016. Stratification of unresponsive patients by an independently validated index of brain complexity. *Ann. Neurol.* 80, 718–729.
- Chennu, S., et al., 2014. Spectral signatures of reorganised brain networks in disorders of consciousness. *PLoS Comput. Biol.* 10, e1003887.
- Chennu, S., et al., 2017. Brain networks predict metabolism, diagnosis and prognosis at the bedside in disorders of consciousness. *Brain* 140, 2120–2132.
- Colclough, G.L., et al., 2015. A symmetric multivariate leakage correction for MEG connectomes. *NeuroImage* 117, 439–448.
- Crone, J.S., et al., 2014. Altered network properties of the fronto-parietal network and the thalamus in impaired consciousness. *NeuroImage: Clinical* 4, 240–248.
- De Pasquale, F., et al., 2010. Temporal dynamics of spontaneous MEG activity in brain networks. *Proc. Natl. Acad. Sci.* 107, 6040–6045.
- Delorme, A., Makeig, S., 2004. EEGLAB: an open source toolbox for analysis of single-trial EEG dynamics including independent component analysis. *J. Neurosci. Methods* 134, 9–21.
- Demertzi, A., et al., 2014. Multiple fMRI system-level baseline connectivity is disrupted in patients with consciousness alterations. *Cortex* 52, 35–46.
- Demertzi, A., et al., 2015. Intrinsic functional connectivity differentiates minimally conscious from unresponsive patients. *Brain* 138, 2619–2631.
- Desikan, R.S., et al., 2006. An automated labeling system for subdividing the human cerebral cortex on MRI scans into gyral based regions of interest. *Neuroimage* 31, 968–980.
- Di Perri, C., et al., 2016. Neural correlates of consciousness in patients who have emerged from a minimally conscious state: a cross-sectional multimodal imaging study. *Lancet Neurol.* 15, 830–842.
- Douw, L., et al., 2018. Consistency of magnetoencephalographic functional connectivity

- and network reconstruction using a template versus native MRI for co-registration. *Hum. Brain Mapp.* 39, 104–119.
- Engemann, D.A., et al., 2018. Robust EEG-based cross-site and cross-protocol classification of states of consciousness. *Brain* 141, 3179–3192.
- Fernández-Espejo, D., et al., 2012. A role for the default mode network in the bases of disorders of consciousness. *Ann. Neurol.* 72, 335–343.
- Fischl, B., 2012. FreeSurfer. *Neuroimage* 62, 774–781.
- Fornito, A., Zalesky, A., Bullmore, E., 2016. Fundamentals of Brain Network Analysis.
- Fries, P., 2015. Rhythms for cognition: communication through coherence. *Neuron* 88, 220–235.
- Garrison, K.A., et al., 2015. The (in) stability of functional brain network measures across thresholds. *Neuroimage* 118, 651–661.
- Giacino, J.T., et al., 2002. The minimally conscious state definition and diagnostic criteria. *Neurology* 58, 349–353.
- Giacino, J.T., Kalmar, K., Whyte, J., 2004. The JFK coma recovery scale-revised: measurement characteristics and diagnostic utility. *Arch. Phys. Med. Rehabil.* 85, 2020–2029.
- Giacino, J.T., et al., 2009. Behavioral assessment in patients with disorders of consciousness: gold standard or fool's gold? *Prog. Brain Res.* 177, 33–48.
- Giacino, J.T., et al., 2014. Disorders of consciousness after acquired brain injury: the state of the science. *Nat. Rev. Neurol.* 10, 99–114.
- Good, B.H., de Montjoye, Y.-A., Clauset, A., 2010. Performance of modularity maximization in practical contexts. *Phys. Rev. E* 81, 046106.
- Gosseries, O., Zasler, N.D., Laureys, S., 2014. Recent advances in disorders of consciousness: focus on the diagnosis. *Brain Inj.* 28, 1141–1150.
- Gottfried, J.A., O'Doherty, J., Dolan, R.J., 2003. Encoding predictive reward value in human amygdala and orbitofrontal cortex. *Science* 301, 1104–1107.
- Gramfort, A., et al., 2010. OpenMEEG: opensource software for quasistatic bioelectromagnetics. *Biomed. Eng. Online* 9, 45.
- Guimera, R., Amaral, L.A.N., 2005. Functional cartography of complex metabolic networks. *Nature* 433, 895–900.
- Hassan, M., Wendling, F., 2018. Electroencephalography source connectivity: aiming for high resolution of brain networks in time and space. *IEEE Signal Process. Mag.* 35, 81–96.
- Hassan, M., et al., 2014. EEG source connectivity analysis: from dense array recordings to brain networks. *PLoS One* 9, e105041.
- Hassan, M., et al., 2015. Dynamic reorganization of functional brain networks during picture naming. *Cortex* 73, 276–288.
- Hassan, M., et al., 2016. Identification of interictal epileptic networks from dense-EEG. *Brain Topogr.* 1–17.
- Hipp, J.F., et al., 2012. Large-scale cortical correlation structure of spontaneous oscillatory activity. *Nat. Neurosci.* 15, 884.
- Holmes, C.J., et al., 1998. Enhancement of MR images using registration for signal averaging. *J. Comput. Assist. Tomogr.* 22, 324–333.
- Jonckheere, A.R., 1954. A distribution-free k-sample test against ordered alternatives. *Biometrika* 41, 133–145.
- Kabbara, A., et al., 2017. The dynamic functional core network of the human brain at rest. *Sci. Rep.* 7.
- Kabbara, A., et al., 2018. Reduced integration and improved segregation of functional brain networks in Alzheimer's disease. *J. Neural Eng.* 15, 026023.
- Kjaer, T., et al., 2001. Precuneus–prefrontal activity during awareness of visual verbal stimuli. *Conscious. Cogn.* 10, 356–365.
- Lachaux, J.-P., et al., 1999. Measuring phase synchrony in brain signals. *Hum. Brain Mapp.* 8, 194–208.
- Lachaux, J.-P., et al., 2000. Studying single-trials of phase synchronous activity in the brain. *Int. J. Bifurcation Chaos* 10, 2429–2439.
- Lai, M., et al., 2018. A comparison between scalp-and source-reconstructed EEG networks. *Sci. Rep.* 8, 12269.
- Lancichinetti, A., Fortunato, S., 2012. Consensus clustering in complex networks. *Sci. Rep.* 2, 336.
- Laureys, S., et al., 2010. Unresponsive wakefulness syndrome: a new name for the vegetative state or apallic syndrome. *BMC Med.* 8, 68.
- Lisman, J.E., Jensen, O., 2013. The theta-gamma neural code. *Neuron* 77, 1002–1016.
- Long, J., et al., 2016. Distinct interactions between fronto-parietal and default mode networks in impaired consciousness. *Sci. Rep.* 6, 38866.
- Mehrkanoon, S., Breakspear, M., Boonstra, T.W., 2014. Low-dimensional dynamics of resting-state cortical activity. *Brain Topogr.* 27, 338–352.
- Melloni, L., et al., 2007. Synchronization of neural activity across cortical areas correlates with conscious perception. *J. Neurosci.* 27, 2858–2865.
- Mheich, A., et al., 2017. SimiNet: a novel method for quantifying brain network similarity. *IEEE Trans. Pattern Anal. Mach. Intell.* 40, 2238–2249.
- Monti, M.M., Laureys, S., Owen, A.M., 2010. The vegetative state. *Bmj* 341, c3765.
- Mucha, P.J., et al., 2010. Community structure in time-dependent, multiscale, and multiplex networks. *Science* 328, 876–878.
- Naro, A., et al., 2015. Moving toward conscious pain processing detection in chronic disorders of consciousness: anterior cingulate cortex neuromodulation. *J. Pain* 16, 1022–1031.
- Naro, A., et al., 2017. How far can we go in chronic disorders of consciousness differential diagnosis? The use of neuromodulation in detecting internal and external awareness. *Neuroscience* 349, 165–173.
- Owen, A.M., Schiff, N.D., Laureys, S., 2009. A new era of coma and consciousness science. *Prog. Brain Res.* 177, 399–411.
- Palva, J.M., et al., 2018. Ghost interactions in MEG/EEG source space: a note of caution on inter-areal coupling measures. *Neuroimage* 173, 632–643.
- Pascual-Marqui, R.D., et al., 2017. Innovations Orthogonalization: A Solution to the Major Pitfalls of EEG/MEG "Leakage Correction". *arXiv preprint arXiv:1708.05931*.
- Ren, Y., et al., 2018. Effective connectivity of the anterior hippocampus predicts recollection confidence during natural memory retrieval. *Nat. Commun.* 9, 4875.
- Rizkallah, J., et al., 2018. Dynamic reshaping of functional brain networks during visual object recognition. *J. Neural Eng.* 15, 056022.
- Rudebeck, P.H., Murray, E.A., 2014. The orbitofrontal oracle: cortical mechanisms for the prediction and evaluation of specific behavioral outcomes. *Neuron* 84, 1143–1156.
- Schiff, N.D., 2015. Cognitive motor dissociation following severe brain injuries. *JAMA Neurol.* 72, 1413–1415.
- Schiff, N.D., Fins, J.J., 2016. Brain death and disorders of consciousness. *Curr. Biol.* 26, R572–R576.
- Schoffelen, J.M., Gross, J., 2009. Source connectivity analysis with MEG and EEG. *Hum. Brain Mapp.* 30, 1857–1865.
- Sitt, J.D., et al., 2014. Large scale screening of neural signatures of consciousness in patients in a vegetative or minimally conscious state. *Brain* 137, 2258–2270.
- Stender, J., et al., 2014. Diagnostic precision of PET imaging and functional MRI in disorders of consciousness: a clinical validation study. *Lancet* 384, 514–522.
- Tadel, F., et al., 2011. Brainstorm: a user-friendly application for MEG/EEG analysis. *Comput. Intell. Neurosci.* 2011, 8.
- Terpstra, T., 1952. The asymptotic normality and consistency of Kendall's test against trend, when ties are present in one ranking. *Proc. Kon. Ned. Akad. v. Wetensch. A* 55, 327–333 [Terpstra32755Proc](#).
- Thibaut, A., et al., 2014. tDCS in patients with disorders of consciousness: sham-controlled randomized double-blind study. *Neurology* 82, 1112–1118.
- Tononi, G., 2004. An information integration theory of consciousness. *BMC Neurosci.* 5, 42.
- Tononi, G., et al., 2016. Integrated information theory: from consciousness to its physical substrate. *Nat. Rev. Neurosci.* 17, 450.
- Van de Steen, F., et al., 2016. Critical comments on EEG sensor space dynamical connectivity analysis. *Brain Topogr.* 1–12.
- van den Heuvel, M.P., et al., 2017. Proportional thresholding in resting-state fMRI functional connectivity networks and consequences for patient-control connectome studies: issues and recommendations. *Neuroimage* 152, 437–449.
- Vinck, M., et al., 2011. An improved index of phase-synchronization for electrophysiological data in the presence of volume-conduction, noise and sample-size bias. *Neuroimage* 55, 1548–1565.
- Vogt, B.A., Laureys, S., 2005. Posterior cingulate, precuneal and retrosplenial cortices: cytology and components of the neural network correlates of consciousness. *Prog. Brain Res.* 150, 205–217.
- Wannez, S., et al., 2017. The repetition of behavioral assessments in diagnosis of disorders of consciousness. *Ann. Neurol.* 81, 883–889.
- Watts, D.J., Strogatz, S.H., 1998. Collective dynamics of 'small-world' networks. *Nature* 393, 440–442.
- Zhang, S., Chiang-shan, R.L., 2012. Functional connectivity mapping of the human precuneus by resting state fMRI. *Neuroimage* 59, 3548–3562.