



HAL
open science

Influence of inflammasome pathway activation in macrophages on the matrix metalloproteinase expression of human hepatic stellate cells

Sacha Robert, Thomas Gicquel, Aude Bodin, Alain Fautrel, Emiliano Barreto, Tatiana Victoni, Vincent Lagente, Elisabeth Boichot

► To cite this version:

Sacha Robert, Thomas Gicquel, Aude Bodin, Alain Fautrel, Emiliano Barreto, et al.. Influence of inflammasome pathway activation in macrophages on the matrix metalloproteinase expression of human hepatic stellate cells. *International Immunopharmacology*, 2019, 72, pp.12-20. 10.1016/j.intimp.2019.03.060 . hal-02120881

HAL Id: hal-02120881

<https://univ-rennes.hal.science/hal-02120881>

Submitted on 21 Dec 2021

HAL is a multi-disciplinary open access archive for the deposit and dissemination of scientific research documents, whether they are published or not. The documents may come from teaching and research institutions in France or abroad, or from public or private research centers.

L'archive ouverte pluridisciplinaire **HAL**, est destinée au dépôt et à la diffusion de documents scientifiques de niveau recherche, publiés ou non, émanant des établissements d'enseignement et de recherche français ou étrangers, des laboratoires publics ou privés.



Distributed under a Creative Commons Attribution - NonCommercial 4.0 International License

Stress responses in fishes: from molecular to evolutionary processes

PETITJEAN Quentin^{1,2}, JEAN Séverine², GANDAR Allison², CÔTE Jessica¹, LAFFAILLE Pascal², JACQUIN Lisa¹

¹ *Laboratoire EDB Évolution & Diversité Biologique UMR 5174 ; Université de Toulouse, Université Toulouse 3 Paul Sabatier, UPS, CNRS, IRD ; 118 route de Narbonne, 31062 Toulouse, France.*

² *Laboratoire ECOLAB UMR 5245 ; CNRS, INPT-ENSAT, Université Toulouse 3 Paul Sabatier ; avenue de l'Agrobiopole, 31326 Castanet-Tolosan, France.*

Corresponding author:

Dr Lisa Jacquin

Université de Toulouse

Laboratoire Evolution et Diversité Biologique

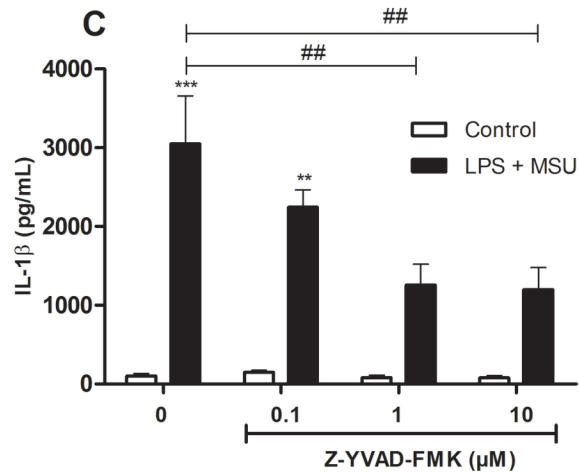
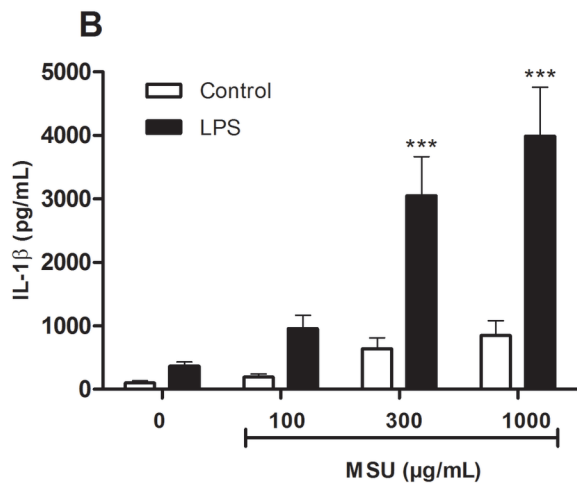
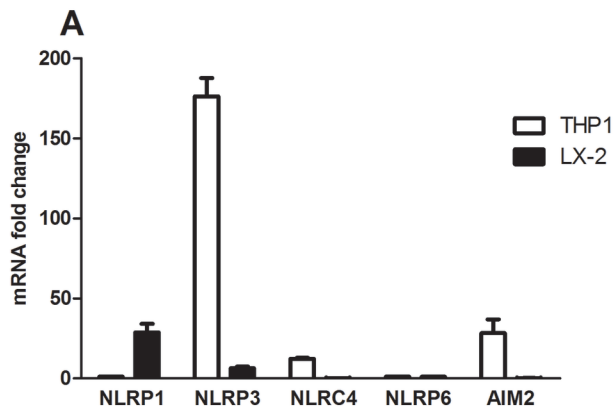
118 route de Narbonne, 31062 Toulouse cedex 9

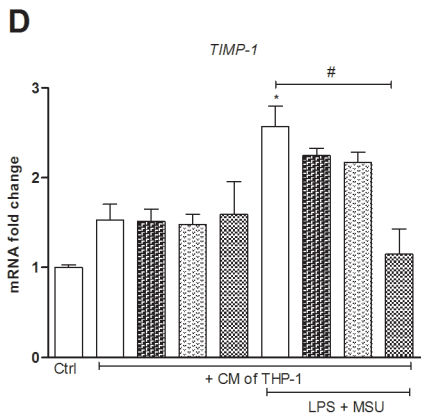
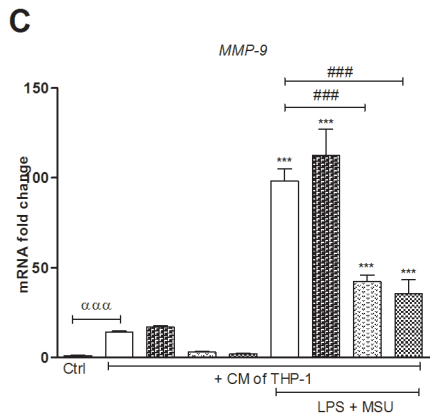
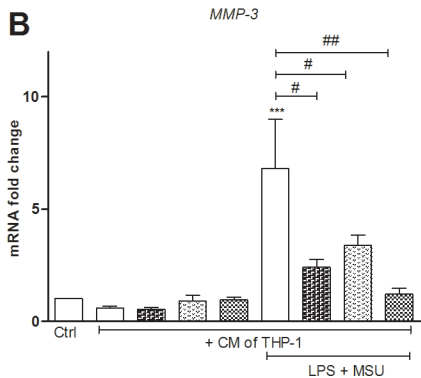
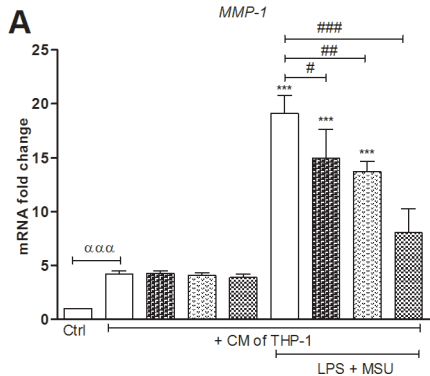
Tel: 033 5 61 55 64 74

Email: lisa.jacquin@univ-tlse3.fr

Running title: *Evolution of fish stress responses*

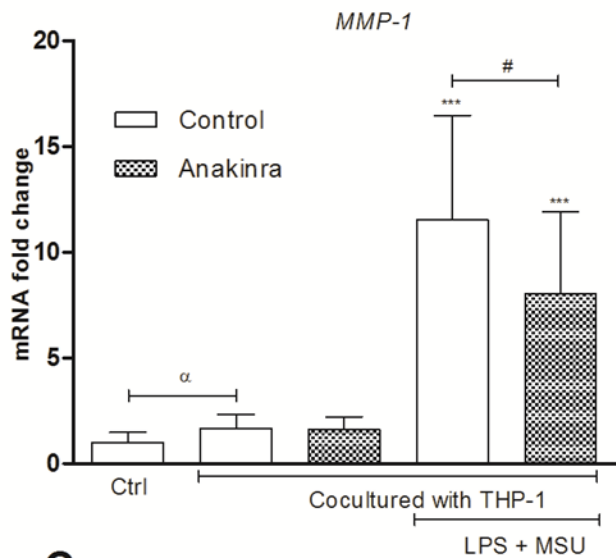
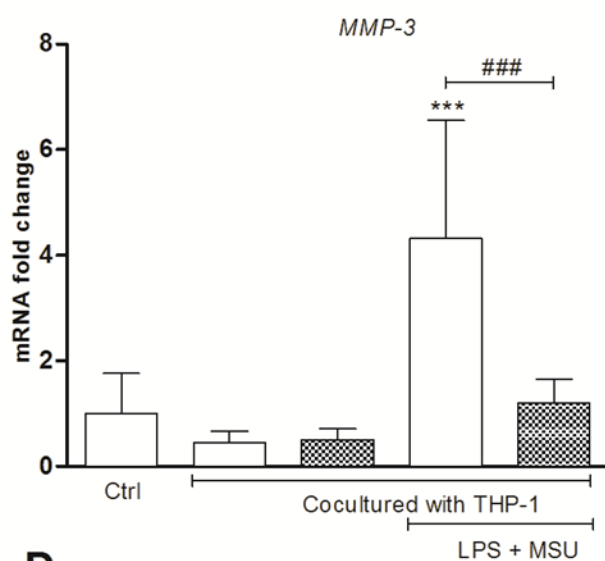
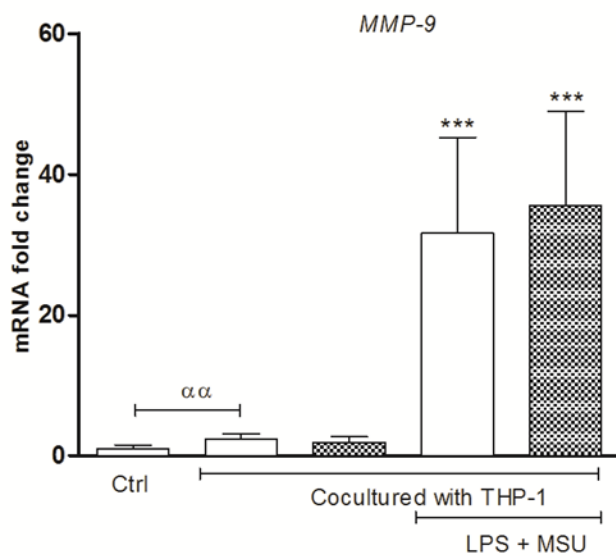
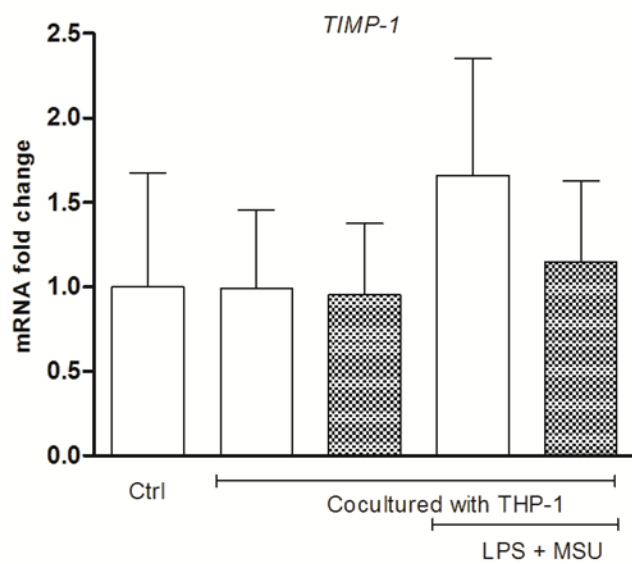
Word count: 5272 words

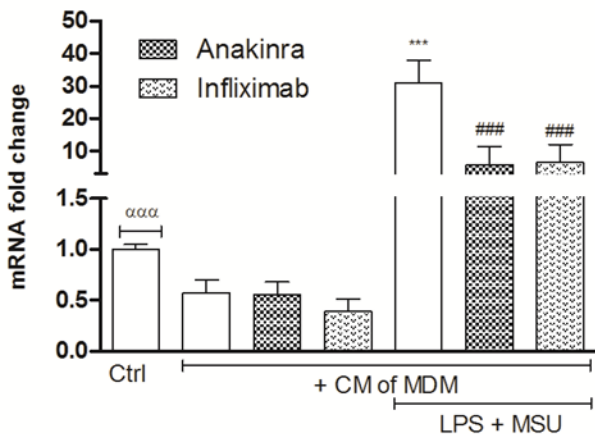
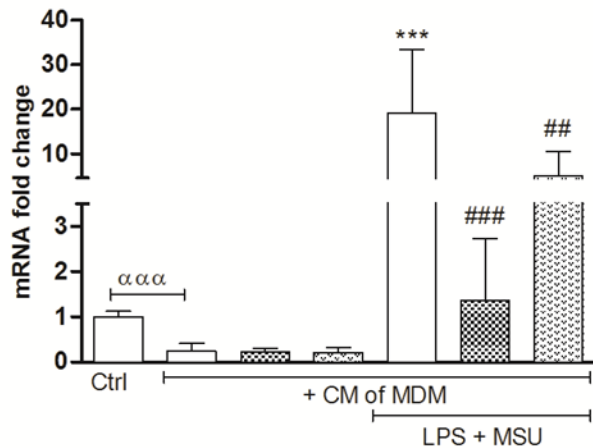
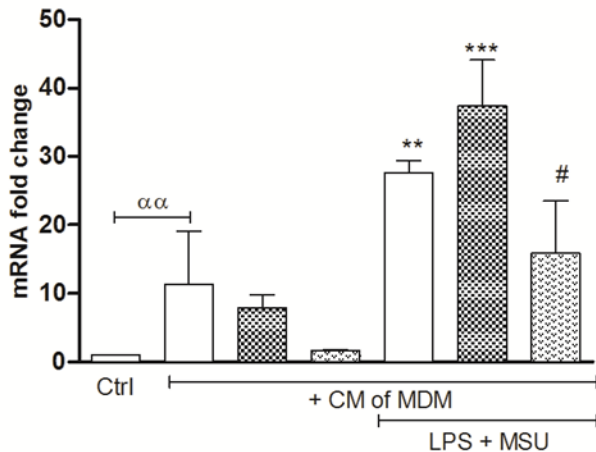
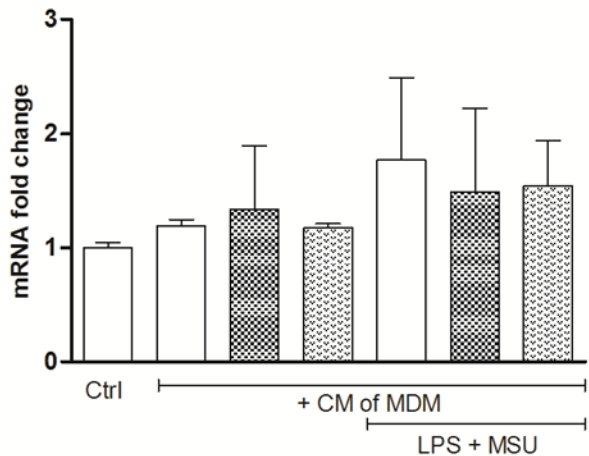




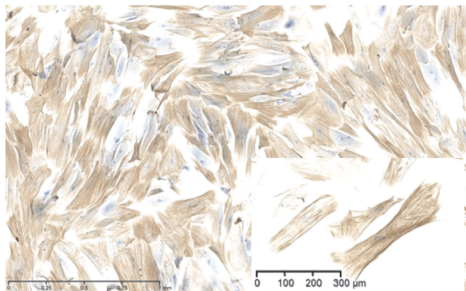
Control Z-YVAD-FMK

Infliximab Anakinra

A**B****C****D**

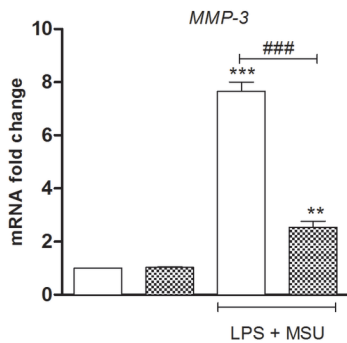
A*MMP-1***B***MMP-3***C***MMP-9***D***TIMP-1*

A

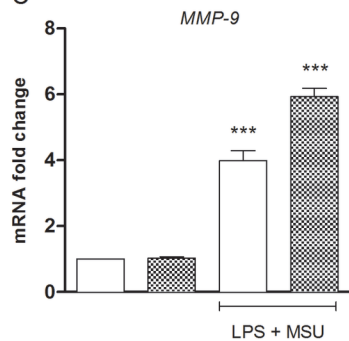


■ Anakinra 1 μg/mL

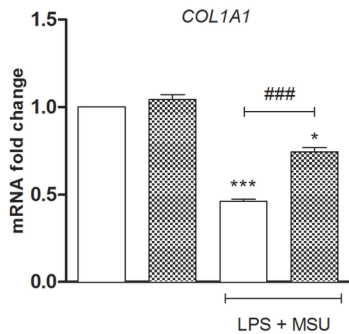
B



C



D



E

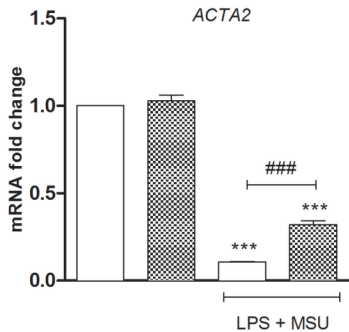


Table 1 - Primers used in this study for real-time PCR assay.

Human Gene name	Forward sequences 5' -> 3'	Reverse sequences 5' -> 3'
GAPDH	ATGACATCAAGAAGGTGGTG	CATACCAGGAAATGAGCTTG
NLRP1	GGACTGACGATGACTTCTGG	ATCACAAAGCAGAGACCCG
NLRP3	GTGTTTCGAATCCCACTGTG	TCTGCTTCTCACGTACTIONTCTG
NLRC4	CAGTCCCCTCACCATAGAAG	TCAAGTTACCCAAGCTGTCAG
NLRP6	TCTTCATCCACTCTTTCAGGC	CTCAGAAAGGTCTCGGCAG
AIM2	TGAAACCCCGAAGATCAACAC	CCCAGTACTTCCATTTTCCCAG
MMP3	GACAAAGGATACAACAGGGAC	TGAGTGAGTGATAGAGTGGG
MMP9	CGAACTTTGACAGCGACAAG	CACTGAGGAATGATCTAAGCCC
COL1A1	CCGGCTCCTGCTCCTCTTAGCG	CGTTCTGTACGCAGGTGATTGGTGG
ACTA2	CATCCTCATCCTCCCTTGAG	ATGAAGGATGGCTGGAACAG