



HAL
open science

Back pain following instillations of BCG for superficial bladder cancer is not a reactive complication review of 30 Mycobacterium bovis BCG vertebral osteomyelitis cases

Simon Cadiou, Omar Al Tabaa, Chi-Duc Nguyen, Marine Faccin, Raphaël Guillin, Matthieu Revest, Pascal Guggenbuhl, Eric Houvenagel, Edouard Pertuiset, Guillaume Coiffier

► To cite this version:

Simon Cadiou, Omar Al Tabaa, Chi-Duc Nguyen, Marine Faccin, Raphaël Guillin, et al.. Back pain following instillations of BCG for superficial bladder cancer is not a reactive complication review of 30 Mycobacterium bovis BCG vertebral osteomyelitis cases. *Clinical Rheumatology*, 2019, 38 (6), pp.1773-1783. 10.1007/s10067-019-04500-w . hal-02087901

HAL Id: hal-02087901

<https://univ-rennes.hal.science/hal-02087901>

Submitted on 11 Apr 2019

HAL is a multi-disciplinary open access archive for the deposit and dissemination of scientific research documents, whether they are published or not. The documents may come from teaching and research institutions in France or abroad, or from public or private research centers.

L'archive ouverte pluridisciplinaire **HAL**, est destinée au dépôt et à la diffusion de documents scientifiques de niveau recherche, publiés ou non, émanant des établissements d'enseignement et de recherche français ou étrangers, des laboratoires publics ou privés.

Back pain following instillations of BCG for superficial bladder cancer is not a reactive complication: review of 30 *Mycobacterium bovis* BCG vertebral osteomyelitis cases.

Cadiou Simon¹; Al Tabaa Omar²; Nguyen Chi-Duc³; Faccin Marine⁴; Guillin Raphaël⁵; Revest Matthieu⁶; Guggenbuhl Pascal^{4,7,8}; Houvenagel Eric³; Pertuiset Edouard²; Coiffier G^{4,8}.

¹ Department of Rheumatology, Centre Hospitalier Universitaire de Rennes, 16 Boulevard de Bulgarie, 35200 Rennes, France, simon.cadiou@chu-rennes.fr, 02.99.26.31.21, fax : 02.99.26.71.90

² Department of Rheumatology, Centre Hospitalier René Dubos, 95301, Pontoise, France

³ Department of Rheumatology, Hôpital St Philibert GHICL 249 Rue du grand but 59462 Lomme

⁴ Department of Rheumatology, Centre Hospitalier Universitaire de Rennes, 35000, France

⁵ Department of Medical Imaging, Centre Hospitalier Universitaire de Rennes, 35000, France.

⁶ Infectious Diseases and Intensive Care Unit, CHU Univ Rennes, Inserm U 1230, F-35000 Rennes

⁷ CHU Rennes, Univ Rennes, INSERM, Institut NUMECAN (Nutrition Metabolisms and Cancer), F-35000 Rennes

⁸ UMR INSERM U 1241, University of Rennes 1, 35000 Rennes, France

Abstract

Introduction: *Mycobacterium bovis* BCG instillations are used in bladder cancer treatment. Adverse effects can occur. Osteoarticular complications are mainly reactive arthritis, but true infections have been described, such as vertebral osteomyelitis.

Methods: We made a review of *M. bovis* BCG vertebral osteomyelitis after instillations for bladder cancer using PubMed search. We added 3 new French cases.

Review: Twenty-seven cases of BCG vertebral osteomyelitis had been reported on PubMed. Of the 30 cases, all were male, averaging 73.4 ± 8.7 year-old. Median time between diagnosis and first and last instillation was 22.5 months and 14 months respectively. Half of vertebral osteomyelitis was thoracic, and lumbar in the other half. Sensitivomotor deficit was present at diagnosis in 42% of cases. Other infectious locations were common, mainly infectious abdominal aortic aneurysms (20%). Rifampicin, ethambutol and isoniazid were the usual therapy. Poor outcomes were reported with 50% of one or more spine surgery.

Conclusion: *M. bovis* BCG vertebral osteomyelitis following bladder instillation for bladder cancer is a rare complication. However, the late onset of back pain after instillations differentiates them from reactive arthritis. Concomitant septic location such as infectious abdominal aortic aneurysms must be known.

Keywords: Bladder cancer, BCG-instillation, *Mycobacterium bovis*, vertebral osteomyelitis, Interferon- γ release assay

1. Introduction

Mycobacterium tuberculosis is the most frequent pathogen of vertebral osteomyelitis worldwide [1], and represent half of osteoarticular tuberculous infections [2]. In the past decades in developed countries, the incidence of tuberculosis in spinal infections decreased, involving 6% of vertebral osteomyelitis[3].

Bacillus Calmette-Guérin (BCG) is a strain obtained from *Mycobacterium bovis*, used for vaccination and immunotherapy for bladder cancer since 1976 [4]. Complications of bladder instillations occur in about 5% or less of patients [5], mainly with local urinary adverse effects such as pollakiuria, cystitis or haematuria.

Systemic reactions with spinal involvement such as Reactive Arthritis (ReA) [6] can appears in weeks following instillations. Two principal clinical patterns were described: symmetric or asymmetric polyarthritis (involving small or large and upper–lower joints are more common than asymmetric mono-oligoarthritis the large joints of lower limbs (especially, knee and ankle). Actually, ReA after BCG bladder instillations cannot be fully integrated in the spondyloarthritis concept, because clinical patterns are less correlated with HLA B27 status, if compared with ReA from enteric and urogenital infections, and the sacro-iliac or spinal involvement are rarer [6].

However, ReA after BCG bladder instillations are not the only osteoarticular events described in literature, and true infections such as mycobacterial vertebral osteomyelitis have also been described. Therefore, we performed a literature review of 27 cases previously published [7–33], and we had three original French cases.

2. Original cases

A. Case 1

A 65-year-old male was admitted to Pontoise hospital in January 2014 for low back pain which lasted for three months. His medical history included weaned smoking, hypertension, and a non-infiltrating urothelial carcinoma of the bladder. He was treated from December 2012 to March 2013 with six BCG instillations. Low back pain began rapidly, 6 months after the end of BCG instillation without any other triggering factor. He had lost eight kilos in three months and developed night sweats. A first X-ray showed moderate osteoarthritis of the spine. In December 2013, Magnetic Resonance Imaging (MRI) was performed. An inflammatory signal of L3 and L2 vertebral bodies and L2-L3 discs was found, with slight soft tissue reaction. Metastatic bone involvement was first suspected.

The physical examination on his admission in the rheumatology unit showed limited multidirectional lumbar mobility of the lumbar spine, without neurological deficit. The rest of the medical examination was normal. C-reactive protein (CRP) was high, at 123 mg/L. A PET-scan was performed. It showed an intense uptake of L2 and L3 vertebral bodies. Finally, an L3 bone biopsy was performed showing non-specific osteitis without granuloma. Acid-fast bacillus (AFB) testing and bacterial cultures including Lowenstein and Coletsofs were negative. In February 2014, a second MRI demonstrated a typical image of L2-L3 spondylodiscitis with pre- and paravertebral abscesses. A new biopsy did not show histological abnormalities, but two samples were positive for *Staphylococcus epidermidis*. Antibiotics were started, without biological improvement. During hospitalisation, the patient became confused and developed pyramidal signs, without neurological deficit. A new MRI demonstrated vertebral fracture of L2 with retreat of the posterior wall, mild epidural involvement, partial compression of cauda equina, associated with a right psoas abscess (**Figure 1**).

At needle aspiration of the psoas abscess direct examination for acid-fast bacilli (AFB) was positive, A 4-drug anti-tuberculosis therapy was then initiated. PCR identified *M. tuberculosis* complex (MBTC), and cultures revealed six weeks later *M. bovis*, finally identified as *M. bovis* BCG by the French national reference center for tuberculosis. Pyrazinamide was discontinued. Surgical treatment was performed due to neurological signs and vertebral instability, consisting of L2 vertebrectomy, posterior laminectomy of L3 and T11-L5 arthrodesis. Ethambutol was stopped after two months. Isoniazid and rifampicin were continued for a total duration of three years because of persisting images in the psoas on MRI. Clinical, biological and radiological outcome was good. Thirteen months after discontinuing treatments, the patient was considered to be cured.

B. Case 2

A 73-year-old man was hospitalised in Rennes University Hospital in July 2017 for low back pain for 11 weeks. His medical history only reported a urothelial carcinoma, treated with transurethral resection of bladder tumor (TURBT) and 9 instillations of BCG, ended in December 2016. He was a retired veterinarian. Low back pain onset was reported as brutal, triggered by a bending effort. Secondly, he developed anorexia, weight loss and asthenia.

Before his hospitalisation, he was examined with a CT-scan showing an osteolysis of L1 vertebral body. He was referred to his oncologist and had a PET-scan as part of a metastatic hypothesis. It showed an uptake of L1 and L2 vertebral bodies (**Figure 2**), with possible epiduritis. For further explorations, he had lumbar spine

MRI two months after the first symptoms (**Figure 2**). A typical vertebral osteomyelitis of L1 and L2 vertebral bodies was found, with centro-somatic erosion suggesting a *Mycobacterium* infection.

The physical examination at his admission only showed limited multidirectional lumbar mobility, and no neurological impairment. Laboratory analysis showed a normal white blood cell (WBC) count, and a high CRP level of 70 mg/L. A first discovertebral puncture was negative on direct examination, MBTC PCR was negative, and cultures were sterile after seven days. A puncture of the right psoas abscess showed AFB on direct examination. MBTC was identified in a culture six days later. The search for mutation of *rpoB* that confers resistance to rifampicin was negative, and an anti-tuberculosis quadritherapy was started. *M. bovis* BCG was finally identified by PCR and pyrazinamide was stopped. In June 2018, the patient had an excellent evolution, with a good tolerance of his nine months of triple therapy.

C. Case 3

A 77-year-old man, with a history of gastric adenocarcinoma (1996), urothelial carcinoma (2011) and chronic alcoholism, was hospitalised in August 2017 in the rheumatology department of the Saint Philibert hospital (Lomme) for insidious onset of low back pain a few weeks earlier. He had been diagnosed with a bladder papillary urothelial carcinoma (pTa high-grade) in 2011, treated by transurethral resection in July 2011, followed by intravesical BCG therapy from September 2011 to August 2014. He reported inflammatory back pain evolving since 2016, without radiculalgia. There was no weight loss. He experienced fever at 38.2°C, associated with an increase of CRP levels of 126 mg/L.

Spine MRI showed an L4-L5 vertebral osteomyelitis with fluid collection developed in the epidural space, sheathing the right L5 and S1 roots. A discovertebral biopsy was performed, showing AFB on direct examination and the MTBC was detected using real-time PCR. Other tests were unremarkable (negative HIV serology, CD4 cell count was normal, no hypogammaglobulinemia, no hypocomplementemia). The thoraco-abdomino-pelvic CT scan did not find another tuberculous localisation. Blood cultures were sterile and the interferon-gamma release assays were negative. The culture was sterile. The patient did not report any contact with tuberculosis. Antituberculosis therapy with isoniazid, rifampicin and ethambutol was introduced. Evolution was favourable after 12 months of treatment, with a decrease in pain and fever, and a decrease in acute phase reactants. At the end of follow-up, he was just diagnosed with lung cancer.

3. Methods

Based on PubMed research on the 1st January 2019, we used to identify *Mycobacterium bovis* BCG vertebral osteomyelitis the following keywords: “osteomyelitis AND BCG AND bladder”, “spondylodiscitis AND BCG AND bladder”, “spondylitis AND BCG AND bladder”. Seventy-five articles had been identified. We also used the keywords “aneurysm AND BCG AND bladder”, and looked for vertebral osteomyelitis due to overlap with *M. bovis* BCG infectious aneurysms, identifying 42 articles.

A total of 117 articles had been identified, and 24 cases had been included. Three other articles had been identified through previous reviews (**Figure 3**). We had three original French cases.

4. Review

Since 1992, 25 cases of *M. bovis* BCG vertebral osteomyelitis following instillations for bladder cancer have been reported in English literature [7–31] and two cases in non-English literature [32, 33]. Other articles with *M. bovis* BCG infection and spinal pain have been published [34–36], but they were not consistent with a vertebral osteomyelitis diagnosis. The frequency is possibly underestimated knowing the possible difficulties in documenting such an infection, as in two other publications [27, 37].

A. Clinical characteristics

We have collected information from 30 cases (27 literature cases and our 3 new cases), and we have listed the main features in **Table 1**. Diagnostic characteristics are resumed in **Table 2**. Case 3 was included in our review, given the recently proven usefulness of interferon- γ release assay in vertebral osteomyelitis infection with *Mycobacterium tuberculosis* [38], and its recommendation by the IDSA (Infectious Diseases Society of America) [39].

We have estimated from these articles the period of time between the first and the last BCG instillation and the diagnosis (i.e. bacteriological diagnosis). When the dates mentioned in the article were not sufficiently detailed, we considered the first and the last instillation time-lap as the same. The median time between diagnosis and first or last instillation was 22.5 ± 28.5 months and 14 ± 25.5 months, respectively. At mean, patients received 9.4 ± 4.6 instillations of BCG. There was not enough information about the BCG strains to establish a difference between them. Seven of 30 cases had a cancer in their medical past history. No one had received immunosuppressive therapy between instillation and vertebral osteomyelitis diagnosis. Neoplasia was

considered as cured, in remission [20], or localized [10, 23]. No patients had received DMARDs for rheumatic condition, and one had psoriasis without musculoskeletal disorder.

All *M. bovis* BCG vertebral osteomyelitis cases occurred in men of 73.4 ± 8.7 -year-old. Twenty-six cases involved two contiguous vertebrae, and two cases one vertebra. Half of infections affected the thoracic spine (from T1-T2 to T12-L1), and the other half affected the lumbar spine (from L1-L2 to L5-S1). No cervical osteomyelitis was reported. Back pain was almost always present (97%). The median of back pain duration at diagnosis was 5 (1-9) months, and the median period of time between the last instillation and back pain was 5 (0-16.5) months. No peripheral skeletal involvement had been reported.

Clinically, fever was reported only in 20% of cases, 75% developed anorexia and/or weight loss and/or asthenia. Sensitivo-motor deficit was present at diagnosis in 42% of cases.

On imaging (CT scan and/or MRI) 70% had epiduritis or epidural abscesses (**Figure 1**), and 47% had paravertebral/psoas abscesses (**Figure 1 and 2**). Other infectious locations occurred in nine cases, mostly abdominal aortic aneurysms.

Biologically, 77% of patients had CRP > 5 mg/l, and 21% an elevated WBC count. The tuberculin test was negative for 5 out of 6 patients, and the seven IFN-gamma tests were all negative (only one patient receive both tests, both negative). Biopsy showed a granuloma in 60% of cases, of which 56% was necrotic. *Mycobacterium bovis* BCG was almost always identified through cultures.

The direct exam was positive in 55% of bacteriological samples. All molecular tests and PCR were positive. Bacteriological identification was done through CT-guided biopsy with 79% positivity, and through surgical biopsy or abscess puncture which were always positive. When CT-guided biopsies were negative, diagnosis was made with surgical biopsy in two cases, and with abscess puncture in two cases. Abscess puncture was the only procedure used in four cases.

B. Treatment and outcomes

Frequently, the classical anti-tuberculosis therapy was started, and then Pyrazinamide was stopped when BCG was identified due to BCG natural resistance[40]. Isoniazid, rifampicin and ethambutol were normally used throughout the treatment period. Nevertheless, antibiotic modalities were heterogeneous (**Table 1**). Treatment duration, known for 20 cases, was 12.1 ± 7.0 months.

The outcome was known for 14 patients with 18.5 months of mean follow up: 12 cases were considered cured, and 2 died from cardiovascular causes without vertebral osteomyelitis symptoms. Fifty percent had one or more cases of spine surgery, (ranging from one to three surgeries). Among them, five patients had spinal arthrodesis during the follow-up: three for neurological worsening, one for persistent root pain, and one for vertebral instability.

C. Comparison of *M. bovis* BCG with *M. tuberculosis*

Compared to vertebral osteomyelitis due to *M. tuberculosis* [41], *M. bovis* BCG vertebral osteomyelitis seems to involved an older population with a male predominance, probably due to the bladder cancer population. However, we noticed that all cases in this review were men, while 74.1% of non-muscle-invasive bladder carcinoma in the United States are male [42]. About clinical presentation, lumbar and thoracic involvement of BCG vertebral osteomyelitis were consistent with literature, but no cases of nonadjacent multiple-level involvement were reported with BCG after bladder instillation. Neurological complications at diagnosis and psoas abscesses prevalence seems to be higher in BCG than tuberculosis.

In contrast of tuberculosis, there was no other sites of *M. bovis* BCG vertebral osteomyelitis infection, whereas vertebral Pott's disease is frequently associated to pulmonary tuberculosis at diagnosis. We assumed that's it's probably due to the gateway of *Mycobacteria*: through airway contamination leading to pulmonary tuberculosis, and through catheterization leading to local urinary reaction or systemic reaction which are sometimes treated with antituberculosis treatment, decreasing risk of other infection.

D. Pathogenesis discussion

BCG instillations are a cornerstone for superficial bladder carcinoma treatment, and they have changed the prognosis of this disease [4, 5]. Septic side effects are rare, between 0.4% and 1/15,000 according to Lamm [5], and the benefit of the treatment remains higher than the risk of such events. However, other distant infections are described in the literature, mostly vascular aneurysms in a recent literature review [43], but also disseminated infections also called BCGitis [44], small-vessel central nervous system vasculitis [45] and even nosocomial infections, including vertebral osteomyelitis [46]. Some risk factors of distant infections could be suggested: a traumatic catheterisation during instillation [5], haematuria, instillations in the few days around an urological trauma [28] (pelvic radiation, surgery, bladder resection), arterial catheterisation [13], and general immunosuppressive factor such as HIV infection.

Pathogenesis of *M. bovis* BCG-associated infections following instillations can be supported in three

ways. First, through the pelvic lymphatic drainage system, particularly for psoas abscesses. Even if iliopsoas abscess pathogenesis is not clear, haematogenous or lymphatic spread is commonly admitted [47]. Such abscesses can be linked to BCG spread from bladder to the lymph nodes, particularly those closely related to the iliopsoas muscle, such as the common iliac and paravertebral lymph nodes. However, an exclusive lymphatic pathogenesis underlies an infection by contiguity only with vertebrae which have an anatomical relationship with iliopsoas, i.e. T12 to L4. Secondly, as recently suggested [28], through the vertebral venous plexus (known as Batson's venous plexus). Once again, a venous spread of BCG does not explain thoracic osteomyelitis. Finally, through an arterial route: Higashi *et al.* [43] suggested a septic aneurysm pathogenesis from *vasa vasorum*, or directly by adhesion on atherosclerotic degeneration in a review of 29 cases (including three common cases of patients with vertebral osteomyelitis and infectious aneurysm).

Considering these vascular infections and the pathogenesis of haematogenous spread in vertebral osteomyelitis, arterial dissemination seems to be the principal way, as suggested by Civen *et al.* [10] who described a positive blood culture of BCG. However, there seems to be an association between infectious aneurysm and vertebral osteomyelitis: among the 17 cases including L1 to L4 vertebral involvement (i.e., vertebrae having a direct anatomical relationship with the abdominal aorta), there were five out of six cases of infectious aneurysm, and only one thoracic osteomyelitis was associated with infectious aneurysm. This higher frequency of aneurysms in lumbar osteomyelitis suggests pathogenesis other than the arterial route for aneurysms. Finally, a simultaneous infectious aneurysm may also seem to be associated with cardiovascular risk, because of a more frequent cardiovascular medical history (**Table 1**).

Mycobacterium bovis BCG identification is crucial in *M. bovis* BCG associated osteomyelitis. Culture is the first step, but a specific identification has to be done. Oldest cases used high-pressure liquid chromatography (HPLC), which has been nowadays replaced by molecular techniques. Multiplex PCR targeting specific regions of *Mycobacterium spp.* genomes can now differentiate with a total specificity [48] *M. bovis* BCG from the others mycobacteria. It means that, when vertebral osteomyelitis is suspected in a patient with medical history of BCG instillations for bladder carcinoma, AFB on direct examination or positive culture for MTBC must have the biologist carry out the precise identification of the strain by multiplex PCR, including BCG detection, the therapeutic impact being significant.

Other related events following BCG instillations were described, such as ReA [6] with a HLA-B27 (or B51 in the Japanese population) association, suggesting a Th17 response. On the other hand, the anti-tumour effect of BCG therapy is based on a Th1 response [49] as well as the anti-infectious response. Tumour recurrence could not be evaluated in this review but occurred in eight patients. Based on purely immunological considerations, we assume that there could be a link between tumour recurrence and these signalling pathways. *M. bovis* BCG associated infections could be correlated to a lack of Th1 lymphocyte polarisation, and thus an increased risk of recurrence, making *M. bovis* BCG-associated infections a risk factor for the inefficacy of BCG instillations. In the same way, Th17 polarisation observed in ReA could reduce a Th1 response (because of the exclusive nature of the polarisation [50]). Such assumptions need more specific studies to evaluate correlations between tumour recurrence, infections and immunological reactions.

In conclusion, when vertebral osteomyelitis is suspected in a man with a medical history of bladder carcinoma treated with BCG instillations, *M. bovis* BCG osteomyelitis must be sought even if the last instillation was months before. A direct exam showing AFB and positive cultures followed by multiplex PCR are used for bacteriological diagnosis. The presence of aneurysms at osteomyelitis diagnosis should be investigated because of its potential life-threatening complications. The treatment is not codified, but the pyrazinamide resistance must be known. The duration of anti-tuberculosis therapy is heterogeneous, and individual adaptation has to be done, regards to the septic severity, neurological deficit, or treatment adverse effects.

Disclosure of interest

The authors declare that they have no competing interest.

References

1. Gouliouris T, Aliyu SH, Brown NM (2010) Spondylodiscitis: update on diagnosis and management. *J Antimicrob Chemother* 65 Suppl 3:iii11-24. <https://doi.org/10.1093/jac/dkq303>
2. Tuli SM (2002) General principles of osteoarticular tuberculosis. *Clin Orthop* 11–19
3. Douchi M, Seng P, Menard A, et al (2015) Changing trends in the epidemiology of vertebral osteomyelitis in Marseille, France. *New Microbes New Infect* 7:1–7. <https://doi.org/10.1016/j.nmni.2015.04.008>

4. Morales A, Eidinger D, Bruce AW (1976) Intracavitary Bacillus Calmette-Guerin in the treatment of superficial bladder tumors. *J Urol* 116:180–183
5. Lamm DL (2000) Efficacy and safety of bacille Calmette-Guérin immunotherapy in superficial bladder cancer. *Clin Infect Dis Off Publ Infect Dis Soc Am* 31 Suppl 3:S86-90. <https://doi.org/10.1086/314064>
6. Bernini L, Manzini CU, Giuggioli D, et al (2013) Reactive arthritis induced by intravesical BCG therapy for bladder cancer: our clinical experience and systematic review of the literature. *Autoimmun Rev* 12:1150–1159. <https://doi.org/10.1016/j.autrev.2013.06.017>
7. Katz DS, Wogalter H, D'Esposito RF, Cunha BA (1992) Mycobacterium bovis vertebral osteomyelitis and psoas abscess after intravesical BCG therapy for bladder carcinoma. *Urology* 40:63–66
8. Stone DR, Estes NA, Klemptner MS (1993) Mycobacterium bovis infection of an implantable defibrillator following intravesical therapy with bacille Calmette-Guérin. *Clin Infect Dis Off Publ Infect Dis Soc Am* 16:825–826
9. Fishman JR, Walton DT, Flynn NM, et al (1993) Tuberculous spondylitis as a complication of intravesical bacillus Calmette-Guerin therapy. *J Urol* 149:584–587
10. Civen R, Berlin G, Panosian C (1994) Vertebral osteomyelitis after intravesical administration of bacille Calmette-Guérin. *Clin Infect Dis Off Publ Infect Dis Soc Am* 18:1013–1014
11. Morgan MB, Iseman MD (1996) Mycobacterium bovis vertebral osteomyelitis as a complication of intravesical administration of Bacille Calmette-Guérin. *Am J Med* 100:372–373. [https://doi.org/10.1016/S0002-9343\(97\)89500-9](https://doi.org/10.1016/S0002-9343(97)89500-9)
12. Rozenblit A, Wasserman E, Marin ML, et al (1996) Infected aortic aneurysm and vertebral osteomyelitis after intravesical bacillus Calmette-Guérin therapy. *AJR Am J Roentgenol* 167:711–713. <https://doi.org/10.2214/ajr.167.3.8751686>
13. LaBerge JM, Kerlan RK, Reilly LM, Chuter TA (1999) Diagnosis please. Case 9: mycotic pseudoaneurysm of the abdominal aorta in association with mycobacterial psoas abscess--a complication of BCG therapy. *Radiology* 211:81–85. <https://doi.org/10.1148/radiology.211.1.r99ap4081>
14. Aljada IS, Crane JK, Corriere N, et al (1999) Mycobacterium bovis BCG Causing Vertebral Osteomyelitis (Pott's Disease) Following Intravesical BCG Therapy. *J Clin Microbiol* 37:2106–2108
15. Abu-Nader R, Terrell CL (2002) Mycobacterium bovis vertebral osteomyelitis as a complication of intravesical BCG use. *Mayo Clin Proc* 77:393–397. [https://doi.org/10.1016/S0025-6196\(11\)61795-3](https://doi.org/10.1016/S0025-6196(11)61795-3)
16. Dahl T, Lange C, Ødegård A, et al (2005) Ruptured abdominal aortic aneurysm secondary to tuberculous spondylitis. *Int Angiol J Int Union Angiol* 24:98–101
17. Nikaido T, Ishibashi K, Otani K, et al (2007) Mycobacterium bovis BCG Vertebral Osteomyelitis after Intravesical BCG Therapy, Diagnosed by PCR-Based Genomic Deletion Analysis. *J Clin Microbiol* 45:4085–4087. <https://doi.org/10.1128/JCM.01714-07>

18. Mavrogenis AF, Sakellariou VI, Tsiodras S, Papagelopoulos PJ (2009) Late Mycobacterium bovis spondylitis after intravesical BCG therapy. *Jt Bone Spine Rev Rhum* 76:296–300.
<https://doi.org/10.1016/j.jbspin.2008.10.011>
19. Colebatch AN, Mounce KE (2010) Mycobacterium bovis discitis as a complication of intravesical Bacillus Calmette-Guérin therapy. *J Clin Rheumatol Pract Rep Rheum Musculoskelet Dis* 16:74–75. <https://doi.org/10.1097/RHU.0b013e3181d070ea>
20. Josephson CB, Al-Azri S, Smyth DJ, et al (2010) A case of Pott's disease with epidural abscess and probable cerebral tuberculoma following Bacillus Calmette-Guérin therapy for superficial bladder cancer. *Can J Infect Dis Med Microbiol* 21:e75–e78
21. Patel AR, Sabanegh ES, Jones JS, et al (2010) Bacillus Calmette-Guérin osteomyelitis mimicking spinal metastasis from urothelial cell carcinoma of the bladder. *Eur Urol* 58:934–937.
<https://doi.org/10.1016/j.eururo.2009.05.045>
22. Obaid S, Weil AG, Rahme R, et al (2011) Mycobacterium bovis spondylodiscitis after intravesical Bacillus Calmette-Guérin therapy. *Surg Neurol Int* 2:. <https://doi.org/10.4103/2152-7806.89879>
23. Samadian S, Phillips FM, Deeab D (2013) Mycobacterium bovis vertebral osteomyelitis and discitis with adjacent mycotic abdominal aortic aneurysm caused by intravesical BCG therapy: a case report in an elderly gentleman. *Age Ageing* 42:129–131.
<https://doi.org/10.1093/ageing/afs164>
24. Santbergen B, Vriens PHWE, de Lange WCM, Van Kasteren MEE (2013) Combined infection of vertebroplasty and aortic graft after intravesical BCG treatment. *BMJ Case Rep* 2013:.
<https://doi.org/10.1136/bcr-2012-008161>
25. Newman JR, Clough LA, Merino F (2014) Mycobacterium bovis Osteomyelitis of the Thoracic Spine Mimicking a Metastatic Lytic Lesion in a Patient Exposed to Intravesicular Bacille Calmette-Guérin Treatment. *Urol Case Rep* 2:142–144.
<https://doi.org/10.1016/j.eucr.2014.04.005>
26. Dąbrowska M, Drabarek T, Muraszko-Klaudiel A, Sławek J (2015) A thoracic tuberculous spondylodiscitis after intravesical BCG immunotherapy of bladder cancer - Case report and literature review. *Neurol Neurochir Pol* 49:460–466.
<https://doi.org/10.1016/j.pjnns.2015.09.005>
27. Białocki J, Nowak-Misiak M, Rapała K, et al (2016) Spinal tuberculosis with severe neurological symptoms as a complication of intravesical BCG therapy for carcinoma of the bladder. *Neurol Neurochir Pol* 50:131–138. <https://doi.org/10.1016/j.pjnns.2015.12.003>
28. Mackel CE, Burke SM, Huhta T, et al Mycobacterial Osteomyelitis of the Spine Following Intravesical BCG Therapy for Bladder Cancer. *Cureus* 8:. <https://doi.org/10.7759/cureus.545>
29. Miyazaki M, Yoshiiwa T, Ishihara T, et al (2016) Tuberculous Spondylitis following Intravesical Bacillus Calmette-Guerin for Bladder Cancer. *Case Rep Orthop* 2016:.
<https://doi.org/10.1155/2016/6741284>
30. Seegobin K, Maharaj S, Baldeo C, et al (2017) Mycobacteria Bovis osteomyelitis following intravesical BCG for bladder cancer. *IDCases* 10:75–78.
<https://doi.org/10.1016/j.idcr.2017.09.008>

31. Kusakabe T, Endo K, Nakamura I, et al (2018) Bacille Calmette-Guérin (BCG) spondylitis with adjacent mycotic aortic aneurysm after intravesical BCG therapy: a case report and literature review. *BMC Infect Dis* 18:. <https://doi.org/10.1186/s12879-018-3205-7>
32. Stahl T, Engelhardt F, Layer G (2013) [Rare, but significant complication after BCG instillation therapy after urothelial carcinoma]. *ROFO Fortschr Geb Rontgenstr Nuklearmed* 185:1199–1200. <https://doi.org/10.1055/s-0033-1335877>
33. Lara-Oya A, Ramírez-Taboada J, Arenas-Miras M del M, Rodríguez-Granger J (2015) [Spondilodiscitis with medullary and spinal abscess caused by Bacillus Calmette-Guérin (BCG)]. *Rev Chil Infectologia Organo Of Soc Chil Infectologia* 32:706–709. <https://doi.org/10.4067/S0716-10182015000700015>
34. Bornet P, Pujade B, Lacaine F, et al (1989) Tuberculous aneurysm of the femoral artery: a complication of bacille Calmette-Guérin vaccine immunotherapy--a case report. *J Vasc Surg* 10:688–692
35. Nam EY, Na SH, Kim SY, et al (2015) Infected Aortic Aneurysm caused by Mycobacterium bovis after Intravesical Bacillus Calmette-Guérin Treatment for Bladder Cancer. *Infect Chemother* 47:256–260. <https://doi.org/10.3947/ic.2015.47.4.256>
36. Leeman M, Burgers P, Brehm V, van Brussel JP (2017) Psoas abscess after bacille Calmette-Guérin instillations causing iliac artery contained rupture. *J Vasc Surg* 66:1236–1238. <https://doi.org/10.1016/j.jvs.2017.02.038>
37. Sugita Y, Chokyu H, Gotoh A, et al (1995) [Tuberculous spondylitis after intravesical BCG instillation: a case report]. *Nihon Hinyokika Gakkai Zasshi Jpn J Urol* 86:1493–1496
38. Choi S, Jung KH, Son H-J, et al (2018) Diagnostic usefulness of the QuantiFERON-TB gold in-tube test (QFT-GIT) for tuberculous vertebral osteomyelitis. *Infect Dis Lond Engl* 50:346–351. <https://doi.org/10.1080/23744235.2017.1410282>
39. Berbari EF, Kanj SS, Kowalski TJ, et al (2015) 2015 Infectious Diseases Society of America (IDSA) Clinical Practice Guidelines for the Diagnosis and Treatment of Native Vertebral Osteomyelitis in Adults. *Clin Infect Dis Off Publ Infect Dis Soc Am* 61:e26-46. <https://doi.org/10.1093/cid/civ482>
40. Scorpio A, Collins D, Whipple D, et al (1997) Rapid differentiation of bovine and human tubercle bacilli based on a characteristic mutation in the bovine pyrazinamidase gene. *J Clin Microbiol* 35:106–110
41. Batirel A, Erdem H, Sengoz G, et al (2015) The course of spinal tuberculosis (Pott disease): results of the multinational, multicentre Backbone-2 study. *Clin Microbiol Infect Off Publ Eur Soc Clin Microbiol Infect Dis* 21:1008.e9-1008.e18. <https://doi.org/10.1016/j.cmi.2015.07.013>
42. Seo M, Langabeer li JR (2018) Demographic and Survivorship Disparities in Non-muscle-invasive Bladder Cancer in the United States. *J Prev Med Public Health Yebang Uihakhoe Chi* 51:242–247. <https://doi.org/10.3961/jpmph.18.092>
43. Higashi Y, Nakamura S, Kidani K, et al (2018) Mycobacterium bovis-induced Aneurysm after Intravesical Bacillus Calmette-Guérin Therapy: A Case Study and Literature Review. *Intern Med Tokyo Jpn* 57:429–435. <https://doi.org/10.2169/internalmedicine.9102-17>

44. Geerdes-Fenge HF, Stubbe F, Löbermann M, et al (2017) [BCGitis with Involvement of Lung, Liver and Bone Marrow after Immunotherapy of Urothelial Cancer]. *Dtsch Med Wochenschr* 1946 142:1375–1378. <https://doi.org/10.1055/s-0043-115775>
45. Parent M-E, Richer M, Liang P (2018) The first case of bacillus Calmette-Guérin-induced small-vessel central nervous system vasculitis. *Clin Rheumatol*. <https://doi.org/10.1007/s10067-018-4136-9>
46. Gupte A, Matcha A, Lauzardo M (2018) Mycobacterium bovis BCG spinal osteomyelitis in a patient with bladder cancer without a history of BCG instillation. *BMJ Case Rep* 2018:. <https://doi.org/10.1136/bcr-2018-224462>
47. Shields D, Robinson P, Crowley TP (2012) Iliopsoas abscess – A review and update on the literature. *Int J Surg* 10:466–469. <https://doi.org/10.1016/j.ijisu.2012.08.016>
48. Quan Z, Haiming T, Xiaoyao C, et al (2017) Development of one-tube multiplex polymerase chain reaction (PCR) for detecting Mycobacterium bovis. *J Vet Med Sci* 78:1873–1876. <https://doi.org/10.1292/jvms.15-0216>
49. Luo Y, Henning J, O'Donnell MA (2011) Th1 cytokine-secreting recombinant Mycobacterium bovis bacillus Calmette-Guérin and prospective use in immunotherapy of bladder cancer. *Clin Dev Immunol* 2011:728930. <https://doi.org/10.1155/2011/728930>
50. Das J, Ren G, Zhang L, et al (2009) Transforming growth factor beta is dispensable for the molecular orchestration of Th17 cell differentiation. *J Exp Med* 206:2407–2416. <https://doi.org/10.1084/jem.20082286>

Figure 2. (a) MRI Axial T1 with Fat Sat sequence and Gadolinium injection showing epiduritis with partial cauda equina compression, and voluminous right psoas abscesses (b) MRI Sagittal T2 with Fat Sat, showing hypersignal of L1 and L2 vertebral body with a vertebral fracture of L2 and retreat of posterior wall.

Figure 3. (a) 18F-FDG PET-CT showing FDG uptake on L1-L2 vertebral bodies (b) MRI Axial T1-weighted with contrast showed hypersignal of L2 body and a well circumscribed right psoas abscess with Gadolinium enhancement, without epiduritis. (c) MRI Sagittal STIR sequence of the lumbar spine showed hypersignal of L1 and L2 vertebral bodies, with hypersignal in the L1-L2 disc confirming the discitis. White arrow: centro-somatic erosion suggesting a Mycobacterium infection.

Table 1. Clinical, biological, bacteriological and imaging features of 30 reported cases of *M. bovis* BCG vertebral osteomyelitis after instillations of BCG for bladder cancer.

| | Results |
|--|-------------------------|
| <i>Clinical Characteristics</i> | |
| Men, n (%) | 30 (100%) |
| Age (years) mean \pm SD | 73,4 \pm 8,7 |
| Back pain, n (%) | 29/30 (97%) |
| Duration of back pain (months), median \pm IQR | 5 \pm 4 (22/30) |
| Median time (in months \pm IQR) between diagnosis and: | |
| - first instillation of BCG | 22.5 \pm 28.5 (30/30) |
| - last instillation of BCG | 14 \pm 25.5 (30/30) |
| Period of time between last instillation and back pain (in months), median \pm IQR | 5 \pm 11.5 (22/30) |
| Number of instillations, mean \pm SD | 9.4 \pm 4.6 (19/30) |
| Fever, n (%) | 4/20 (20%) |
| Weight loss, n (%) | 12/20 (60%) |
| Night sweats, n (%) | 3/20 (15%) |
| Sensitivo-motor deficit, n (%) | 11/26 (42%) |
| Other infectious locations: | 9/30 (30%) |
| - infectious aneurysm, n (%) | 6/30 (20%) |
| - others | 3/30 (10%) |
| <i>Biological Characteristics</i> | |
| ESR > 20 mm/1 st h, n (%) | 8/14 (57%) |
| High WBC, n (%) | 4/19 (21%) |
| CRP > 5 mg/l, n (%) | 10/13 (77%) |
| <i>Morphological Characteristics</i> | |
| CT scan and/or MRI: | |
| - epidural involvement | 21/30 (70%) |
| - paravertebral | 5/30 (17%) |
| - psoas abscess | 10/30 (33%) |
| <i>Bacteriological Characteristics</i> | |
| Positive bacterial identification/number of procedures: | |
| - abscess puncture | 9/9 (100%) |
| - CT guided biopsy | 15/19 (79%) |
| - surgical biopsy | 13/13 (100%) |
| Positive bacterial identification/number of tests: | |
| - acid-fast bacilli | 11/20 (55%) |
| - cultures | 28/30 (93%) |
| - molecular tests | 14/14 (100%) |
| Histological biopsy: | |
| - presence of granuloma, n (%) | 9/15 (60%) |
| - necrotizing granuloma, n (%) | 5/9 (56%) |
| Antibiotics therapy duration (months), mean \pm SD | 12.1 \pm 7.0 |

SD: standard deviation; IQR: interquartile range; ESR: erythrocyte sedimentation rate; WBC: white blood cell count; CRP: C-reactive protein.

Table 2. Description of 30 cases of *M. bovis* BCG vertebral osteomyelitis after instillations of BCG for bladder cancer.

| Authors | Year of article | Age / Sex | Comorbidities | Period of time (months) between instillation and diagnosis # | | Back pain duration (months) | Number of instillations | Involved Levels | Other BCG infection | CRP (mg/L) | Anti-tuberculosis therapy | Treatment duration | Neurological symptoms on admission | Spine surgery |
|-----------------------|-----------------|-----------|--|--|------|-----------------------------|-------------------------|-----------------|----------------------|------------|---|--------------------|------------------------------------|---------------|
| | | | | First | Last | | | | | | | | | |
| Katz and al. | 1992 | 66 / M | Smoking | 15 | 3 | NR | 12 | L4-L5 | - | NR | INH + RIF | NR | Yes | Yes |
| Stone and al. | 1993 | 80 / M | Coronary artery bypass, Ventricular fibrillation | 5 | 3,5 | 3 | 6 | L5-S1 | Pacemaker | NR | INH + RIF then INH + ETH | 4 | NR | No |
| Fishman and al. | 1993 | 90 / M | - | 16 | 15 | 1 | 6 | T11-T12 | - | NR | INH + RIF + ETH | NR | No | No |
| Civen and al. | 1994 | 81 / M | HBP, Atrial fibrillation, Prostate cancer | 7 | 3,5 | 1 | 8 | T12-L1 | Blood Culture | NR | INH + RIF | 12 | No | Yes |
| Morgan and Iseman | 1996 | 77 / M | Traumatic fracture of T12 | 80 | 8,5 | 6 | 12 | T12-L1 | - | NR | INH + RIF, then quadritherapy and then INH + RIF | 25 (10+9+6) | NR | Yes |
| Rozenblit and al. | 1996 | 76 / M | Myocardial infarction, Hearth failure | 69 | 69 | 1 | NR | L4 | AAA | NR | INH + RIF | NR | No | No |
| LaBerge and al. | 1999 | 75 / M | Coronary artery disease | 22 | 22 | 2 | NR | L3-L4 | AAA | NR | NR | NR | NR | No |
| Aljada and al. | 1999 | 79 / M | Myocardial infarction, Peripheral arterial disease | 30 | 14 | 18 | 20 | L3 | - | NR | Quadritherapy then INH + RIF | 12 | Yes | Yes |
| Abu-Nader and Terrell | 2002 | 76 / M | Benign prostatic hypertrophy, Psoriasis | 84 | 84 | 6 | 6 | T6-T7 | - | NR | Quadritherapy then INH + RIF + ETH | 12 | Yes | No |
| Dahl and al. | 2005 | 69 / M | Appendicitis, colorectal cancer, AAA | 12 | 12 | NR | NR | L3-L4 | AAA | NR | Quadritherapy then INH + RIF | 9 | Yes | Yes |
| Nikaido and al. | 2007 | 86 / M | HBP | 23 | 21 | NR | 8 | T12-L1 | - | 16 | INH + RIF + ETH | NR | No | No |
| Mavrogenis and al | 2009 | 72 / M | Benign prostatic hypertrophy, lumbarthrosis | 120 | 105 | 6 | 12 | L3-L4 | - | NR | Quadritherapy then INH + RIF + ETH | 12 | Yes | Yes |
| Colebatch and Mounce | 2010 | 67 / M | Testicular cancer | 60 | 60 | 36 | | L4-L5 | - | Normal | Quadritherapy then INH + RIF | 7 | NR | No |
| Josephson and al. | 2010 | 75 / M | Mycosis fungoides | 35 | 6 | 6 | 21 | L1-L2 | Cerebral tuberculoma | NR | Quadritherapy, INH + RIF + ETH and then INH + RIF | 12 (2+10) | Yes | No |
| Patel and al. | 2010 | 66 / M | - | 9 | 8 | 5 | 6 | T10-T11 | - | NR | INH + RIF + ETH | 12 | No | No |
| Obaid and al. | 2011 | 67 / M | - | 11 | 9,5 | 5 | 6 | L1-L2 | - | NR | INH + RIF + ETH | 9 | No | Yes |
| Samadian and al. | 2013 | 94 / M | Chronic kidney disease, Prostate cancer | 23 | 23 | 18 | NR | L1-L2 | AAA | Normal | NR | NR | No | No |
| Stahl and al. | 2013 | 60 / M | Clear cell carcinoma | 23 | 23 | NR | NR | T11-T12 | - | NR | NR | NR | No | No |
| Santbergen and al. | 2013 | 58 / M | Myocardial infarction, ischemic stroke et prostatectomy | 39 | 39 | NR | NR | T8-T9 | AAA | 10 | Quadritherapy + moxifloxacin, then RIF + INH + moxifloxacin | 12 | No | No |
| Newman and al. | 2014 | 80 / M | - | 41 | 17 | 5 | NR | T9-T10 | - | NR | INH + RIF + ETH and then INH + RIF | 8 (2+6) | Yes | Yes |
| Lara-Oya and al. | 2015 | 78 / M | Parkinson disease, vertebral osteomyelitis of T11-T12 (<i>S. aureus</i>) | 36 | 36 | NR | NR | T11-T12 | - | 61 | INH + RIF + ETH | 12 | Yes | Yes |
| Dabrowska and al. | 2015 | 67 / M | HBP | 10,5 | 6 | 5 | 9 | T10-T11 | - | Normal | INH + RIF + ETH, then INH + RIF | NR | Yes | Yes |
| Bialecki and al. | 2016 | 66 / M | - | 60 | 60 | NR | NR | T10-T11 | - | 30 | Quadritherapy, then INH + RIF + PZA | NR | Yes | Yes |
| Mackel and al. | 2016 | 64 / M | - | 11 | 6 | 6 | 5 | T11-T12 | - | 40 | INH + ETH + rifabutine + cycloserine + moxifloxacin + capreomycin | 12 | No | Yes |
| Miyazaki and al. | 2016 | 82 / M | - | 16 | 14 | 2 | 8 | T5-T6 | - | 7,5 | INH + RIF + ETH | 6 | No | Yes |
| Seegobin and al. | 2017 | 62 / M | - | 14 | 3 | 1 | 12 | T4-T5 | - | NR | INH + RIF + ETH | 9 | Yes | Yes |
| Kusakabe and al. | 2018 | 76 / M | Cervical laminoplasty, Idiopathic skeletal hyperostosis, HBP, Diabetes | 14 | 12,5 | 5 | 6 | L2-L3 | AAA | | INH + RIF + ETH | NR | No | Yes |
| Case n°1 | - | 65 / M | Weaned smoking, HBP | 12 | 9 | 3 | 6 | L2-L3 | - | 123 | Quadritherapy, then INH + RIF + ETH | 9 | No | Yes |
| Case n°2 | - | 71 / M | Atrial fibrillation | 11 | 7 | 2 | 9 | L1-L2 | - | 70 | Quadritherapy, then INH + RIF + ETH and then INH + RIF | 36 (2+1+33) | No | No |
| Case n°3 | - | 77 / M | Gastric adenocarcinoma, Alcoholism | 82 | 48 | NR | NR | L4-L5 | - | 126 | INH + RIF + ETH | 12 | No | No |

Periods of time are the same when the dates mentioned in the article were not enough detailed; HBP Hyper Blood Pressure; NR: not reported; AAA: abdominal aortic aneurysm; INH: isoniazid; RIF: rifampicin; ETH: ethambutol;

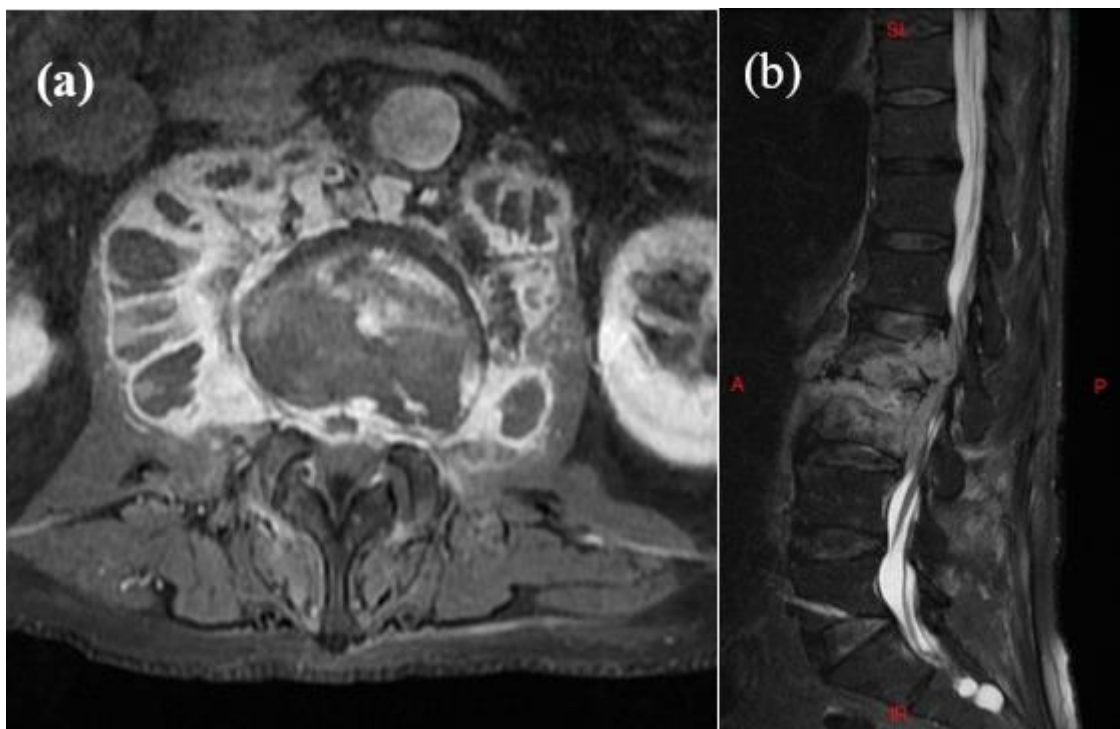


Figure 1. (a) MRI Axial T1 with Fat Sat sequence and Gadolinium injection showing epiduritis with partial cauda equina compression, and voluminous right psoas abscesses (b) MRI Sagittal T2 with Fat Sat, showing hypersignal of L1 and L2 vertebral body with a vertebral fracture of L2 and retreat of posterior wall.

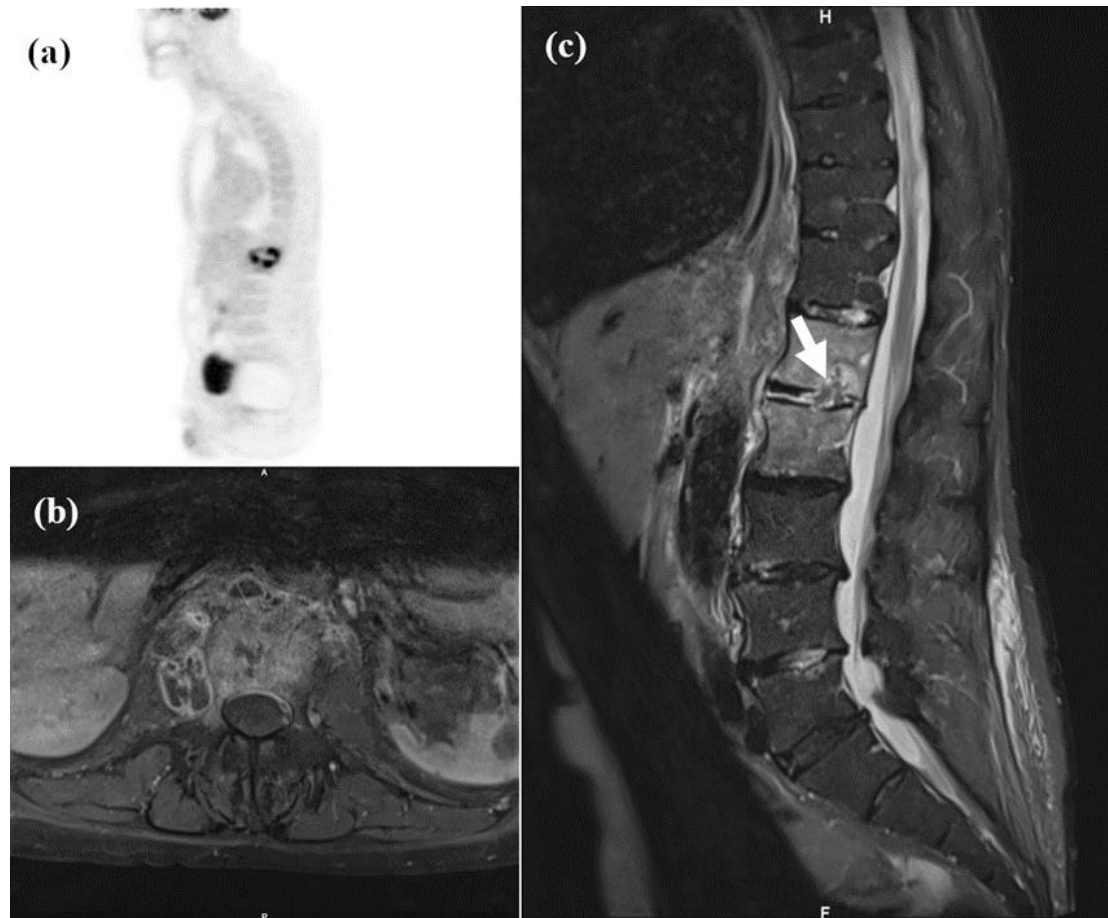


Figure 2. (a) ^{18}F -FDG PET-CT showing FDG uptake on L1-L2 vertebral bodies (b) MRI Axial T1-weighted with contrast showed hypersignal of L2 body and a well circumscribed right psoas abscess with Gadolinium enhancement, without epiduritis. (c) MRI Sagittal STIR sequence of the lumbar spine showed hypersignal of L1 and L2 vertebral bodies, with hypersignal in the L1-L2 disc confirming the discitis. White arrow: centro-somatic erosion suggesting a *Mycobacterium* infection⁶⁰.

Figure 3. Flow chart of literature review

