

## Supplementary information

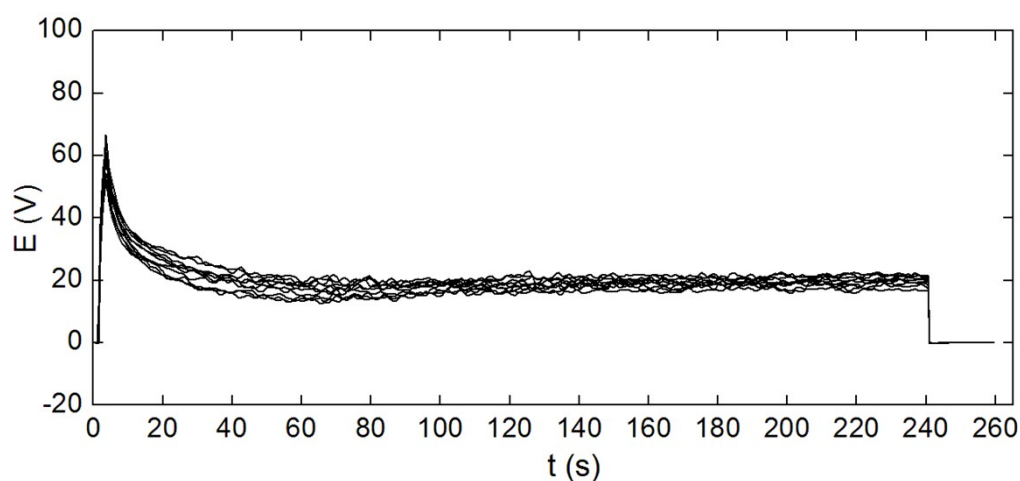
### Enhancing light trapping of macroporous silicon by alkaline etching: application for the fabrication of black Si nanopike arrays

Gabriel Loget,<sup>a\*</sup> Antoine Vacher,<sup>a</sup> Bruno Fabre,<sup>a</sup> Francis Gouttefangeas,<sup>b</sup> Loïc Joanny<sup>b</sup> and Vincent Dorcet<sup>c</sup>

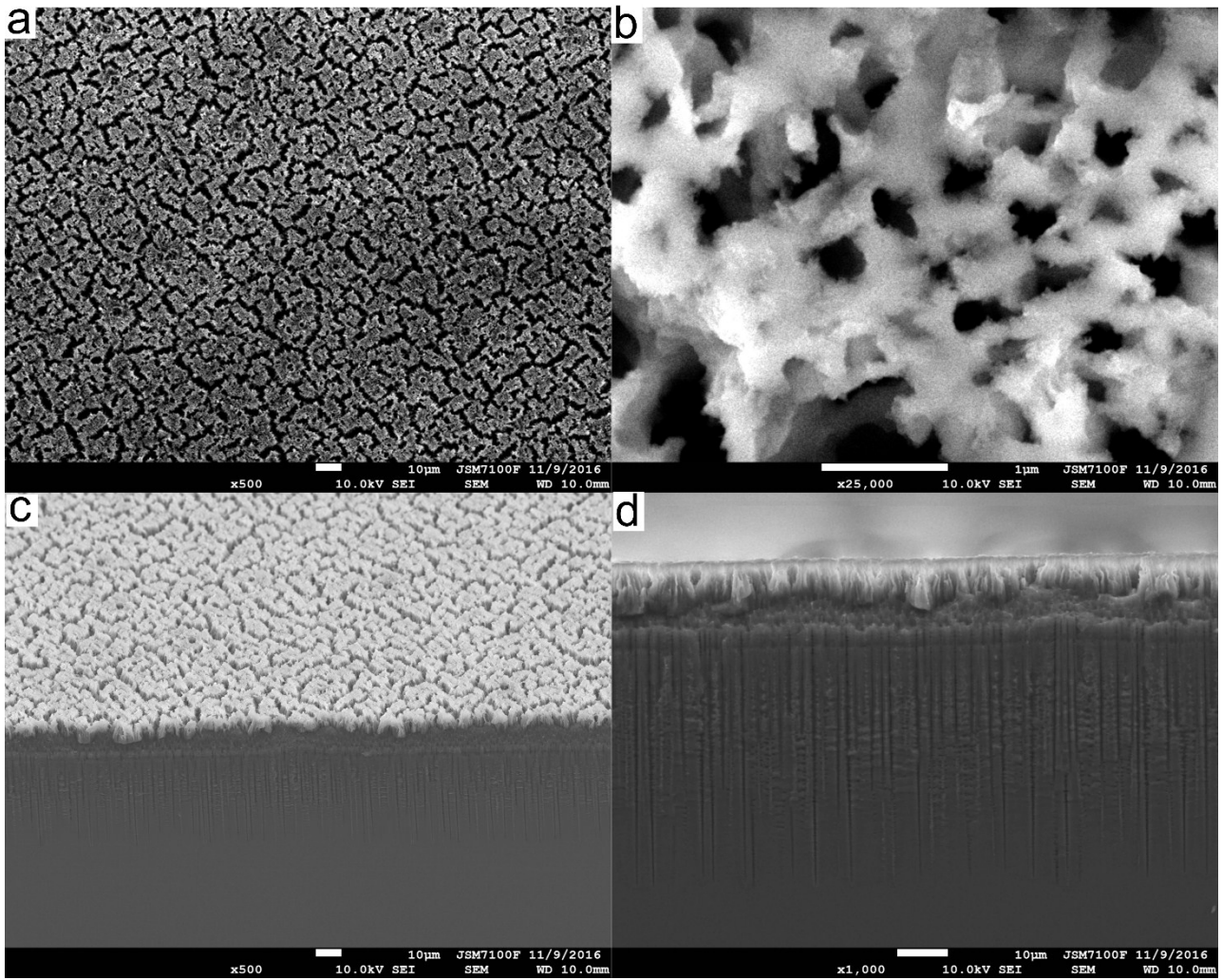
<sup>a</sup> Institut des Sciences Chimiques de Rennes, UMR 6226 CNRS, Matière Condensée et Systèmes Electroactifs (MaCSE)

<sup>b</sup> ScanMAT-Cmeba, Université de Rennes 1, Campus de Beaulieu, 35042 Rennes Cedex, France, and

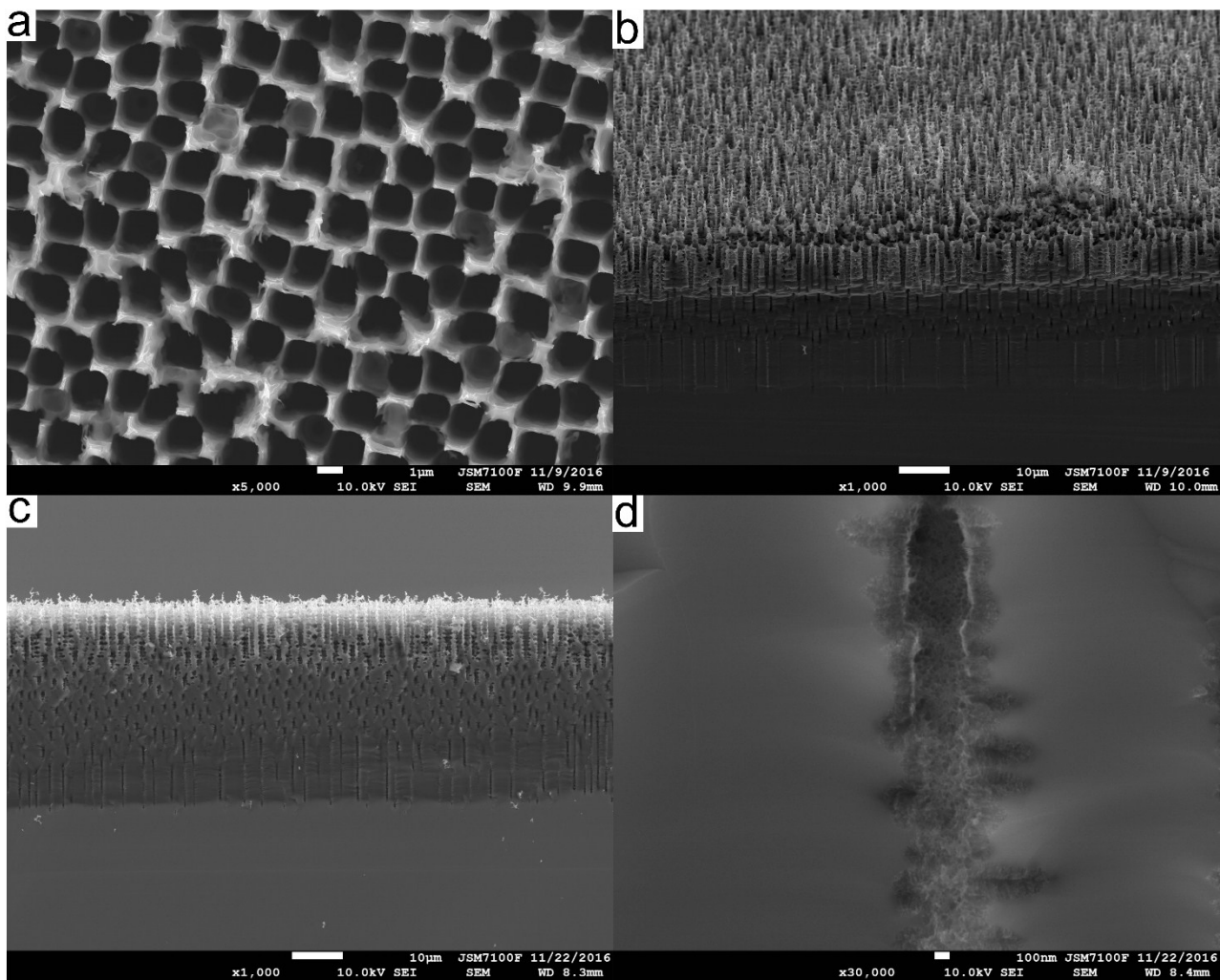
<sup>c</sup> Pôle Ressources Administratives Techniques et Scientifiques (PRATS)



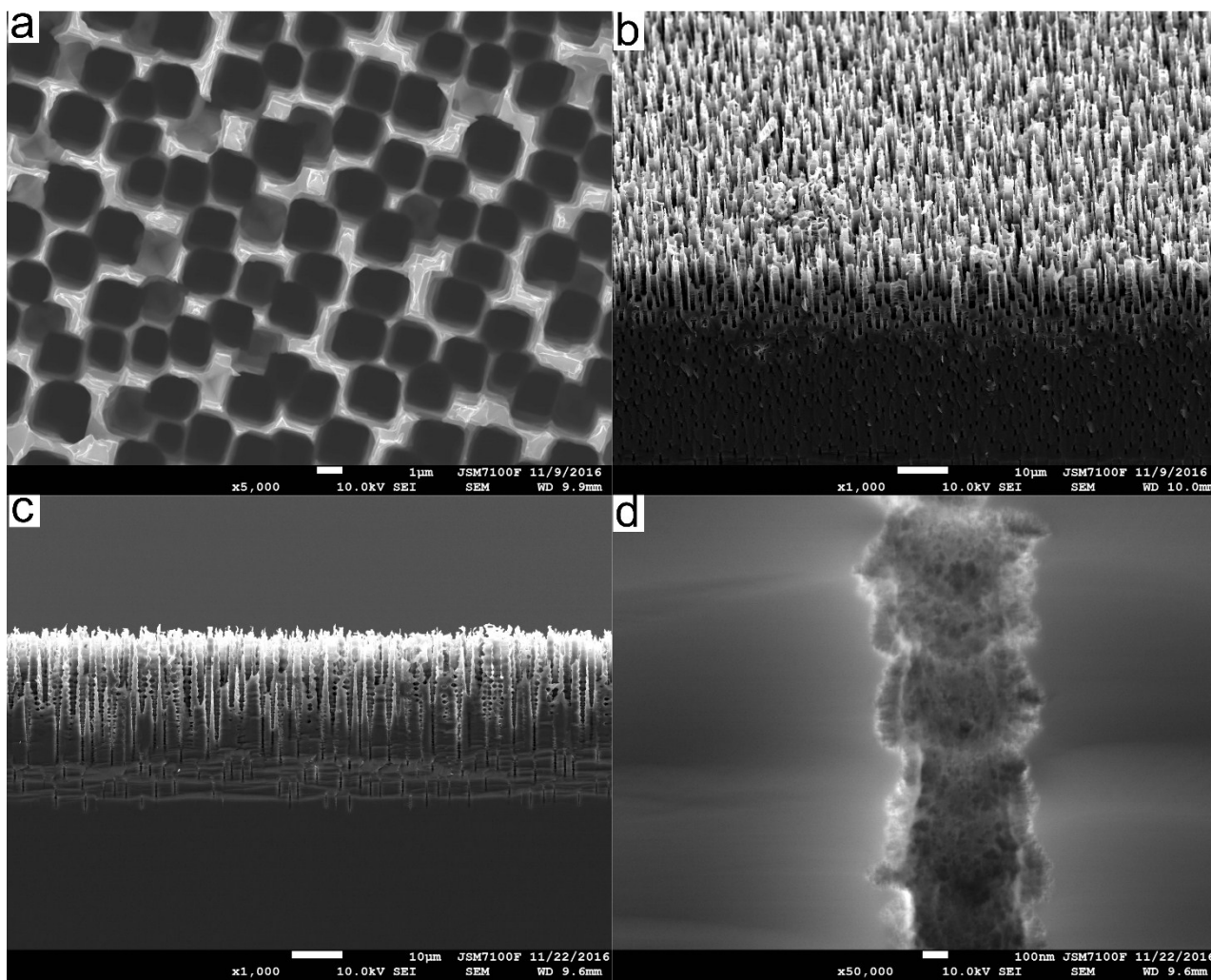
**Figure S1.** Potential-time curves obtained for 10 *n*-Si surfaces etched by PEE galvanostatically in HF/EtOH. The applied current was 100 mA, the surface area was 0.785 cm<sup>2</sup> and the illumination power was 100 mW cm<sup>-2</sup>.



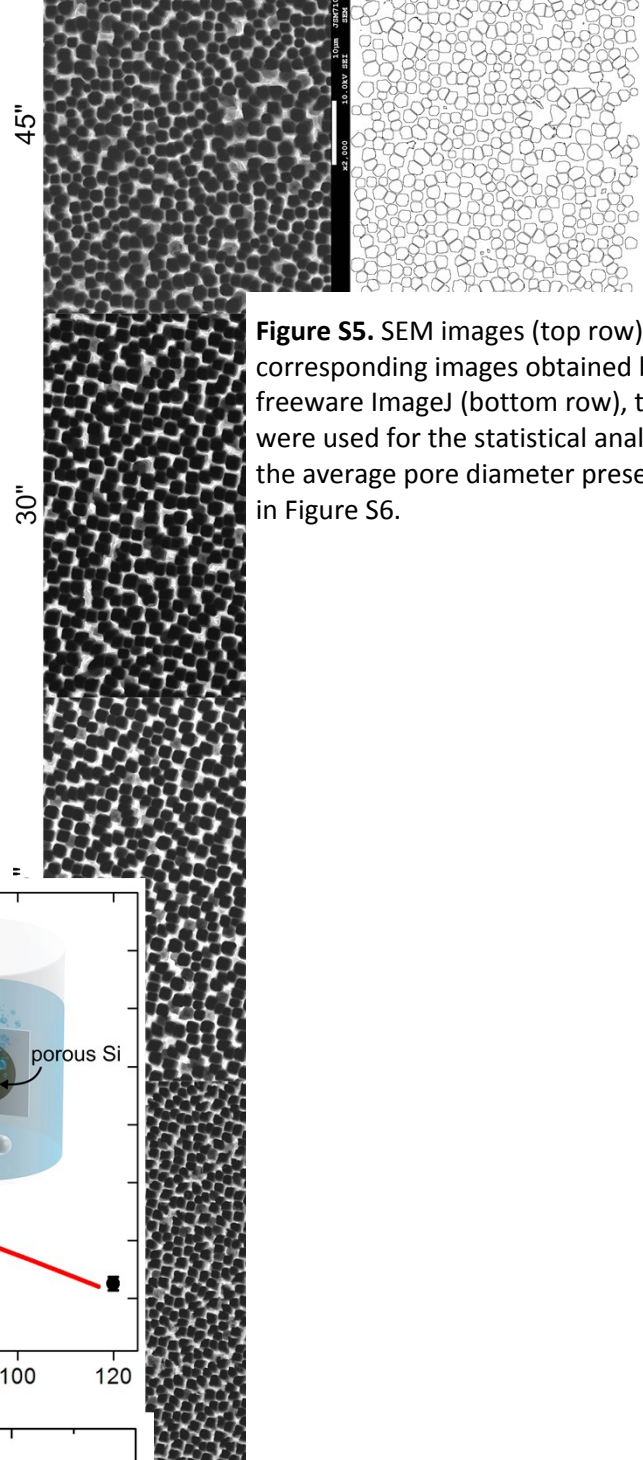
**Figure S2.** SEM images showing different views of the porous Si layer obtained after PEE. a) Low magnification top view. b) High magnification top view. c) Low magnification tilted view. d) Cross-section.



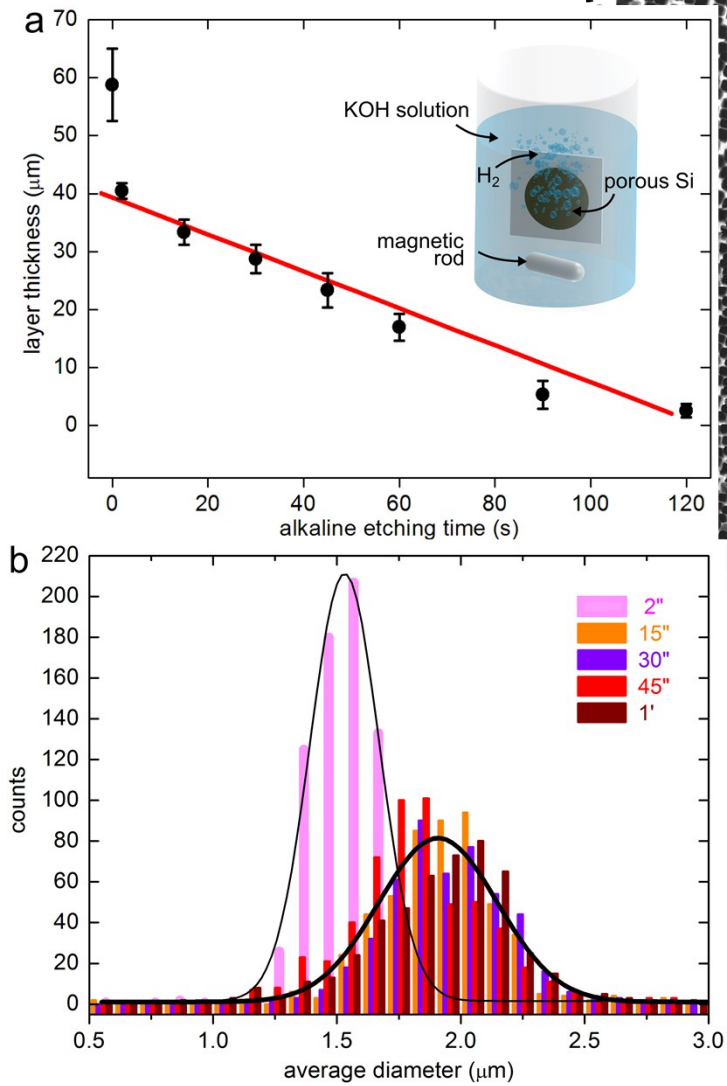
**Figure S3.** SEM images showing different views of the porous Si layer obtained after an AE time of 2 s. a) Top view. b) Tilted view. c) Cross-section. d) High magnification cross-section.



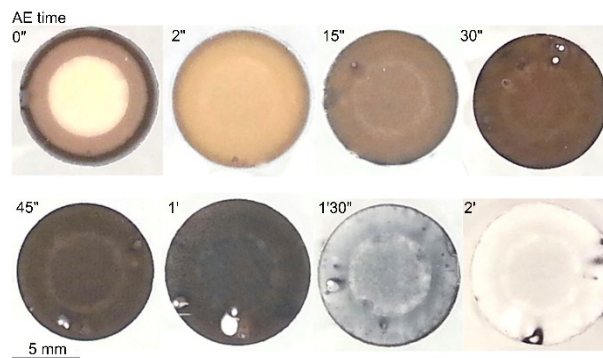
**Figure S4.** SEM images showing different views of the porous Si layer obtained after an AE time of 15 s. a) Top view. b) Tilted view. c) Cross-section. d) High magnification cross-section.



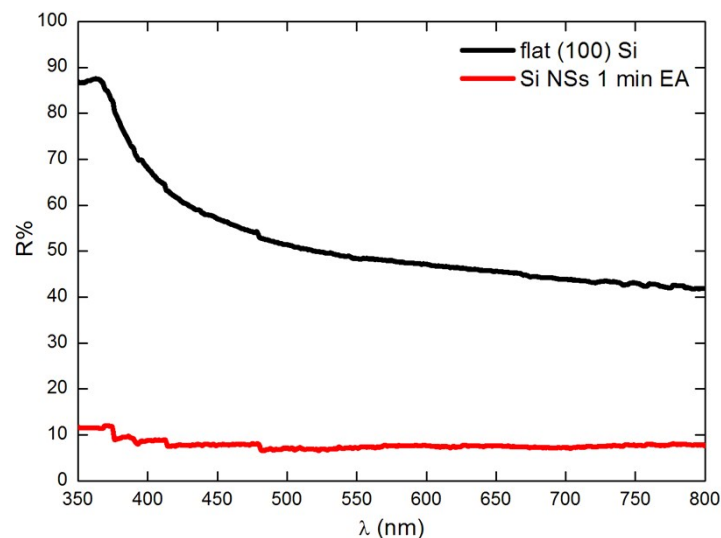
**Figure S5.** SEM images (top row) and corresponding images obtained by the freeware ImageJ (bottom row), that were used for the statistical analyses of the average pore diameter presented in Figure S6.



**Figure S6.** Evolution of the structural parameters as a function of AE time. a) Curves showing the evolution of the porous layer thickness as a function of the AE time (black dots are experimental measurements and the red line is a linear fit of the experimental data without the first point). Inset: Scheme of the setup used for the AE. b) Distributions of the top diameter of the pores as a function of the AE time (See Figure S5 for the top view SEM images used for pore statistics).

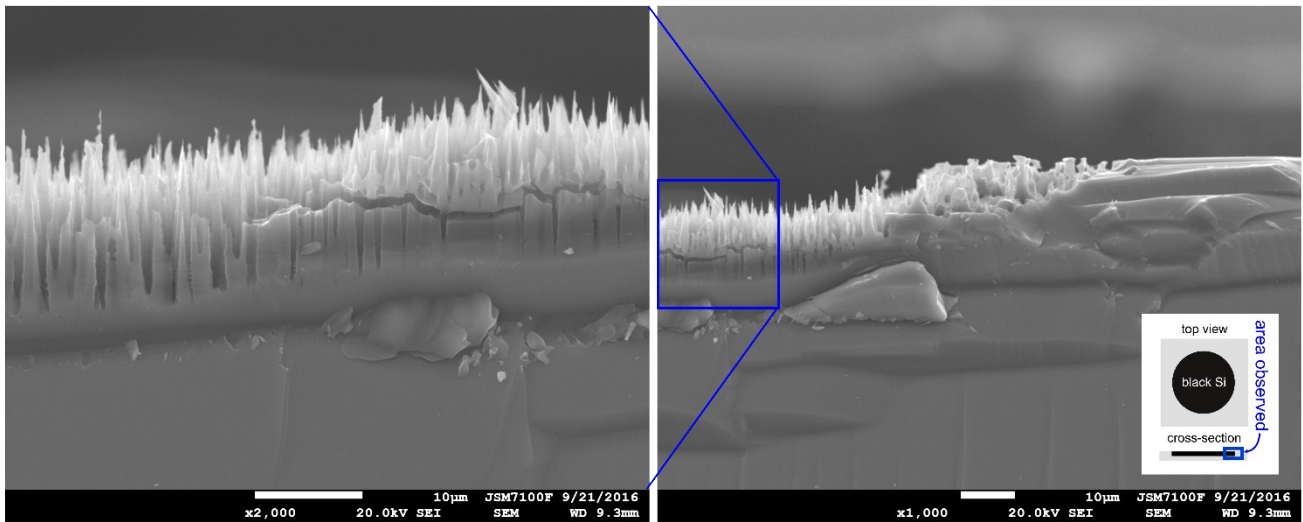


**Figure S7.** Photographs showing the evolution of the Si surface appearance as a function the time of AE.

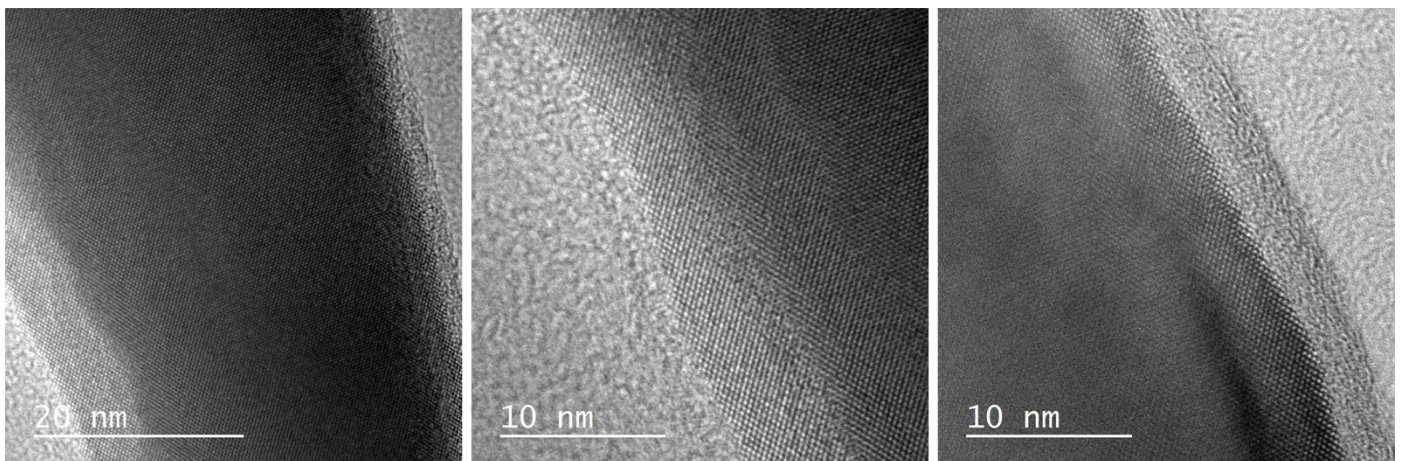


**Figure S8.** Reflectance spectra in the visible range for a planar (100) Si surface and a Si NSpikes surface prepared with an AE time of 1 min. These measurements have been performed with an optical measurement equipment different from that used to obtain spectra shown in Figure 4. Specifically, here a Cary 100 (Varian) spectrophotometer was used, equipped with an integrating sphere (DRA-CA-301, Labsphere) and referenced with a spectralon standard (Labsphere). With this setup, the reflectance decrease was 85 %.

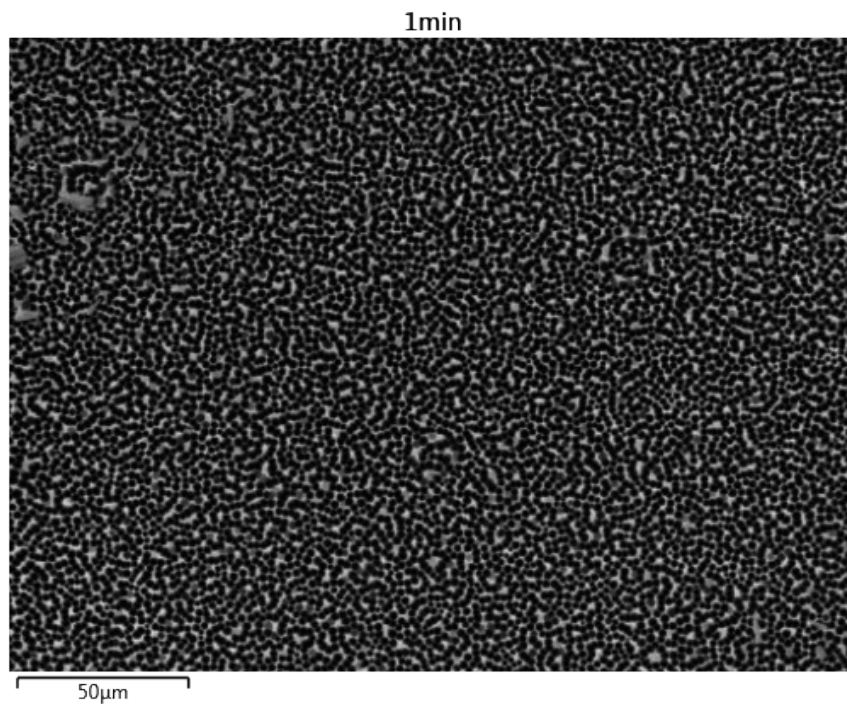




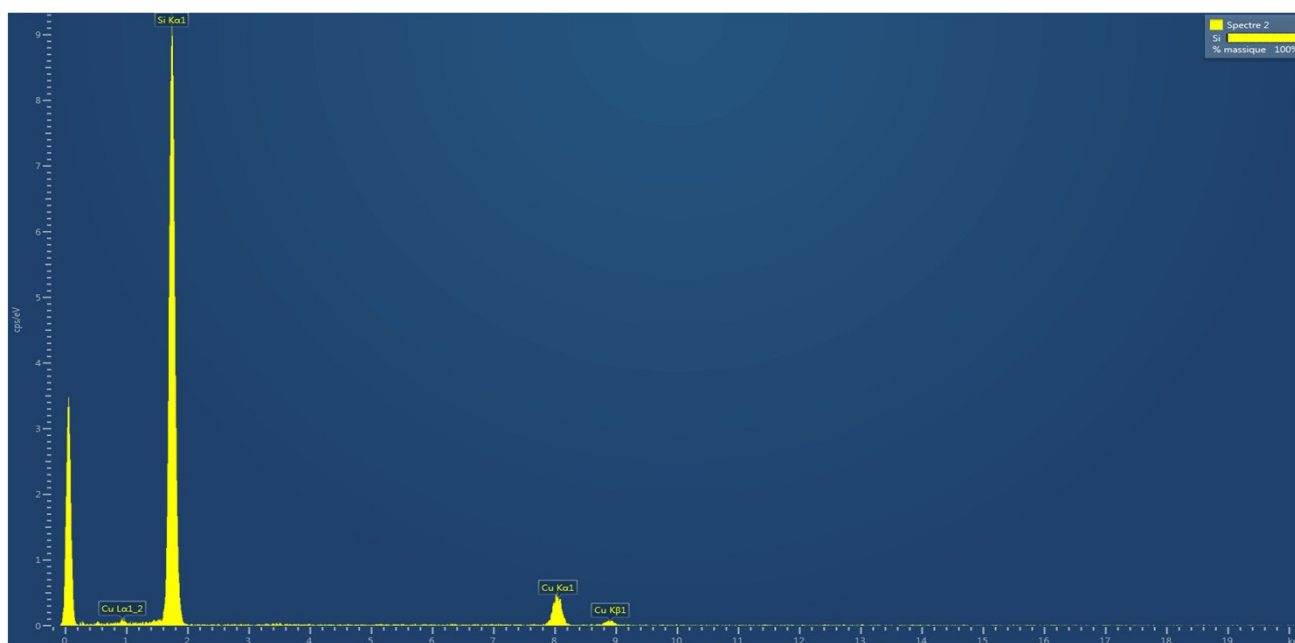
**Figure S9.** SEM images showing the boundary of a black Si NSpike sample obtained for an AE time of 1 min. Inset: schematic representation of the area where these images were obtained.



**Figure S10.** HR-TEM images obtained on individual Si NSpikes.



**Figure S11.** SEM image of the area where the EDS shown in Figure 4f was performed.



**Figure S12.** EDS analysis performed on the single Si NSpike shown in Figure 4d (note that the copper signal originates from the TEM grid).