



**HAL**  
open science

## **Thermoelectric Properties of Highly-Crystallized Ge-Te-Se Glasses Doped with Cu/Bi**

Bhuvanesh Srinivasan, Catherine Boussard-Plédel, Vincent Dorcet, Manisha Samanta, Kanishka Biswas, Robin Lefèvre, Franck Gascoin, François Cheviré, Sylvain Tricot, Michael Reece, et al.

### ► **To cite this version:**

Bhuvanesh Srinivasan, Catherine Boussard-Plédel, Vincent Dorcet, Manisha Samanta, Kanishka Biswas, et al.. Thermoelectric Properties of Highly-Crystallized Ge-Te-Se Glasses Doped with Cu/Bi. *Materials*, 2017, 10 (4), pp.328. <10.3390/ma10040328>. <hal-01504059>

**HAL Id: hal-01504059**

**<https://univ-rennes.hal.science/hal-01504059v1>**

Submitted on 8 Apr 2017

**HAL** is a multi-disciplinary open access archive for the deposit and dissemination of scientific research documents, whether they are published or not. The documents may come from teaching and research institutions in France or abroad, or from public or private research centers.

L'archive ouverte pluridisciplinaire **HAL**, est destinée au dépôt et à la diffusion de documents scientifiques de niveau recherche, publiés ou non, émanant des établissements d'enseignement et de recherche français ou étrangers, des laboratoires publics ou privés.



HAL Authorization

Article

# Thermoelectric Properties of Highly-Crystallized Ge-Te-Se Glasses Doped with Cu/Bi

Bhuvanesh Srinivasan <sup>1</sup>, Catherine Boussard-Pledel <sup>1</sup>, Vincent Dorcet <sup>2</sup>, Manisha Samanta <sup>3</sup>, Kanishka Biswas <sup>3</sup>, Robin Lefèvre <sup>4</sup>, Franck Gascoin <sup>4</sup>, François Chevire <sup>1</sup>, Sylvain Tricot <sup>5</sup>, Michael Reece <sup>6</sup> and Bruno Bureau <sup>1,\*</sup>

<sup>1</sup> Équipe Verres et Céramiques, ISCR CNRS UMR 6226, Université de Rennes 1, Rennes 35042, France; bhuvanesh.srinivasan@univ-rennes1.fr (B.S.); catherine.boussard@univ-rennes1.fr (C.B.-P.); francois.chevire@univ-rennes1.fr (F.C.)

<sup>2</sup> PRATS, ISCR CNRS UMR 6226, Université de Rennes 1, Rennes 35042, France; vincent.dorcet@univ-rennes1.fr

<sup>3</sup> New Chemistry Unit, Jawaharlal Nehru Centre for Advanced Scientific Research, Bangalore 560064, India; manishas@jncasr.ac.in (M.S.); kanishka@jncasr.ac.in (K.B.)

<sup>4</sup> ENSICAEN, UNICAEN, CNRS, IUT-Caen, CRISMAT, Normandie Université, Caen 14050, France; robin.lefevre@ensicaen.fr (R.L.); franck.gascoin@ensicaen.fr (F.G.)

<sup>5</sup> Institut de Physique de Rennes, CNRS UMR 6251-Université de Rennes 1, Rennes 35042, France; sylvain.tricot@univ-rennes1.fr

<sup>6</sup> School of Engineering and Materials Science, Queen Mary University of London, London E1 4NS, UK; m.j.reece@qmul.ac.uk

\* Correspondence: bruno.bureau@univ-rennes1.fr; Tel.: +33-223-236-573; Fax: +33-223-235-611

Academic Editor: Paz Vaqueiro

Received: 10 January 2017; Accepted: 20 March 2017; Published: 23 March 2017

**Abstract:** Chalcogenide semiconducting systems are of growing interest for mid-temperature range (~500 K) thermoelectric applications. In this work, Ge<sub>20</sub>Te<sub>77</sub>Se<sub>3</sub> glasses were intentionally crystallized by doping with Cu and Bi. These effectively-crystallized materials of composition (Ge<sub>20</sub>Te<sub>77</sub>Se<sub>3</sub>)<sub>100-x</sub>M<sub>x</sub> (M = Cu or Bi; x = 5, 10, 15), obtained by vacuum-melting and quenching techniques, were found to have multiple crystalline phases and exhibit increased electrical conductivity due to excess hole concentration. These materials also have ultra-low thermal conductivity, especially the heavily-doped (Ge<sub>20</sub>Te<sub>77</sub>Se<sub>3</sub>)<sub>100-x</sub>Bi<sub>x</sub> (x = 10, 15) samples, which possess lattice thermal conductivity of ~0.7 Wm<sup>-1</sup> K<sup>-1</sup> at 525 K due to the assumable formation of nano-precipitates rich in Bi, which are effective phonon scatterers. Owing to their high metallic behavior, Cu-doped samples did not manifest as low thermal conductivity as Bi-doped samples. The exceptionally low thermal conductivity of the Bi-doped materials did not, alone, significantly enhance the thermoelectric figure of merit, zT. The attempt to improve the thermoelectric properties by crystallizing the chalcogenide glass compositions by excess doping did not yield power factors comparable with the state of the art thermoelectric materials, as these highly electrically conductive crystallized materials could not retain the characteristic high Seebeck coefficient values of semiconducting telluride glasses.

**Keywords:** chalcogenide glasses; heavy doping; complete crystallization; thermal conductivity; power factor; thermoelectrics

## 1. Introduction

Coupled with the severe exploitation of fossil fuels and an ever-increasing demand for a sustainable supply of energy, the hunt for high-performance thermoelectric materials has gained greater momentum over the past decade due to their ability to directly convert thermal and

electrical energy and provide an alternative route for power generation and refrigeration [1–3]. Efficient thermoelectric devices have great potential to convert waste heat from power plants, automotive engines, and industrial processes into fruitful electricity.

A thermoelectric material's potential to convert waste heat into electricity is quantified by a dimensionless figure of merit,  $zT$ , as given by Equation (1):

$$zT = \frac{S^2 \sigma T}{\kappa_{total}} \quad (1)$$

where  $S$ ,  $\sigma$ ,  $T$ , and  $\kappa_{total}$  are the Seebeck coefficient, electrical conductivity, temperature, and total thermal conductivity, respectively. Ideal thermoelectric materials are based on the “phonon glass electron crystal” (PGEC) model [4,5], which means that the materials must concurrently possess low lattice thermal conductivity, as in the case of a glass where phonons are effectively scattered, as well as have high electrical conductivity, like a crystal where there is a high level of electron mobility. The fact that these thermoelectric transport properties are highly interrelated creates a greater challenge in enhancing  $zT$ . Advances in recent times shows that it is feasible to enhance  $zT$  by a number of approaches: quantum confinement of electron charge carriers [6]; synergistic nano-structuring [7–10]; nano-inclusions, which enable acoustic phonon scatterings [11,12]; electron filtering [13]; convergence of electronic band valleys [14–16]; fostering resonant levels by impurities inside the valence band [17]; alloying to create point defects [18]; and complex crystal structures, like skutterudites [19,20], Zintl compounds [21,22], and hetero-structured superlattice thin-films [23].

In the past few years, the idea of thermoelectric glasses has gained some limelight. Telluride glasses, particularly known for their low thermal conductivity of  $0.12 \text{ WK}^{-1} \text{ m}^{-1}$  [24] and simple glass-making process, makes them ideal candidates. An array of compositions of chalcogenide semiconducting glasses and glass-ceramics with low thermal conductivity and unusually high electrical conductivity for a glassy phase have been previously reported [25–27]. Though these kind of semiconducting glasses, especially Cu-doped telluride glasses, exhibit high Seebeck coefficient of around  $600 \mu\text{V/K}$  at room temperatures [25,26,28–32], their high degree of structural disorder causes large electron scatterings that results in low mobility and electrical conductivity, which pulls down the power factor and overall  $zT$  to values that are too low for any relevant large-scale industrial applications.

Though PbTe, an extensively-studied chalcogenide, has proved its mettle in thermoelectric efficiency, the toxic nature of Pb limits their practical applications. The other budding prospect from the semiconducting IV–VI group is the GeTe based alloys. Carrier and phonon engineering of solid-state solutions of GeTe, partially substituted with one/more of these elements like Pb, Sb, Ag, Co, Mn, and Yb has shown promising  $zT > 1$  in the intermediate temperature ranges [33].

Previous reports [34,35] on Te-rich, high-purity  $\text{Ge}_{20}\text{Te}_{77}\text{Se}_3$  ternary glasses focused on optical fibers and far infra-red sensing applications due to their good transparency to long wavelengths and inherently low level of optical losses. These GeTe-based stable glass systems, though extensively studied for optical purposes, are not well explored for thermoelectric applications, especially the crystallized composition of these glasses.

Understanding the fact that pure glass phase alone will not produce materials with high  $zT$  values, in this study, we employed a different approach of intentional crystallization of Ge–Te–Se glass compositions by heavily doping with Cu and Bi, which collapses the glassy network.

Herein, we report an ultra-low lattice thermal conductivity of  $\sim 0.7 \text{ Wm}^{-1} \text{ K}^{-1}$  at 525 K along with increased electrical conductivity due to excess charge carrier concentration and the unfavorably reduced Seebeck co-efficient values in p-type, high-quality, multi-phased crystalline ingots of composition  $(\text{Ge}_{20}\text{Te}_{77}\text{Se}_3)_{100-x}\text{Bi}_x$  ( $x = 10, 15$ ).

## 2. Materials and Methods

### 2.1. Reagents

Ge (Umicore, Olen, Belgium, 5N), Te (JGI, Brussels, Belgium, 5N), Se (Umicore, Olen, Belgium, 5N), Cu (Alfa Aesar, Karlsruhe, Germany, 99.999%), Bi (Strem Chemicals, Newburyport, MA, USA, 99.999%) were used for synthesis without involving any further purification processes.

### 2.2. Synthesis

The samples of  $(\text{Ge}_{20}\text{Te}_{77}\text{Se}_3)_{100-x}\text{M}_x$  ( $\text{M} = \text{Cu}$  or  $\text{Bi}$ ;  $x = 0, 5, 10, 15$ ) were synthesized using the conventional melt quenching method. Appropriate stoichiometric amounts of the starting elements of Ge, Te, Se, Cu, or Bi were introduced in a fused silica tube (diameter  $\sim 10$  mm) that had previously been cleaned with hydrofluoric (HF) acid and distilled water and dried under vacuum. The ampoules were sealed under a vacuum of  $10^{-6}$  Torr, then placed in a rocking furnace and slowly heated up to  $850$  °C over a period of 8 h, then held at that temperature for 12 h before being quenched in water. The tubes were then annealed at  $100$  °C for 3 h. The obtained ingots were cut and polished to required shapes and dimensions for various thermoelectric measurements.

### 2.3. Powder X-ray Diffraction

X-ray diffraction (XRD) patterns were recorded at room temperature in the  $2\theta$  range  $15^\circ$ – $90^\circ$  with a step size of  $0.026^\circ$  and a scan time per step of 400 s using a PANalytical X'Pert Pro diffractometer (PANalytical, Almelo, The Netherlands, Cu-K $\alpha$  radiation,  $\lambda = 1.5418$  Å, PIXcel 1D detector). Data Collector and HighScore Plus software packages were used, respectively, for recording and analyzing the patterns. The Rietveld refinement for quantitative analysis was carried out with the Fullprof program [36].

### 2.4. Hall Measurement

The Hall measurements were carried out at room temperature using a home-made four-point probe setup (Van der Pauw method), where a fixed magnetic field of 0.112 T and DC current of 15 mA was applied. The measurements were done on a square shaped sample of dimension  $\sim 5 \times 5 \times 2$  mm<sup>3</sup>. The carrier concentration ( $n$ ) and mobility ( $\mu$ ) were computed from carrier sheet density ( $n_s$ ), sheet resistance ( $R_s$ ), and Hall Voltage ( $V_H$ ) using the following equations:

$$n_s = \frac{n}{t} = \frac{IB}{e|V_H|} \quad (2)$$

$$\mu = \frac{1}{(en_s R_s)} \quad (3)$$

where  $e$ ,  $B$ ,  $I$ , and  $t$  are the charge of the electron, magnetic field, current, and thickness of the sample respectively.

Values of carrier density obtained were robust with an error of less than 2%.

### 2.5. Electrical and Thermal Transport

The electrical conductivity and Seebeck coefficients were measured simultaneously from room temperature to 523 K using a commercial ZEM-3 instrument (ULVAC Co. Ltd., Kanagawa, Japan), under partial pressure of helium. The measurements were made on parallelepiped-shaped samples of dimensions  $\sim 10 \times 2 \times 2$  mm<sup>3</sup>.

Thermal diffusivity,  $D$ , was directly measured from room temperature to 523 K using the laser flash diffusivity method (LFA 457, Netzch Co. Ltd., Selb, Germany). Disc-shaped samples of 10 mm diameter and  $\sim 2$  mm thickness were used for the measurements. The temperature-dependent heat capacity,  $C_p$ , was derived using a standard sample (pyroceram) in LFA-457, which is in good agreement with the Dulong–Petit  $C_p$  value. The total thermal conductivity,  $\kappa_{total}$  was calculated using the Equation (4):

$$\kappa_{total} = DC_p\rho \quad (4)$$

where  $\rho$  is the density of the sample. The density of the discs were measured using Archimedes' principle.

The uncertainty for the measurement of electrical conductivity is ~3%, Seebeck coefficient is ~5%, and thermal conductivity is ~7%.

### 2.6. Microscopic Analysis

Scanning electron microscopy (SEM) and energy dispersive X-ray spectroscopy (EDX, Oxford Instruments, Oxfordshire, UK) analysis were performed using a JEOL JSM 7100F microscope (JEOL, Tokyo, Japan) on polished bulk surface of the samples. Transmission electron microscopy (TEM) investigations were carried out (HRTEM, JEOL 2100F, JEOL) on electron-transparent samples that were prepared by polishing, dimpling, and ion beam milling.

## 3. Results and Discussion

The batch of samples of compositions  $(\text{Ge}_{20}\text{Te}_{77}\text{Se}_3)_{100-x}\text{M}_x$  ( $\text{M} = \text{Cu}$  or  $\text{Bi}$ ;  $x = 0, 5, 10, 15$ ) that were prepared by vacuum sealed-tube melt quenching technique are denoted as in Table 1.

**Table 1.** Sample compositions and their notations.

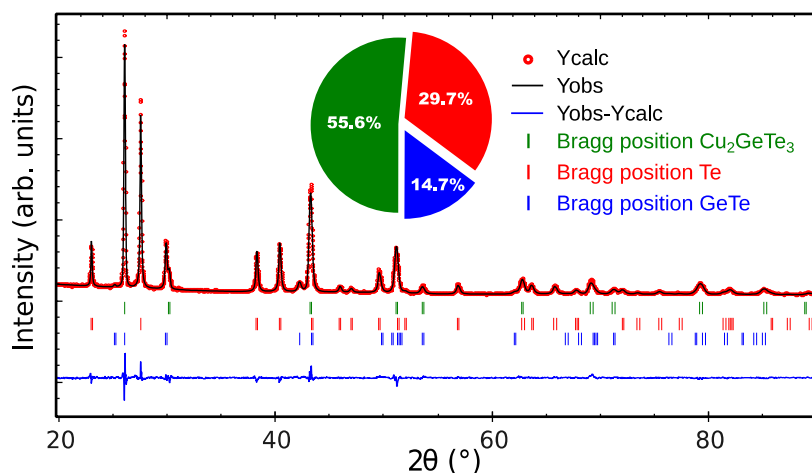
M	X	Sample	Representation
Cu	0	$\text{Ge}_{20}\text{Te}_{77}\text{Se}_3$	GTS
	5	$(\text{Ge}_{20}\text{Te}_{77}\text{Se}_3)_{95}\text{Cu}_5$	GTS-Cu05
	10	$(\text{Ge}_{20}\text{Te}_{77}\text{Se}_3)_{90}\text{Cu}_{10}$	GTS-Cu10
	15	$(\text{Ge}_{20}\text{Te}_{77}\text{Se}_3)_{85}\text{Cu}_{15}$	GTS-Cu15
Bi	5	$(\text{Ge}_{20}\text{Te}_{77}\text{Se}_3)_{95}\text{Bi}_5$	GTS-Bi05
	10	$(\text{Ge}_{20}\text{Te}_{77}\text{Se}_3)_{90}\text{Bi}_{10}$	GTS-Bi10
	15	$(\text{Ge}_{20}\text{Te}_{77}\text{Se}_3)_{85}\text{Bi}_{15}$	GTS-Bi15

The samples GTS and GTS-Cu05 were found to be stable glasses ( $\Delta T \sim 100$  K), while GTS-Cu10 was found to be a partially crystallized glass. The electrical conductivities of these samples were extremely low, so they are not presented in this article (please refer to Supplementary Information, Figures S1 and S2 for information regarding these glassy samples). It is worth noting that the glassy network in GTS is being completely destroyed with addition of more than 10 at % Cu and 5 at % of Bi. The paper focusses only on the thermoelectric-related properties of the completely-crystallized compositions of GTS-Cu15, GTS-Bi05, GTS-Bi10, and GTS-Bi15.

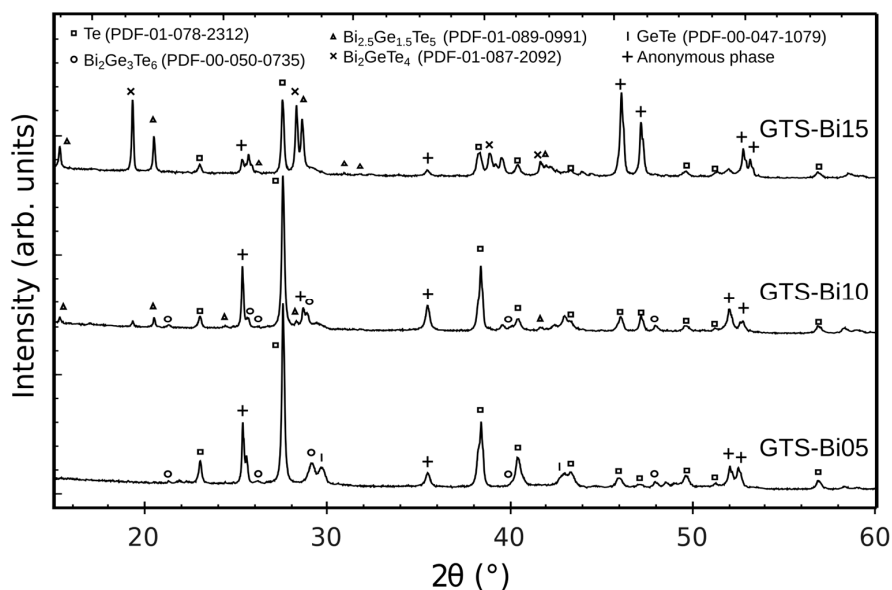
Powder X-ray diffraction (PXRD) results for GTS-Cu15 (Figure 1) show that the samples were well crystallized and three major phases exists, namely  $\text{Cu}_2\text{GeTe}_3$ , Te and GeTe. The peaks for  $\text{Cu}_2\text{GeTe}_3$  phase were indexed based on a cubic blende-type structure with  $F\bar{4}3m$  space group ( $n^\circ 216$ ) [37], considering Cu and Ge atoms sharing the same lattice position without any cation ordering, while the Te and GeTe peaks were indexed based on the trigonal structure with the  $P3_121$  space group ( $n^\circ 152$ ) and rhombohedral structure with  $R3m$  ( $n^\circ 160$ ) space group, respectively. The weight ratios of these phases indicated in the inset pie-chart of Figure 1 shows that  $\text{Cu}_2\text{GeTe}_3$  as the main phase in GTS-Cu15 sample. Refinement details are summarized in supplementary material (Supplementary Information, Table S1).

PXRD analyses performed on Bi-doped GTS samples are represented in Figure 2, show that all samples contain a bulk proportion of crystalline Te phase (PDF#078-2312, space group  $P3_121$ ,  $n^\circ 152$ ) and various Bi-containing phases depending on the initial experimental composition. For instance, GTS-Bi05 contains  $\text{Bi}_2\text{Ge}_3\text{Te}_6$  phase (PDF#050-0735, space group  $R3m$ ,  $n^\circ 160$ ), GTS-Bi10 contains small amounts of  $\text{Bi}_2\text{Ge}_3\text{Te}_6$  and  $\text{Bi}_{2.5}\text{Ge}_{1.5}\text{Te}_5$  (PDF#089-0991, space group  $P\bar{3}m1$ ,  $n^\circ 164$ ) phases,

while increasing the Bi content favors the crystallization of Bi-rich Bi–Ge–Te phases, as GTS-Bi15 exhibits a much larger contents of  $\text{Bi}_{2.5}\text{Ge}_{1.5}\text{Te}_5$  and  $\text{Bi}_2\text{GeTe}_4$  (PDF#087-2092, space group  $R3m$ ,  $n^\circ 166$ ).



**Figure 1.** Rietveld refinement pattern for the GTS-Cu15 sample—observed (black line), calculated (red), and difference (blue line) XRD diffraction profiles. The vertical markers correspond to the position of the Bragg reflections for the different phases. The inset pie-chart illustrates the weight contribution of the different phases in the sample.

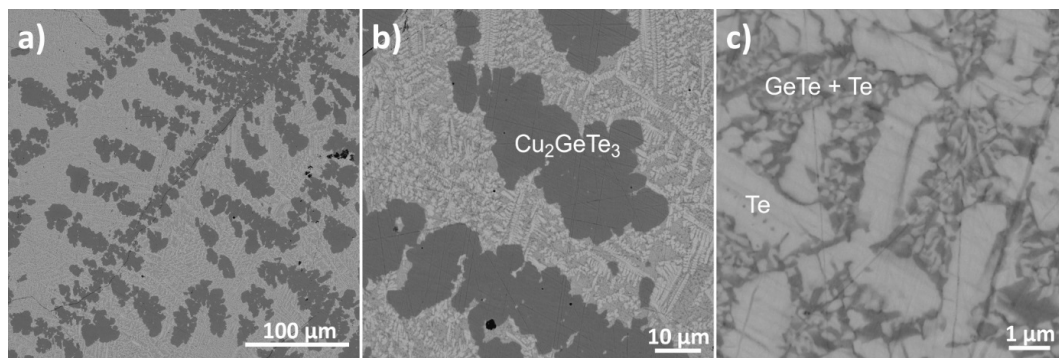


**Figure 2.** PXRD patterns for Bi-doped GTS samples showing peaks arising from multiple crystalline phases.

At this point, it is essential to mention that in Bi-doped samples an anonymous phase that could not be indexed based on the current available crystallographic databases is present in considerable proportion. This could be a new phase of Bi–Ge–Te and the exact composition of this phase was difficult to estimate in SEM-EDX.

The SEM images of GTS-Cu15 with different levels of magnification (Figure 3) show several dark patchy domains (dendritic formation) in the backdrop of brighter regions. EDX analysis found that the dark domains correspond to the main phase of  $\text{Cu}_2\text{GeTe}_3$  while the bright matrix appear to be predominantly Te and GeTe phases, establishing solid agreement with XRD and refinement results.

Figure 3a clearly shows that  $\text{Cu}_2\text{GeTe}_3$  grows as dendrites. In short, Te-rich phases comprising GeTe in minor proportions are embedded in the  $\text{Cu}_2\text{GeTe}_3$  main phase.

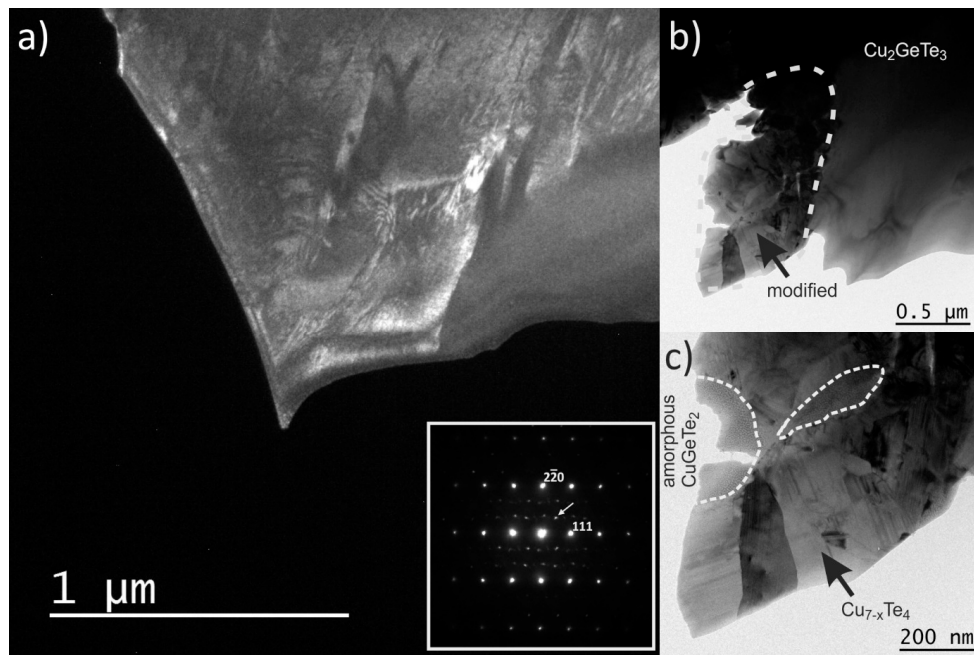


**Figure 3.** SEM images of GTS-Cu15 sample, (a,b) shows two distinct regions, the dark grey region is identified as the  $\text{Cu}_2\text{GeTe}_3$  major phase (dendritic growth) and a brighter region; and (c) the higher magnification image of bright region was found to be a mixture of Te and GeTe phases.

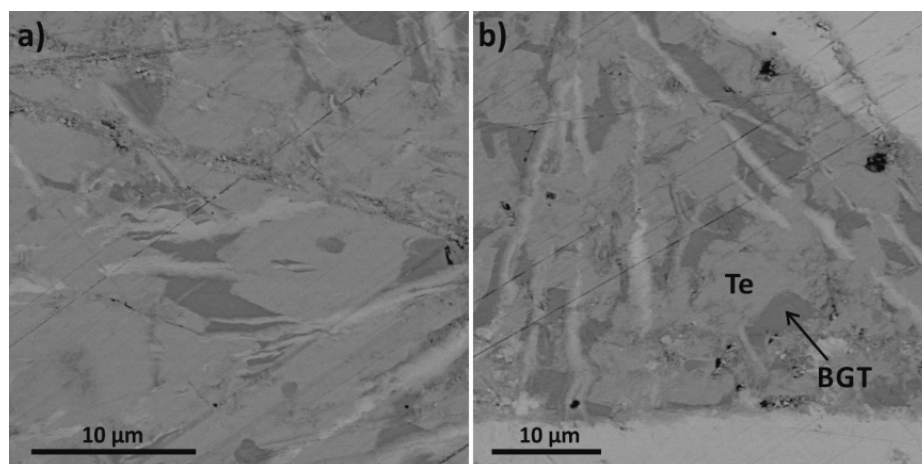
Furthermore, TEM micrographs on these GTS-Cu15 samples, as in Figure 4, show large and well-dispersed crystallized regions of the  $\text{Cu}_2\text{GeTe}_3$  phase. The Figure 4a presents a dark field (DF) image obtained from the reflection pointed at by an arrow in the inset. The inset presents the selected area electron diffraction (SAED) pattern of the crystal where the strong reflection are indexed in the cubic cell of  $\text{Cu}_2\text{GeTe}_3$  and the weak ones could not be indexed. The left part of this crystal phase shows a contrast between white and grey areas, whereas the right part shows a homogeneous grey contrast. Figure 4b shows a more magnified image of a  $\text{Cu}_2\text{GeTe}_3$  crystallite zone in bright field (BF), where a large and homogeneous crystal of  $\text{Cu}_2\text{GeTe}_3$  main phase and a small polycrystalline area (dotted region) are observed. EDX analysis on this dotted region found it to have, on average, the same composition as that of the main phase. Enlargement of this modified surface, Figure 4c, shows a mixture of crystallized and amorphous regions which were found to be  $\text{Cu}_{7-x}\text{Te}_4$  and  $\text{CuGeTe}_2$  phases respectively by electron diffraction and EDX. As these phases were unidentified in PXRD and SEM, they could have evolved during the sample preparation process of ion beam milling; some regions of the main  $\text{Cu}_2\text{GeTe}_3$  phase that were close to the ion milled area were dissociated into crystalline  $\text{Cu}_{7-x}\text{Te}_4$  and amorphous  $\text{CuGeTe}_2$  phases. The presence of stacking faults in the  $\text{Cu}_{7-x}\text{Te}_4$  phase of the modified region are explained pictorially using HRTEM images in the Supplemental Information (Figure S4). Interesting features that could kindle the thermoelectric properties like nanostructured defect layers or mesostructured grain boundaries were non-existent for this heavily Cu-doped GTS-Cu15 sample.

Figure 5 displays SEM images of GTS-Bi15 where two major phases are visible, a pale bright region and another darker region. EDX analyses found the bright region to be Te phase and the grey region to be Bi-Ge-Te phase (BGT) with variable compositions, especially the Bi/Ge ratio. This tentatively matches with the PXRD results as well.

The electrical conductivity as a function of temperature of the GTS samples is presented in Figure 6a. With increasing temperature, the electrical conductivity of all of the samples decreases, which is the archetypal behavior of a degenerate semiconductor [38,39]. Since the Hall voltage is positive in all these samples, holes are the major charge carriers (*p*-type). Results from Hall measurements tabulating the carrier concentration (*n*) and mobility (*μ*), which were calculated using Equations (2) and (3), are presented in Table 2. With an increase in Cu/Bi content, the electrical conductivity increases due to coherent raising of the carrier concentration values and the transformation from a glassy state to a completely crystallized form (i.e., transition from a glassy state of GTS to crystalline GTS-Cu10 or GTS-Bi05 and further).



**Figure 4.** TEM micrographs of GTS-Cu15 (a) Low magnification dark field (DF) image of a  $\text{Cu}_2\text{GeTe}_3$  crystallite domain. Inset shows the SAED pattern of the left part of the crystal showing strong reflections that can be indexed in the cubic cell of  $\text{Cu}_2\text{GeTe}_3$ . The DF image is made with one of these reflections (see arrow); (b) Bright field (BF) image of a  $\text{Cu}_2\text{GeTe}_3$  crystallite phase. The dotted region on the BF image is the one that was apparently modified by ion beam milling; (c) Enlargement of the modified area showing the segregation between crystalline  $\text{Cu}_{7-x}\text{Te}_4$  and an amorphous phase of composition  $\text{CuGeTe}_2$ .



**Figure 5.** (a,b) SEM images of GTS-Bi15 sample showing regions of Te phase (pale bright) and Bi-Ge-Te (BGT) phase (darker regions).

**Table 2.** Hall measurement results for carrier concentration and mobility.

Sample	Carrier Concentration $n$ ( $\text{cm}^{-3}$ )	Mobility, $\mu$ ( $\text{cm}^2 \text{V}^{-1} \text{s}^{-1}$ )
GTS-Cu15	$2.81 \times 10^{20}$	24.25
GTS-Bi05	$1.09 \times 10^{20}$	36.5
GTS-Bi10	$2.38 \times 10^{20}$	16.8
GTS-Bi15	$2.39 \times 10^{20}$	25.57

It is interesting to note the variation of mobility in Bi-doped samples. Despite GTS-Bi10 having twice the carrier concentration values of GTS-Bi05, its carrier charge mobility is reduced by half and this cumulative effect is observed in Figure 6a, where the electrical conductivities of both of these samples are almost the same. It seems like there is a threshold for the increase in conductivity versus Bi content. GTS-Bi15 exhibits much higher conductivity due to high charge carrier density and mobility. It is also seen that Cu doped GTS samples are more electrically conductive compared to the Bi-doped ones, due to high carrier concentration and hole mobility. It is apparent that excess doping of Cu/Bi creates additional vacancies in the GTS network, which is reflected in the enhancement of charge carrier concentration. It is known that, in such a case of doping, an additional carrier scattering mechanism (i.e., alloy scattering) comes into play due to the random distribution of different atoms in the same lattice site [40,41]. This explains the reason for modest mobility in these samples.

Figure 6b shows the temperature dependent Seebeck coefficient (S) results. The Seebeck co-efficient being positive for all of the compositions over the entire temperature range indicates *p*-type charge carriers, which is in good agreement with the Hall measurement results. Interestingly, room temperature S-values marginally increase with dopant level and does not follow the expected trend according to the variation of carrier densities. However, such an anomalous change is difficult to explain. For samples doped with Bi, the S-value increases from ~60  $\mu\text{V}/\text{K}$  at RT to ~90  $\mu\text{V}/\text{K}$  at 523 K, yet these S-values are nowhere close to the state of the art *p*-type thermoelectric materials [9,15,42–45]. Though these experiments to improve the thermoelectric properties by highly crystallizing the glass compositions vastly improves  $\sigma$  values, S-values were drastically reduced because of systematic loss of characteristic telluride glass features, as telluride glasses are known for their exceptionally high Seebeck coefficient values [25,26,28].

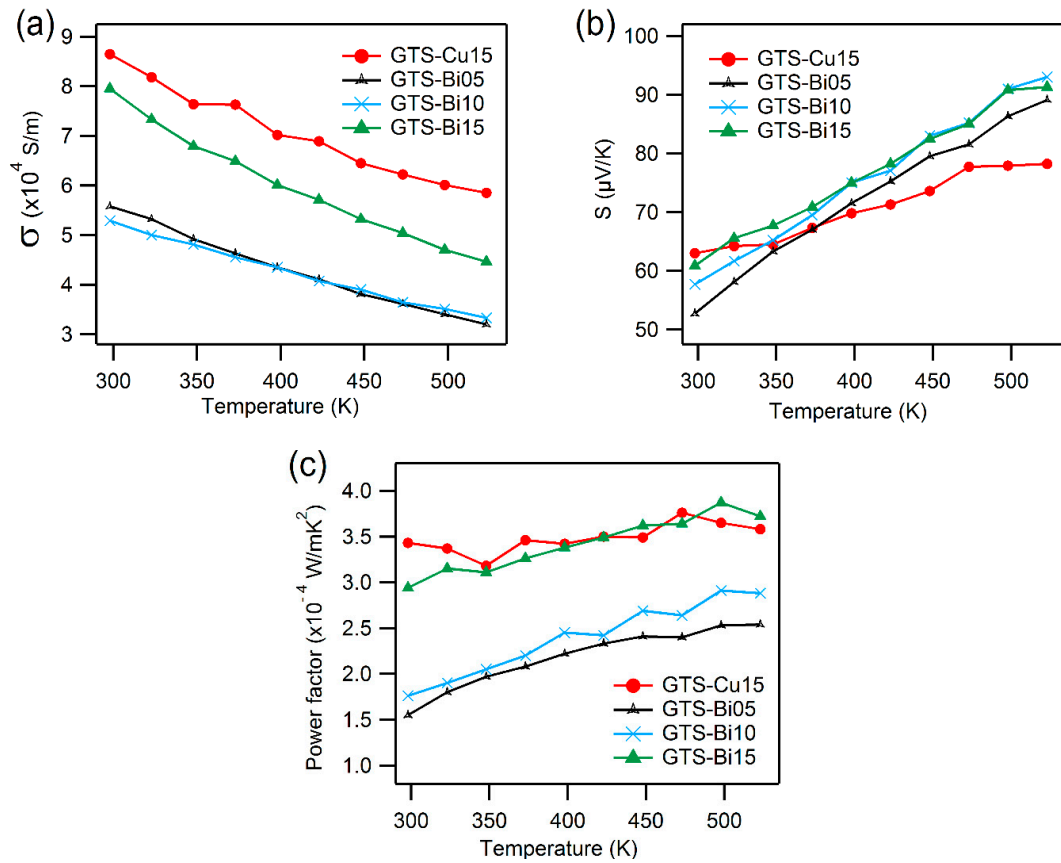
For comparison, it is useful to mention the properties of undoped Ge-Te glass. At room temperature, it possess a high Seebeck coefficient of ~960  $\mu\text{V}/\text{K}$ , but the electrical conductivity is too low ( $\sim 10^{-3}$  S/m) [27–29].

The room-temperature electrical transport properties of some of the phases are presented in Table 3. This gives a general idea on the role of contribution of constituent phases to the properties. For example, XRD results in Figure 2 show more intense Te peaks for GTS-Bi05 and GTS-Bi10, while the Te peaks are less intense for GTS-Bi15. Moreover, GTS-Bi15 has proportionately more Bi-Ge-Te phases, which are far superior in conductivity ( $\sigma > 10^4$  S/m) when compared to the Te phase ( $\sigma \approx 70$  S/m). This reflects in the decreased values of  $\sigma$  for GTS-Bi05 and GTS-Bi10 and relatively higher  $\sigma$  for GTS-Bi15 (Figure 6a). As the physical properties for some of the phases are not yet known, a more cogent explanation could not be presented at this juncture.

**Table 3.** Electrical transport properties of constituent phases (at ~300 K).

Phases	$\sigma$ (S/m)	S ( $\mu\text{V}/\text{K}$ )	References
$\text{Bi}_2\text{GeTe}_4$	$5 \times 10^4$	92	[46]
$\text{Bi}_2\text{Ge}_3\text{Te}_6$	$6 \times 10^4$	32	[46,47]
GeTe	$8 \times 10^5$	25	[33,48]
Te	70	250	This work

The temperature dependence of the thermoelectric power factor, calculated using the electrical conductivity and Seebeck coefficient as  $S^2\sigma$ , is displayed in Figure 6c. GTS-Cu15 and GTS-Bi15 have almost the same power factor values, and comparatively higher than the other samples. The power factor for these heavily-doped samples does not improve much with temperature. Once again, although these systems demonstrate decent levels of electrical conductivity, the mediocre Seebeck coefficient values in all cases reduces the power factor, which is almost one order of magnitude lower than the existing well-known *p*-type thermoelectric materials [9,17,49,50].



**Figure 6.** Electrical transport properties: (a) Electrical conductivity,  $\sigma$ ; (b) Seebeck coefficient,  $S$ ; and (c) thermoelectric power factor ( $S^2\sigma$ ), as a function of temperature.

Figure 7a,b displays the specific heat,  $C_p$ , and thermal diffusivity,  $D$ , as a function of temperature. The measured  $C_p$  values, within the experimental limits, are close to the values expected from Dulong-Petit law, represented in Equation (5):

$$C_p = 3R/M \quad (5)$$

where  $R$  is the gas constant and  $M$  is the molar mass. The temperature dependent total thermal conductivity,  $\kappa_{total}$  derived from  $D$  and  $C_p$  using Equation (4) is presented in Figure 7c. The lattice thermal conductivity ( $\kappa_{latt}$ ) was estimated from  $\kappa_{total}$  by subtracting the electronic contribution ( $\kappa_e$ ) via the Wiedmann-Franz law, as in Equation (6), is shown in Figure 7d:

$$\kappa_e = L\sigma T \quad (6)$$

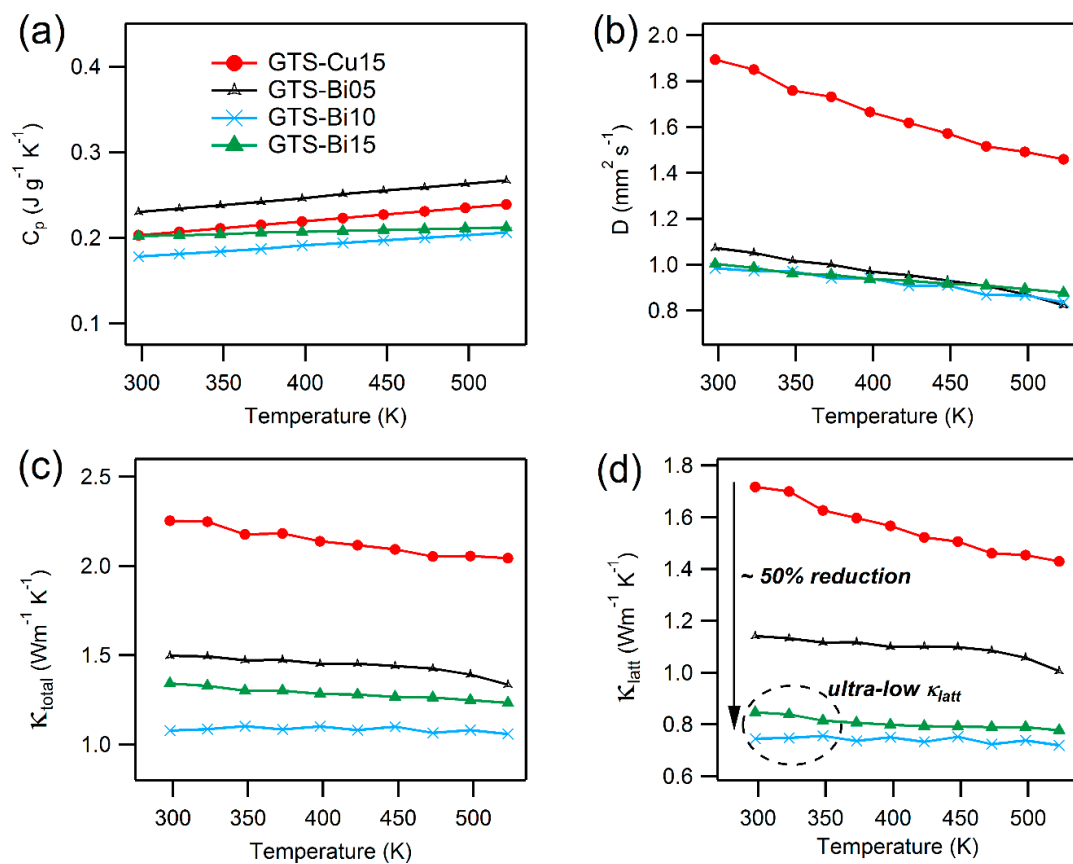
where  $\kappa_e$  is the electronic thermal conductivity and  $L$  is the Lorenz number computed by the condensed version of single parabolic band model with acoustic phonon scattering (SPB-APS), as in Equation (7) [51,52]:

$$L = 1.5 + \exp\left[-\frac{|S|}{116}\right] \quad (7)$$

where the Seebeck coefficient ( $S$ ) is in  $\mu\text{V K}^{-1}$  and Lorenz number ( $L$ ) is in  $10^{-8}$  W $\Omega\text{K}^{-2}$ . Temperature-dependent calculations for  $L$  and  $\kappa_e$  for Cu and Bi doped GTS materials can be found in the Supporting Information (Figures S5 and S6).

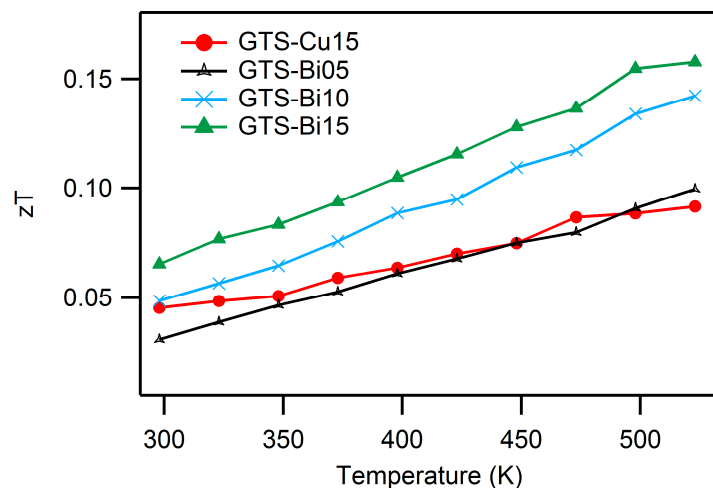
As seen from the Figure 7c,d, the majority of the contribution for thermal conductivity comes from the lattice part.  $\kappa_{total}$  for Bi-doped samples are relatively lower compared to the Cu-doped ones,

due to the more metallic properties of Cu. Even though GTS-Cu15 and GTS-Bi15 possess almost the same power factor values and  $\kappa_e$  values, GTS-Cu15 exhibits a  $\kappa_{total}$  value of  $\sim 2.25 \text{ Wm}^{-1} \text{ K}^{-1}$  at room temperature, whereas GTS-Bi10 and GTS-Bi15 exhibit a  $\kappa_{total}$  value of  $\sim 1.07 \text{ Wm}^{-1} \text{ K}^{-1}$  and  $\sim 1.3 \text{ Wm}^{-1} \text{ K}^{-1}$  at room temperatures, which is about a 50% reduction in comparison to that of the Cu-doped sample. This reduction is primarily because of significantly lower lattice contribution, presumably arising due to nanoprecipitate formation, which would produce effective phonon scattering in the lattices of heavily Bi-doped GTS samples. It has already been reported that Bi substitution in GeTe solid state solutions can result in segregation of Bi-rich nanoprecipitates [39]. In addition, such types of inclusions can cause collective phonon scattering from nanoprecipitates, meso-structured grain boundaries, and other crystallographic defects that could pave the way for reduction in lattice thermal conductivity [7,49,52]. In this work, for heavily-doped GTS-Bi samples, an ultra-low lattice thermal conductivity of  $\sim 0.7 \text{ Wm}^{-1} \text{ K}^{-1}$  was achieved at 523 K.  $\kappa_{total}$  obtained for these doped crystalline materials; especially, the Bi-doped ones are essentially in the range with the  $\kappa_{total}$  values of some of the well-known effective thermoelectric materials [15,42,49,53–57].



**Figure 7.** Temperature-dependent (a) specific heat capacity,  $C_p$ ; (b) thermal diffusivity,  $D$ ; (c) total thermal conductivity,  $\kappa_{total}$ ; and (d) lattice thermal conductivity,  $\kappa_{latt}$  for Cu- and Bi-doped GTS samples. Color code legend applies to all of the plots.

Though these heavily-doped GTS samples possess extremely low thermal conductivity, their  $zT$  values are quite low (Figure 8). It is their adversely low power factor that affects the overall  $zT$  of these materials, proving time and again that optimizing one parameter alone does not necessarily lead to improved efficiency, and an optimized blend of all properties is the indispensable criteria for an impactful thermoelectric device.



**Figure 8.** Dimensionless Figure of merit,  $zT$  for Cu- and Bi-doped GTS samples, showing a maximum  $zT$  of  $\sim 0.16$  for GTS-Bi15 and  $\sim 0.092$  for GTS-Cu15 at 523 K.

#### 4. Conclusions

High-quality ingots of  $(\text{Ge}_{20}\text{Te}_{77}\text{Se}_3)_{100-x}\text{M}_x$  ( $\text{M} = \text{Cu}$  or  $\text{Bi}$ ;  $x = 5, 10, 15$ ) were obtained using a vacuum sealed-tube melt quenching technique. With excess doping of Cu and Bi, the glassy network in pristine  $\text{Ge}_{20}\text{Te}_{77}\text{Se}_3$  was destroyed and highly-crystallized samples with multiple phases were produced. These p-type materials had high electrical conductivity ( $\sim 8 \times 10^4$  S/m) due to increased charge carrier density. Significantly lower total thermal conductivity was exhibited by these crystallized materials. Bi-doped samples demonstrated better thermoelectric features compared to Cu-doped samples. Moreover, TEM micrographs corroborated that heavily Cu-doped samples lack nano/meso-scale architectures. Ultra-low lattice thermal conductivity of  $\sim 0.7 \text{ Wm}^{-1} \text{ K}^{-1}$  was achieved for crystalline samples that were doped with 10 at % and 15 at % Bi, presumably due to Bi-rich nanoprecipitation. The high electrical conductivity coupled with low thermal transport provides the scope for further improvements in overall thermoelectric properties, especially the Seebeck coefficient, by proper optimization of parameters in crystallized glass compositions.

**Supplementary Materials:** The following are available online at [www.mdpi.com/1996-1944/10/4/328/s1](http://www.mdpi.com/1996-1944/10/4/328/s1). Figure S1: DSC curves for glassy samples, Figure S2: PXRD of amorphous glass compositions, Table S1: Rietveld refinement parameters for GTS-Cu15, Figure S3: STEM chemical maps, Figure S4: Stacking faults in  $\text{Cu}_{7-x}\text{Te}_4$ , Figure S5: Lorenz number calculation, Figure S6:  $\kappa_e$  derivation.

**Acknowledgments:** Authors Bhuvanesh Srinivasan and Bruno Bureau would like to thank the funding for the project from European Union's Horizon 2020 research and innovation program under Marie Skłodowska-Curie grant agreement No. 642557 (CoACH-ITN). Julia Courtois is being thanked for her short traineeship. Microscopy platforms (THEMIS and CMEBA) of the University of Rennes 1 are acknowledged as well. Manisha Samanta and Kanishka Biswas acknowledge TRC, DST India and EMR, SERB (EMR/2016/000651) India for the support.

**Author Contributions:** B.S. conceived the project, designed and performed experiments, analyzed the results, and wrote the draft. M.S., K.B., R.L., and F.G. performed thermoelectric measurements as a function of temperature. V.D., F.C., and S.T., performed microscopic, XRD, and Hall measurements, respectively. C.B.P. and M.R. co-supervised the work. B.B. chaired the project, supervised the work, and monitored the progress of activities and networking. All authors contributed to refining the manuscript.

**Conflicts of Interest:** The authors declare no conflict of interest.

#### References

1. LaLonde, A.D.; Pei, Y.; Wang, H.; Snyder, G.J. Lead telluride alloy thermoelectrics. *Mater. Today* **2011**, *14*, 526–532. [CrossRef]
2. Dresselhaus, M.S.; Chen, G.; Tang, M.Y.; Yang, R.G.; Lee, H.; Wang, D.Z.; Ren, Z.F.; Fleurial, J.-P.; Gogna, P. New Directions for Low-Dimensional Thermoelectric Materials. *Adv. Mater.* **2007**, *19*, 1043–1053. [CrossRef]

3. Li, J.-F.; Liu, W.-S.; Zhao, L.-D.; Zhou, M. High-performance nanostructured thermoelectric materials. *NPG Asia Mater.* **2010**, *2*, 152–158. [[CrossRef](#)]
4. Terry, T.T. Thermoelectric Materials, Phenomena, and Applications: A Bird's Eye View. *MRS Bull.* **2006**, *31*, 188–198.
5. Snyder, G.J.; Toberer, E.S. Complex thermoelectric materials. *Nat. Mater.* **2008**, *7*, 105–114. [[PubMed](#)]
6. Hicks, L.D.; Dresselhaus, M.S. Effect of quantum-well structures on the thermoelectric figure of merit. *Phys. Rev. B* **1993**, *47*, 12727–12731. [[CrossRef](#)]
7. Sootsman, J.R.; Kong, H.; Uher, C.; D'Angelo, J.J.; Wu, C.-I.; Hogan, T.P.; Caillat, T.; Kanatzidis, M.G. Large Enhancements in the Thermoelectric Power Factor of Bulk PbTe at High Temperature by Synergistic Nanostructuring. *Angew. Chem. Int. Ed.* **2008**, *47*, 8618–8622. [[CrossRef](#)] [[PubMed](#)]
8. Biswas, K.; He, J.; Blum, I.D.; Wu, C.-I.; Hogan, T.P.; Seidman, D.N.; Dravid, V.P.; Kanatzidis, M.G. High-performance bulk thermoelectrics with all-scale hierarchical architectures. *Nature* **2012**, *489*, 414–418. [[CrossRef](#)] [[PubMed](#)]
9. Poudeu, P.F.P.; D'Angelo, J.; Downey, A.D.; Short, J.L.; Hogan, T.P.; Kanatzidis, M.G. High Thermoelectric Figure of Merit and Nanostructuring in Bulk p-type  $\text{Na}_{1-x}\text{Pb}_m\text{Sb}_y\text{Te}_{m+2}$ . *Angew. Chem. Int. Ed.* **2006**, *45*, 3835–3839. [[CrossRef](#)] [[PubMed](#)]
10. Biswas, K.; He, J.; Zhang, Q.; Wang, G.; Uher, C.; Dravid, V.P.; Kanatzidis, M.G. Strained endotaxial nanostructures with high thermoelectric figure of merit. *Nat. Chem.* **2011**, *3*, 160–166. [[CrossRef](#)] [[PubMed](#)]
11. Cook, B.A.; Kramer, M.J.; Harringa, J.L.; Han, M.-K.; Chung, D.-Y.; Kanatzidis, M.G. Analysis of Nanostructuring in High Figure-of-Merit  $\text{Ag}_{1-x}\text{Pb}_m\text{SbTe}_{2+m}$  Thermoelectric Materials. *Adv. Funct. Mater.* **2009**, *19*, 1254–1259. [[CrossRef](#)]
12. Poudeu, P.F.P.; Guéguen, A.; Wu, C.-I.; Hogan, T.; Kanatzidis, M.G. High Figure of Merit in Nanostructured n-Type  $\text{KPb}_m\text{SbTe}_{m+2}$  Thermoelectric Materials. *Chem. Mater.* **2010**, *22*, 1046–1053. [[CrossRef](#)]
13. Zide, J.M.O.; Vashaee, D.; Bian, Z.X.; Zeng, G.; Bowers, J.E.; Shakouri, A.; Gossard, A.C. Demonstration of electron filtering to increase the Seebeck coefficient in InGaAs/InGaAlAs superlattices. *Phys. Rev. B* **2006**, *74*, 205335. [[CrossRef](#)]
14. Banik, A.; Shenoy, U.S.; Anand, S.; Waghmare, U.V.; Biswas, K. Mg Alloying in SnTe Facilitates Valence Band Convergence and Optimizes Thermoelectric Properties. *Chem. Mater.* **2015**, *27*, 581–587. [[CrossRef](#)]
15. Pei, Y.; Shi, X.; LaLonde, A.; Wang, H.; Chen, L.; Snyder, G.J. Convergence of electronic bands for high performance bulk thermoelectrics. *Nature* **2011**, *473*, 66–69. [[PubMed](#)]
16. Banik, A.; Shenoy, U.S.; Saha, S.; Waghmare, U.V.; Biswas, K. High Power Factor and Enhanced Thermoelectric Performance of  $\text{SnTe-AgInTe}_2$ : Synergistic Effect of Resonance Level and Valence Band Convergence. *J. Am. Chem. Soc.* **2016**, *138*, 13068–13075. [[CrossRef](#)] [[PubMed](#)]
17. Zhang, Q.; Liao, B.; Lan, Y.; Lukas, K.; Liu, W.; Esfarjani, K.; Opeil, C.; Broido, D.; Chen, G.; Ren, Z. High thermoelectric performance by resonant dopant indium in nanostructured SnTe. *Proc. Natl. Acad. Sci. USA* **2013**, *110*, 13261–13266. [[CrossRef](#)] [[PubMed](#)]
18. Carruthers, P. Theory of Thermal Conductivity of Solids at Low Temperatures. *Rev. Mod. Phys.* **1961**, *33*, 92–138. [[CrossRef](#)]
19. Zhao, W.; Wei, P.; Zhang, Q.; Dong, C.; Liu, L.; Tang, X. Enhanced Thermoelectric Performance in Barium and Indium Double-Filled Skutterudite Bulk Materials via Orbital Hybridization Induced by Indium Filler. *J. Am. Chem. Soc.* **2009**, *131*, 3713–3720. [[CrossRef](#)] [[PubMed](#)]
20. Brown, S.R.; Kauzlarich, S.M.; Gascoin, F.; Snyder, G.J.  $\text{Yb}_{14}\text{MnSb}_{11}$ : New High Efficiency Thermoelectric Material for Power Generation. *Chem. Mater.* **2006**, *18*, 1873–1877. [[CrossRef](#)]
21. Toberer, E.S.; May, A.F.; Snyder, G.J. Zintl Chemistry for Designing High Efficiency Thermoelectric Materials. *Chem. Mater.* **2010**, *22*, 624–634. [[CrossRef](#)]
22. Kauzlarich, S.M.; Brown, S.R.; Snyder, G.J. Zintl phases for thermoelectric devices. *Dalton Trans.* **2007**, *21*, 2099–2107. [[CrossRef](#)] [[PubMed](#)]
23. Venkatasubramanian, R.; Siivola, E.; Colpitts, T.; O'Quinn, B. Thin-film thermoelectric devices with high room-temperature figures of merit. *Nature* **2001**, *413*, 597–602. [[CrossRef](#)] [[PubMed](#)]
24. Zhang, S.-N.; He, J.; Zhu, T.-J.; Zhao, X.-B.; Tritt, T.M. Thermal conductivity and specific heat of bulk amorphous chalcogenides  $\text{Ge}_{20}\text{Te}_{80-x}\text{Se}_x$  ( $x = 0, 1, 2, 8$ ). *J. Non-Cryst. Solids* **2009**, *355*, 79–83. [[CrossRef](#)]

25. Lucas, P.; Conseil, C.; Yang, Z.; Hao, Q.; Cui, S.; Boussard-Plédel, C.; Bureau, B.; Gascoin, F.; Caillaud, C.; Gulbiten, O.; et al. Thermoelectric bulk glasses based on the Cu–As–Te–Se system. *J. Mater. Chem. A* **2013**, *1*, 8917–8925. [[CrossRef](#)]
26. Cui, S.; Boussard-plédel, C.; Calvez, L.; Rojas, F.; Chen, K.; Ning, H.; Reece, M.J.; Guizouarn, T.; Bureau, B. Comprehensive study of tellurium based glass ceramics for thermoelectric application. *Adv. Appl. Ceram.* **2015**, *114*, 42–47. [[CrossRef](#)]
27. Zhu, T.J.; Yan, F.; Zhao, X.B.; Zhang, S.N.; Chen, Y.; Yang, S.H. Preparation and thermoelectric properties of bulk in situ nanocomposites with amorphous/nanocrystal hybrid structure. *J. Phys. Appl. Phys.* **2007**, *40*, 6094. [[CrossRef](#)]
28. Gonçalves, A.P.; Lopes, E.B.; Delaizir, G.; Vaney, J.B.; Lenoir, B.; Piarristeguy, A.; Pradel, A.; Monnier, J.; Ochin, P.; Godart, C. Semiconducting glasses: A new class of thermoelectric materials? *J. Solid State Chem.* **2012**, *193*, 26–30. [[CrossRef](#)]
29. Gonçalves, A.P.; Lopes, E.B.; Rouleau, O.; Godart, C. Conducting glasses as new potential thermoelectric materials: The Cu–Ge–Te case. *J. Mater. Chem.* **2010**, *20*, 1516–1521. [[CrossRef](#)]
30. Vaney, J.B.; Delaizir, G.; Alleno, E.; Rouleau, O.; Piarristeguy, A.; Monnier, J.; Godart, C.; Ribes, M.; Escalier, R.; Pradel, A.; et al. A comprehensive study of the crystallization of Cu–As–Te glasses: Microstructure and thermoelectric properties. *J. Mater. Chem. A* **2013**, *1*, 8190–8200. [[CrossRef](#)]
31. Vaney, J.B.; Piarristeguy, A.; Pradel, A.; Alleno, E.; Lenoir, B.; Candolfi, C.; Dauscher, A.; Gonçalves, A.P.; Lopes, E.B.; Delaizir, G.; et al. Thermal stability and thermoelectric properties of  $Cu_xAs_{40-x}Te_{60-y}Se_y$  semiconducting glasses. *J. Solid State Chem.* **2013**, *203*, 212–217. [[CrossRef](#)]
32. Gonçalves, A.P.; Delaizir, G.; Lopes, E.B.; Ferreira, L.M.; Rouleau, O.; Godart, C. Chalcogenide Glasses as Prospective Thermoelectric Materials. *J. Electron. Mater.* **2011**, *40*, 1015–1017. [[CrossRef](#)]
33. Perumal, S.; Roychowdhury, S.; Biswas, K. High performance thermoelectric materials and devices based on GeTe. *J. Mater. Chem. C* **2016**, *4*, 7520–7536. [[CrossRef](#)]
34. Conseil, C.; Shiryaev, V.S.; Cui, S.; Boussard-Plédel, C.; Troles, J.; Velmuzhov, A.P.; Potapov, A.M.; Suchkov, A.I.; Churbanov, M.F.; Bureau, B. Preparation of High Purity Te-Rich Ge-Te-Se Fibers for 5–15  $\mu$ m Infrared Range. *J. Light. Technol.* **2013**, *31*, 1703–1707. [[CrossRef](#)]
35. Wilhelm, A.A.; Boussard-Plédel, C.; Coulombier, Q.; Lucas, J.; Bureau, B.; Lucas, P. Development of Far-Infrared-Transmitting Te Based Glasses Suitable for Carbon Dioxide Detection and Space Optics. *Adv. Mater.* **2007**, *19*, 3796–3800. [[CrossRef](#)]
36. Rodríguez-Carvajal, J. Recent advances in magnetic structure determination by neutron powder diffraction. *Phys. B Condens. Matter* **1993**, *192*, 55–69. [[CrossRef](#)]
37. Palatnik, L.; Komnik, Y.; Koshkin, V.; Belava, E. A group of ternary semiconducting compounds. *Dokl. Akad. Nauk* **1961**, *137*, 68–71.
38. Banik, A.; Vishal, B.; Perumal, S.; Datta, R.; Biswas, K. The origin of low thermal conductivity in  $Sn_{1-x}Sb_xTe$ : Phonon scattering via layered intergrowth nanostructures. *Energy Environ. Sci.* **2016**, *9*, 2011–2019. [[CrossRef](#)]
39. Perumal, S.; Roychowdhury, S.; Biswas, K. Reduction of thermal conductivity through nanostructuring enhances the thermoelectric figure of merit in  $Ge_{1-x}Bi_xTe$ . *Inorg. Chem. Front.* **2016**, *3*, 125–132. [[CrossRef](#)]
40. Wang, H.; LaLonde, A.D.; Pei, Y.; Snyder, G.J. The Criteria for Beneficial Disorder in Thermoelectric Solid Solutions. *Adv. Funct. Mater.* **2013**, *23*, 1586–1596. [[CrossRef](#)]
41. Gelbstein, Y.; Davidow, J. Highly efficient functional  $GexPb_{1-x}Te$  based thermoelectric alloys. *Phys. Chem. Chem. Phys.* **2014**, *16*, 20120–20126. [[CrossRef](#)] [[PubMed](#)]
42. Zhang, Q.; Cao, F.; Liu, W.; Lukas, K.; Yu, B.; Chen, S.; Opeil, C.; Broido, D.; Chen, G.; Ren, Z. Heavy Doping and Band Engineering by Potassium to Improve the Thermoelectric Figure of Merit in p-Type PbTe, PbSe, and  $PbTe_{1-y}Se_y$ . *J. Am. Chem. Soc.* **2012**, *134*, 10031–10038. [[CrossRef](#)] [[PubMed](#)]
43. Jiehe Sui, J.S. Effect of Cu concentration on thermoelectric properties of nanostructured p-type  $MgAg_{0.97-x}Cu_xSb_{0.99}$ . *Acta Mater.* **2015**. [[CrossRef](#)]
44. Yu, B.; Zhang, Q.; Wang, H.; Wang, X.; Wang, H.; Wang, D.; Wang, H.; Snyder, G.J.; Chen, G.; Ren, Z.F. Thermoelectric property studies on thallium-doped lead telluride prepared by ball milling and hot pressing. *J. Appl. Phys.* **2010**, *108*, 016104. [[CrossRef](#)]
45. Ma, Y.; Hao, Q.; Poudel, B.; Lan, Y.; Yu, B.; Wang, D.; Chen, G.; Ren, Z. Enhanced Thermoelectric Figure-of-Merit in p-Type Nanostructured Bismuth Antimony Tellurium Alloys Made from Elemental Chunks. *Nano Lett.* **2008**, *8*, 2580–2584. [[CrossRef](#)] [[PubMed](#)]

46. Kuznetsova, L.A.; Kuznetsov, V.L.; Rowe, D.M. Thermoelectric properties and crystal structure of ternary compounds in the Ge(Sn,Pb)Te–Bi<sub>2</sub>Te<sub>3</sub> systems. *J. Phys. Chem. Solids* **2000**, *61*, 1269–1274. [[CrossRef](#)]
47. Shelimova, L.E.; Karpinsky, O.G.; Kretova, M.A.; Avilov, E.S.; Fleurial, J.P. Crystal structure and thermoelectric properties of the mixed layered compounds of the (GeTe)<sub>m</sub>(Bi<sub>2</sub>Te<sub>3</sub>)<sub>m</sub> homologous series. In Proceedings of the XVI International Conference on Thermoelectrics 1997, Dresden, Germany, 26–29 August 1997; pp. 481–484.
48. Lee, J.K.; Oh, M.W.; Kim, B.S.; Min, B.K.; Lee, H.W.; Park, S.D. Influence of Mn on crystal structure and thermoelectric properties of GeTe compounds. *Electron. Mater. Lett.* **2014**, *10*, 813–817. [[CrossRef](#)]
49. Perumal, S.; Roychowdhury, S.; Negi, D.S.; Datta, R.; Biswas, K. High Thermoelectric Performance and Enhanced Mechanical Stability of p-type Ge<sub>1-x</sub>Sb<sub>x</sub>Te. *Chem. Mater.* **2015**, *27*, 7171–7178.
50. Fahrnbauer, F.; Souchay, D.; Wagner, G.; Oeckler, O. High Thermoelectric Figure of Merit Values of Germanium Antimony Tellurides with Kinetically Stable Cobalt Germanide Precipitates. *J. Am. Chem. Soc.* **2015**, *137*, 12633–12638. [[CrossRef](#)] [[PubMed](#)]
51. Kim, H.-S.; Gibbs, Z.M.; Tang, Y.; Wang, H.; Snyder, G.J. Characterization of Lorenz number with Seebeck coefficient measurement. *APL Mater.* **2015**, *3*, 041506. [[CrossRef](#)]
52. Zhang, L.; Wang, J.; Cheng, Z.; Sun, Q.; Li, Z.; Dou, S. Lead-free SnTe-based thermoelectrics: Enhancement of thermoelectric performance by doping with Gd/Ag. *J. Mater. Chem. A* **2016**, *4*, 7936–7942. [[CrossRef](#)]
53. Inayat, S.B.; Rader, K.R.; Hussain, M.M. Nano-materials Enabled Thermoelectricity from Window Glasses. *Sci. Rep.* **2012**, *2*, 841. [[CrossRef](#)] [[PubMed](#)]
54. Li, Y.; Li, D.; Qin, X.; Yang, X.; Liu, Y.; Zhang, J.; Dou, Y.; Song, C.; Xin, H. Enhanced thermoelectric performance through carrier scattering at heterojunction potentials in BiSbTe based composites with Cu<sub>3</sub>SbSe<sub>4</sub> nano-inclusions. *J. Mater. Chem. C* **2015**, *3*, 7045–7052. [[CrossRef](#)]
55. LaLonde, A.D.; Pei, Y.; Snyder, G.J. Reevaluation of PbTe<sub>1-x</sub>I<sub>x</sub> as high performance n-type thermoelectric material. *Energy Environ. Sci.* **2011**, *4*, 2090–2096. [[CrossRef](#)]
56. Hsu, K.F.; Loo, S.; Guo, F.; Chen, W.; Dyck, J.S.; Uher, C.; Hogan, T.; Polychroniadis, E.K.; Kanatzidis, M.G. Cubic AgPb<sub>m</sub>SbTe<sub>2+m</sub>: Bulk Thermoelectric Materials with High Figure of Merit. *Science* **2004**, *303*, 818–821. [[CrossRef](#)] [[PubMed](#)]
57. Bali, A.; Wang, H.; Snyder, G.J.; Mallik, R.C. Thermoelectric properties of indium doped PbTe<sub>1-y</sub>Se<sub>y</sub> alloys. *J. Appl. Phys.* **2014**, *116*, 033707. [[CrossRef](#)]



© 2017 by the authors. Licensee MDPI, Basel, Switzerland. This article is an open access article distributed under the terms and conditions of the Creative Commons Attribution (CC BY) license (<http://creativecommons.org/licenses/by/4.0/>).