

SUPPORTING INFORMATION

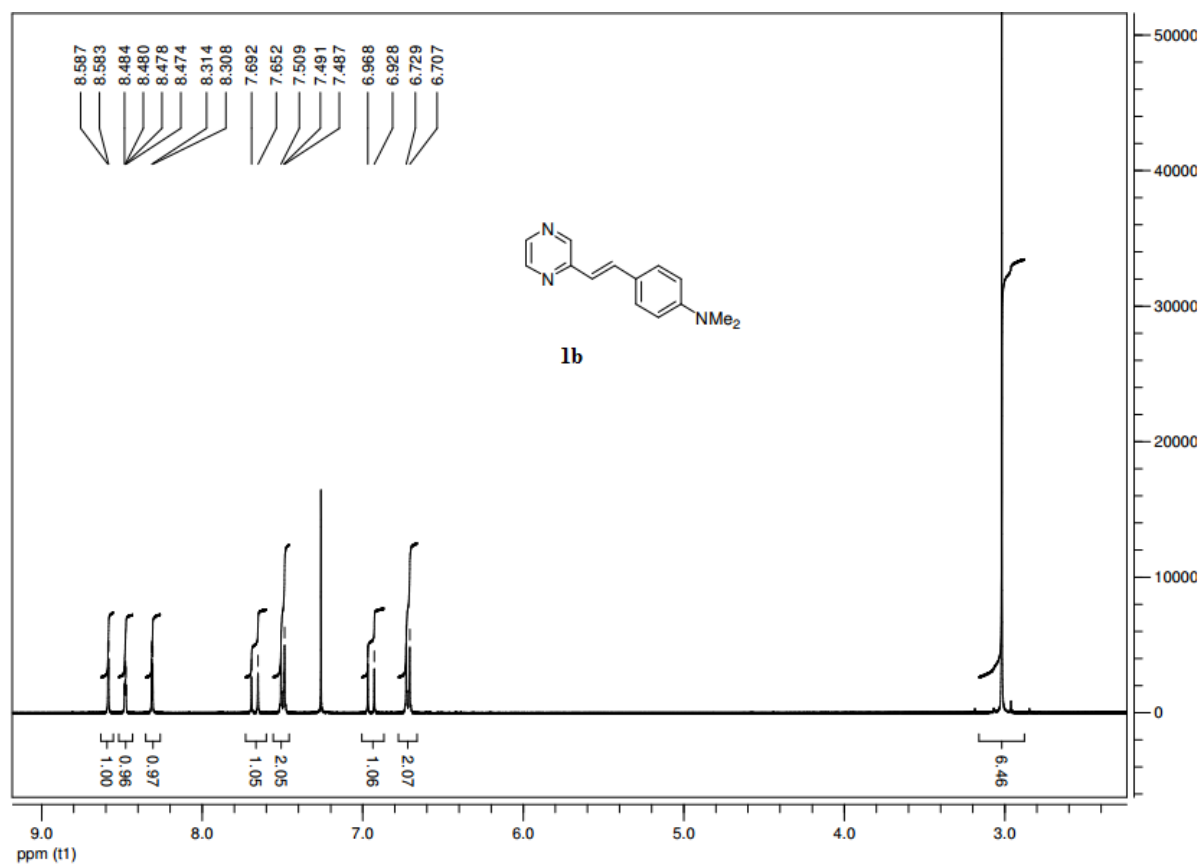
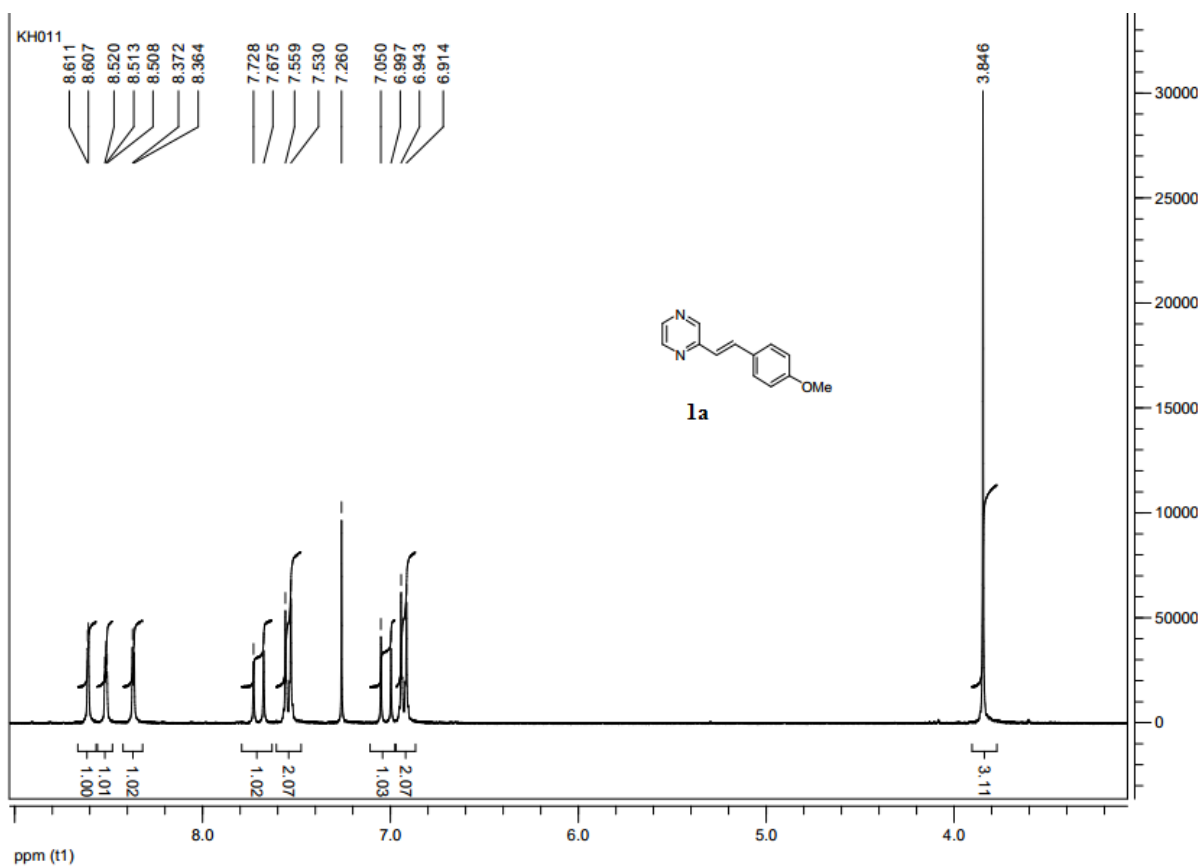
DOI: 10.1002/ejoc.201601204

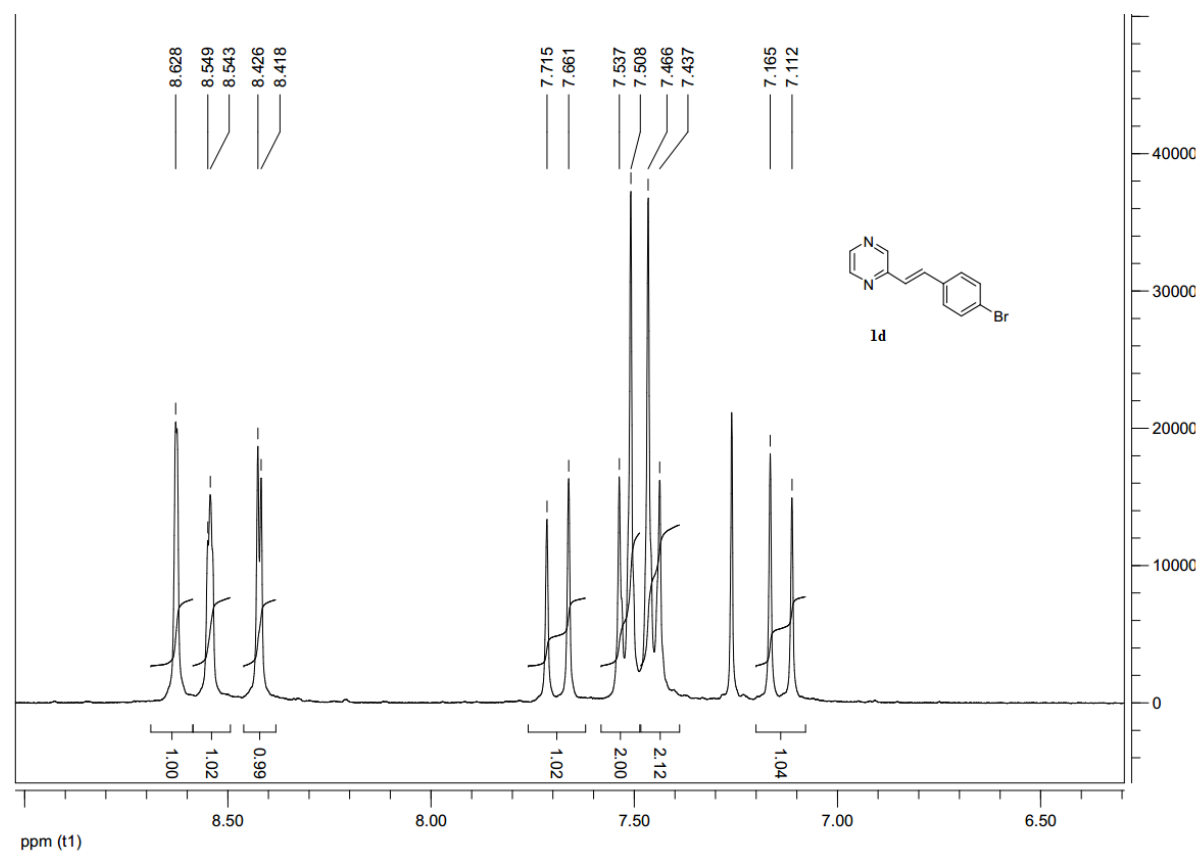
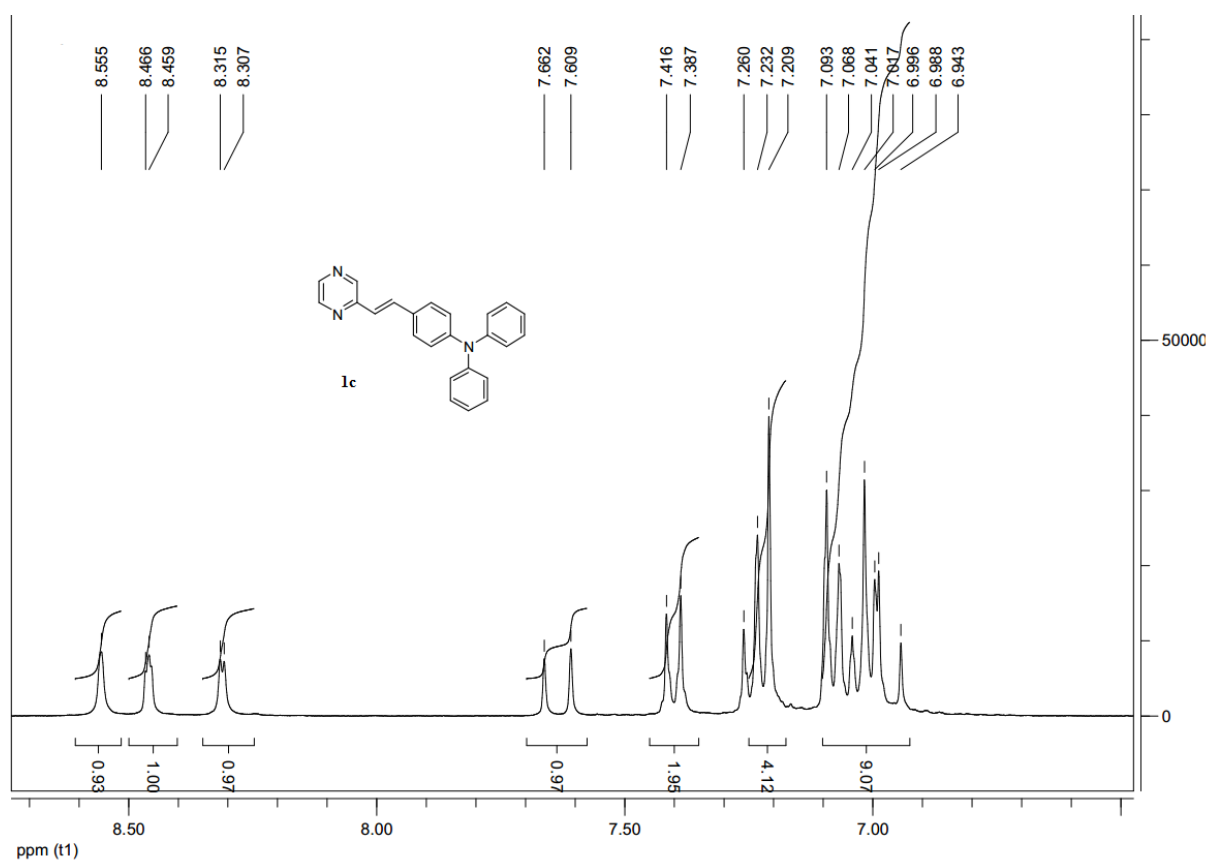
Title: Synthesis and Photophysical Properties of a Series of Pyrazine-Based Push–Pull Chromophores

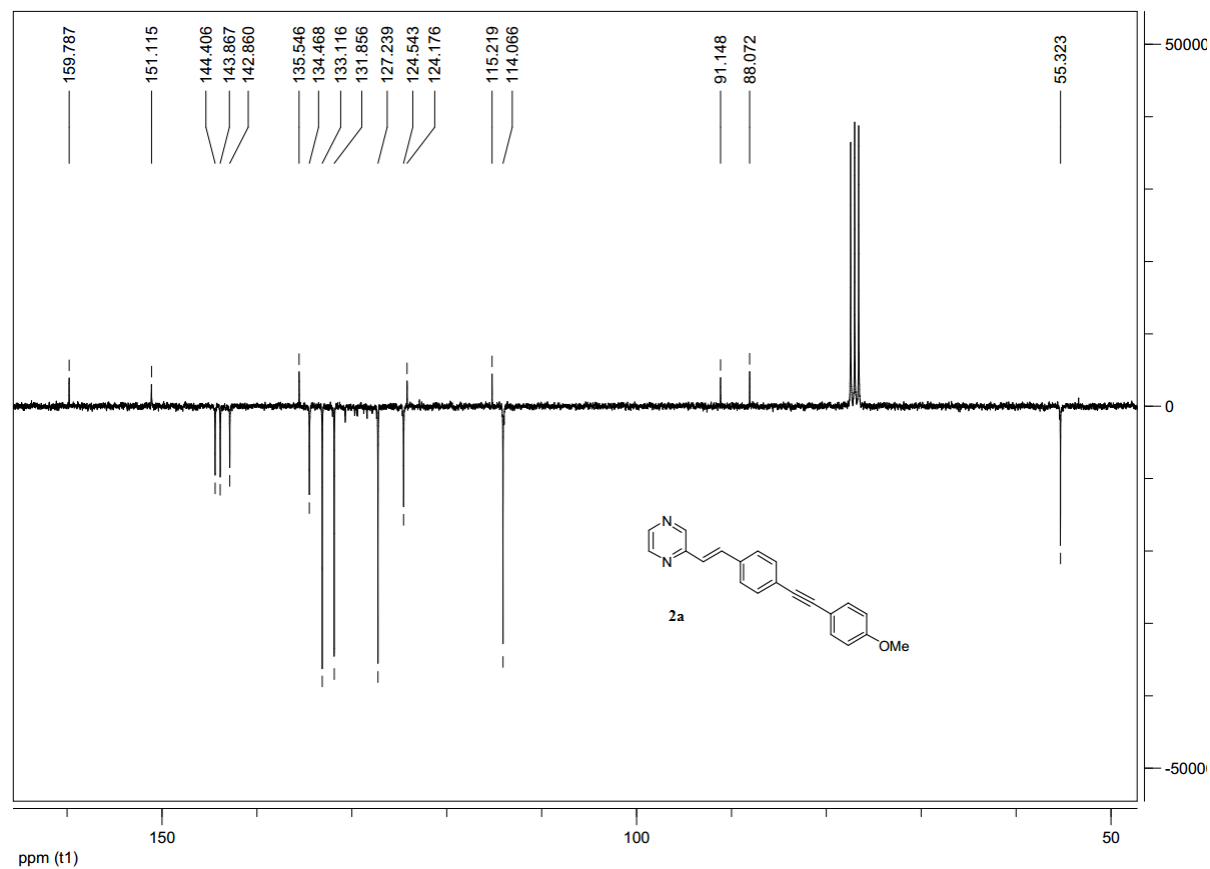
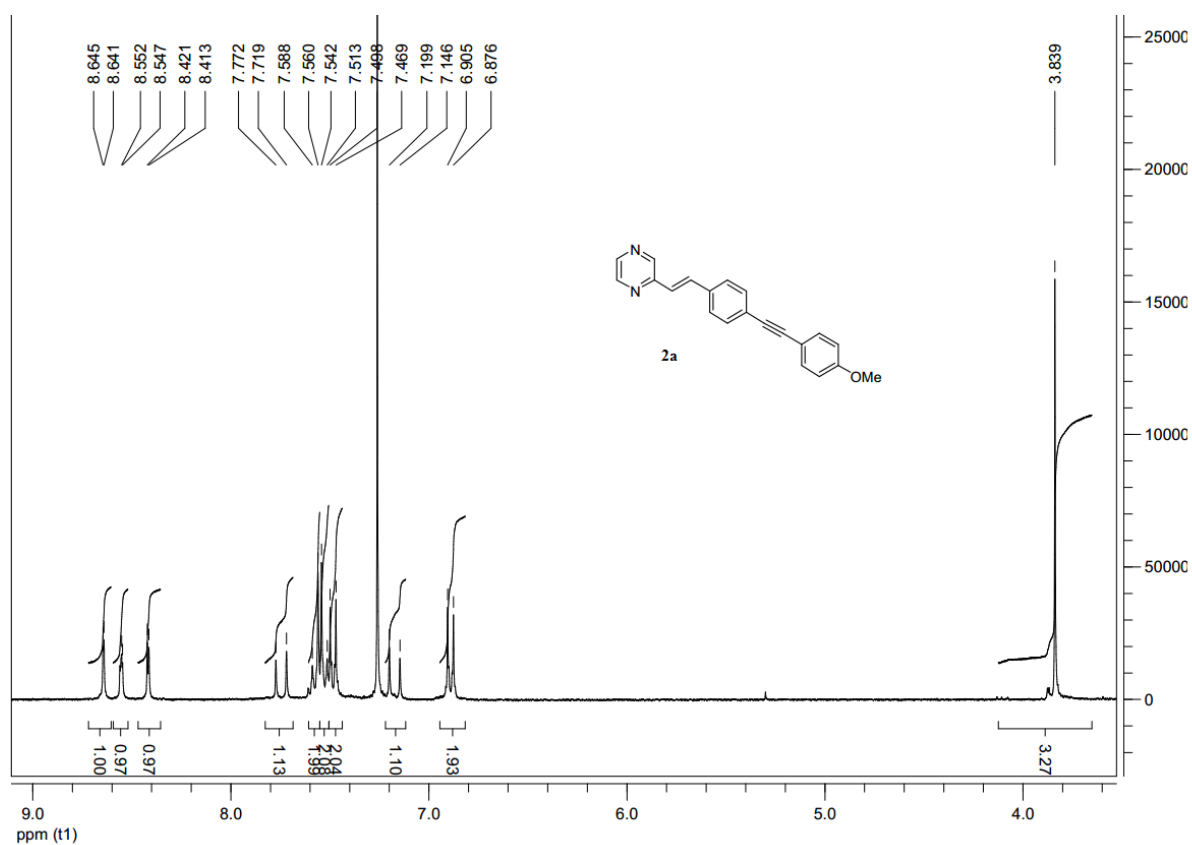
Author(s): Kellyn Hoffert, Raphaël J. Durand, Sébastien Gauthier, Françoise Robin-le Guen, Sylvain Achelle*

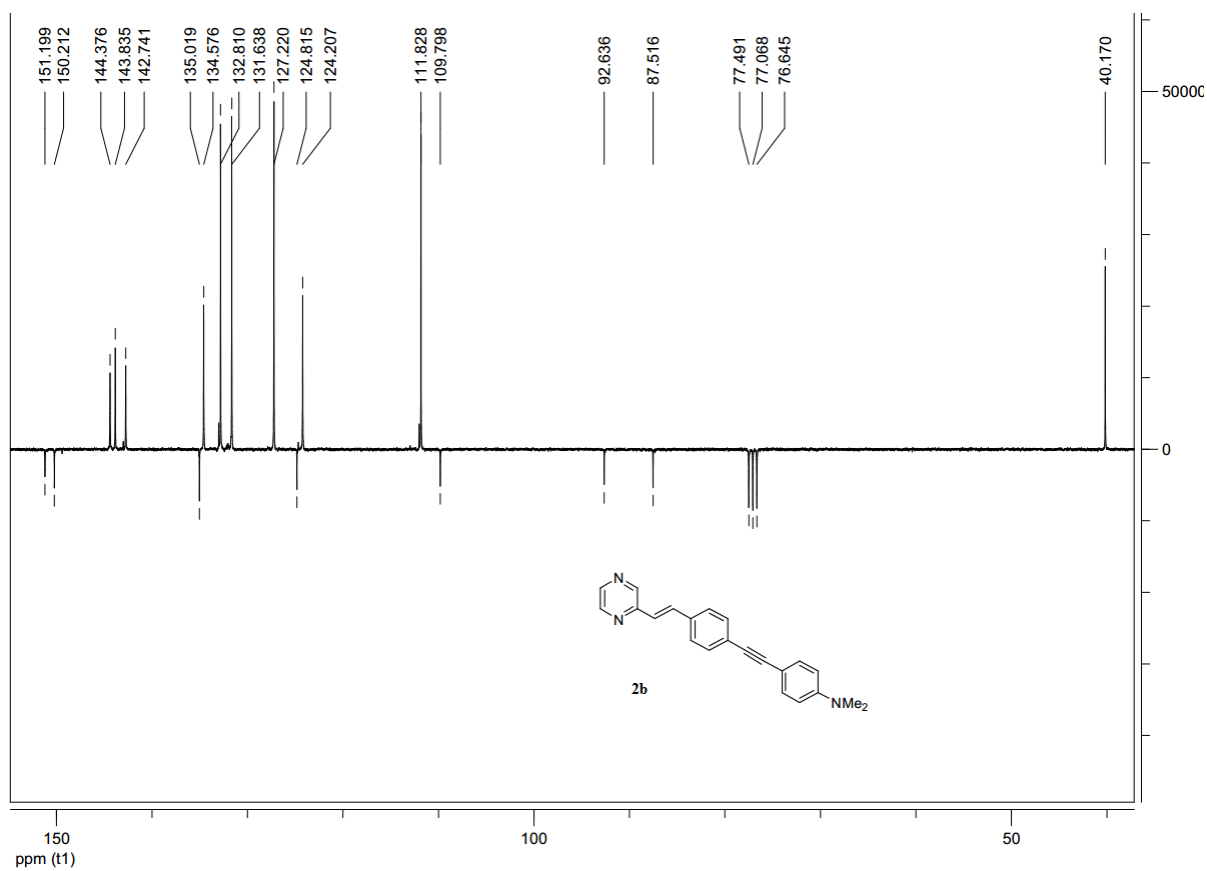
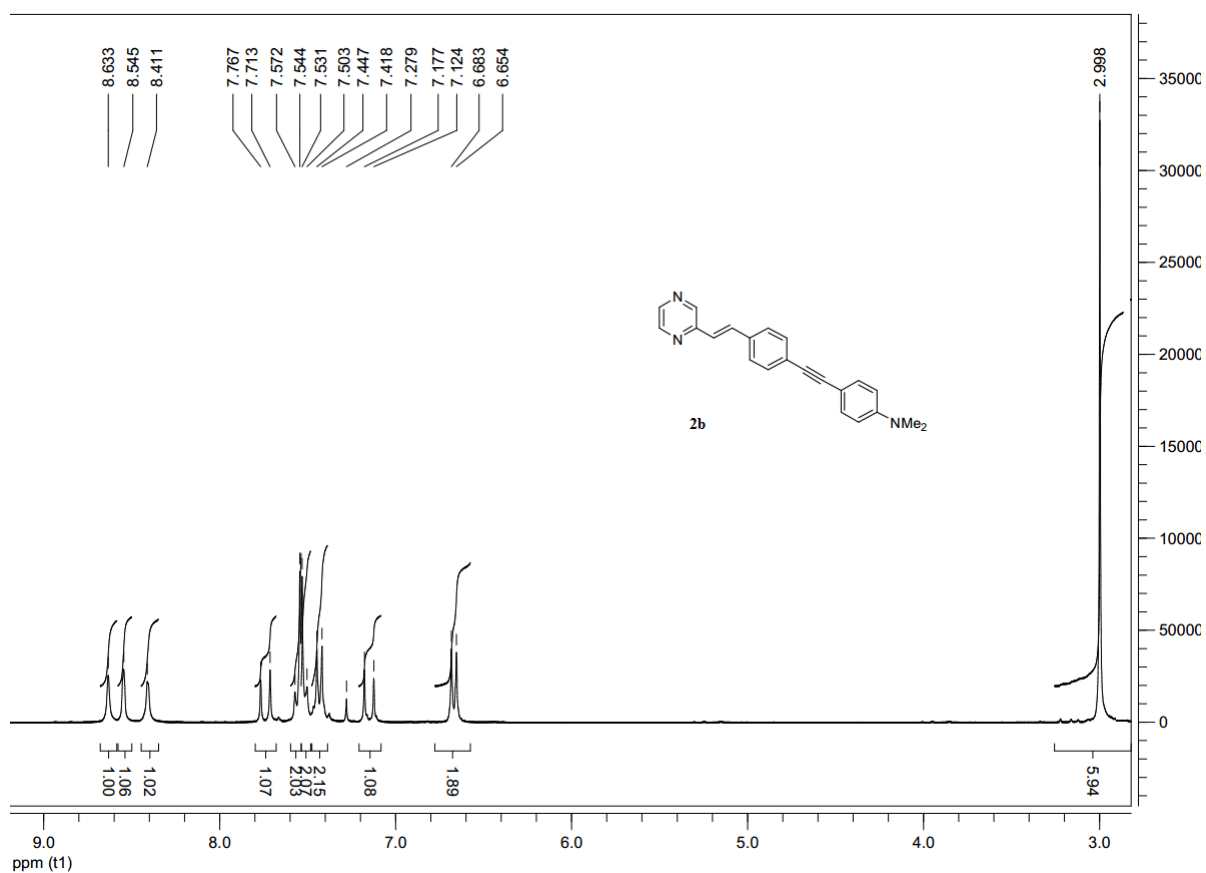
Table of contents

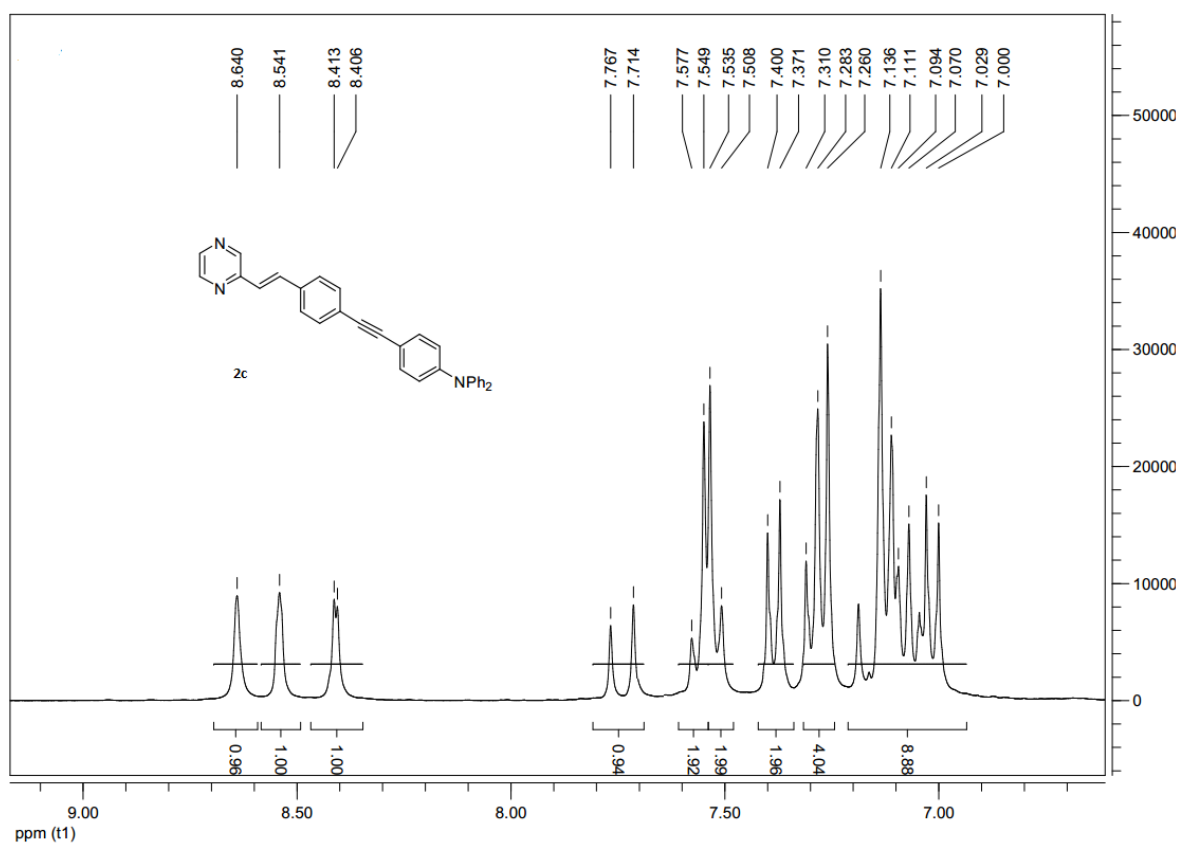
Copy of ^1H and ^{13}C NMR spectra of compounds 2-6	S3
Normalized UV-vis and emission spectra of compounds 1	S21
Normalized UV-vis and emission spectra of compounds 2	S22
Normalized UV-vis and emission spectra of compounds 3	S23
Normalized UV-vis and emission spectra of compounds 4	S24
Normalized UV-vis and emission spectra of compounds 5	S25
Normalized UV-vis and emission spectra of compounds 6	S26
Emission maxima (λ_{em}) as a function of Dimroth-Reichart polarity parameter for methoxy derivatives	S27
Emission maxima (λ_{em}) as a function of Dimroth-Reichart polarity parameter for diphenylamino derivatives	S28

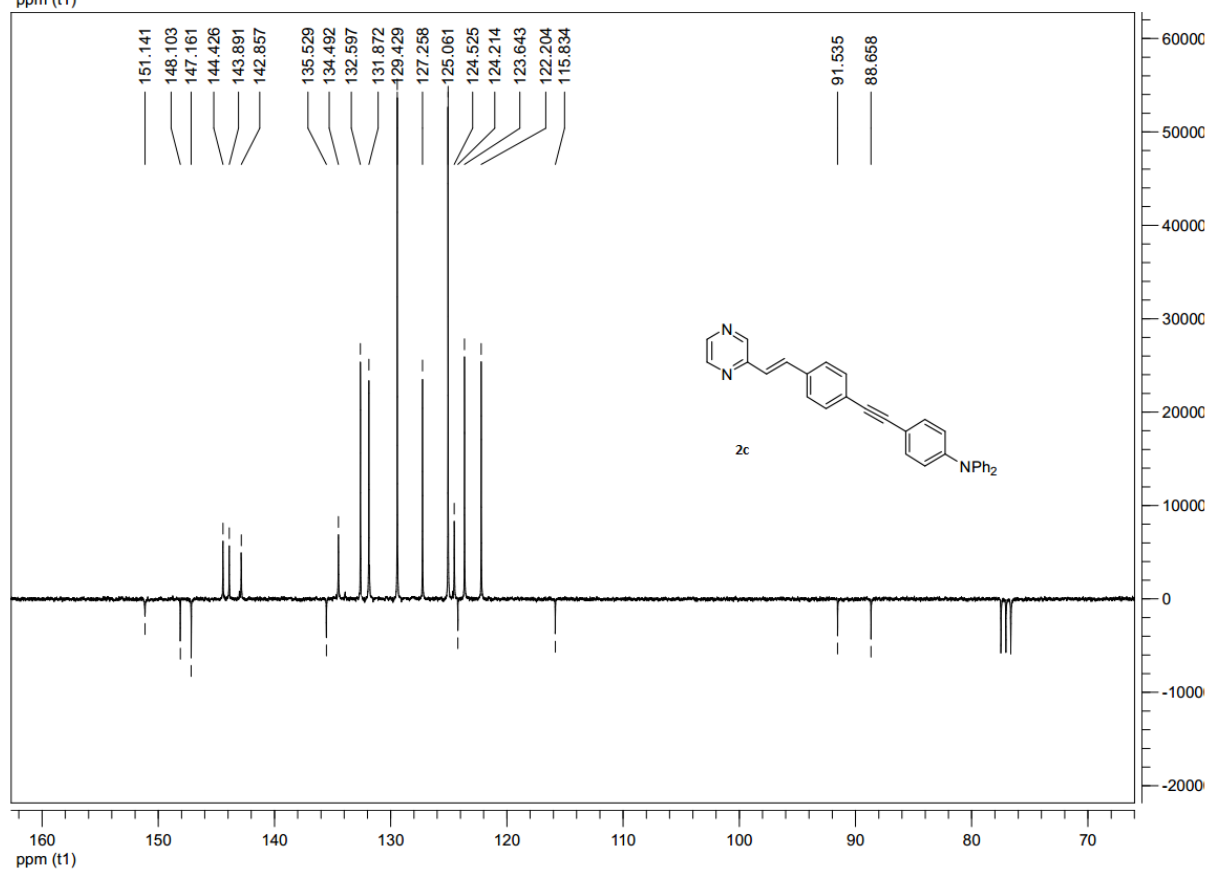
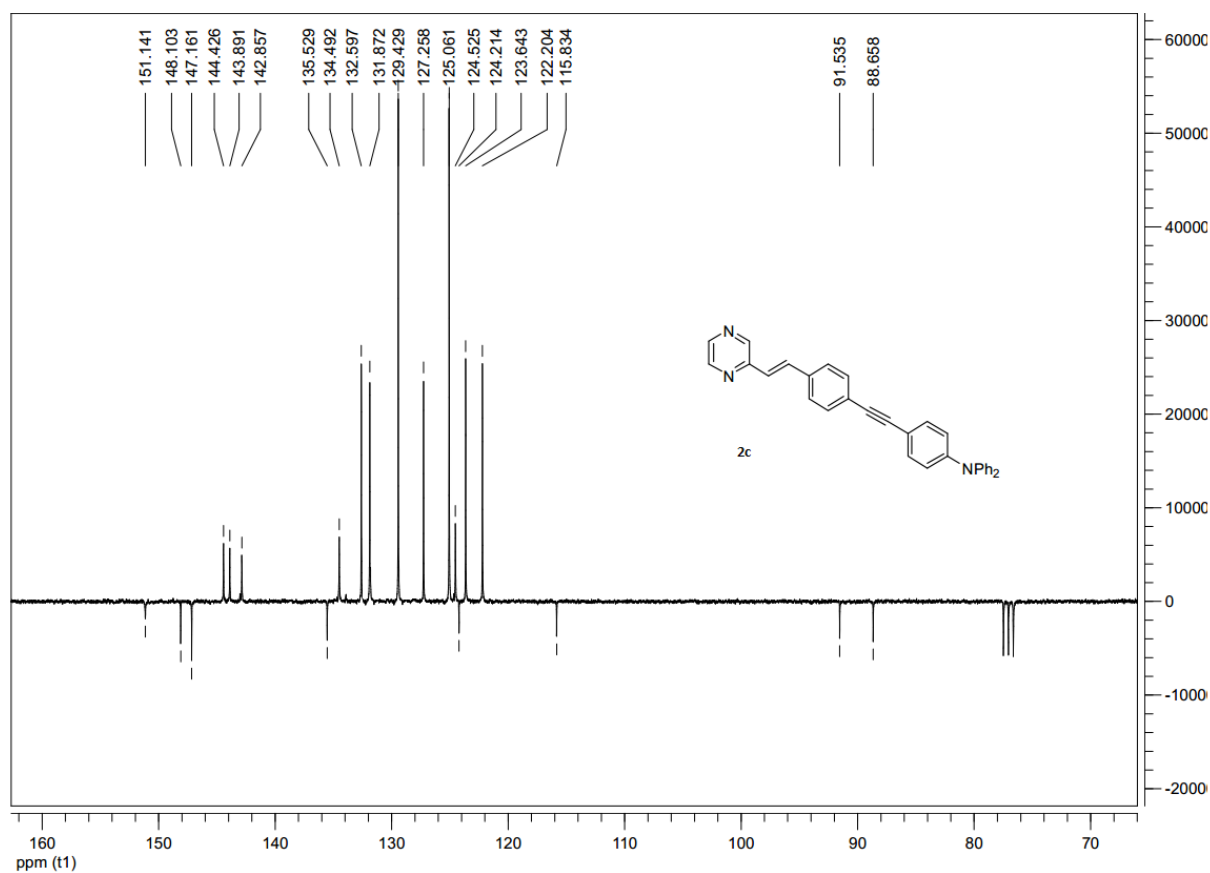


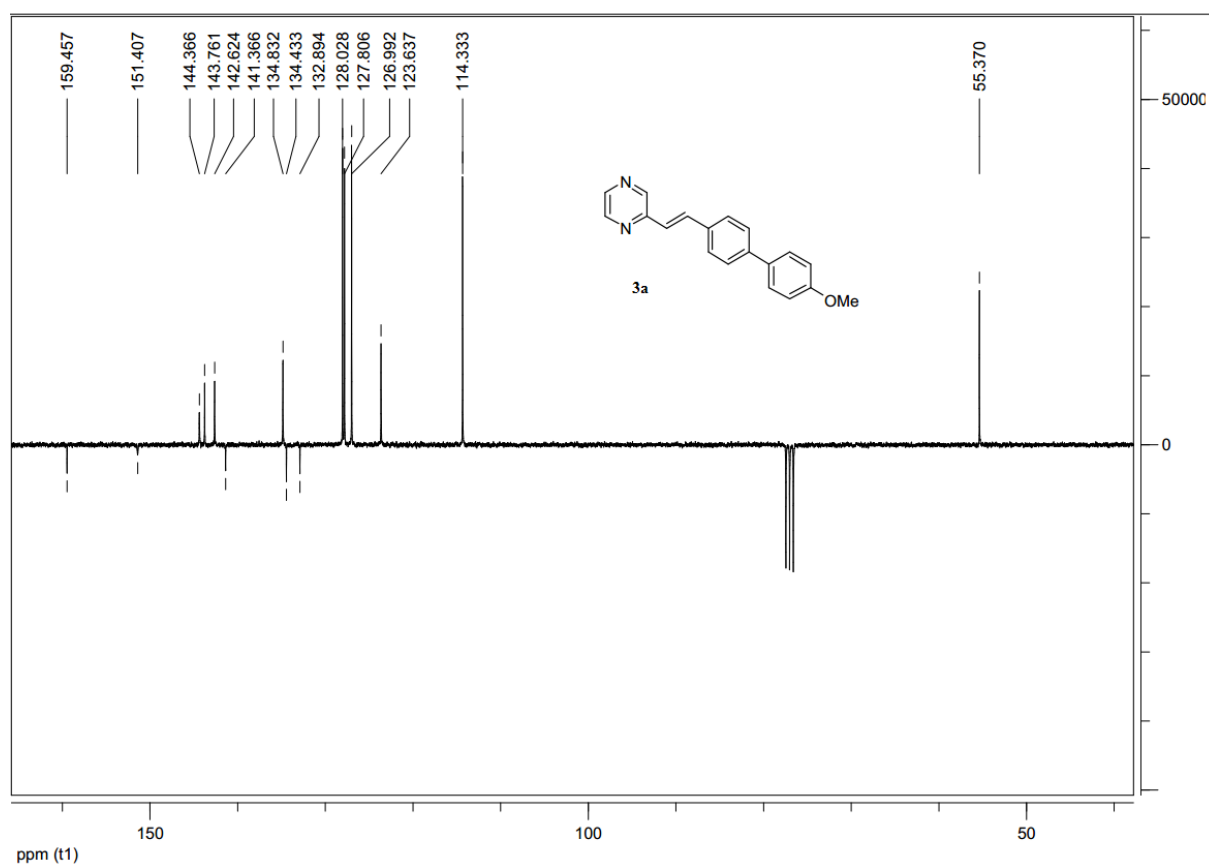
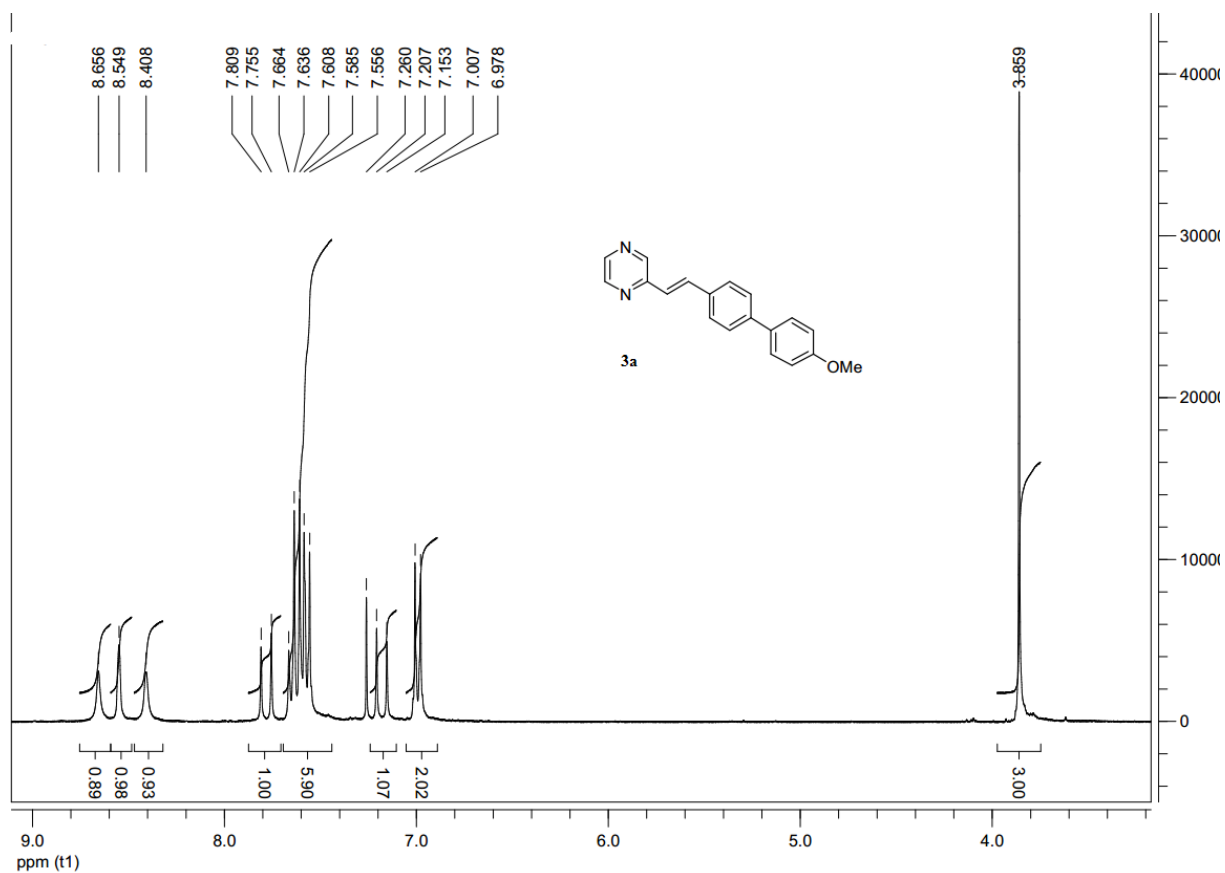


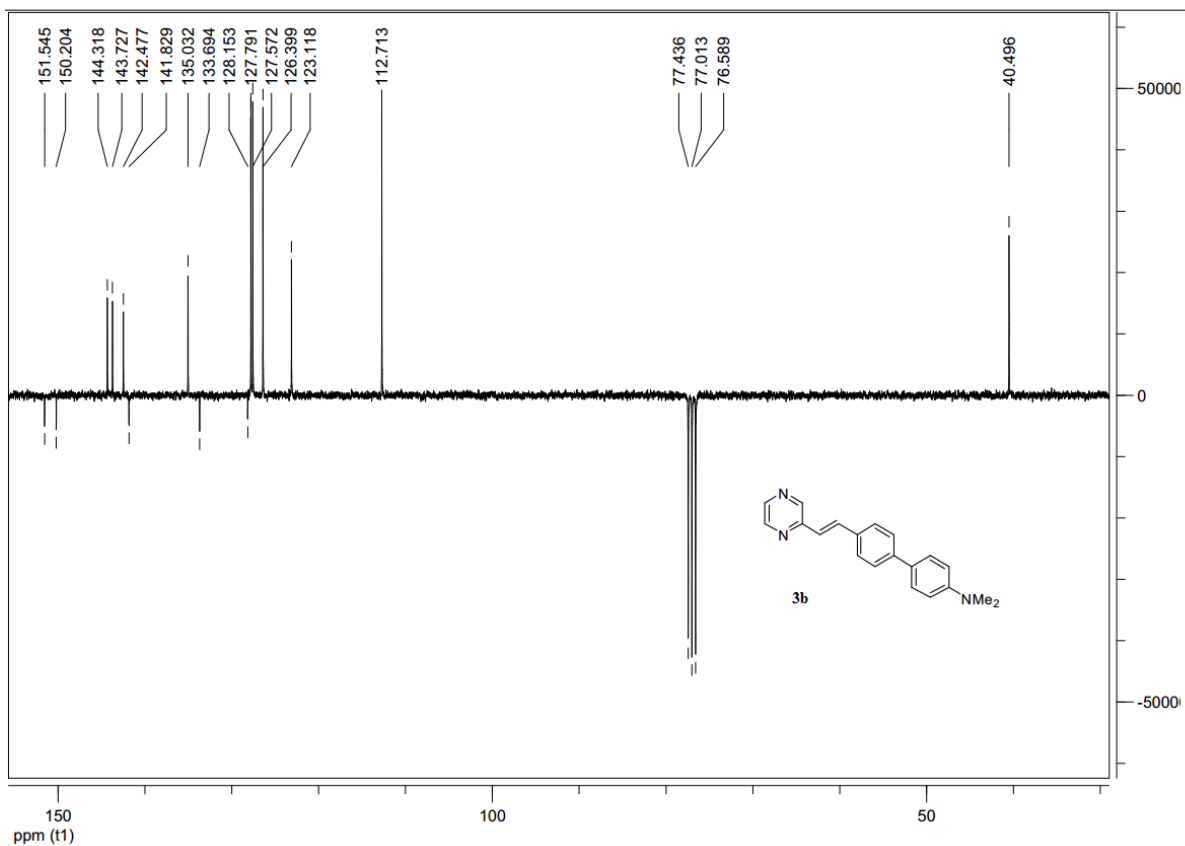
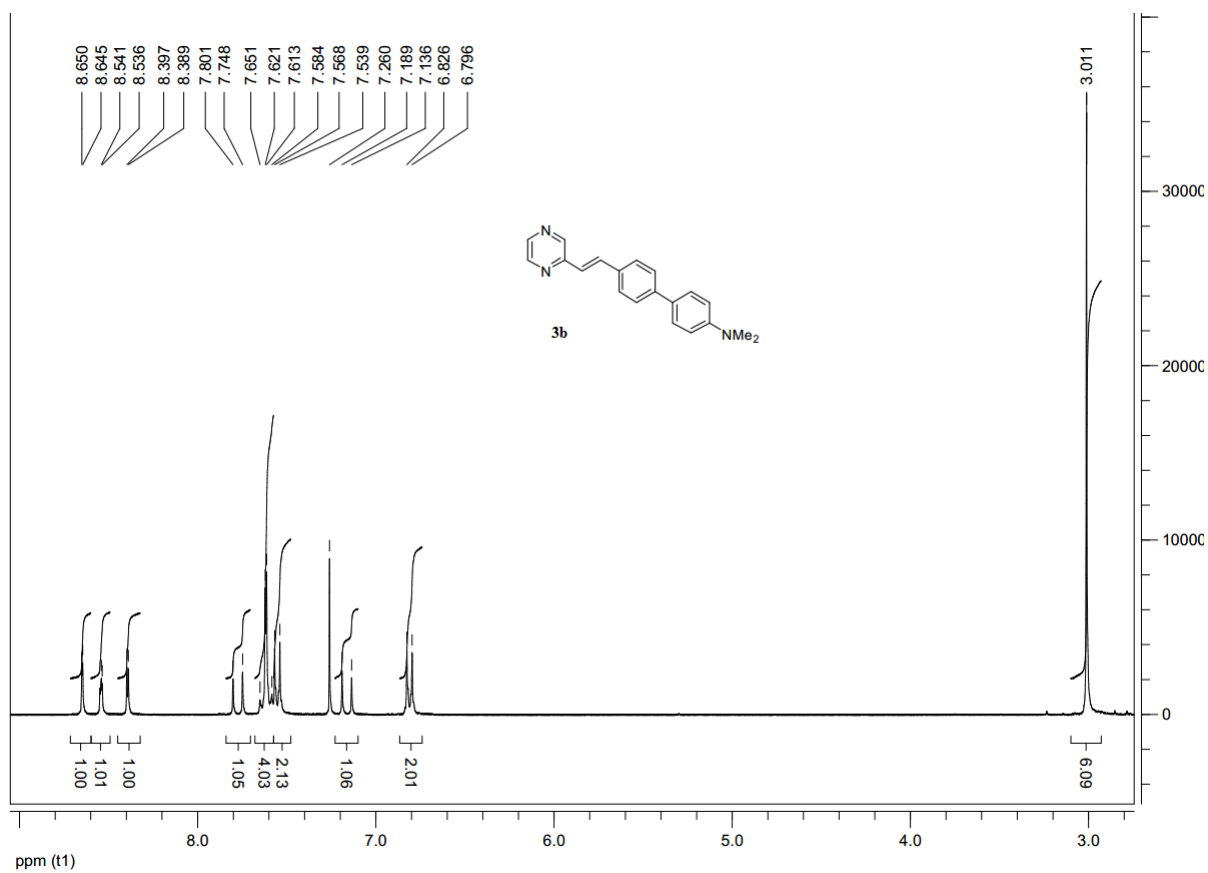


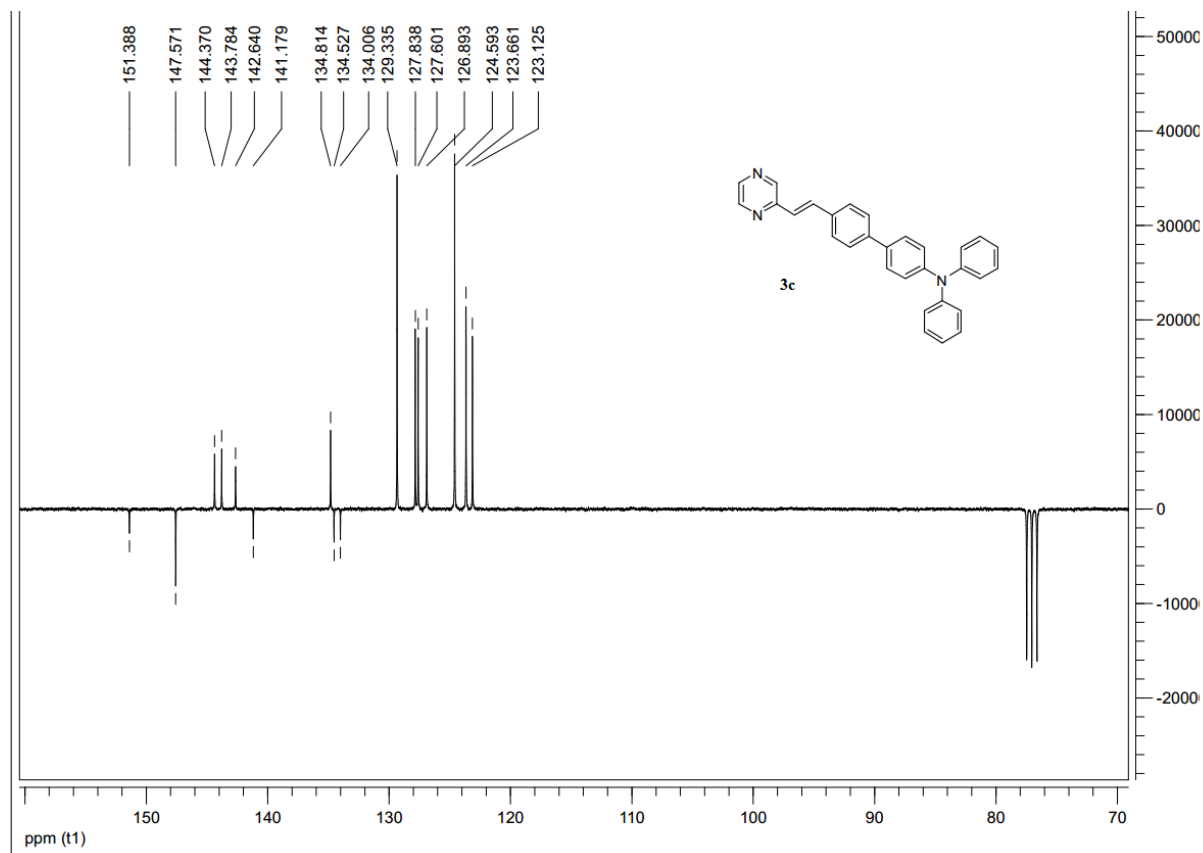
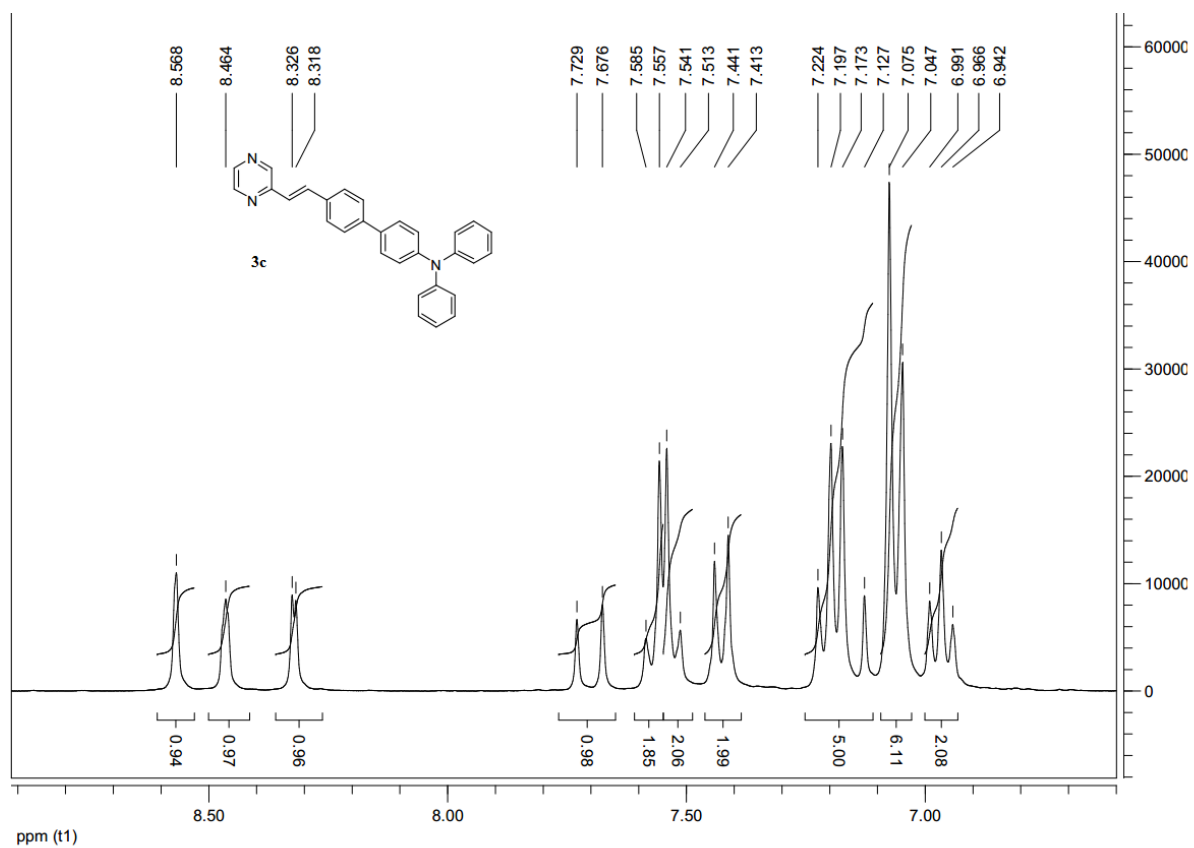


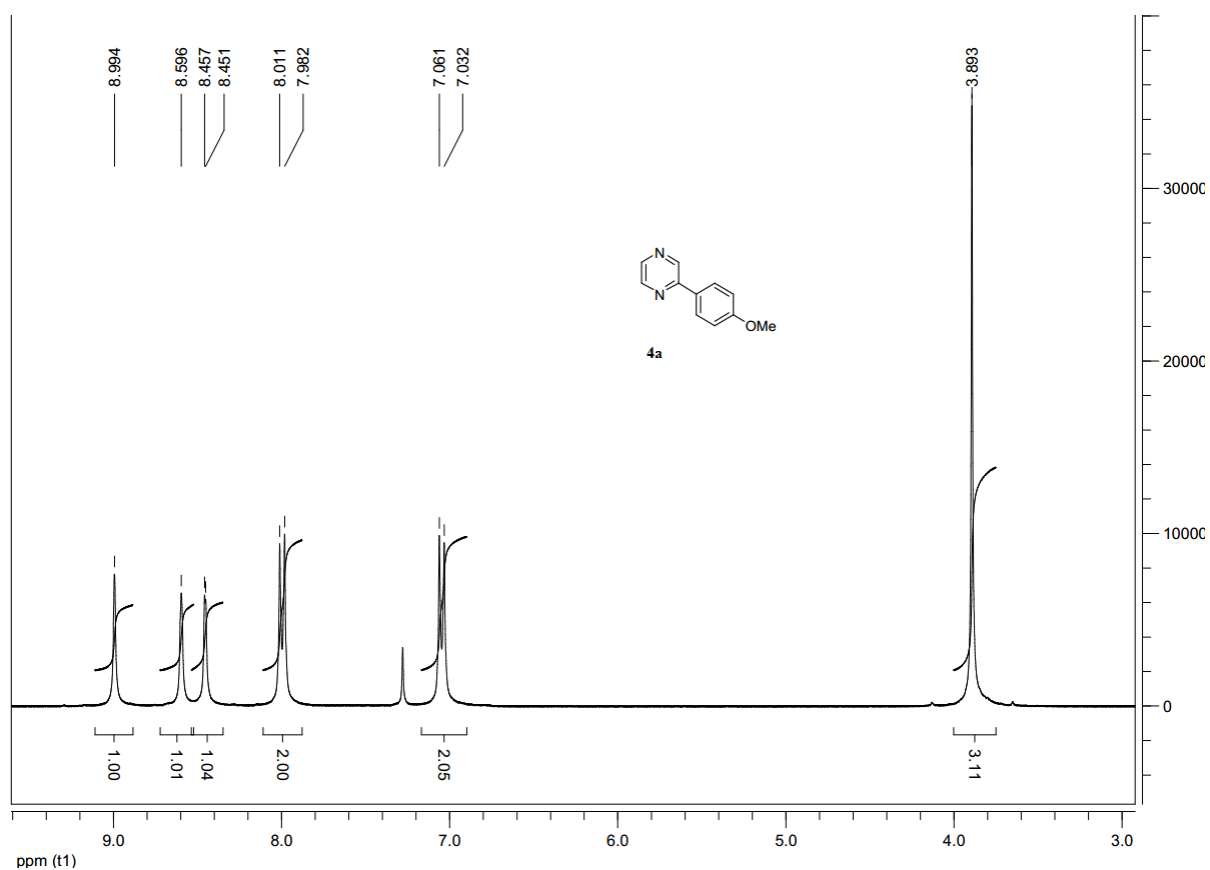


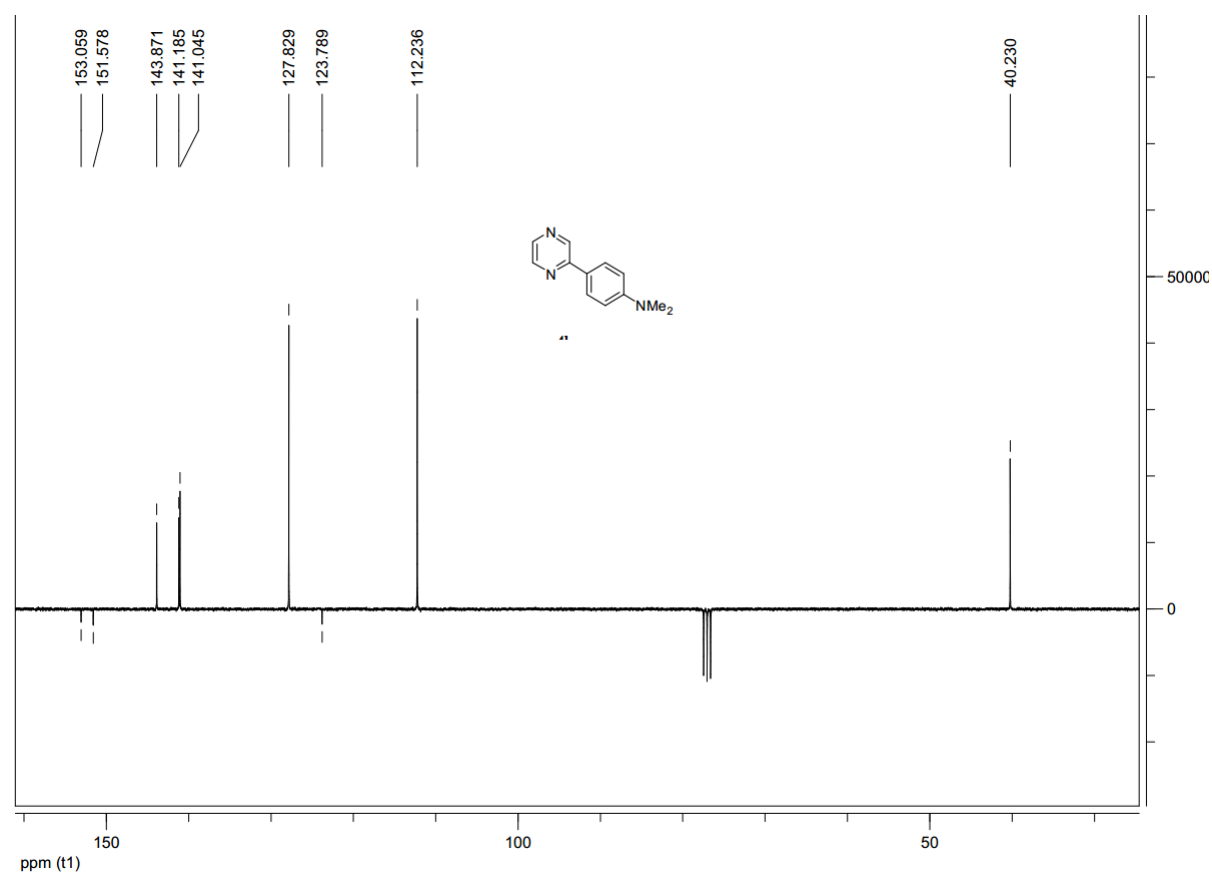
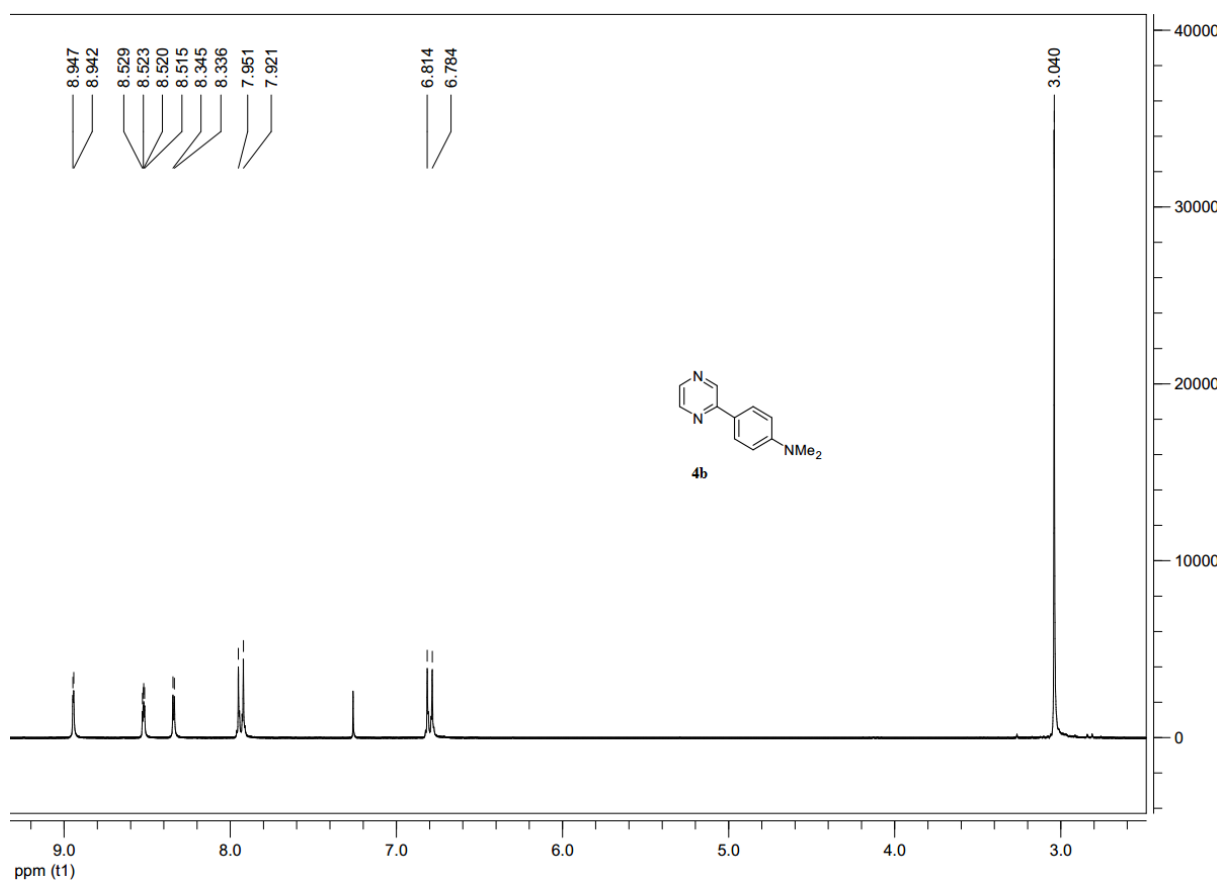


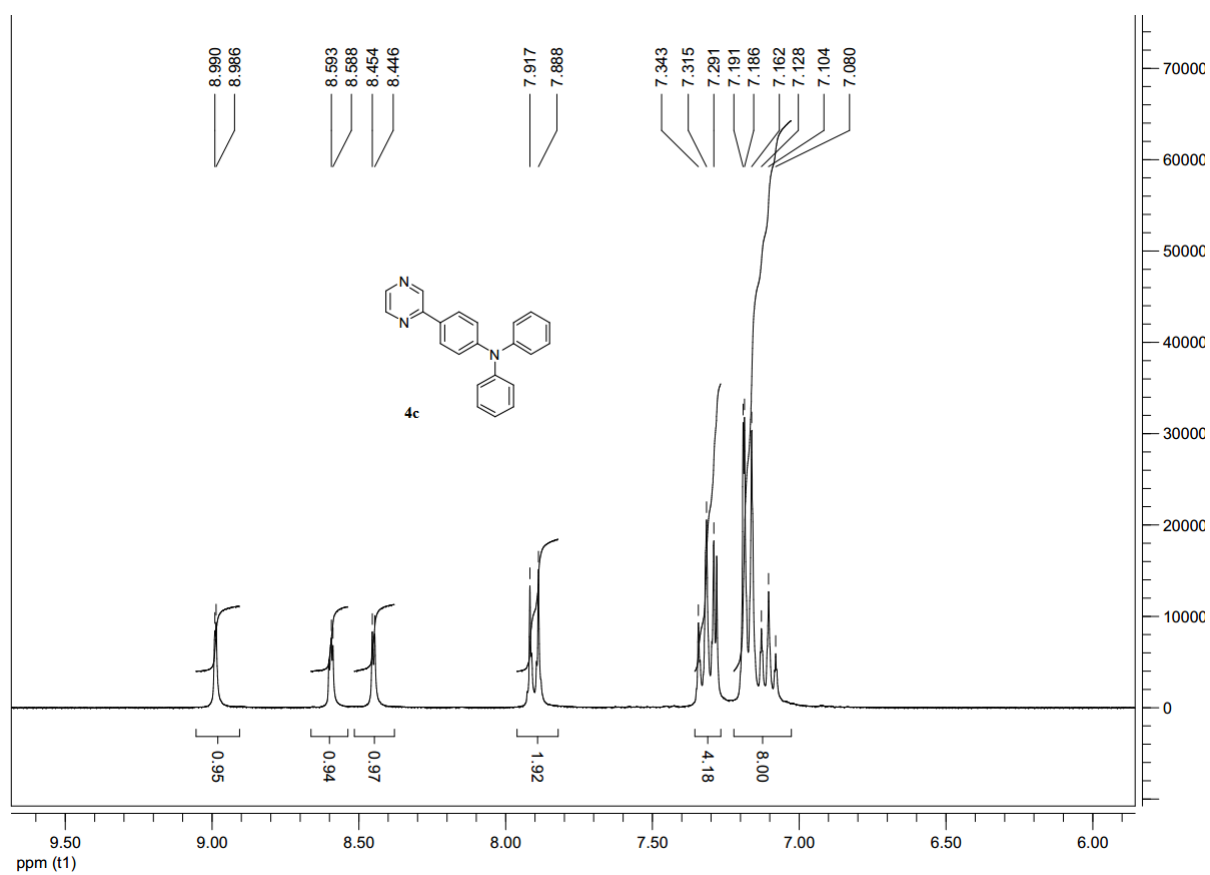


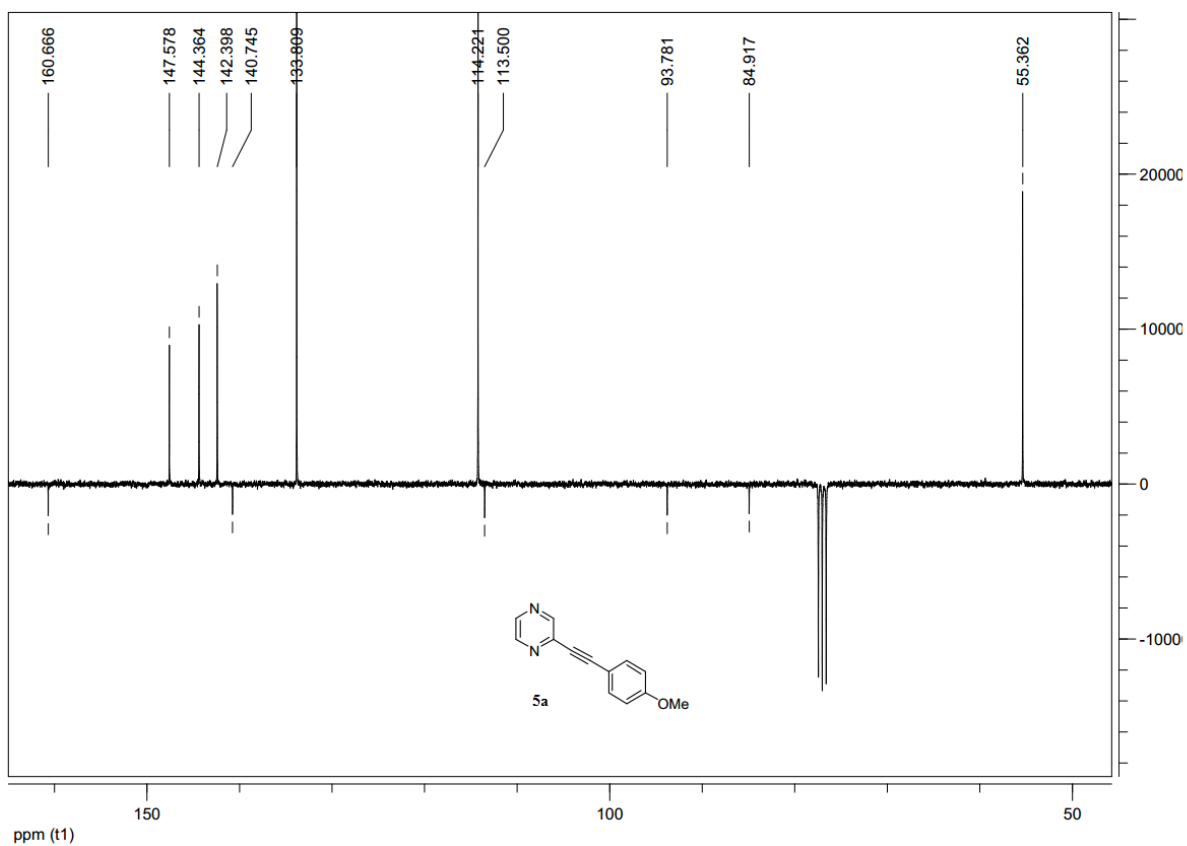
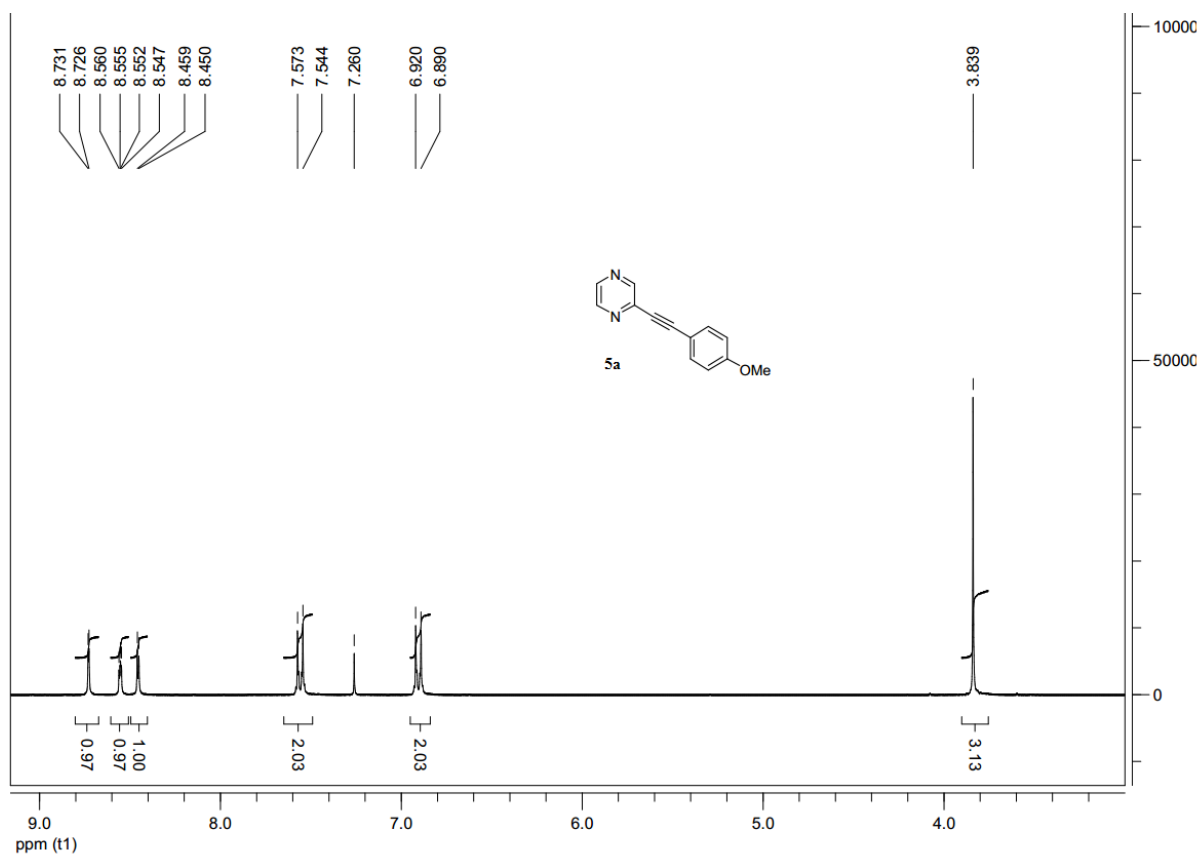


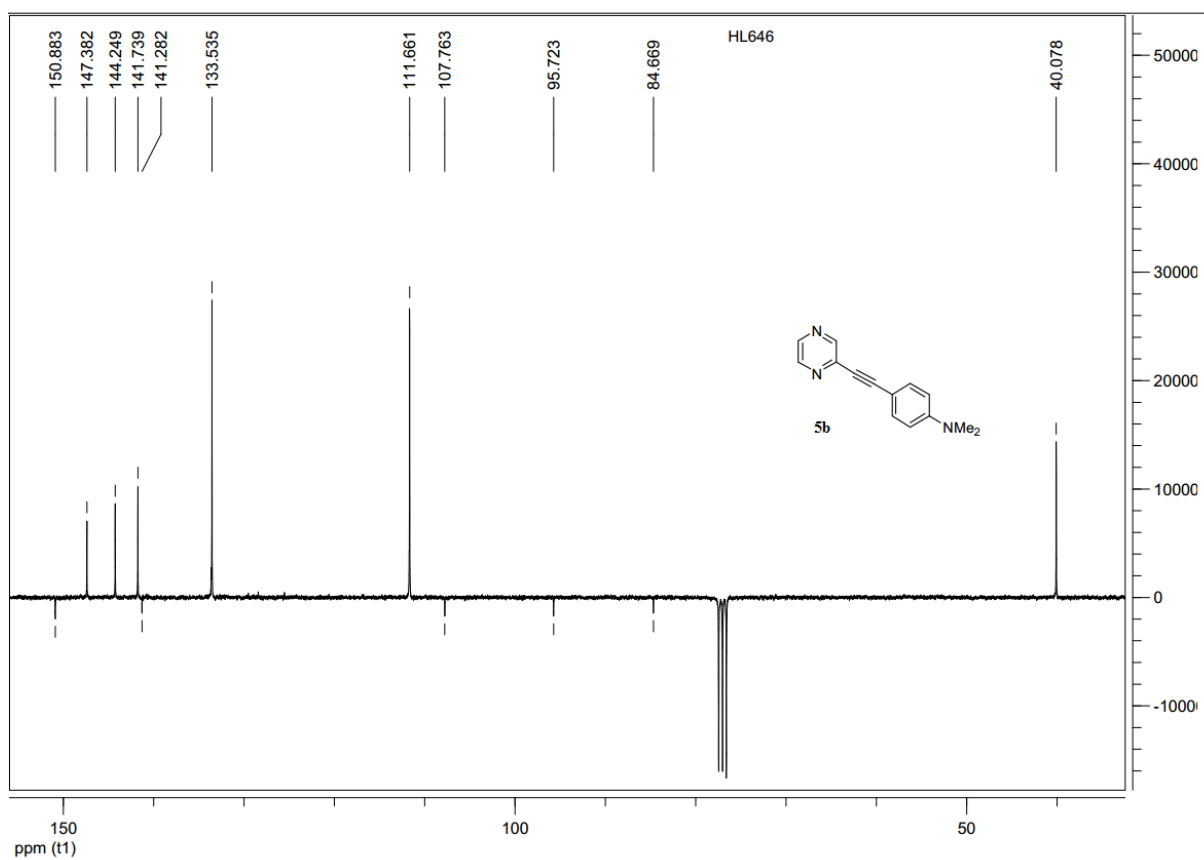
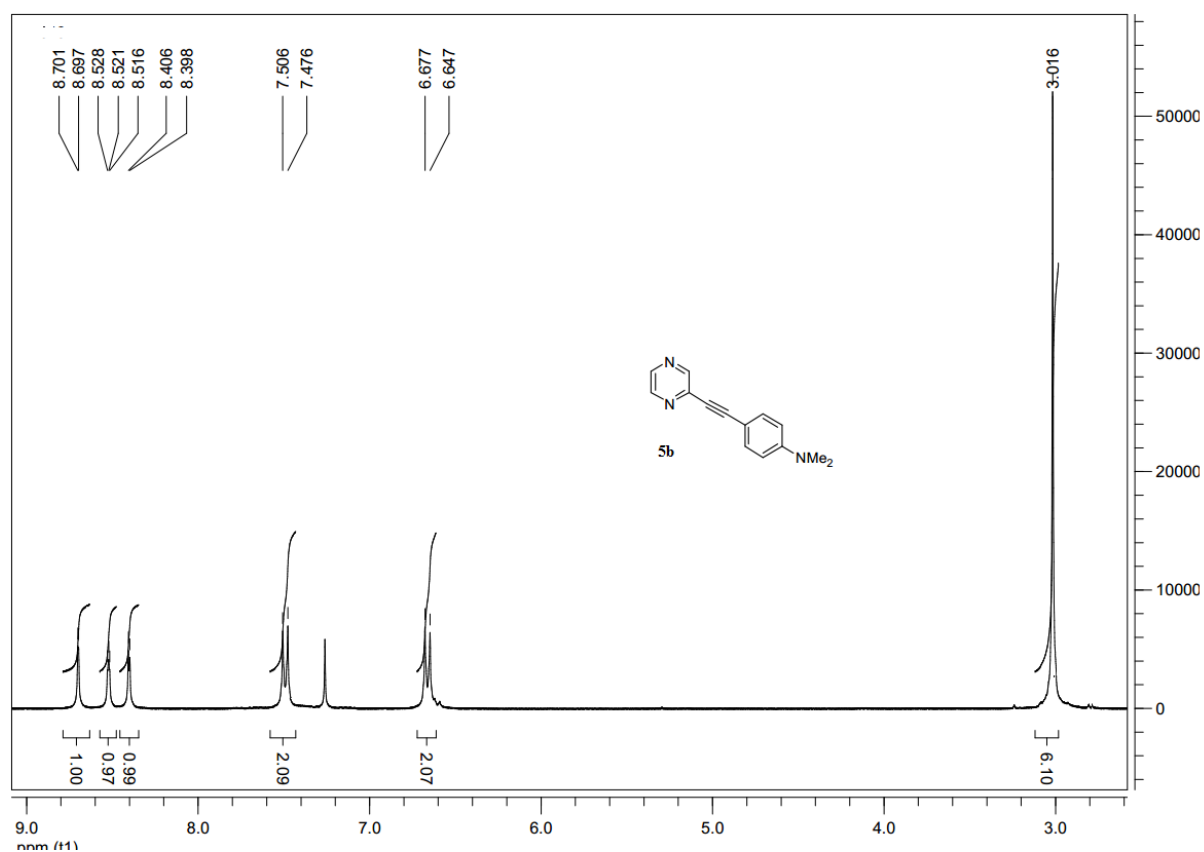


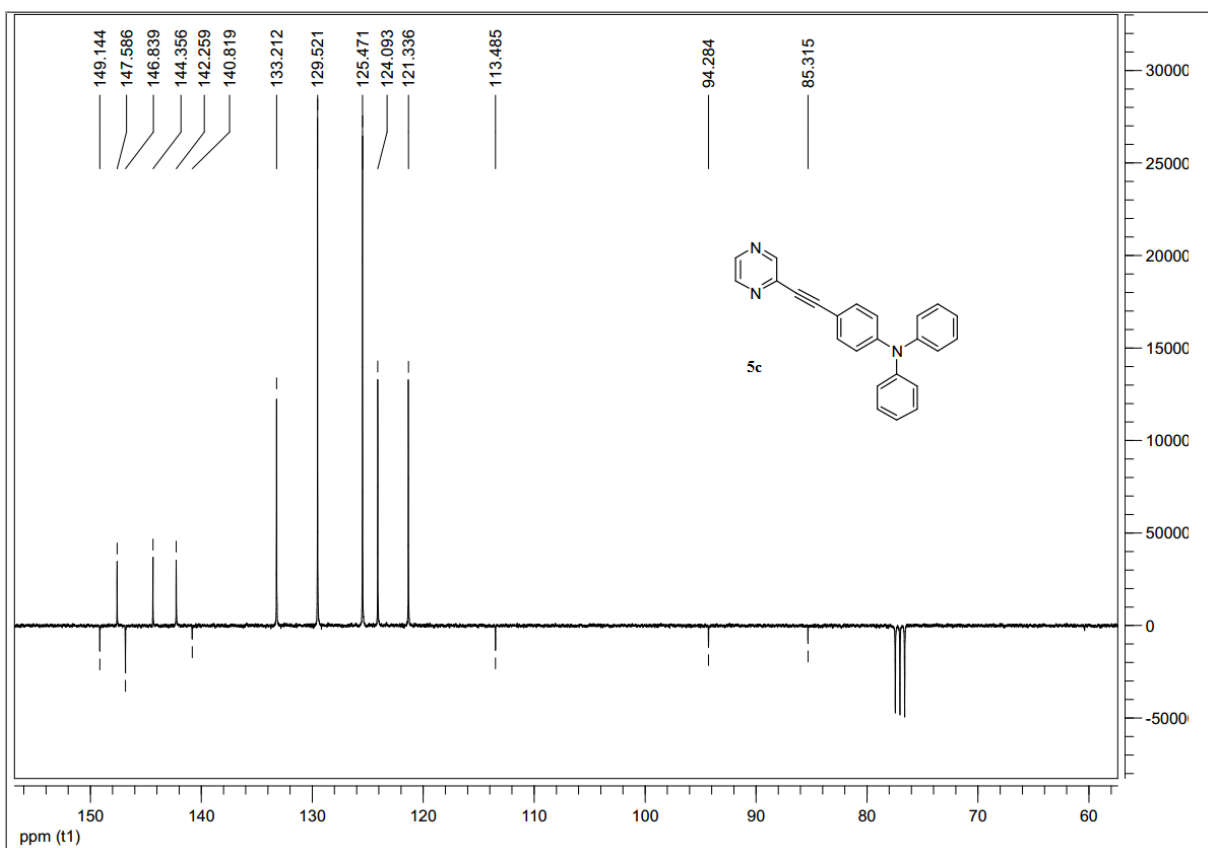
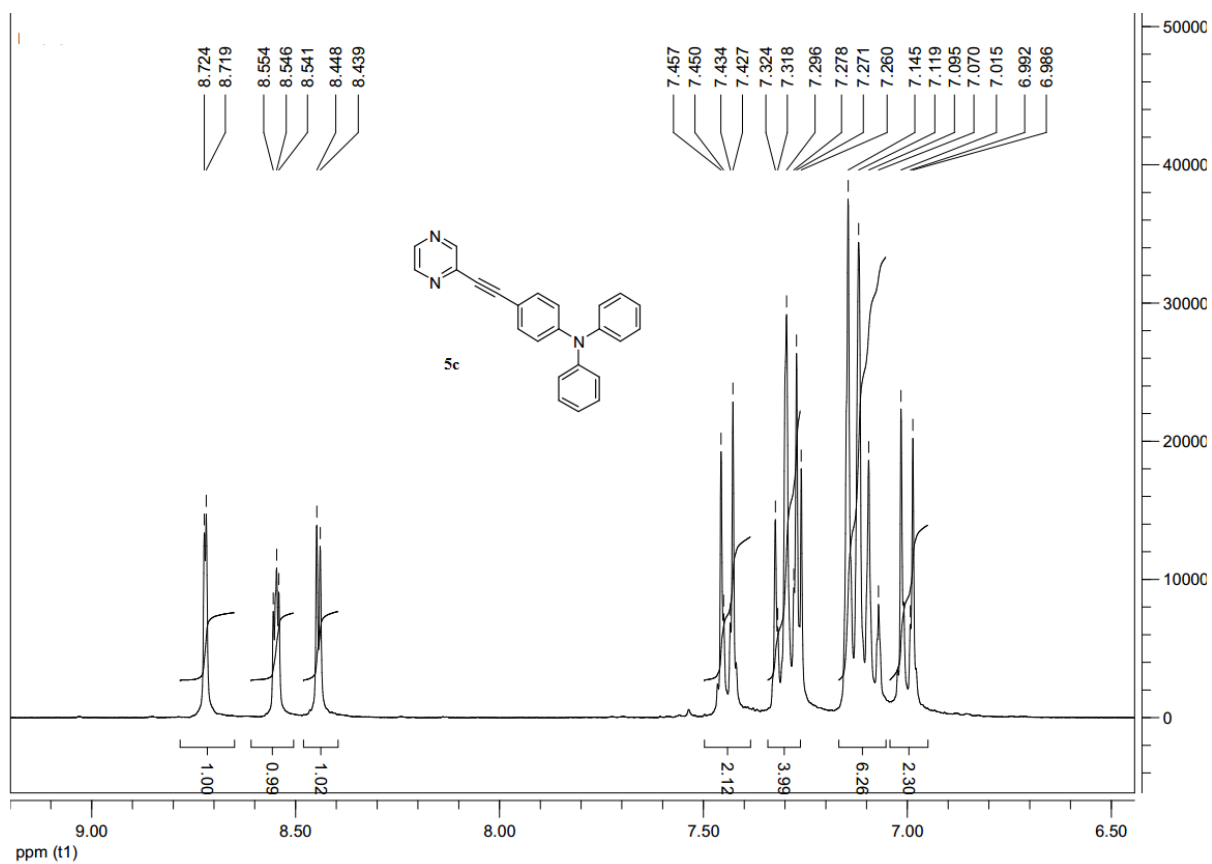




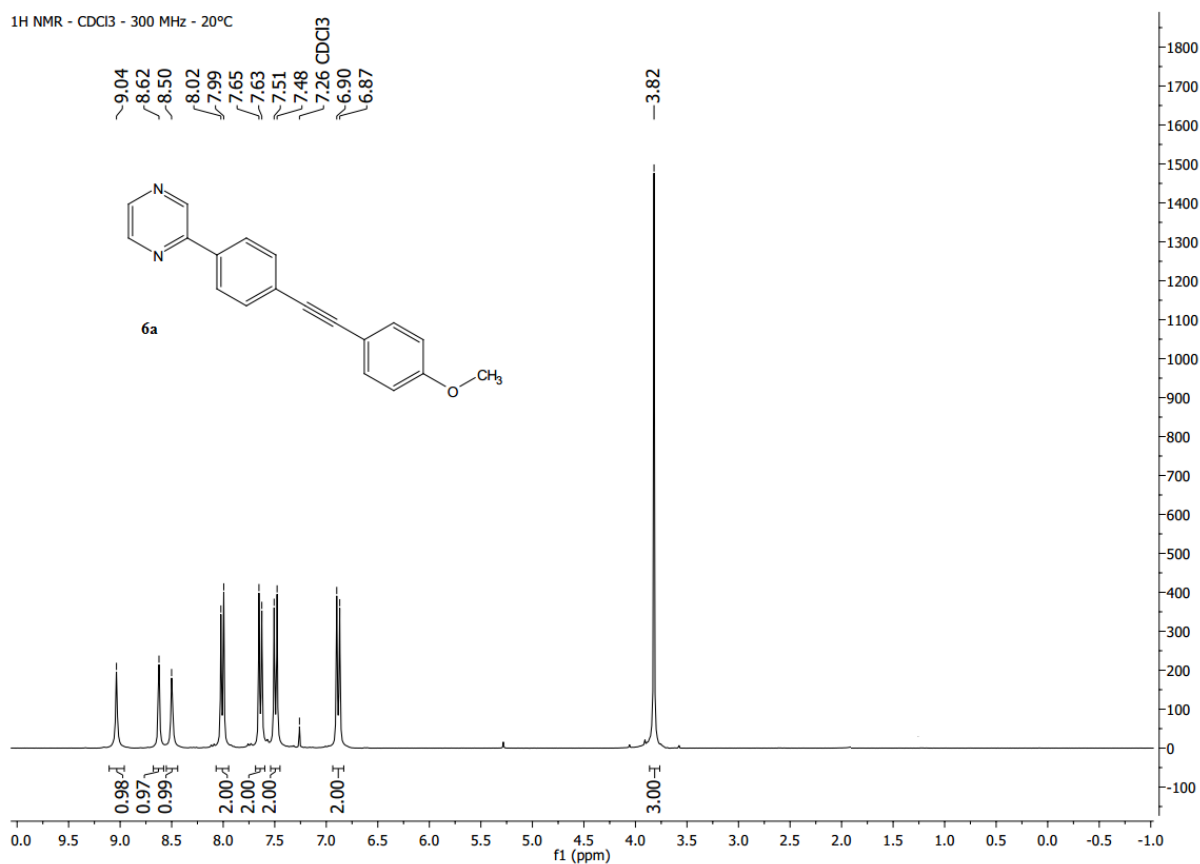




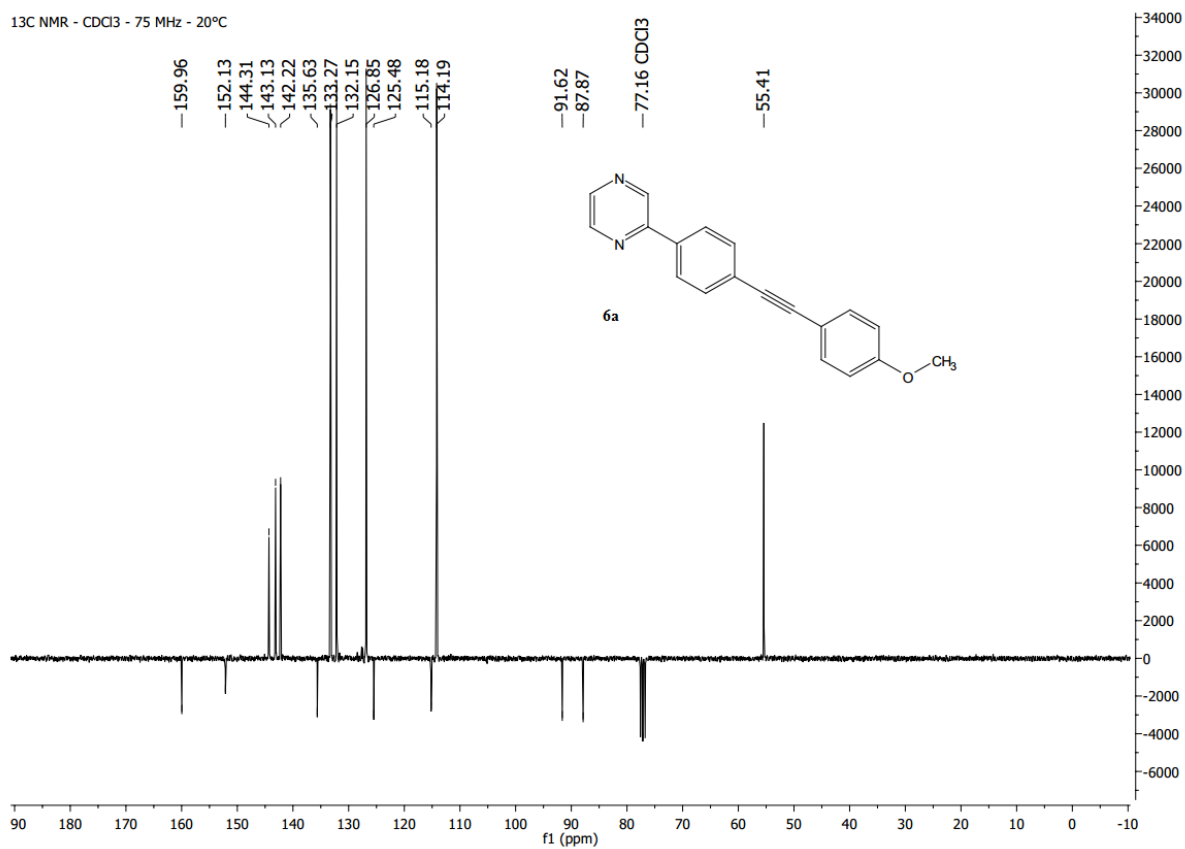


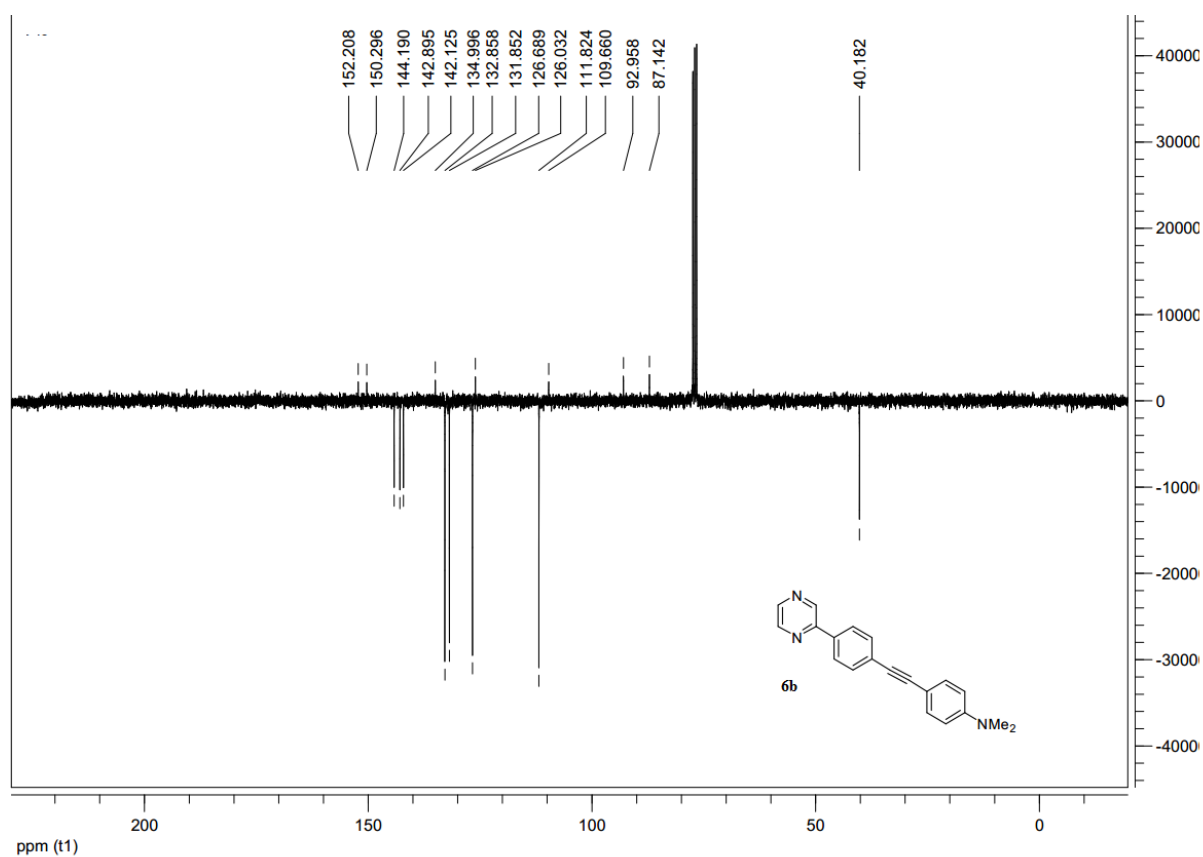
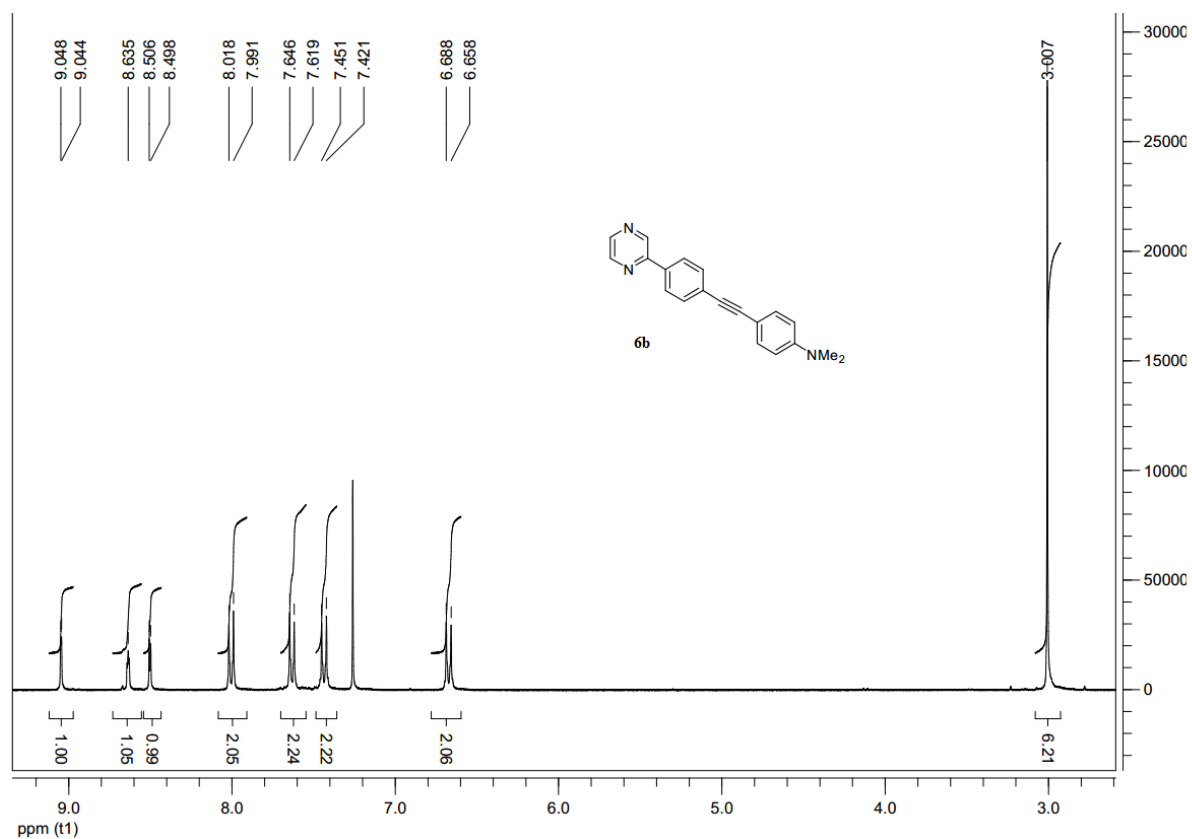


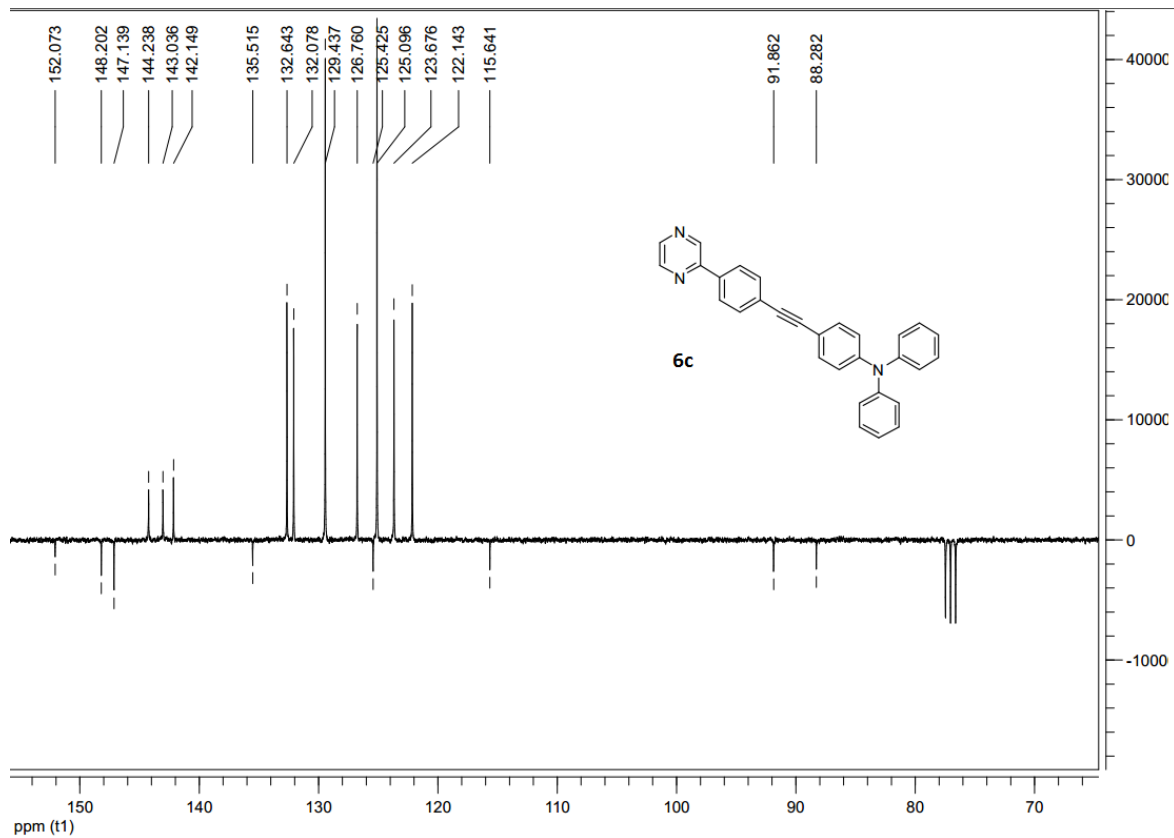
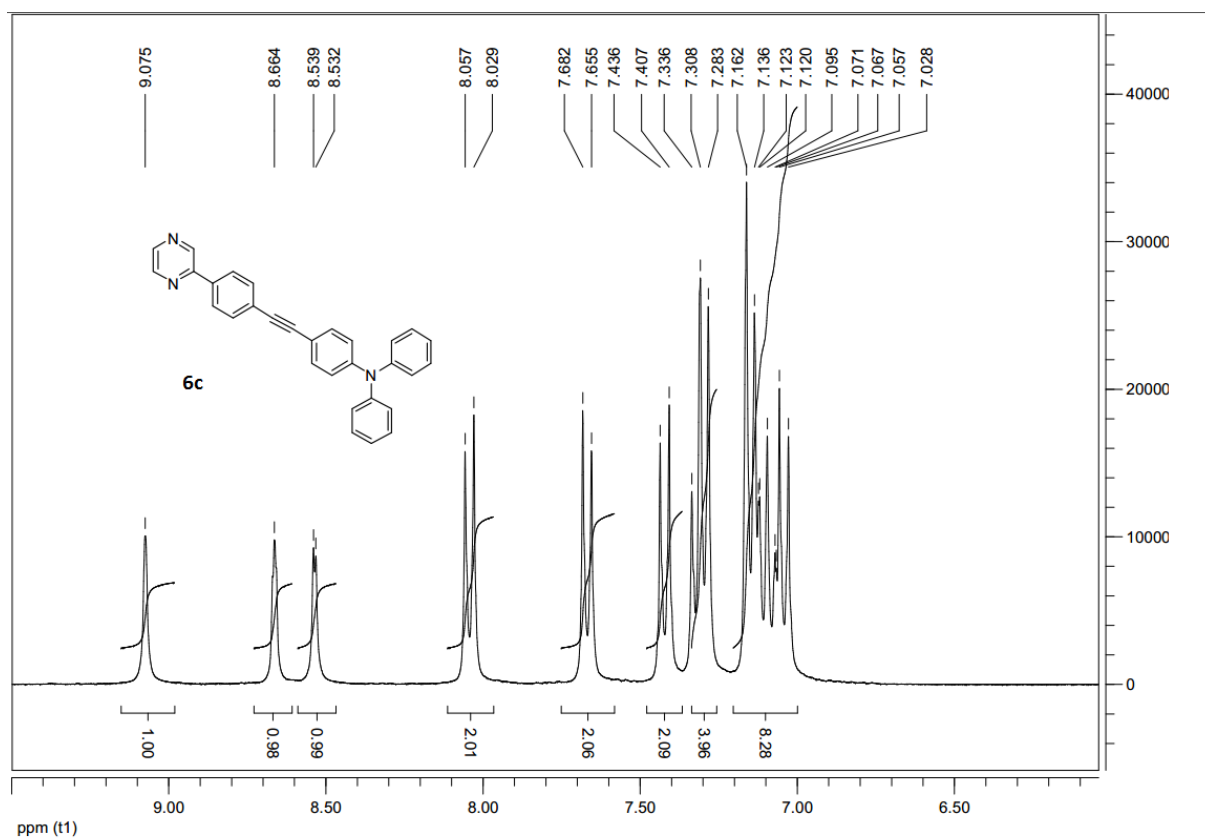
¹H NMR - CDCl₃ - 300 MHz - 20°C



¹³C NMR - CDCl₃ - 75 MHz - 20°C







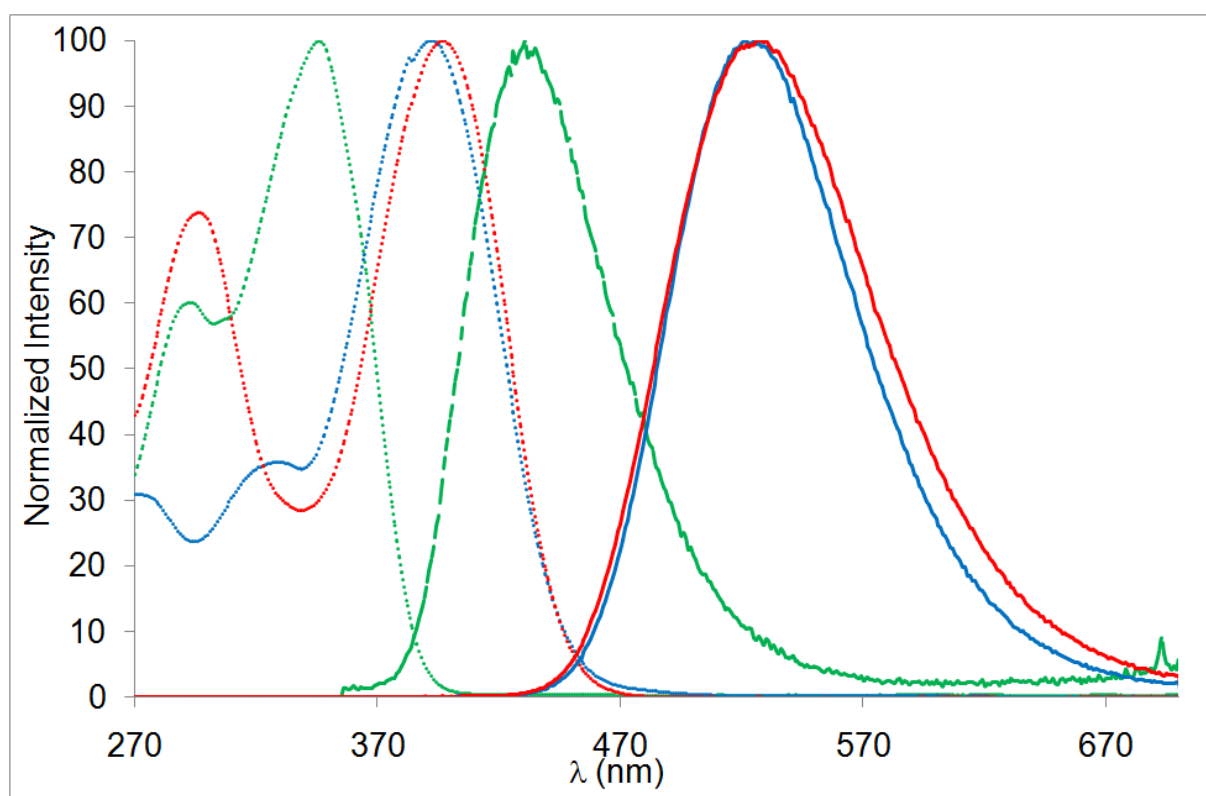


Figure S20: Normalized UV/Vis (dashed line) and emission spectra (solid lines) of compounds **1a** (green), **1b** (blue) and **1c** (red) in CH_2Cl_2 .

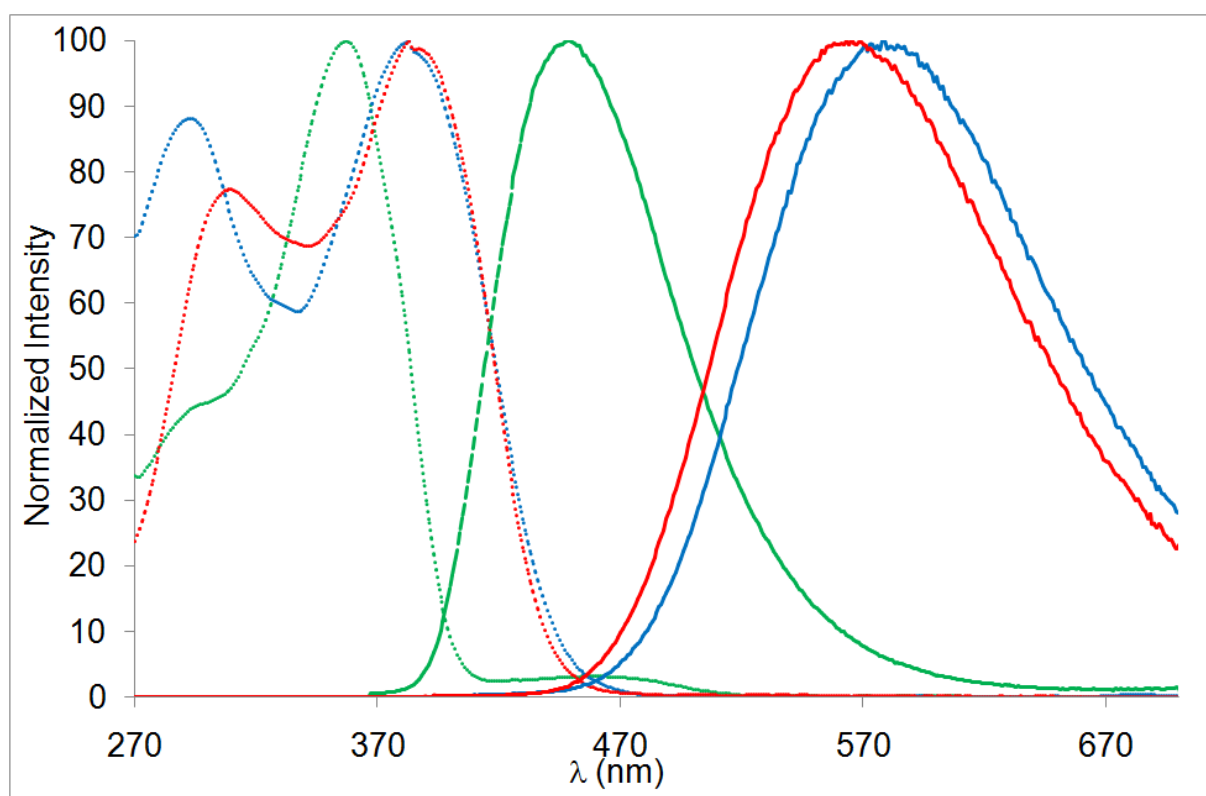


Figure S21: Normalized UV/Vis (dashed line) and emission spectra (solid lines) of compounds **2a** (green), **2b** (blue) and **2c** (red) in CH_2Cl_2 .

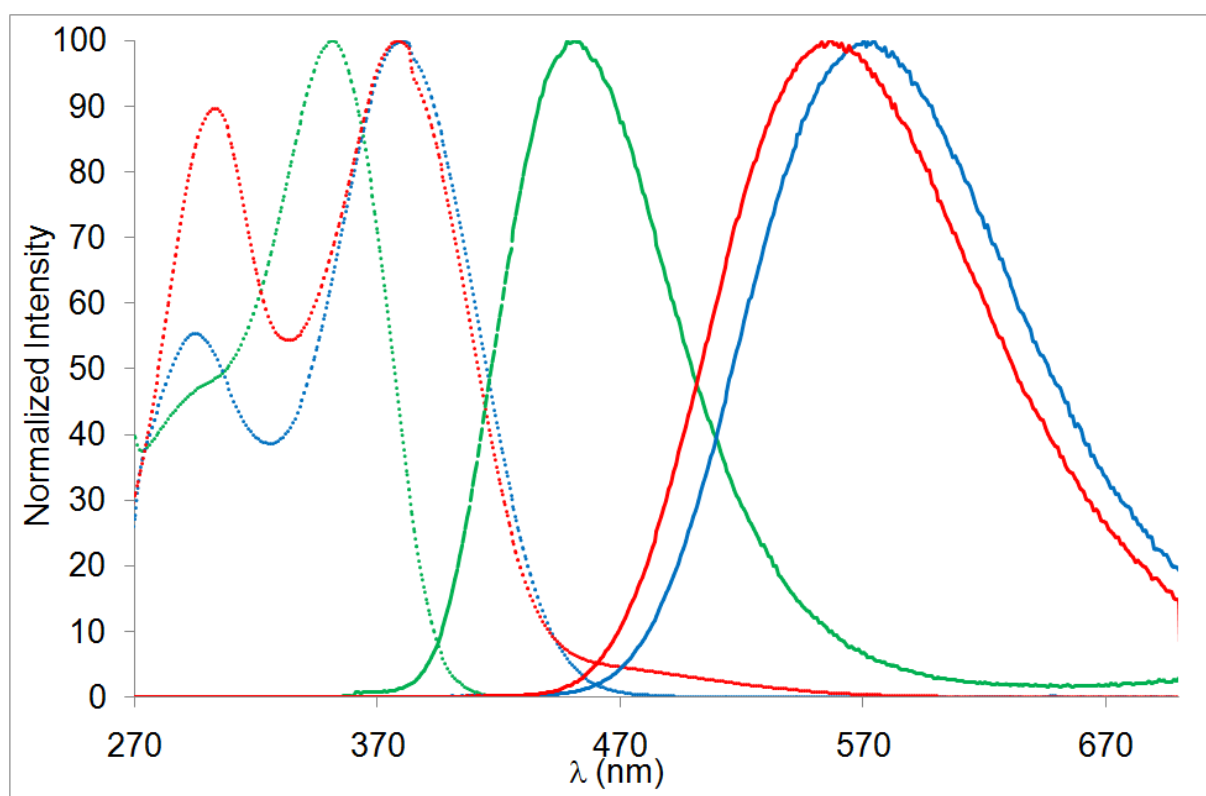


Figure S22: Normalized UV/Vis (dashed line) and emission spectra (solid lines) of compounds **3a** (green), **3b** (blue) and **3c** (red) in CH_2Cl_2 .

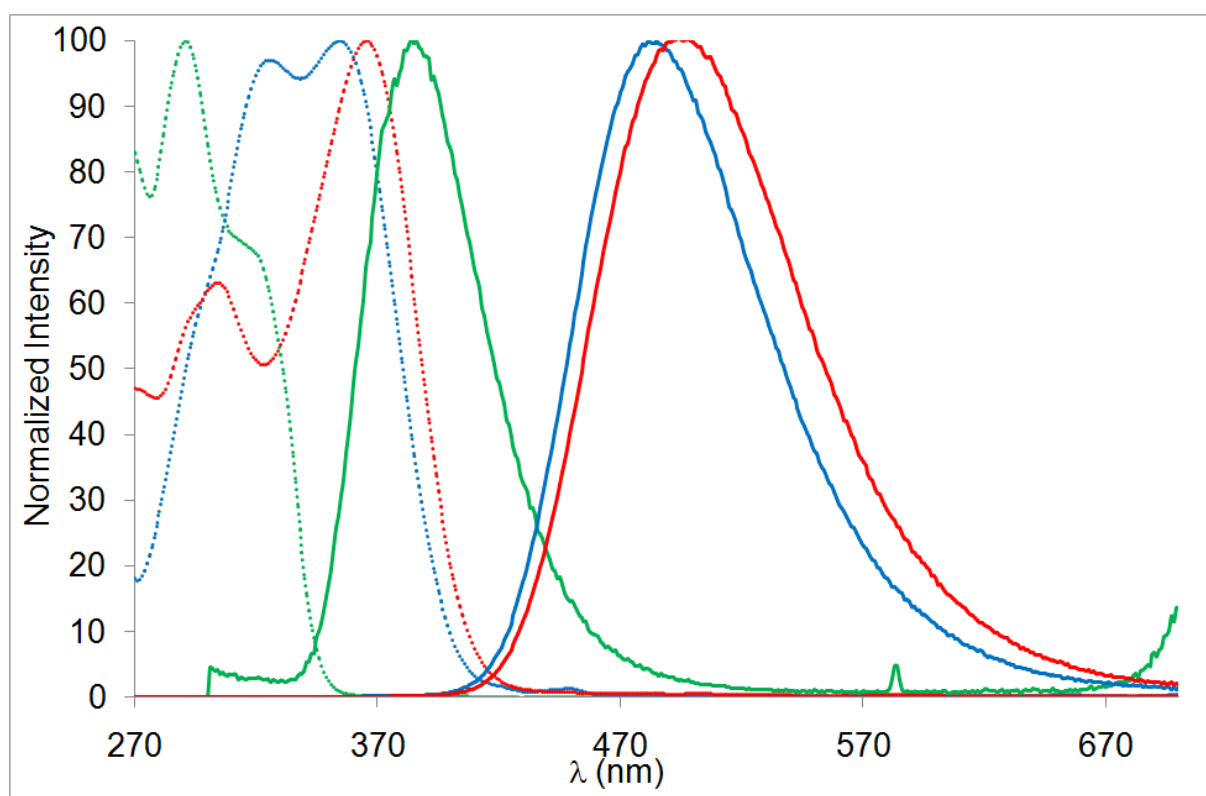


Figure S23: Normalized UV/Vis (dashed line) and emission spectra (solid lines) of compounds **4a** (green), **4b** (blue) and **4c** (red) in CH_2Cl_2 .

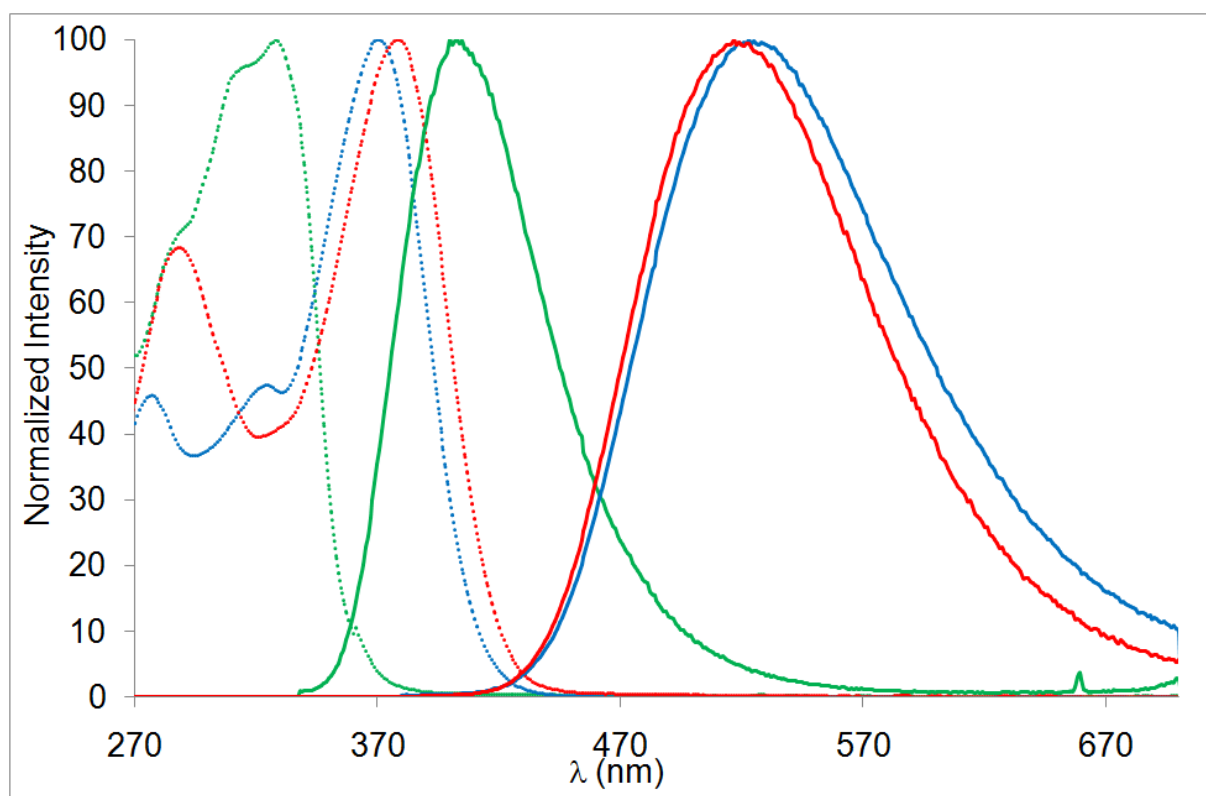


Figure S24: Normalized UV/Vis (dashed line) and emission spectra (solid lines) of compounds **5a** (green), **5b** (blue) and **5c** (red) in CH_2Cl_2 .

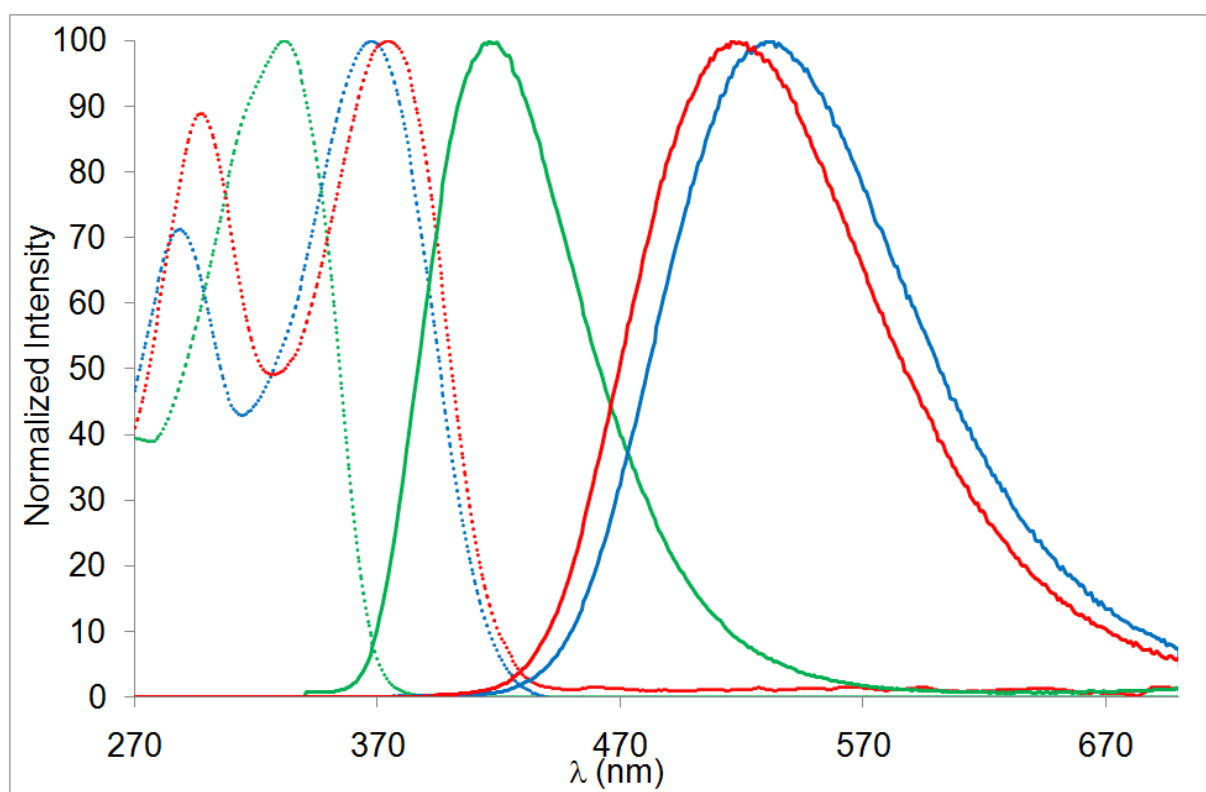


Figure S25: Normalized UV/Vis (dashed line) and emission spectra (solid lines) of compounds **6a** (green), **6b** (blue) and **6c** (red) in CH_2Cl_2 .

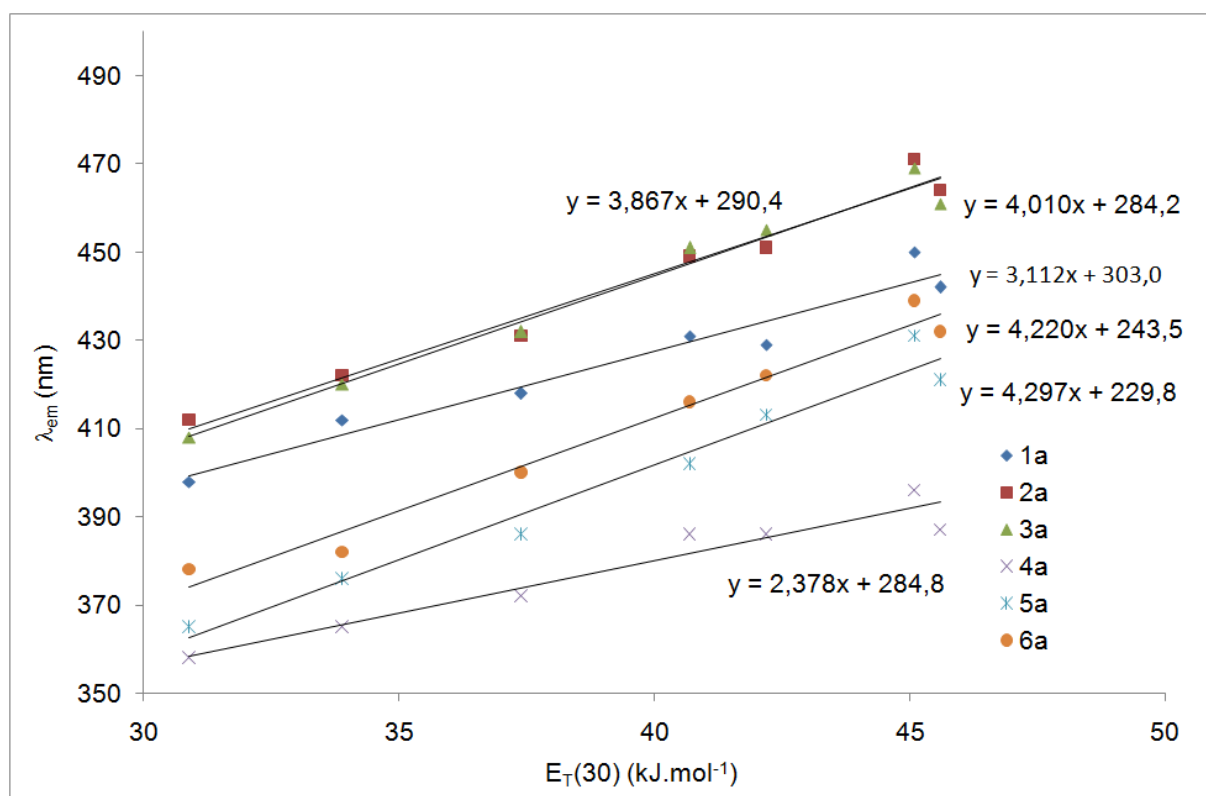


Figure S26: Emission maxima (λ_{em}) as a function of Dimroth-Reichardt polarity parameter for methoxy derivatives **1a**, **2a**, **3a**, **4a**, **5a**, and **6a**.

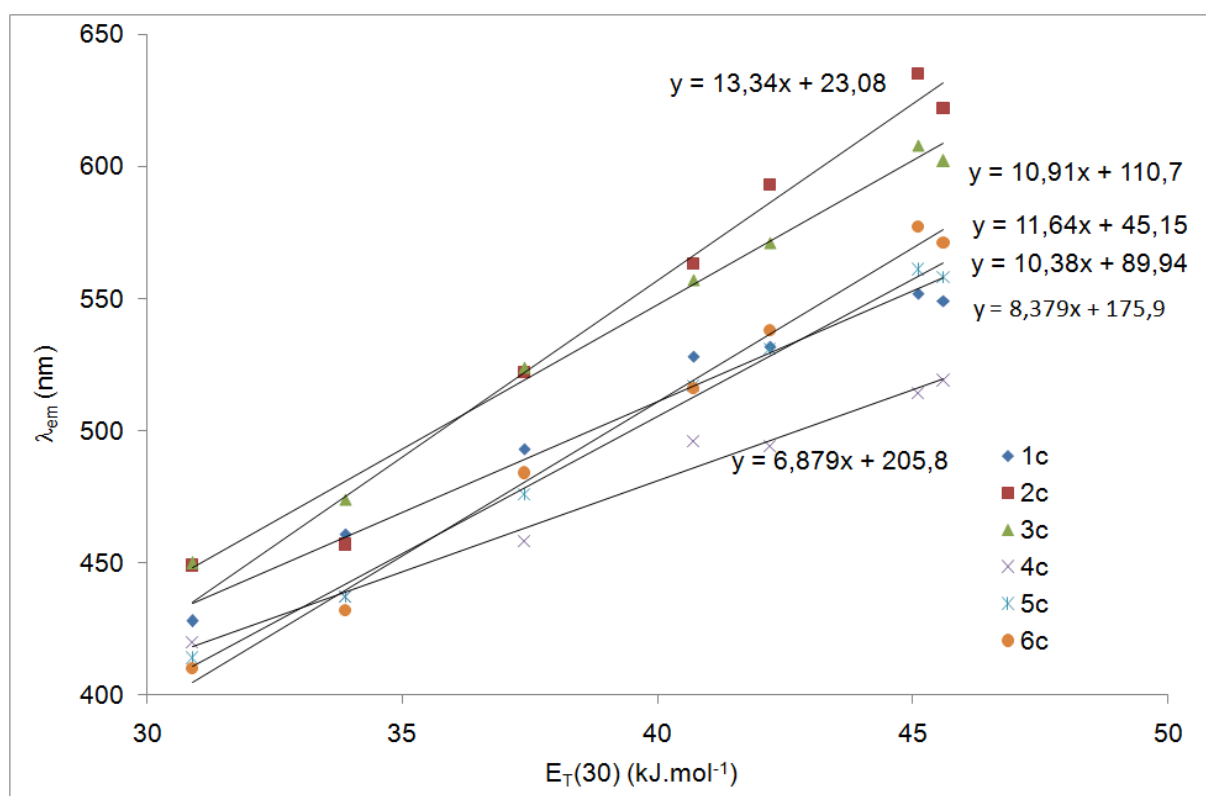


Figure S27: Emission maxima (λ_{em}) as a function of Dimroth-Reichart polarity parameter for diphenylamino derivatives **1c**, **2c**, **3c**, **4c**, **5c**, and **6c**.