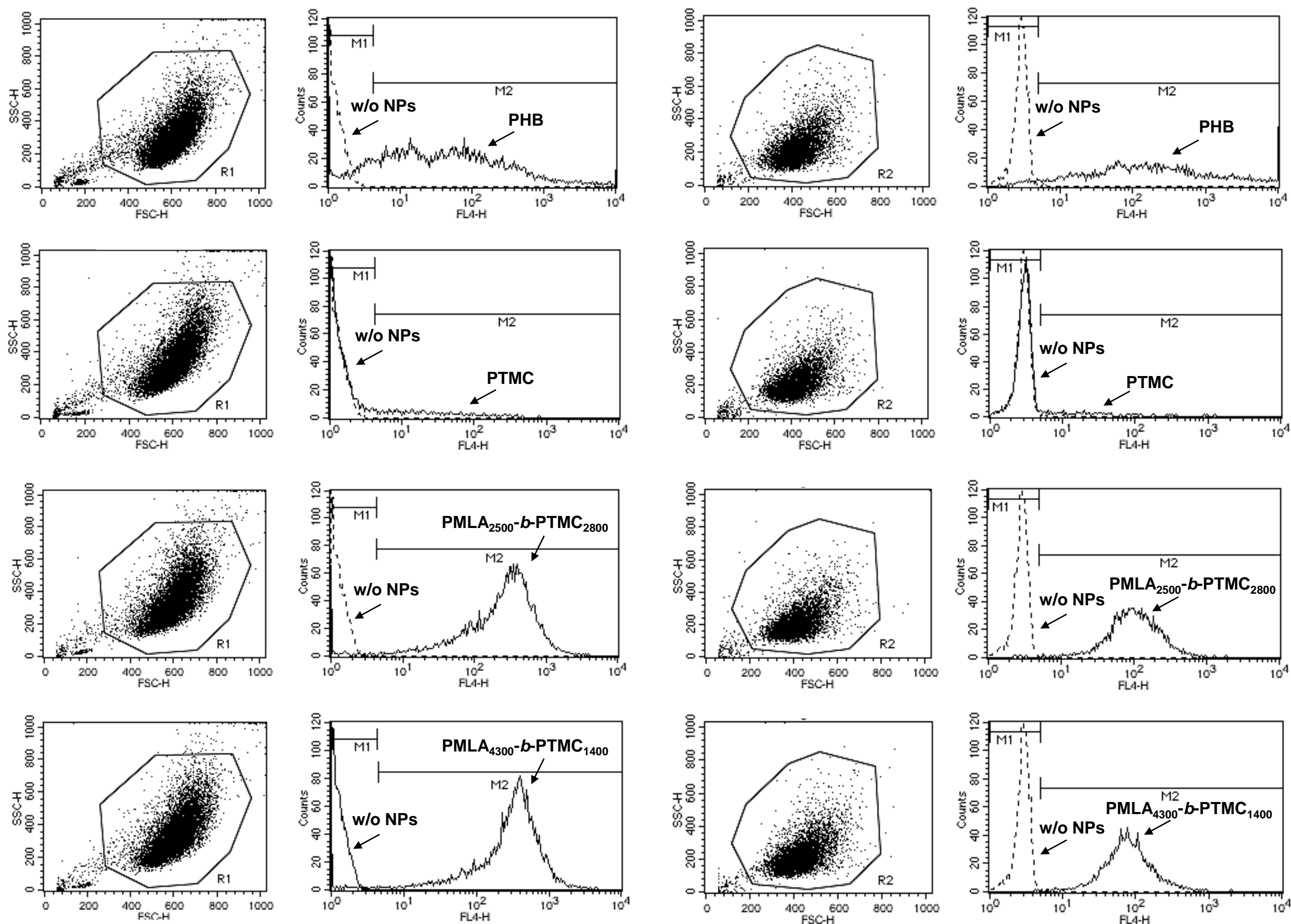


Macrophages

HepaRG cells



Supplementary data 1: Visualisation of the uptake of NPs derived from PHB and PTMC homopolymers and PMLA-b-PTMC copolymers in primary macrophages and HepaRG hepatoma cells by flow cytometry. The flow cytometry analysis was performed using 10^5 gated viable cells (gate R1 on the side scatter versus forward scatter dot plots). The intrinsic FL4-H fluorescence of macrophages and HepaRG cells was set up using cells that were not incubated with NPs (w/o NPs, dotted line histograms) to define the M1 gate corresponding to negative cells. The fluorescence of macrophages and HepaRG cells incubated with DiD oil loaded NPs prepared from PHB and PTMC homopolymers, PMLA₂₅₀₀-b-PTMC₂₈₀₀ and PMLA₄₃₀₀-b-PTMC₁₄₀₀ copolymers was measured using the FL4-H channel to identify the positive cells in the M2 gate (solid line histograms).