



HAL
open science

Subsocial Cockroaches *Nauphoeta cinerea* Mate Indiscriminately with Kin Despite High Costs of Inbreeding

Sofia Bouchebti, Virginie Durier, Cristian Pasquaretta, Colette Rivault, Mathieu Lihoreau

► **To cite this version:**

Sofia Bouchebti, Virginie Durier, Cristian Pasquaretta, Colette Rivault, Mathieu Lihoreau. Subsocial Cockroaches *Nauphoeta cinerea* Mate Indiscriminately with Kin Despite High Costs of Inbreeding. PLoS ONE, 2016, 11 (9), pp.e0162548. <10.1371/journal.pone.0162548>. <hal-01370137>

HAL Id: hal-01370137

<https://univ-rennes.hal.science/hal-01370137v1>

Submitted on 22 Sep 2016

HAL is a multi-disciplinary open access archive for the deposit and dissemination of scientific research documents, whether they are published or not. The documents may come from teaching and research institutions in France or abroad, or from public or private research centers.

L'archive ouverte pluridisciplinaire **HAL**, est destinée au dépôt et à la diffusion de documents scientifiques de niveau recherche, publiés ou non, émanant des établissements d'enseignement et de recherche français ou étrangers, des laboratoires publics ou privés.



HAL Authorization

RESEARCH ARTICLE

Subsocial Cockroaches *Nauphoeta cinerea* Mate Indiscriminately with Kin Despite High Costs of Inbreeding

Sofia Bouchebti^{1*}, Virginie Durier², Cristian Pasquaretta¹, Colette Rivault², Mathieu Lihoreau¹

1 Research Center on Animal Cognition (CRCA), Center for Integrative Biology (CBI), University of Toulouse, CNRS, UPS, Toulouse, France, **2** CNRS UMR 6552 Ethologie Animale et Humaine, Université de Rennes 1, Avenue du Général Leclerc, Rennes, France

* sofia.bouchebti@gmail.com



Abstract

Many animals have evolved strategies to reduce risks of inbreeding and its deleterious effects on the progeny. In social arthropods, such as the eusocial ants and bees, inbreeding avoidance is typically achieved by the dispersal of breeders from their native colony. However studies in presocial insects suggest that kin discrimination during mate choice may be a more common mechanism in socially simpler species with no reproductive division of labour. Here we examined this possibility in the subsocial cockroach *Nauphoeta cinerea*, a model species for research in sexual selection, where males establish dominance hierarchies to access females and control breeding territories. When given a binary choice between a sibling male and a non-sibling male that had the opportunity to establish a hierarchy prior to the tests, females mated preferentially with the dominant male, irrespective of kinship or body size. Despite the lack of kin discrimination during mate choice, inbred-mated females incurred significant fitness costs, producing 20% less offspring than outbred-mated females. We discuss how the social mating system of this territorial cockroach may naturally limit the probability of siblings to encounter and reproduce, without the need for evolving active inbreeding avoidance mechanisms, such as kin recognition.

OPEN ACCESS

Citation: Bouchebti S, Durier V, Pasquaretta C, Rivault C, Lihoreau M (2016) Subsocial Cockroaches *Nauphoeta cinerea* Mate Indiscriminately with Kin Despite High Costs of Inbreeding. PLoS ONE 11(9): e0162548. doi:10.1371/journal.pone.0162548

Editor: Peter Schausberger, University of Vienna, AUSTRIA

Received: February 4, 2016

Accepted: August 24, 2016

Published: September 21, 2016

Copyright: © 2016 Bouchebti et al. This is an open access article distributed under the terms of the [Creative Commons Attribution License](https://creativecommons.org/licenses/by/4.0/), which permits unrestricted use, distribution, and reproduction in any medium, provided the original author and source are credited.

Data Availability Statement: All relevant data are within the paper and its Supporting Information files.

Funding: This work was funded by the CNRS. While writing, ML was supported by two IDEX grants of the Federal University of Toulouse and a research grant from the Fyssen foundation.

Competing Interests: The authors have declared that no competing interests exist.

Introduction

Inbreeding—the reproduction of closely related individuals—increases homozygosity and the expression of deleterious recessive alleles, often resulting in a reduction of fitness traits in the progeny known as inbreeding depression [1,2]. On the other hand, theoretical models also predict that inbreeding can have substantial positive effects on the parent’s inclusive fitness by increasing their representation of genes identical by descent in future generations [3–5]. As the costs of inbreeding depression and the kin-selected benefits of inbreeding do not necessarily cancel out, their balance is expected to determine whether animals should actively avoid or favour mating with their kin [3–7].

As such, many animal species that incur particularly high costs of inbreeding depression, from snails to primates, have evolved strategies to avoid inbreeding [8,9]. These include pre-copulatory mechanisms that reduce the probability of mating with kin, such as the asynchronous maturation of the sexes [10,11], the dispersal of individuals from their native group [12–15], the copulation of females with several males (polyandry) [16–18] or kin discrimination during mate choice [19,20]. Alternatively, post-copulatory mechanisms can reduce the fertilisation success of inbred matings, such as male-female gamete incompatibility [21,22] or cryptic female choice (e.g. when females prevent complete ejaculation, discard sperm, or reduce the number of offspring produced) [23–26]. These mechanisms are particularly important in group-living animals, when individuals are the most likely to encounter close relatives and mate with them [2,8,9].

Arthropods are no exception [27]. In the advanced eusocial insects, characterised by overlaps of adults generations, cooperative brood care and reproductive division of labour [28], inbreeding avoidance is typically achieved via the dispersal of reproductive individuals (gynes and/or males) from their native colony (e.g. ants [29–31], honeybees [32], wasps [33], termites [34]; but see [35,36]). However, much less is known about inbreeding avoidance in the vast majority of less social (presocial, sensu [28]) arthropod species that exhibit no reproductive division of labour and only low levels of cooperation [37,38]. Studies in presocial insects (e.g. leaf beetles [39], field crickets [40], domiciliary cockroaches [41]) and some other arthropods (e.g. spider mites [42]) suggest that kin recognition—the ability to discriminate conspecifics based on relatedness [43]—is a common mechanism for inbreeding avoidance in socially simpler species. In these social groups where all individuals can potentially reproduce and show limited dispersal, the risks of incestuous matings are particularly high. For instance, in the German cockroach (*Blattella germanica*), that live in large mixed-family aggregations [44], kin recognition enables males and females to reject siblings as potential mating partners [45], thereby avoiding important fitness costs in the form of reduced offspring production [41,46]. Kin recognition is mediated by the perception of quantitative variations of odour profiles (cuticular hydrocarbons) correlated with relatedness, allowing for the discrimination of fine scale differences in genetic similarity [47,48].

The Blattodea (cockroaches and termites) is a relatively overlooked but fundamentally interesting phylogenetic group for comparative research on the evolution of social and mating systems due to their wide spectrum of social lifestyles, from solitary to eusocial species [38,44,49]. Beyond *B. germanica*, most knowledge of sexual selection in cockroaches comes from mate choice studies on the subsocial (sensu [28]) species *Nauphoeta cinerea* [50–56]. In *N. cinerea*, males establish dominance hierarchies through agonistic interactions [57] and dominant males advertise their status by secreting a sex pheromone attractive to females [58]. Previous studies show that females preferentially mate with dominant males, because they produce larger quantities of sex pheromone and display a more intense sexual courtship [50,51,59] (but see [60]). Although mate choice by *N. cinerea* has been intensively studied in the lab, the social and genetic structures of field populations are poorly documented [61], and potential mechanisms involved in the regulation of inbreeding levels still have to be evidenced. In this ovoviviparous cockroach, males and females have a synchronous development [61], females typically mate once [62] (but may occasionally re-mate between producing clutches [63]), and neither males nor females are known to disperse [61]. Therefore we hypothesised that kin discrimination during mate choice would be an efficient mechanism for inbreeding avoidance in this species.

Here we examined this possibility by testing the influence of kinship on mate choice in *N. cinerea*. We conducted female mate choice experiments in which we manipulated the kinship and the hierarchical status of males. We then evaluated the consequences of inbreeding by monitoring the lifetime reproductive success of females in the different types of matings.

Materials and Methods

Insect culture

Three commercial colonies of 50 *N. cinerea* cockroaches each were obtained (Envie Animale, St Jacques de la Lande, France), mixed and cultured in a single rearing cage (80cm long, 30cm large, 120cm high) in which males and females could freely mate (sex ratio 1:1). Cockroaches were maintained under standard laboratory conditions (25°C, 60% humidity, 12:12 light:dark photoperiod, light on at 10:00 pm) with *ad libitum* access to shelters (cardboard cylinders), food (turkey food pellets) and water. The culture was established 18 months (ca. three generations of adults) before the beginning of the experiments.

To obtain experimental subjects of known age and kinship, we collected a random sample of ca. 100 females from the main culture consisting of ca. 100000 individuals and isolated them in individual plastic rearing boxes (8cm Ø, 5cm high) until they produced their first clutch. Nymphs from the same clutch were full-siblings (coefficient of relatedness = 0.5) [64]. Nymphs from different clutches were non-siblings of unknown relatedness. Newborn nymphs were transferred into a new rearing box and bred in groups of siblings until adulthood (ca. 100 days). Therefore, in this design, siblings were also familiar and non-siblings were non-familiar. Young adults (one to two days after the imaginal moult) were sexed, uniquely identified with enamel paint on the pronotum (Fig 1), and isolated in individual rearing boxes. Cockroaches were maintained in these conditions for 10 days so that they could reach sexual maturation, while making sure that they all remained virgin until being tested.

Mate choice experiments

All observations were made under red light (which is not detected by cockroaches [65]) during the cockroach activity peak [66], i.e. the first two hours of the dark phase of the photoperiod (10:00–12:00 am). Tests were conducted in two phases.

During the first phase of the tests, two non-sibling males were introduced into a clear plastic arena (30 cm long, 30 cm large, 8 cm high) and observed for 20 min ($N = 131$ dyads). All interactions between the two males were recorded to calculate a dominance index D for each dyad [57]:

$$D = \frac{Im_1 - Im_2}{Im_1 + Im_2}$$

Where I_{mi} is the total number of agonistic interactions (bites, jumps over) initiated by male i . Male 1 was dominant when $D \geq 0.75$. Male 2 was dominant when $D \leq -0.75$. No hierarchy was established when $-0.75 < D < 0.75$. In this case, the males had no hierarchical status.

In the second phase of the tests, a female (sibling to one of the two males) was introduced in each arena, yielding three types of triads: (1) a female with a dominant sibling and a subordinate non-sibling ($N = 48$ triads), (2) a female with a no-status sibling and a no-status non-sibling ($N = 34$ triads), (3) a female with a subordinate sibling and a dominant non-sibling ($N = 49$ triads). Each triad was observed for 20 min for mating to occur. The 131 females mated within this period. Triads for which mating was initiated but not completed within the 20 min (i.e. the female was still paired to the male) were observed until the end of copulation (range of copulation duration: 6.7–18.5 min, $N = 131$ copulations). For each triad, we recorded the sexual displays of males (antennal contacts with the female, wing raising; Fig 1A), the mating attempts of females (female climbing onto the male's abdomen and licking abdominal secretions; Fig 1B), the duration of copulation (time spent paired; Fig 1C) and any interference of the non-copulating male with the copulating pair that could have induced a premature end

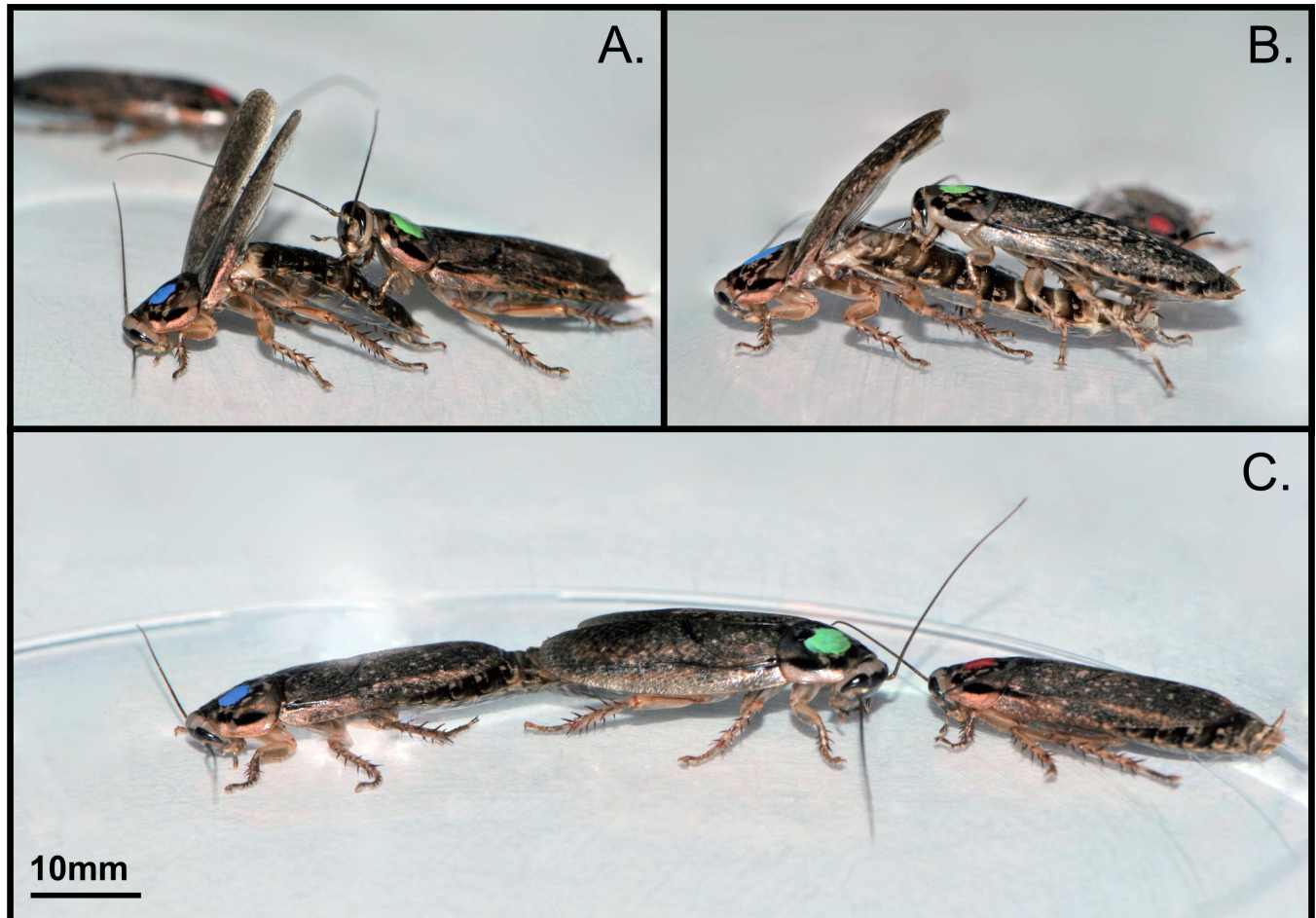


Fig 1. Succession of behavioural acts during mate choice in *Nauphoeta cinerea*. In this example, a virgin female (green dot on the pronotum) is given a choice between two males (blue and red). (A) After having initiated antennal contacts with the female, the courting male (blue) turns around in front of the female and raises its wings so that the female can mount on the male's abdomen. (B) The female licks the abdominal secretions from the male's tergal glands while the male pushes his abdomen further back to grasp the female's genitalia. (C) Copulation lasts for approximately 15 minutes during which the male and the female remain paired in straight-line opposite position, allowing for the formation and transfer of a spermatophore into the female's genital tract. In this example, the non-copulating male (red) initiates antennal contacts with the female during mating. Photographs by SB.

doi:10.1371/journal.pone.0162548.g001

of the copulation [46] (Fig 1C). We never observed any aggressive interactions (bites, jumps over) between males and females before or during mating. During the tests, the experimenter was blind as to the dominance status of males and their relatedness to females.

Trials were stopped immediately after copulation, which guaranteed that each female mated only once. Males were removed from the arena and measured under light CO₂ anaesthesia. The maximal head width and the length of the left mesothoracic femur were used to estimate body size [67]. Precise measures (± 0.01 mm) were obtained from images of heads and legs taken under a binocular microscope (x 25), using a homemade software [68]. Each cockroach was tested only once.

Reproductive success of pairs

We observed 131 copulations across six types of pairs (see details in Table 1). Mated females were maintained isolated in the test arenas and moved to a breeding room with *ad libitum*

Table 1. Total number of matings. We observed 131 females mating with six types of males: a dominant sibling, a dominant non-sibling, a no-status sibling, a no-status non-sibling, a subordinate sibling or a subordinate non-sibling. Overall, females mated more often with dominant males than with subordinate males irrespective of kinship.

	Sibling	Non-sibling	Total
Dominant	35 (26.7%)	38 (29%)	73 (55.7%)
No-status	17 (13%)	17 (13%)	34 (26%)
Subordinate	11 (8.4%)	13 (9.9%)	24 (18.3%)
Total	63 (48.1%)	68 (51.9%)	131 (100%)

doi:10.1371/journal.pone.0162548.t001

access to food and water. The room was free of males to prevent male pheromones from interfering with the development of clutches [55]. To estimate the reproductive success of pairs, we recorded the number of offspring produced by each female on a daily basis until all females died (survival range: 54–523 days, $N = 131$ females). Newborn nymphs were removed from the arenas to avoid potential differences in the metabolic rate of gestating females due to group size effects (e.g. increased ambient temperature inducing faster gestation in arenas containing large clutches) [68]. During data collection, the experimenter was blind as to whether females had mated with a sibling or a non-sibling male.

Data analyses

All statistical analyses were conducted in R version 2.12.1 [69]. Means are given with standard errors (mean \pm SE). Raw data are available in [S1 Dataset](#).

For the dominance analyses, we compared the relative difference in body size (head width, femur length) between the two males of a dyad, in dyads that established a hierarchy and dyads that did not establish a hierarchy, using Wilcoxon tests. For dyads with a hierarchy, we compared the body size of dominant and subordinate males using paired t-tests. We also compared the proportions of dyads in which the dominant and the subordinate males displayed the first agonistic behaviour using an exact binomial test (with a probability of success 0.5). We examined the correlation between the head width and the femur length of males with a Pearson's product-moment correlation.

For the mate choice analyses, we tested the effect of male dominance status (dominant, subordinate, no-status), male-female kinship (sibling, non-sibling) and male body size (head width) on their frequency of sexual displays (log-transformed to normality) using a generalised linear mixed effect model (GLMM) with triad identity nested within male type as random factor, with the function `lmer()` in the R package '*lme4*' [70]. We compared all possible models (all combinations of additive and interactive effects) using the Akaike information criterion corrected for small sample size (AICc) by applying the Maximum likelihood (ML) method and selected the model with the lowest AICc [71]. We tested the effect of male dominance status, male-female kinship and male body size on female mate choice (mated, non-mated) using a GLMM with triad identity as random factor, using the function `glmer()` in '*lme4*'. Binomial models were checked for overdispersion and considered valid when the residual deviance was within $\pm 10\%$ of the residual degree of freedom. We ran another multi-model inference based on AICc to assess the best fitted model for our data following the procedure previously described. To take into account the nested structure of the data, we applied pairwise comparison tests to analyse the differences occurring among all the classes of our categorical predictors to both models of frequency of sexual displays and of female mate choice with Tukey's honest significant difference (HSD) tests in the '*multcomp*' package in R [72].

We used exact binomial tests (with a probability of success 0.5) to compare the proportion of matings with dominant and subordinate males. We ran three-ways ANOVAs to test the influence of male hierarchical status, male body size or male-female kinship on the latency to copulation (log-transformed to normality) and on copulation durations. We compared the effects of male dominance status and male-female kinship on the frequency of interference behaviour using a generalized linear model (GLM) with binomial errors and an ANOVA on the selected model (using the Wald Chi-Square statistics) after controlling for overdispersion (see above). We compared the duration of copulations with and without interference using a t-test.

For the reproductive success analyses, we compared female longevity across the six types of matings using a Cox regression analysis with the function `coxph()` in the package `'survival'` [73]. We compared the proportion of fertile and sterile matings in inbred and outbred mating using a Pearson's Chi-Square test, and the copulation duration between fertile and sterile matings using a Wilcoxon test. We used a four-ways ANOVA to test the effect of female survival, male-female kinship, copulation duration, and male hierarchical status on the total number of clutches produced by females. We made pairwise comparisons of copulation durations, female survival, total number of clutches produced and total number of nymphs produced using t-tests. For multiple comparisons of the number of nymphs produced in each clutch, we used a Bonferroni correction.

Results

Dominance hierarchies

Two males were placed in a test arena and their interactions were recorded for 20 min ($N = 131$ dyads). By the end of the observations, dominance hierarchies were established in 74% of the dyads ($N = 97/131$; Table 1). In the other 26% of the dyads ($N = 34/131$), males were considered to have no hierarchical status.

On average, the two males of a dyad had a body size that differed by 4% (head width difference: $4.6 \pm 0.3\%$; femur length difference: $5.2 \pm 0.4\%$; $N = 131$ dyads). This relative difference in body size was similar whether males established a hierarchy or not, both for head width (hierarchy: $4.7 \pm 0.4\%$, $N = 97$ dyads; no hierarchy: $4.4 \pm 0.6\%$, $N = 34$ dyads; Wilcoxon test, $W = 1741$, $P = 0.631$) and femur length (hierarchy: $5.2 \pm 0.5\%$, $N = 97$ dyads; no hierarchy: $5.3 \pm 0.6\%$, $N = 34$ dyads; Wilcoxon test, $W = 1529$, $P = 0.53$). When only considering the 97 dyads in which a hierarchy was established, we found no difference in head width (dominant: 4.33 ± 0.02 mm; subordinate: 4.31 ± 0.02 mm, $N = 97$ dyads; paired t-test, $t_{96} = -0.56$, $P = 0.578$) nor femur length (dominant: 4.65 ± 0.02 mm, subordinate: 4.63 ± 0.02 mm, $N = 97$ dyads; paired t-test, $t_{96} = 0.45$, $P = 0.654$) between dominant and subordinate males.

Analysis of the sequences of male-male interactions indicates that the male that displayed the first agonistic behaviour became dominant in 83.5% of the dyads (dominants: $N = 81$ dyads, subordinates: $N = 16$ dyads, binomial test, $P < 0.001$). These results confirm previous observations that the dominance status of *N. cinerea* males is not determined by body size [74], but merely by their tendency to initiate the fight [75]. Since our measures of head width and femur length were highly correlated (Pearson's product-moment correlation, $R = 0.81$, $t_{260} = 22.01$, $P < 0.001$), we only used head width as a proxy of body size in the following analyses.

Mate choice

A female was introduced in each arena containing two males and triads were observed for another 20 min. The total numbers of matings with each type of male are summarised in Table 1. On average, dominant males expressed more sexual displays (1.78 ± 0.16 , $N = 97$

Table 2. Multi-model selection procedure. We compared generalised linear mixed effects models (GLMM) with triad_ID nested in male type as random effect and the following combination of fixed effects: male dominance status (Dominance), kinship (Kin), male body size (Body Size), interaction between male dominance status and kinship, interaction between male body size and kinship, interaction between male body size and male dominant status. Number of parameters retained (K), Akaike information criterion weighted for small sample size (AICc), differences between AICc (Δ AICc) and normalized Akaike weights (wi) for each model are shown. Data are showed for sexual display and mate choice analyses.

Multi-model selection procedure for SEXUAL DISPLAY				
	K	AICc	Δ AICc	wi
Dominance	5	753.8	0	0.467
Dominance + Kin	6	755.7	1.92	0.179
Dominance + Body Size	6	755.7	1.98	0.173
Full model	12	767.0	13.26	0.001
Null model	3	769.4	15.63	0
Best model (Dominance)				
	Estimate	SE	P	
Intercept	0.339	0.119	0.004	
Dominance (N)	-0.537	0.193	0.005	
Dominance (S)	-1.193	0.201	<0.001	
Multi-model selection procedure for MATE CHOICE				
	K	AICc	Δ AICc	wi
Dominance	4	319.5	0	0.383
Dominance + Body Size	5	320.9	1.42	0.188
Dominance + Kin	5	321.2	1.70	0.164
Full model	11	330.8	11.31	0.001
Null model	2	367.3	47.75	0
Best model (Dominance)				
	Estimate	SE	P	
Intercept	1.112	0.235	<0.001	
Dominance (N)	-1.112	0.338	<0.001	
Dominance (S)	-2.225	0.332	<0.001	

doi:10.1371/journal.pone.0162548.t002

males) than no-status males (1.09 ± 0.16 , $N = 68$ males) and subordinate males (0.64 ± 0.16 , $N = 97$ males). This result held true when weighting for the nested structure of the data (Tukey HSD: dominants vs. no-status: estimate = 0.538, SE = 0.193, $P = 0.015$; dominants vs. subordinates: estimate = 1.193, SE = 0.201, $P < 0.001$; no-status vs. subordinates: estimate = 0.655, SE = 0.225, $P = 0.010$). Neither male-female kinship nor male body size had an effect on male sexual displays (Table 2). Female mate choice was significantly influenced by male dominance status but not by male-female kinship nor male body size (Table 2; Tukey HSD: dominant vs. no-status: estimate = 1.113, SE = 0.338, $P = 0.002$; dominant vs. subordinates: estimate = 2.227, SE = 0.333, $P < 0.001$; no-status vs. subordinates: estimate = 1.113, SE = 0.338, $P = 0.002$). Accordingly, when considering only the 97 triads in which males established a dominance hierarchy, females mated significantly more often with the dominant male than with the subordinate male (dominants: $N = 73$ matings, subordinates: $N = 24$ matings, binomial test, $P < 0.001$).

The dynamics of mate choice were similar across the six types of triads. On average, copulation started 227 ± 23 s ($N = 131$ matings) after the introduction of the female in the arena. The latency to copulation was neither influenced by male hierarchical status, nor by male body size, or by male-female kinship (Three-ways ANOVA, dominance status: $F_{2,123} = 0.17$, $P = 0.847$; head width: $F_{1,123} = 0.01$, $P = 0.963$; kinship: $F_{2,123} = 0.92$, $P = 0.401$; dominance status x head width: $F_{2,123} = 2.4$, $P = 0.095$). Although time spent copulating varied considerably between triads (range: 400 s– 1278 s; Fig 2), we found no effect of male dominance status, male body size or male-female kinship on copulation duration (Three-ways ANOVA, dominance status: $F_{2,123} = 0.78$, $P = 0.46$; head width: $F_{1,123} = 0.18$, $P = 0.674$; kinship: $F_{2,123} = 0.1$, $P = 0.372$; head width x kinship: $F_{2,123} = 3.07$, $P = 0.06$).

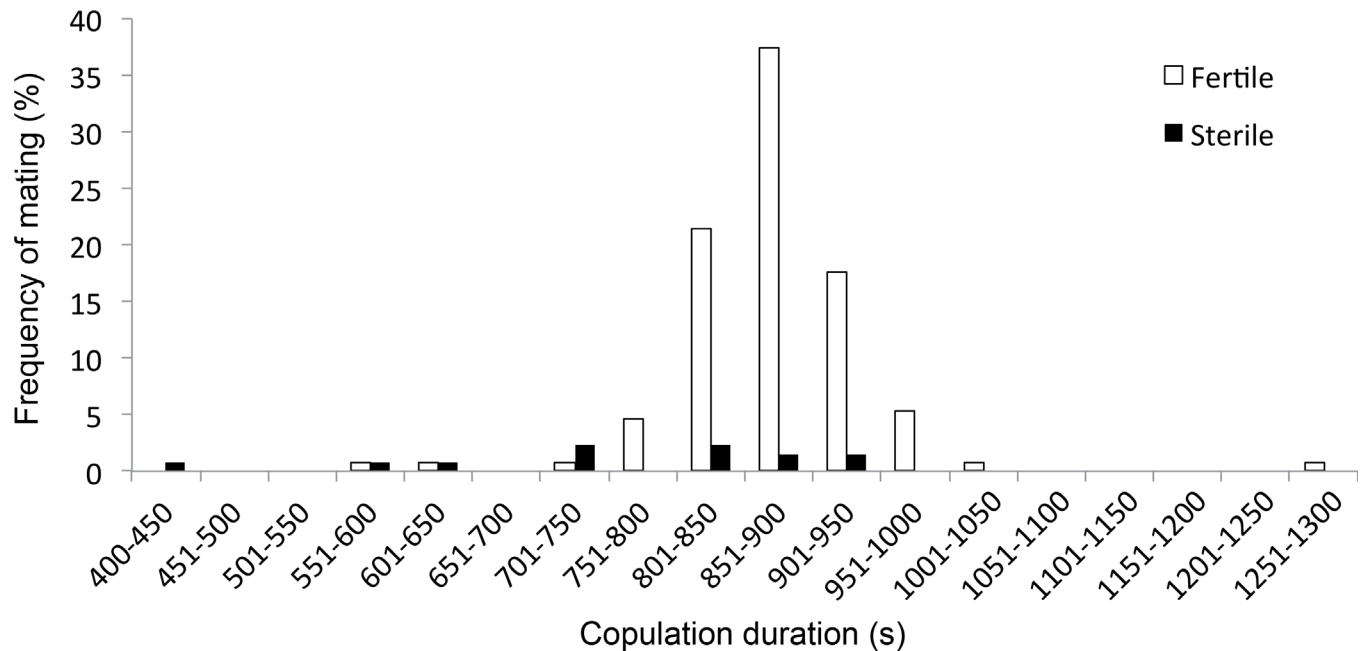


Fig 2. Frequency of fertile matings (white bars) and sterile matings (black bars) in relation to copulation duration. Females that copulated < 550 s never produced nymphs. Only 33% ($N = 3/9$) of the copulations that lasted ≤ 750 s were fertile in contrast to 94% ($N = 115/122$) for copulations that lasted > 750 s. $N = 131$ matings.

doi:10.1371/journal.pone.0162548.g002

The second (non-copulating) male interfered with the copulating pair in 42% of the triads ($N = 55/131$), by directing agonistic interactions (bites, jumps over) towards the pair. This behaviour was more frequently displayed by dominant males (70.8% of trials when females mated subordinates, $N = 17/24$), than by no-status males (47.1% of trials with triads with no hierarchy, $N = 16/34$) or by subordinate males (30.1% of trials when females mated with dominants, $N = 22/73$), irrespective of their kinship with the female (GLM with Binomial errors, dominance status: Deviance = 165.22, $df = 2, 126$, $P = 0.002$; kinship: Deviance = 178.10, $df = 2, 128$, $P = 0.939$; dominance status x kinship: Deviance = 161.19, $df = 3, 123$, $P = 0.258$). Copulations with interferences lasted significantly less than copulations without interferences (with interference: 825 ± 12 s, $N = 55$ triads; without interference: 887 ± 9 s, $N = 76$ triads; t-test: $t_{90,3} = -3.68$, $P < 0.001$). Presumably in these triads the presence of the second male disturbed and prematurely interrupted mating.

Reproductive success

Immediately after mating, males were removed from the arenas and females were maintained in isolation until they died (325 ± 8 days, $N = 131$ females) to record their lifetime offspring production. The survival of females was neither affected by male dominance status, nor by male body size, male-female kinship, or copulation duration (Analysis of Deviance on a Cox model; dominance status: $\chi^2 = 0.18$, $df = 2$, $P = 0.91$; head width: $\chi^2 = 2.77$, $df = 1$, $P = 0.096$; kinship: $\chi^2 = 0.27$, $df = 2$, $P = 0.529$; copulation duration: $\chi^2 = 0.93$, $df = 1$, $P = 0.335$).

Ninety per cent of the matings ($N = 118/131$) were fertile (i.e. producing at least one nymph). This proportion was similar for inbred matings and outbred matings (inbred: $N = 9/63$, outbred: $N = 4/68$, Pearson's Chi-Square test: $\chi^2 = 1.73$, $df = 1$, $P = 0.189$). However, copulation duration was significantly longer for fertile matings than for sterile matings (fertile: 875 ± 7 s, $N = 118$ matings; sterile: 735 ± 46 s, $N = 13$ matings; Wilcoxon test: $W = 345.5$,

$P = 0.001$). Only 33% ($N = 3/9$) of the copulations that lasted 750 s or less were fertile compared to 94% ($N = 115/122$) of the copulations that lasted longer than 750 s (Fig 2).

On average, females of the 118 fertile matings produced 3.42 ± 0.14 clutches. This total number of clutches produced by females was positively influenced by survival, but not by male-female kinship, copulation duration, or male dominance status (Four-ways ANOVA, survival: $F_{1,110} = 66.8$, $P < 0.001$; kinship: $F_{2,110} = 1.3$, $P = 0.277$; copulation duration: $F_{1,110} = 0.03$, $P = 0.856$; dominance status: $F_{2,110} = 2.95$, $P = 0.057$). The total number of nymphs produced by females was not only affected by their survival but also by their kinship with males (Four-ways ANOVA, survival: $F_{1,108} = 15.51$, $P < 0.001$; kinship: $F_{2,108} = 5.25$, $P = 0.007$; copulation duration: $F_{1,108} = 0.06$, $P = 0.814$; dominance status: $F_{2,108} = 2.35$, $P = 0.1$; survival x dominance status: $F_{2,108} = 3.06$, $P = 0.051$). Therefore, although inbred-mated and outbred-mated females had similar copulation durations (t-test, $t_{90,231} = 0.71$, $P = 0.48$; Fig 3A), similar survival (t-test: $t_{112,149} = -0.7$, $P = 0.485$; Fig 3B), and produced similar total numbers of clutches (t-test, $t_{115,849} = -0.08$, $P = 0.934$; Fig 3C), mating with a sibling reduced females' lifetime nymph production by 20% (t-test: $t_{111,15} = -3.05$, $P = 0.003$; Fig 3D). This negative effect of inbreeding on nymph production was significant from the first clutch (t-test, $t_{94,362} = -4.52$; $P < 0.001$) and accumulated with the production of all subsequent clutches (Fig 4).

Discussion

We examined the influence of kinship on mate choice in the subsocial cockroach *N. cinerea*. Using binary choice tests, we found that females mated preferentially with dominant males irrespective of their relatedness to them and despite significant costs of inbreeding on offspring production. Presumably, the social mating system of this territorial cockroach species limits the probability of sexually receptive siblings to encounter and mate, without the need for evolving kin recognition.

N. cinerea is a model species for research on insect sexual selection. Numerous previous studies showed that the competitive interactions between *N. cinerea* males [50–53,59], their production of sex pheromones [60,76] and their mating history [56,77] are key factors for female mate choice. Our analyses of male-male interactions corroborate these findings, showing that the dominance status of males is not determined by differences in body sizes [74] but mainly by their propensity to initiate the fight with competitors [75]. The resulting mate choices also confirm that dominant males express more sexual displays [74], and obtain significantly more matings than their subordinates, thereby emphasizing the fundamental role of male hierarchies in sexual selection for this species [50,51,59]. Building on these results, our study demonstrates that female mate choice is independent of their kinship with males. Thus contrary to *B. germanica*, where both sexes perform a mutual mate choice to avoid inbreeding [41,45,46], *N. cinerea* adults do not exhibit any detectable form of pre-copulatory kin discrimination, be it at the level of partner choice, female acceptance latency of males, or copulation duration. Yet, mating with a sibling reduced the reproductive success of pairs, as illustrated by the 20% decrease of the total numbers of nymphs produced by inbred-mated females. This effect of inbreeding, observable from the first generation of offspring, is comparable to the ca. 12% decrease measured in *B. germanica* using a similar experimental approach [41,45,46]. Although our measure of reproductive success cannot rule out whether these observed inbreeding effects are caused by a reduced gametic compatibility (less embryos produced), an increased developmental failure of the embryos (less viable nymphs produced) or both, inbreeding depression in *B. germanica* induces higher rates of embryo abortion [46], thus primarily supporting the hypothesis of a developmental failure.

The duration of copulation also had important consequences on offspring production in both inbred and outbred matings (33% of fertile matings for copulations ≤ 750 s in our

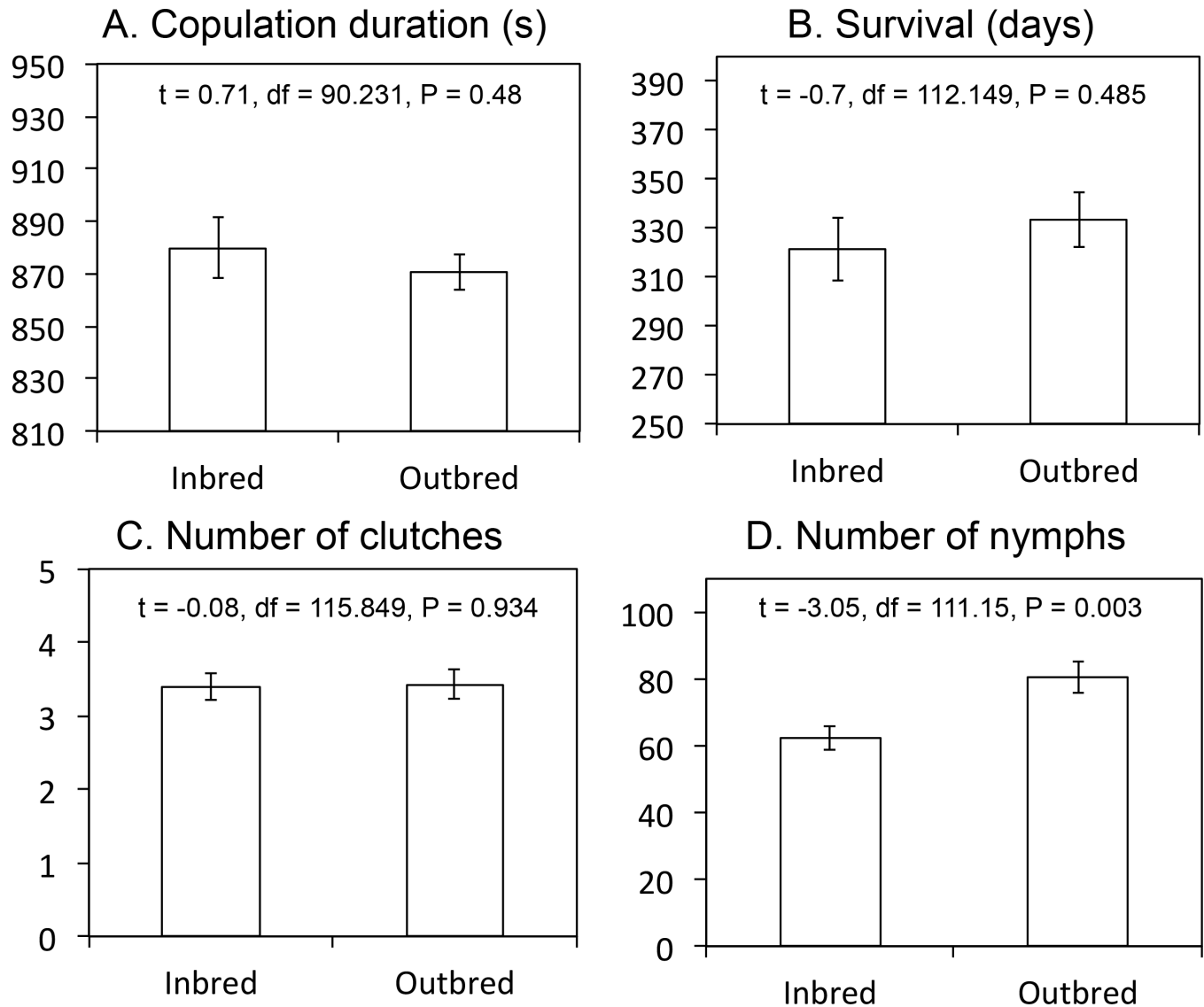


Fig 3. Reproductive success of pairs in inbred and outbred matings. Kinship between males and females neither affected (A) copulation duration, (B) female survival, nor (C) the total number of clutches produced. (D) Inbred-mated females produced a total of 20% less offspring than outbred-mated females during their entire lifetime. Means are showed with standard errors (mean \pm SE). N inbred = 56 females. N outbred = 61 females.

doi:10.1371/journal.pone.0162548.g003

experiment) suggesting that the production of a spermatophore (capsule containing sperm) by the male and its transmission to the female require a minimum mating duration. This is consistent with previous observations by Roth [62] reporting that the spermatophores of *N. cinerea* males were fully transferred and firmly inserted in the female's genital tract in only 27% of the copulations experimentally interrupted between 600 and 720 s. Interestingly, the non-copulating males frequently engaged in agonistic interactions towards the copulating pair, which tended to disturb copulations, reduce their duration, and thus potentially impact on the reproductive success of pairs. These competitive interactions during mating could explain why the durations of copulations by dominant males were not longer than those by subordinate males, a difference with previous mate choice studies that involved only one male [53] or when a second (non-copulating) male was physically separated from the copulating pair [50]. Again we

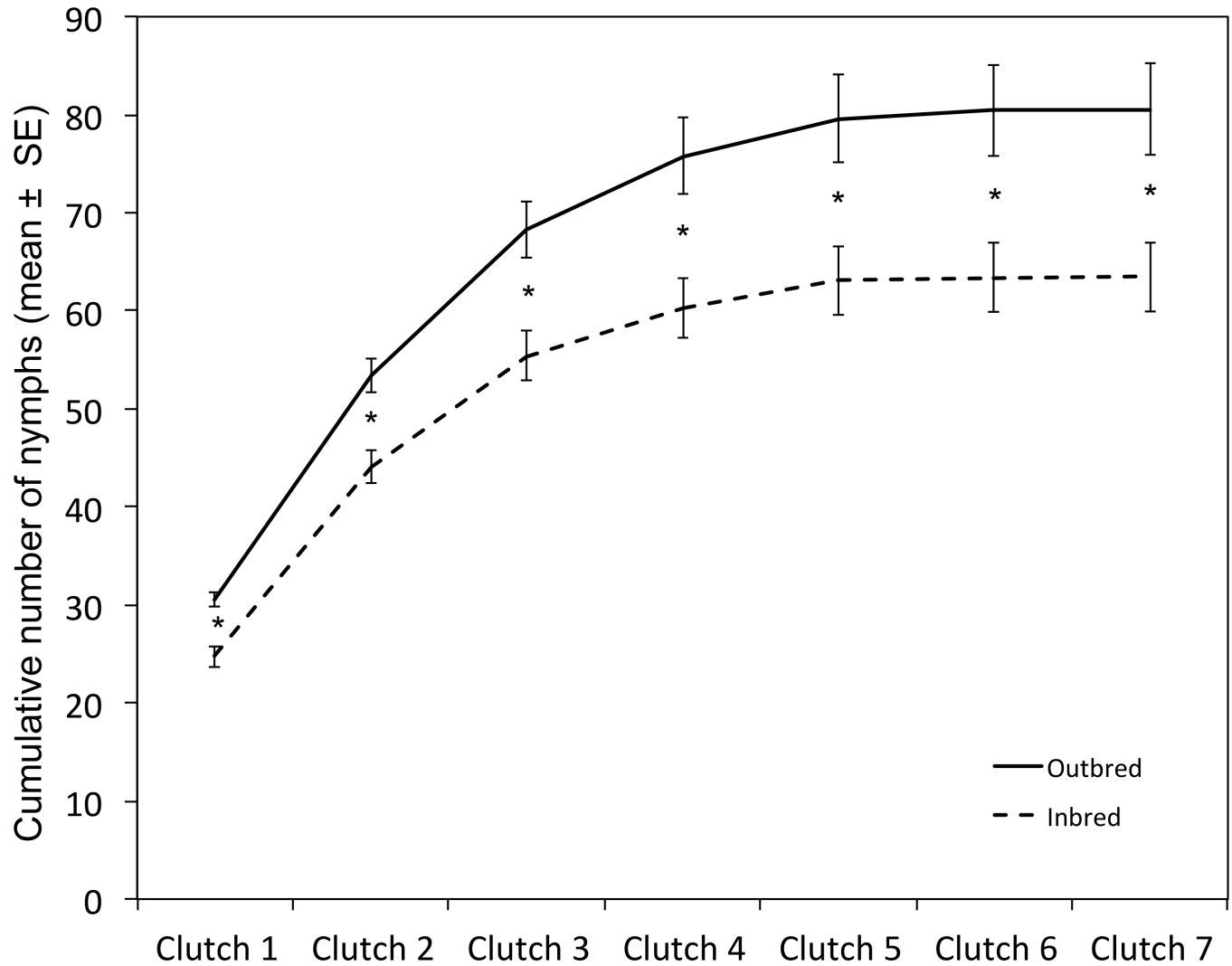


Fig 4. Dynamics of nymph production for inbred and outbred matings. Inbred-mated females produced 20% less nymphs than did outbred-mated females. This difference could be observed from the first clutch on and gradually increased as females produced more clutches. *N* inbred = 56 females. *N* outbred = 61 females. * $P < 0.007$ (pairwise comparisons with t-tests after a Bonferroni correction; clutch 1: $t_{94.362} = -4.52$, $P < 0.001$; clutch 2: $t_{114.664} = -3.83$, $P < 0.001$; clutch 3: $t_{113.976} = -3.38$, $P < 0.001$; clutch 4: $t_{110.14} = -3.17$, $P = 0.002$; clutch 5: $t_{110.095} = -2.92$, $P = 0.004$; clutch 6: $t_{109.288} = -2.91$, $P = 0.004$; clutch 7: $t_{109.244} = -2.90$, $P = 0.004$).

doi:10.1371/journal.pone.0162548.g004

found no evidence of kin discrimination during these interactions as non-copulating males interfered indiscriminately with all pairs, even though they potentially imposed a cost to their sisters by interrupting their copulation and thus reducing the probability of mating success. Whether such competitive interactions during mating are frequent in populations of freely interacting cockroaches, where more than two males may compete for the same female and unsuccessful males are free to stay or escape territories remains to be confirmed.

So why do these cockroaches mate indiscriminately? The relatively high costs of inbreeding depression observed in our study suggest that other mechanisms than kin recognition could mediate inbreeding avoidance in *N. cinerea*. Post-copulatory mechanisms such as cryptic female choice [78] are unlikely because females do not mate with multiple males in the same reproductive cycle [54,62]. Nonetheless, it remains to be tested whether inbred-mated females can use potential re-mating opportunities between producing clutches [63] to mate with non-

kin and mitigate the effects of inbreeding on their future clutches. Levels of mate choosiness may vary with age and future mating opportunities [79,80], as for instance in the field cricket *Gryllus lineaticeps* where younger females tend to be less choosy than older females [81].

Another possibility is that the structure of the *N. cinerea*'s social mating system itself provides pre-copulatory mechanisms that naturally limits encounters between sexually receptive kin and reduces the risks of inbreeding. For instance, the tendency of males to compete and establish dominance hierarchies ([66,82] see also this study) may induce some level of male dispersal from their native group. Although in artificially crowded confined space, such as laboratory or commercial cultures that can contain thousands of cockroaches per cubic meter, males show intense dominance interactions (reaching almost linear hierarchies where high rates of agonistic behaviour and numerous turn-overs of top-ranking males occur) [57,83], population densities are likely much lower in field conditions. Under low population densities (ca. 100 males/m³), males tend to occupy all the available space to establish non-overlapping territories, thus reducing the probability of sexually mature siblings to encounter [82]. Additionally, while females reproduce between their third and their sixth day post adult moult [62,84], only older males, aged over six days post adult moult, can potentially become dominants and therefore competitive for accessing mating partners [74]. The apparent mismatch between the reproductive dynamics of males and females may reduce the frequency of matings between siblings from the same clutch. It is also unlikely that males mate with siblings from different clutches since they remain dominants (and thus competitive for mating) for only two to three weeks [82] while the gestation time necessary for a female to produce two successive clutches typically lasts longer (e.g. 40 days at 28°C [77]).

Alternatively, it is possible that the costs of inbreeding are counterbalanced by other benefits until yet rarely considered in this species. Many animals tolerate incestuous mating despite severe inbreeding depression (great tits [85,86], dolphins [87], yellow-bellied marmots [88], house sparrows [89]), for instance when the probability to find unrelated mates is low [89,90] or when mating with siblings provides kin-selected benefits in the form of increased genetic representation in future generations [3–7]. In *N. cinerea*, females benefit from mating with dominant males that tend to produce more dominant sons [53]. Therefore it could be more advantageous for a female to mate with a dominant kin (that will provide less offspring but more dominant sons) rather to mate with a subordinate non-kin (that will provide more offspring but less dominant sons). Further experiments detailing the typical size, genetic composition and spatial structure of *N. cinerea* populations are needed to clarify the social ecology of these cockroaches and test these alternative hypotheses. Comparing the behaviour of cockroaches from different populations, in the lab and in the field, will be critical to address these questions as illustrated, for instance, by the contrasting results on kin recognition and inbreeding avoidance reported in various *Drosophila* strains (e.g. [91–95]).

Evidence for kin recognition in presocial insects is scarce (e.g. [39,41]) but has also received relatively little attention [20,27,37,38]. Although our experiments could not demonstrate a discrimination between siblings and non-siblings during mate choice, it does not definitely rule out the existence of kin recognition in *N. cinerea*. For instance, kin discrimination may be observed in a different context when the costs of discrimination errors could be higher than the observed inbreeding depression, as for instance for avoiding kin cannibalism during periods of starvation [43,96,97]. Context dependent kin discrimination is common in the animal kingdom and has been modelled in the form of an acceptance threshold response [43,96,97]. For example, in the eusocial colonies of paper wasps *Polistes dominulus* [98] and Argentine ants *Linepithema humile* [99], aggression of non-kin (i.e. non-nestmates) is only observed in the presence of cues indicating the proximity of the colony (e.g. nestmates, nest fragments), a context when the costs of discrimination errors are the highest due to the risk of accepting

intruders in the nest. Context dependent discrimination can also be expressed at different developmental stages as in the subsocial European earwig *Forficula auricularia* where kin recognition odours are masked during the early developmental stages to prevent nepotistic conflicts between juveniles of different patriline, but are revealed in adults to avoid incestuous mating [100]. Although relatively few studies have investigated social recognition systems in the Blattodea, more or less accurate forms of kin recognition have been described in subsocial [101], communal [41,45,46] and eusocial [102] species. Further examination of these mechanisms in cockroach and termite species presenting various levels of social complexity hold considerable promises for exploring the evolutionary relationships between communication, mating systems and social structures in arthropod societies.

Supporting Information

S1 Dataset. Raw data.

(XLSX)

Acknowledgments

We thank our great supervisor, colleague and friend, Colette Rivault, for guiding our first steps into science and showing us the way. We are also grateful to Ann Cloarec for commenting a previous version of the manuscript.

Author Contributions

Conceptualization: CR.

Formal analysis: SB CP ML.

Investigation: CR.

Methodology: CR.

Writing – original draft: SB VD ML.

Writing – review & editing: SB CP ML.

References

1. Keller LF, Waller DM. Inbreeding effects in wild populations. *Trends Ecol Evol.* 2002; 17: 230–241. doi: [10.1016/S0169-5347\(02\)02489-8](https://doi.org/10.1016/S0169-5347(02)02489-8)
2. Charlesworth D, Willis JH. The genetics of inbreeding depression. *Nat Rev Genet.* 2009; 10: 783–796. doi: [10.1038/nrg2664](https://doi.org/10.1038/nrg2664) PMID: [19834483](https://pubmed.ncbi.nlm.nih.gov/19834483/)
3. Parker GA. Sexual selection and sexual conflict. In: Blum MS, Blum NA (eds) *Sexual selection and reproductive competition in insects.* Academic, New-York, 1979. pp 123–166.
4. Kokko H, Ots I. When not to avoid inbreeding. *Evolution.* 2006; 60:467–475. doi: [10.1111/j.0014-3820.2006.tb01128.x](https://doi.org/10.1111/j.0014-3820.2006.tb01128.x) PMID: [16637492](https://pubmed.ncbi.nlm.nih.gov/16637492/)
5. Puurtinen M. Mate choice for optimal (k) inbreeding. *Evolution.* 2011; 65:1501–1505. doi: [10.1111/j.1558-5646.2010.01217.x](https://doi.org/10.1111/j.1558-5646.2010.01217.x)
6. Parker GA. Sexual conflict over mating and fertilization: an overview. *Philos Trans R Soc B.* 2006; 361:235–259. <http://dx.doi.org/10.1098/rstb.2005.1785>.
7. Lehmann L, Perrin N. Inbreeding avoidance through kin recognition: choosy females boost male dispersal. *Am Nat.* 2003; 162:638–652. doi: [10.1086/378823](https://doi.org/10.1086/378823) PMID: [14618541](https://pubmed.ncbi.nlm.nih.gov/14618541/)
8. Pusey A, Wolf M. Inbreeding avoidance in animals. *Trends Ecol Evol.* 1996; 11: 201–206. doi: [10.1016/0169-5347\(96\)10028-8](https://doi.org/10.1016/0169-5347(96)10028-8) PMID: [21237809](https://pubmed.ncbi.nlm.nih.gov/21237809/)
9. Blouin S, Blouin M. Inbreeding avoidance behaviors. *Trends Ecol Evol.* 1988; 3: 230–233. doi: [10.1016/0169-5347\(88\)90164-4](https://doi.org/10.1016/0169-5347(88)90164-4) PMID: [21227237](https://pubmed.ncbi.nlm.nih.gov/21227237/)

10. Morbey YE, Ydenberg RC. Protandrous arrival timing to breeding areas: a review. *Ecol Lett.* 2001; 4: 663–673. doi: [10.1046/j.1461-0248.2001.00265.x](https://doi.org/10.1046/j.1461-0248.2001.00265.x)
11. Dewsbury DA. Kin discrimination and reproductive behavior in muroid rodents. *Behav Genet.* 1988; 18: 525–536. doi: [10.1007/BF01065519](https://doi.org/10.1007/BF01065519) PMID: [3056389](https://pubmed.ncbi.nlm.nih.gov/3056389/)
12. Pusey AE. Sex-biased dispersal and inbreeding avoidance in birds and mammals. *Trends Ecol Evol.* 1987; 2: 295–299. doi: [10.1016/0169-5347\(87\)90081-4](https://doi.org/10.1016/0169-5347(87)90081-4) PMID: [21227869](https://pubmed.ncbi.nlm.nih.gov/21227869/)
13. Motro U. Avoiding inbreeding and sibling competition—the evolution of sexual dimorphism for dispersal. *Am Nat.* 1991; 137: 108–115. doi: [10.1086/285148](https://doi.org/10.1086/285148)
14. Gandon S. Kin competition, the cost of inbreeding and the evolution of dispersal. *J Theor Biol.* 1999; 200: 345–364. doi: [10.1006/jtbi.1999.0994](https://doi.org/10.1006/jtbi.1999.0994) PMID: [10525395](https://pubmed.ncbi.nlm.nih.gov/10525395/)
15. Guillaume F, Perrin N. Inbreeding load, bet hedging, and the evolution of sex-biased dispersal. *Am Nat.* 2009; 173: 536–541. doi: [10.1086/597218](https://doi.org/10.1086/597218) PMID: [19243259](https://pubmed.ncbi.nlm.nih.gov/19243259/)
16. Tregenza T, Wedell N. Polyandrous females avoid costs of inbreeding. *Nature.* 2002; 415: 71–73. doi: [10.1038/415071a](https://doi.org/10.1038/415071a) PMID: [11780118](https://pubmed.ncbi.nlm.nih.gov/11780118/)
17. Harano T, Katsuki M. Female seed beetles, *Callosobruchus chinensis*, remate more readily after mating with relatives. *Anim Behav.* 2012; 83: 1007–1010. doi: [10.1016/j.anbehav.2012.01.022](https://doi.org/10.1016/j.anbehav.2012.01.022)
18. Bayoumy MH, Michaud JP, Bain C. Polyandry restores female fertility and paternal effects diminished by inbreeding in *Hippodamia convergens*. *Ecol Entomol.* 2015; 40: 596–602. doi: [10.1111/een.12230](https://doi.org/10.1111/een.12230)
19. Bateson P. Sexual imprinting and optimal outbreeding. *Nature.* 1978; 273: 659–660. doi: [10.1038/273659a0](https://doi.org/10.1038/273659a0) PMID: [661972](https://pubmed.ncbi.nlm.nih.gov/661972/)
20. Breed MD. Kin and nestmate recognition: the influence of WD Hamilton on 50 years of research. *Anim Behav.* 2014; 92: 271–279. doi: [10.1016/j.anbehav.2014.02.030](https://doi.org/10.1016/j.anbehav.2014.02.030)
21. Tregenza T, Wedell N. Genetic compatibility, mate choice and patterns of parentage: Invited Review. *Mol Ecol.* 2000; 9: 1013–1027. doi: [10.1046/j.1365-294x.2000.00964.x](https://doi.org/10.1046/j.1365-294x.2000.00964.x) PMID: [10964221](https://pubmed.ncbi.nlm.nih.gov/10964221/)
22. Panhuis TM, Nunney L. Insight into post-mating interactions between the sexes: relatedness suppresses productivity of singly mated female *Drosophila melanogaster*. *J Evol Biol.* 2007; 20: 1988–1997. doi: [10.1111/j.1420-9101.2007.01363.x](https://doi.org/10.1111/j.1420-9101.2007.01363.x) PMID: [17714315](https://pubmed.ncbi.nlm.nih.gov/17714315/)
23. Bretman A, Wedell N, Tregenza T. Molecular evidence of post-copulatory inbreeding avoidance in the field cricket *Gryllus bimaculatus*. *Proc R Soc B.* 2004; 271: 159–164. doi: [10.1098/rspb.2003.2563](https://doi.org/10.1098/rspb.2003.2563) PMID: [15058392](https://pubmed.ncbi.nlm.nih.gov/15058392/)
24. Bretman A, Newcombe D, Tregenza T. Promiscuous females avoid inbreeding by controlling sperm storage. *Mol Ecol.* 2009; 18: 3340–3345. doi: [10.1111/j.1365-294X.2009.04301.x](https://doi.org/10.1111/j.1365-294X.2009.04301.x) PMID: [19694961](https://pubmed.ncbi.nlm.nih.gov/19694961/)
25. Tunj C, Beveridge M, Simmons LW. Female crickets assess relatedness during mate guarding and bias storage of sperm towards unrelated males. *J Evol Biol.* 2013; 26: 1261–1268. doi: [10.1111/jeb.12118](https://doi.org/10.1111/jeb.12118) PMID: [23745826](https://pubmed.ncbi.nlm.nih.gov/23745826/)
26. Firman RC, Simmons LW. Gametic interactions promote inbreeding avoidance in house mice. *Ecol Lett.* 2015; 18: 937–943. doi: [10.1111/ele.12471](https://doi.org/10.1111/ele.12471) PMID: [26154782](https://pubmed.ncbi.nlm.nih.gov/26154782/)
27. Tabadkani SM, Nozari J, Lihoreau M. Inbreeding and the evolution of sociality in arthropods. *Naturwissenschaften.* 2012; 99: 779–788. doi: [10.1007/s00114-012-0961-x](https://doi.org/10.1007/s00114-012-0961-x) PMID: [22915318](https://pubmed.ncbi.nlm.nih.gov/22915318/)
28. Wilson EO. *The Insect Societies.* Belknap Press of Harvard University Press; 1971.
29. Vitikainen EI, Haag-Liautard C, Sundström L. Natal dispersal, mating patterns, and inbreeding in the ant *Formica exsecta*. *Am Nat.* 2015; 186: 716–727. doi: [10.1086/683799](https://doi.org/10.1086/683799) PMID: [26655979](https://pubmed.ncbi.nlm.nih.gov/26655979/)
30. Keller L, Passera L. Incest avoidance, fluctuating asymmetry, and the consequences of inbreeding in *Iridomyrmex humilis*, an ant with multiple queen colonies. *Behav Ecol Sociobiol.* 1993; 33: 191–199. doi: [10.1007/BF00216600](https://doi.org/10.1007/BF00216600)
31. Blatrix R, Jaisson P. Absence of kin discrimination in a ponerine ant. *Anim Behav.* 2002; 64: 261–268. doi: [10.1006/anbe.2002.3048](https://doi.org/10.1006/anbe.2002.3048)
32. Beaupaire AL, Kraus BF, Koeniger G, Koeniger N, Lim H, Moritz RF. Extensive population admixture on drone congregation areas of the giant honeybee, *Apis dorsata* (Fabricius, 1793). *Ecol Evol.* 2014; 4: 4669–4677. doi: [10.1002/ece3.1284](https://doi.org/10.1002/ece3.1284) PMID: [25558361](https://pubmed.ncbi.nlm.nih.gov/25558361/)
33. Shilpa MC, Sen R, Gadagkar R. Nestmateship and body size do not influence mate choice in males and females: A laboratory study of a primitively eusocial wasp *Ropalidia marginata*. *Behav Processes.* 2010; 85: 42–46. doi: [10.1016/j.beproc.2010.06.004](https://doi.org/10.1016/j.beproc.2010.06.004) PMID: [20542096](https://pubmed.ncbi.nlm.nih.gov/20542096/)
34. Aguilera-Olivares D, Flores-Prado L, Véliz D, Niemeyer HM. Mechanisms of inbreeding avoidance in the one-piece drywood termite *Neotermes chilensis*. *Insectes Sociaux.* 2015; 62: 237–245. doi: [10.1007/s00040-015-0399-1](https://doi.org/10.1007/s00040-015-0399-1)

35. Foster R. Nestmate recognition as an inbreeding avoidance mechanism in bumble bees (hymenoptera, Apidae). *J Kans Entomol Soc.* 1992; 65: 238–243.
36. Whitehorn PR, Tinsley MC, Goulson D. Kin recognition and inbreeding reluctance in bumblebees. *Apidologie.* 2009; 40: 627–633. doi: [10.1051/apido/2009050](https://doi.org/10.1051/apido/2009050)
37. Fellowes MDE. Do non-social insects get the (kin) recognition they deserve? *Ecol Entomol.* 1998; 23: 223–227. doi: [10.1046/j.1365-2311.1998.00128.x](https://doi.org/10.1046/j.1365-2311.1998.00128.x)
38. Costa JT. *The other insect societies.* Harvard University Press; 2006.
39. Liu X, Tu X, He H, Chen C, Xue F. Evidence for inbreeding depression and pre-copulatory, but not post copulatory inbreeding avoidance in the cabbage beetle *Colaphellus bowringi*. *PloS One.* 2014; 9:e94389. doi: [10.1371/journal.pone.0094389](https://doi.org/10.1371/journal.pone.0094389) PMID: [24718627](https://pubmed.ncbi.nlm.nih.gov/24718627/)
40. Thomas ML, Simmons LW. Crickets detect the genetic similarity of mating partners via cuticular hydrocarbons. *J Evol Biol.* 2011; 24: 1793–1800. doi: [10.1111/j.1420-9101.2011.02319.x](https://doi.org/10.1111/j.1420-9101.2011.02319.x) PMID: [21649764](https://pubmed.ncbi.nlm.nih.gov/21649764/)
41. Lihoreau M, Zimmer C, Rivault C. Kin recognition and incest avoidance in a group-living insect. *Behav Ecol.* 2007; 18: 880–887. doi: [10.1093/beheco/arm046](https://doi.org/10.1093/beheco/arm046)
42. Tien NSH, Massourakis G, Sabelis MW, Egas M. Mate choice promotes inbreeding avoidance in the two-spotted spider mite. *Exp Appl Acarol.* 2011; 54: 119–124. doi: [10.1007/s10493-011-9431-y](https://doi.org/10.1007/s10493-011-9431-y) PMID: [21400191](https://pubmed.ncbi.nlm.nih.gov/21400191/)
43. Hepper PG. Recognizing kin: Ontogeny and classification. In: *Kin recognition.* New York, NY, US: Cambridge University Press; 1991. pp. 259–288.
44. Lihoreau M, Costa JT, Rivault C. The social biology of domiciliary cockroaches: colony structure, kin recognition and collective decisions. *Insectes Sociaux.* 2012; 59: 445–452. doi: [10.1007/s00040-012-0234-x](https://doi.org/10.1007/s00040-012-0234-x)
45. Lihoreau M, Zimmer C, Rivault C. Mutual mate choice: when it pays both sexes to avoid inbreeding. *Plos One.* 2008; 3: e3365. doi: [10.1371/journal.pone.0003365](https://doi.org/10.1371/journal.pone.0003365) PMID: [18843373](https://pubmed.ncbi.nlm.nih.gov/18843373/)
46. Lihoreau M, Rivault C. German cockroach males maximize their inclusive fitness by avoiding mating with kin. *Anim Behav.* 2010; 80: 303–309. doi: [10.1016/j.anbehav.2010.05.011](https://doi.org/10.1016/j.anbehav.2010.05.011)
47. Lihoreau M, Rivault C. Kin recognition via cuticular hydrocarbons shapes cockroach social life. *Behav Ecol.* 2009; 20: 46–53. doi: [10.1093/beheco/arm113](https://doi.org/10.1093/beheco/arm113)
48. Lihoreau M, Rivault C, van Zweden JS. Kin discrimination increases with odour distance in the German cockroach. *Behav Ecol.* 2016; Advance access. doi: [10.1093/beheco/arw099](https://doi.org/10.1093/beheco/arw099)
49. Bell WJ, Roth LM, Nalepa CA. *Cockroaches: ecology, behavior, and natural history.* JHU Press; 2007.
50. Moore AJ, Breed MD. Mate assessment in a cockroach, *Nauphoeta cinerea*. *Anim Behav.* 1986; 34: 1160–1165. doi: [10.1016/S0003-3472\(86\)80175-0](https://doi.org/10.1016/S0003-3472(86)80175-0)
51. Moore AJ. Female preferences, male social status, and sexual selection in *Nauphoeta cinerea*. *Anim Behav.* 1988; 36: 303–305. doi: [10.1016/S0003-3472\(88\)80278-1](https://doi.org/10.1016/S0003-3472(88)80278-1)
52. Moore AJ. Sexual selection in *Nauphoeta cinerea*: Inherited mating preference? *Behav Genet.* 1989; 19: 717–724. doi: [10.1007/BF01066033](https://doi.org/10.1007/BF01066033) PMID: [2803189](https://pubmed.ncbi.nlm.nih.gov/2803189/)
53. Moore AJ. The inheritance of social-dominance, mating-behavior and attractiveness. *Anim Behav.* 1990; 39: 388–397. doi: [10.1016/S0003-3472\(05\)80886-3](https://doi.org/10.1016/S0003-3472(05)80886-3)
54. Moore AJ, Gowaty PA, Wallin WG, Moore PJ. Sexual conflict and the evolution of female mate choice and male social dominance. *Proc R Soc B.* 2001; 268: 517–523. doi: [10.1098/rspb.2000.1399](https://doi.org/10.1098/rspb.2000.1399) PMID: [11296864](https://pubmed.ncbi.nlm.nih.gov/11296864/)
55. Moore AJ, Gowaty PA, Moore PJ. Females avoid manipulative males and live longer. *J Evol Biol.* 2003; 16: 523–530. doi: [10.1046/j.1420-9101.2003.00527.x](https://doi.org/10.1046/j.1420-9101.2003.00527.x) PMID: [14635853](https://pubmed.ncbi.nlm.nih.gov/14635853/)
56. Harris WE, Moore PJ. Female mate preference and sexual conflict: females prefer males that have had fewer consorts. *Am Nat.* 2005; 165: S64–S71. doi: [10.1086/429352](https://doi.org/10.1086/429352) PMID: [15795863](https://pubmed.ncbi.nlm.nih.gov/15795863/)
57. Bell WJ, Gorton RE. Informational analysis of agonistic behaviour and dominance hierarchy formation in a cockroach, *Nauphoeta Cinerea*. *Behaviour.* 1978; 67: 217–235. doi: [10.1163/156853978X00341](https://doi.org/10.1163/156853978X00341) PMID: [570036](https://pubmed.ncbi.nlm.nih.gov/570036/)
58. Roth LM, Dateo GP. A sex pheromone produced by males of the cockroach *Nauphoeta cinerea*. *J Insect Physiol.* 1966; 12: 255–265. doi: [10.1016/0022-1910\(66\)90140-5](https://doi.org/10.1016/0022-1910(66)90140-5)
59. Breed MD, Smith SK, Gall BG. Systems of mate selection in a cockroach species with male dominance hierarchies. *Anim Behav.* 1980; 28: 130–134. doi: [10.1016/S0003-3472\(80\)80017-0](https://doi.org/10.1016/S0003-3472(80)80017-0)
60. Moore AJ, Moore PJ. Balancing sexual selection through opposing mate choice and male competition. *Proc R Soc B.* 1999; 266: 711–716. doi: [10.1098/rspb.1999.0694](https://doi.org/10.1098/rspb.1999.0694)

61. Schal C, Gauthier J-Y, Bell WJ. Behavioural ecology of cockroaches. *Biol Rev.* 1984; 59: 209–254. doi: [10.1111/j.1469-185X.1984.tb00408.x](https://doi.org/10.1111/j.1469-185X.1984.tb00408.x)
62. Roth LM. Control of reproduction in female cockroaches with special reference to *Nauphoeta cinerea* —I. First pre-oviposition period. *J Insect Physiol.* 1964; 10: 915–945. doi: [10.1016/0022-1910\(64\)90082-4](https://doi.org/10.1016/0022-1910(64)90082-4)
63. Roth LM. Hypersexual activity induced in females of the cockroach *Nauphoeta cinerea*. *Science.* 1962; 138:1267–1269. doi: [10.1126/science.138.3546.1267](https://doi.org/10.1126/science.138.3546.1267) PMID: [17757783](https://pubmed.ncbi.nlm.nih.gov/17757783/)
64. Montrose VT, Harris WE, Moore PJ. Sexual conflict and cooperation under naturally occurring male enforced monogamy. *J Evol Biol.* 2004; 17: 443–452. doi: [10.1046/j.1420-9101.2003.00654.x](https://doi.org/10.1046/j.1420-9101.2003.00654.x) PMID: [15009277](https://pubmed.ncbi.nlm.nih.gov/15009277/)
65. Koehler P, Agee H, Leppla N, Patterson R. Spectral sensitivity and behavioral-response to light quality in the German cockroach (dictyoptera, Blattellidae). *Ann Entomol Soc Am.* 1987; 80: 820–822. doi: [10.1093/aesa/80.6.820](https://doi.org/10.1093/aesa/80.6.820)
66. Ewing LS. Territoriality and the influence of females on the spacing of males in the cockroach, *Nauphoeta cinerea*. *Behaviour.* 1973; 45:282–302. doi: [10.1163/156853974X00688](https://doi.org/10.1163/156853974X00688)
67. Lefeuvre JC. Sur une espèce nouvelle du genre *Gromphadorhina* (Dict. Perisphaerinae). *Ann Soc Entomol Fr.* 1966; 2: 731–746.
68. Lihoreau M, Rivault C. Tactile stimuli trigger group effects in cockroach aggregations. *Anim Behav.* 2008; 75: 1965–1972. doi: [10.1016/j.anbehav.2007.12.006](https://doi.org/10.1016/j.anbehav.2007.12.006)
69. R Core Team. R: A language and environment for statistical computing (R Foundation for Statistical Computing). Vienna, Austria. 2014.
70. Bates D, Mächler M, Bolker B, Walker S. Fitting linear mixed-effects models using lme4. *J Stat Softw.* 2014; 67:1–48. doi: [10.18637/jss.v067.i01](https://doi.org/10.18637/jss.v067.i01)
71. Burnham KP, Anderson DR. Model selection and multimodel inference: a practical information-theoretic approach, 2nd ed. Springer, New York; 2002.
72. Hothorn T, Bretz F, Westfall P. Multcomp: simultaneous inference in general parametric models. R package version 1.0–0. R Foundation for Statistical Computing, Vienna, Austria. 2008.
73. Therneau TM, Grambsch PM. Modeling survival data: extending the cox Model. Springer New York; 2000.
74. Schal C, Bell W. Determinants of dominant-subordinate interactions in males of the cockroach *Nauphoeta cinerea*. *Biol Behav.* 1983; 8:117–139.
75. Chou Szu-Ying ZYH. Antenna contact and agonism in the male lobster cockroach, *Nauphoeta cinerea*. *Horm Behav.* 2007; 52:252–60. doi: [10.1016/j.yhbeh.2007.04.013](https://doi.org/10.1016/j.yhbeh.2007.04.013) PMID: [17574250](https://pubmed.ncbi.nlm.nih.gov/17574250/)
76. Moore PJ, Reagan-Wallin NL, Haynes KF, Moore AJ. Odour conveys status on cockroaches. *Nature.* 1997; 389:25–25.
77. Edvardsson M, Hunt J, Moore PJ, Moore AJ. Female agreement over male attractiveness is not affected by cost of mating with experienced males. *Behav Ecol.* 2008; 19:854–859. doi: [10.1093/beheco/am047](https://doi.org/10.1093/beheco/am047)
78. Eberhard WG. Female control: sexual selection by cryptic female choice. Princeton University Press. 1996.
79. Pianka ER, Parker WS. Age-specific reproductive tactics. *Am Nat.* 1975; 109: 453–64.
80. Bretman A, Gage MJ, Chapman T. Quick-change artists: male plastic behavioural responses to rivals. *Trends Ecol Evol.* 2011; 26:467–473. doi: [10.1016/j.tree.2011.05.002](https://doi.org/10.1016/j.tree.2011.05.002) PMID: [21680050](https://pubmed.ncbi.nlm.nih.gov/21680050/)
81. Atwell A, Wagner WE. Female mate choice plasticity is affected by the interaction between male density and female age in a field cricket. *Anim Behav.* 2014; 98:177–183. doi: [10.1016/j.anbehav.2014.10.0](https://doi.org/10.1016/j.anbehav.2014.10.0)
82. Ewing LS. Hierarchy and its relation to territory in the cockroach *Nauphoeta cinerea*. *Behaviour.* 1972; 42: 152–174. doi: [10.1163/156853972X00158](https://doi.org/10.1163/156853972X00158)
83. Chen S-C, Yang R-L, Ho H-Y, Chou S-Y, Kou R. Strategic 3-hydroxy-2-butanone release in the dominant male lobster cockroach, *Nauphoeta cinerea*. *Naturwissenschaften.* 2007; 94:927–933. doi: [10.1007/s00114-007-0265-8](https://doi.org/10.1007/s00114-007-0265-8) PMID: [17585357](https://pubmed.ncbi.nlm.nih.gov/17585357/)
84. Moore PJ, Moore AJ. Reproductive aging and mating: the ticking of the biological clock in female cockroaches. *Proc Natl Acad Sci USA.* 2001; 98: 9171–9176. doi: [10.1073/pnas.161154598](https://doi.org/10.1073/pnas.161154598) PMID: [11470903](https://pubmed.ncbi.nlm.nih.gov/11470903/)
85. Szulkin M, Zelazowski P, Nicholson G, Sheldon BC. Inbreeding avoidance under different null models of random mating in the great tit. *J Anim Ecol.* 2009; 78: 778–788. doi: [10.1111/j.1365-2656.2009.01544.x](https://doi.org/10.1111/j.1365-2656.2009.01544.x) PMID: [19383076](https://pubmed.ncbi.nlm.nih.gov/19383076/)

86. Szulkin M, Garant D, McCleery RH, Sheldon BC. Inbreeding depression along a life-history continuum in the great tit. *J Evol Biol.* 2007; 20:1531–1543. doi: [10.1111/j.1420-9101.2007.01325.x](https://doi.org/10.1111/j.1420-9101.2007.01325.x) PMID: [17584246](https://pubmed.ncbi.nlm.nih.gov/17584246/)
87. Frère CH, Krützen M, Kopps AM, Ward P, Mann J, Sherwin WB. Inbreeding tolerance and fitness costs in wild bottlenose dolphins. *Proc R Soc Lond B Biol Sci.* 2010; 277: 2667–2673. doi: [10.1098/rspb.2010.0039](https://doi.org/10.1098/rspb.2010.0039)
88. Olson LE, Blumstein DT, Pollinger JR, Wayne RK. No evidence of inbreeding avoidance despite demonstrated survival costs in a polygynous rodent. *Mol Ecol.* 2012; 21:562–571. doi: [10.1111/j.1365-294X.2011.05389.x](https://doi.org/10.1111/j.1365-294X.2011.05389.x) PMID: [22145620](https://pubmed.ncbi.nlm.nih.gov/22145620/)
89. Billing AM, Lee AM, Skjelseth S, Borg AA, Hale MC, Slate J, et al. Evidence of inbreeding depression but not inbreeding avoidance in a natural house sparrow population. *Mol Ecol.* 2012; 21:1487–1499. doi: [10.1111/j.1365-294X.2012.05490.x](https://doi.org/10.1111/j.1365-294X.2012.05490.x) PMID: [22335620](https://pubmed.ncbi.nlm.nih.gov/22335620/)
90. Randall DA, Pollinger JP, Wayne RK, Tallents LA, Johnson PJ, Macdonald DW. Inbreeding is reduced by female-biased dispersal and mating behavior in Ethiopian wolves. *Behav Ecol.* 2007; 18:579–589. doi: [10.1093/beheco/arm010](https://doi.org/10.1093/beheco/arm010)
91. Lize A, McKay R, Lewis Z. Kin recognition in *Drosophila*: the importance of ecology and gut microbiota. *Isme J.* 2014; 8:469–477. doi: [10.1038/ismej.2013.157](https://doi.org/10.1038/ismej.2013.157) PMID: [24030598](https://pubmed.ncbi.nlm.nih.gov/24030598/)
92. Ala-Honkola O, Manier MK, Lüpold S, Pitnick S. No evidence for postcopulatory inbreeding avoidance in *Drosophila melanogaster*. *Evolution.* 2011; 65:2699–2705. doi: [10.1111/j.1558-5646.2011.01317.x](https://doi.org/10.1111/j.1558-5646.2011.01317.x) PMID: [21884066](https://pubmed.ncbi.nlm.nih.gov/21884066/)
93. Loyau A, Cornuau JH, Clobert J, Danchin É. Incestuous sisters: mate preference for brothers over unrelated males in *Drosophila melanogaster*. *Plos One.* 2012; 7: e51293. doi: [10.1371/journal.pone.0051293](https://doi.org/10.1371/journal.pone.0051293) PMID: [23251487](https://pubmed.ncbi.nlm.nih.gov/23251487/)
94. Robinson SP, Kennington WJ, Simmons LW. Assortative mating for relatedness in a large naturally occurring population of *Drosophila melanogaster*. *J Evol Biol.* 2012; 25: 716–725. doi: [10.1111/j.1420-9101.2012.02466.x](https://doi.org/10.1111/j.1420-9101.2012.02466.x) PMID: [22321157](https://pubmed.ncbi.nlm.nih.gov/22321157/)
95. Tan CKW, Lovlie H, Pizzari T, Wigby S. No evidence for precopulatory inbreeding avoidance in *Drosophila melanogaster*. *Anim Behav.* 2012; 83:1433–1441. doi: [10.1016/j.anbehav.2012.03.015](https://doi.org/10.1016/j.anbehav.2012.03.015)
96. Reeve HK. The evolution of conspecific acceptance thresholds. *Am Nat.* 1989; 133: 407–435.
97. Schausberger P. Kin recognition by juvenile predatory mites: prior association or phenotype matching? *Behav Ecol Sociobiol.* 2007; 62:119–125. doi: [10.1007/s00265-007-0444-9](https://doi.org/10.1007/s00265-007-0444-9)
98. Starks PT, Fisher DJ, Watson RE, Melikian GL, Nath SD. Context-dependent nestmate discrimination in the paper wasp, *Polistes dominulus*: a critical test of the optimal acceptance threshold model. *Anim Behav.* 1998; 56:449–458. doi: [10.1006/anbe.1998.0778](https://doi.org/10.1006/anbe.1998.0778) PMID: [9787036](https://pubmed.ncbi.nlm.nih.gov/9787036/)
99. Buczkowski G, Silverman J. Context-dependent nestmate discrimination and the effect of action thresholds on exogenous cue recognition in the Argentine ant. *Anim Behav.* 2005; 69:741–749. doi: [10.1016/j.anbehav.2004.06.027](https://doi.org/10.1016/j.anbehav.2004.06.027)
100. Wong JWY, Meunier J, Lucas C, Kölliker M. Paternal signature in kin recognition cues of a social insect: concealed in juveniles, revealed in adults. *Proc R Soc B.* 2014; 281: 20141236. doi: [10.1098/rspb.2014.1236](https://doi.org/10.1098/rspb.2014.1236) PMID: [25165768](https://pubmed.ncbi.nlm.nih.gov/25165768/)
101. Seelinger G, Seelinger U. On the social organisation, alarm and fighting in the primitive cockroach *Cryptocercus punctulatus* Scudder. *Z Für Tierpsychol.* 1983; 61: 315–333. doi: [10.1111/j.1439-0310.1983.tb01347.x](https://doi.org/10.1111/j.1439-0310.1983.tb01347.x)
102. Dronnet S, Lohou C, Christides J-P, Bagnères A-G. Cuticular hydrocarbon composition reflects genetic relationship among colonies of the introduced termite *Reticulitermes santonensis* Feytaud. *J Chem Ecol.* 2006; 32:1027–1042. doi: [10.1007/s10886-006-9043-x](https://doi.org/10.1007/s10886-006-9043-x) PMID: [16739021](https://pubmed.ncbi.nlm.nih.gov/16739021/)