

Supporting Information  
for DOI: 10.1055/s-0035-1560449  
© Georg Thieme Verlag KG Stuttgart · New York 2016

# **Pd-catalysed desulfitative Heck reaction tolerant to aryl C-Halo bonds for access to (poly)halo-substituted stilbene or cinnamate derivatives**

**Aymen Skhiri<sup>a,b</sup>**

**Ridha Ben Salem<sup>\*b</sup>**

**Jean-Francois Soulé<sup>a</sup>**

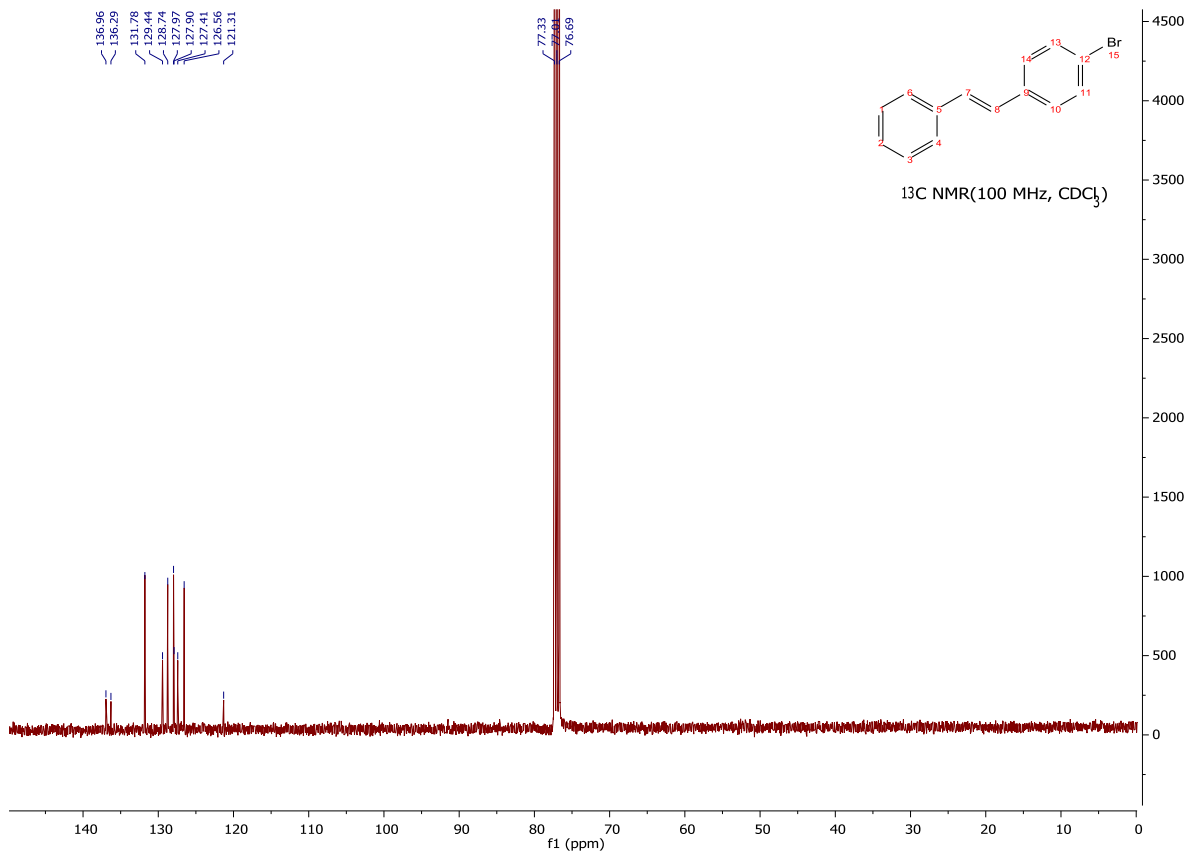
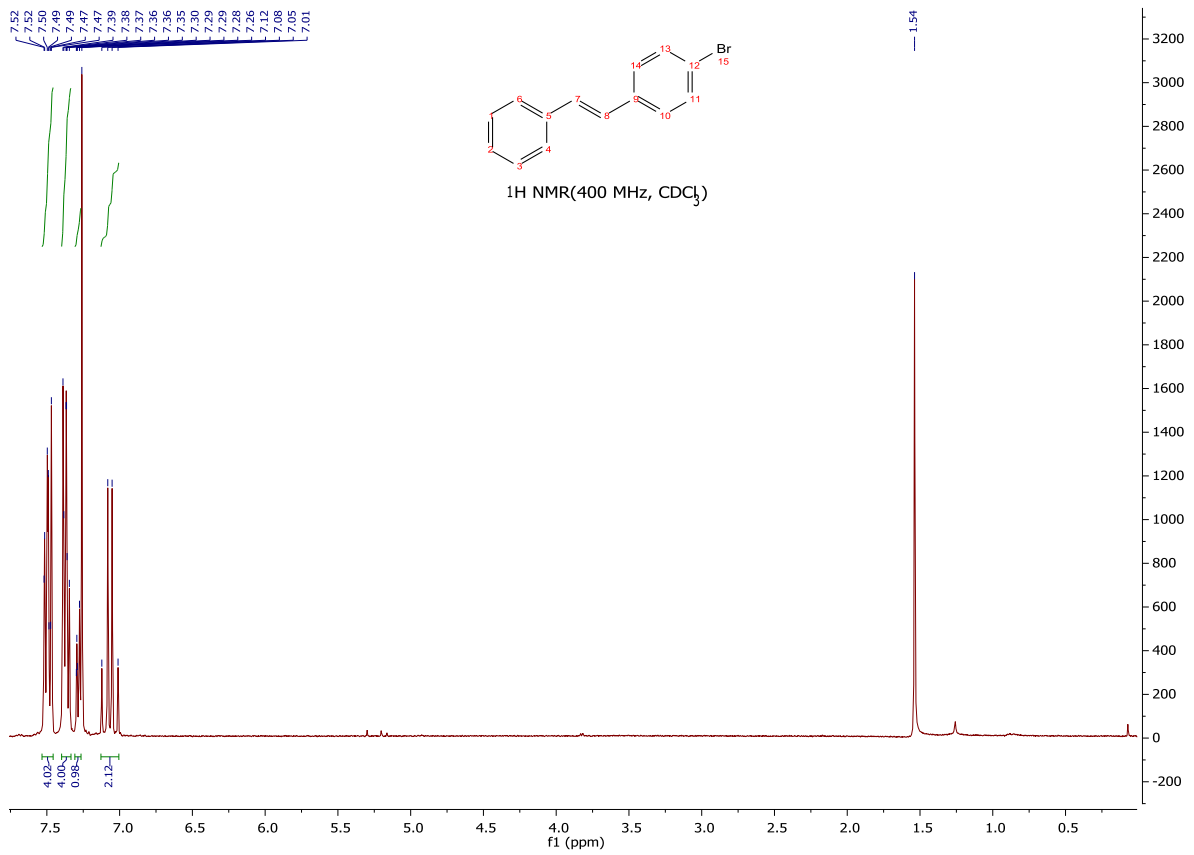
**Henri Doucet<sup>\*a</sup>**

<sup>a</sup> Institut Sciences Chimiques de Rennes, UMR 6226 CNRS-Université "Organométalliques: Matériaux et Catalyse", Campus de Beaulieu, 35042 Renr  
Fax: +33-(0)2-23-23-69-39; Tel: +33-(0)2-23-23-63-84.

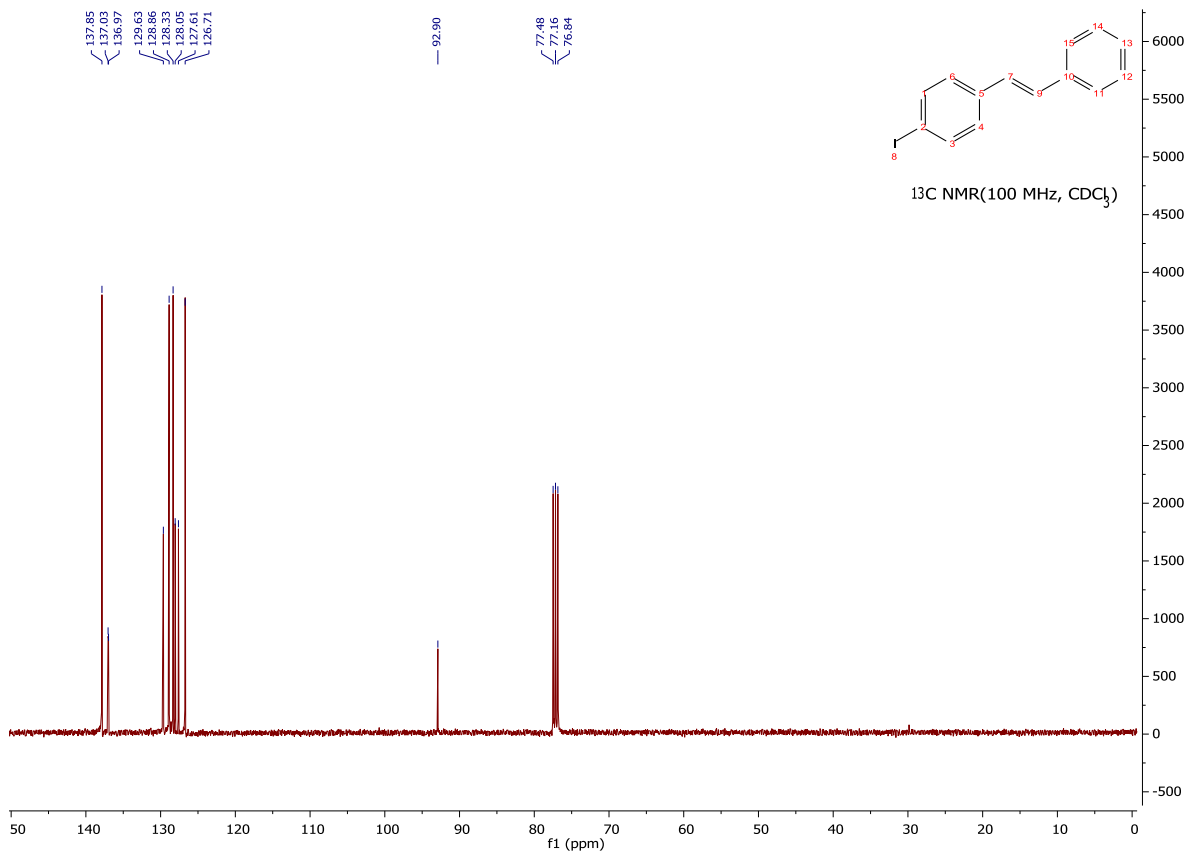
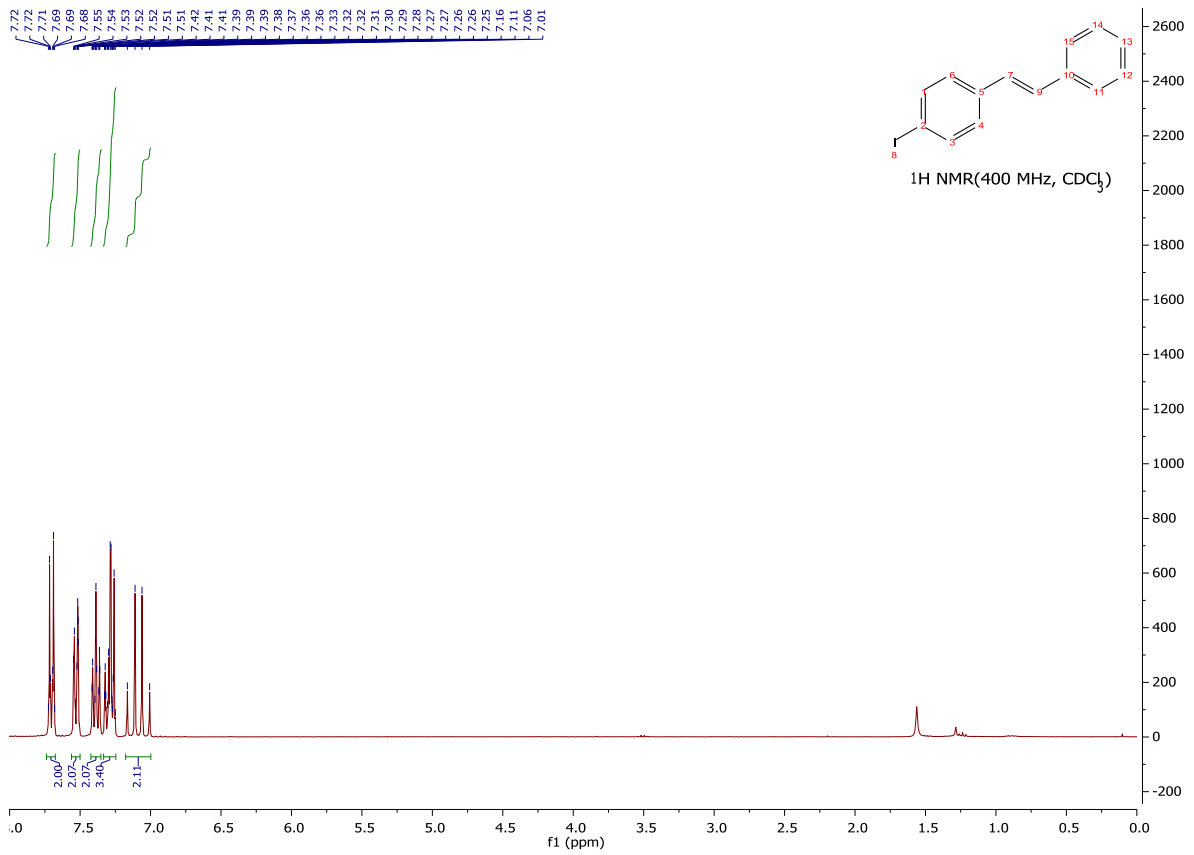
<sup>b</sup> Laboratoire de Chimie Organique Physique (UR 11ES74) Université de Sfax, Sciences de Sfax, Route de la Soukra km 4, 3038 Sfax, Tunisie.

ridhabensalem@yahoo.fr; henri.doucet@univ-rennes1.fr

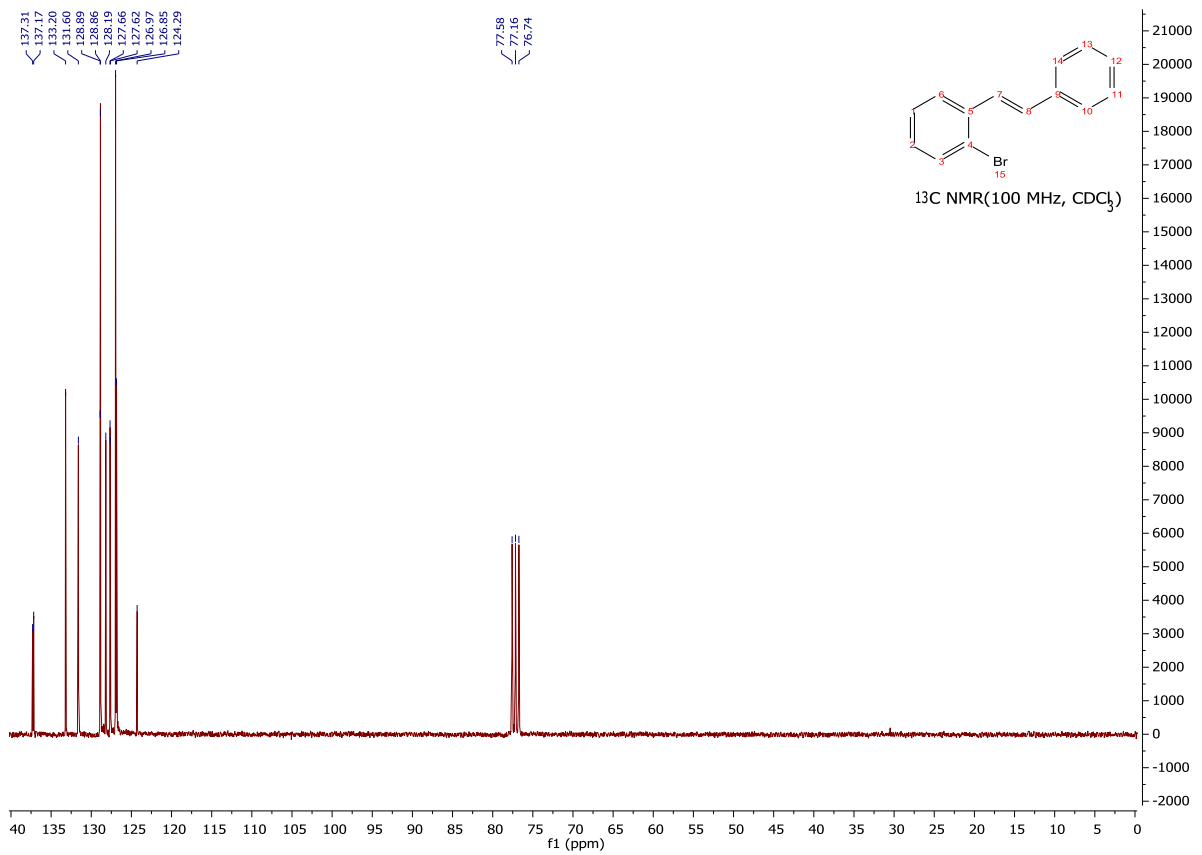
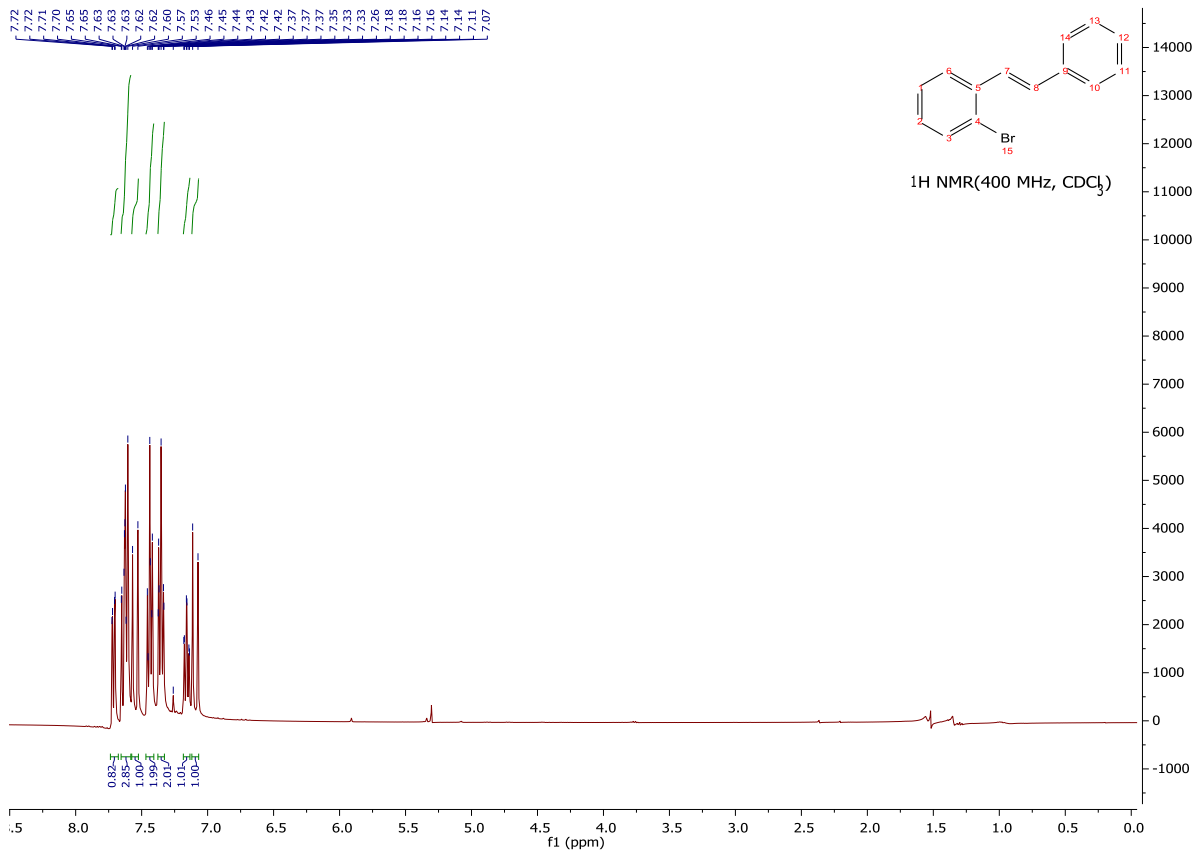
(1)



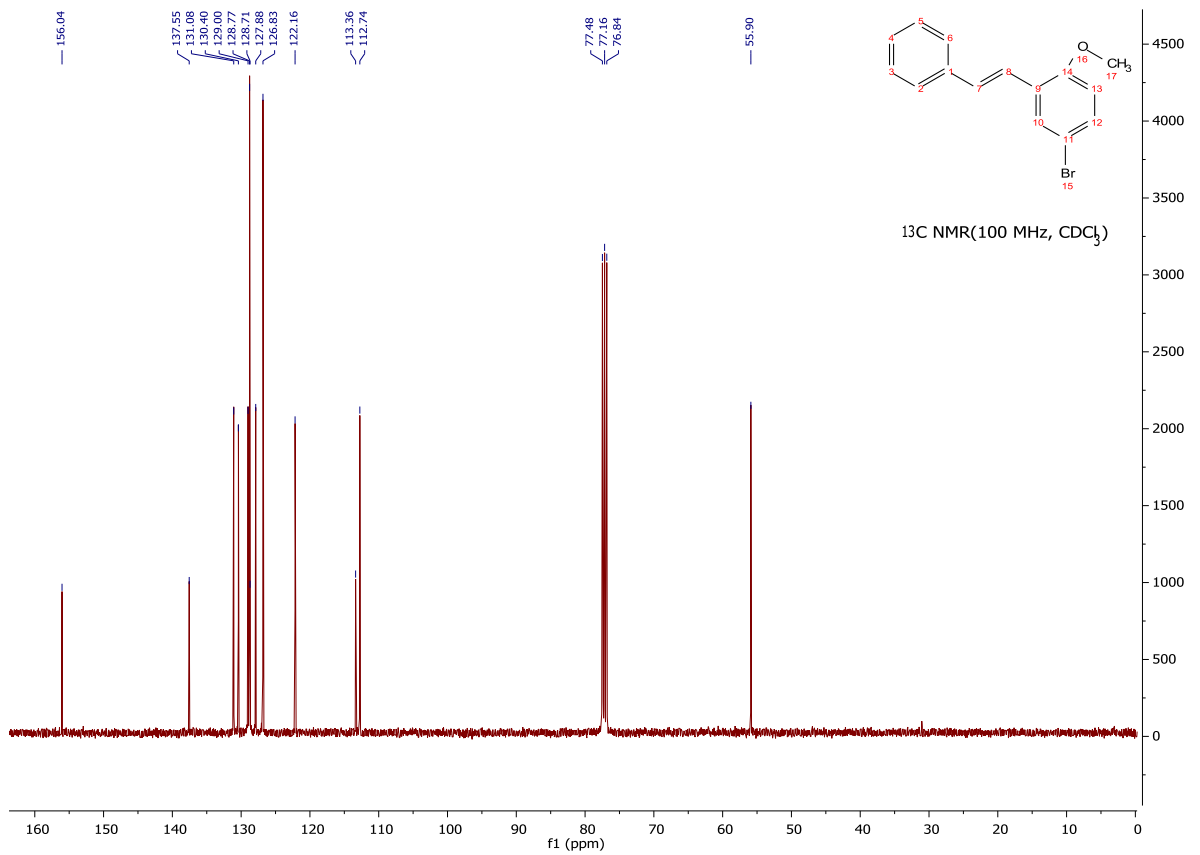
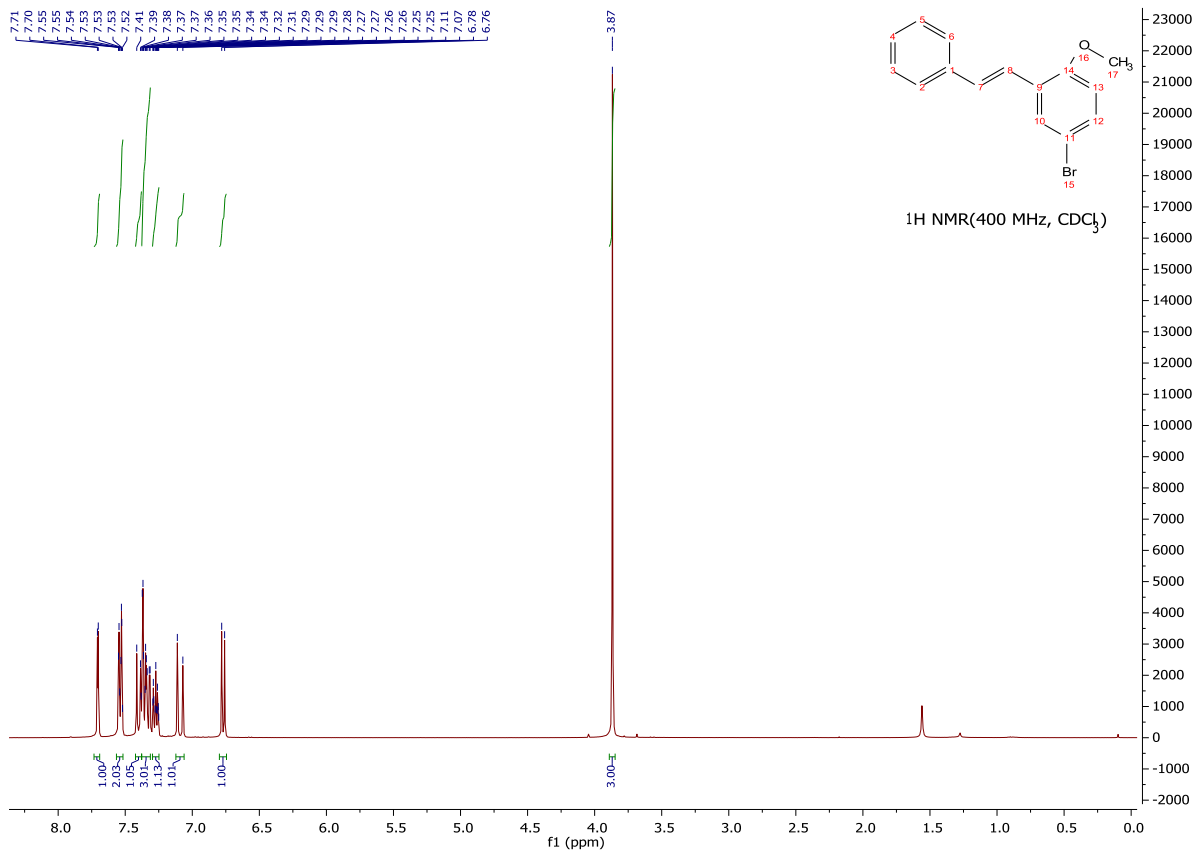
(2)



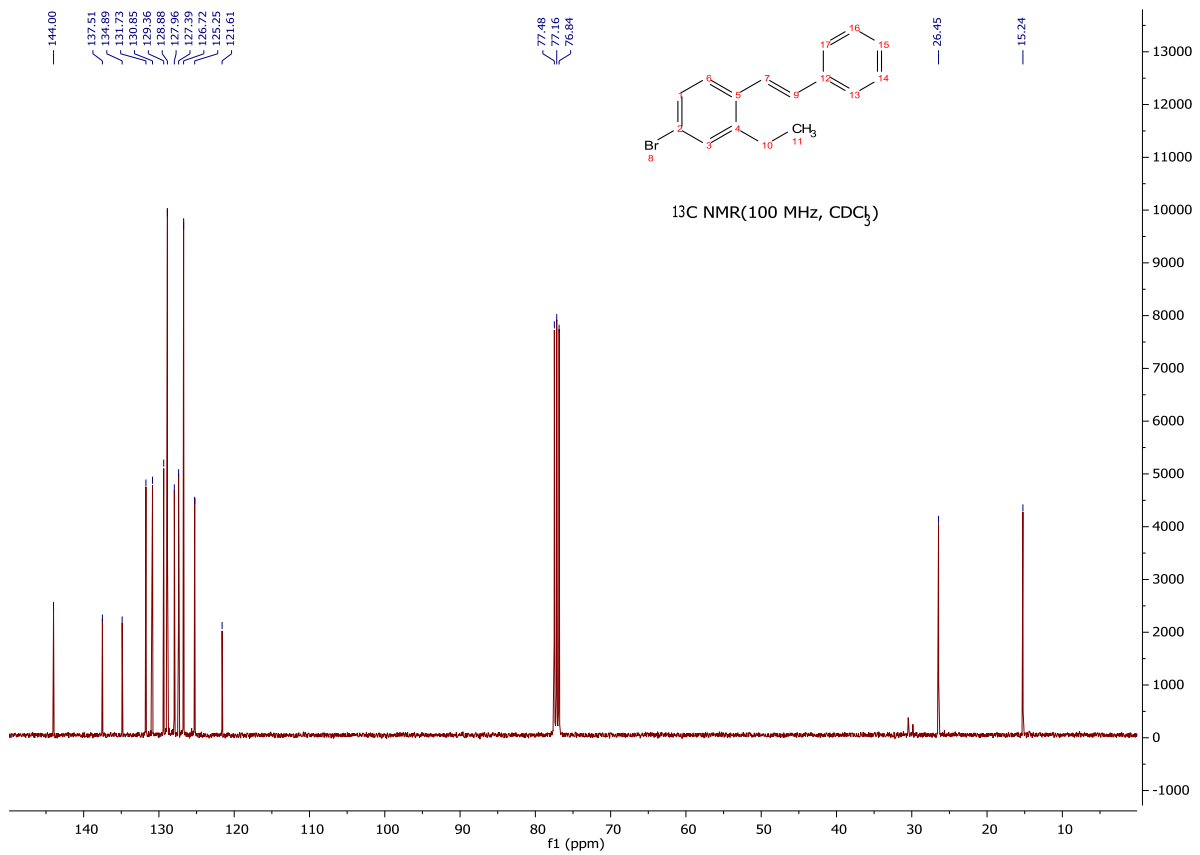
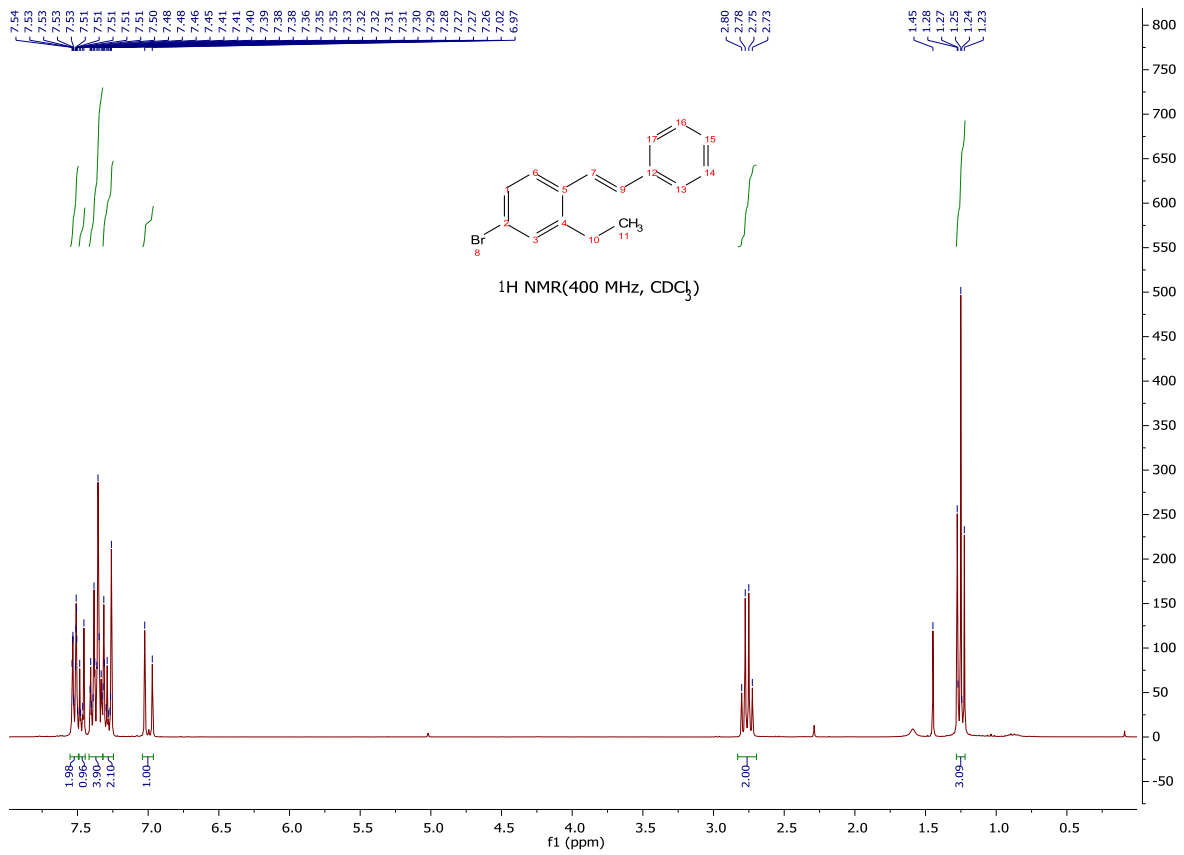
(3)



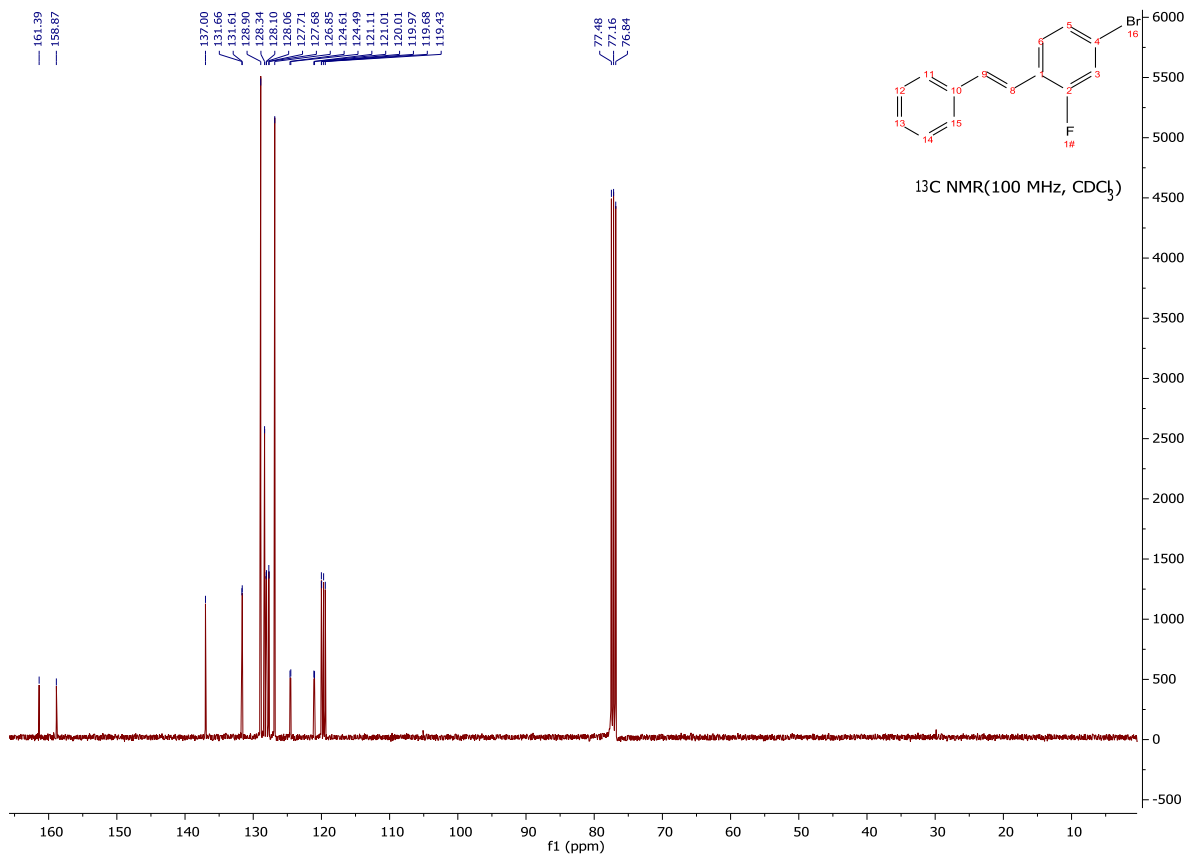
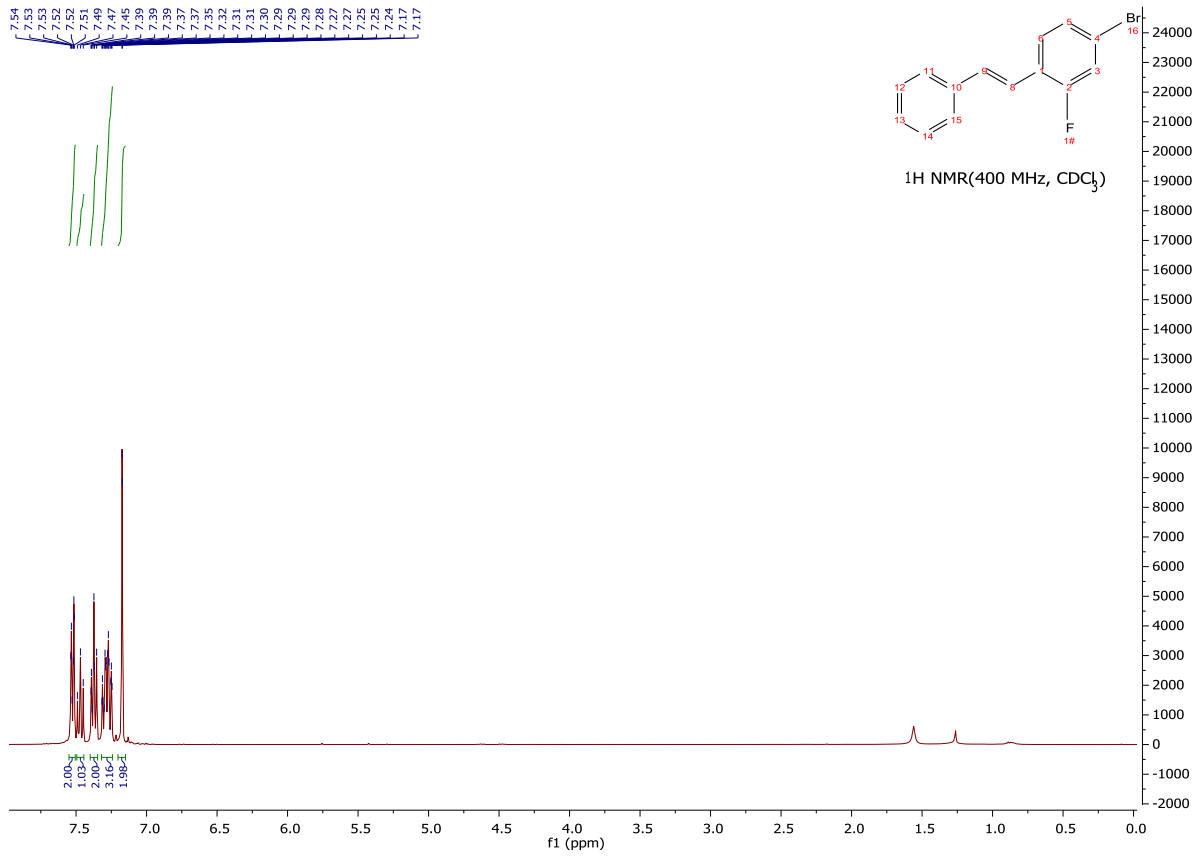
(4)



(5)

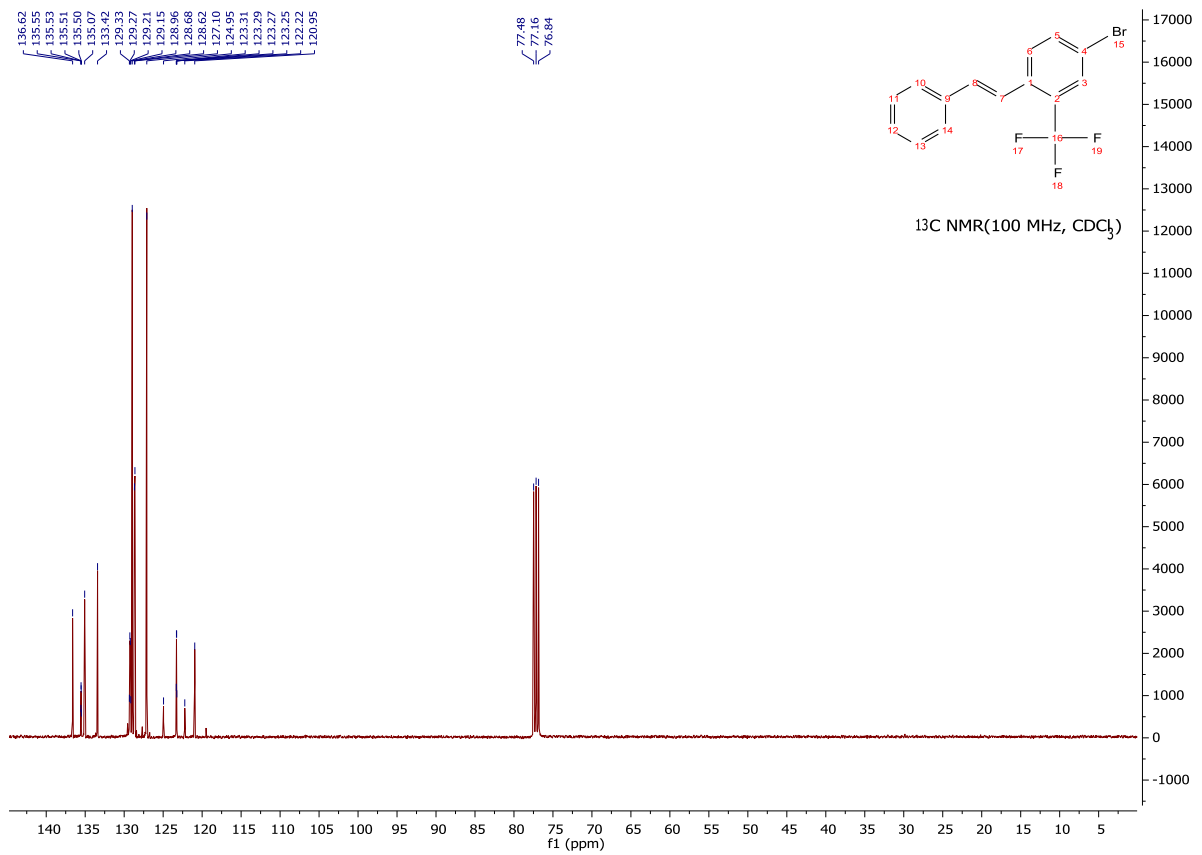
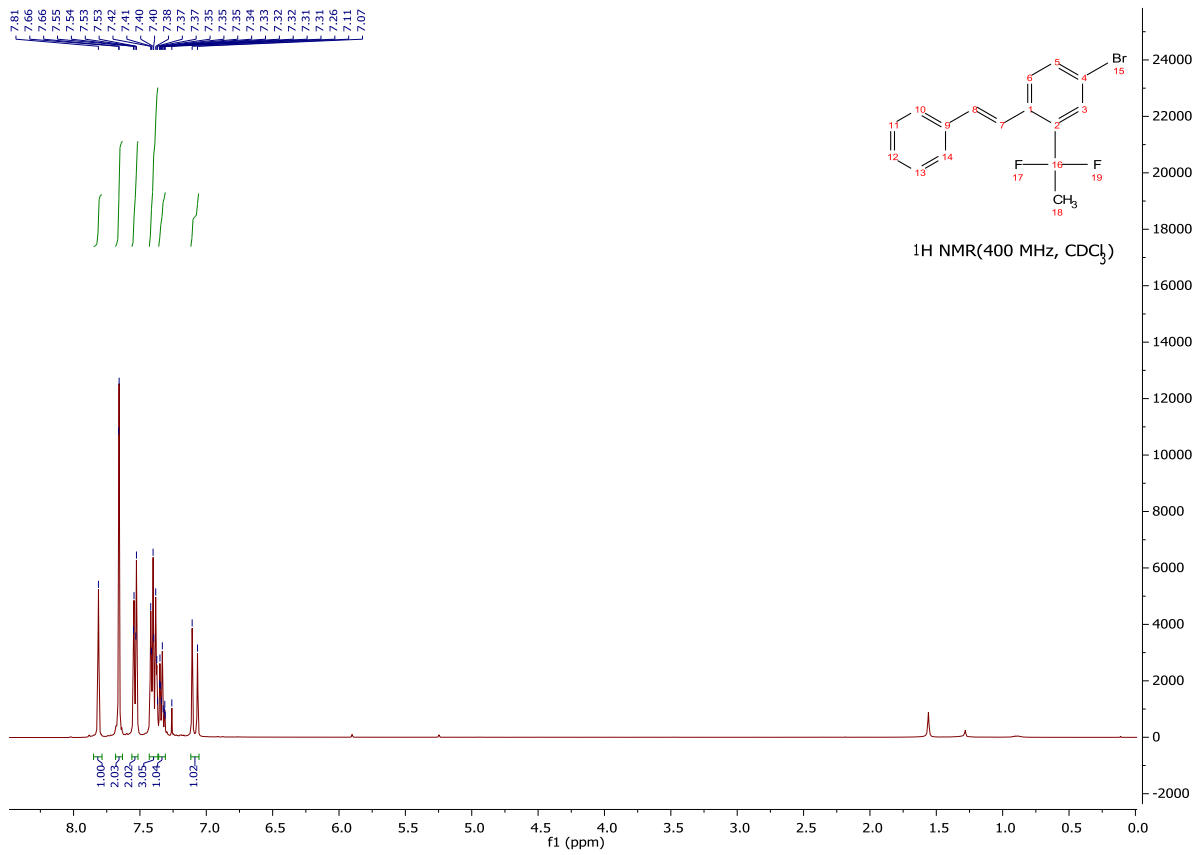


(6)

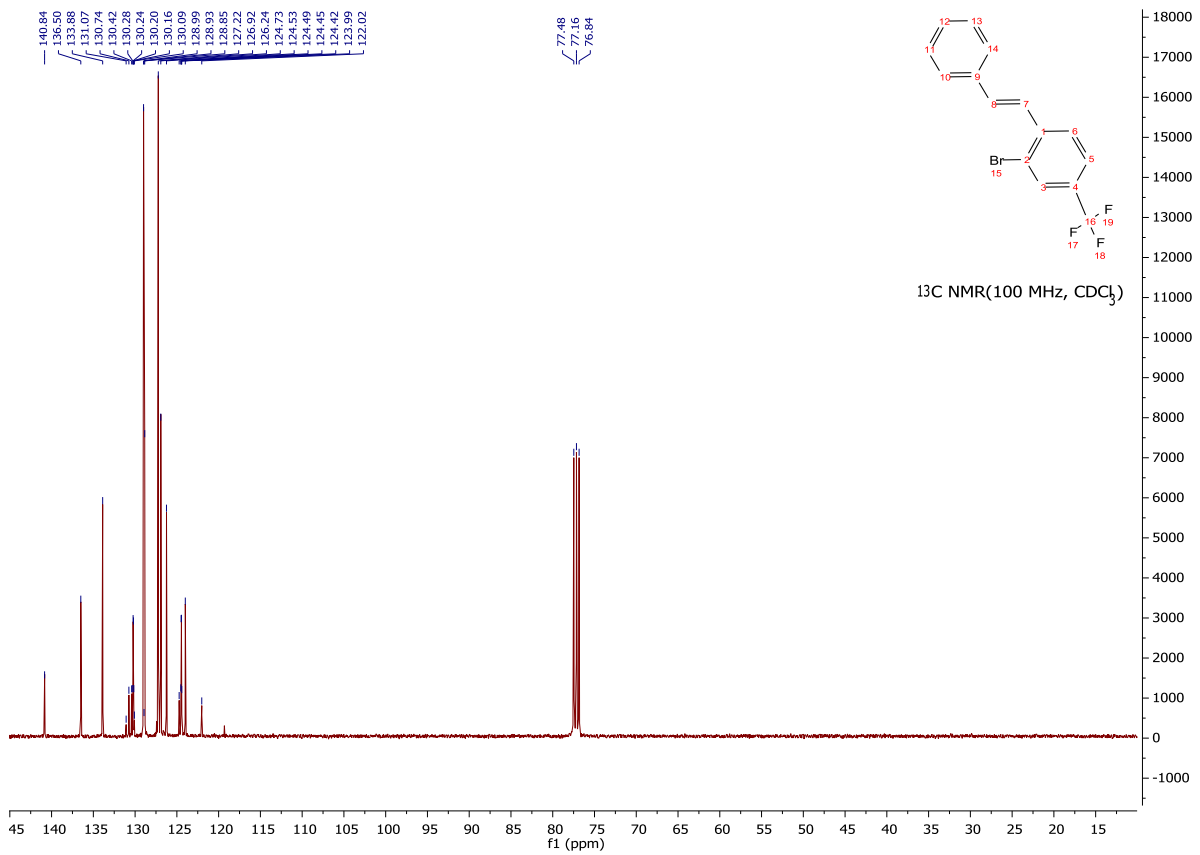
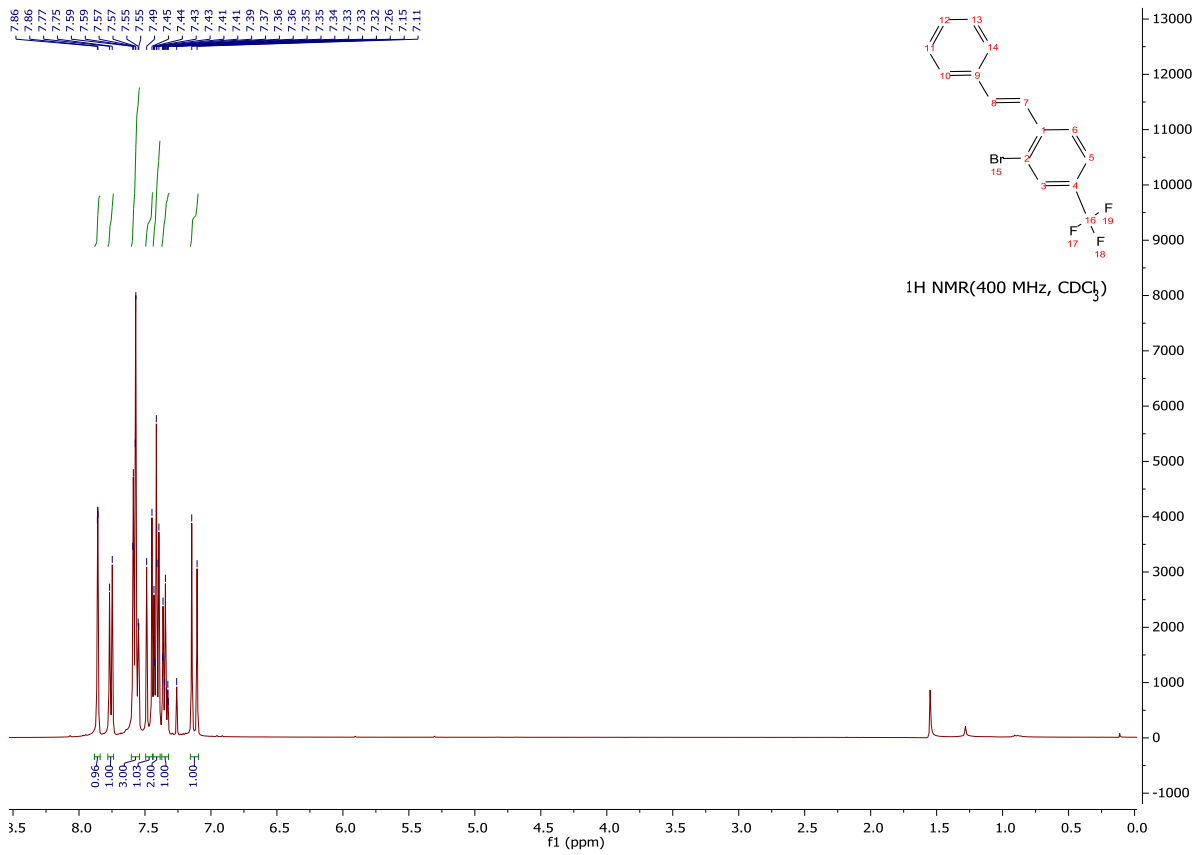




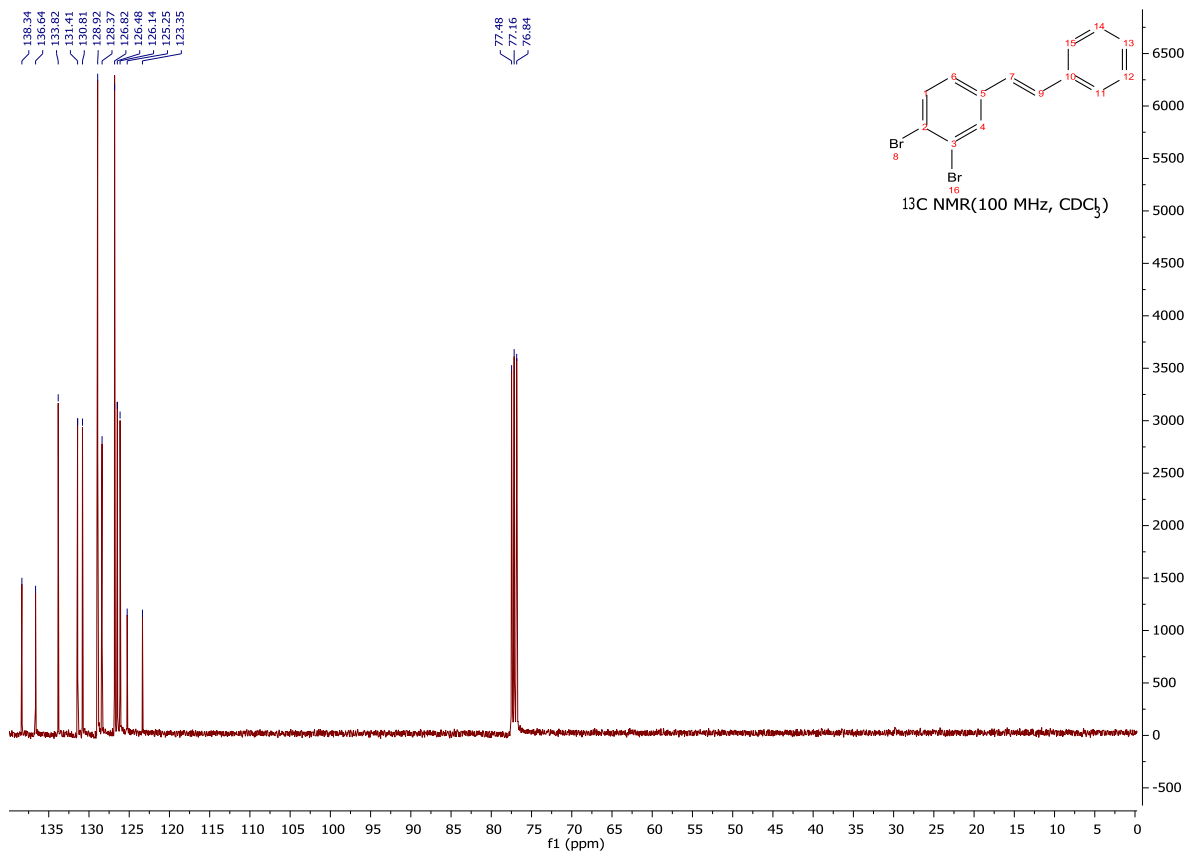
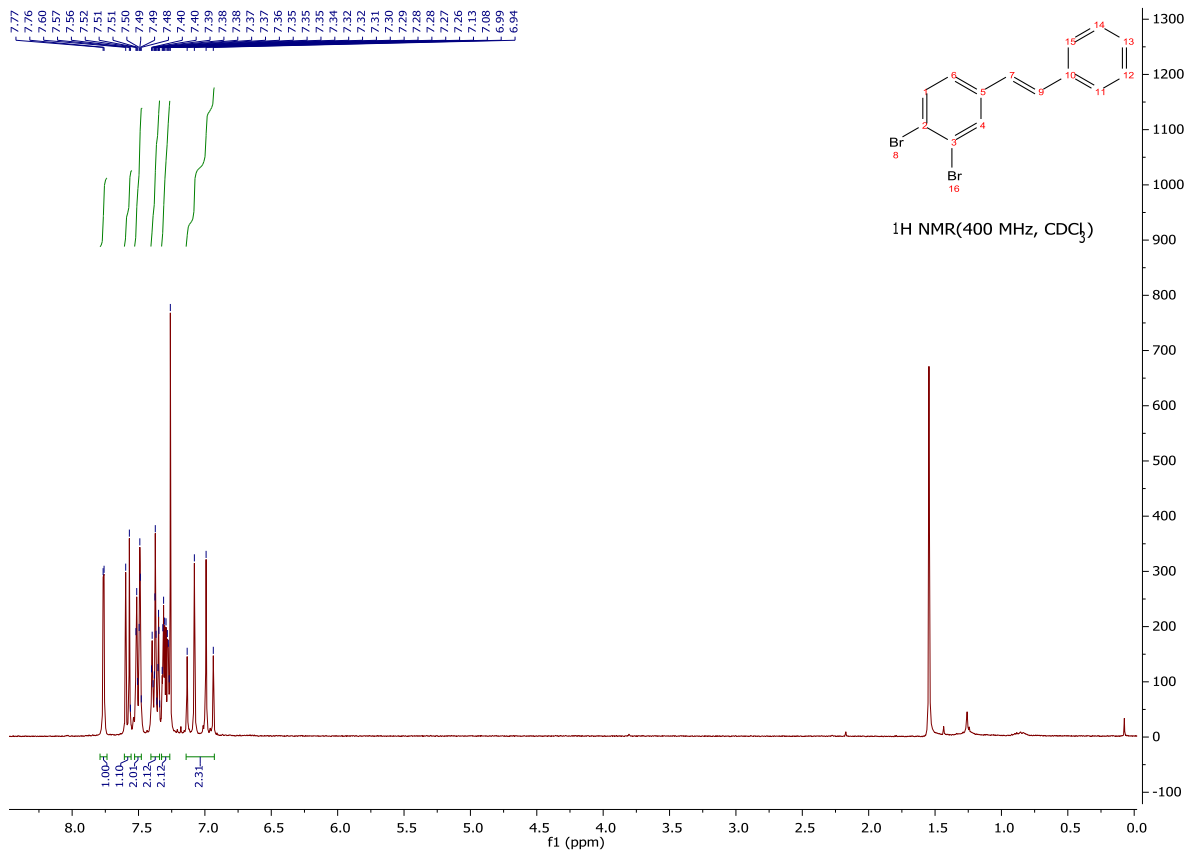
(7)



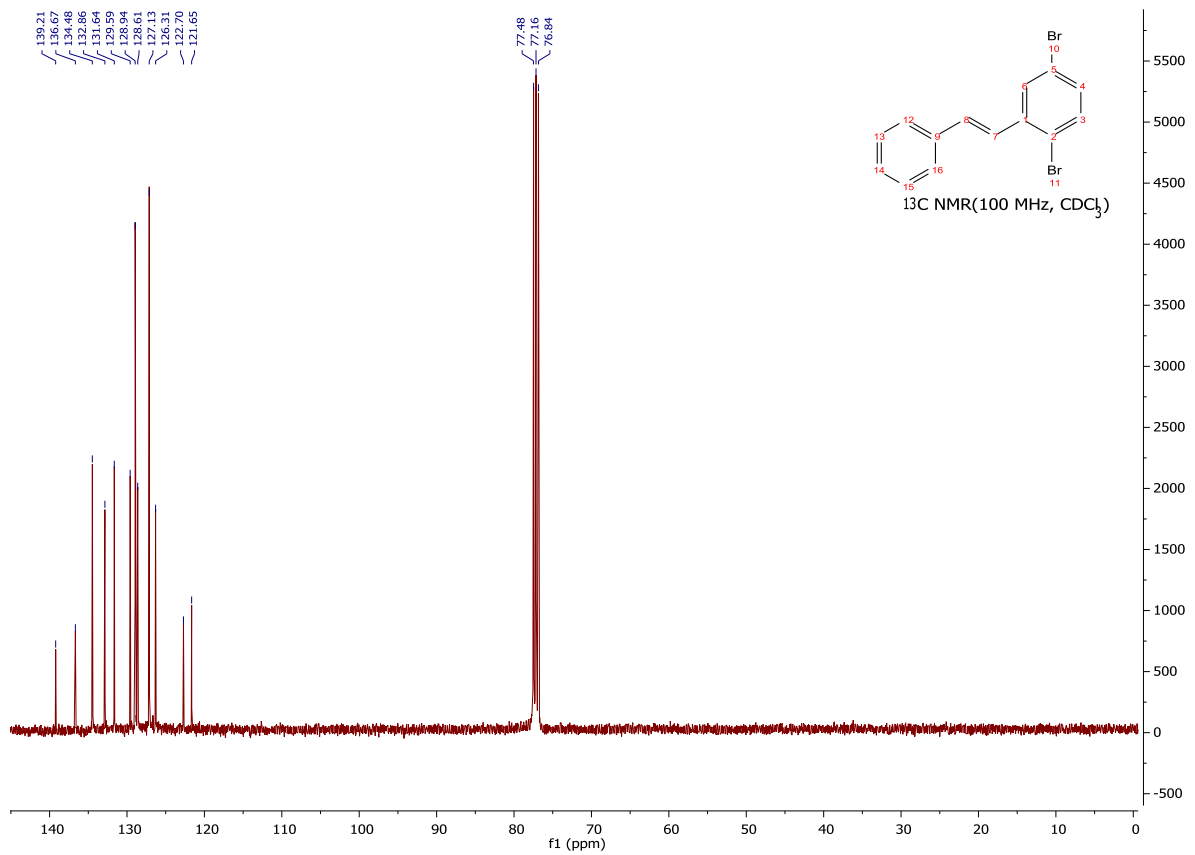
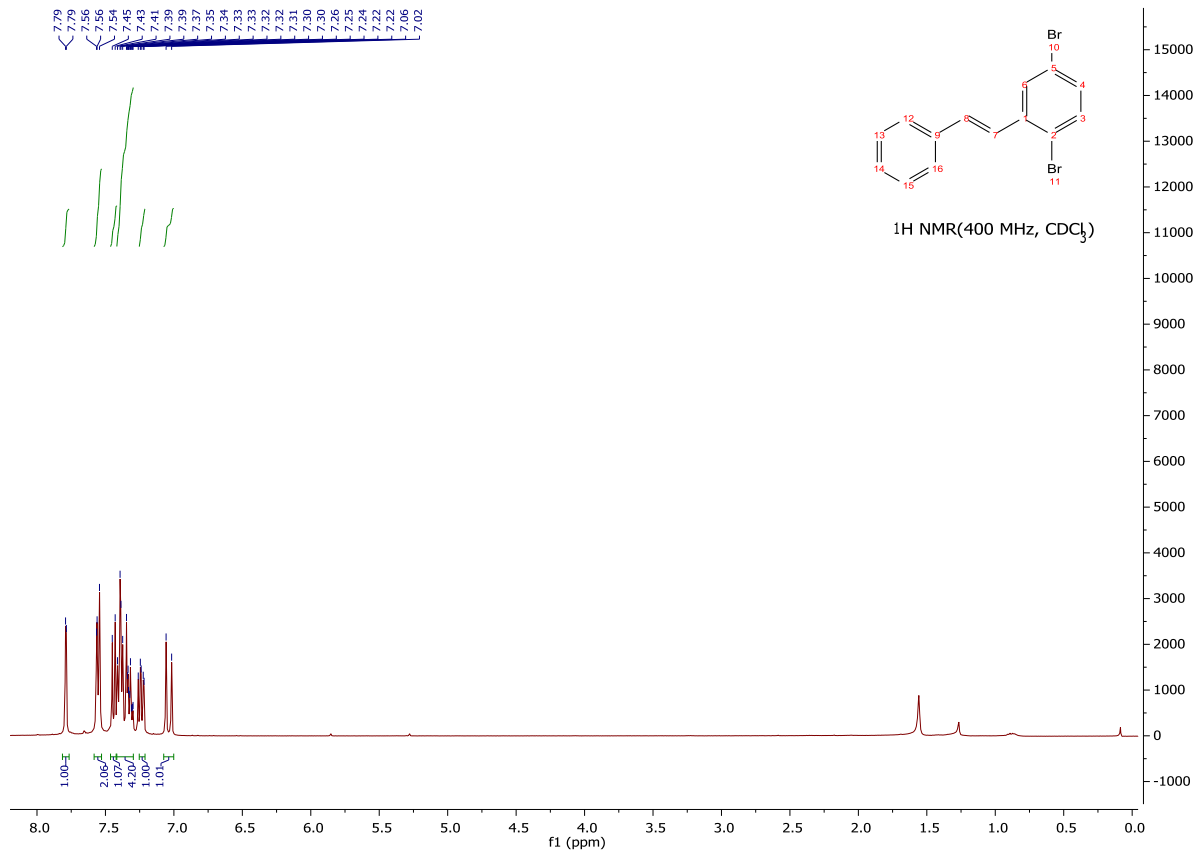
(8)



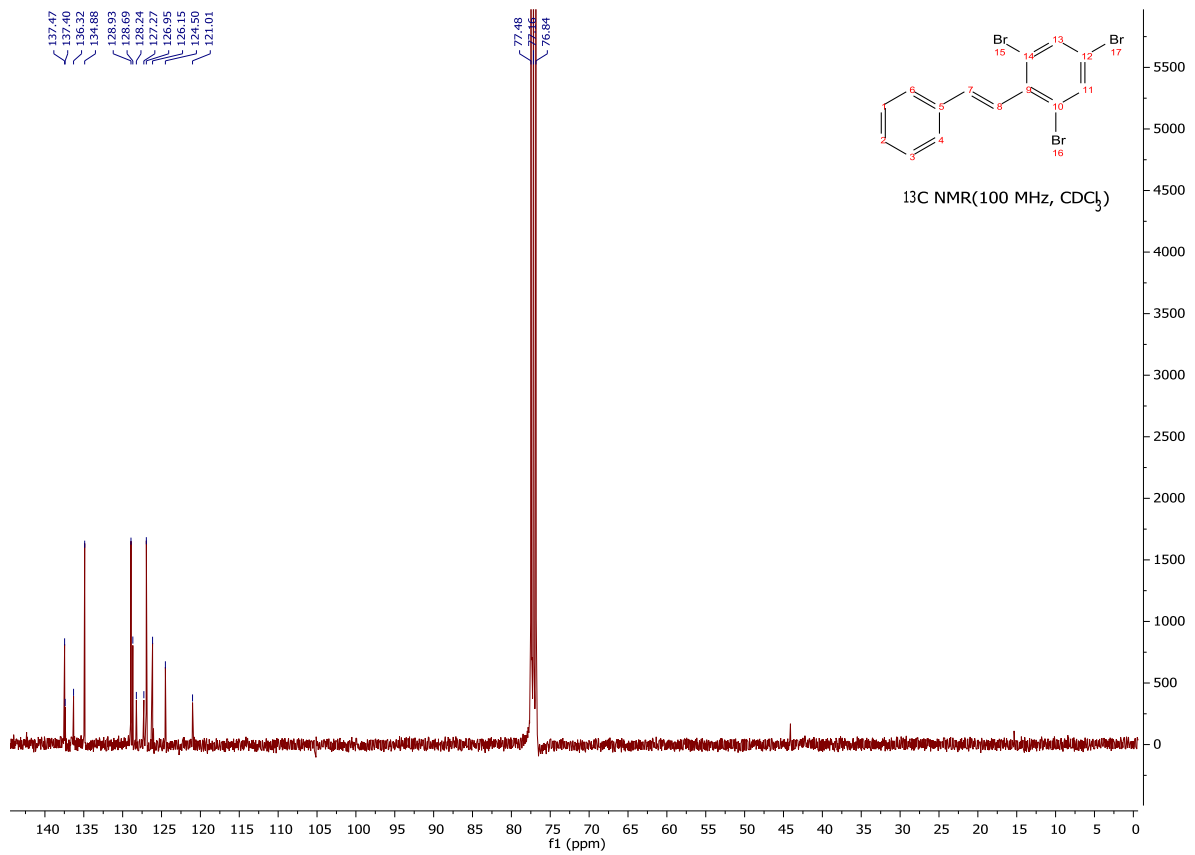
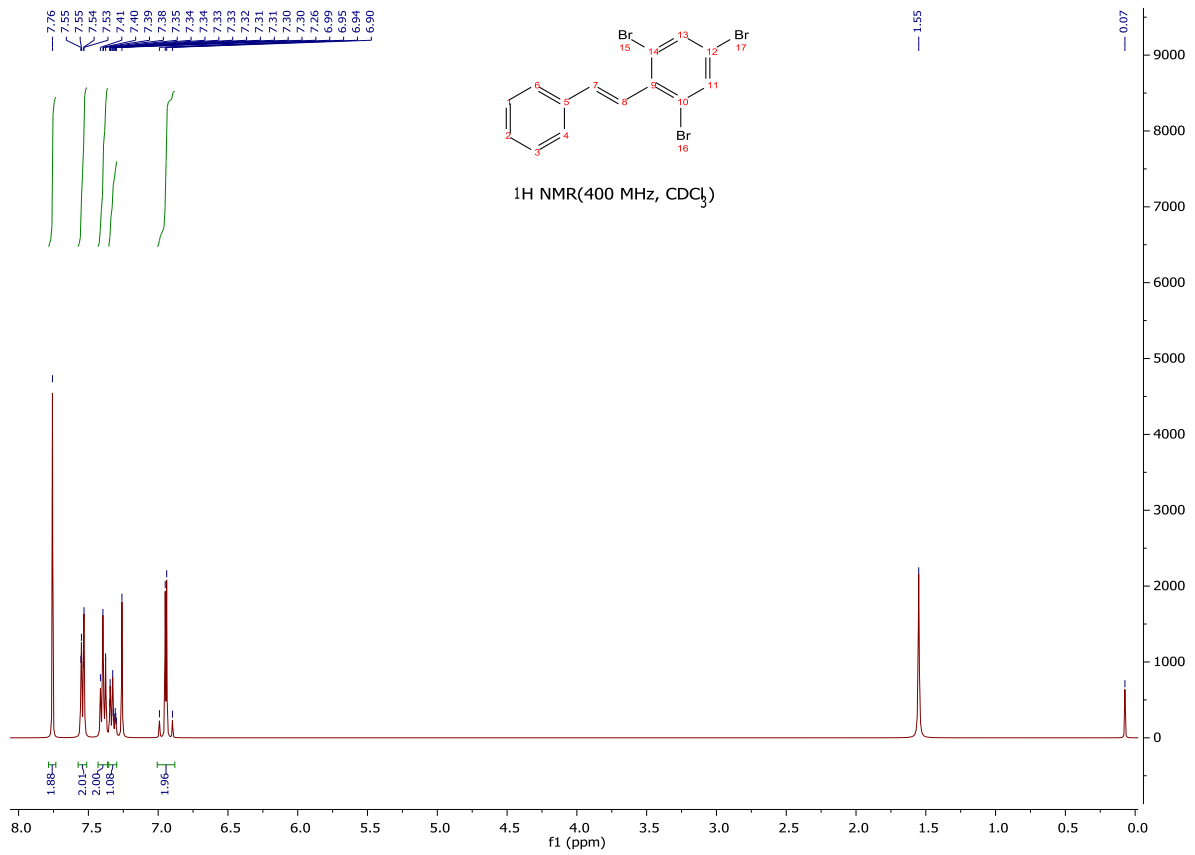
(9)



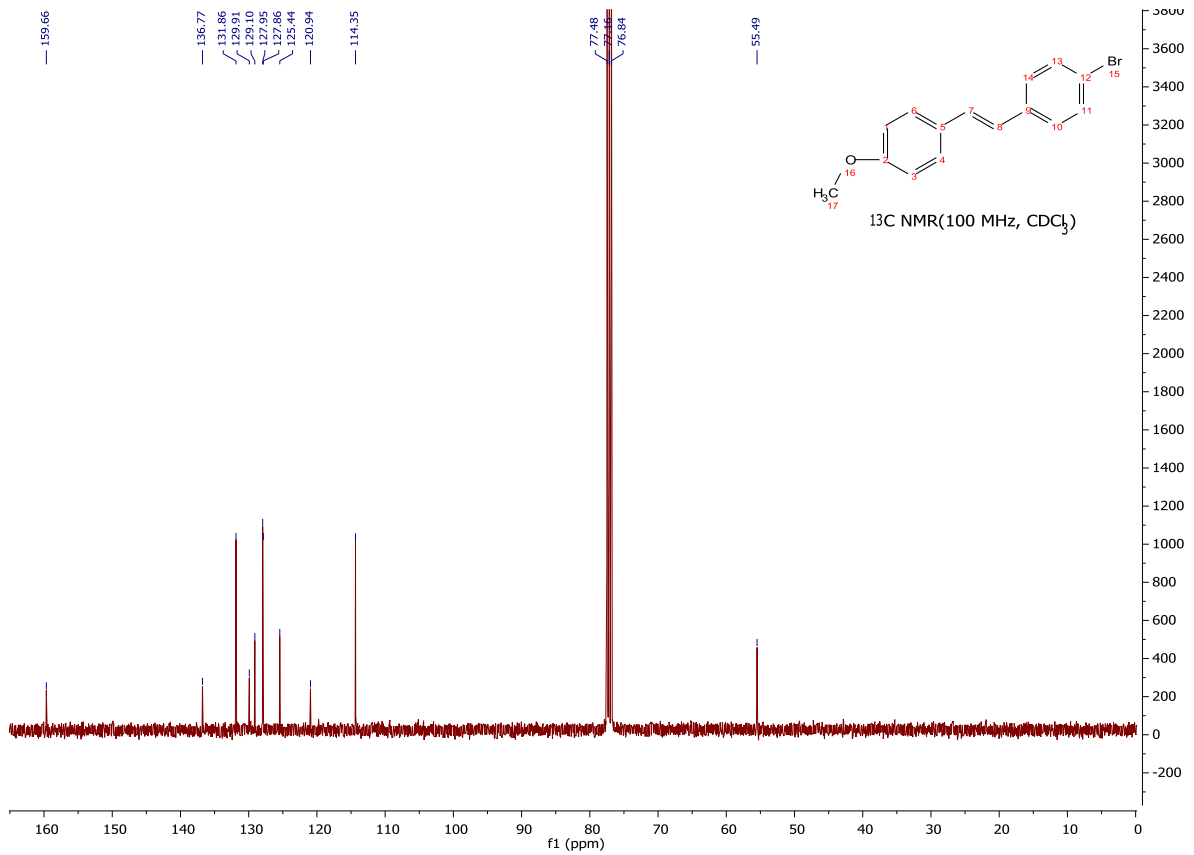
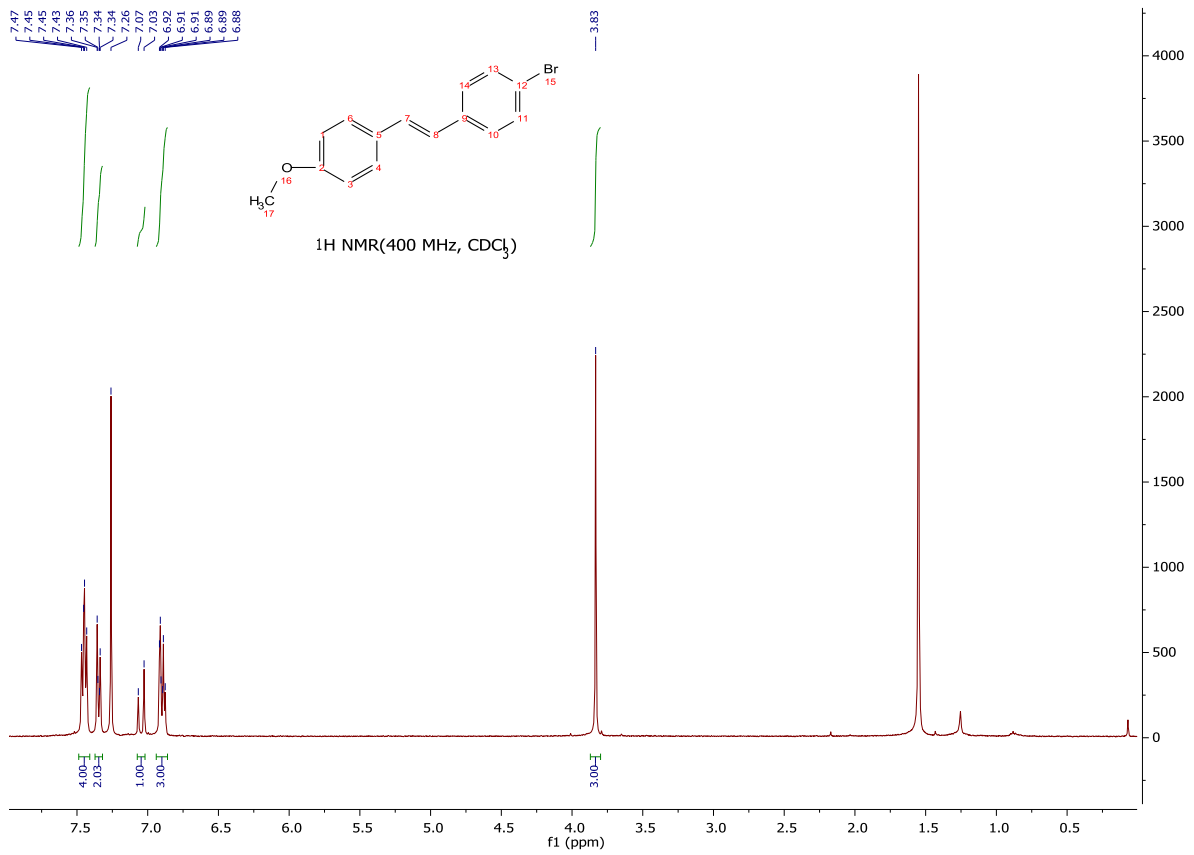
(10)



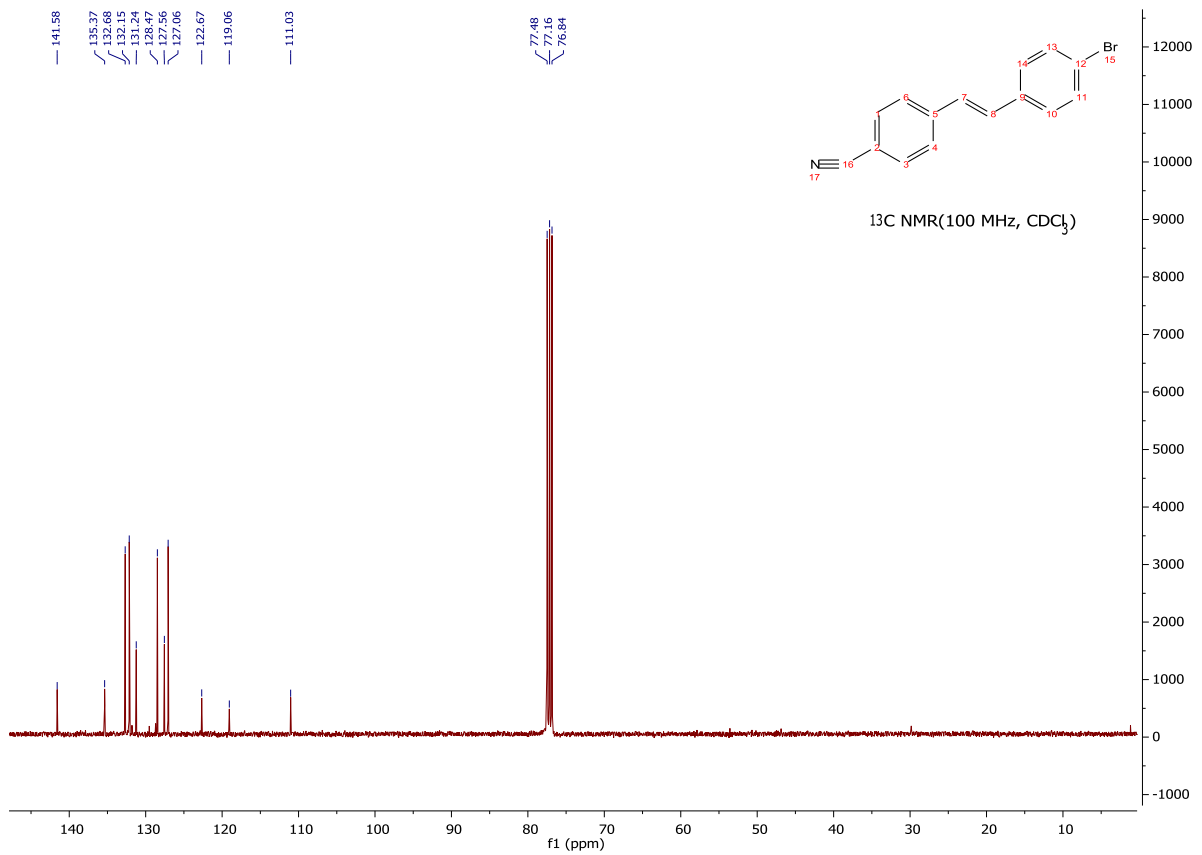
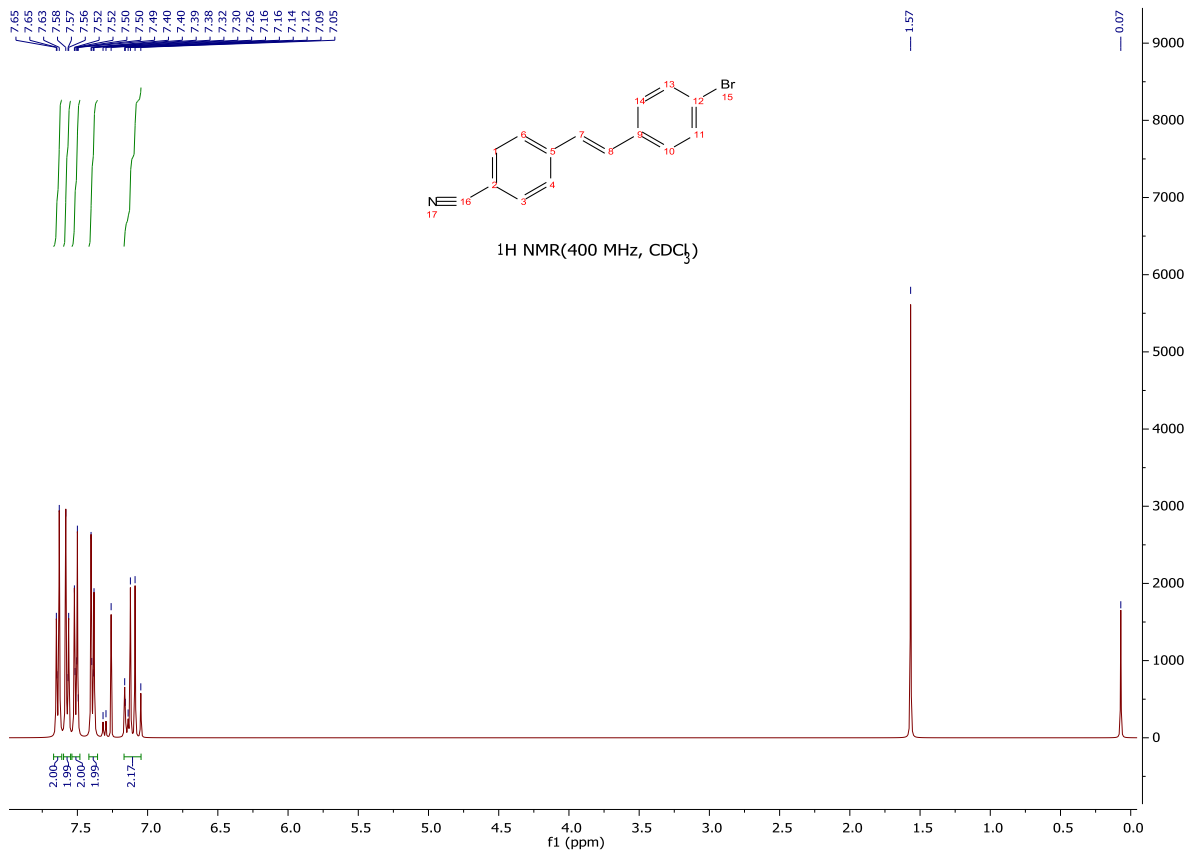
(11)



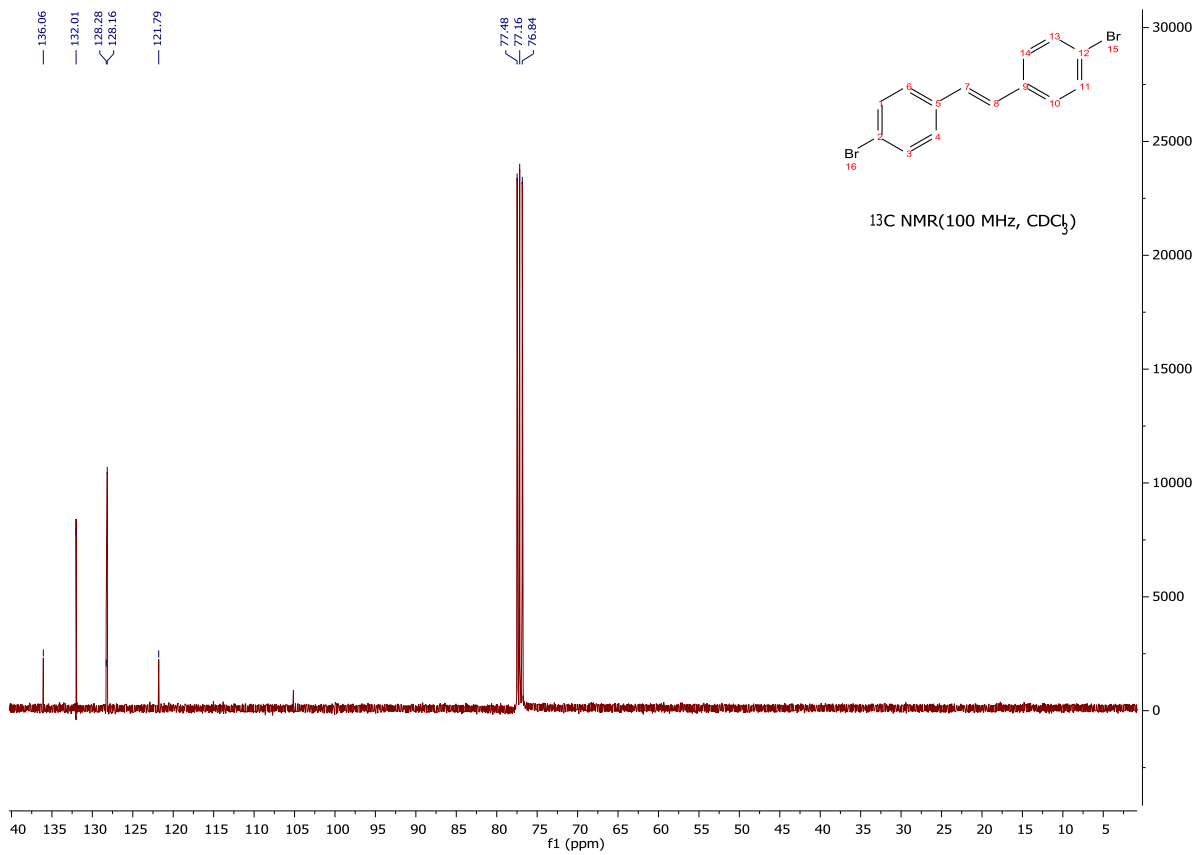
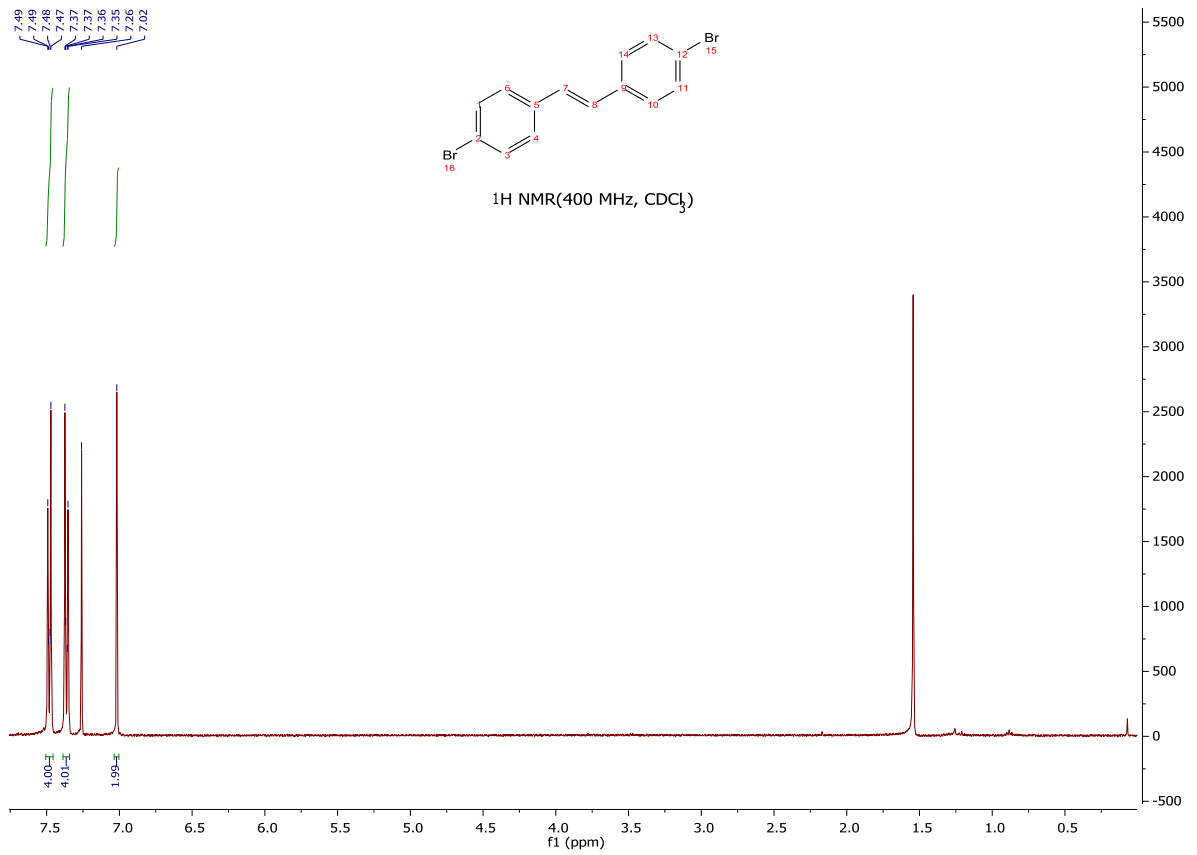
(12)



(13)

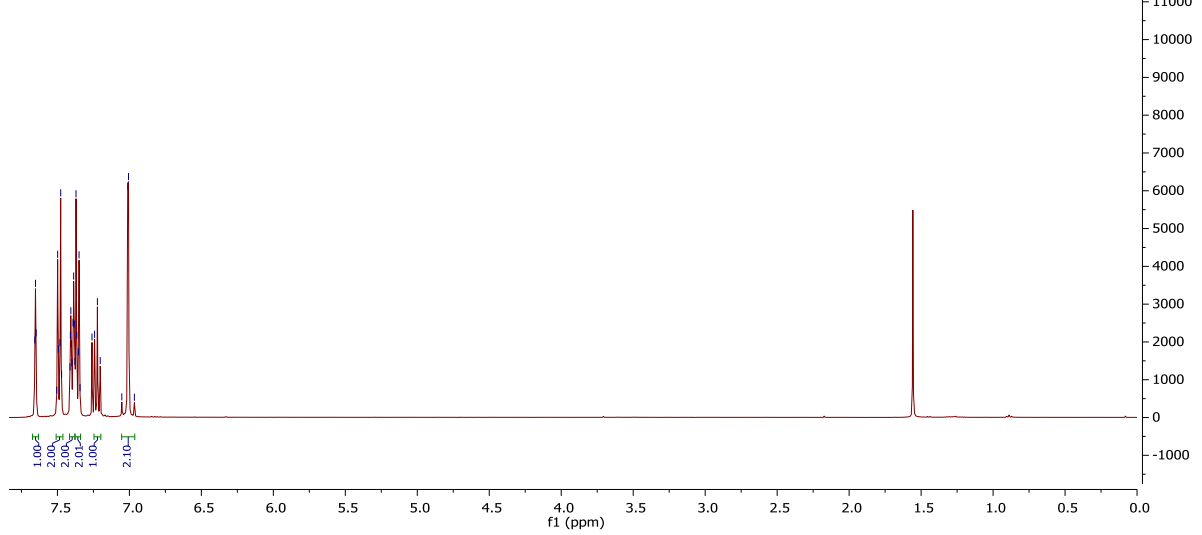
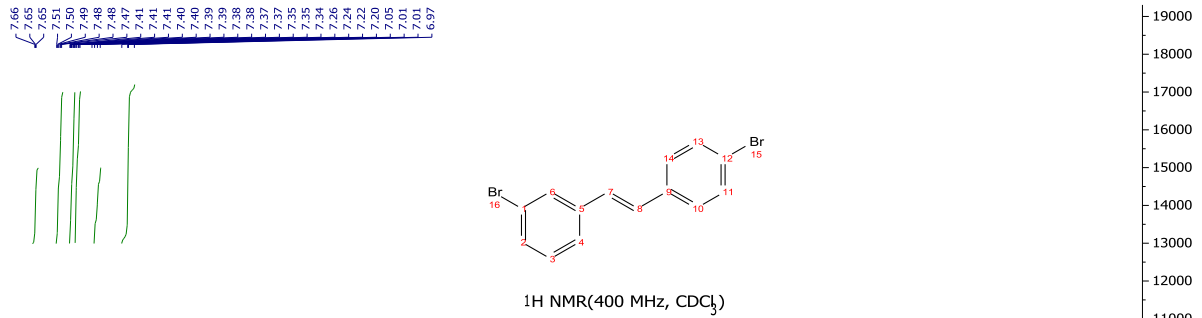


(14)

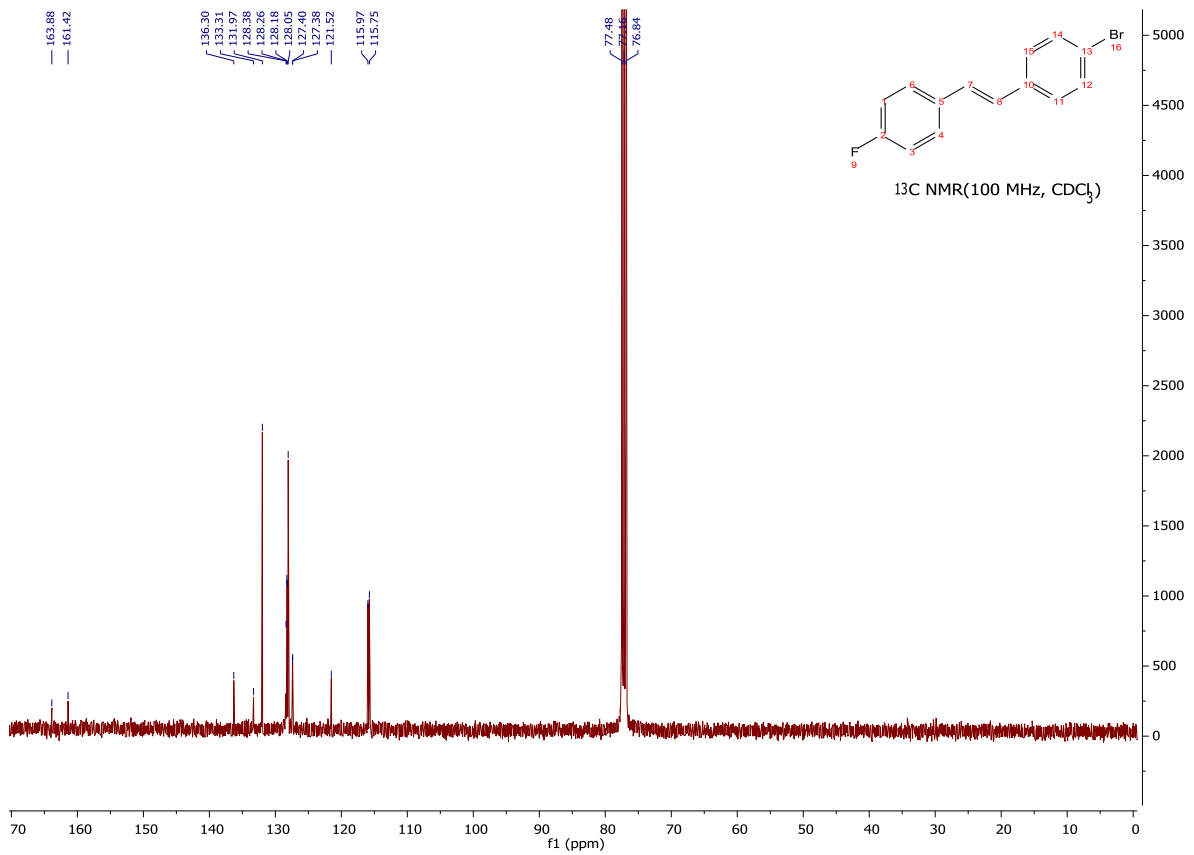
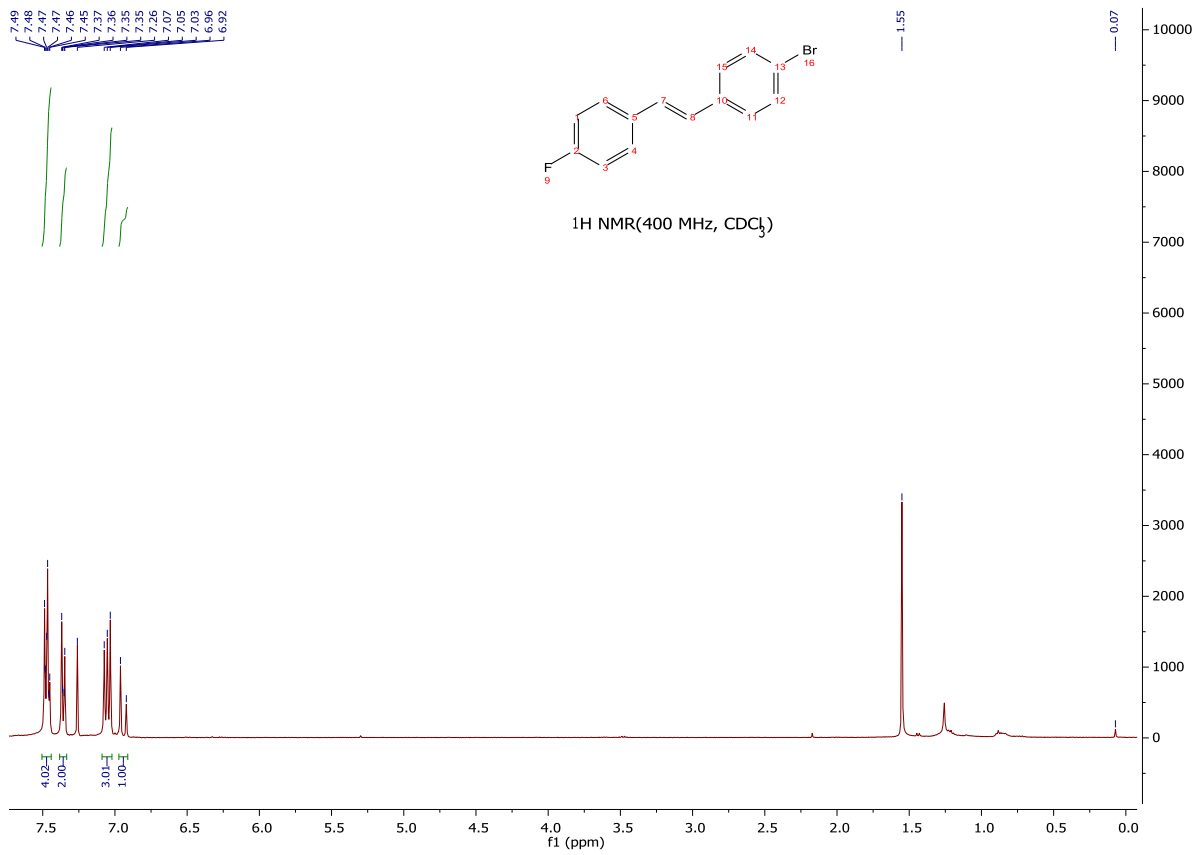




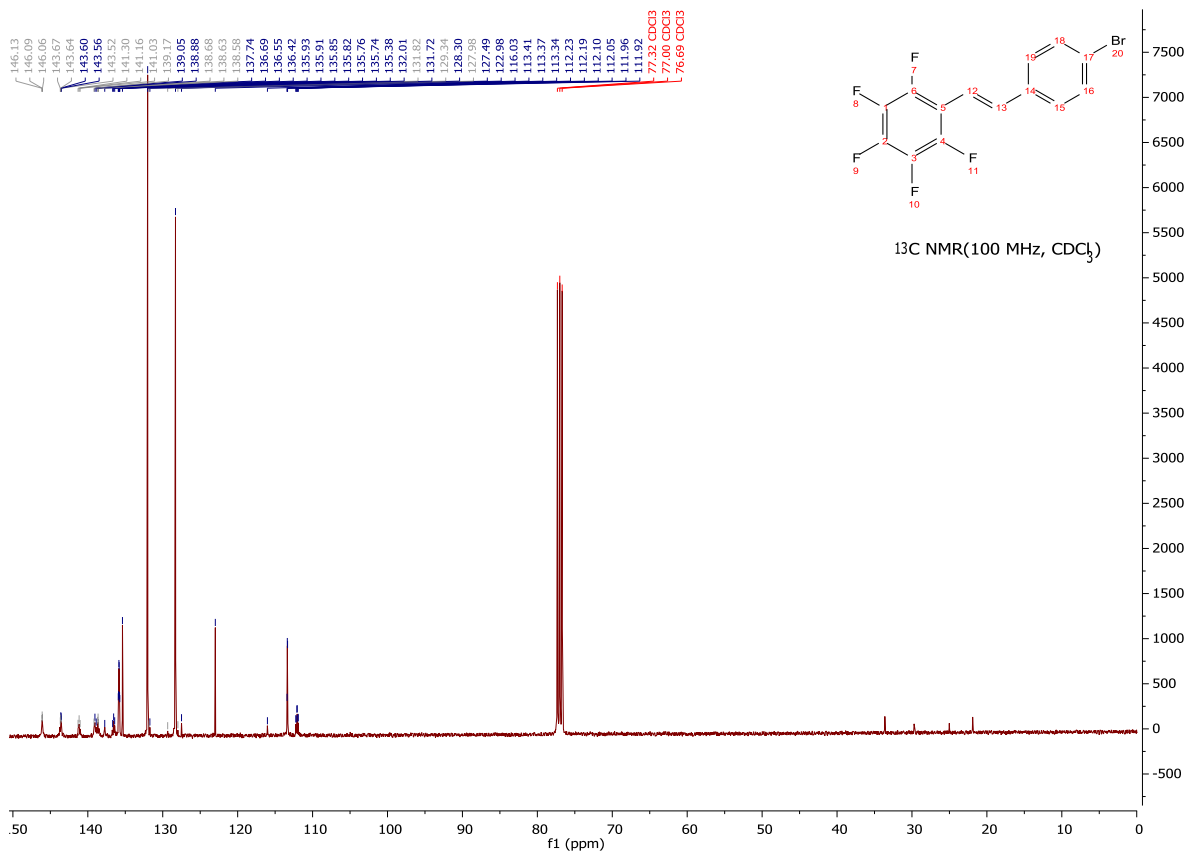
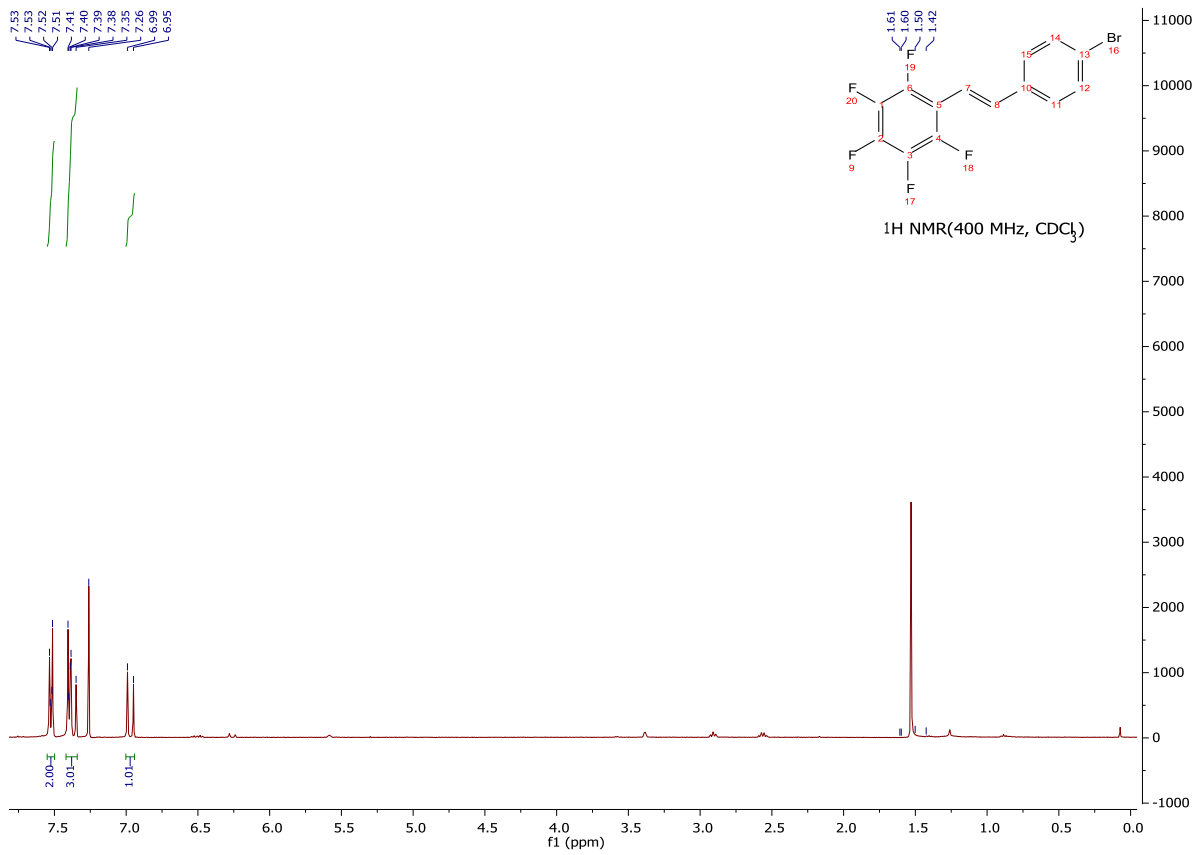
(15)



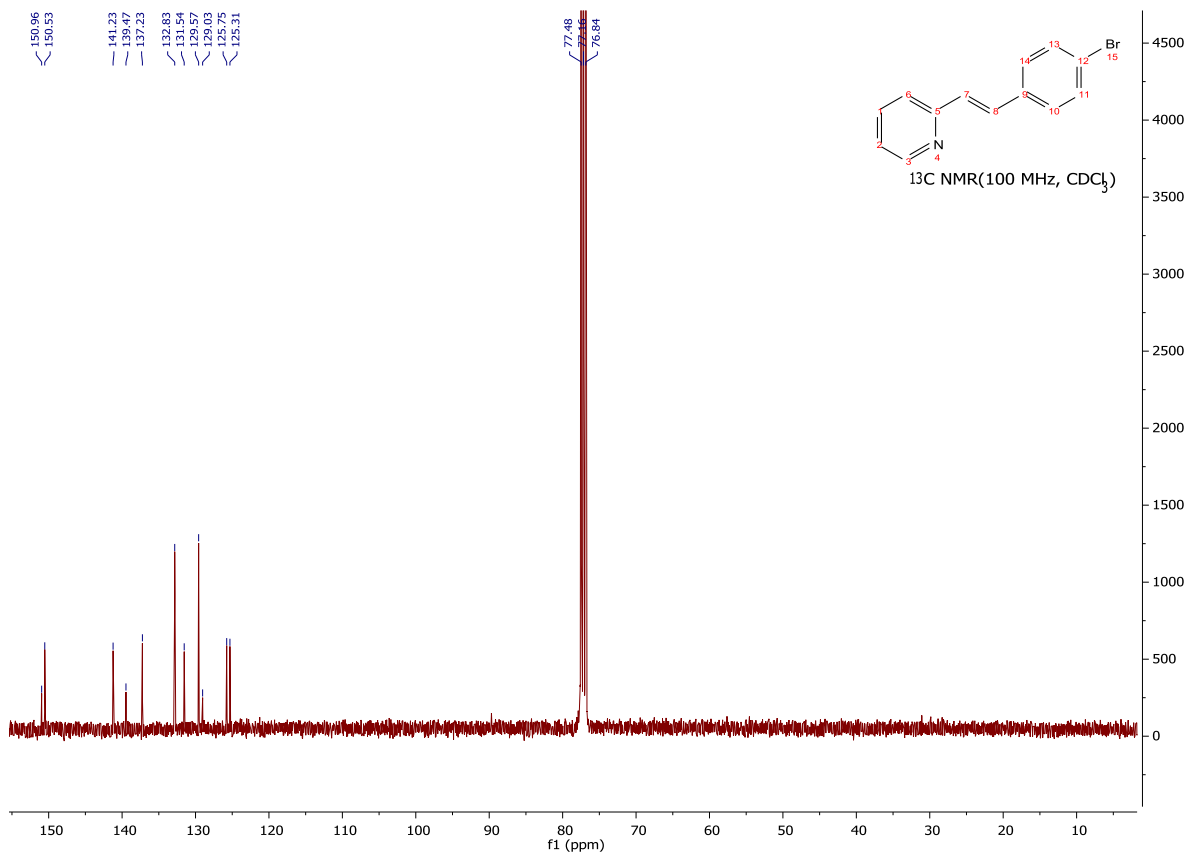
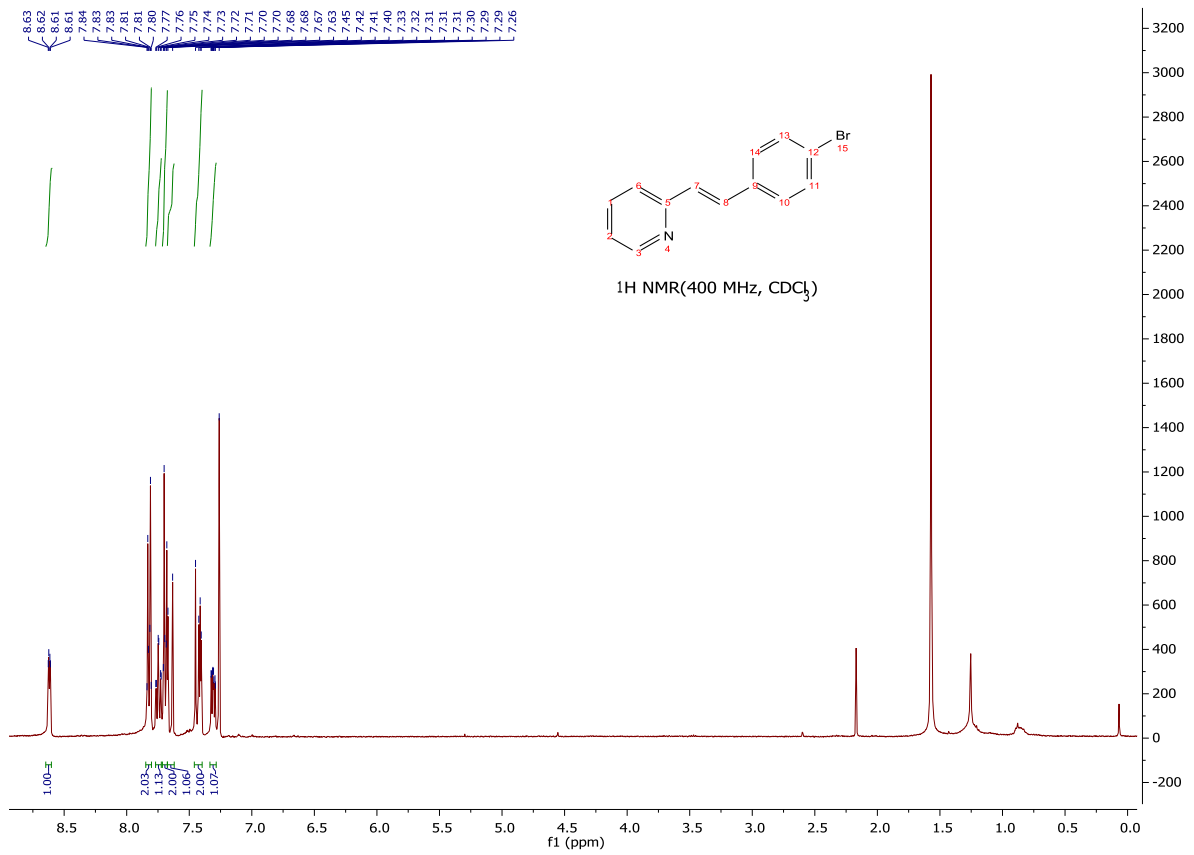
(16)



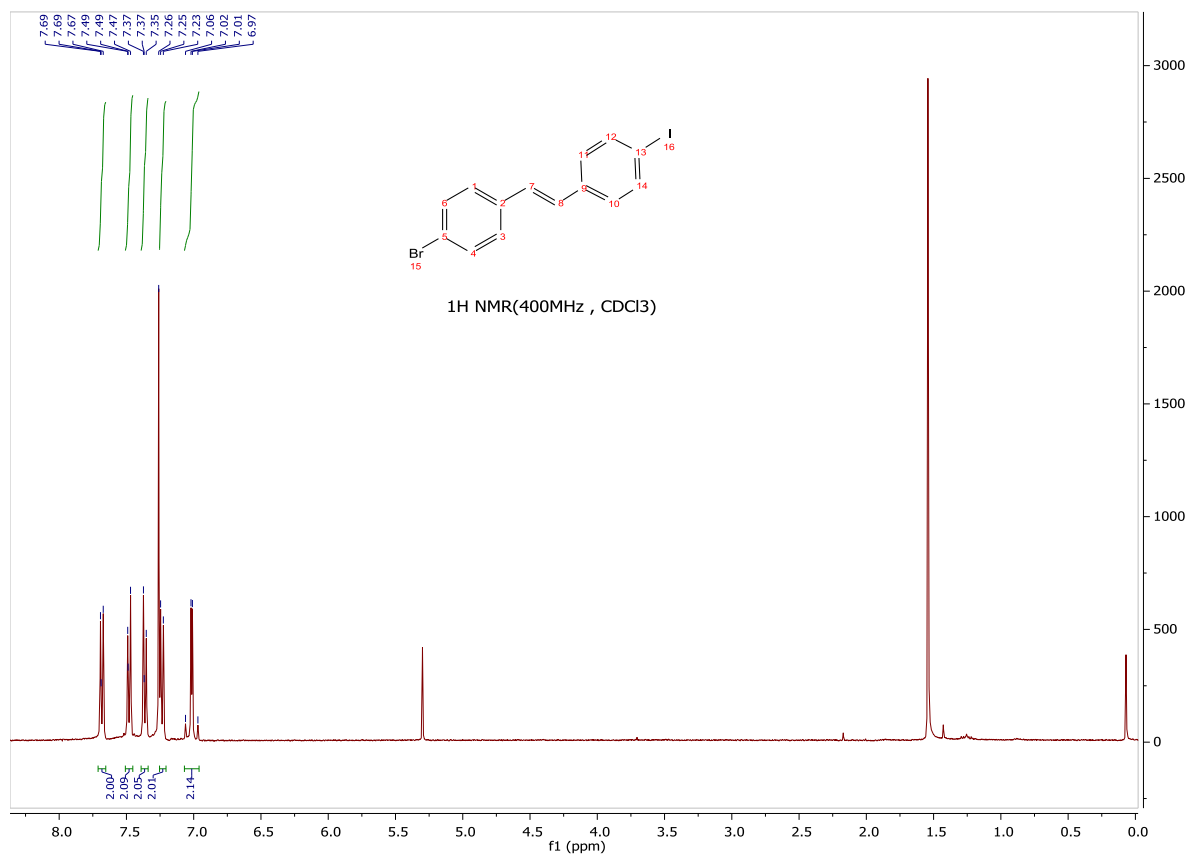
(17)



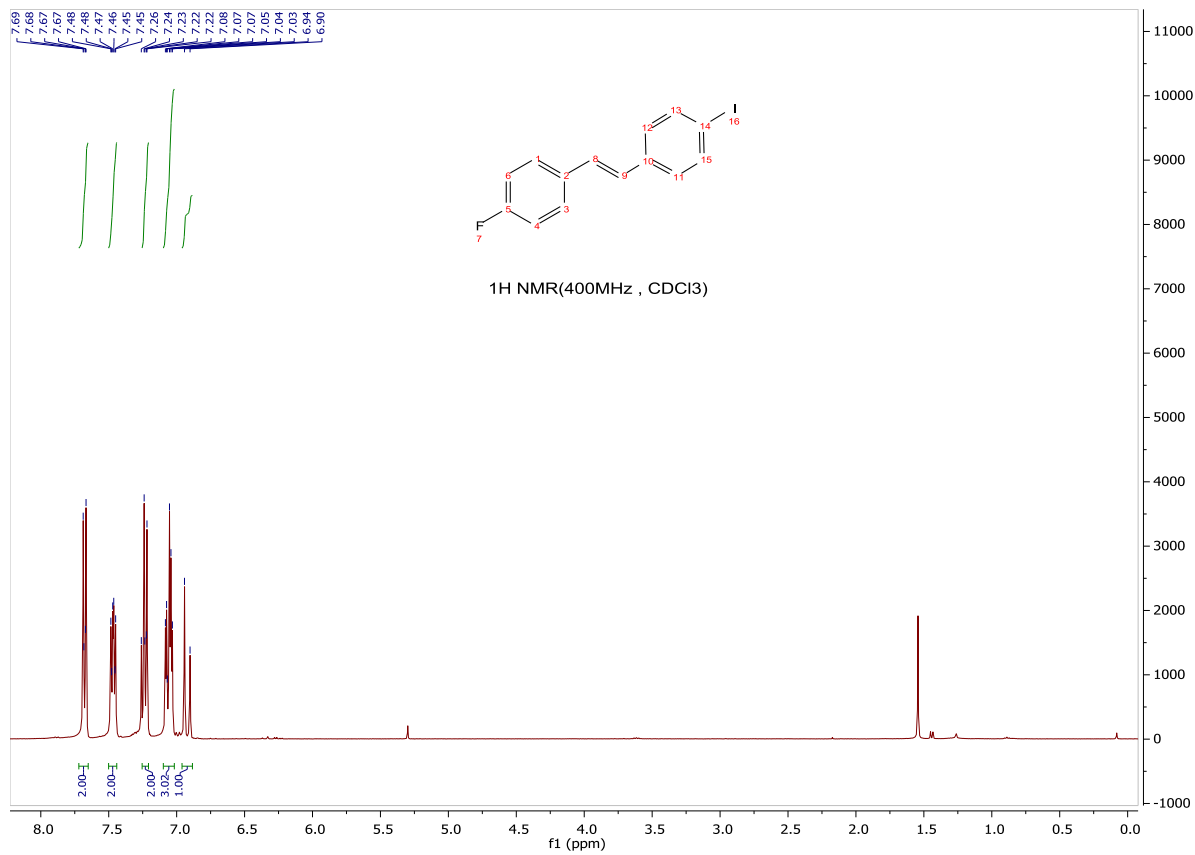
(18)



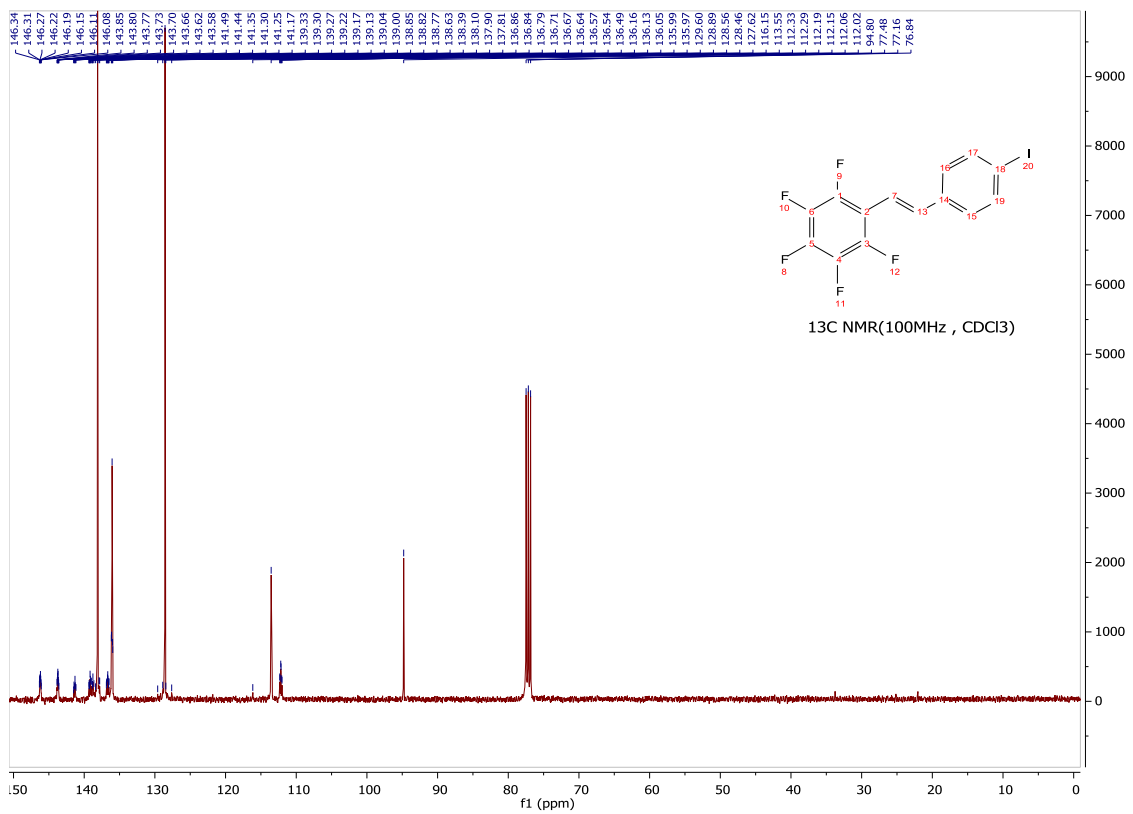
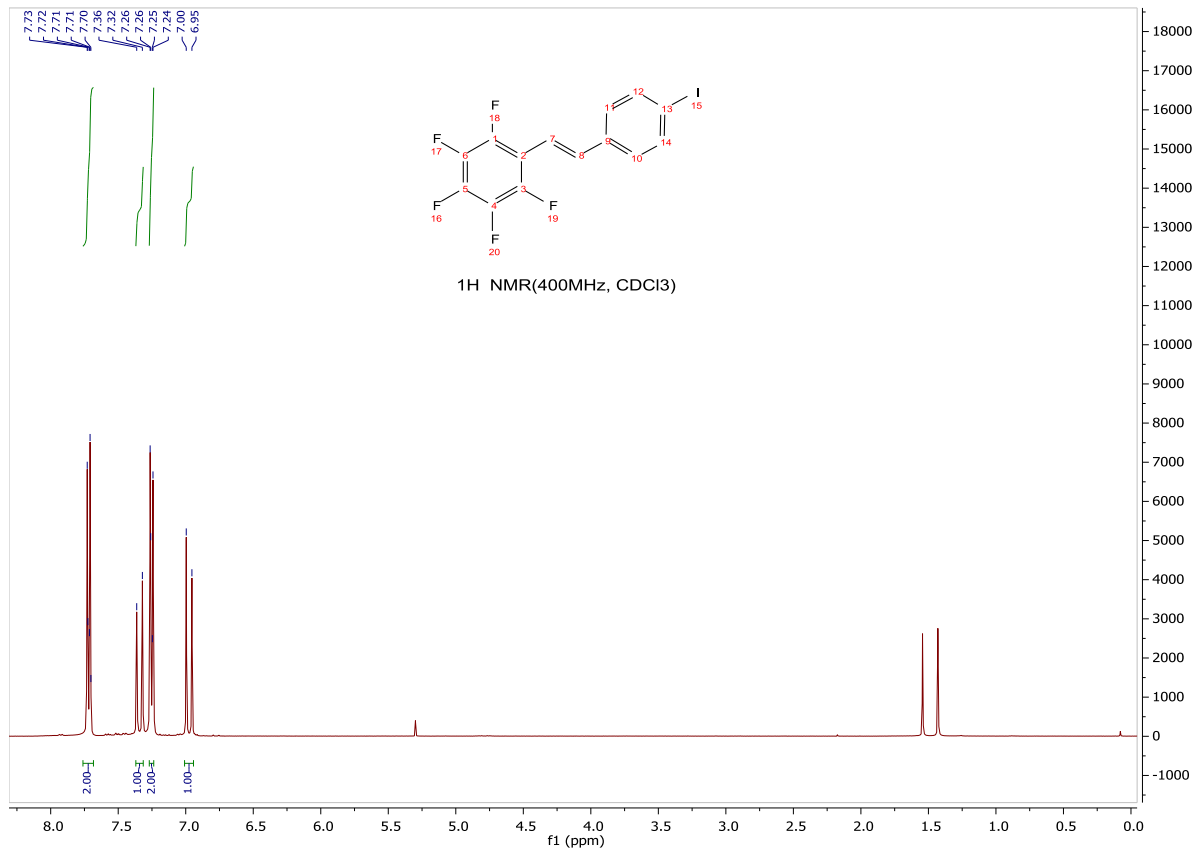
(19)



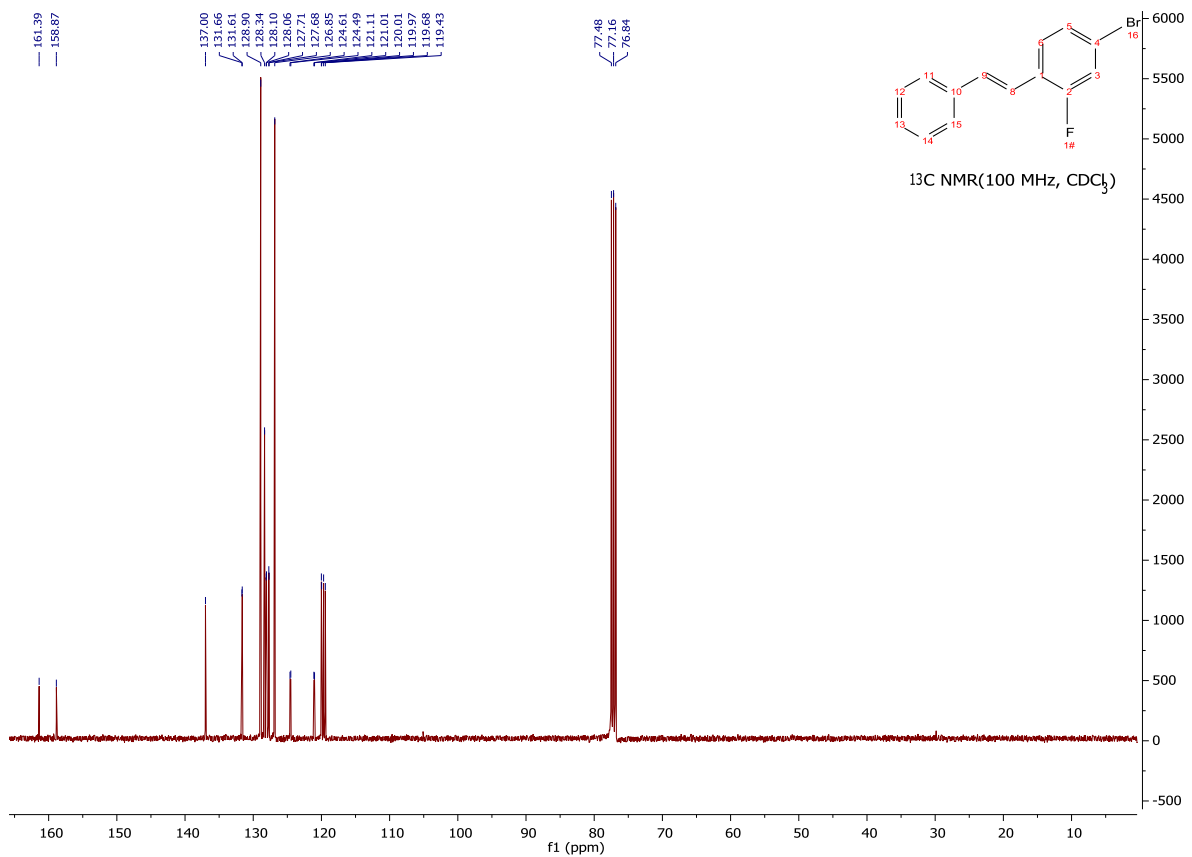
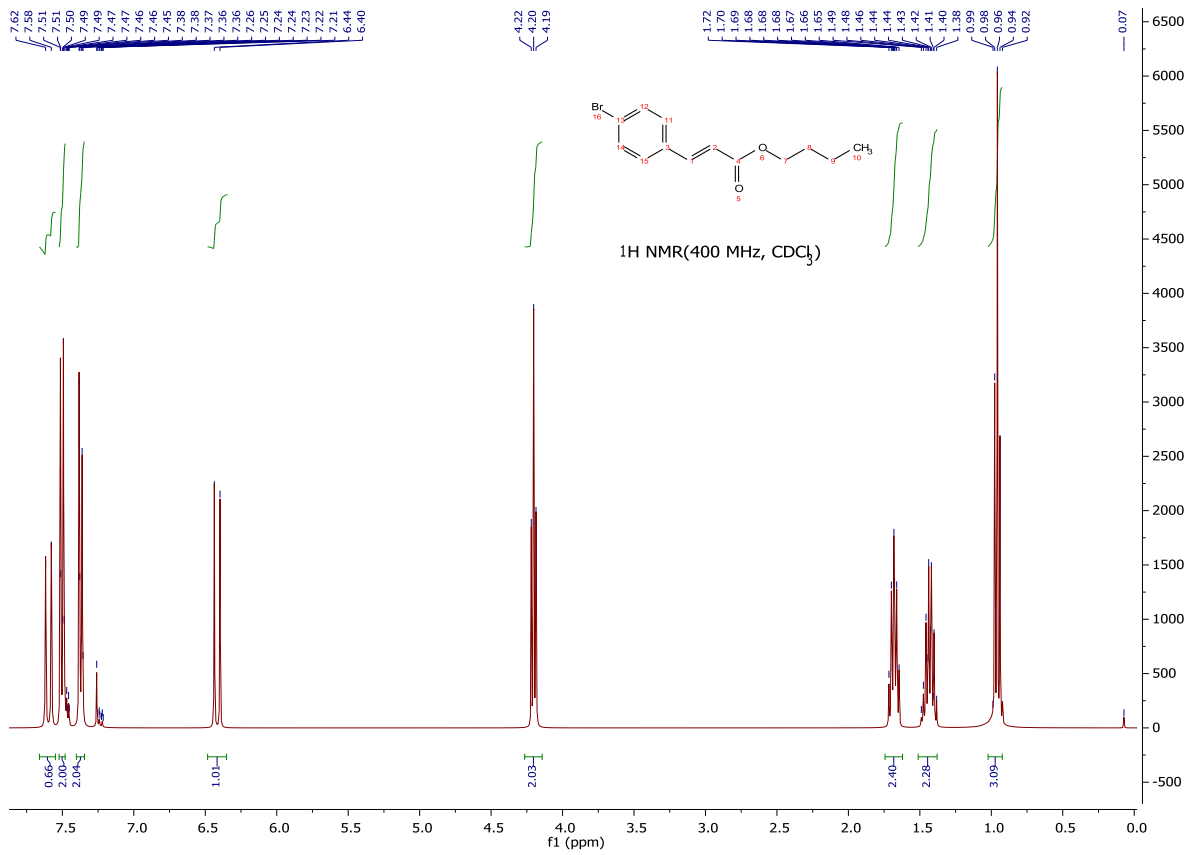
(20)



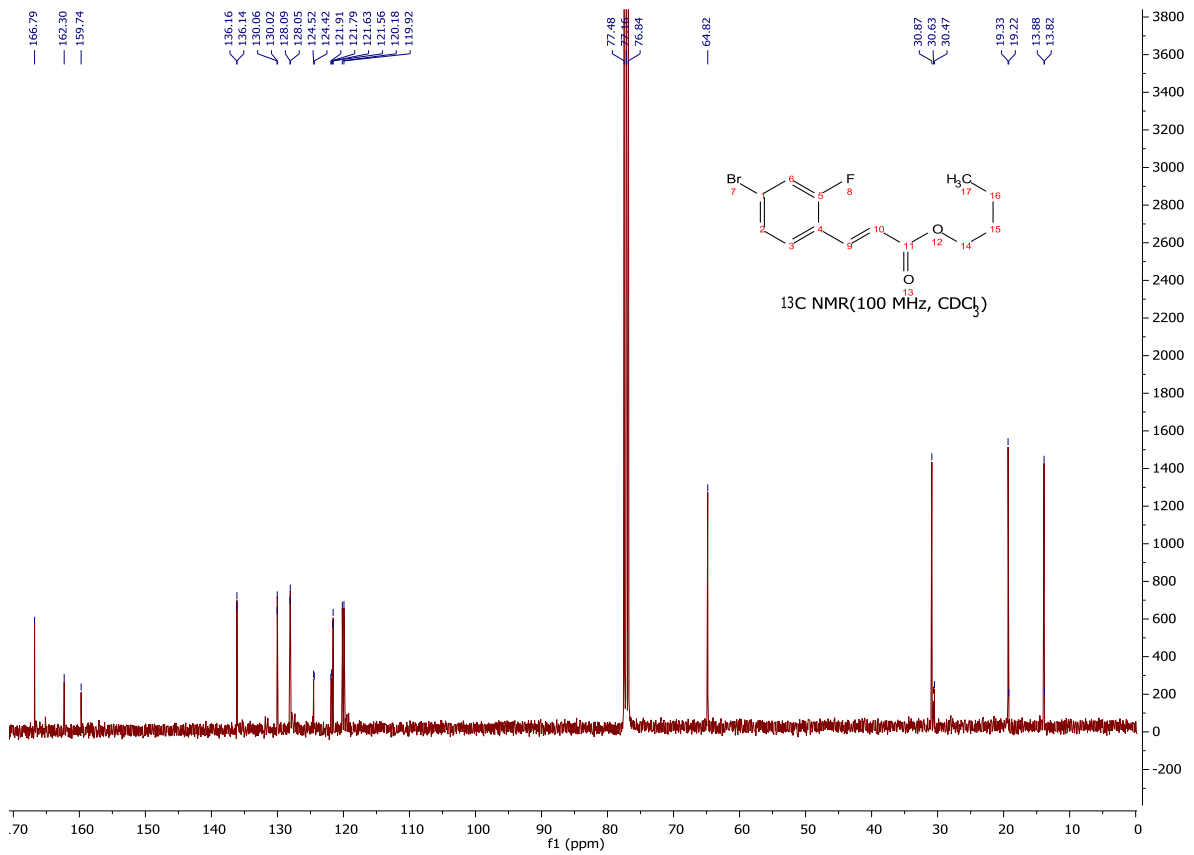
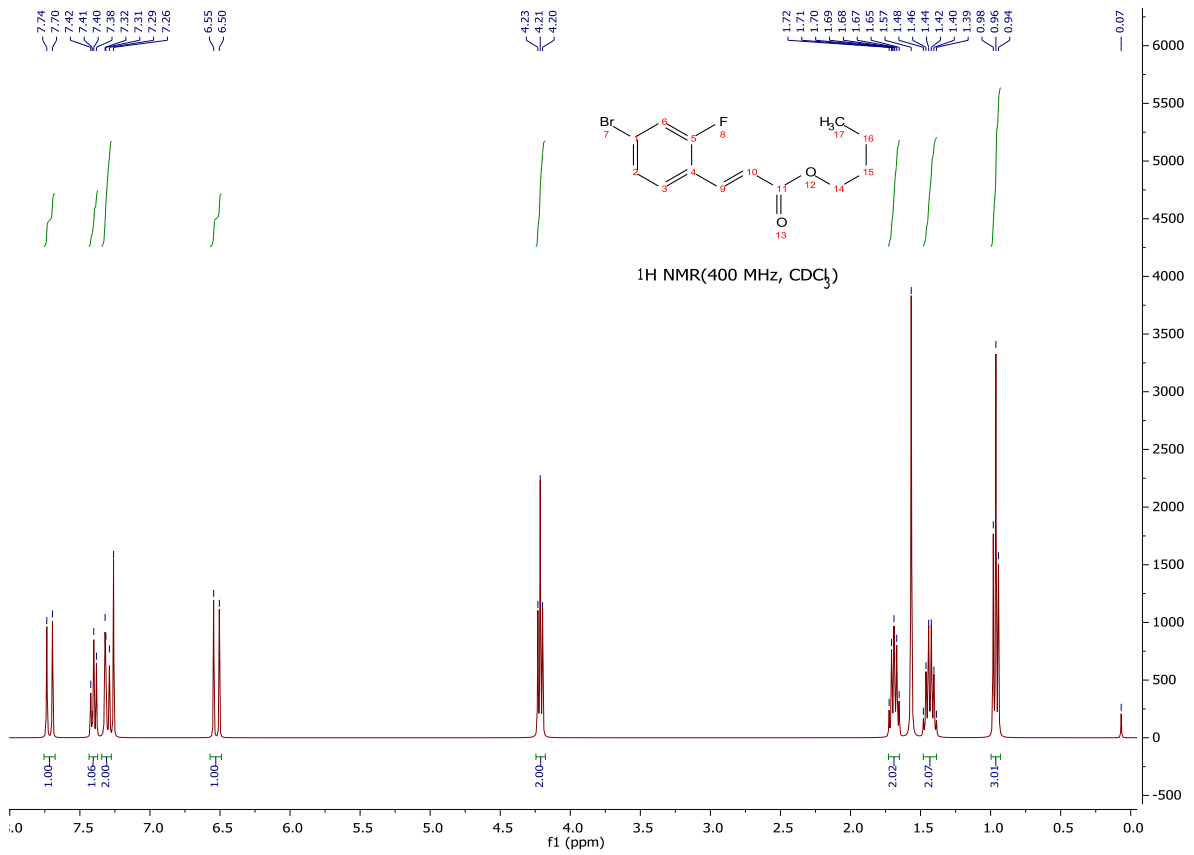
(21)



(22)

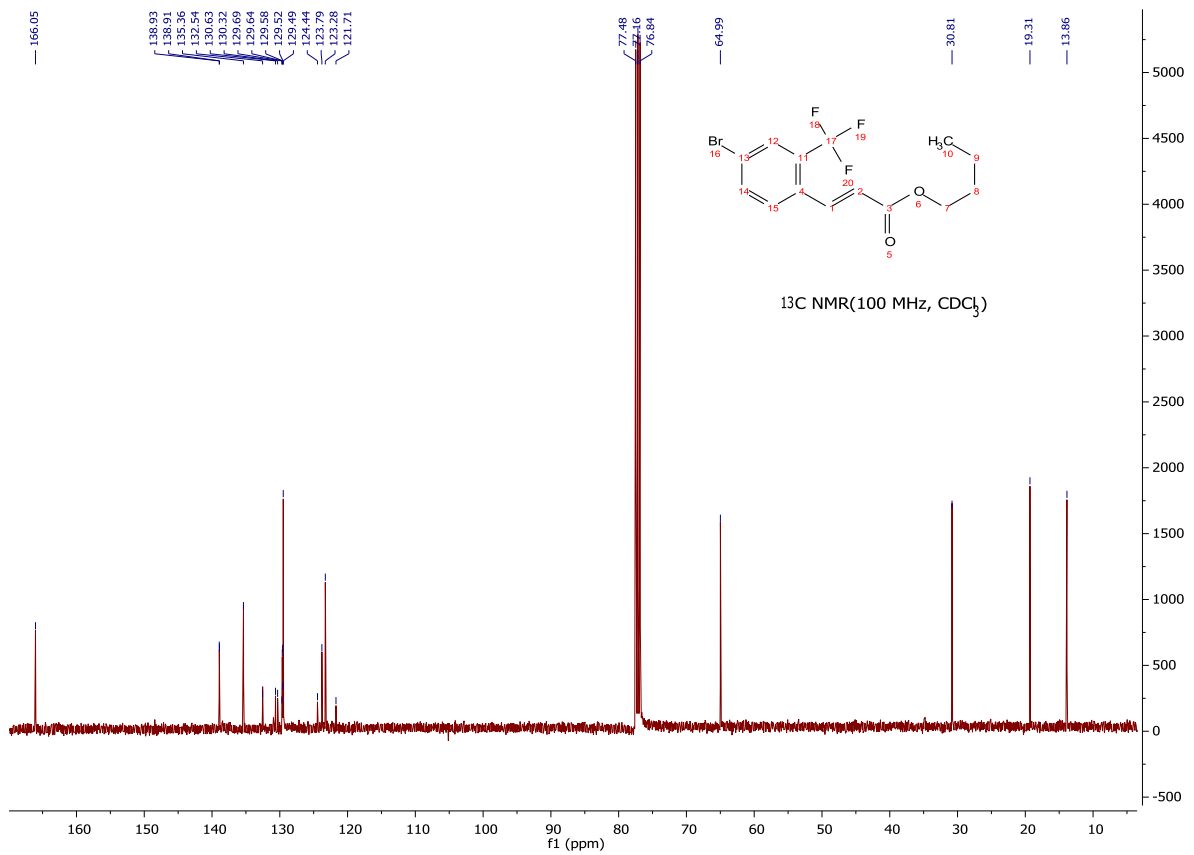
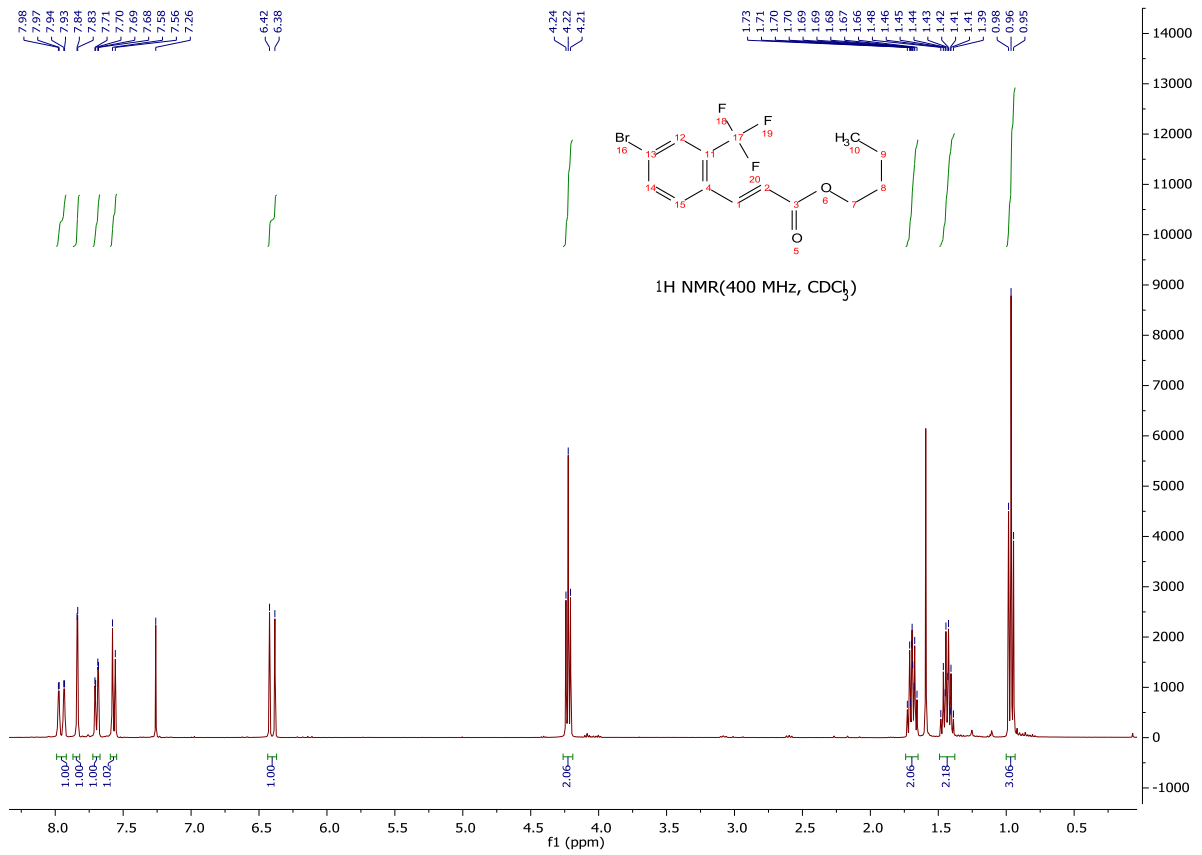


(23)

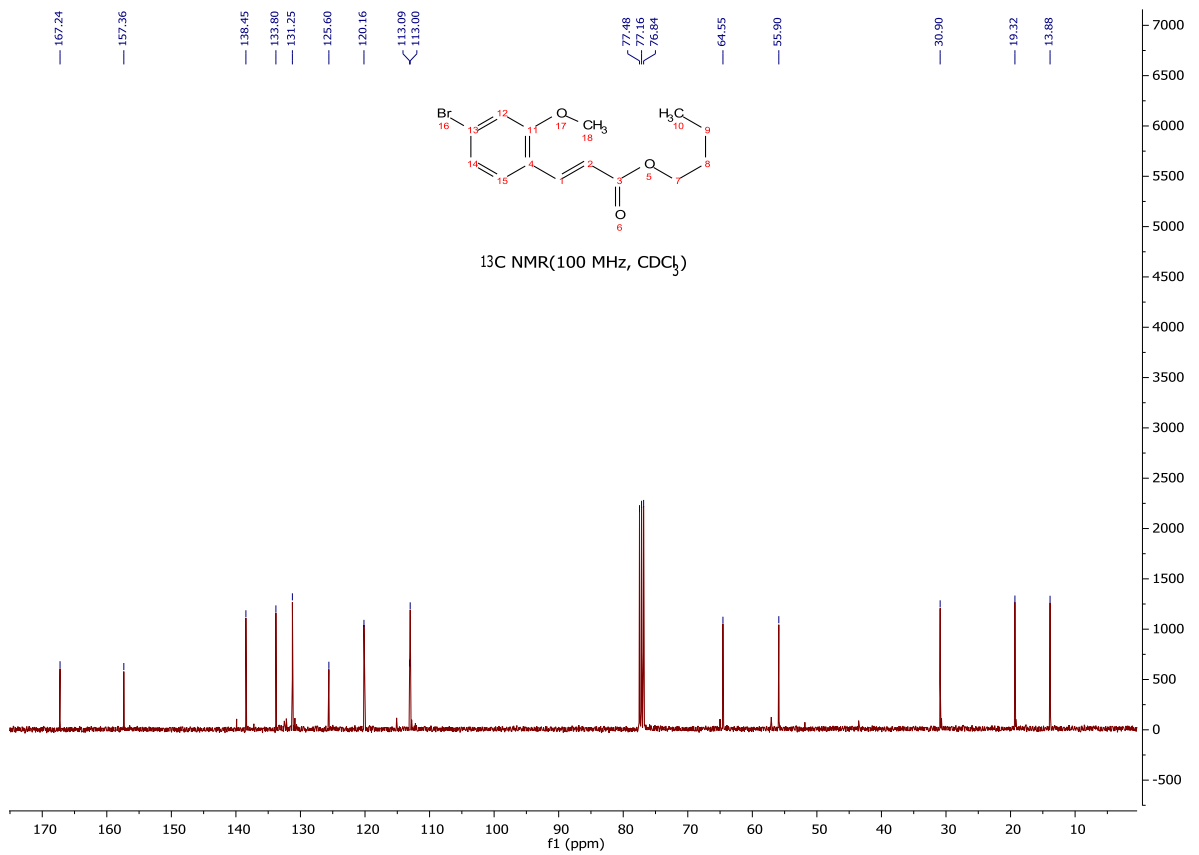
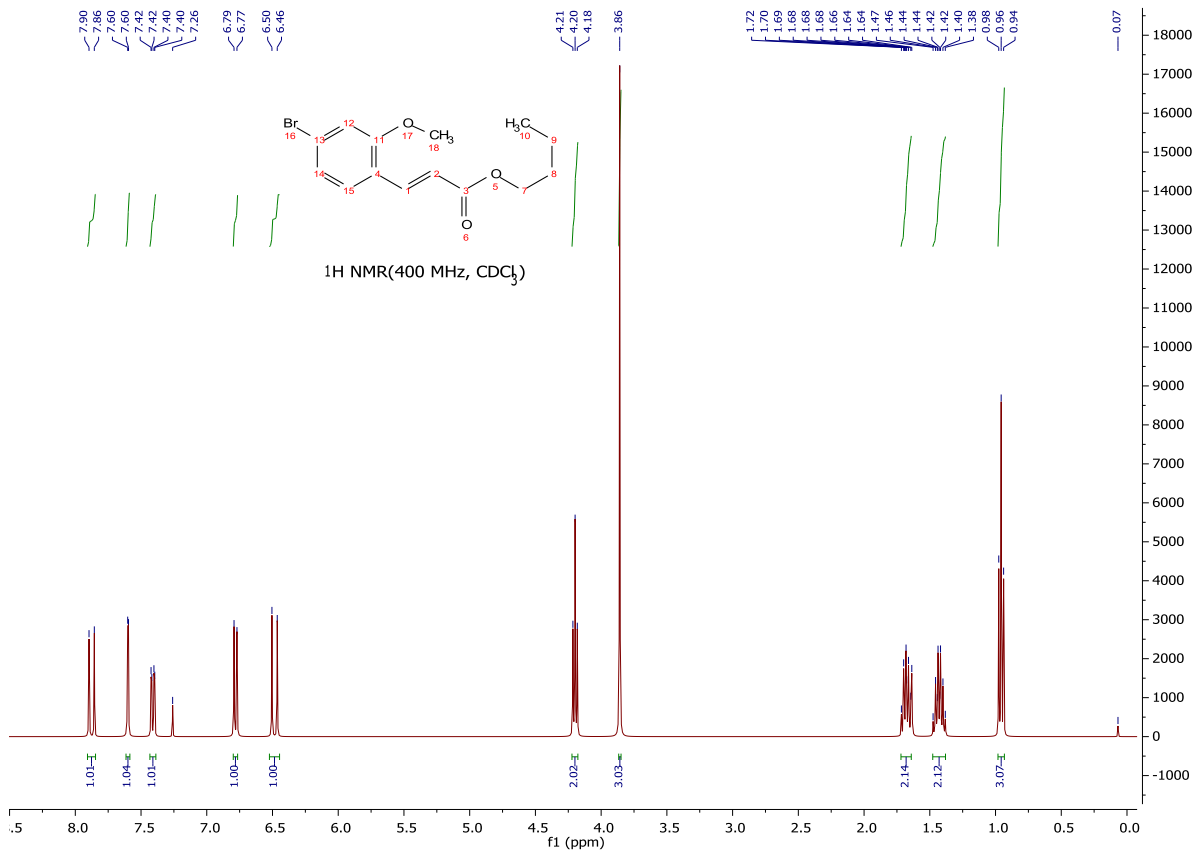




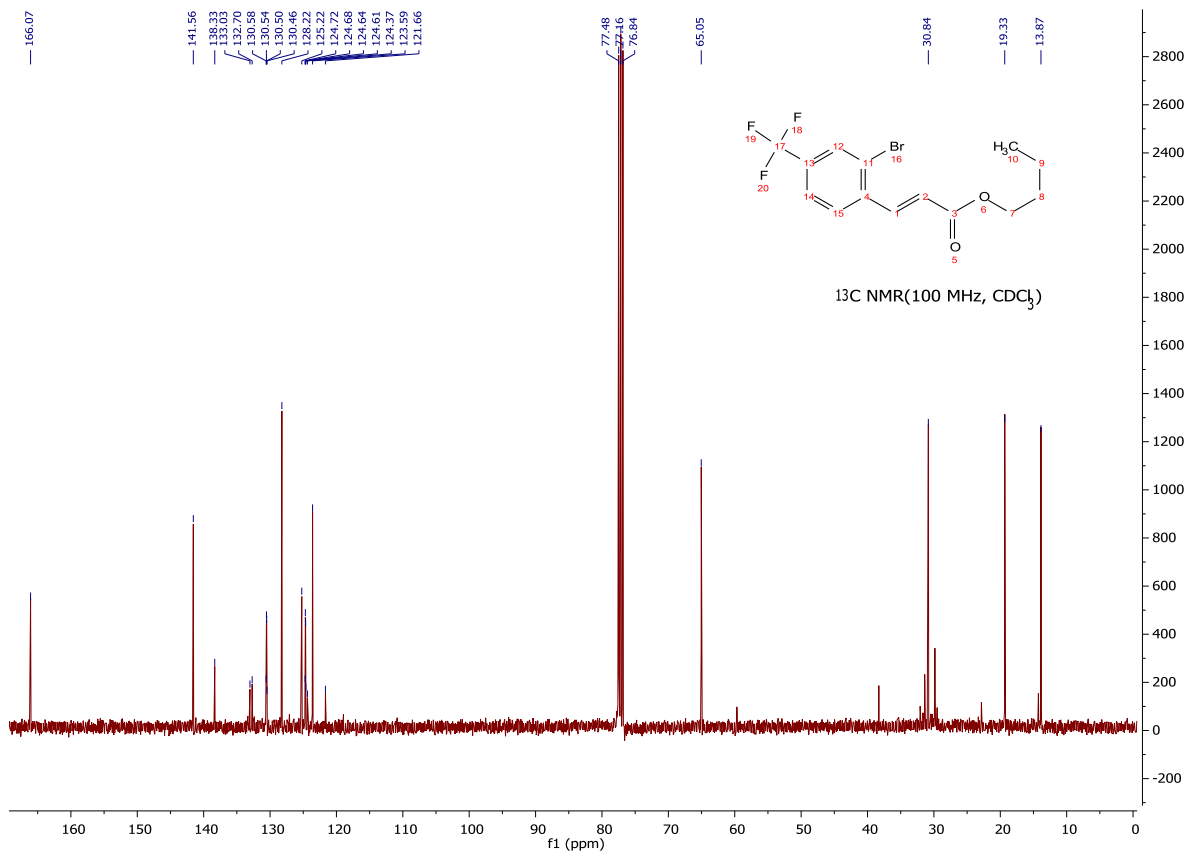
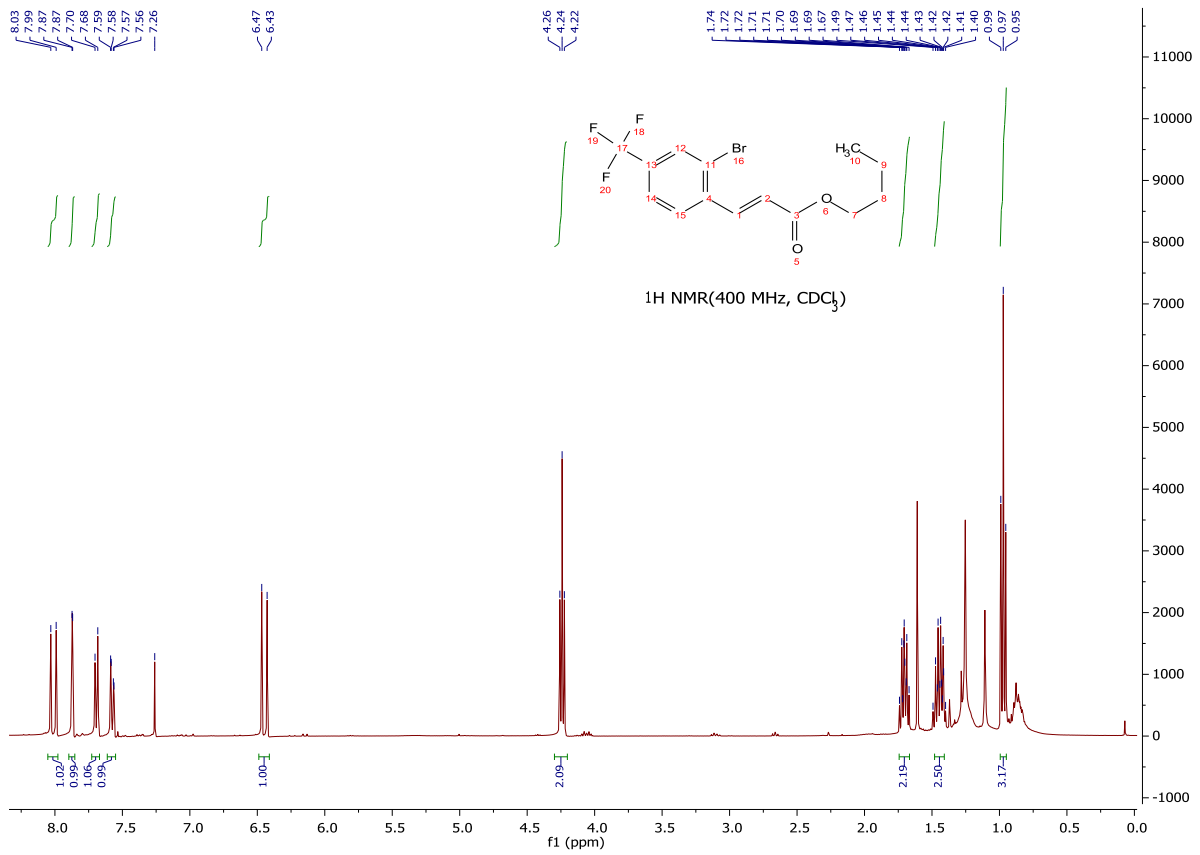
(24)



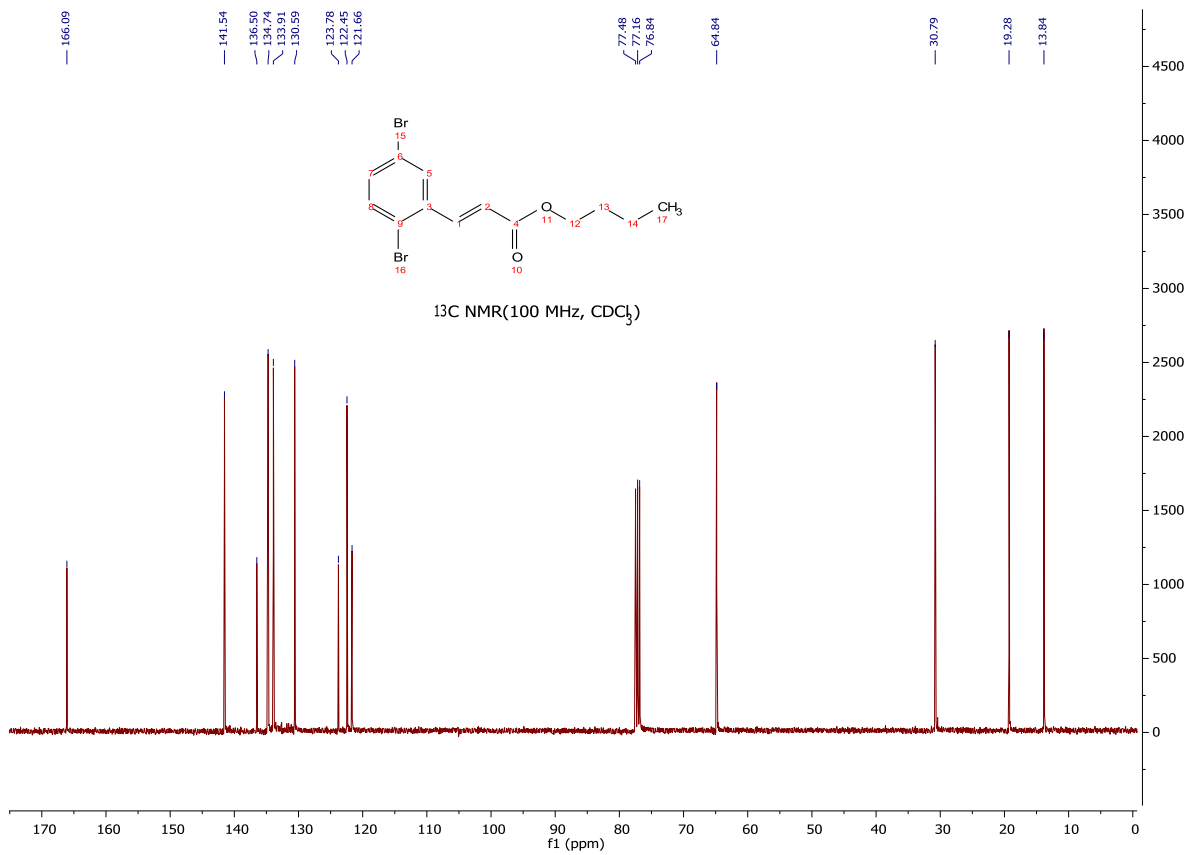
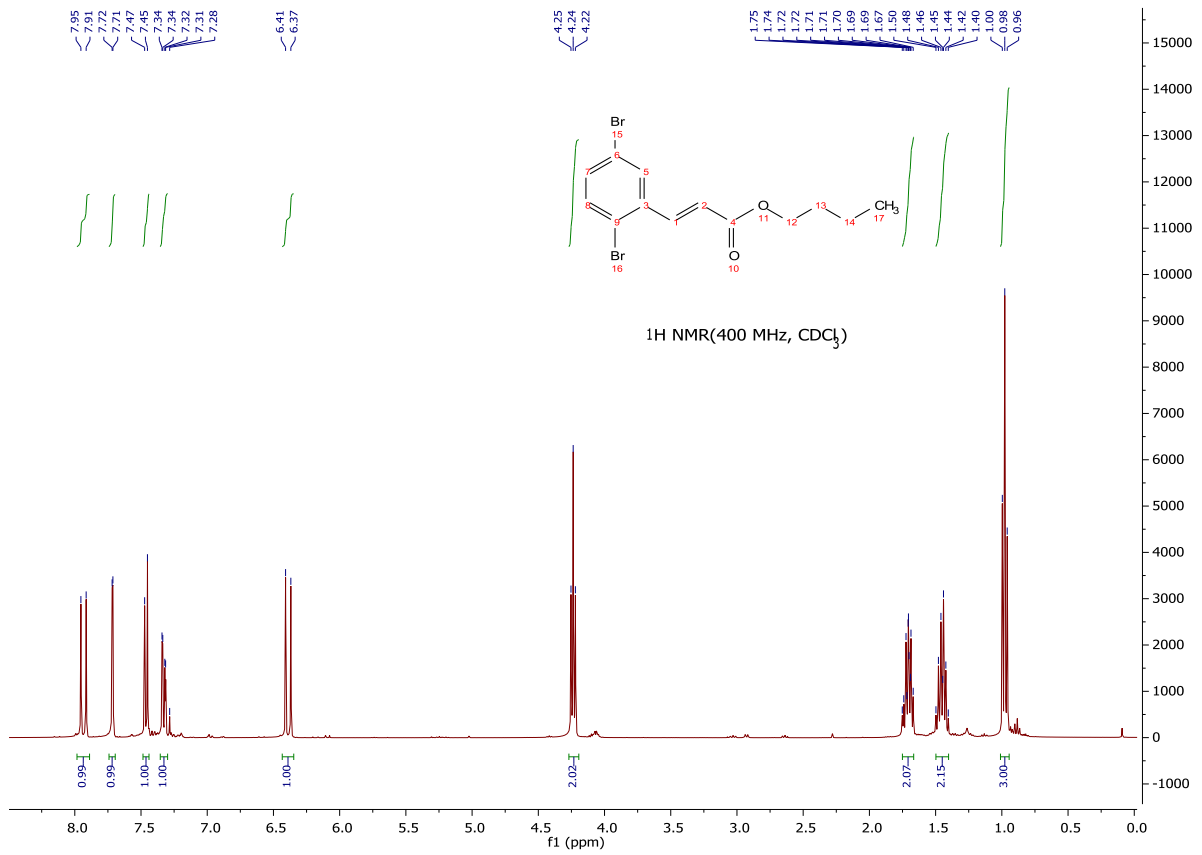
(25)



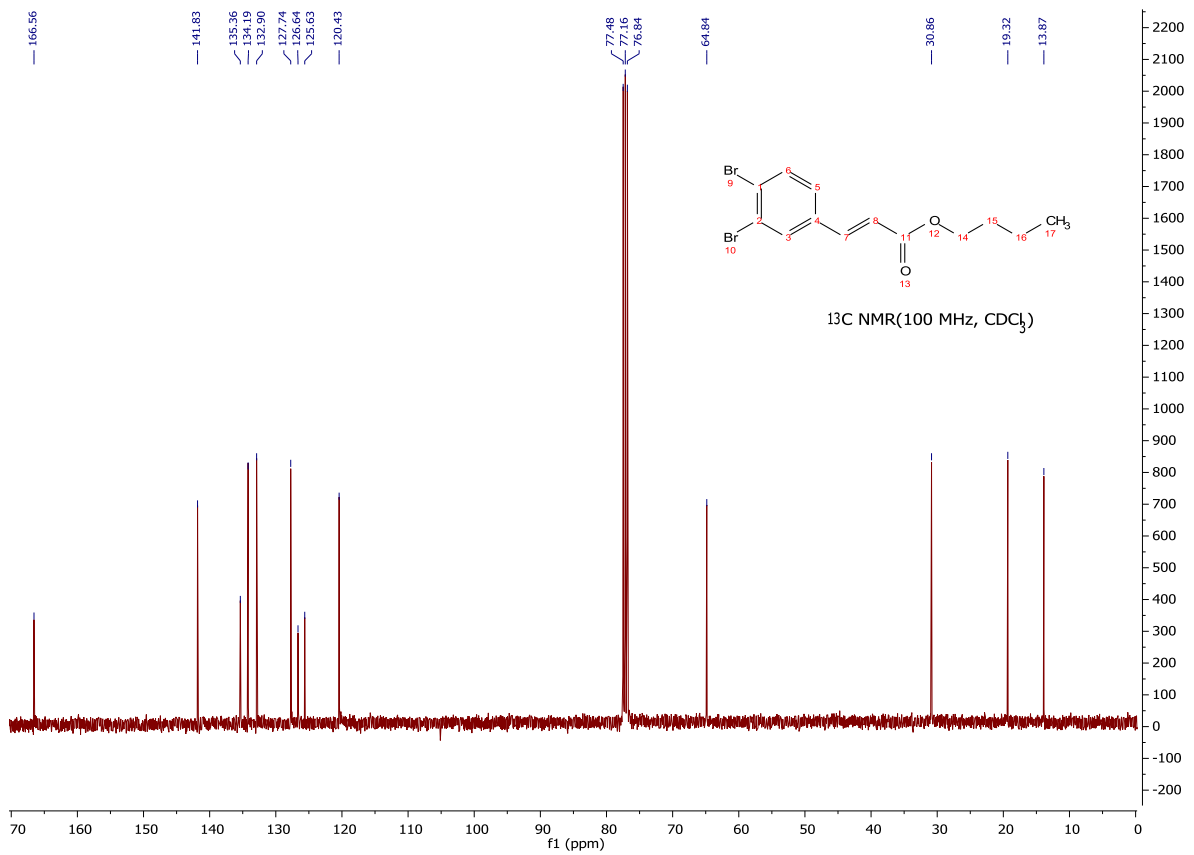
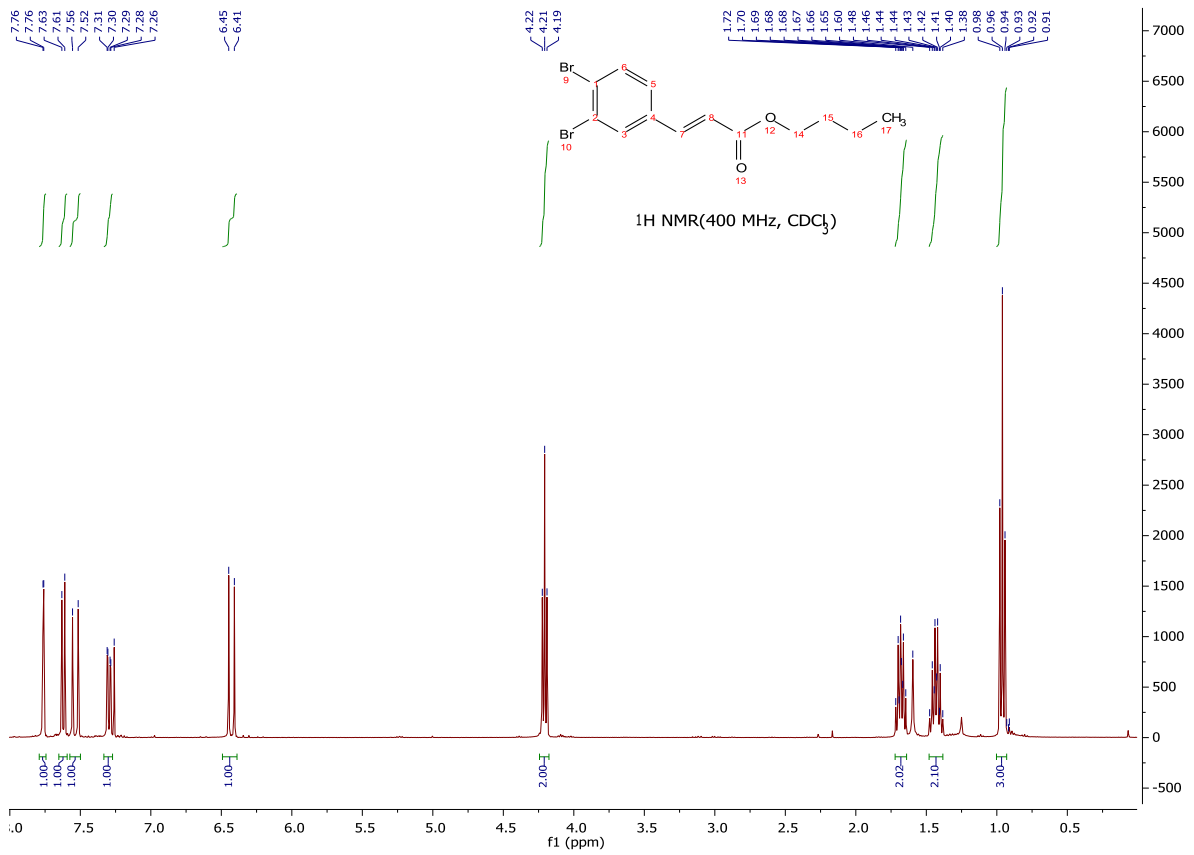
(26)



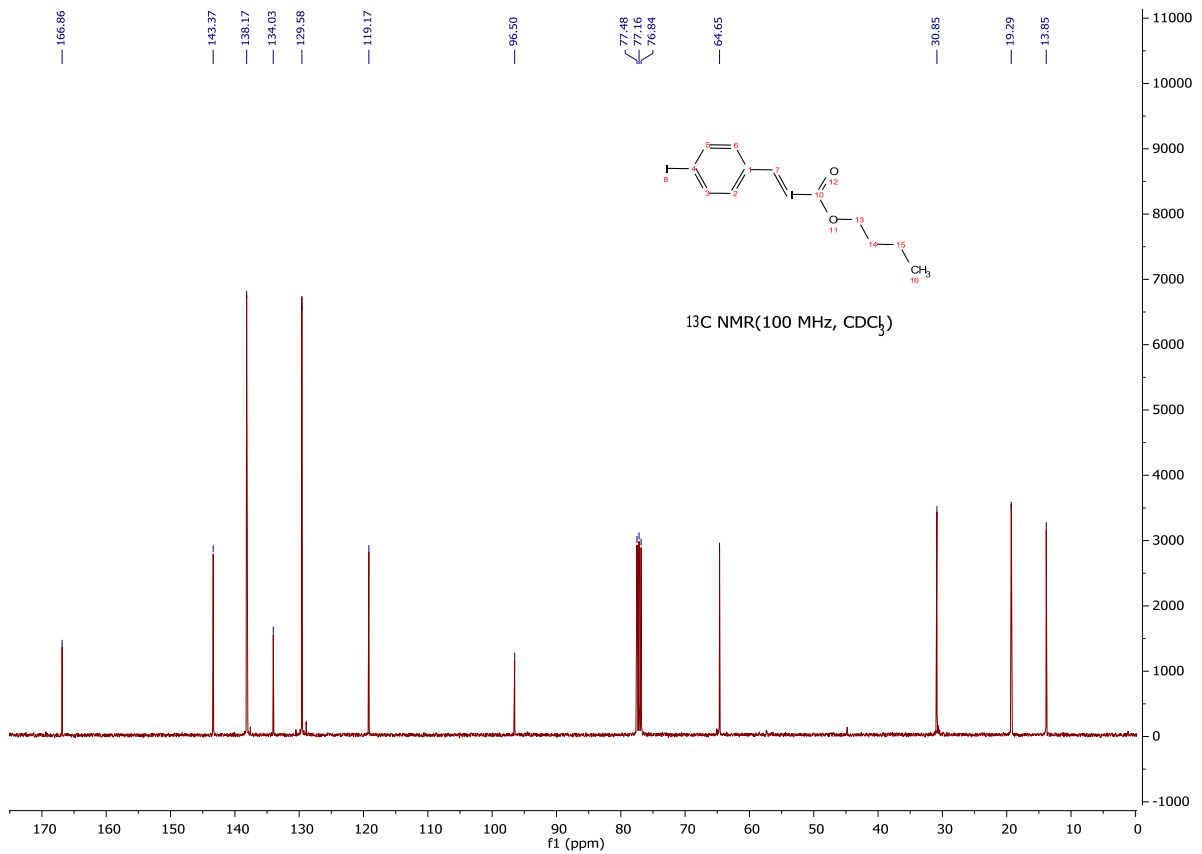
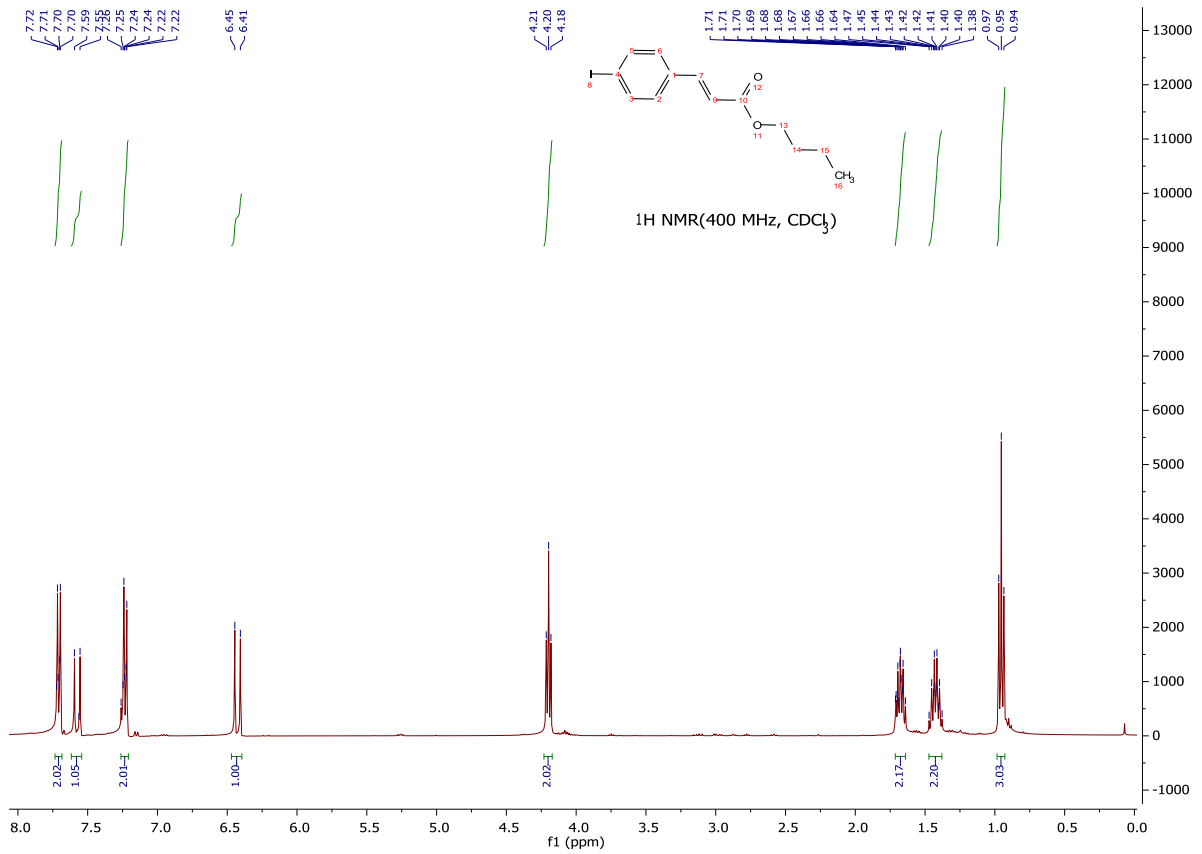
(27)



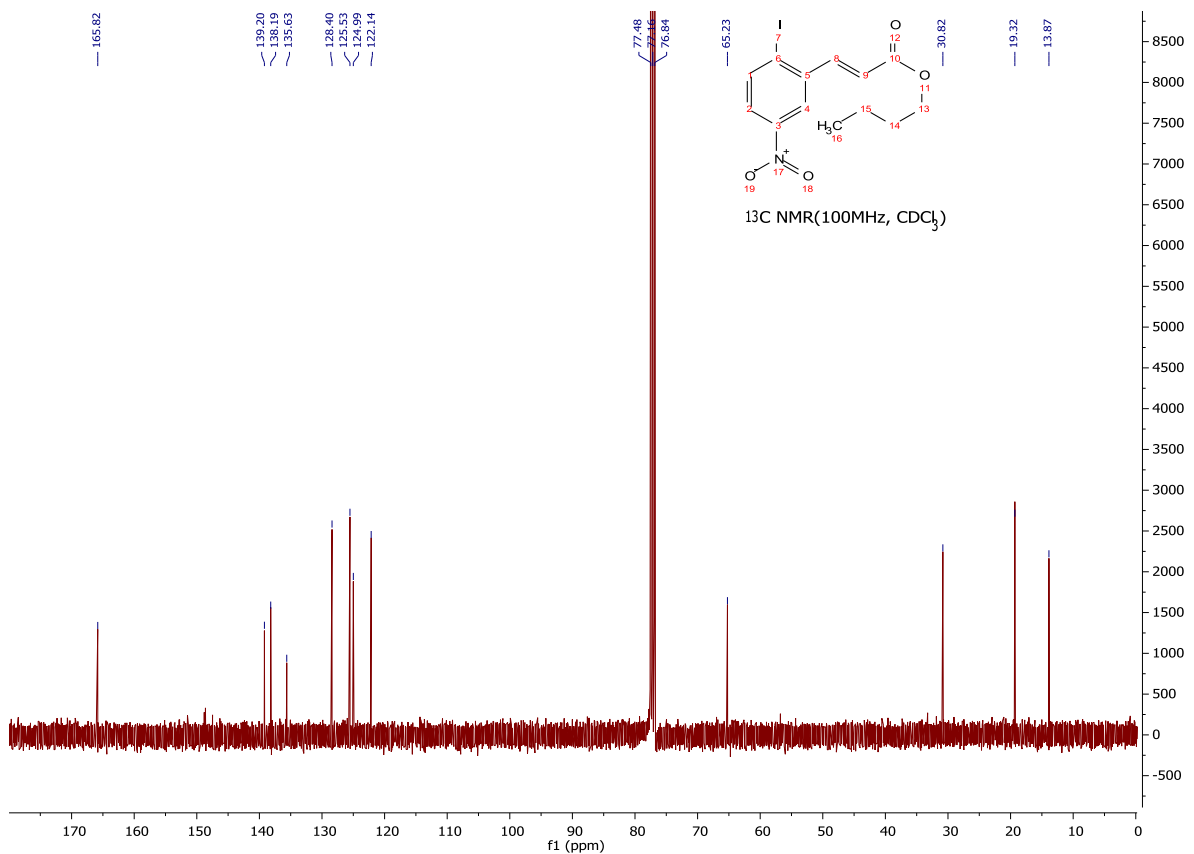
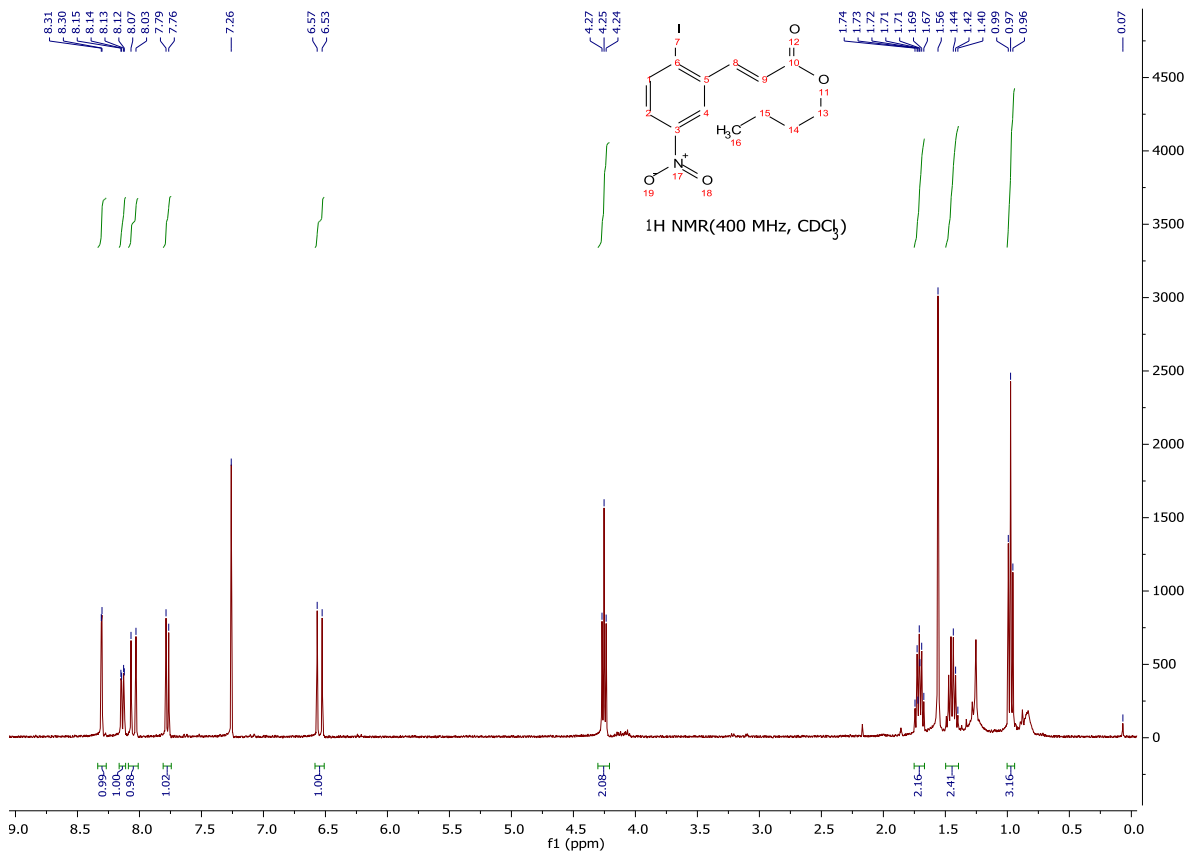
(28)



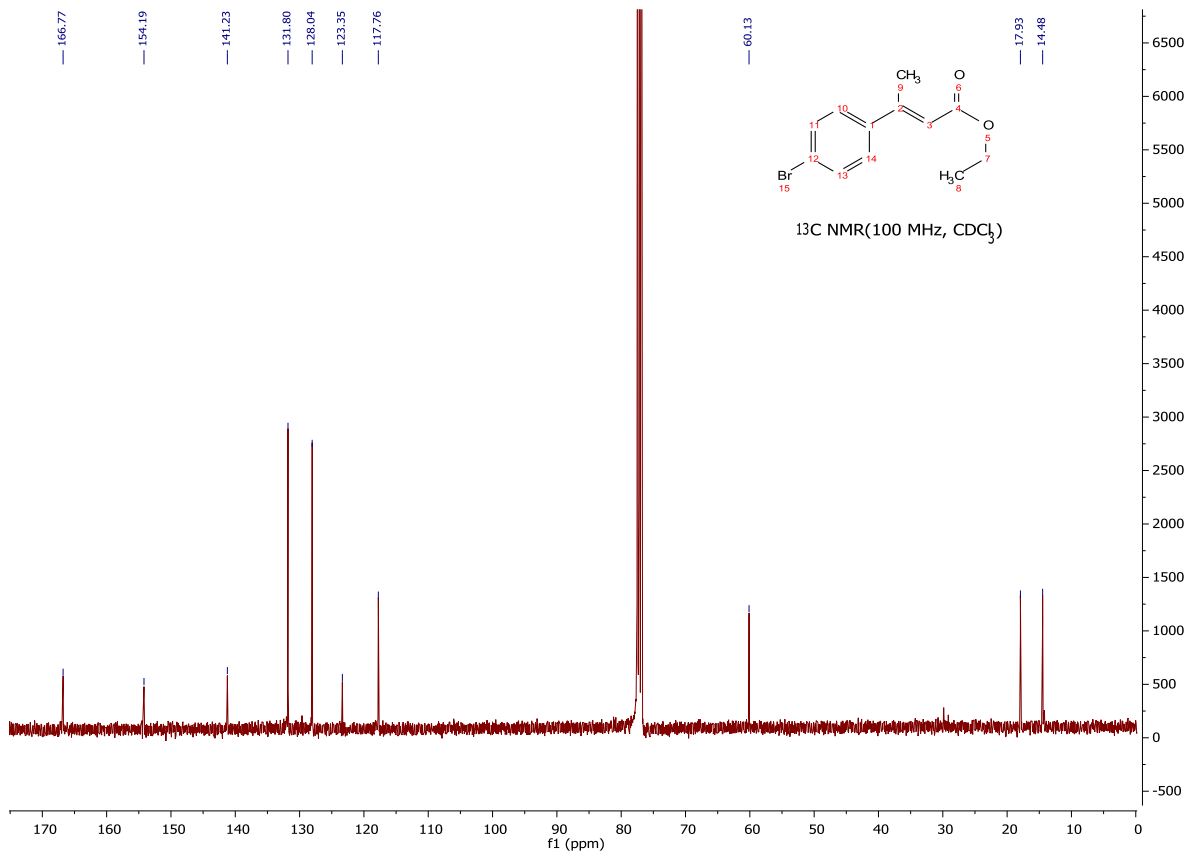
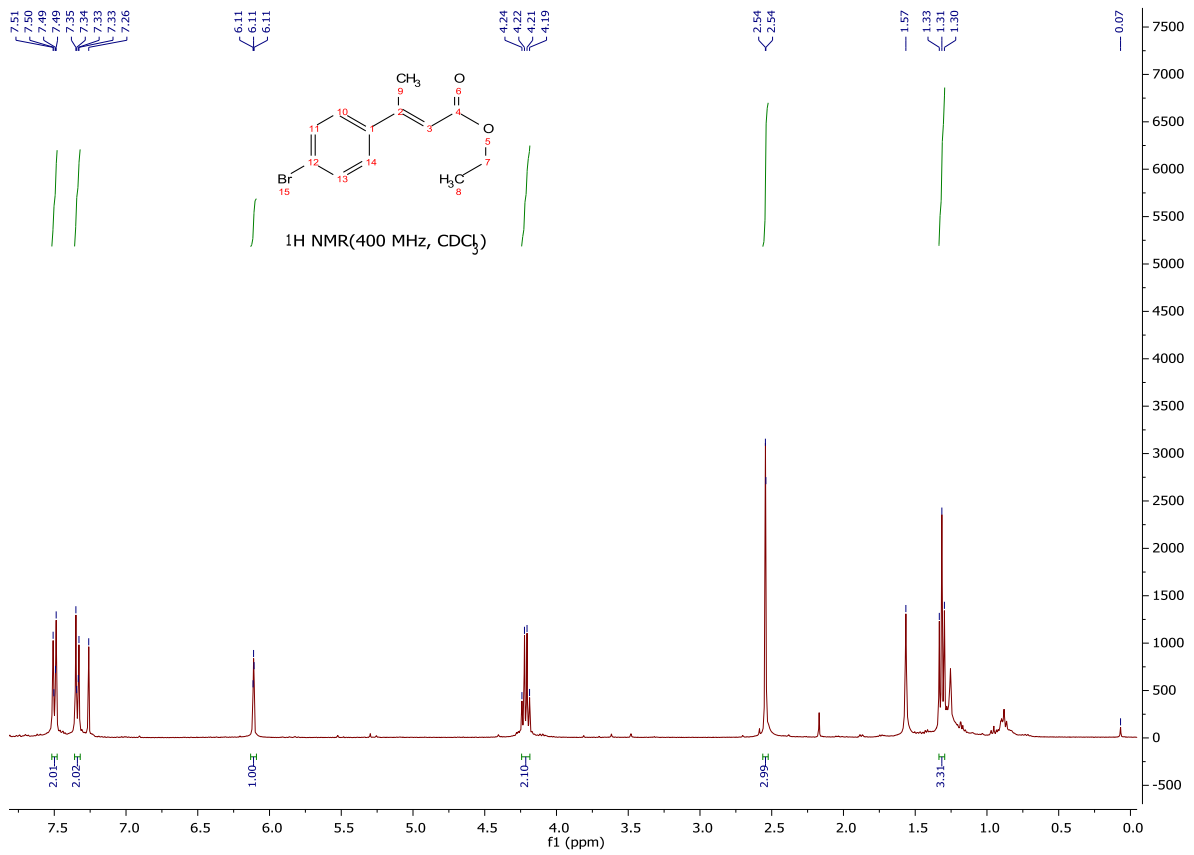
(29)



(30)

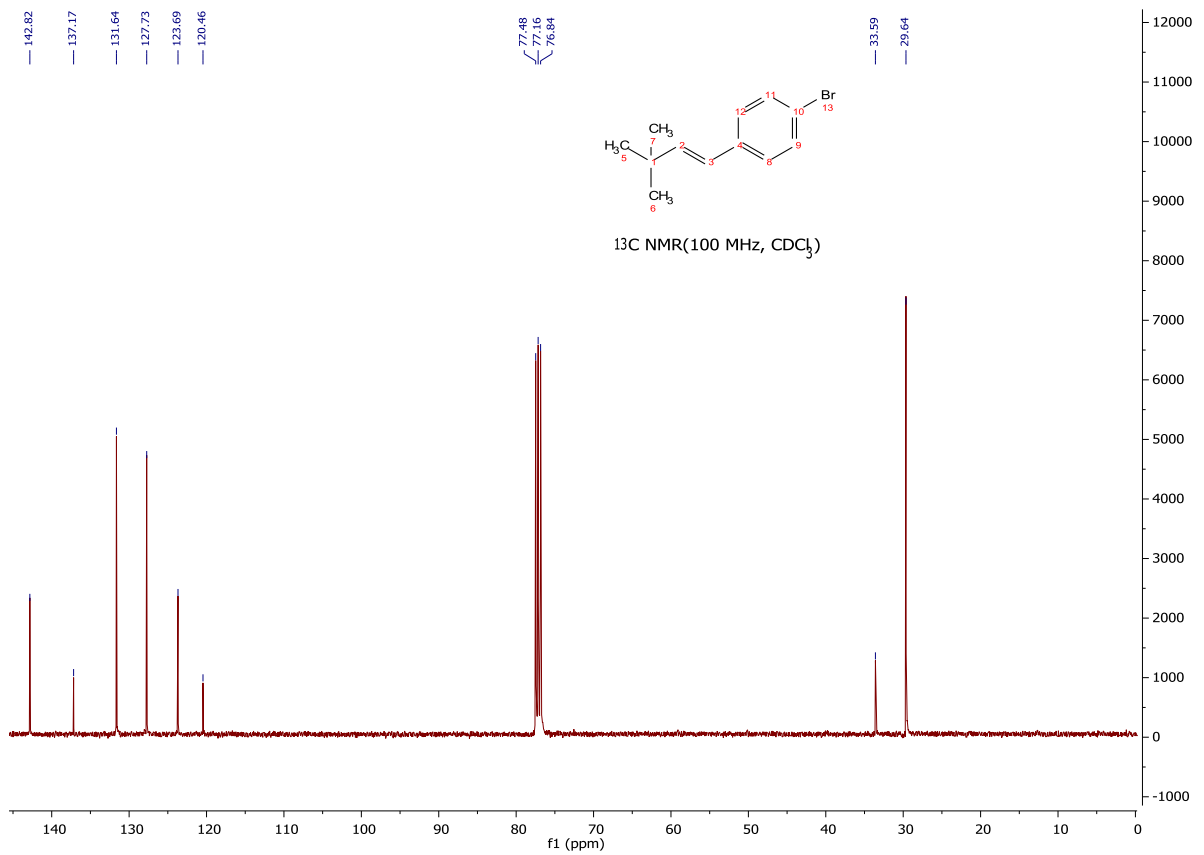
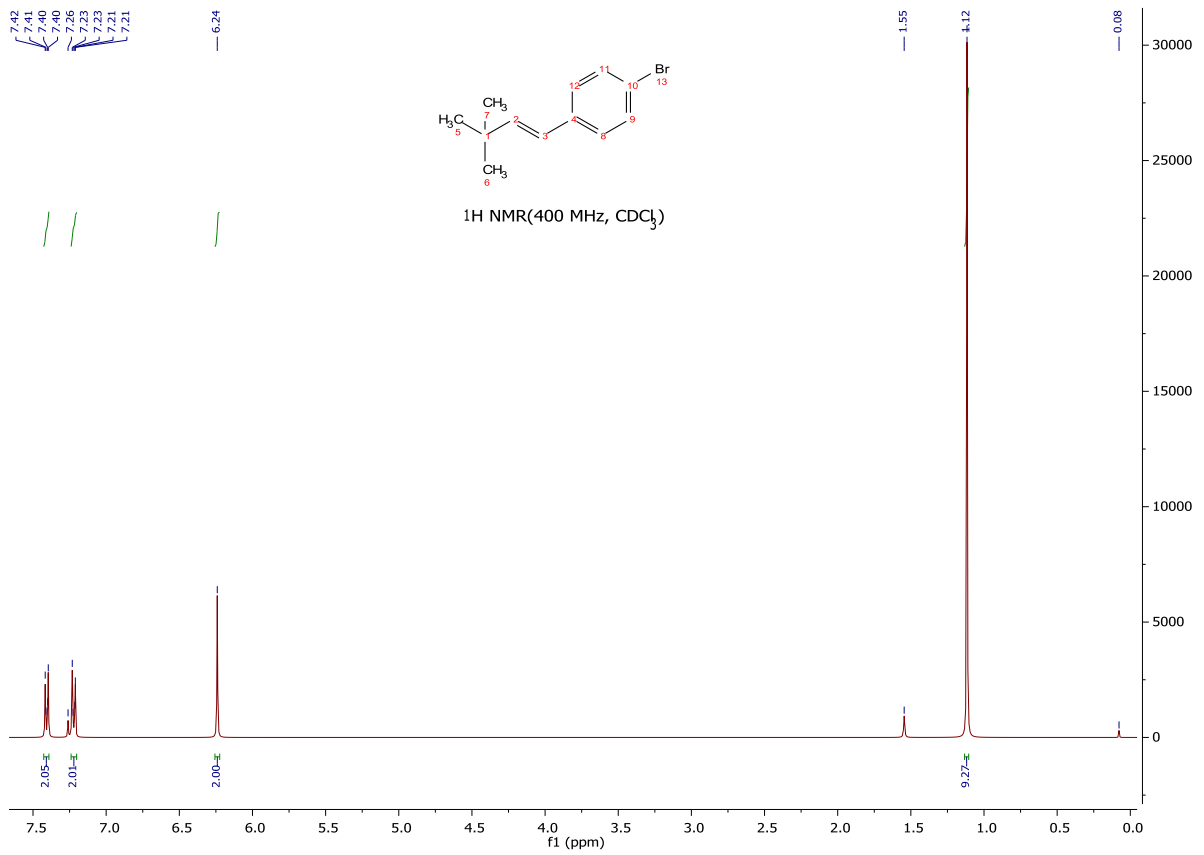


(31)

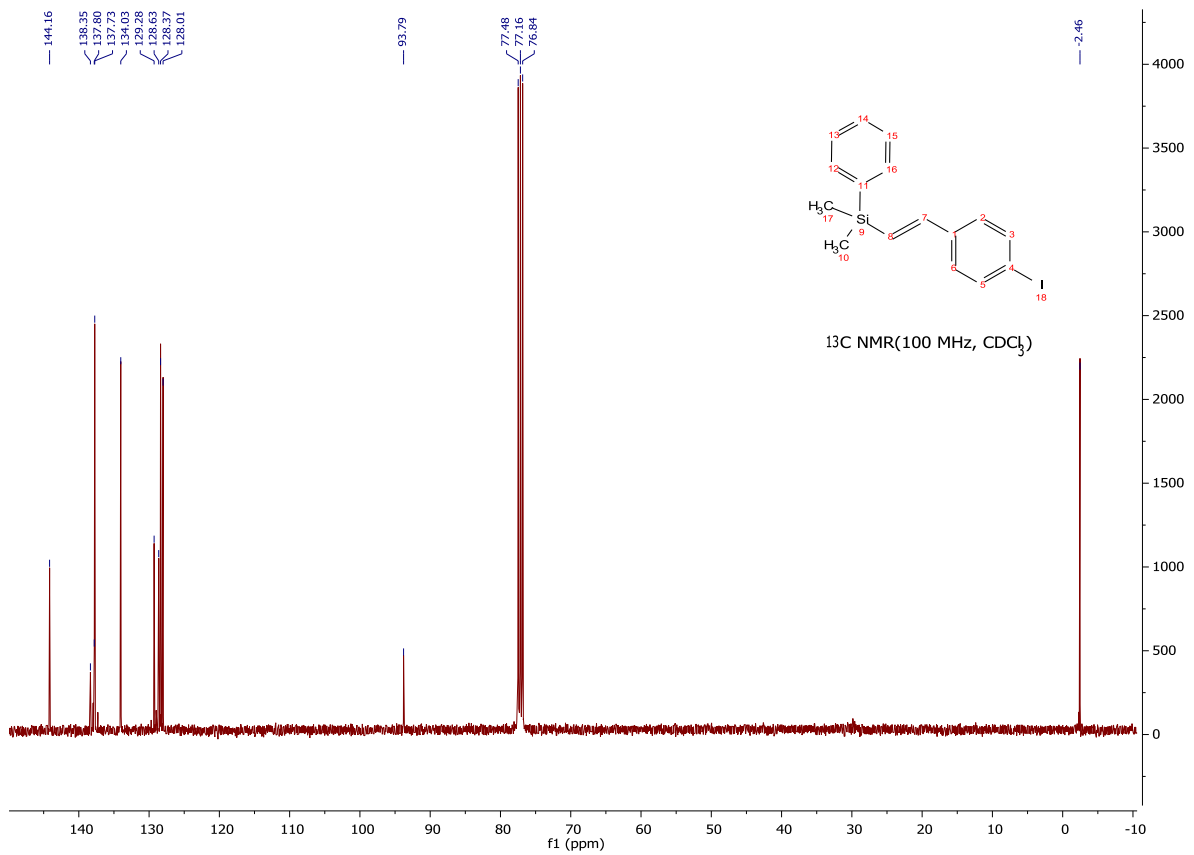
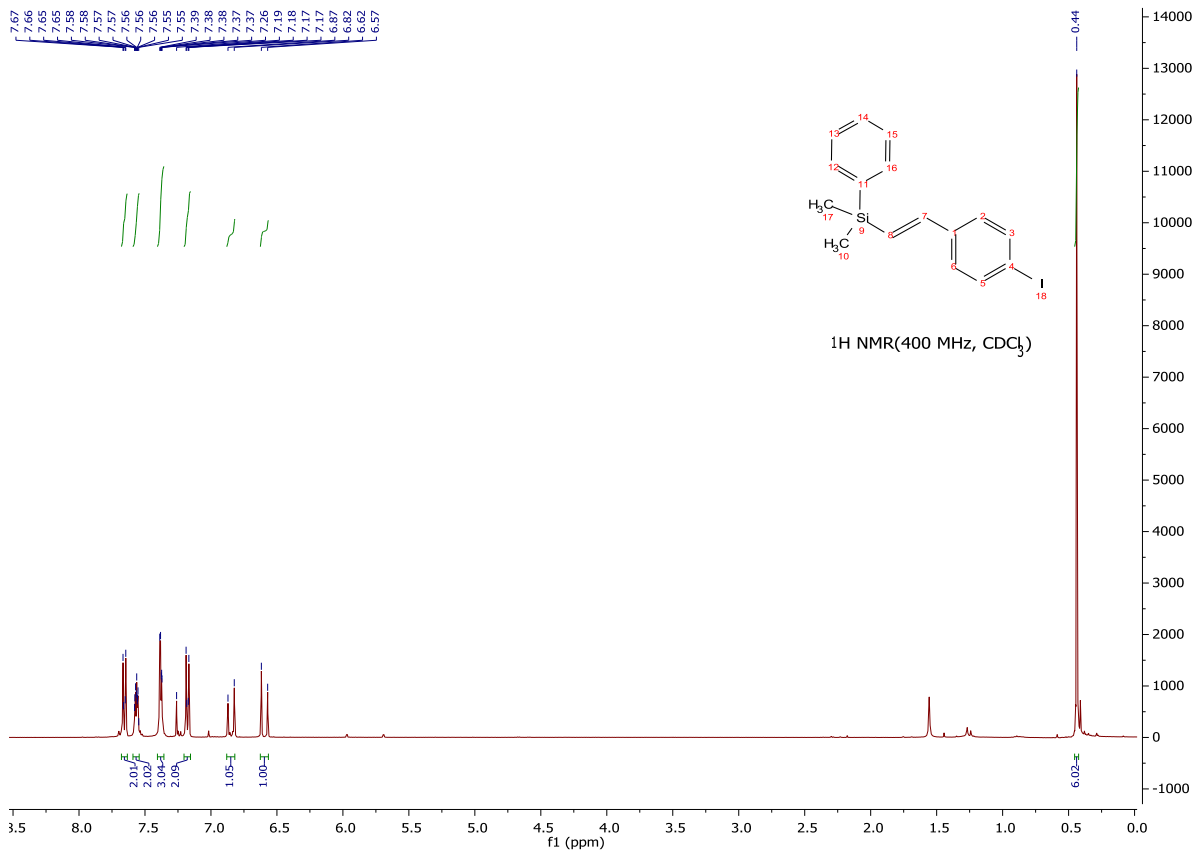




(32)



(33)





(35)

