



HAL
open science

Correction: Neighbourhood Characteristics and Long-Term Air Pollution Levels Modify the Association between the Short-Term Nitrogen Dioxide Concentrations and All-Cause Mortality in Paris

Séverine Deguen, Claire Petit, Angélique Delbarre, Wahida Kihal, Cindy Padilla, Tarik Benmarhnia, Annabelle Lapostolle, Pierre Chauvin, Denis Zmirou-Navier

► To cite this version:

Séverine Deguen, Claire Petit, Angélique Delbarre, Wahida Kihal, Cindy Padilla, et al.. Correction: Neighbourhood Characteristics and Long-Term Air Pollution Levels Modify the Association between the Short-Term Nitrogen Dioxide Concentrations and All-Cause Mortality in Paris. PLoS ONE, 2016, 11 (3), pp.e0150875. <10.1371/journal.pone.0150875>. <hal-01313745>

HAL Id: hal-01313745

<https://univ-rennes.hal.science/hal-01313745v1>

Submitted on 11 May 2016

HAL is a multi-disciplinary open access archive for the deposit and dissemination of scientific research documents, whether they are published or not. The documents may come from teaching and research institutions in France or abroad, or from public or private research centers.

L'archive ouverte pluridisciplinaire HAL, est destinée au dépôt et à la diffusion de documents scientifiques de niveau recherche, publiés ou non, émanant des établissements d'enseignement et de recherche français ou étrangers, des laboratoires publics ou privés.



Distributed under a Creative Commons CC BY 4.0 - Attribution - International License

CORRECTION

Correction: Neighbourhood Characteristics and Long-Term Air Pollution Levels Modify the Association between the Short-Term Nitrogen Dioxide Concentrations and All-Cause Mortality in Paris

Séverine Deguen, Claire Petit, Angélique Delbarre, Wahida Kihal, Cindy Padilla, Tarik Benmarhnia, Annabelle Lapostolle, Pierre Chauvin, Denis Zmirou-Navier

The images for Figs 1 and 2 are incorrectly switched. The image that appears as Fig 1 should be Fig 2, and the image that appears as Fig 2 should be Fig 1. Please see corrected Figs 1 and 2 here. The figure captions appear in the correct order.

There are errors in Fig 3. Please see the corrected Fig 3 here.

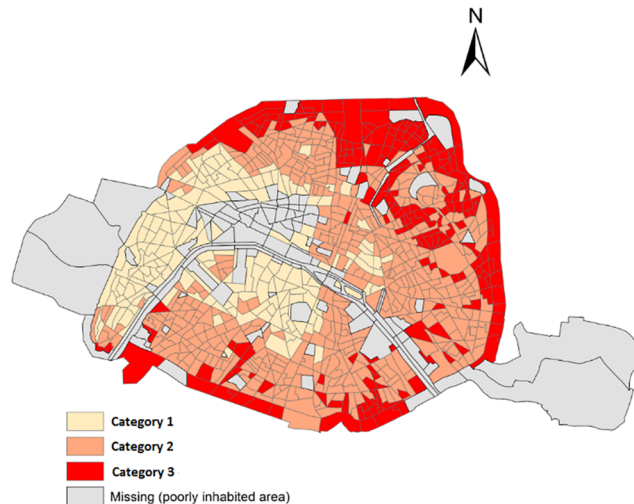


Fig 1. Socioeconomic categories in census block areas in Paris.

doi:10.1371/journal.pone.0150875.g001

OPEN ACCESS

Citation: Deguen S, Petit C, Delbarre A, Kihal W, Padilla C, Benmarhnia T, et al. (2016) Correction: Neighbourhood Characteristics and Long-Term Air Pollution Levels Modify the Association between the Short-Term Nitrogen Dioxide Concentrations and All-Cause Mortality in Paris. PLoS ONE 11(3): e0150875. doi:10.1371/journal.pone.0150875

Published: March 1, 2016

Copyright: © 2016 Deguen et al. This is an open access article distributed under the terms of the [Creative Commons Attribution License](https://creativecommons.org/licenses/by/4.0/), which permits unrestricted use, distribution, and reproduction in any medium, provided the original author and source are credited.

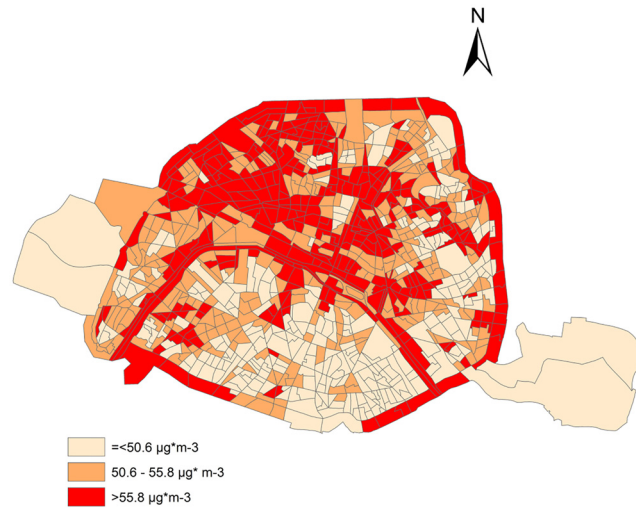
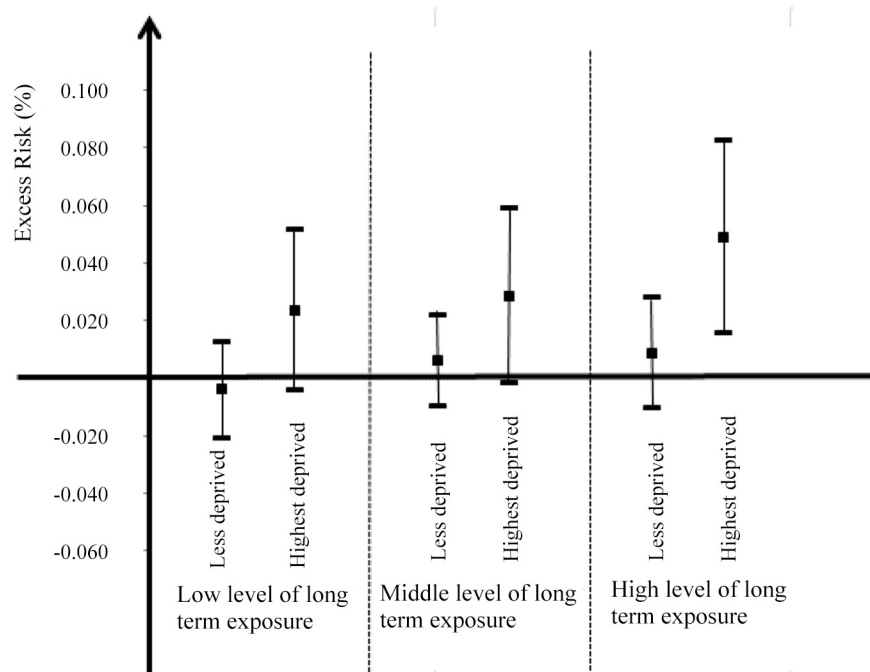


Fig 2. NO₂ concentrations from 2002 to 2009, in census block areas within Paris.

doi:10.1371/journal.pone.0150875.g002



* Highest deprived class groups the privileged and the middle deprived classes

Fig 3. Excess risk of mortality associated with a 10-µg/m³ short-term NO₂ increase and 95% confidence Interval, stratified by SES and long-term NO₂ concentrations- Paris, France, 2004–2009.

doi:10.1371/journal.pone.0150875.g003

Reference

1. Deguen S, Petit C, Delbarre A, Kihal W, Padilla C, Benmarhnia T, et al. (2015) Neighbourhood Characteristics and Long-Term Air Pollution Levels Modify the Association between the Short-Term Nitrogen Dioxide Concentrations and All-Cause Mortality in Paris. PLoS ONE 10(7): e0131463. doi: [10.1371/journal.pone.0131463](https://doi.org/10.1371/journal.pone.0131463) PMID: [26197409](https://pubmed.ncbi.nlm.nih.gov/26197409/)