

Figure Legend:

Example of estimation of the number of classes: (a) original image and (b) classification result (six classes).

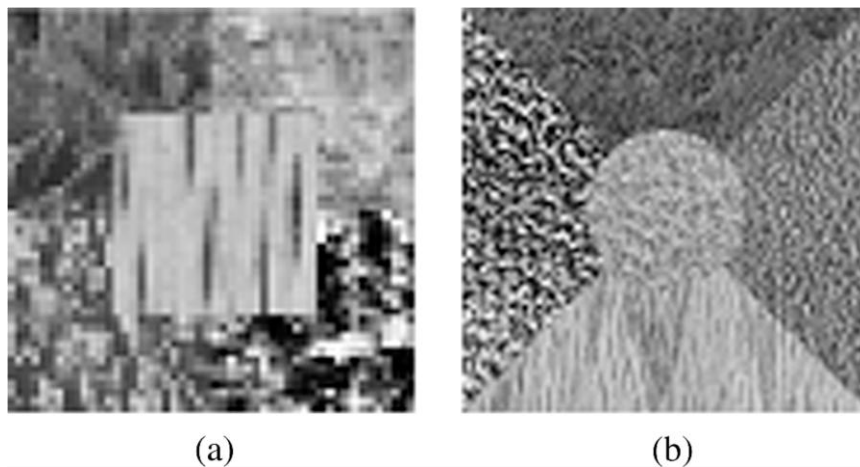


Figure Legend:

Examples of images used for performance comparison: (a) original image 1 and (b) original image 2.

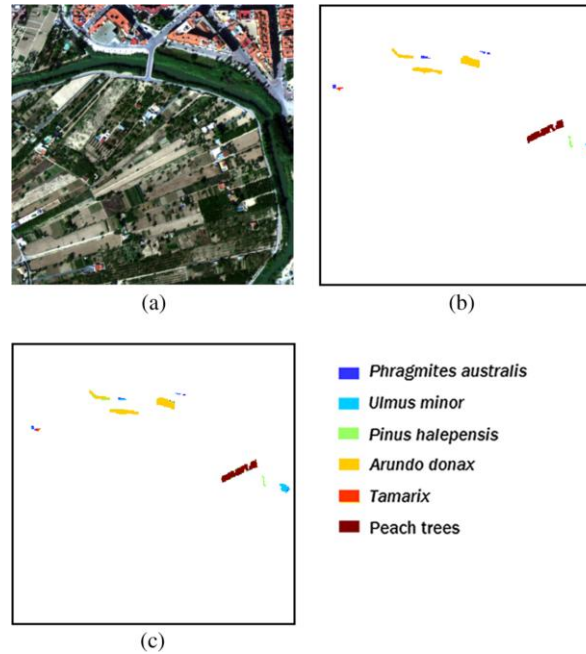


Figure Legend:

Identification results of invasive and noninvasive vegetation on the hyperspectral image using fuzzy C-means optimized (FCMO): (a) original image (three components over 62 for visualization), (b) ground truth (GT) areas, and (c) FCMO classification result.

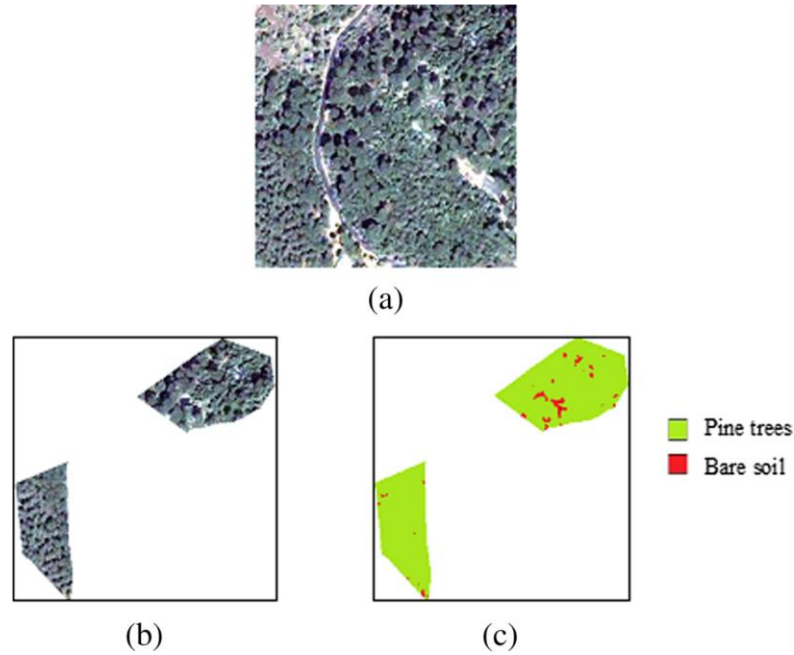


Figure Legend:

Example of pine trees detection result by FCMO: (a) original multicomponent image, (b) zones of GT identified as pine trees, and (c) FCMO detection result.