



**Cell-of-Origin (COO) Classification, BCL2 and MYC
Expression Associated Outcome in Younger Patients
Treated By RCHOP Front-Line Therapy Versus
Intensive Regimen Followed By Autologous Transplant
for De Novo Advanced Diffuse Large B Cell Lymphoma
(DLBCL) : Results of the French Prospective
Multicenter Randomized Trial Goelams-075**

Gaëlle Laboure, Marie-Cecile Parrens, Anjarasoa Tsaranazy, Magali Bordier,
Steven Le Gouill, Vincent Delwail, Rémy Gressin, Jerome Cornillon, Gandhi
Damaj, Charles Yves Foussard, et al.

HAL Id: hal-01290432

<https://univ-rennes.hal.science/hal-01290432>

Submitted on 24 May 2017

HAL is a multi-disciplinary open access archive for the deposit and dissemination of scientific research documents, whether they are published or not. The documents may come from teaching and research institutions in France or abroad, or from public or private research centers.

L'archive ouverte pluridisciplinaire **HAL**, est destinée au dépôt et à la diffusion de documents scientifiques de niveau recherche, publiés ou non, émanant des établissements d'enseignement et de recherche français ou étrangers, des laboratoires publics ou privés.

► **To cite this version:**

Gaëlle Laboure, Marie-Cecile Parrens, Anjarasoa Tsaranazy, Magali Bordier, Steven Le Gouill, et al.. Cell-of-Origin (COO) Classification, BCL2 and MYC Expression Associated Outcome in Younger Patients Treated By RCHOP Front-Line Therapy Versus Intensive Regimen Followed By Autologous Transplant for De Novo Advanced Diffuse Large B Cell Lymphoma (DLBCL) : Results of the French Prospective Multicenter Randomized Trial Goelams-075. 55th Annual Meeting and Exposition of the American-Society-of-Hematology, Dec 2013, La Nouvelle Orléans, United States. 126 (23), pp.3920, 2015. hal-01290432

Cell-of-Origin (COO) Classification, BCL2 and MYC Expression Associated-Outcome in Younger Patients Treated By RCHOP Front-Line Therapy Versus Intensive Regimen Followed By Autologous Transplant for De Novo Advanced Diffuse Large B Cell Lymphoma (DLBCL) : Results of the French Prospective Multicenter Randomized Trial *Goelams -075*

- Gaëlle Labouré, 1Hematology Department, CHU Bordeaux, Pessac, France
- Marie-Cécile Parrens [MD], 2Pathology Department, CHU Bordeaux, Pessac, France
- Anjarasoa Tsaranazy, 3Statistics Department, CHU Bordeaux, Pessac, France
- Magali Bordier, 2Pathology Department, CHU Bordeaux, Pessac, France
- Steven Le Gouill [MD PhD], 4Department of Hematology, Nantes University Hospital, Nantes, France
- Vincent Delwail [MD], 5Hematology Department, CHU Poitiers, Poitiers, France
- Remy Gressin [MD], 6Service d'hématologie clinique, CHU Grenoble, Grenoble, France
- Jérôme Cornillon [MD], 7Department of Hematology, Saint-Etienne University Hospital, Saint-Etienne, France
- Gandhi Damaj [MD PhD], 8Hematology Department, CHU Caen, Caen, France
- Charles Yves Foussard [MD], 9Hematology Department, CHU Angers, Angers, France
- Herve Maisonneuve [MD], 10Oncology and Hematology Department, CH, La Roche-sur-Yon, France
- Eric Deconinck [MD PhD], 11Department of Hematology, CHU Besancon, Besancon, France
- Guillaume Cartron [MD PhD], 12Department of Clinical Hematology, University Hospital of Montpellier, Montpellier, France
- Francois Dreyfus [MD], 13CHU Cochin, Hematology, Paris, France
- Emmanuel Gyan [MD PhD], 14Department of Clinical Hematology, CHRU de Tours, Tours, France
- Laurent Sutton [MD], 15Hematology Department, Argenteuil Hospital, Argenteuil, France
- Nadine Morineau [MD], 16Hematology Department, Centre Catherine de Sienne Nantes, Nantes, France
- Magda Alexis, 17Hematology Department, CHR Orleans, Orleans, France
- Anne Banos [MD], 18Hematology Department, CH Cote basque, Bayonne, France
- Diane Damotte [MD PhD], 19Pathology Department, CHU Cochin Paris, Paris, France
- Anne Moreau [MD], 20Department of Pathology, Nantes University Hospital, Nantes, France
- Françoise Kraeber-Bodéré [MD PhD], 21Nuclear Medicine Department, CHU Nantes, Nantes, France
- Delphine Rossille [PhD], 22CHU Rennes, Rennes, France
- Thierry Fest [MD PhD], 23INSERM U917 - CHU de Rennes, Rennes, France
- Thierry Lamy [MD PhD], 24Haematology, CHU Pontchaillou, Rennes, France
- Noel Milpied [MD PhD], 25CHU de Bordeaux, Bordeaux, France

Cell-Of-Origin (COO) classification, BCL2 and MYC expression associated-outcomes in younger patients treated by RCHOP versus intensive regimen followed by autologous transplant front-line therapy for de novo advanced Diffuse Large B Cell Lymphoma (DLBCL) : results of the french prospective multicenter randomized trial *GOELAMS-075*

Gaëlle Labouré, Marie-Cécile Parrens, M.D., Anjarasoa Tsaranazy, Steven Le Gouill, M.D., Ph.D., Vincent Delwail, M.D., Remy Gressin, M.D., Jérôme Cornillon, M.D., Gandhi Damaj, M.D., Ph.D., Charles Foussard, M.D., Hervé Maisonneuve, M.D., Eric Deconinck, M.D., Ph.D., Guillaume Cartron, M.D., Ph.D., François Dreyfus, M.D., Ph.D., Emmanuel Gyan, M.D., Ph.D., Laurent Sutton, M.D., Nadine Morineau, M.D., Magda Alexis, M.D., Anne Banos, M.D., Diane Damotte, M.D., Ph.D., Anne Moreau, M.D., Françoise Kraeber-Bodere, M.D., Ph. D., Delphine Rossille, Ph.D., Thierry Fest, M.D., Ph.D, Thierry Lamy, M.D., Ph.D., and Noel Milpied, M.D, Ph.D.

Background : The prognostic value of COO classification by immunohistochemistry (IHC) for de novo untreated advanced DLBCL remains controversial after Rituximab-based frontline therapy. Other biomarkers such as BCL2 or MYC protein expression have been proposed to predict survival. IHC characteristics were investigated in a large multicenter randomized study.

Methods : Three hundred twenty-three patients (pts) younger than 60 years with de novo untreated advanced DLBCL were randomized in the french prospective multicenter trial *GOELAMS-075* to receive either 8 courses of RCHOP14 (n=161) or 2 courses of RCEEP (Rituximab, Cyclophosphamide, Eldisine, Epirubicine, Prednisone) and 1 course of Rituximab-Methotrexate-Cytarabine (RMC) followed by intensive BEAM conditioning with autologous transplant (ASCT) (n=162) upon negative interim PET-CT (visual analysis). In case of positivity, salvage regimen followed by ASCT was applied. Three years Event-free-survival (3y-EFS) was the primary endpoint. Event was defined by interim PET-CT positivity, progression or relapse, or death from any cause. Central pathology review confirmed de novo DLBCL diagnosis for 300 pts (93%). COO determination using Hans algorithm, BCL2 protein expression (clone 124, Dako) and MYC protein expression (clone Y69, Abcam) were recorded. Cut-off values were 70% for BCL2, and 40% for MYC.

Results : COO analysis could be performed for 125/161 pts in RCHOP arm and 134/162 pts in intensive regimen arm including 36 and 34 Primary-Medastinal-B-Cell subtype (PMBL) respectively . Repartition of non-PMBL was: 33/89 (37%) Germinal-Center subtype (GC), 56/89 (63%) Non-Germinal-Center subtype (NGC) in R-CHOP arm; 48/100 (48%) GC, 52/100 (52%) NGC in intensive regimen arm. Of 70 PMBL there were 50 NGC, 4 GC and 16 NE equally distributed in both arms. Clinical characteristics were similar in both GC and NGC subtypes, whereas PMBL presented with more frequent bulky disease and predominantly female gender. BCL2 $\geq 70\%$ and MYC $\geq 40\%$ were

found in 147/285 (55%) and 85/185 (46%) of available samples, without difference between two arms. No correlation was found between BCL2 or MYC protein expression and GC or NGC subtype, however there were seen in a significantly lower proportion of PMBL (34% and 17% respectively). Coexpression of BCL2 \geq 70% and MYC \geq 40% (MYC+/BCL2+) occurred in 52/184 (28%) cases, without difference between two arms or COO subtypes. By contrast, PMBL subtype displayed an extremely low rate of MYC+/BCL2+ cases (1/49, 2%).

3y-EFS rates were 52% \pm 6% for GC, 58% \pm 5% for NGC and 49% \pm 6% for PMBL (p= 0,42) with no significant difference according to treatment arm. Of note, in PMBL, the majority of events was positive interim PET-CT. Worse EFS was seen in BCL2 \geq 70% cases (3y-EFS : 47% \pm 4% vs 60% \pm 4%, p= 0,05) but this difference was erased in RCHOP arm (3y-EFS : 52% \pm 6% vs 58% \pm 6%).

3y-Progression Free Survival (PFS) rates were 73% \pm 6% for GC, 76% \pm 6% for NGC and 94% \pm 4% for PMBL (p=0,03) with no difference between the two arms (**Fig 1**). There was no PFS difference in BCL2 \geq 70% vs <70% cases (3y-PFS : 71% \pm 4% vs 82% \pm 4%, p= 0,11). EFS and PFS rates were similar between MYC \geq 40% and <40% cases (3y-EFS : 56% vs 59% ; 3y-PFS : 78% vs 84%) without further advantage of one arm compared to another. Same results were obtained for MYC+/BCL2+ vs non MYC+/BCL2+ cases (3y-EFS : 53% vs 58% ; 3y-PFS : 78% vs 81%).

After a median follow-up of 71 months, PMBL was associated with significant better overall survival (OS) whereas no difference was observed between GC and NGC subtypes (5y-OS : 96% vs 75% and 78% respectively, p= 0,002) (**Fig 2**). OS rates were similar for BCL2 positive and BCL2 negative cases after exclusion of PMBL (5y-OS: 75% vs 78%, p=0,65). There was no significant impact of IHC MYC positivity (5y-OS : 80% vs 86% for MYC negative cases, p=0,29) or MYC+/BCL2+ coexpression (5y-OS : 80% vs 85% for negative cases, p=0,50) on outcome. There was no significant impact of treatment on OS of MYC and/or BCL2 positive cases.

Conclusion: In younger patients, outcome of IHC defined GC and NGC subtype of non-PMBL DLBCL was not different following R-CHOP14 or intensive treatment including ASCT. Similarly, regardless of treatment arm, BCL2 or MYC or both overexpression did not impair significantly the prognosis. IHC defined COO or BCL2/MYC overexpression could not identify DLBCL in need of intensive therapy with ASCT. Finally the good prognosis of PMBL subtype with excellent PFS and OS was confirmed.

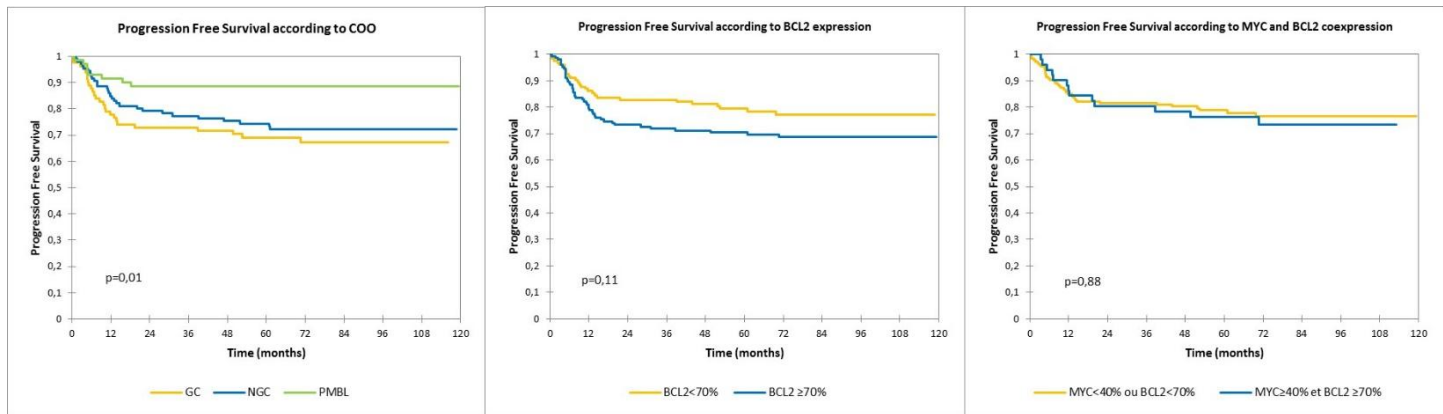


Figure 1 : Progression Free Survival according to COO subtype, BCL2 expression and MYC-BCL2 coexpression

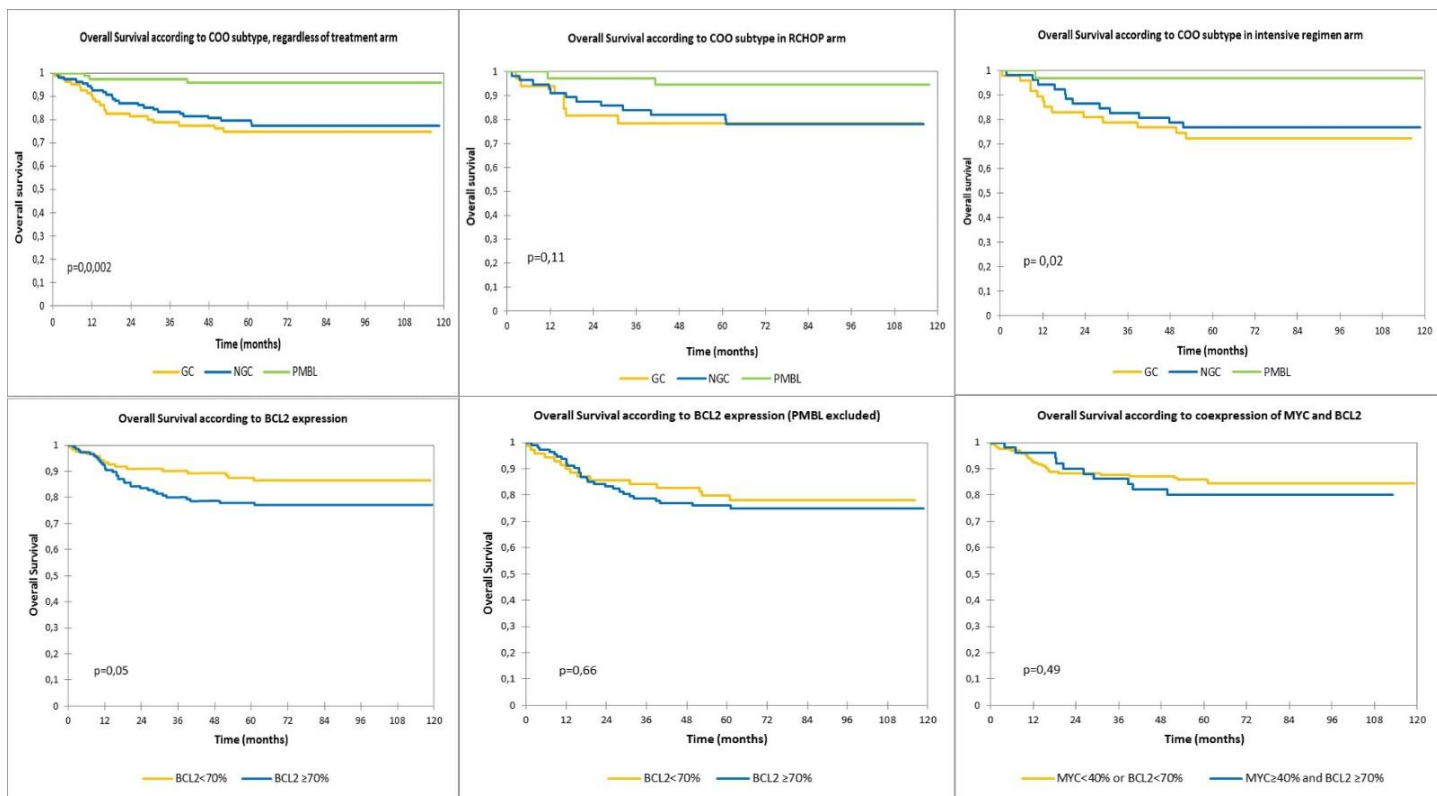


Figure 2 : Overall Survival according to COO subtype, BCL2 expression and MYC-BCL2 coexpression