



## Validation of the Meaf Score and Comparaison with Early Allograft Dysfunction Criteria on Predicting 3 Months Graft Survival

M. Rayar, G. B. Levi Sandri, C. Cusumano, N. Lombard, M. Lakehal, V. Desfourneaux, B. Meunier, L. Sulpice, K. Boudjema

### ► To cite this version:

M. Rayar, G. B. Levi Sandri, C. Cusumano, N. Lombard, M. Lakehal, et al.. Validation of the Meaf Score and Comparaison with Early Allograft Dysfunction Criteria on Predicting 3 Months Graft Survival. *Liver Transplantation*, 2016, 22 (6), pp.859-860. 10.1002/lt.24405 . hal-01269902

**HAL Id: hal-01269902**

**<https://univ-rennes.hal.science/hal-01269902>**

Submitted on 11 Feb 2016

**HAL** is a multi-disciplinary open access archive for the deposit and dissemination of scientific research documents, whether they are published or not. The documents may come from teaching and research institutions in France or abroad, or from public or private research centers.

L'archive ouverte pluridisciplinaire **HAL**, est destinée au dépôt et à la diffusion de documents scientifiques de niveau recherche, publiés ou non, émanant des établissements d'enseignement et de recherche français ou étrangers, des laboratoires publics ou privés.

# Accepted Article

## VALIDATION OF THE MEAF SCORE AND COMPARAISON WITH EARLY ALLOGRAFT DYSFUNCTION CRITERA ON PREDICTING 3 MONTHS GRAFT SURVIVAL

M.Rayar<sup>1,2,3</sup> MD, GB Levi Sandri<sup>1</sup> MD, C. Cusumano<sup>1</sup> MD, N.lombard<sup>1</sup> MD,  
M.Lakehal<sup>1</sup> MD V.Desfourneaux<sup>1</sup> MD, B.Meunier<sup>1,3</sup> MD PhD, L.Sulpice<sup>1,3</sup> MD PhD,  
K.Boudjema<sup>1,3</sup> MD PhD

<sup>1</sup> CHU Rennes, Service de Chirurgie Hépatobiliaire et Digestive, F35033 Rennes, France

<sup>2</sup> INSERM, U1414, Centre d'investigation Clinique, F-35033 Rennes, France

<sup>3</sup> Université Rennes1, Faculté de médecine, F35043 Rennes, France

Corresponding author:

Michel Rayar, MD

Department of HepatoBiliary and Digestive Surgery, CHU de Rennes, Rennes, France

email: [michel.rayar@chu5rennes.fr](mailto:michel.rayar@chu5rennes.fr)

Dear Sir,

We read with great interest the study of Pareja et al. (1) entitled: "A score model for the continuous grading of early allograft dysfunction severity", reporting a new score characterizing severity of early allograft dysfunction (EAD) so called the MEAF (model of early allograft function) score. This interesting score, which is calculated from bilirubin, INR and alanine aminotransferase levels observed within the 3 first post operative day (POD), is a continuous score grading from 0 to 10 reflecting the graft function, while most of previous score including the definition of EAD reported by Olthoff and al. (2), are only binary. In order to validate the proposed model we calculated the MEAF score in our population according to the reported formula. Between 2002 and 2014, 1297 liver transplantation were performed in our center with a median follow up of 41.4 months. Thirty two (2.5%) patients were retransplanted or died within the 2 first POD and were therefore excluded from the analysis. Of the 1265 remaining patients, the MEAF score could be calculated in 785 (62%) cases.

Median MEAF score value was 4.6 and a significant correlation with graft survival was observed (figure 1a). Notwithstanding, the capacity of a MEAF score  $\geq 8$  to predict 35months graft survival was inferior to presence of EAD (as reported by Olthoff et al.) as shown by ROC curve (figure 1.b).

Therefore, our data support the effectiveness of the MEAF score as a grading system of the severity of graft dysfunction. However, it is our opinion that this score has some limitations. First, it can't be calculated in case of graft or patient death within the 2 first POD. This major limitation, prevent comparison or analysis of liver transplantation efficiency between subgroup or population as most of patient with primary non function, requiring early retransplantation, were excluded. We suggest that patients in whom the MEAF score could not be calculated due to retransplantation or patient's death, should be attributed by default the maximum score (i.e. 10). Moreover, its formula required a calculator and therefore limits its utility in clinical practice. A more simple method of calculation, which could be easily used by physician, may be useful.

## References:

15 Pareja E, Cortes M, Hervás D, Mir J, Valdivieso A, Castell JV, Lahoz A. A score model for the continuous grading of early allograft dysfunction severity. Liver Transpl. 2015 Jan;21(1):385-46. doi: 10.1002/lt.23990.

25 Olthoff KM, Kulik L, Samstein B, Kaminski M, Abecassis M, Emond J, et al. Validation of a current definition of early allograft dysfunction in liver transplant recipients and analysis of risk factors. Liver Transpl 2010;16:943-949.

## Figure legends:

**Figure 1 A-** Graft survival according to MEAF score stratification. p value <0.001.

**B-** Comparison of three months graft survival prediction with MEAF and EAD by ROC curve

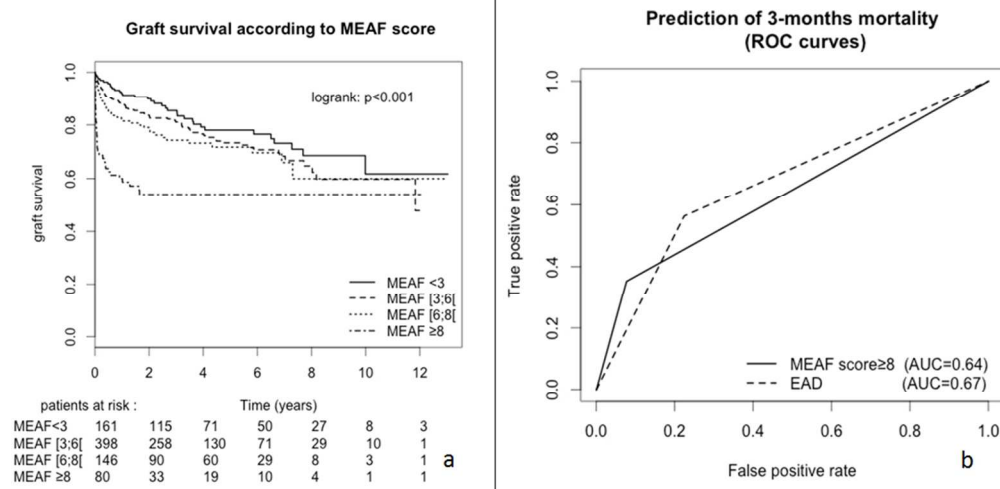


Figure 1 A- Graft survival according to MEAF score stratification.  $p$  value  $< 0.001$ .  
B- Comparison of three-months graft survival prediction with MEAF and EAD by ROC curve

275x135mm (96 x 96 DPI)