



HAL
open science

Investigations in the ternary praseodymium–boron–carbon system: Solid-state phase diagram and structural chemistry

Volodymyr Babizhetskyy, Arndt Simon, Jean-François Halet

► **To cite this version:**

Volodymyr Babizhetskyy, Arndt Simon, Jean-François Halet. Investigations in the ternary praseodymium–boron–carbon system: Solid-state phase diagram and structural chemistry. *Solid State Sciences*, 2015, Special Issue: International Symposium on Boron, Borides and Related Materials, ISBB 2014, Honolulu, Hawaii, 47, pp.73–77. 10.1016/j.solidstatesciences.2014.12.008 . hal-01220892

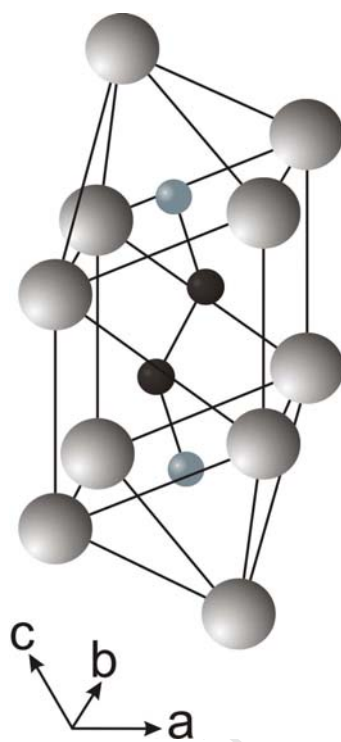
HAL Id: hal-01220892

<https://univ-rennes.hal.science/hal-01220892>

Submitted on 28 Oct 2015

HAL is a multi-disciplinary open access archive for the deposit and dissemination of scientific research documents, whether they are published or not. The documents may come from teaching and research institutions in France or abroad, or from public or private research centers.

L'archive ouverte pluridisciplinaire **HAL**, est destinée au dépôt et à la diffusion de documents scientifiques de niveau recherche, publiés ou non, émanant des établissements d'enseignement et de recherche français ou étrangers, des laboratoires publics ou privés.



ACCEPTED MANUSCRIPT

Investigations in the ternary praseodymium - boron – carbon system: Solid-state phase diagram and structural chemistry

Volodymyr Babizhetskyy^{a,b,*}, Arndt Simon^a, and Jean-François Halet^{c,*}

^a*Max-Planck-Institut für Festkörperforschung, Heisenbergstrasse 1, Postfach 800665, D-70569 Stuttgart, Germany*

^b*Department of Inorganic Chemistry, Ivan Franko National University of Lviv, Kyryla & Mefodiya Str. 6, UA-79005 Lviv, Ukraine*

^c*Institut des Sciences Chimiques de Rennes, UMR 6226 CNRS - Université de Rennes 1, Avenue du Général Leclerc, F-35042 Rennes, France*

Abstract

The solid-state phase equilibrium in the Pr-B-C system was established using X-ray diffraction, scanning electron microscopy and electron probe microanalysis. The region up to 60 at. % of Pr was studied at 1270 K, whereas the Pr-rich corner, due to the generally lower melting points, was investigated at 1070 K. Eleven ternary compounds were isolated. The existence of PrB₂C₂, Pr₅B₂C₅, Pr₃B₄C₅, Pr₅B₂C₆, PrBC, and Pr₁₀B₉C₁₂ was confirmed. Pr₁₅B₆C₂₀ and Pr₂₅B₁₄C₂₆ have been found only in arc-melted alloys. Three new ternary compounds were isolated, namely Pr₂BC, ~Pr₄B₃C₁₃ and ~Pr₇B₉C₃₄. The monoclinic structure of Pr₂BC was solved from X-ray single crystal data: space group *C2/m* ($a = 13.088(1)$ Å, $b = 3.6748(8)$ Å, $c = 9.488(1)$ Å, $\beta = 131.03(1)^\circ$, $R1 = 0.035$ ($wR2 = 0.086$) for 585 reflections with $I_o > 2\sigma(I_o)$). Additionally, the phase of Pr₅B₂C₆ was analyzed showing a broad homogeneity range described by the formula Pr₅(BC)_x ($7.5 \leq x \leq 9.3$).

Keywords: Boride • Borocarbide • Carbide • Crystal structure • Phase diagram • Praseodymium

* Corresponding authors

E-mail addresses: v.babizhetskyy@googlemail.com (V.B.) and halet@univ-rennes1 (J.-F. H.)

1. Introduction

The solid-state chemistry of the ternary rare-earth metal (*RE*) boride carbides $RE_xB_yC_z$ encompasses a variety of different structural arrangements with boron-carbon substructures ranging from zero-dimensional (0-D) units isolated from each other in a matrix formed from the metal atoms to one- and two-dimensional (2-D) networks alternating with metal sub-lattices, which are closely related to the *valence electron count* (VEC) per light atoms [1-4]. Indeed, nearly a dozen of different structural types have been reported so far solely for the most electron-rich compounds, i.e., those containing finite quasi-molecular entities and having a large VEC [1-4]. These finite chains embedded in voids of the metal atom matrix can have different lengths ranging from 2 to 13 non-metal atoms up to now, and chains of different sizes as well as isolated C atoms can coexist [5-21]. These compounds were revealed from partial or complete investigations of ternary *RE*-B-C phase diagrams earlier established for most of the rare earth metal elements ($RE = \text{Sc, Y, La, Eu, Gd, Ho}$) [22-27]. Novel representatives were recently discovered during our new investigations of the La-B-C [24], Pr-B-C and Nd-B-C systems [20, 21]. Our latest studies of the isothermal sections of the ternary Pr-B-C phase diagram at 1270 K (concentration range 0–60 at.% Pr) and 1070 K (> 60 at.% Pr), crystallographic data of all the ternary compounds and the structure determinations of the new ternary compound Pr_2BC and the composition of the solid solution of the phase $\text{Pr}_5\text{B}_2\text{C}_6$ are the subject of this work.

2. Experimental

2.1. Synthesis and analysis

Polycrystalline samples were prepared from commercially available pure elements: praseodymium with a claimed purity of 99.99 at%, Alfa – Aesar, Johnson Matthey Company, sublimed bulk pieces; crystalline boron powder, purity 99.99 at%, H. C. Starck, Germany; graphite powder, purity 99.98 at%, Aldrich. Before use, the graphite and boron powders were

out-gased overnight at 1220 K, $p < 10^{-5}$ mbar. Praseodymium ingots were filed to coarse powders with beryllium bronze files (Dönges GmbH, Germany). Stoichiometric mixtures of the constituents were compacted in stainless steel dies. The pellets were arc-melted under purified argon atmosphere [28] on a water-cooled copper hearth. The alloy buttons of 1g were turned over and remelted three times to improve homogeneity. The samples were then wrapped in molybdenum foil and annealed in silica tubes under argon for one month at 1270 K (concentration range 0–60 at.% Pr) or 1070 K (> 60 at.% Pr). Subsequent heating for some samples just above the melting point was carried out in a high-frequency furnace (TIG-10/300, Hüttinger, FRG) under argon atmosphere for several hours at different temperatures. Finally, the samples were also annealed in evacuated silica tubes for one month by procedure described above and subsequently quenched in cold water. Sample handling was carried out under argon atmosphere in a glove box ($P_{\text{H}_2\text{O}} < 0.1$ ppm) or through the Schlenk technique.

2.2. X-ray diffraction and structure refinement

X-ray powder diffraction patterns were obtained on a powder diffractometer STOE STADI P with Mo $K_{\alpha 1}$ radiation, using capillaries sealed under dried argon to avoid hydrolysis. The unit cell parameters for the investigated compounds $\text{Pr}_x\text{B}_y\text{C}_z$, as well as the Rietveld refinements for some samples containing the $\sim\text{Pr}_5\text{B}_2\text{C}_6$ phase were performed with the help of the CSD programs package [29]. The results are given in Table 1.

Small irregularly shaped single crystals were selected from the crushed sample of Pr_2BC and sealed under argon atmosphere in glass capillaries. These crystals were first examined by the Buerger precession technique in order to establish their suitability for the subsequent data collection. Single crystal diffraction data of Pr_2BC were collected at room temperature on a

STOE IPDS II image plate diffractometer with monochromatized Mo K_{α} radiation. All relevant crystallographic data are listed in Table 2. The starting atomic parameters were derived

Table 1

Crystallographic data of ternary compounds in the Pr-B-C system.

Compound	Space group	Structure type	Unit cell parameters (Å)		
			<i>a</i>	<i>b</i>	<i>c</i>
1. Pr ₂ BC	<i>C2/m</i>	Nd ₂ BC	13.073(1)	3.669(1) $\beta=131.01(1)$	9.486(1)
2. Pr ₅ B ₂ C ₅	<i>P4/ncc</i>	Gd ₅ B ₂ C ₅	8.448(1)		10.970(2)
3. Pr ₅ (BC) _{<i>x</i>} (7.5 ≤ <i>x</i> ≤ 9.3)	<i>P4/ncc</i>	La ₅ B ₂ C ₆	8.407(2)- 8.403(1)		11.969(4)- 12.637(5)
4. Pr ₅ B ₄ C _{5-<i>x</i>} (<i>x</i> = 0.15)	<i>Pna2₁</i>	Ce ₅ B ₄ C ₅	24.592(2)	8.4563(5)	8.4918(5)
5. PrBC	<i>P2₁2₁2₁</i>	LaBC	8.4478(5)	8.4719(8)	12.325(1)
6. Pr ₁₀ B ₉ C ₁₂	<i>P4₁2₁2</i>	Ce ₁₀ B ₉ C ₁₂	8.4365(3)		25.468(1)
7. Pr ₁₅ B ₆ C ₂₀	<i>P-1</i>	Nd ₁₅ B ₆ C ₁₈	8.3431(8)	8.3581(8)	9.2492(9)
			$\alpha=84.82(1)$	$\beta=84.23(1)$	$\gamma=89.68(1)$
8. Pr ₂₅ B ₁₄ C ₂₆	<i>P2₁/n</i>	Nd ₂₅ B ₁₂ C ₂₈	8.4243(5)	8.4095(6)	30.828(1)
				$\beta=108.879(4)$	
9. PrB ₂ C ₂	<i>P4/mbm</i>	LaB ₂ C ₂	5.38486(4)		3.8148(6)
10. ~Pr ₄ B ₃ C ₁₃	---	---	---	---	---
11. ~Pr ₇ B ₉ C ₃₄	---	---	---	---	---

via direct methods using the program SIR97 [30]. They were subsequently refined with the program SHELX-97 [31] within the WinGX program package [32] (full matrix least-squares on F^2) with anisotropic atomic displacement factors for all atoms. No additional reflections with regard to the Nd₂BC type unit cell were detected. The atomic coordinates and displacement parameters are listed in Table 3.

2.3. Microprobe analysis

For metallographic investigation and electron probe microanalysis (EPMA) some alloys were embedded in Woods metal (Fluka Chemie, Switzerland) with a melting point of ca. 75 °C. The samples were polished on a nylon cloth using chromium oxide (Bühler Isomet) suspended in

Table 2Crystal data and structure refinement for Pr₂BC.

Empirical formula	Pr ₂ BC
Crystal system:	Monoclinic
Space group:	<i>C2/m</i>
Pearson symbol	mC16
Formula per unit cell, <i>Z</i>	4
Lattice parameters	
<i>a</i> / Å	13.088(1)
<i>b</i> / Å	3.6748(8)
<i>c</i> / Å	9.488(1)
β°	131.03(1)
Unit cell volume / Å ³	344.2(1)
Calculated density / (g/cm ³)	6.174
Absorption coefficient / (1/cm)	27.694
Crystal size / mm ³	0.070 x 0.035 x 0.015
Radiation and wavelength / Å	Mo <i>K</i> α , 0.71069
Diffractionmeter	STOE IPDS II
Refined parameters	26
Refinement	<i>F</i> ²
$2\theta_{\max}$ and $(\sin\theta/\lambda)_{\max}$	63.4, 0.739
<i>h, k, l</i>	-17 < <i>h</i> < 17 -5 < <i>k</i> < 5 -12 < <i>l</i> < 12
Collected reflections	3779
Independent reflections	620 (<i>R</i> _{int} = 0.098)
Reflections with <i>I</i> _o > 2σ(<i>I</i> _o)	585 (<i>R</i> _σ = 0.045)
Final <i>R</i> ₁ ^{<i>a</i>} indices (<i>R</i> ₁ ^{<i>a</i>} all data)	0.035 (0.049)
Weighted <i>wR</i> ₂ ^{<i>b</i>} factor (<i>wR</i> ₂ ^{<i>b</i>} all data)	0.086 (0.098)
Goodness-of-fit on <i>F</i> ² :	1.2
Extinction coefficient	0.0028(6)
Largest diff.peak and hole / (e/Å ⁻³)	-2.47/1.32
Structure solution programs	SIR97 [30], SHELXL97 [31]

$$^a R_1(F) = [\sum(|F_o| - |F_c|)] / \sum|F_o|$$

$$^b wR_2(F^2) = [\sum[w(F_o^2 - F_c^2)^2] / \sum[w(F_o^2)^2]]^{1/2}$$

$$[w^{-1} = \sigma^2(F_o)^2 + (0.032P)^2 + 5.85P], \text{ where } P = (F_o^2 + 2F_c^2) / 3$$

Table 3Atomic coordinates and displacement parameters^a (in Å²) for Pr₂BC.

Atom	Site	<i>x</i>	<i>y</i>	<i>z</i>	<i>U</i> _{eq}	<i>U</i> ₁₁	<i>U</i> ₂₂	<i>U</i> ₃₃	<i>U</i> ₁₃
Pr1	4i	0.79734(6)	0	0.38294(7)	0.0121(6)	0.0186(3)	0.0131(3)	0.0076(3)	0.0063(3)
Pr2	4i	0.43493(5)	0	0.14039(8)	0.0157(3)	0.0223(4)	0.0129(3)	0.0100(3)	0.0056(3)
C	4i	0.875(1)	0	0.698(1)	0.021(5)	0.022(5)	0.014(4)	0.007(4)	0.006(3)
B	4i	0.577(1)	1/2	0.107(2)	0.029(5)	0.018(5)	0.011(4)	0.011(4)	0.012(4)

$$^a U_{23} = U_{12} = 0$$

dry petroleum with grain sizes 1-5 μm . Qualitative and quantitative composition analyses of the samples were performed by energy dispersive X-ray spectroscopy (EDX) and wavelength dispersive X-ray spectroscopy (WDX) on a scanning electron microscope TESCAN 5130 MM with an Oxford Si-detector and with an Oxford INCA WAVE 700 detector. PrB_2C_2 standard was used to deduce the compositions of the new compounds. The boron and praseodymium contents were investigated in the alloys. For the chemical microprobe, the polishing procedure had to be performed or repeated just before the measurements and the surface of the samples was protected by dry petroleum. Metallographic and EPMA analyses of the Pr-B-C ternary system reveal the compound PrB_2C_2 [33] to be in phase equilibrium with $\text{Pr}_{10}\text{B}_9\text{C}_{12}$ [17] and $\text{Pr}_5\text{B}_{2.6}\text{C}_{6.7}$ ($\text{La}_5\text{B}_2\text{C}_6$ structure type) [5, 14] and PrB_4 [34] at 1270 K. $\text{Pr}_5\text{B}_2\text{C}_5$ [16] is in phase equilibrium with $\text{Pr}_5\text{B}_{1.7}\text{C}_{5.8}$ and $\text{Pr}_5\text{B}_4\text{C}_5$ [18]. The results of the EPMA for $\text{Pr}_5(\text{BC})_x$ ($7.5 \leq x \leq 9.3$) are listed in Table 4.

Table 4

Results of EPMA investigation for alloys* $\text{Pr}_5(\text{BC})_x$ ($7.5 \leq x \leq 9.3$).

Composition	Lattice parameters (a, c in \AA)	c/a	V (\AA^3)	B, at %
$\text{Pr}_5\text{B}_{1.7}\text{C}_{5.8}$ ^a	8.407(2) 11.969(4)	1.423	845.9(7)	14(1)
$\text{Pr}_5\text{B}_{2.3}\text{C}_{6.5}$ ^b	8.405(1) 12.498(4)	1.487	882.9(5)	17(1)
$\text{Pr}_5\text{B}_{2.6}\text{C}_{6.7}$ ^c	8.403(1) 12.637(8)	1.503	891.6(8)	18(1)

*Phase equilibrium in alloys is also confirmed by X-ray powder investigations:

^a $\text{Pr}_5\text{B}_{1.7}\text{C}_{5.8} + \text{Pr}_5\text{B}_2\text{C}_5$, ^b $\text{Pr}_5\text{B}_{2.3}\text{C}_{6.5} + \text{Pr}_{10}\text{B}_9\text{C}_{12}$, ^c $\text{PrB}_2\text{C}_2 + \text{Pr}_5\text{B}_{2.6}\text{C}_{6.7} + \text{PrC}_2$

3. Results and discussion

3.1. Phase equilibria in the Pr-B-C ternary system

The isothermal section of the Pr-B-C phase diagram at 1270 K and 1070 K is shown in Fig. 1. According to the phase diagram of the boundaries the Pr-B system contains three binary

boride compounds, i.e., Pr_2B_5 [35] and PrB_4 [34] which are formed by peritectic reactions at ~ 2250 and 2620 K, respectively, and PrB_6 [36] which melts congruently at 2880 K and exhibits a narrow range of homogeneity [37]. The data of binary phase diagram of the Pr–C system was recently assessed [38]. A small range of homogeneity of Pr_2C_3 was confirmed [39]. No extension into the ternary domain has been detected for the binary compound “ B_4C ” [40–42]. The phase boundary of the Pr-rich liquid was not defined within the ternary system and two annealing temperatures were chosen for achievement of the phase equilibria in the solid state. In addition, the micrograph analysis was unsuccessful because of high sensitivity of some samples against moisture.

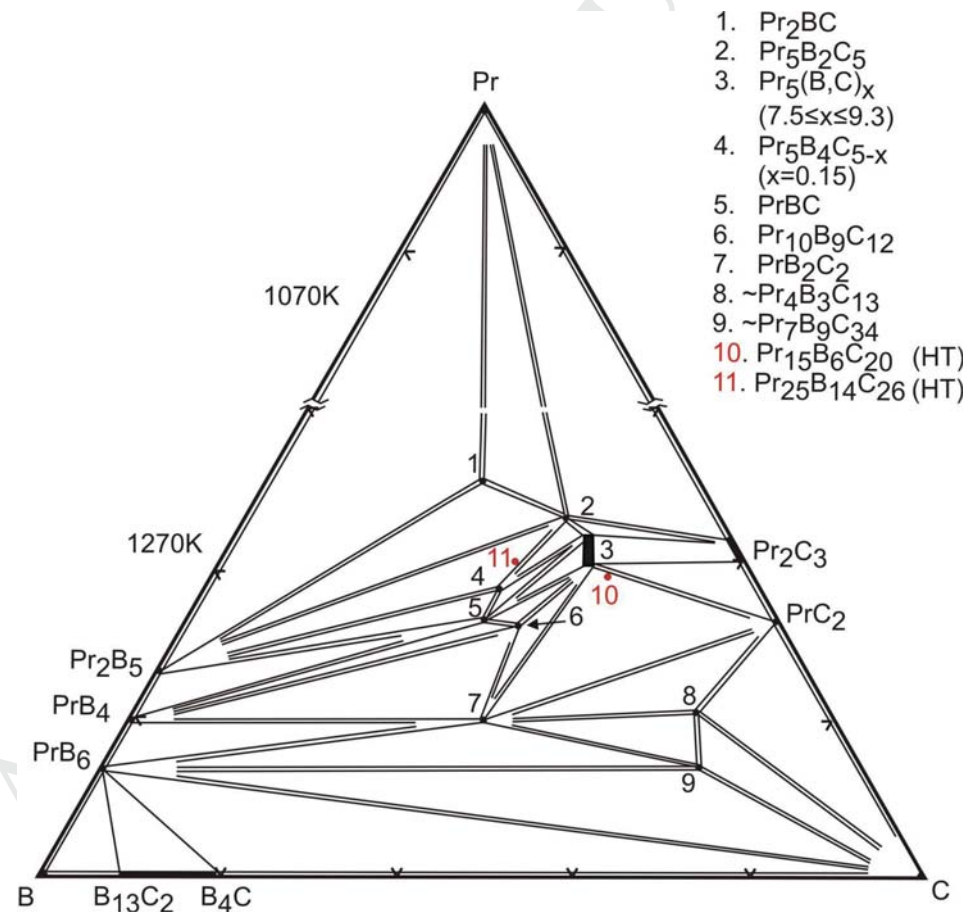
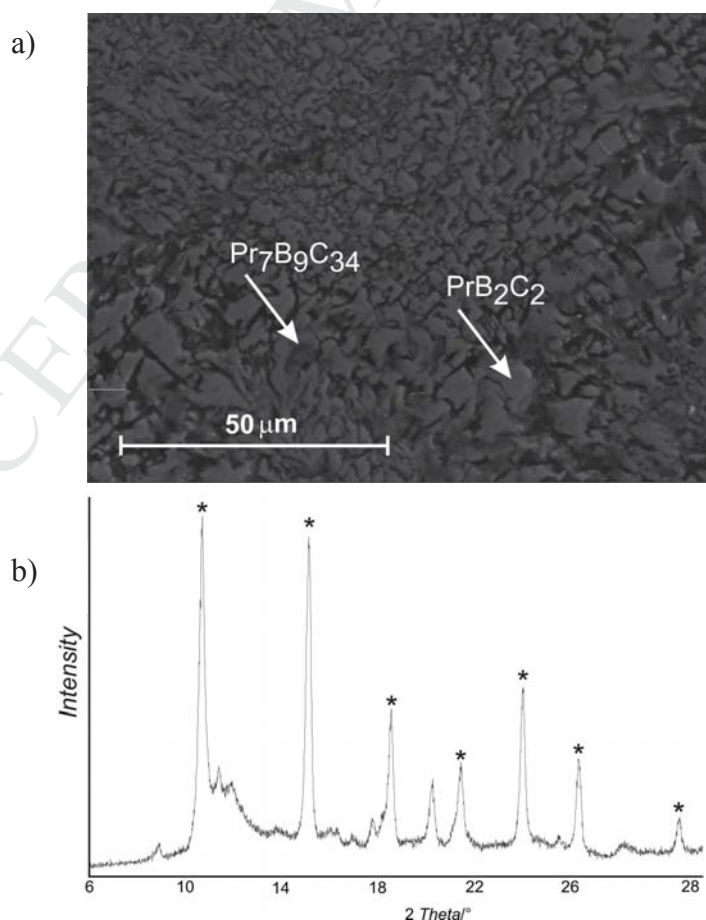


Fig. 1. Isothermal section of the Pr–B–C phase diagram at 1270 K and 1070 K ($\text{Pr}_{15}\text{B}_6\text{C}_{20}$ and $\text{Pr}_{25}\text{B}_{14}\text{C}_{26}$ are observed in arc-cast samples).

Metallographic investigation, X-ray powder diffraction and EPMA analyses revealed the new compound $\sim\text{Pr}_7\text{B}_9\text{C}_{34}$ to be in equilibrium with PrB_6 and $\text{Pr}_5\text{B}_2\text{C}_2$ (see Fig. 2 a and b). Fig. 2 c and d shows the three-phase region of the Pr-B-C ternary system between PrB_2C_2 , $\text{Pr}_5\text{B}_{2.6}\text{C}_{6.7}$ and $\text{Pr}_{10}\text{B}_9\text{C}_{12}$ confirmed by refinement of the X-ray powder diffraction data and EPMA analyses.

The crystallographic characteristics of the ternaries in the Pr-B-C system are listed in Table 1. It is worth noting that the phases $\text{Pr}_{15}\text{B}_6\text{C}_{18}$ and $\text{Pr}_{25}\text{B}_{14}\text{C}_{26}$ were found only in arc-melted alloys. After annealing the samples of the $\text{Pr}_{15}\text{B}_6\text{C}_{20}$ [19] phase at 1270 K, three phases were found in phase equilibrium: $\text{Pr}_5\text{B}_2\text{C}_6$ [14], PrB_2C_2 [33] and PrC_2 [43]. After annealing, the phase $\text{Pr}_{25}\text{B}_{14}\text{C}_{26}$ also had vanished and only $\text{Pr}_5\text{B}_2\text{C}_5$ [16] and $\text{Pr}_5\text{B}_4\text{C}_5$ [18] were detected. Finally, three new ternary compounds have been isolated in this system: Pr_2BC , $\sim\text{Pr}_4\text{B}_3\text{C}_{13}$ and $\sim\text{Pr}_7\text{B}_9\text{C}_{34}$ characterized both by EPMA and XRD analysis (see Fig. 1).



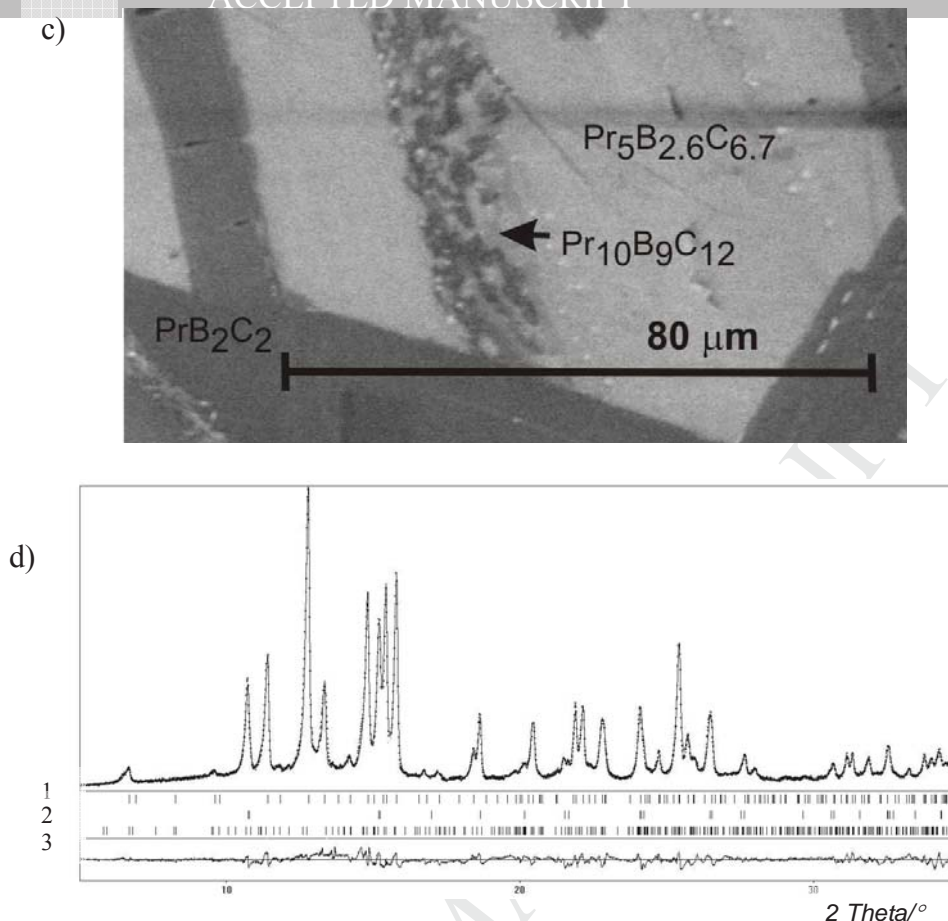


Fig. 2. Secondary electron image (a) and X-ray powder pattern (b) of the annealed bulk sample with nominal atomic composition $\text{Pr/B/C} = 15/25/60$. Indicated (*) reflections are from PrB_2C_2 and other reflections are from $\sim\text{Pr}_7\text{B}_9\text{C}_{34}$. Backscattered electron image (c) and X-ray powder pattern (d) with observed and calculated profiles for $\text{Pr}_5\text{B}_{2.6}\text{C}_{6.7}$ (1), PrB_2C_2 (2), $\text{Pr}_{10}\text{B}_9\text{C}_{12}$ (3) of the annealed bulk sample with nominal atomic composition $\text{Pr/B/C} = 30/25/45$.

3.2 Crystal structure of Pr_2BC

Metallographic and EPMA analyses of the Pr-B-C ternary system reveal the new compound Pr_2BC to be in equilibrium with elemental Pr and Pr_2B_5 [35] (see Fig.1) or in another sample in equilibrium with $\text{Pr}_5\text{B}_2\text{C}_5$ [16] and Pr [44] as well at 1070 K and at 1270 K and they are in good agreement with results from X-ray powder diffraction. Our attempts to synthesize isostructural RE_2BC compounds with other rare earth metals (except Nd) by the experimental conditions described above were not successful. Indeed, the ternary compound Pr_2BC crystallizes in the Nd_2BC structure type, with space group $C2/m$ (Fig. 3a), which is closely

related to the crystal structures of other ternary compounds containing finite isolated boron-carbon chains of different lengths [10]. Contrarily to other known structures the Pr framework adopts a pseudohexagonal symmetry in the [010] direction. The three-dimensional (3-D) framework consists of two different slabs *F* and *E*, formed from condensed trigonal prisms along the [010] direction. One slab (*F*) in Pr₂BC is filled by bent [C-B-B-C] units with distances $d_{C-B} = 1.51(1) \text{ \AA}$, $d_{B-B} = 1.68(2) \text{ \AA}$, and C-B-B angle = $133.6(1)^\circ$ (see Fig. 3a), comparable to those measured in Nd₂BC [20]. Such units are also encountered in related compounds such as La₅B₂C₆ [5] and for Ce₆Br₃B₂C₃ [45] for instance. According to the distances and angles measured, a formal charge of 8- can be suggested for these boron carbon chains, rendering them isoelectronic to 1,3-butadiene. The ionic formulation (Pr³⁺)₄(B₂C₂)⁸⁻ · 4 e- can then be proposed suggesting metallic properties as computed for Nd₂BC [20]. The boron atoms occupy the center of trigonal prisms of praseodymium atoms. Pr-B distances range from 2.77(1) Å to 2.903(8) Å for Pr2 and 2.938(8) Å for Pr1. The carbon atoms are located in Pr₅ square pyramids with Pr-C distances of 2.637(8) Å (x 4) and 2.44(1) Å (x 1) (see Fig. 3b). Condensation of two trigonal prisms via a common rectangular face and their opposite capping with square pyramids leads to Pr₁₀ cages embedding the [C-B-B-C] units (see Fig. 3b). The Pr-Pr distances in the slabs containing the C₂B₂ units range from 3.668(1) Å to 3.994(7) Å. In empty slabs (*E*) formed only from Pr atoms (Fig. 3a) and linking both adjacent filled *F* slabs, Pr-Pr distances are larger than in the filled ones and range from 3.752(1) Å to 4.195(1) Å.

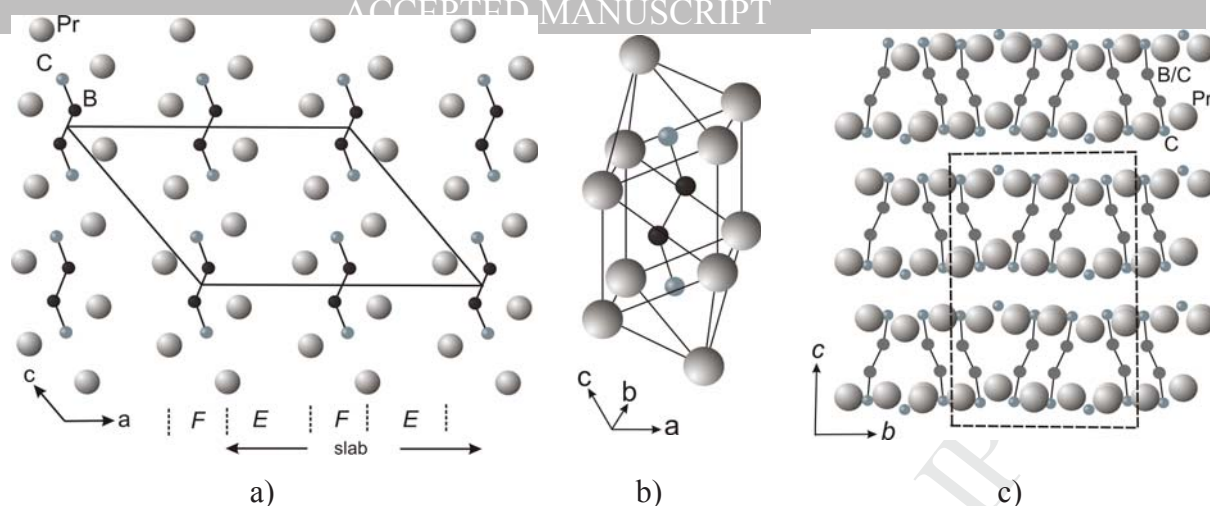


Fig. 3. The crystal structure of Pr_2BC (a), praseodymium environment of B_2C_2 units in Pr_2BC (b), and the crystal structure of $\text{Pr}_5\text{B}_2\text{C}_6$ (c).

3.3 Solid solution $\text{Pr}_5(\text{BC})_x$ ($7.5 \leq x \leq 9.3$)

The crystal structure, twinning and intergrowth of the samples with different compositions $\sim\text{Pr}_5\text{B}_2\text{C}_6$ were investigated in [14, 46]. These samples exhibit a pronounced tendency to form twins and coherently intergrown domains of different phases. A large variation of cell parameters was also evidenced. The structural arrangement of $\sim\text{Pr}_5\text{B}_2\text{C}_6$ ($\text{La}_5\text{B}_2\text{C}_6$ structure type [5]) consists of a 3-D framework of rare-earth atoms resulting from the stacking of slightly corrugated two-dimensional squares, which leads to the formation of octahedral voids and distorted bicapped square antiprismatic cavities (Fig. 3c). They are filled with isolated carbon atoms and twofold disordered [CBCC] units, respectively. The C1 and C2/B2 atoms in $\sim\text{Pr}_5\text{B}_2\text{C}_6$ form bent [CBCC] units with C/B-C distances of 1.32 Å indicative of double bond character and C/B-C/B distances of 1.65 Å. The C-C/B-C/B angle is 158.1°. Our systematic studies of the similar solid solution $\text{La}_5\text{B}_{2-x}\text{C}_{6+y}$ led to the formula $\text{La}_5(\text{BC})_x$ ($5.6 \leq x \leq 8.8$) [24]. Samples with different compositions of $\sim\text{Pr}_5\text{B}_2\text{C}_6$ exhibit different cell parameters (Table 4). Changes are pronounced depending upon Pr and non-metal atoms stoichiometry and the cell volumes increase from 845.9(7) to 891.6(8) Å³ (Table 4). The results of the Rietveld refinements of XRD powder data are similar to the single crystal structure investigation reported earlier [14, 46]. The atoms in the structure exhibit large displacement parameters for the central C/B atoms

of the [CBCC] units in line with the disorder of occupation by either [CBC] or [CBCC] units for the large voids and single carbon atoms in octahedral voids. This is the reason for the large homogeneity region of this compound. The WDX analysis of the investigated samples shows that the boron content in the anionic chains $[C=B-C=C]^{7-}$ (assuming the formal charge for the B/C atoms to obey the octet rule) of $\sim\text{Pr}_5\text{B}_2\text{C}_6$ structure varies from 14(1) to 18(1) at % (Table 4) which leads to a decrease in charge as well as disorder of light elements. The overall charge of the anionic part seems to be compensated by the introduction of single carbon atoms (C3) in Pr octahedra. So, the homogeneity region of $\sim\text{Pr}_5\text{B}_2\text{C}_6$ is defined as $\text{Pr}_5(\text{BC})_x$ ($7.5 \leq x \leq 9.3$) and shown in Fig. 1. The lanthanum compound $\sim\text{La}_5\text{B}_2\text{C}_6$ exhibits a more pronounced homogeneity region than $\text{Pr}_5\text{B}_2\text{C}_6$ due to the fact that in the Pr-B-C the other ternary compound $\text{Pr}_5\text{B}_2\text{C}_5$ also exists.

4. Conclusion

The isothermal section of the Pr–B–C phase diagram at 1270 K and 1070 K was investigated by means of X-ray diffraction, microstructure and EPMA analyses. Eleven ternary compounds were found. For eighth of them, namely PrB_2C_2 , $\text{Pr}_5\text{B}_2\text{C}_5$, $\text{Pr}_5\text{B}_4\text{C}_5$, $\text{Pr}_5\text{B}_2\text{C}_6$, PrBC , $\text{Pr}_{10}\text{B}_9\text{C}_{12}$, $\text{Pr}_{15}\text{B}_6\text{C}_{18}$ and $\text{Pr}_{25}\text{B}_{14}\text{C}_{26}$, the crystal structures were established previously. Indeed, our studies showed that both phases $\text{Pr}_{15}\text{B}_6\text{C}_{20}$ and $\text{Pr}_{25}\text{B}_{14}\text{C}_{26}$ exist above 1270 K. We also observed that the $\sim\text{Pr}_5\text{B}_2\text{C}_6$ compound has a broad homogeneity range described by the formula $\text{Pr}_5(\text{BC})_x$ ($7.5 \leq x \leq 9.3$). For the boundary compounds of the Pr-B and Pr-C system no extension in the ternary domain was found. Three new ternary compounds were isolated, namely Pr_2BC , $\sim\text{Pr}_4\text{B}_3\text{C}_{13}$ and $\sim\text{Pr}_7\text{B}_9\text{C}_{34}$. The new compound Pr_2BC crystallizes in Nd_2BC structure type [20]. In contrast to other rare earth metals with smaller atomic radius, praseodymium boride carbides do not form compounds with infinite one-dimensional planar or nearly planar $(\text{BC})_\infty$ ribbons. Except PrB_2C_2 , which adopt the CeB_2C_2 structure type with 2-D B/C nets [33], all the

investigated structures contain finite (0-D) quasi-molecular linear or bent B/C entities of different lengths, which fill voids in praseodymium atom cages.

Acknowledgements

The authors gratefully thank M. Babizhetska for the sample preparation, H. Gärtling for X-ray intensity data collection and V. Duppel for EPMA analysis.

References

- [1] J. Bauer, G. Boucekkine, G. Frapper, J.-F. Halet, J.-Y. Saillard, B. Zouhoune, *J. Solid State Chem.* 133 (1997) 190.
- [2] J. Bauer, J.-F. Halet, J.-Y. Saillard, *Coord. Chem. Rev.* 178-180 (1998) 723-753 and refs. therein.
- [3] (a) J.-F. Halet in *Contemporary Boron Chemistry*, M. G. Davidson, A. K. Hugues, T. B. Marder, K. Wade (Eds.), Royal Society of Chemistry, Cambridge, 2000, p. 514 and refs. therein.
(b) S. Lassoued, R. Gautier, J.-F. Halet in *Boron Rich Solids: Sensors, Ultra High Temperature Ceramics, Thermoelectrics, Armor*, N. Orlovskaya, M. Lugovy (Eds.), Springer Science and Business Media V. B., 2011, pp. 95 and refs. therein.
- [4] M. Ben Yahia, J. Roger, X. Rocquefelte, R. Gautier, J. Bauer, R. Guérin, J.-Y. Saillard, J.-F. Halet, *J. Solid State Chem.* 179 (2006) 2779 and refs. therein.
- [5] (a) J. Bauer, O. Bars, *J. Less-Common Met.* 83 (1983) 17.
(b) O. Oeckler, J. Bauer, H.j. Mattausch, A. Simon, *Z. Anorg. Allg. Chem.* 627 (2001) 779.
- [6] (a) J.-F. Halet, J.-Y. Saillard, J. Bauer, *J. Less-Common Met.* 158 (1990) 239.
(b) Y. Shi, A. Leithe-Jasper, T. Tanaka, *J. Solid State Chem.* 184 (1999) 250.
- [7] P. Gougeon, J.-F. Halet, D. Ansel, J. Bauer, *Z. Kristallogr.* 211 (1996) 822.
- [8] (a) P. Gougeon, J.-F. Halet, D. Ansel, J. Bauer, *Z. Kristallogr.* 211 (1996) 823.
(b) V. Babizhetskyy, H.j. Mattausch, A. Simon, *Z. Kristallogr.* 219 (2004) 11.

- [9] (a) P. Gougeon, J.-F. Halet, D. Ansel, J. Bauer, *Z. Kristallogr.* 211 (1996) 824.
(b) V. Babizhetskyy, Hj. Mattausch, A. Simon, *Z. Kristallogr.* 218 (2003) 417.
- [10] J. Bauer, D. Ansel, F. Bonhomme, G. Boucekkine, G. Frapper, P. Gougeon, J.-F. Halet, J.-Y. Saillard, B. Zouchoune, *Angew. Chem.*, 108 (1996) 2245; *Angew. Chem. Int. Ed. Engl.*, 35 (1996) 2098.
- [11] E. Bidaud, K. Hiebl, R.-D. Hoffmann, R. Pöttgen, C. Jardin, J. Bauer, R. Gautier, P. Gougeon, J.-Y. Saillard, J.-F. Halet, *J. Solid State Chem.* 154 (2000) 286.
- [12] (a) Y. Shi, A. Leithe-Jasper, L. Bourgeois, Y. Bando, T. Tanaka, *J. Alloys Compd.* 298 (2000) 99.
(b) T. Mori, Y. Shi, T. Tanaka, *J. Alloys Compd.* 308 (2000) 115.
- [13] O. Oeckler, C. Jardin, Hj. Mattausch, A. Simon, J.-F. Halet, J.-Y. Saillard, J. Bauer, *Z. Anorg. Allg. Chem.* 627 (2001) 1389.
- [14] O. Oeckler, Hj. Mattausch, J. Bauer, A. Simon, *Z. Naturforsch.* 59b (2004) 1551.
- [15] V. Babizhetskyy, Hj. Mattausch, A. Simon, R. Gautier, J. Bauer, J.-F. Halet, *Z. Anorg. Allg. Chem.* 631 (2005) 1041.
- [16] V. Babizhetskyy, Hj. Mattausch, A. Simon, *Z. Kristallogr. NCS* 221 (2006) 1.
- [17] V. Babizhetskyy, K. Hiebl, R. K. Kremer, Hj. Mattausch, A. Simon, *Solid State Sci.* 9 (2007) 1126.
- [18] V. Babizhetskyy, K. Hiebl, Hj. Mattausch, A. Simon, *J. Phys. Chem. Solids.* 70 (2009) 561.
- [19] V. Babizhetskyy, Hj. Mattausch, A. Simon, K. Hiebl, M. Ben Yahia, R. Gautier, J.-F. Halet, *J. Solid State Chem.* 181 (2008) 1882.
- [20] V. Babizhetskyy, J. Köhler, Hj. Mattausch, A. Simon, *Z. Kristallogr.* 226 (2011) 93.
- [21] V. Babizhetskyy, Hj. Mattausch, A. Simon, R. Gautier, J.-F. Halet, *J. Solid State Chem.* 184 (2011) 1671.
- [22] Y. Shi, A. Leithe-Jasper, T. Tanaka, *J. Solid State Chem.* 148 (1999) 250.
- [23] J. Bauer, H. Nowotny, *Monatsh. Chem.* 102 (1971) 1129.

- [24] V. Babizhetskyy, A. Simon, J. Bauer, *Monatsh. Chem.* 145 (2014) 869.
- [25] K. A. Schwetz, M. Hoerle, J. Bauer, *Ceramurgia Intl.* 5 (3) (1979) 105.
- [26] (a) P. K. Smith, P. W. Gilles, *J. Inorg. Nucl. Chem.* 29 (1967) 375.
(b) D. Ruiz, M. T. Garland, J-Y. Saillard, J.-F. Halet, M. Bohn, J. Bauer *Solid State Sci.* 4 (2002) 1173.
- [27] J. Bauer, P. Vernegues, J. L. Vergneau., *J. Less Comm. Met.* 110 (1985) 295.
- [28] B. Horvath, J. Strutz, J. Geyer-Lippmann, G. Horvath, *Z. Anorg. Allg. Chem.* 483 (1981) 205.
- [29] L. Akselrud, Y. Grin, *J. Appl. Crystallogr.* 47 (2014) 803.
- [30] A. Altomare, M. C. Burla, M. Camalli, G. L. Cascarano, C. Giacovazzo, A. Guagliardi, A. G. Giuseppina Moliterni, G. Polidori, R. Spagna, *J. Appl. Crystallogr.* 32 (1999) 115.
- [31] G. M. Sheldrick, SHELXL-97, Program for the Refinement of Crystal Structures, University of Göttingen (Germany) (1997).
- [32] L. J. Farrugia, WinGX (Version 1.64.05), *J. Appl. Crystallogr.* 32 (1999) 837.
- [33] K. Onoyama, K. Kaneko, K. Indoh, H. Yamauchi, A. Tobo, H. Onodera, Y. Yamaguchi, *J. Phys. Soc. Japan.* 11 (70) (2001) 3291.
- [34] B. Post, D. Moskowitz, F. W. Glaser, *J. Amer. Chem. Soc.* 78 (1956) 1800.
- [35] Yu. B. Kuz'ma., V. S. Babizhetskyy, R. Guerin, S. I. Mikhaleiko, *Crystallography Reports.* 48(4) (2003) 568.
- [36] N. N. Tvorogov, *Russ. J. Inorg. Chem.* 4 (1959) 890.
- [37] K. E. Spear, *Boron and Refractory Borides* (Springer, Berlin, 1977), p. 439.
- [38] Y. Peng, Y. Dua, L. Zhang, C. Sha, S. Liu, F. Zheng, D. Zhao, X. Yuan, L. Chen, *CALPHAD* 35 (2011) 533.
- [39] F. H. Spedding., K. A. Gschneidner Jr, A. H. Daane, *J. Am. Chem. Soc.* 80 (1958) 4499.
- [40] P. F. Rogl, J. Vrestal, T. Tanaka, S. Takenouchi, *CALPHAD* 44 (2014) 3.
- [41] B. Morosin, G. H. Kwei, A. C. Lawson, T. L. Aselage, D. Emin, *J. Alloys Compd.* 226 (1995) 121.

[42] O. Sologub, Y. Michiue, T. Mori, *Acta Cryst. E* 68 (2012) i67 and refs therein.

[43] M. Atoji, *J. Chem. Phys.* 46 (1967) 1891.

[44] P. Villars, L. D. Calvert: *Pearson's Handbook of Crystallographic Data for Intermetallic Phases*, 2nd ed., ASM, Materials Park, OH, 1991.

[45] Hj. Mattausch, A. Simon, *Angew. Chem. Int. Ed. Engl.* 34 (1995) 1633.

[46] O. Oeckler, V. Duppel, J. Bauer, Hj. Mattausch, A. Simon, *Acta Cryst. B* 58 (2002) 161.

Highlights

► Solid-state phase equilibrium in the Pr-B-C system was established at 1270 K. ► Eleven ternary compounds were isolated. ► The monoclinic structure of Pr₂BC was solved from X-ray single crystal data. ► The phase of Pr₃B₂C₆ shows a broad homogeneity range.

ACCEPTED MANUSCRIPT