



**HAL**  
open science

## Frequent expression of PD-L1 on circulating breast cancer cells

Martine Mazel, William Jacot, Klaus Pantel, Kai Bartkowiak, Delphine Topart, Laure Cayrefourcq, Delphine Rossille, Thierry Maudelonde, Thierry Fest, Catherine Alix-Panabières

► **To cite this version:**

Martine Mazel, William Jacot, Klaus Pantel, Kai Bartkowiak, Delphine Topart, et al.. Frequent expression of PD-L1 on circulating breast cancer cells. *Molecular Oncology*, 2015, 9 (9), pp.1773-1782. 10.1016/j.molonc.2015.05.009 . hal-01162382

**HAL Id: hal-01162382**

**<https://univ-rennes.hal.science/hal-01162382>**

Submitted on 12 Nov 2015

**HAL** is a multi-disciplinary open access archive for the deposit and dissemination of scientific research documents, whether they are published or not. The documents may come from teaching and research institutions in France or abroad, or from public or private research centers.

L'archive ouverte pluridisciplinaire **HAL**, est destinée au dépôt et à la diffusion de documents scientifiques de niveau recherche, publiés ou non, émanant des établissements d'enseignement et de recherche français ou étrangers, des laboratoires publics ou privés.

**Frequent expression of PD-L1 on circulating breast cancer cells.**

Martine Mazel<sup>a,b\*</sup>, William Jacot<sup>c\*</sup>, Klaus Pantel<sup>d</sup>, Kai Bartkowiak<sup>d</sup>, Delphine Topart<sup>e</sup>,  
Laure Cayrefourcq<sup>a,b</sup>, Delphine Rossille<sup>f,g</sup>, Thierry Maudelonde<sup>b,h</sup>, Thierry Fest<sup>f,g</sup>,  
Catherine Alix-Panabières<sup>a,b#</sup>

**Authors' Affiliations:**

<sup>a</sup>Laboratory of Rare Human Circulating Cells, Department of Cellular and Tissular Biopathology of Tumors, University Medical Centre, Montpellier, France;

<sup>b</sup>EA2415 – Help for Personalized Decision: Methodological Aspects, University Institute of Clinical Research (IURC), Montpellier University, Montpellier, France;

<sup>c</sup>Department of Medical Oncology, Montpellier Cancer Institute (ICM), Montpellier, France;

<sup>d</sup>Department of Tumor Biology, University Medical Centre Hamburg-Eppendorf, Hamburg, Germany.

<sup>e</sup>University Medical Centre, Saint-Eloi Hospital, Department of Medical Oncology, Montpellier, France;

<sup>f</sup>INSERM UMR917, University of Rennes 1 and EFS, Rennes, France ;

<sup>g</sup>Laboratory of Hematology, University Medical Centre Pontchaillou, Rennes, France ;

<sup>h</sup>Laboratory of Hormonal and Cell Biology, Department of Cellular and Tissular Biopathology of Tumors, University Medical Centre, Montpellier, France.

\*Both authors contributed equally to the work

#Corresponding author

**Corresponding Author:** Catherine Alix-Panabières, Laboratory of Rare Human Circulating Cells, Department of cellular & tissular Biopathology, Saint-Eloi Hospital, University Medical Centre, 80, avenue Augustin Fliche, Montpellier, France, E-mail: [c-panabieres@chu-montpellier.fr](mailto:c-panabieres@chu-montpellier.fr), Tél.: +33 (0)4 67 33 05 05, Fax: +33 (0)4 67 33 01 13.

**Disclosure:** The authors disclose no potential conflicts of interest.

**Running Title:** PD- L1 expression on Circulating Tumor cells

## ABSTRACT

Immune checkpoint regulators such as PD-L1 have become exciting new therapeutic targets leading to long lasting remissions in patients with advanced malignancies. However, in view of the remarkable costs and the toxicity profiles of these therapies, predictive biomarkers able to discriminate responders from non-responders are urgently needed. In the present paper, we provide evidence that PD-L1 is frequently expressed on metastatic cells circulating in the blood of hormone receptor-positive, HER2-negative breast cancer patients. We performed western blot, flow cytometry and immunocytochemical analyses to demonstrate the specificity of the PDL1 antibody used in our study and established immunoscores for PDL1 expression on single tumor cells. We then selected sixteen patients with circulating tumor cells (CTCs) using the CellSearch<sup>®</sup> system and found PD-L1<sup>(+)</sup> CTCs in 11 patients (68.8%). The fraction of PD-L1<sup>(+)</sup> CTCs varied from 0.2 to 100% in individual patients. This is the first report demonstrating the expression of PD-L1 on CTCs. The established CTC/PD-L1 assay can be used for liquid biopsy in future clinical trials for stratification and monitoring of cancer patients undergoing immune checkpoint blockade.

**Key words:** Circulating tumor cells, PD-L1 expression, Breast Cancer

## 1. Introduction

The prognosis of cancer patients, even with localized primary tumors, is mainly determined by the circulation of tumor cells in the peripheral blood from the primary site to distant organs such as bone marrow, liver, lungs, or brain, and the subsequent outgrowth of a largely unknown subset of these cells into metastases in their new microenvironment (Eccles and Welch, 2007). The colonization of distant organs by disseminated tumor cells, resulting in the appearance of clinically detectable metastases, can take many years in breast cancer (Braun et al., 2005) and the mechanisms behind this "cancer dormancy" are largely unknown (Chambers et al., 2002; Goss and Chambers, 2010; Uhr and Pantel, 2011). This stringent selection process together with a potential independent genomic progression of disseminated tumor cells may explain why overt metastases can harbor unique genomic alterations differing from the bulk of the original primary tumor cells (Flatmark et al., 2002; Kang and Pantel, 2013; Riethdorf et al., 2010). Thus, the direct analysis of metastatic cells could reveal important information for systemic cancer therapy targeting metastatic disease (Alix-Panabieres et al., 2012; Pantel et al., 2008). However, biopsy of overt metastases is an invasive procedure limited to certain locations and not easily acceptable in the clinic. Moreover, a recent work has shown that different metastatic sites harbour different genomic aberrations (Gerlinger et al., 2012) and biopsy of one or two accessible metastases may not be representative of the whole metastatic disease biology.

An alternative approach is the analysis of blood samples for circulating tumor cells (CTCs) detection and characterization as a liquid biopsy of the cancer (Alix-Panabieres and Pantel, 2014). It can be performed frequently and might allow real-

time monitoring of cancer therapies in individual patients (Alix-Panabieres et al., 2012). Recent reports indicated that CTCs give important complementary information on therapeutic targets and drug resistance mechanisms in carcinoma patients (Alix-Panabieres and Pantel, 2014). CTCs isolated in the peripheral blood are a pool of cells derived from the primary tumor and different metastatic sites and may, therefore, provide a comprehensive real-time picture of the whole tumor burden in an individual patient (Pantel and Alix-Panabieres, 2013).

Characterization of tumor cells is of utmost importance. More specifically, PD-L1 expressed in tumors has been recently highlighted to function as a key component of the cancer-immunity cycle by preventing the immune system from destroying cancer cells (Butt and Mills, 2014). PD-1 receptor (CD279) is expressed on the surface of activated T cells and its ligands, PD-L1 (B7-H1; CD274) and PD-L2 (B7-DC; CD273), are expressed on the surface of antigen-presenting cells such as macrophages or dendritic cells. When PD-L1 binds to PD-1, a strong inhibitory signal is transmitted into the T cell, which induces a reduction of cytokine production and a suppression of T-cell proliferation (Brahmer et al., 2012; Chen et al., 2012; Topalian et al., 2012): the immune system is misled by the surrounding cancer cells expressing PD-L1 and does not destroy them.

Efforts to restore latent anti-tumor immunity have focused on antibody-based interventions targeting CTL antigen 4 (CTLA-4) and programmed cell death protein 1 (PD-1) on T lymphocytes and its principal ligand (PD-L1) on tumor cells (Shin and Ribas, 2015). Ipilimumab, an antibody targeting CTLA-4, appears to restore tumor immunity at the priming phase, whereas anti-PD-1/PD-L1 antibodies restore immune function in the tumor microenvironment. Although ipilimumab can produce durable long-term responses in patients with advanced melanoma, it is associated with

significant immune-related toxicities (Shin and Ribas, 2015). By contrast, antibodies targeting either PD-1 or PD-L1 have produced significant anti-tumor activity with considerably less toxicity (Shin and Ribas, 2015) and are being actively investigated for the treatment of multiple cancers including lung, breast, bladder and renal cancers (Philips and Atkins, 2015). Current efforts focus on registration trials of single agents and combinations in various diseases and settings, as well as on identifying predictive biomarkers of response. Ever since the earliest reports of the effects of PD-1 blockade, PD-L1 expression by tumor cells has been used as potential biomarker to predict a therapeutic response. We recently showed that the level of soluble PD-L1 present in the blood could predict patient's outcome in aggressive B-cell lymphomas (Rossille et al., 2014). However, the predictive value of PDL1 expression measurements of primary carcinomas seems to be limited. Moreover, there is only a weak correlation in staining between the matched primary tumor and distant metastasis, suggesting that the primary tumor is not an adequate surrogate for determining PD-L1 expression in metastatic sites (Jilaveanu et al., 2014). Tissue heterogeneity in PD-L1 expression in both primary and metastatic sites for a given patient indicates that a single core biopsy might be not sufficient to determine tumor PD-L1 expression (Jilaveanu et al., 2014).

CTCs are currently investigated as predictive biomarker for HER2-targeting therapies (Bidard et al., 2013) and the same strategy could be used for immune checkpoint blockade therapies such as antibodies to PD-L1. Jilaveanu *et al.* reported that distant sites have greater PD-L1 expression than the primary tumor (Jilaveanu et al., 2014). However, there is, to date, no report on the expression of PD-L1 on CTCs in breast cancer or other tumor entities. To investigate whether CTCs express PD-L1, we applied the CellSearch<sup>®</sup> system to blood samples from patients with metastatic

breast cancer before any treatment. Interestingly, we detected a subset of CTCs expressing PD-L1 in the blood of patients with metastatic breast cancer using a non-invasive liquid biopsy. This specific subset represents metastatic cells with a high potential to escape T cell-mediated lysis and these cells are therefore the actual targets of anti-PDL1 antibody therapy.

ACCEPTED MANUSCRIPT



## **2. Materials and methods**

### **2.1. Patient samples and blood collection**

After informed consent was given, peripheral blood from patients with hormone receptor-positive (HR<sup>+</sup>), HER2-negative (HER2<sup>-</sup>) metastatic breast cancer was collected before the start of treatment (CPP number 2011-AOI163-38). Patients were recruited at the University Medical Centre of Montpellier (Department of Medical Oncology) and at the Montpellier Cancer Institute (ICM). Blood was drawn from the arm vein of each cancer patient in specific CellSave® tubes (Janssen, 10mL) for CTC detection. Tubes were then conserved at room temperature and sent to the Laboratory “Detection of Rare Human Circulating Cells – LCCRH” at the University Medical Center of Montpellier where blood samples were processed immediately on the CellSearch® system. The BRISQ criteria have been listed in the Table 1 (Moore et al., 2011). This study belongs to the BMS\_PD-L1\_onco clinical trial (NCT10660776), which assesses PD-L1 as a biomarker in oncology and hematology.

### **2.2. Cell culture**

Mammary cancer cell lines SKBR3 (ATCC® HTB-30™), MCF7 (ATCC® HTB-22™), MDA-MB-231 (ATCC® CRMHTB-26™) were purchased from the American Type Culture Collection (Manassas, VA) and cultured in Dulbecco's modified Eagle's medium (Invitrogen, Carlsbad, CA) supplemented with 10% fetal bovine serum (Eurobio, FR), 2µg/ml Gentamicin and 20UI/ml penicillin. Diffuse Large B-Cell Lymphoma (DLBCL) cell line SU-DHL-4 (ATCC® CRL-2957) cultured in RPMI 1640 medium (Invitrogen, Carlsbad, CA) supplemented with 10% fetal bovine serum (Eurobio, FR), 2µg/ml Gentamicin and 20UI/ml penicillin. Cells were cultured in 25

cm<sup>2</sup> flasks at 37°C in a humidified atmosphere containing 5% CO<sub>2</sub>.

### 2.3. CTC enumeration

Seven and half milliliters of blood collected in the CellSave tube were used for CTC detection using the FDA-cleared CellSearch<sup>®</sup> system (Janssen, Beerse, Belgium).

Blood samples were processed on the CellTracks Autoprep within 72h. The CellSearch<sup>®</sup> CXC Kit (Janssen) was used for these specific experiments. It includes a cytokeratin-fluorescein/CD45-allophycocyanin (APC) reagent, leaving the phycoerythrin (PE) channel of the Celltracks Analyzer II<sup>®</sup> open to incorporate a user-defined PE-conjugate for further characterization of the CTCs. In our project, we improved the CTC detection by using the 4<sup>th</sup> channel of the CellSearch<sup>®</sup> for PD-L1 expression: we used the anti-human B7-H1/PD-L1 PE-conjugated monoclonal antibody (MAb, Cat N° FAB1561P, R&D Systems, Minneapolis, USA) at a final concentration of 20 µg/mL. The corresponding isotypic control (Mouse IgG1 PE, Cat N° IC002P, R&D Systems, Minneapolis, USA) was used at the same final concentration (20 µg/mL).

Briefly, fixed CTCs were first positively enriched via the epithelial cell adhesion molecule (EpCAM) expression and defined as EpCAM isolated intact cells stained positive for cytokeratins (CK8, 18, 19), positive or negative for B7H1 (PD-L1) and negative for CD45 (the exclusion marker specific of normal hematopoietic cells): CTCs were identified as EpCAM<sup>(+)</sup>DAPI<sup>(+)</sup>CK<sup>(+)</sup>CD45<sup>(-)</sup>.

As control group, we analysed in parallel blood samples from 15 healthy controls provided by the regional centre of blood transfusion (Etablissement Français du Sang of Montpellier, France).

#### 2.4. Flow cytometry experiments

A fixation/permeabilization kit (Beckman Coulter, Brea, USA) was used to prepare the cells before the addition of the anti-human B7H1 Ab or Mouse IgG1 PE at a final concentration of 20 µg/mL on 0.2 million SKBR3 cells and 0.2 SU-DHL-4. Briefly, cells and both Abs were incubated for 60 min at room temperature in the dark. Cells were then washed with PBS supplemented with 2% fetal bovine serum, centrifuged (600g – 5 min) and the cell pellet was recovered with 400µL PBS. Labelled cancer cells were detected by using the Cyan cytometer (Beckman Coulter) and the data analysis was performed using the *Kaluza* software (Beckman Coulter).

Other anti-human B7H1 Abs have been tested: (1) clone 3.1 anti-CD274-PE Ab (ref IM99509, Beckman Coulter), (2) anti-CD274-FITC (ref 558065, Becton Dickinson), and (3) B7-H1-A488 (ref FAB1561G, R&D Systems). As shown by the **Figure 1**, a direct ELISA on different proteins showed the specificity of the anti-human B7H1 MAb, (Cat N° FAB1561P, R&D Systems; data given by R &D systems).

#### 2.5. Immunocytochemical analyses

SKBR3 cancer cells were labelled as described above using the concentration of the anti-human B7-H1 MAb required for the CellSearch<sup>®</sup> system (20 µg/mL) and centrifuged gently in a Cytospin<sup>™</sup> 4 Cyto centrifuge (Thermo Scientific) on standard glass slides. A drop of the ProLong<sup>®</sup> Gold antifade reagent with DAPI (Invitrogen, Ref-P36931) was added on the preparation to stain nuclei in blue and slides were mounted. Stained cancer cells were finally observed under a fluorescent microscope (Axio Imager.M1, Zeiss) and automatically analyzed with the software AxioVision Release 4.6.3.

## 2.6. Western Blot analysis

The primary anti-PD-L1 B7-H1/PD-L1 MAb (IgG1 Clone #130021, Cat N° MAB1561, R&D Systems) was analyzed versus the Mouse IgG1 Isotype Control (mouse monoclonal, Clone #11711, Cat N° MAB002, R&D Systems). As a loading control, anti-alpha-Tubulin (11H10) antibody, from Cell Signaling Technology (Danvers, USA) was used. Protein samples from the cell lines MDA-MB-468, MDA-MB-231, BT-20, PC-3, LNCAP, Du145, SCC25, Cal27, MDA-MB-231-SA, BC-M1, PC-E1 and SU-DHL-4 were analyzed. Cells were harvested in 9.8 M urea, 15 mM EDTA, 30 mM Tris, followed by a cell disruption step by ultrasonic treatment. Insoluble compounds were removed by centrifugation and the supernatant was collected. The protein concentration was determined using the Pierce BCA Protein Assay Kit (Pierce, Rockford, USA) using BSA as the standard. Proteins were separated by SDS-PAGE using either the Novex XCell Sure-Lock mini system (Invitrogen, Groningen, Netherlands) or the Protean II xi cell (Bio-Rad, Hercules, USA). A Laemmli buffer system and 10% polyacrylamide separation gels were used. The molecular size standard was the peqGOLD protein-marker V (PepLab, Erlangen, Germany). The proteins were transferred to Immobilon-PSQ membranes (Millipore GmbH, Schwalbach, Germany) using the mini VE vertical electrophoresis system equipped with tank blot transfer units (GE Healthcare, Uppsala, Sweden). The primary antibodies were applied to the membranes at 4 °C with gentle agitation over night. Protein bands were detected using the SignalFire ECL Reagent (Cell Signaling Technology) and X-ray films (GE Healthcare). X-ray films were digitized using the GS-700 imaging densitometer (Bio-Rad).

### 3. Results

#### 3.1. Establishment of the B7-H1/PD-L1 CTC analysis.

For the establishment of a novel assay detecting CTCs expressing PD-L1, the sensitivity, specificity and the dynamic range of the PD-L1 R&D antibody was determined by Western Blot in an array of experiments and cell lines. The PD-L1 R&D antibody was found to detect very low levels of PD-L1, provided only one strong signal at approx. 55 kDa and exhibited a linear increase of the signal intensity proportional to the applied protein amount. For the isotype control very weak or no signal at all was detected in the analyzed cell lines (**Figure 2A**). MDA-MB-231 served as a useful positive control for the establishment of the Western Blot. However, the extraordinary high signal intensity of the PD-L1 R&D antibody frequently resulted in oversaturation of the signals in the Western Blots. To circumvent oversaturation of the signals in subsequent immunofluorescent assays, we therefore focused on the cell line SKBR3, because these cells show a range of levels of PD-L1 expression, which enabled us to develop immunoscores for various degrees of PDL1 on single tumor cells.

Next, we analyzed the different breast cancer cell lines SKBR3, MCF-7 and MDA-MB-231 by flow cytometry. All these cell lines were positive for PD-L1 (data not shown). The presence of PD-L1 on SKBR3 cells was confirmed by flow cytometry (**Figure 2B**) and immunofluorescent staining of cytopins (**Figure 2C**). The specificity of the staining was demonstrated by the fact that no signals were detected for the cell line SU-DHL-4 (established negative control) and for the isotype control on SKBR3 cells. Next, SKBR3 (PD-L1<sup>(+)</sup>) and SU-DHL-4 (PD-L1<sup>(-)</sup>) were analyzed for PD-L1 using the CellSearch<sup>®</sup> system with PD-L1 implemented in the 4th channel (Fig. 2D).

We selected the anti-human B7-H1/PD-L1 PE-conjugated monoclonal antibody (MAb) from R&D. Other anti-human B7H1 Abs have been also tested at different concentrations with the CellSearch<sup>®</sup> system: (1) clone 3.1 anti-CD274-PE Ab (ref IM99509, Beckman Coulter), (2) anti-CD274-FITC (ref 558065, Becton Dickinson), and (3) B7-H1-A488 (ref FAB1561G, R&D Systems). However, a concentration of only 20 µg/mL of the PE-conjugated monoclonal antibody (MAb) from R&D was needed to get an optimal staining, whereas a concentration of 40 µg/mL was necessary for all the other antibodies (data not shown).

When we performed additional experiments with the CellSearch<sup>®</sup> system dedicated for CTC detection on pure SKBR3, we could observe single PD-L1<sup>(+)</sup> SKBR3 tumor cells (**Figure 3A**) as well as clusters (**Figure 3B**) of PD-L1<sup>(+)</sup> SKBR3 tumor cells. Moreover, we defined a “PD-L1 immunoscore” with three different scores for the intensity of PD-L1 expression by single SKBR3 tumor cells and SKBR3 tumor cell clusters: score 0 (*no PD-L1 expression*), score 1 (*low PD-L1 expression*) and score 2 (*high PD-L1 expression*) (**Figure 3**).

### **3.2. Spiking experiments of SKBR3 in control blood**

We performed spiking experiments by adding 200 SKBR3 cells in 7.5 mL of blood from healthy donors and detected the breast cancer cells using the CellSearch<sup>®</sup> system with the CellSearch<sup>®</sup> CXC Kit. These results demonstrated the feasibility to detect PD-L1<sup>(+)</sup> tumor cells in blood samples with this technology dedicated for CTC detection. SKBR3 cells could be detected with a recovery rate of 79.5%, which is consistent with the results obtained the standard CTC kit (Riethdorf et al., 2007).

### 3.3. PD-L1<sup>(+)</sup> CTC from metastatic breast cancer patients

Peripheral blood samples from HR<sup>(+)</sup>, HER2<sup>(-)</sup> metastatic breast cancer patients (one male, fifteen females) were analyzed by the CellSearch<sup>®</sup> system implemented with the PD-L1 detection by using the optimized conditions described above. For our study, we selected sixteen patients with a CTC count  $\geq 1$  using the CellSearch<sup>®</sup> system (mean, 254.5; median, 18.5; Range, 1-3146) and 13 of 16 (81.3%) patients with a CTC count  $\geq 5$  (mean, 312.5; median, 27; Range, 7-3146), the prognostic cut-off for patients with metastatic breast cancer (Cristofanilli et al., 2004) (**Table 2**). Eleven patients out of 16 showed a subpopulation of CTCs expressing PD-L1 (68.8%) scored 1 or 2 (**Table 2; Figure 4A**). The fraction of PD-L1<sup>(+)</sup> CTCs varied from 0.2 to 100% (**Table 2**). However, this information may also depend on the number of detected CTCs. If only patients with more or equal than 10 CTCs are considered, the fraction of PD-L1<sup>(+)</sup> CTCs varied from 0.2 to 50% (**Table 2**). The intensity of PD-L1 staining varied between patients and within the same blood sample. Analyzing samples with multiple CTCs showed that six patients had CTCs with mixed PDL1 phenotypes (immunoscores 1 and 2), whereas homogeneous PDL1 immunoscores were only found in one patient (**Table 2**).

As shown in the **Figure 4B**, we could also easily observe and distinguish PD-L1<sup>(+)</sup> leucocytes next to CTCs positive or not for the expression of PD-L1. Leucocytes express CD45, while CTCs are defined in the CellSearch<sup>®</sup> system as CD45<sup>(-)</sup>.

As negative controls, we tested blood samples from 15 healthy controls and confirmed that none of the samples were positive for CTCs (Data not shown).

#### 4. Discussion

In the present paper, we provide evidence that PD-L1 is frequently expressed on metastatic cells circulating in the blood of HR<sup>(+)</sup>, HER2<sup>(-)</sup> breast cancer patients. To our best knowledge, this is the first report demonstrating the expression of PD-L1 on CTCs in any cancer entity. Detection of CTCs expressing PD-L1 means that the patients harbor metastatic tumor cells that may have the capacity to block the immune system. These cells are potential targets for anti-PDL1 therapies. This information is fundamentally different from the detection of shed PD-L1 in the blood serum or plasma, which provides no information on the cellular source of PD-L1.

The sensitivity, specificity and the dynamic range of the PD-L1 MAb that we chose in our study was determined by Western Blot, flow cytometry and immunocytochemical analyses. We tested different mammary cancer cell lines (i.e., MDA-MB-231, MCF-7 & SKBR3) and as PD-L1 was expressed at variable degrees on SKBR3, we selected it as our positive control for the establishment of our novel assay detecting CTCs expressing PD-L1. We could thus established immunoscores for PD-L1 expression on single SKBR3 cells with this anti-human B7-H1 MAb and then validated these scores on blood samples from patients with a HR<sup>(+)</sup>, HER2<sup>(-)</sup> metastatic breast cancer. This strategy has been adapted from previous reports using the CellSearch<sup>®</sup> system for immunophenotyping of CTCs (Ignatiadis et al., 2011; Riethdorf et al., 2010).

Despite the fact that we only analyzed a limited number of patients, our results clearly showed that PD-L1 is frequently expressed on CTCs. However, the percentage of PD-L1<sup>(+)</sup> CTCs in individual patients varied considerably. In particular, patients with a high percentage of PD-L1<sup>(+)</sup> CTCs should be potential candidate for anti-PD-L1 therapy. The established CTC/PD-L1 assay can be used in further trials



for stratification and monitoring of cancer patients. It should be noted that only EpCAM<sup>(+)</sup> CTCs were analysed, so the real number of PDL1<sup>(+)</sup> CTCs might be even higher. However, we decided to implement the PD-L1 staining into the EpCAM-dependent CellSearch<sup>®</sup> system because it is still the only automated technical platform cleared by the FDA-USA with a remarkable reproducibility.

The present finding has obvious clinical implications. Immune checkpoint regulators such as PD-L1 have become exciting new therapeutic targets leading to long lasting remissions in patients with advanced malignancies (Shin and Ribas, 2015). However, in view of the remarkable costs and the toxicity profiles (in particular during combination therapy) of these therapies, predictive biomarkers that are able to discriminate responders from non-responders are urgently needed. The development of metastasis in breast cancer (and other solid tumors) can take many years and the metastatic cells may differ from the original cells in the operated primary lesion (Goss and Chambers, 2010). Thus, re-staging of metastatic lesion is required to get real-time information on the molecular characteristics of the actual metastatic cells that are the targets of antibody therapy (not the primary tumor). However, biopsies of metastatic lesions are an invasive procedure with considerable side effects depending on the site of metastasis and, moreover, different metastatic sites can have different molecular characteristics (Gerlinger et al., 2012).

As an alternative, we previously introduced a new diagnostic concept called “liquid biopsy” (Alix-Panabieres and Pantel, 2013; Pantel and Alix-Panabieres, 2010). Standardized automated analysis of CTCs for PD-L1 is feasible, as demonstrated in the present investigation. This protocol can be easily expanded to other immune checkpoint molecules and other carcinoma entities. Implementing these liquid biopsy analyses into future clinical trials of checkpoint blockade might not only be useful for

therapy stratification but CTC analyses performed in real-time before and during the course of the therapy will provide, in addition, important information on the development of resistance.

ACCEPTED MANUSCRIPT

## Figure Legends

**Figure 1 – Human B7H1 Detection in direct ELISA with monoclonal anti-human B7-H1.** Antibody: Human B7-H1 monoclonal Ab (R&D systems). Different proteins have been analyzed: recombinant human B7-H1, recombinant human B7-1, recombinant human B7-2, recombinant B7-H2, recombinant human B7-H3, recombinant human B7-H3b, recombinant human B7-H4, recombinant B7-H6, recombinant B7-H7, recombinant human PD-L2 and recombinant mouse B7-H1. The plate was coated with recombinant protein at mass/well cited in the graph. The different concentrations used were: primary Ab (0.5 µg/mL), secondary Ab (goat anti-mouse IgG polyclonal antibody-biotinylated at 1:10,000), enzyme (streptavidin-AP at 1/1000); the substrate was the p-nitrophenyl phosphate. Abbreviations: rh: recombinant human; rm: recombinant mouse.

**Figure 2 – Specificity and sensitivity of the anti-human B7H1 MAb (R&D system).** **A, Determination of the anti-human B7H1 MAb recognition profile on test protein mixtures from the assigned cell lines and tumour entities by Western Blot.** In parallel, the protein recognition pattern for the mouse isotype control was analyzed. For each lane 20 µg of protein was loaded. Both membranes were exposed to the same X-ray films. To investigate the band pattern for the two antibodies, a short X-ray film exposition time (10 sec) and an overexposed X-ray film (4 min) is shown. Alpha Tubulin served as a loading control. **B, Flow cytometry analyses.** SKBR3 and SU-DHL-4 cell lines were incubated with the anti-human B7-H1 MAb-PE (*in red*) and the corresponding isotypic control (IgG1, *in blue*) – The flow cytometer used for all the analyses was the Cyan (Beckman Coulter); **C, Immunocytochemical analyses.** SKBR3 and SU-DHL-4 cells were centrifuged

gently in a Cytospin™ 4 Cytocentrifuge (Thermo Scientific) on standard glass slides after being stained with the anti-human B7-H1-PE MAb and the corresponding isotypic control. DAPI was added on the preparation to stain nuclei in blue. PDL1<sup>(+)</sup> tumor cells are stained in red (Fluorescent microscope Axio Imager.M1 Zeiss, software AxioVision Release 4.6.3. - magnification **X20**). **D, CellSearch® system analyses.** SKBR3 and SU-DHL-4 were analyzed in the CellSearch® system using either the human anti-human B7-H1 MAb-PE or the corresponding isotypic control in the 4<sup>th</sup> channel (PE). **All experiments were repeated 3 times and the figures show representative results.**

**Figure 3 – Detection of PD-L1 expression on SKBR3 cells with the CellSearch® system. A, Single SKBR3 cells with different levels of PD-L1 expression (B7H1<sup>PE</sup> in the 4<sup>th</sup> channel): score 0 (no PD-L1 expression), 1 (weak PD-L1 expression) and 2 (strong PD-L1 expression); B, SKBR3 clusters with different PD-L1 immunoscores.**

**Figure 4 – CTCs expressing various degrees of PD-L1 detected in blood of HR<sup>(+)</sup> HER2<sup>(-)</sup> metastatic breast cancer patients with the CellSearch® system. Representative pictures of CTCs classified by scores 0, 1 and 2 for PD-L1 expression.**

## Acknowledgements

The authors thank Delphine Gueroult for her excellent technical assistance for the CTC detection using the CellSearch<sup>®</sup> system.

This work was supported by the University Medical Centre of Rennes, an ANR-Roche SA grant (TF), the FEDER and the Region Languedoc-Roussillon (GEPETOS project) (CAP), the Kastner Foundation (KP) and the European Research Council Advanced Investigator grant 269081 DISSECT (KP).

## References

- Alix-Panabieres, C., Pantel, K., 2013. Circulating tumor cells: liquid biopsy of cancer. *Clin Chem* 59, 110-118.
- Alix-Panabieres, C., Pantel, K., 2014. Challenges in circulating tumour cell research. *Nat Rev Cancer* 14, 623-631.
- Alix-Panabieres, C., Schwarzenbach, H., Pantel, K., 2012. Circulating tumor cells and circulating tumor DNA. *Annu Rev Med* 63, 199-215.
- Bidard, F.C., Fehm, T., Ignatiadis, M., Smerage, J.B., Alix-Panabieres, C., Janni, W., Messina, C., Paoletti, C., Muller, V., Hayes, D.F., Piccart, M., Pierga, J.Y., 2013. Clinical application of circulating tumor cells in breast cancer: overview of the current interventional trials. *Cancer Metastasis Rev* 32, 179-188.
- Brahmer, J.R., Tykodi, S.S., Chow, L.Q., Hwu, W.J., Topalian, S.L., Hwu, P., Drake, C.G., Camacho, L.H., Kauh, J., Odunsi, K., Pitot, H.C., Hamid, O., Bhatia, S., Martins, R., Eaton, K., Chen, S., Salay, T.M., Alaparthi, S., Grosso, J.F., Korman, A.J., Parker, S.M., Agrawal, S., Goldberg, S.M., Pardoll, D.M., Gupta, A., Wigginton, J.M., 2012. Safety and activity of anti-PD-L1 antibody in patients with advanced cancer. *N Engl J Med* 366, 2455-2465.
- Braun, S., Vogl, F.D., Naume, B., Janni, W., Osborne, M.P., Coombes, R.C., Schlimok, G., Diel, I.J., Gerber, B., Gebauer, G., Pierga, J.Y., Marth, C., Oruzio, D., Wiedswang, G., Solomayer, E.F., Kundt, G., Strobl, B., Fehm, T., Wong, G.Y., Bliss, J., Vincent-Salomon, A., Pantel, K., 2005. A pooled analysis of bone marrow micrometastasis in breast cancer. *N Engl J Med* 353, 793-802.
- Butt, A.Q., Mills, K.H., 2014. Immunosuppressive networks and checkpoints controlling antitumor immunity and their blockade in the development of cancer immunotherapeutics and vaccines. *Oncogene* 33, 4623-4631.
- Chambers, A.F., Groom, A.C., MacDonald, I.C., 2002. Dissemination and growth of cancer cells in metastatic sites. *Nat Rev Cancer* 2, 563-572.
- Chen, D.S., Irving, B.A., Hodi, F.S., 2012. Molecular pathways: next-generation immunotherapy--inhibiting programmed death-ligand 1 and programmed death-1. *Clin Cancer Res* 18, 6580-6587.
- Cristofanilli, M., Budd, G.T., Ellis, M.J., Stopeck, A., Matera, J., Miller, M.C., Reuben, J.M., Doyle, G.V., Allard, W.J., Terstappen, L.W., Hayes, D.F., 2004. Circulating tumor cells, disease progression, and survival in metastatic breast cancer. *N Engl J Med* 351, 781-791.
- Eccles, S.A., Welch, D.R., 2007. Metastasis: recent discoveries and novel treatment strategies. *Lancet* 369, 1742-1757.
- Flatmark, K., Bjornland, K., Johannessen, H.O., Hegstad, E., Rosales, R., Harklau, L., Solhaug, J.H., Faye, R.S., Soreide, O., Fodstad, O., 2002. Immunomagnetic detection of micrometastatic cells in bone marrow of colorectal cancer patients. *Clin Cancer Res* 8, 444-449.
- Gerlinger, M., Rowan, A.J., Horswell, S., Larkin, J., Endesfelder, D., Gronroos, E., Martinez, P., Matthews, N., Stewart, A., Tarpey, P., Varela, I., Phillimore, B., Begum, S., McDonald, N.Q., Butler, A., Jones, D., Raine, K., Latimer, C., Santos, C.R., Nohadani, M., Eklund, A.C., Spencer-Dene, B., Clark, G., Pickering, L., Stamp, G., Gore, M., Szallasi, Z., Downward, J., Futreal, P.A., Swanton, C., 2012. Intratumor heterogeneity and branched evolution revealed by multiregion sequencing. *N Engl J Med* 366, 883-892.

- Goss, P.E., Chambers, A.F., 2010. Does tumour dormancy offer a therapeutic target? *Nat Rev Cancer* 10, 871-877.
- Ignatiadis, M., Rothe, F., Chaboteaux, C., Durbecq, V., Rouas, G., Criscitiello, C., Metallo, J., Kheddoumi, N., Singhal, S.K., Michiels, S., Veys, I., Rossari, J., Larsimont, D., Carly, B., Pestrin, M., Bessi, S., Buxant, F., Liebens, F., Piccart, M., Sotiriou, C., 2011. HER2-positive circulating tumor cells in breast cancer. *PLoS One* 6, e15624.
- Jilaveanu, L.B., Shuch, B., Zito, C.R., Parisi, F., Barr, M., Kluger, Y., Chen, L., Kluger, H.M., 2014. PD-L1 Expression in Clear Cell Renal Cell Carcinoma: An Analysis of Nephrectomy and Sites of Metastases. *Journal of Cancer* 5, 166-172.
- Kang, Y., Pantel, K., 2013. Tumor cell dissemination: emerging biological insights from animal models and cancer patients. *Cancer Cell* 23, 573-581.
- Moore, H.M., Kelly, A.B., Jewell, S.D., McShane, L.M., Clark, D.P., Greenspan, R., Hayes, D.F., Hainaut, P., Kim, P., Mansfield, E., Potapova, O., Riegman, P., Rubinstein, Y., Seijo, E., Somiari, S., Watson, P., Weier, H.U., Zhu, C., Vaught, J., 2011. Biospecimen reporting for improved study quality (BRISQ). *J Proteome Res* 10, 3429-3438.
- Pantel, K., Alix-Panabieres, C., 2010. Circulating tumour cells in cancer patients: challenges and perspectives. *Trends Mol Med* 16, 398-406.
- Pantel, K., Alix-Panabieres, C., 2013. Real-time Liquid Biopsy in Cancer Patients: Fact or Fiction? *Cancer Res* 73, 6384-6388.
- Pantel, K., Brakenhoff, R.H., Brandt, B., 2008. Detection, clinical relevance and specific biological properties of disseminating tumour cells. *Nat Rev Cancer* 8, 329-340.
- Philips, G.K., Atkins, M., 2015. Therapeutic uses of anti-PD-1 and anti-PD-L1 antibodies. *Int Immunol* 27, 39-46.
- Riethdorf, S., Fritsche, H., Mueller, V., Rau, T., Schindlbeck, C., Rack, B., Janni, W., Coith, C., Beck, C., Janicke, F., Jackson, S., Gornet, T., Cristofanilli, M., Pantel, K., 2007. Detection of circulating tumor cells in peripheral blood of patients with metastatic breast cancer: a validation study of the CellSearch system. *Clin Cancer Res* 13, 920-928.
- Riethdorf, S., Muller, V., Zhang, L., Rau, T., Loibl, S., Komor, M., Roller, M., Huober, J., Fehm, T., Schrader, I., Hilfrich, J., Holms, F., Tesch, H., Eidtmann, H., Untch, M., von Minckwitz, G., Pantel, K., 2010. Detection and HER2 Expression of Circulating Tumor Cells: Prospective Monitoring in Breast Cancer Patients Treated in the Neoadjuvant GeparQuattro Trial. *Clin Cancer Res* 16, 2634-2645.
- Rossille, D., Gressier, M., Damotte, D., Maucort-Boulch, D., Pangault, C., Semana, G., Le Guill, S., Haioun, C., Tarte, K., Lamy, T., Milpied, N., Fest, T., 2014. High level of soluble programmed cell death ligand 1 in blood impacts overall survival in aggressive diffuse large B-Cell lymphoma: results from a French multicenter clinical trial. *Leukemia* 28, 2367-2375.
- Shin, D.S., Ribas, A., 2015. The evolution of checkpoint blockade as a cancer therapy: what's here, what's next? *Current opinion in immunology* 33C, 23-35.
- Topalian, S.L., Drake, C.G., Pardoll, D.M., 2012. Targeting the PD-1/B7-H1(PD-L1) pathway to activate anti-tumor immunity. *Current opinion in immunology* 24, 207-212.
- Uhr, J.W., Pantel, K., 2011. Controversies in clinical cancer dormancy. *Proc Natl Acad Sci U S A* 108, 12396-12400.

**Table 1.** BRISQ Checklist summarizing the lifecycle of the Biospecimen in our study. The pre-analytical phase of the lifecycle of the biospecimen includes each stage from patient to distribution. Preanalytical variables are addressed in this BRISQ list.

<b>Data Elements</b>	
<b>Biospecimen type</b>	Whole Blood
<b>Disease status of patients</b>	Metastatic breast cancer patients, Healthy control
<b>Clinical diagnosis of patients</b>	Breast cancer
<b>Pathology diagnosis</b>	HR <sup>+</sup> Her2 <sup>-</sup> Carcinoma
<b>Collection mechanism</b>	Pre-treatment blood draw
<b>Type of stabilization</b>	CellSave Tube, Room temperature
<b>Type of long-term preservation</b>	Fixation, Room temperature (25°C)
<b>Constitutive of preservative</b>	CellSave Tube (Janssen patent)
<b>Storage duration</b>	Up to 96hrs
<b>Shipping temperature</b>	25°C
<b>Composition assessment &amp; selection</b>	Detection of at least one CTC

HR, Hormone Receptor; CTC, Circulating Tumor Cells

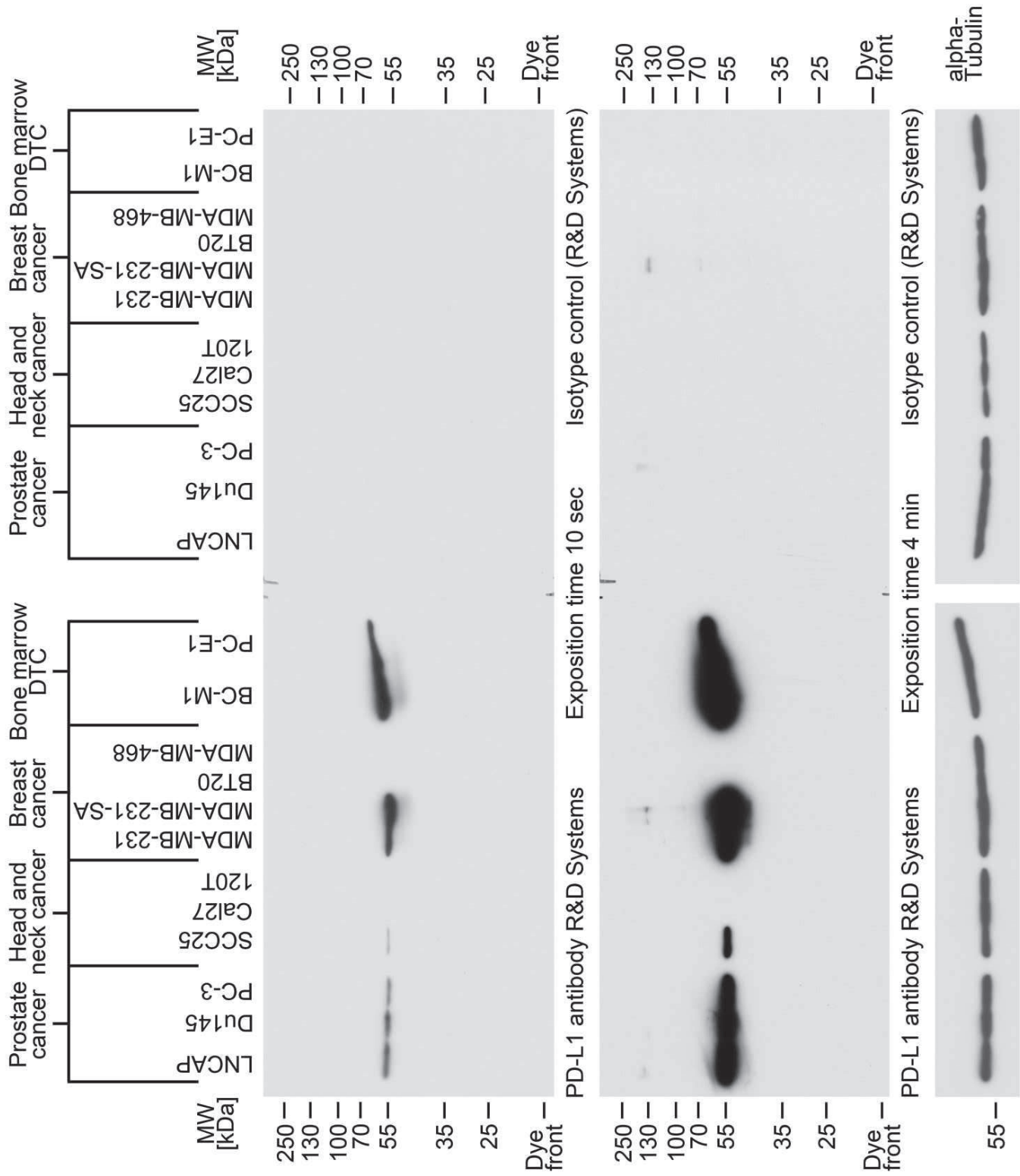


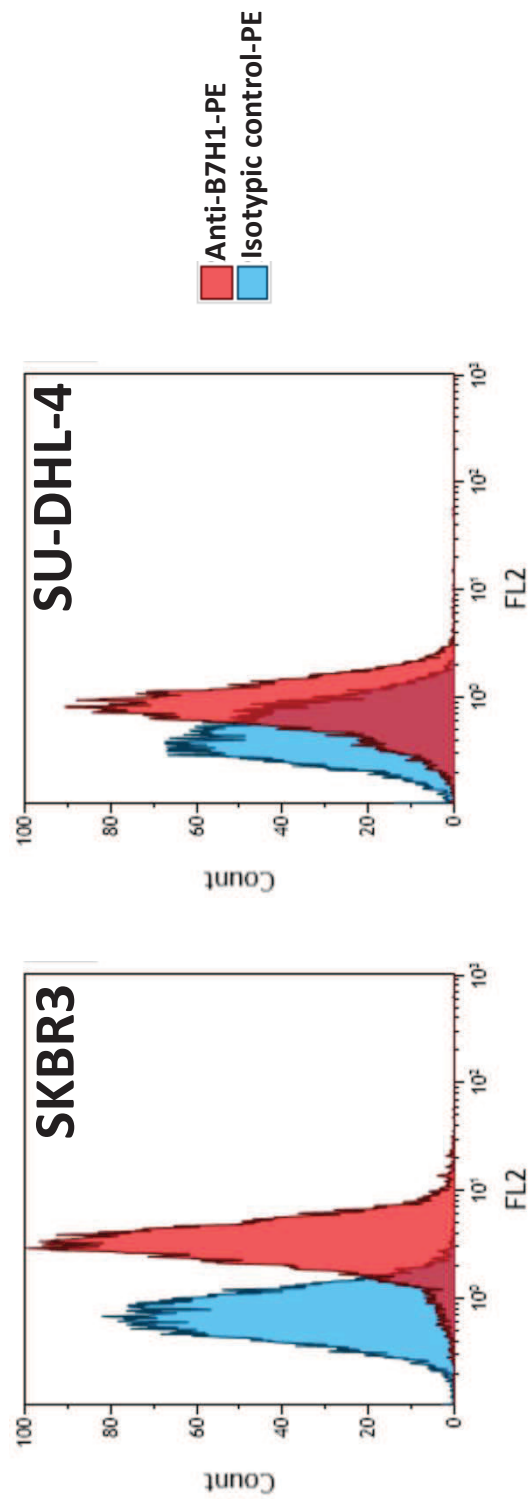
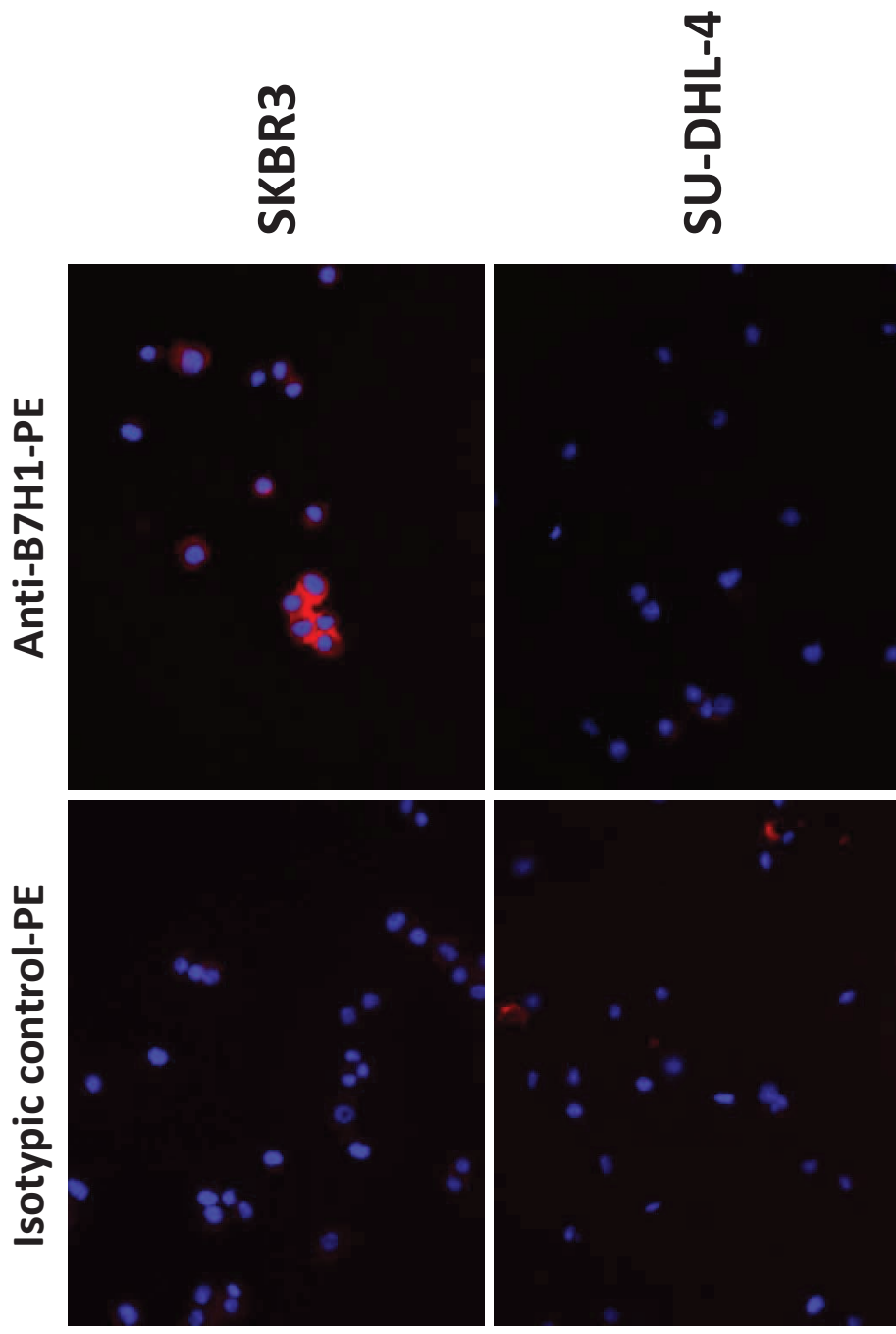
**Table 2. Patients characteristics, CTC detection and PD-L1 expression on CTCs.** CTCs were detected using the CellSearch® CXC Kit and stained for PD-L1 in the 4<sup>th</sup> channel. PD-L1<sup>(+)</sup> CTCs were immunoscored for PD-L1 expression: score 1 (*low PD-L1 expression*) and score 2 (*high PD-L1 expression*).

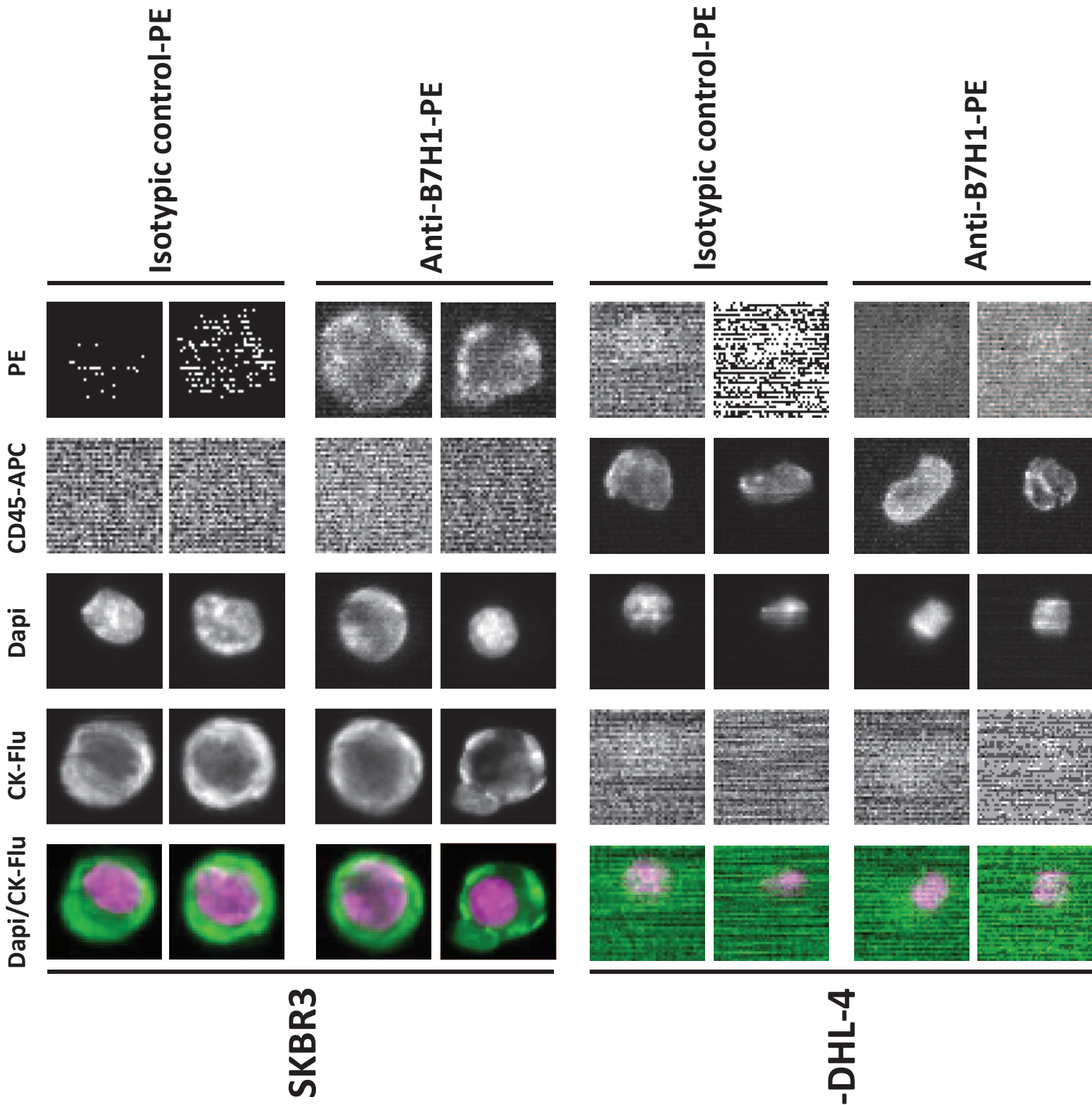
Patient ID	Age	HR Status	HER2 Status	CTCs Total Number	PD-L1 <sup>(+)</sup> CTCs Absolute Number (%)	PD-L1 <sup>(+)</sup> CTCs Immunoscore	
						1	2
1	73	+	-	76	21 (27.6)	10	11
2	69	+	-	10	5 (50)	3	2
3	55	+	-	1	1 (100)	1	0
4	69	+	-	10	5 (50)	5	0
5	74	+	-	27	1 (3.7)	0	1
6	60	+	-	7	3 (42.9)	2	1
7	59	+	-	52	0 (0)		
8	71	+	-	90	10 (11.1)	5	5
9	64	+	-	7	0 (0)		
10	71	+	-	3146	346 (11)	106	240
11	64	+	-	3	0 (0)		
12	48	+	-	9	0 (0)		
13	56	+	-	518	1 (0.2)	0	1
14	46	+	-	93	17 (18.3)	10	7
15	86	+	-	4	0 (0)		
16	61	+	-	27	1 (3.7)	0	1

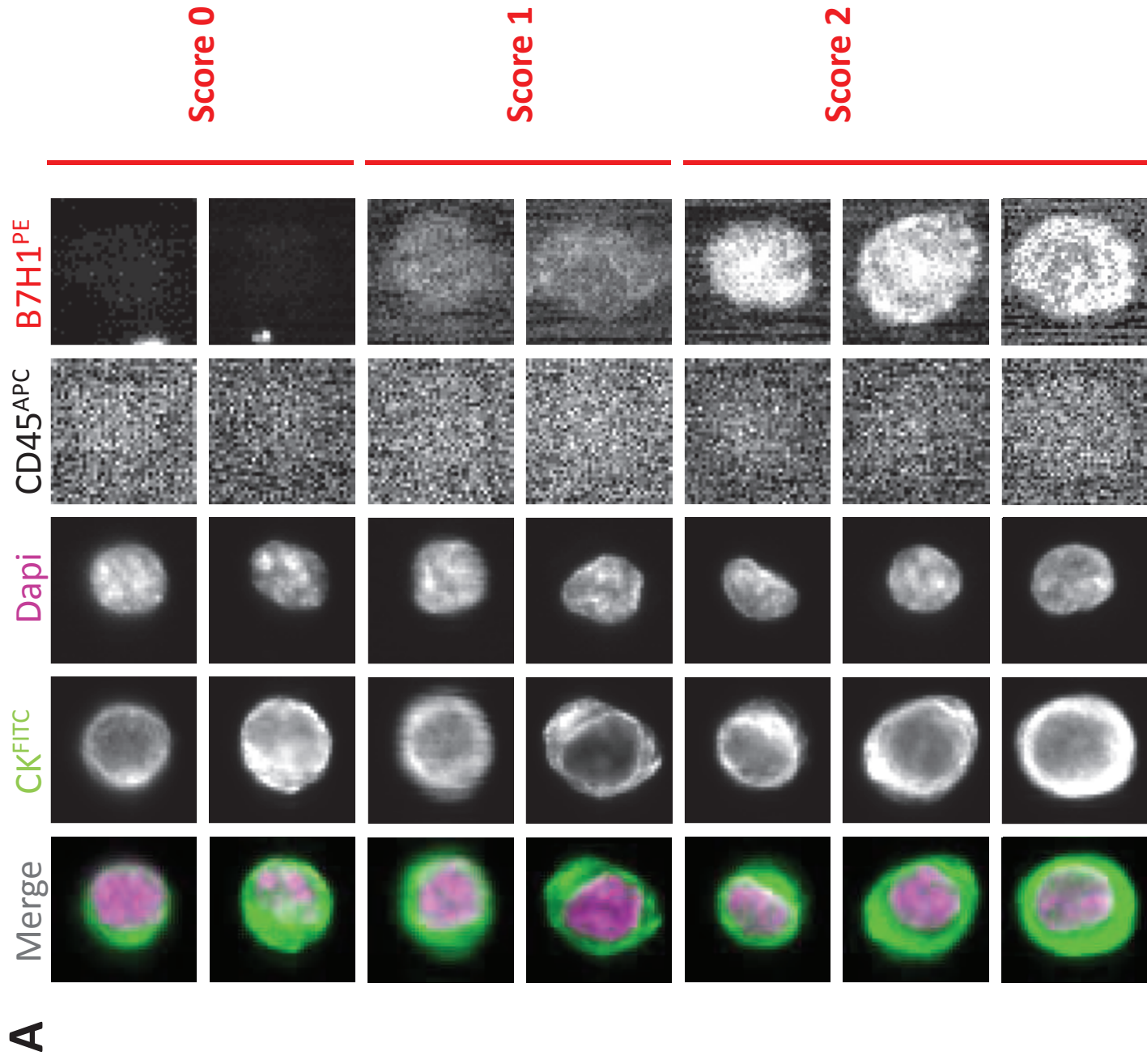


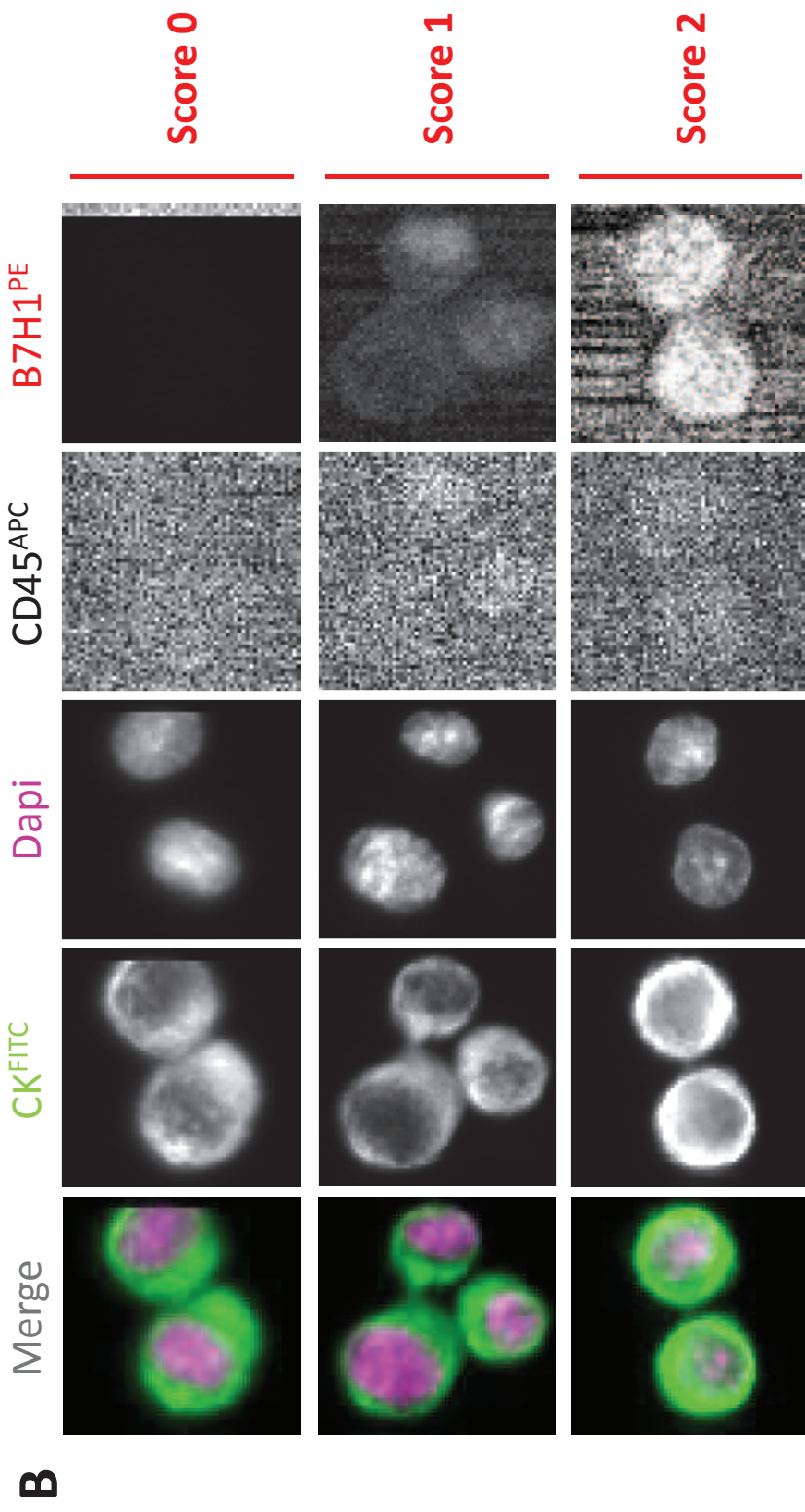
A

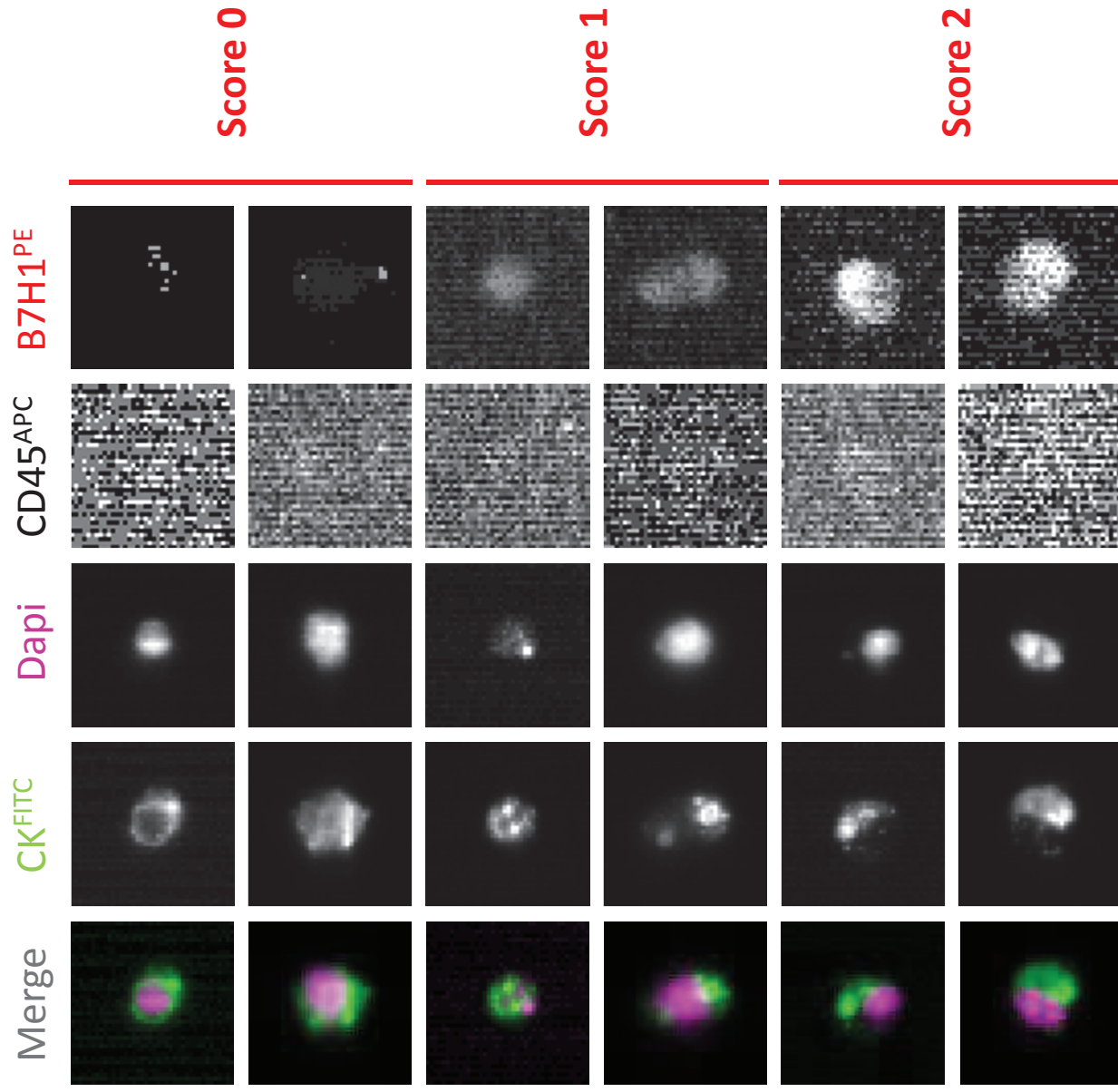


**B****C**

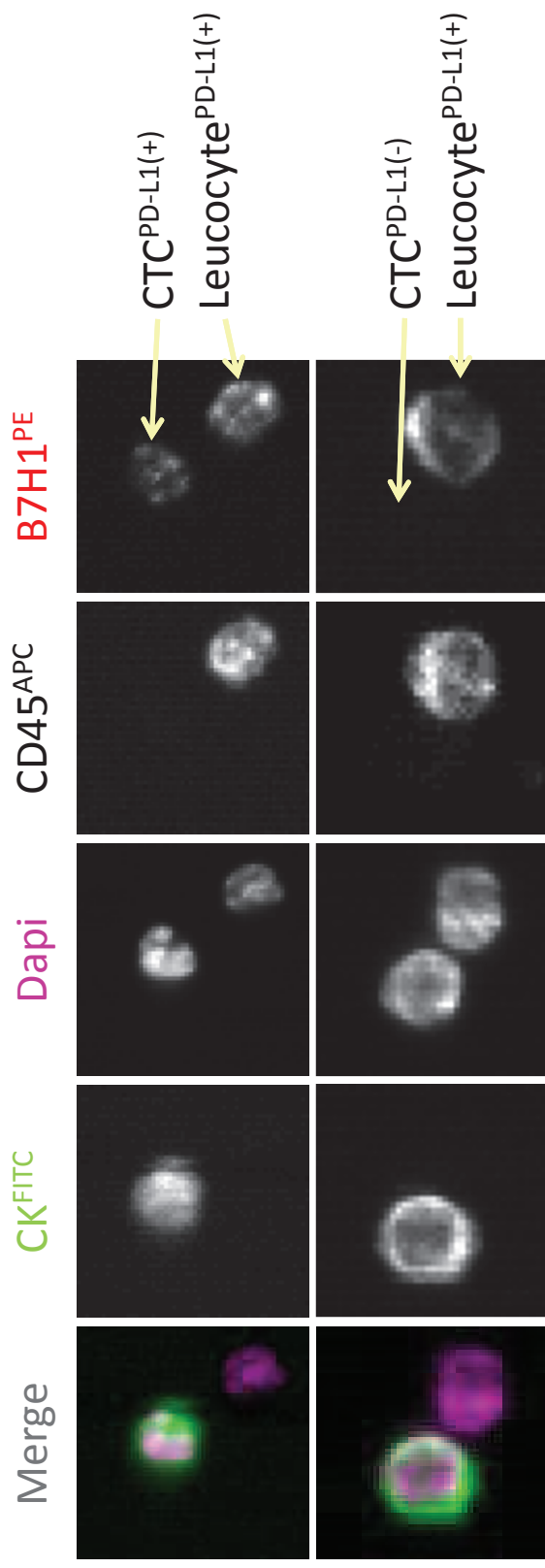
**D**











**HIGHLIGHTS**

- PD-L1 is an immune checkpoint regulator.
- PD-L1 is frequently expressed on metastatic cells circulating in the blood of breast cancer patients.
- We report an established CTC/PD-L1 assay that can be used for liquid biopsy in cancer patients.
- Detection of PD-L1<sup>(+)</sup> CTCs may guide stratification and monitoring of cancer patients undergoing immune checkpoint blockade.