



HAL
open science

SUMOylation of the ING1b tumour suppressor regulates gene transcription.

Shankha Satpathy, Claire Guérillon, Tae-Sun Kim, Nicolas Bigot, Satbir
Thakur, Shirin Bonni, Karl Riabowol, Rémy Pedoux

► **To cite this version:**

Shankha Satpathy, Claire Guérillon, Tae-Sun Kim, Nicolas Bigot, Satbir Thakur, et al.. SUMOylation of the ING1b tumour suppressor regulates gene transcription.. *Carcinogenesis*, 2014, 35 (10), pp.2214-2223. 10.1093/carcin/bgu126 . hal-01006766

HAL Id: hal-01006766

<https://univ-rennes.hal.science/hal-01006766>

Submitted on 16 Jun 2014

HAL is a multi-disciplinary open access archive for the deposit and dissemination of scientific research documents, whether they are published or not. The documents may come from teaching and research institutions in France or abroad, or from public or private research centers.

L'archive ouverte pluridisciplinaire **HAL**, est destinée au dépôt et à la diffusion de documents scientifiques de niveau recherche, publiés ou non, émanant des établissements d'enseignement et de recherche français ou étrangers, des laboratoires publics ou privés.

1
2
3 **Manuscript title : SUMOylation of the ING1b tumour suppressor regulates gene**
4 **transcription**
5
6
7

8 Shankha Satpathy^{1, †}, Claire Guérillon^{2, 3, †}, Tae-sun Kim¹, Nicolas Bigot^{2, 3}, Satbir Thakur¹,
9 Shirin Bonni¹, Karl Riabowol^{1, *, §} and Rémy Pedeux^{2, 3, 4, §}
10
11

12
13 ¹Department of Biochemistry and Molecular Biology, Southern Alberta Cancer Research
14 Institute, Faculty of Medicine, University of Calgary, Calgary, Alberta, Canada.
15

16 ²INSERM U917, Microenvironnement et Cancer, Rennes, France.
17

18 ³Université de Rennes 1, Rennes, France.
19

20 ⁴Etablissement Français du Sang, Rennes, France.
21
22

23
24 † These authors contributed equally
25

26 § These authors contributed equally
27
28

29 * To whom correspondence should be addressed.
30

31 Karl Riabowol
32

33 Email: karl@ucalgary.ca
34

35 Tel: 403-220-8695; Fax: 403-283-8727
36
37
38
39

40 **Running title:** ING1b SUMOylation regulates gene transcription
41
42
43
44
45
46
47
48
49
50
51
52
53
54
55
56
57
58
59
60

Abstract

The INhibitor of Growth (ING) proteins are encoded as multiple isoforms in five *ING* genes (*ING1-5*) and act as type II tumor suppressors. They are growth inhibitory when overexpressed and are frequently mislocalized or down-regulated in several forms of cancer. ING1 and ING2 are stoichiometric members of histone deacetylase (HDAC) complexes while ING3-5 are stoichiometric components of different histone acetyl-transferase (HAT) complexes. The INGs target these complexes to histone marks, thus acting as epigenetic regulators. ING proteins affect angiogenesis, apoptosis, DNA repair, metastasis and senescence, but how the proteins themselves are regulated is not yet clear. Here we find a small ubiquitin like modification (SUMOylation) of the ING1b protein and identify lysine 193 (K193) as the preferred ING1b SUMO acceptor site. We also show that PIAS4 is the E3 SUMO ligase responsible for ING1b SUMOylation on K193. Sequence alignment reveals that the SUMO consensus site on ING1b contains a phosphorylation-dependent SUMOylation motif (PDSM) and our data indicate that the SUMOylation on K193 is enhanced by the S199D phosphomimic mutant. Using an ING1b protein mutated at the major SUMOylation site (ING1b E195A), we further demonstrate that ING1b SUMOylation regulates the binding of ING1b to the *ISG15* and *DGCR8* promoters, consequently regulating *ISG15* and *DGCR8* transcription. These results suggest a role for ING1b SUMOylation in the regulation of gene transcription.

Summary: Here we show that the ING1b tumor suppressor is SUMOylated on lysine 193 by the PIAS4 E3 SUMO ligase. SUMOylation regulates binding of ING1 to the *ISG15* and *DGCR8* promoters, implicating SUMOylation of ING1b in transcriptional regulation. **Keywords:** ING1b, SUMO1, PDSM, *ISG15*, *DGCR8*, PIAS4

Introduction

The first member of the Inhibitor of Growth (ING) family of epigenetic regulators, *ING1b*, was isolated using a technique based on subtractive hybridization followed by an *in vivo* screen for genes with characteristics of tumor suppressors (1). Subsequent analyses revealed loss of *ING1b* expression in 44% of breast cancer tissues and in 10 of 10 breast cancer cell lines examined, further supporting its role as a tumor suppressor (2). Subsequently, four other members of this family, *ING2-5*, were identified by homology search (3-6). Phylogenetic and structural analyses revealed the presence of a highly conserved plant homeodomain (PHD), which binds lysine 4 of histone 3 (H3K4) in a methylation dependent manner with the highest affinity being for H3K4me3 (7,8). *ING1b* is a stoichiometric component of Sin3a-HDAC1/2 complexes (9) and also binds SIRT1 (10). *ING1b* recruits SIRT1 and this interaction results in the inhibition of Sin3a-HDAC mediated transcriptional repression (11). *ING1b* interacts with the Sin3a-HDAC complex through its N-terminus to recruit these complexes onto chromatin to regulate gene transcription. Although *ING1b* and *ING2* function as the targeting modules of the Sin3a-HDAC1/2 complexes, they also play additional roles in the cell through regulating small noncoding RNA expression by regulating RNA processing protein DGCR8 (12) and also interact with the ATP-dependent nucleosome remodeling machinery (9,13).

SUMO belongs to the Ubiquitin like (Ubl) protein family and is conjugated to target proteins on lysine residues. The SUMO protein family is comprised of SUMO1-4, which have molecular weights of ~12KDa. SUMO2, 3 and 4 are almost identical, however, SUMO1 shares only ~50% identity with other SUMO family members. SUMO proteins are translated in a precursor form. SUMO-specific proteases cleave the precursor SUMO protein into a mature form with a di-glycine motif on its C-terminus, which eventually gets conjugated to the lysine residue of target proteins. Mature SUMO is conjugated to target proteins in three steps:

1
2
3
4 i) Activation where a thioester bond is formed between SUMO and a cysteine residue of
5 Uba2 by a heterodimer containing E1 activation enzymes Aos1 and Uba2; ii) Conjugation,
6 where Uba2-SUMO transfers SUMO to Ubc9, the only known SUMO E2 conjugation protein.
7
8 A thioester bond is formed between the C-terminal GG motif of SUMO and cysteine 93 of
9 Ubc9. Ubc9-SUMO then interacts with and transfers SUMO to protein substrates (14). One
10
11
12
13
14
15
16
17
18
19
20
21
22
23
24
25
26
27
28
29
30
31
32
33
34
35
36
37
38
39
40
41
42
43
44
45
46
47
48
49
50
51
52
53
54
55
56
57
58
59
60

consensus site for SUMOylation contains a hydrophobic amino acid (ψ), a lysine for SUMO conjugation (K) and an acidic amino acid (E/D) on its 1st, 2nd or 4th position (ψ KXE/D where X is any amino acid); iii) Ligation, the final step. Transferring SUMO to target proteins is often stabilized or facilitated by another class of proteins, the SUMO E3 Ligases. Unlike E1 and E2 enzymes, there are many SUMO E3 ligases. SUMOylation can result in disruption of protein-protein interactions, promote protein-protein interactions or result in structural changes. SUMOylation of transcription factors and chromatin remodeling proteins has often been linked to gene repression (15), and in a few instances, to gene activation (16) loss of repression (17).

Although roles for several of the ING proteins have been described in diverse cellular processes (18) few reports exist describing regulation of the INGs by post-translational modifications (PTMs) (19-23). Exceptions to this are for the role of ING1b phosphorylation at two different serine residues; serine 126, which affects protein stability (23) and serine 199, which affects subcellular localization (24). Also, src mediated ING1b phosphorylation affects protein stability and ING1b levels (19), ING2 SUMOylation mediates ING2-Sin3a interaction (21) and ING4 citrullination affects ING4-p53 interactions (22). In this study we find that ING1b is SUMOylated mainly on lysine 193 and that this is catalyzed by the E3 SUMO ligase PIAS4 PIAS4 and E2 SUMO ligase Ubc9 . We also find that ING1b SUMOylation regulates the promoter occupancy and expression of the *ISG15* and *DGCR8* genes.

Materials and Methods

Cell culture and transfection.

Immortalized human osteosarcoma cells (U2OS) and human embryonic kidney cells (HEK-293) were obtained from the American Type Culture Collection (ATCC). U2OS and HEK-293 cells were grown in high glucose Dulbecco's modified Eagle's medium (DMEM) supplemented with 10% fetal bovine serum. PEI (Sigma) and Lipofectamine LTX (Invitrogen) reagents were used to transfect plasmids into HEK293 cells and U2OS cells respectively.

Plasmids.

The ING1b mutants, ING1b K193R, ING1b E195A, ING1b S199D, ING1b S199A were generated with a QuickChange II Site-Directed Mutagenesis Kit (Stratagene, La Jolla, CA, USA) from pcDNA3.1-ING1b. The primers were: 5'-AGCGCTCCAAGGCCAGGGCGGAGC-3' (sense) and 5'-GCTCCGCCCTGGCCTTGGAGCGCT-3' (antisense) for ING1b K193R; 5'-GGCCAAGGCGGGCGCGAGAGGCGT-3' (sense) and 5'-ACGCCTCTCGCGCCGCCTTGGCC-3' (antisense) for ING1b E195A; 5'-GGAGCGAGAGGGCGGACCCTGCCGACCTC-3' (sense), and 5'-GAGGTCGGCAGGGTCCGCCTCTCGCTCC-3' (antisense) for ING1b S199D and 5'-AGCGAGAGGGCGGCCCTGCCGAC-3' (sense), 5'-GTCGGCAGGGGCGCCTCTCGCT-3' (antisense) for ING1b S199A. All mutated ING1b constructs were verified by sequencing. HA/SUMO1, HA/UBC9, HA/UBC9CS, FLAG/PIAS1, 2, 3, 4, FLAG/SUMO1, FLAG/ING1b have been described elsewhere (25).

Western-blotting and Immunoprecipitation.

Cell lysis buffer (20 mM Tris-HCl (pH 7.5), 150 mM NaCl, 1 mM Na₂EDTA, 1 mM EGTA, 1% Triton, 2.5 mM sodium pyrophosphate, 1 mM beta-glycerophosphate, 1 mM Na₃VO₄, 1 µg/ml leupeptin) or RIPA (20mM Tris-HCl, pH 7.5, 100mM NaCl, 5mM KCl, 1mM EDTA, 0.25%

1
2
3
4 deoxycholate, 0.25% Nonidet P-40, 0.25% Tween-20) containing EDTA free protease tablets
5
6 (Roche Diagnostics) and 1mM PMSF was used for protein extraction and
7
8 immunoprecipitation, respectively. Modified RIPA buffer containing 0.1% SDS and 20mM
9
10 NEM was used for immunoprecipitation of SUMOylated proteins under denaturing conditions.
11
12 Antibodies were α ING1 (26), α HA (Covance), α FLAG (Sigma), α PIAS4, α SIN3a and α ACTIN
13
14 (SCBT). For affinity purification of HA or FLAG tagged SUMO conjugated proteins, α HA
15
16 affinity matrix (Roche) and anti-FLAG M2 affinity resin (Sigma) were used. For densitometry
17
18 analysis of western blot bands, Image J (<http://imagej.nih.gov/ij/>) software was used and
19
20 graphs were drawn using Graphpad Prism.
21
22
23

24 *Indirect immunofluorescence.*

25
26 Transfection of cells was performed with cells plated on glass coverslips. 24 hours after
27
28 transfection immunofluorescence was performed as reported previously. For immunostaining,
29
30 an undiluted mixture of ING1 monoclonal antibodies (Cabs) (26) was used as primary
31
32 antibody and images were visualized using a Leica SP8 immunofluorescence microscope.
33
34
35

36 *RNA extraction and real time-PCR analysis.*

37
38 Total RNA from cells was isolated using RNAeasy kits (Qiagen, USA), and 1 μ g of total RNA
39
40 was transcribed into cDNA using a First-Strand kit (Applied Biosystems, USA). Real-time
41
42 PCR was carried out with qPCR MasterMix Plus for SYBR Green (Fermentas) using the
43
44 company's standard manual procedure. The primers used for real-time measurement of PCR
45
46 were as follows: *GAPDH*, 5'-GTCAGTGGTGGACCTGACCT-3' and 5'-
47
48 TGAGCTTGACAAAGTGGTCG-3'; *ING1b*, 5'-CAACAACGAGAACCGTGAGA-3' and 5'-
49
50 GAGACCTGGTTGCACAGACA-3'; *ISG15*, 5'-ACTCATCTTTGCCAGTACAGGAG-3' and 5'-
51
52 CAGCATCTTCACCGTCAGGTC-3' and *DGCR8* are 5'-TGG-AGT-ATG-CAG-TGC-TCG-
53
54 ATG-3' and 5'-GGC-TGC-CAA-CAT-ACC-TCG-TA-3'. The expression of each gene was
55
56
57
58
59
60

1
2
3
4 normalized using *GAPDH* mRNA as an internal control. The relative amounts of each product
5
6 were calculated using the comparative CT ($2^{-\Delta\Delta CT}$) method described in the ABI 7900HT Fast
7
8 Real-time PCR System (Applied Biosystems, USA). Results represent differences in *ISG15*
9
10 and *DGCR8* relative to *ING1b* expression.
11

12 *Chromatin immunoprecipitation.*

13
14
15 ChIP was performed using the EpiTect ChIP OneDay Kit (Qiagen, Courtaboeuf, France)
16
17 following manufacturer's instructions. Briefly, the crosslinking was performed using 1%
18
19 formaldehyde solution in PBS. Before the immunoprecipitation, 1% of each input fraction was
20
21 saved and used in blots as a positive control. The supernatant was immunoprecipitated with
22
23 either anti-ING1 or anti-mouse IgG as a negative control at 4°C for 4 hours. Then, a mixture
24
25 of protein A/G agarose beads (Santa Cruz Biotechnology) was added and incubated at 4°C
26
27 for 1 hour. DNA samples were then subjected to Q-PCR, and results were analyzed
28
29 according to the manufacturer's instructions. The differential occupancy results were
30
31 calculated by the normalization of the immunoprecipitation differences ($\Delta\Delta Ct$: $\Delta Ct[IP: \text{treated}$
32
33 $\text{sample}] - \Delta Ct[IP: \text{control sample}]$). The fold changes in *ISG15* or *DGCR8* promoter occupancy
34
35 were calculated following the $2^{-\Delta\Delta Ct}$ method. Primer sequences spanning the upstream
36
37 region of *ISG15* are 5'-AGCATCTCACTGGGGTTTT-3' and 5'-
38
39 CTGATGAGGGCATAGCATCC-3' and *DGCR8* are 5'-GACTCTCGTCGCTGTCCG-3' and 5'-
40
41 ACACCTTTCCCGCCTGAAG-3'.
42
43
44
45
46
47
48
49

50 **Results**

51 *ING1b is modified by SUMO1.*

52
53
54
55 ING1 serves as the targeting component of HDAC complexes and contributes to regulating
56
57 gene transcription via effects on the histone code. However, the mechanism by which ING1
58
59
60

1
2
3
4 activation or participation in the complex is regulated is not clear. Regulation of a gene or its
5
6 product can occur through transcriptional or translational regulation, or by post-translational
7
8 modifications (PTMs). Indeed, SUMOylation of ING2 was recently reported to increase its
9
10 occupancy in the Sin3a-HDAC1 complex (21). To test whether ING1b was similarly modified,
11
12 it was co-expressed with increasing amounts of HA/SUMO1 plasmid in HEK293 cells. As
13
14 shown in Figure 1A, denaturing immunoprecipitation (IP) with α ING1 followed by
15
16 immunoblotting (IB) with α HA revealed an HA reactive band ~20 kDa higher than unmodified
17
18 ING1b. To determine if ING1b was also SUMOylated in another cell type, HA/SUMO1 was
19
20 expressed alone or with ING1b expressing plasmid in U2OS cells. As shown in Figure 1B
21
22 and supplemental Figure S1A, SUMOylated ING1b migrated at ~55 kDa on 10% SDS-PAGE.
23
24 This is consistent with reports (27) indicating a shift of 15-20 kDa with the addition of a single
25
26 SUMO1 moiety and suggests that ING1b is primarily mono-SUMOylated in different cell
27
28 types. To further investigate if endogenous ING1b was modified by SUMO1, U2OS cell
29
30 lysates, with or without expression of HA/SUMO1, were subjected to IP to detect endogenous
31
32 sumoylated ING1b. As shown in Figure 1C, modified endogenous ING1b migrated at ~55
33
34 kDa, consistent with the size of mono-SUMOylated ING1b protein. As shown in Figure S1B
35
36 and S1C, the ING1b antibody recognized both the unmodified and modified forms of ING1b
37
38 with high specificity. To better understand the mechanism by which ING1b was SUMOylated,
39
40 lysates from cells overexpressing ING1b, HA/SUMO1 and HA/Ubc9 wild type (HA/Ubc9 WT)
41
42 were immunoprecipitated with α ING1. As shown in Figure 1D and supplemental Figure S2A,
43
44 Ubc9 enhanced ING1b SUMOylation in a dose-dependent manner. The cysteine residue on
45
46 the 93rd amino acid position of Ubc9 is known to facilitate SUMO conjugation (28), and thus
47
48 mutation of this cysteine residue to a serine (Ubc9CS) abrogates its conjugation activity. As
49
50 shown in Figure 1D, expression of HA/Ubc9CS blocked ING1b SUMOylation, suggesting that
51
52
53
54
55
56
57
58
59
60

1
2
3
4 it can act in a dominant negative fashion. In the absence of N-Ethylmaleimide (NEM), a
5
6 SUMO iso-peptidase inhibitor, the HA-reactive band was lost, confirming that it is indeed a
7
8 SUMOylated protein. Furthermore, as shown in **Figure S2C**, we also observed an interaction
9
10 between flag tagged ING1b and endogenous Ubc9.
11

12
13 SUMOylation is a transient PTM and at steady state, only a very small fraction (1-2%)
14
15 of proteins are SUMOylated (27). SUMO is cleaved from proteins by SUMO specific iso-
16
17 peptidases. Of the 6 described major de-SUMOylation enzymes (SEN1,2,3,5,6,7) SEN1
18
19 and SEN2 target both SUMO1 and SUMO2, whereas other SENPs prefer SUMO2 and/or
20
21 SUMO3. SEN1 and SEN2 localize in nuclear pores and are found in the nucleoplasm as
22
23 nuclear speckles (29). SEN3 and SEN5 localize in the nucleolus and SEN6 and SEN7
24
25 primarily localize in the nucleoplasm (29). Given that ING1b is primarily nuclear and is
26
27 modified by SUMO1, we examined if SEN1 and 2 regulated ING1b SUMOylation. As shown
28
29 in Figure 1E, overexpression of Flag tagged SEN1 or SEN2 efficiently de-SUMOylated
30
31 ING1b, further suggesting its role in the ING1b SUMOylation pathway. Together, these data
32
33 suggest that ING1b is SUMOylated by SUMO1 in an Ubc9-dependent manner and is de-
34
35 SUMOylated by both SEN1 and SEN2 SUMO-specific iso-peptidases.
36
37
38
39
40
41
42
43
44

45
46 *ING1b is SUMOylated by the PIAS4 SUMO E3 ligase.*

47
48 SUMO substrate specificity is regulated by many different SUMO E3 ligases. Although SUMO
49
50 E3 ligases are dispensable for SUMOylation *in vitro* where the presence of E1 activation
51
52 enzyme and E2 conjugation enzyme is sufficient for the transfer of SUMO, SUMO E3 ligases
53
54 fulfill critical roles in many biological pathways (27). The PIAS (Protein inhibitor of Activated
55
56 STAT Protein) family is the most widely characterized group of E3 SUMO ligases, facilitating
57
58 SUMOylation of a variety of chromatin regulators, transcription factors and tumor
59
60

1
2
3
4 suppressors. These proteins localize primarily to the nucleus and therefore nuclear proteins
5
6 are believed to be their major substrates. PIAS1 and PIAS4 have been reported to be
7
8 involved in SUMOylation of proteins involved in the DNA damage response (30). Given that
9
10 ING1b function in response to one or more types of DNA damage (31,32), and in related stress
11
12 pathways like senescence and apoptosis where PIAS proteins are known to be involved
13
14 (30,33), we asked if one or more of the PIAS proteins might act as SUMO E3 ligases for
15
16 ING1b. ING1b was co-expressed with FLAG tagged PIAS1, PIAS2 α , PIAS3 and PIAS4, and
17
18 α -FLAG IPs were performed followed by immunoblotting with α ING1. As shown in Figure 2A,
19
20 only PIAS3 and PIAS4 immunoprecipitated ING1b. Therefore, we next investigated the
21
22 involvement of PIAS3 and PIAS4 in ING1b SUMOylation. We co-expressed ING1b,
23
24 HA/SUMO1 and HA/Ubc9 with or without FLAG tagged PIAS3 or PIAS4. HEK293 cell lysates
25
26 were then subjected to ING1b IP. As shown in Figure 2B, PIAS4 enhanced ING1b
27
28 SUMOylation. In contrast, PIAS3, which also interacted strongly with ING1b, had a negative
29
30 effect on ING1b SUMOylation. Consequently, we asked whether PIAS3 acted in a dominant
31
32 negative manner, competing with PIAS4 and blocking its ability to SUMOylate ING1b. We co-
33
34 expressed ING1b, HA/SUMO1 and HA/Ubc9 with FLAG/PIAS4, with PIAS3 or with both, in
35
36 both U20S and in HEK293 cells. As shown in Figure 2C and supplemental Figure S3, PIAS4
37
38 enhanced ING1b SUMOylation. However, co-expression of PIAS3 with PIAS4 inhibited
39
40 PIAS4 mediated ING1b SUMOylation to levels similar to those seen in the absence of
41
42 exogenous PIAS4. As shown in Figure 2D, a physical interaction occurs between
43
44 endogenous ING1b and PIAS4, further supporting the idea that PIAS4 functions as a major
45
46 SUMO1 E3 ligase for ING1b.
47
48
49
50
51
52
53

54
55 *Lysine 193 is the major SUMO1 acceptor on ING1b.*
56
57

58 SUMO1 is often conjugated to a short consensus sequence consisting of Ψ KXD/E where Ψ
59
60

1
2
3 is a hydrophobic residue and X is any amino acid. The SUMO consensus motifs (Ψ KXD/E)
4 serve as recognition modules enabling Ubc9 to interact with target proteins. Lysine within this
5 module serves as the SUMO acceptor site and the acidic amino acid residue is important for
6 Ubc9 interaction (14). Bioinformatics analysis using the SUMOplot program
7 (<http://www.abgent.com/sumoplot>) confirmed the presence of three SUMO consensus motifs
8 within ING1b, however, sequence conservation analysis using the ClustalW program
9 (<http://www.ebi.ac.uk/Tools/msa/clustalw2/>) revealed that the motif containing lysine 193
10 (Figure 3A) was the highest scoring SUMO consensus motif and was highly conserved
11 between human, mouse, rat and other vertebrates (Figure 3B). To test if lysine 193 was the
12 major SUMO acceptor on ING1b, lysine 193 was mutated to arginine, another basic amino
13 acid but one that could not be SUMOylated (ING1b K193R). ING1b and ING1b K193R were
14 co-expressed with HA/SUMO1 in HEK293 cells and were subjected to denaturing ING1 IP.
15 As observed in Figure 3C, SUMO1 was not conjugated onto the ING1b K193R mutant
16 suggesting that lysine 193 was the major ING1b SUMO acceptor site, or perhaps the only
17 one. Lysine 193 on ING1b could be the target of a multitude of different lysine specific PTMs
18 like acetylation, ubiquitination, methylation and other modifications that could interfere with
19 our analysis of SUMOylation. Therefore, we mutated the glutamic acid residue at position 195
20 to alanine (ING1b E195A), a manipulation that is predicted to only influence SUMOylation
21 (14). This disrupts the sumoylation consensus motif and thus should selectively prevent
22 SUMOylation, but not other modifications on K193. As shown in Figure 3D, consistent with
23 Ψ KXD/E being the SUMO consensus site and also being important for Ubc9 and target
24 protein interaction, site directed mutagenesis of glutamic acid 195 strongly inhibited, but did
25 not totally abrogate SUMOylation.

26
27
28
29
30
31
32
33
34
35
36
37
38
39
40
41
42
43
44
45
46
47
48
49
50
51
52
53
54
55
56
57
58
59
60
ING1b K193 is also a PDSM.

1
2
3
4 The phosphorylation dependent SUMOylation motif (PDSM) contains a SUMOylation target
5 residue governed by the phosphorylation of a serine residue downstream. The consensus
6 PDSM is of the sequence Ψ KXEXXSP where Ψ KXD/E is the SUMO consensus motif and the
7 downstream serine is the phospho-acceptor residue (34). ING1b possesses the sequence
8 AK(193)XE(195)REAS(199)P that is very similar to a PDSM and contains the target K193
9 residue. The ING1b PDSM is well conserved within vertebrates and lies between the NLS
10 and PHD of ING1b as indicated in Figure 4A. The PDSM in ING1b overlaps with its 14-3-3
11 binding motif and 14-3-3 binding to ING1b is dependent on the phosphorylation status of
12 serine 199 (24). To test whether phosphorylation of ING1b on this site affected its
13 sumoylation, mutagenesis was performed to mutate serine 199 to glutamic acid (ING1
14 S199D) which should serve as a phosphomimic. As presented in Figure 4B, denaturing α HA
15 IPs of cell lysates expressing ING1b WT or ING1b S199D and HA/SUMO1, showed that the
16 S199D phosphomimic mutant showed a significant increase in ING1b SUMOylation,
17 suggesting that phosphorylation of S199 promotes SUMOylation of K193. However, we saw
18 no difference in ING1b SUMOylation when the serine was mutated to alanine as shown in
19 supplementary figure S4A.

20
21
22
23
24
25
26
27
28
29
30
31
32
33
34
35
36
37
38
39
40
41 *ING1 SUMOylation does not alter its subcellular localization.*

42
43 SUMOylation has been widely linked to protein relocalization. Attachment of a SUMO moiety
44 can influence translocation or recruitment of proteins to different sub-cellular compartments
45 or to macromolecular protein complexes. Consequently sumoylation could alter the
46 interaction of ING1b with transport machinery proteins such as 14-3-3 η (24). To test whether
47 ING1b SUMOylation affected its localization, we transfected cells with ING1b, ING1b K193R
48 or ING1b E195A and performed indirect immunofluorescence. As shown in Figure 5A, ING1b
49 WT and SUMOylation deficient mutants ING1b K193R and ING1b E195A localized similarly
50
51
52
53
54
55
56
57
58
59
60

1
2
3
4 in the nucleus, suggesting that there was no significant role for SUMOylation in subcellular
5
6 relocalization under unstressed conditions. However, ING1b binds to chromatin and plays a
7
8 role in apoptosis in response to exogenous stress (7,35,36). To ask if SUMOylation of ING1b
9
10 affected chromatin binding, we performed experiments with ING1b WT, ING1b K193R and
11
12 ING1b E195A. We purified a chromatin-enriched fraction (CEF) from cells transfected with
13
14 ING1b WT or the mutants and probed for chromatin bound ING1b. The E195A or K193R
15
16 mutants did not appear to bind chromatin markedly differentially compared to ING1b WT as
17
18 shown in Figure 5B.
19
20

21
22 *SUMOylation of ING1b regulates its recruitment to the ISG15 and DGCR8 promoters.*
23

24
25 ING1 affects gene expression by regulating the acetylation status of core histones on the
26
27 promoters of genes such as *DGCR8*, *ITSN1*, and *mi204a* among others (12,37,38). To test
28
29 the role of ING1b SUMOylation on its ability to regulate transcription, we performed q-PCR on
30
31 12 different ING1b target genes recently identified in a microarray screen (unpublished data
32
33 in preparation) and *DGCR8*, a previously identified ING1b target (12). Among the 13 genes
34
35 examined, we found that ING1b SUMOylation reproducibly affected the expression of only
36
37 two genes, *ISG15*, which codes for the ubiquitin like protein *ISG15* and *DGCR8*, which codes
38
39 for a protein involved in microRNA processing (39). As shown in Figure 6A, overexpression of
40
41 wild-type ING1b repressed the expression of *ISG15* & *DGCR8*. Interestingly, SUMOylation-
42
43 resistant mutant ING1b E195A regulated their transcription differently. ING1b E195A did not
44
45 repress *ISG15* while it was more effective in *DGCR8* repression. To further understand how
46
47 ING1b SUMOylation could regulate *ISG15* and *DGCR8* transcription, we further analysed
48
49 ING1b binding on their promoters by chromatin-immunoprecipitations (ChIP). Lysates from
50
51 cells transfected with either an empty vector, ING1b WT or ING1b E195A were subjected to
52
53 ChIP. As illustrated in Figure S7, IgG was used as a negative control. Our data showed that
54
55
56
57
58
59
60

1
2
3
4 the SUMOylation defective mutant ING1b E195A, bound more avidly compared to the ING1b
5
6 WT for both of these genes. However, ING1b E195A failed to repress *ISG15* expression,
7
8 while ING1b E195A repressed *DGCR8* more efficiently. Given that ING1b is a stoichiometric
9
10 member of Sin3a/HDAC complexes, we tested if SUMOylation influenced its interaction with
11
12 this complex. As shown in supplemental Figure S5, unlike ING2, ING1b SUMOylation did not
13
14 appear to affect its interaction with Sin3a. Collectively, our results indicate that SUMOylation
15
16 of ING1b can have different roles based on which promoter it binds to. Our data are
17
18 consistent with several reports suggesting a role for SUMOylation in regulating gene
19
20 expression (15,25,37,40).
21
22
23
24
25
26

27 Discussion

28
29 The roles of the ING protein family in multiple cellular processes are being widely
30
31 investigated by many groups. However, how ING proteins are themselves regulated has
32
33 received very little attention. INGs have been classified as type II tumor suppressors because
34
35 they are often down-regulated or mislocalized, but not frequently mutated in cancers (41).
36
37 High throughput proteomic analyses have identified several different types of post-
38
39 translational modifications on all of the INGs (20) and understanding the significance of those
40
41 modifications could substantially add to our understanding of how members of the ING family
42
43 affect several biological processes. In this study, we report that SUMOylation of ING1b
44
45 occurs at K193 and is mediated by the SUMO E2 conjugation enzyme Ubc9 and SUMO E3
46
47 ligase PIAS4. Our data also indicate that ING1b is modified by SUMO1. ING1b modified by
48
49 SUMO1 migrates at 55KDa, which is consistent with other studies reporting an electrophoretic
50
51 shift of ~20 KDa (27) upon conjugation of one SUMO moiety.
52
53
54
55
56
57

58 ING1b contains at least 6 recognizable domains (8) and although the ING1b SUMO
59
60

1
2
3
4 consensus lysine is the penultimate amino acid within the NLS, its SUMOylation did not
5
6 significantly affect ING1b subcellular localization. This does not exclude the possibility of
7
8 SUMO mediated ING1b relocalization under stress conditions. We also identified a novel
9
10 PDSM within ING1b. The PDSM was first identified as Ψ KxExxSP in HSF1, HSF4b, GATA1
11
12 and MEF2A and was predicted to occur in many other proteins (34). In this study, we show
13
14 that the sequence AK(193)AE(195)REAS(199)P in ING1b acts as a PDSM. We previously
15
16 reported that S199 is phosphorylated and that this affects binding to 14-3-3 η , regulating
17
18 ING1b shuttling from the nucleus to the cytoplasm (24). However, under unstressed
19
20 conditions ING1b SUMOylation did not modify its subcellular localization. ING1b sumoylation
21
22 might thus have little effect on its binding to 14-3-3 η and consequently no effect on its
23
24 localization. Interestingly, a PDSM is also conserved in ING2. Serine 201 within the ING2
25
26 PDSM is likely to be involved in crosstalk with ING2 SUMOylation at the K197 residue (21)
27
28 and preliminary experiments suggests that this is also regulated in a similar manner to that of
29
30 ING1b (data not shown). This may be relevant to the biological functions of ING1b and ING2
31
32 since they are both stoichiometric members of HDAC complexes (9).
33
34
35
36
37
38

39 ING1b interacts with SUMO E2 conjugation enzyme Ubc9 and SUMO E3 ligase PIAS3
40
41 & PIAS4. Ubc9 affected ING1b SUMOylation in a dose dependent manner however, among
42
43 the two interacting PIAS proteins, only PIAS4 mediated ING1b sumoylation. This is of
44
45 particular interest since a role for PIAS4 was found in the DNA damage response (30). PIAS4
46
47 mediates SUMO1 conjugation to a variety of different DNA damage repair proteins unlike
48
49 PIAS1, which mediates SUMO2/3 conjugation. These observations suggest that PIAS4 may
50
51 have a selective function during the DNA damage response or other forms of genomic
52
53 instabilities such as UV-mediated stress response or replication stress, in which ING1b has
54
55 been implicated by numerous studies. For example, ING1b association with the PCNA
56
57
58
59
60

1
2
3
4 component of DNA repair complexes increases by >10 fold in response to UV-induced DNA
5
6 damage, and binding occurs through a PCNA-interacting protein (PIP) motif found in ING1b
7
8 (35). An ability to affect DNA repair in immortalized cells was also seen in an independent
9
10 study (42). ING1b was also recently reported to affect genomic stability during replication (43)
11
12 and thus PIAS4 mediated ING1b SUMOylation could be a mechanism for directing its
13
14 function in response to DNA damage, particularly since PCNA is also known to be
15
16 SUMOylated at stalled replication forks in response to DNA damage (44).
17
18

19
20 In this study, we also found that PIAS3 interacts with ING1b. However, PIAS3
21
22 overexpression, in contrast to PIAS4 overexpression, decreased ING1b SUMOylation. When
23
24 PIAS3&4 were co-expressed, PIAS3 inhibited ING1b SUMOylation mediated by PIAS4
25
26 suggesting that PIAS3 might act as a dominant negative, perhaps through blocking PIAS4
27
28 access to ING1b K193. The PIAS family of SUMO E3 ligases contains a SP-RING finger
29
30 domain, a zinc finger motif that is closely related to the RING finger of Ubiquitin E3 ligases.
31
32 PHD finger motifs very closely resemble RING finger motifs and are also characterized by
33
34 Cys₃HisCys₄ which co-ordinate Zn²⁺ and that are required for function (45). KAP1, a well-
35
36 characterized transcription co-repressor, was reported to act as a SUMO E3 ligase for its own
37
38 SUMOylation, and this was mediated through its PHD finger (46) suggesting that this could
39
40 also occur with the ING1b protein. However, experiments with a PHD 7CA mutant where 7
41
42 conserved cysteines were mutated to alanine did not have any effect on SUMOylation (data
43
44 not shown), supporting the idea that ING1b does not auto-SUMOylate and at least one
45
46 SUMO E3 ligase is required to SUMOylate ING1b. Finally, while the PIAS E3 SUMO ligase
47
48 family is arguably the best understood, there are many other E3 SUMO ligases known,
49
50 leaving open the possibility that ING1b is also a substrate of other E3 SUMO ligases.
51
52
53
54
55
56

57 We also found that ING1b SUMOylation at K193 affects the regulation of *ISG15* and
58
59
60

1
2
3
4 *DGCR8* transcription. First, we found that ING1b WT repressed *ISG15*. In addition, consistent
5
6 with a previous study (12), we saw that ING1b WT overexpression mediated *DGCR8*
7
8 repression. While ING1b E195A SUMOylation-resistant mutant repressed *ISG15* twice as
9
10 efficiently as WT, ING1b E195A acted differently on *DGCR8* and repressed it more than
11
12 ING1b WT. Although we see a strong enrichment of ING1b E195A on promoters of both
13
14 these genes, we do not have a clear indication of how ING1b SUMOylation might affect
15
16 promoters differently. Although we do not see a difference in their binding to Sin3a/HDAC
17
18 complexes, we cannot rule out a promoter specific or context dependent interaction of SUMO
19
20 modified ING1b with mSin3a or other HDAC components such as in case of genomic
21
22 instability, or UV mediated stress response, or programmed cell death where ING1b has been
23
24 implicated. Our data are consistent with ING1b repressing the expression of significantly
25
26 more genes that it induces (47) and suggests that SUMOylation may define a subset of genes
27
28 that are differentially sensitive to regulation by ING1b. Along with the role of SUMOylated
29
30 ING1b in *DGCR8* repression, we now uncover a new ING1b target gene, *ISG15*. Given that
31
32 *DGCR8* plays a vital role in microRNA biogenesis, ING1b SUMOylation may play an
33
34 important role in the processing of microRNA and thereby regulation of multiple processes.
35
36 The second gene that was significantly repressed by ING1b SUMOylation was *ISG15*.
37
38 Interestingly, it is an ubiquitin like modifier protein (48) induced by type 1 interferons (49).
39
40 *ISG15* is upregulated in a variety of different breast cancer cell lines and primary breast
41
42 cancer tissues (50). This is particularly interesting because ING1b has been reported to be
43
44 downregulated in 44% of primary breast cancers and in all the widely used breast cancer cell
45
46 lines (2). This may underline the role of ING1b in repressing *ISG15* expression and
47
48 preventing tumorigenesis. It was also reported that *ISG15* has antiviral activity towards
49
50 different types of viruses (51,52). A role for ING1b has not been reported in these cellular
51
52
53
54
55
56
57
58
59
60

1
2
3
4 processes but it opens the interesting possibility of the ING epigenetic regulators being
5
6 involved in remodeling DNA in response to viral infection and the subsequent transient and
7
8 longer-term immune responses that are elicited.
9

10 11 12 13 **Supplementary material**

14
15 Supplementary figures S1-7 along with their material & methods and figure legends can be
16
17 found at <http://carcin.oxfordjournals.org/>
18
19

20 21 22 23 **Acknowledgements**

24
25 We thank Donna Boland and the Southern Alberta Antibody Facility for ING1 antibodies and
26
27 Céline Monvoisin and Hélène Guyodo for technical support. We also thank the photonic facility
28
29 of the Microscopy Rennes Imaging Center (MRic-Photonics) of SFR BIOSIT, Université de Rennes 1.
30
31

32 33 34 35 **Funding**

36
37 SS was funded by Mobilité des doctorants étrangers à Rennes. CG is recipient of a doctoral
38
39 fellowship from the French Ministry of Education and Research and from the FRM (Fondation
40
41 pour la Recherche Médicale, FDT20130928015), ST is recipient of an Alberta Cancer
42
43 Foundation (ACF) graduate studentship. The laboratory of RP is funded by grants from
44
45 INSERM, La Ligue Contre le Cancer (Grand Ouest), Association pour la Recherche sur le
46
47 Cancer (ARC), Rennes Métropole (AIS), ANR (Safe 2012) and Leucémie Espoir grants. The
48
49 lab of SB is funded by the Alberta Cancer Foundation and the lab of KR is funded by the
50
51 Alberta Cancer Foundation, the Canadian Institutes of Health Research, Alberta Innovates
52
53 Health Solutions (AI-HS) and the Canadian Breast Cancer Foundation.
54
55
56
57
58
59
60

1
2
3
4
5
6
7
8
9
10
11
12
13
14
15
16
17
18
19
20
21
22
23
24
25
26
27
28
29
30
31
32
33
34
35
36
37
38
39
40
41
42
43
44
45
46
47
48
49
50
51
52
53
54
55
56
57
58
59
60

Conflicts of interest

The authors declare no conflicts of interest.

For Peer Review

References

1. Garkavtsev, I., *et al.* (1996) Suppression of the novel growth inhibitor p33ING1 promotes neoplastic transformation. *Nature genetics*, **14**, 415-20.
2. Toyama, T., *et al.* (1999) Suppression of ING1 expression in sporadic breast cancer. *Oncogene*, **18**, 5187-93.
3. Nagashima, M., *et al.* (2001) DNA damage-inducible gene p33ING2 negatively regulates cell proliferation through acetylation of p53. *Proceedings of the National Academy of Sciences of the United States of America*, **98**, 9671-6.
4. Nagashima, M., *et al.* (2003) A novel PHD-finger motif protein, p47ING3, modulates p53-mediated transcription, cell cycle control, and apoptosis. *Oncogene*, **22**, 343-50.
5. Shiseki, M., *et al.* (2003) p29ING4 and p28ING5 bind to p53 and p300, and enhance p53 activity. *Cancer research*, **63**, 2373-8.
6. Feng, X., *et al.* (2002) Different HATS of the ING1 gene family. *Trends Cell Biol*, **12**, 532-8.
7. Pena, P.V., *et al.* (2008) Histone H3K4me3 binding is required for the DNA repair and apoptotic activities of ING1 tumor suppressor. *J Mol Biol*, **380**, 303-12.
8. He, G.H., *et al.* (2005) Phylogenetic analysis of the ING family of PHD finger proteins. *Molecular biology and evolution*, **22**, 104-16.
9. Doyon, Y., *et al.* (2006) ING tumor suppressor proteins are critical regulators of chromatin acetylation required for genome expression and perpetuation. *Molecular cell*, **21**, 51-64.
10. Kataoka, H., *et al.* (2003) ING1 represses transcription by direct DNA binding and through effects on p53. *Cancer research*, **63**, 5785-92.
11. Binda, O., *et al.* (2008) SIRT1 negatively regulates HDAC1-dependent transcriptional repression by the RBP1 family of proteins. *Oncogene*, **27**, 3384-92.
12. Gomez-Cabello, D., *et al.* (2010) Regulation of the microRNA processor DGCR8 by the tumor suppressor ING1. *Cancer research*, **70**, 1866-74.
13. Han, X., *et al.* (2008) Tethering by lamin A stabilizes and targets the ING1 tumour suppressor. *Nature cell biology*, **10**, 1333-40.
14. Bernier-Villamor, V., *et al.* (2002) Structural basis for E2-mediated SUMO conjugation revealed by a complex between ubiquitin-conjugating enzyme Ubc9 and RanGAP1. *Cell*, **108**, 345-56.
15. Yang, S.H., *et al.* (2004) SUMO promotes HDAC-mediated transcriptional repression. *Molecular cell*, **13**, 611-7.
16. Liu, H.W., *et al.* (2012) Chromatin modification by SUMO-1 stimulates the promoters of translation machinery genes. *Nucleic acids research*, **40**, 10172-86.
17. Gomez-del Arco, P., *et al.* (2005) Ikaros SUMOylation: switching out of repression. *Mol Cell Biol*, **25**, 2688-97.
18. Guerillon, C., *et al.* (2013) ING1 and ING2: multifaceted tumor suppressor genes. *Cell Mol Life Sci*, **70**, 3753-72.
19. Yu, L., *et al.* (2013) Src regulates the activity of the ING1 tumor suppressor. *PLoS One*, **8**, e60943.
20. Satpathy, S., *et al.* (2013) RegulatING chromatin regulators: post-translational modification of the ING family of epigenetic regulators. *Biochem J*, **450**, 433-42.
21. Ythier, D., *et al.* (2010) Sumoylation of ING2 regulates the transcription mediated by Sin3A. *Oncogene*, **29**, 5946-56.
22. Guo, Q., *et al.* (2011) Citrullination of Inhibitor of Growth 4 (ING4) by Peptidylarginine Deminase 4 (PAD4) Disrupts the Interaction between ING4 and p53. *Journal of Biological Chemistry*, **286**, 17069-17078.
23. Garate, M., *et al.* (2007) Phosphorylation of the tumor suppressor p33(ING1b) at Ser-126 influences its protein stability and proliferation of melanoma cells. *FASEB J*, **21**, 3705-16.
24. Gong, W., *et al.* (2006) Subcellular targeting of p33ING1b by phosphorylation-dependent 14-3-3 binding regulates p21WAF1 expression. *Molecular and cellular biology*, **26**, 2947-54.

- 1
- 2
- 3
- 4 25. Hsu, Y.H., *et al.* (2006) Sumoylated SnoN represses transcription in a promoter-specific manner. *The Journal of biological chemistry*, **281**, 33008-18.
- 5
- 6 26. Suzuki, K., *et al.* (2011) Domain recognition of the ING1 tumor suppressor by a panel of monoclonal antibodies. *Hybridoma*, **30**, 239-45.
- 7
- 8 27. Johnson, E.S. (2004) Protein modification by SUMO. *Annu Rev Biochem*, **73**, 355-82.
- 9 28. Schwarz, S.E., *et al.* (1998) The ubiquitin-like proteins SMT3 and SUMO-1 are conjugated by the UBC9 E2 enzyme. *Proc Natl Acad Sci U S A*, **95**, 560-4.
- 10
- 11 29. Hickey, C.M., *et al.* (2012) Function and regulation of SUMO proteases. *Nat Rev Mol Cell Biol*, **13**, 755-66.
- 12
- 13 30. Galanty, Y., *et al.* (2009) Mammalian SUMO E3-ligases PIAS1 and PIAS4 promote responses to DNA double-strand breaks. *Nature*, **462**, 935-9.
- 14
- 15 31. Luo, J., *et al.* (2009) The *Caenorhabditis elegans* ing-3 gene regulates ionizing radiation-induced germ-cell apoptosis in a p53-associated pathway. *Genetics*, **181**, 473-82.
- 16
- 17 32. Larrieu, D., *et al.* (2009) ING2 controls the progression of DNA replication forks to maintain genome stability. *EMBO Rep*, **10**, 1168-74.
- 18
- 19 33. Bischof, O., *et al.* (2006) The E3 SUMO ligase PIASy is a regulator of cellular senescence and apoptosis. *Mol Cell*, **22**, 783-94.
- 20
- 21 34. Hietakangas, V., *et al.* (2006) PDSM, a motif for phosphorylation-dependent SUMO modification. *Proceedings of the National Academy of Sciences of the United States of America*, **103**, 45-50.
- 22
- 23 35. Scott, M., *et al.* (2001) UV-induced binding of ING1 to PCNA regulates the induction of apoptosis. *J Cell Sci*, **114**, 3455-62.
- 24
- 25 36. Vieyra, D., *et al.* (2002) ING1 isoforms differentially affect apoptosis in a cell age-dependent manner. *Cancer Res*, **62**, 4445-52.
- 26
- 27 37. Rohira, A.D., *et al.* (2013) Covalent Small Ubiquitin-like Modifier (SUMO) Modification of Maf1 Protein Controls RNA Polymerase III-dependent Transcription Repression. *The Journal of biological chemistry*, **288**, 19288-95.
- 28
- 29 38. Rajarajacholan, U.K., *et al.* (2013) The ING1a tumor suppressor regulates endocytosis to induce cellular senescence via the Rb-E2F pathway. *PLoS Biol*, **11**, e1001502.
- 30
- 31 39. Han, J., *et al.* (2004) The Drosha-DGCR8 complex in primary microRNA processing. *Genes Dev*, **18**, 3016-27.
- 32
- 33 40. Neyret-Kahn, H., *et al.* (2013) Sumoylation at chromatin governs coordinated repression of a transcriptional program essential for cell growth and proliferation. *Genome research*.
- 34
- 35 41. Ythier, D., *et al.* (2008) The new tumor suppressor genes ING: genomic structure and status in cancer. *International journal of cancer. Journal international du cancer*, **123**, 1483-90.
- 36
- 37 42. Cheung, K.J., Jr., *et al.* (2002) The tumour suppressor p33ING1 does not regulate migration and angiogenesis in melanoma cells. *Int J Oncol*, **21**, 1361-5.
- 38
- 39 43. Wong, R.P., *et al.* (2011) Tumour suppressor ING1b maintains genomic stability upon replication stress. *Nucleic acids research*, **39**, 3632-42.
- 40
- 41 44. Gali, H., *et al.* (2012) Role of SUMO modification of human PCNA at stalled replication fork. *Nucleic acids research*, **40**, 6049-59.
- 42
- 43 45. Bienz, M. (2006) The PHD finger, a nuclear protein-interaction domain. *Trends in biochemical sciences*, **31**, 35-40.
- 44
- 45 46. Ivanov, A.V., *et al.* (2007) PHD domain-mediated E3 ligase activity directs intramolecular sumoylation of an adjacent bromodomain required for gene silencing. *Molecular cell*, **28**, 823-37.
- 46
- 47 47. Feng, X., *et al.* (2006) HSP70 induction by ING proteins sensitizes cells to tumor necrosis factor alpha receptor-mediated apoptosis. *Mol Cell Biol*, **26**, 9244-55.
- 48
- 49 48. Loeb, K.R., *et al.* (1992) The interferon-inducible 15-kDa ubiquitin homolog conjugates to intracellular proteins. *The Journal of biological chemistry*, **267**, 7806-13.
- 50
- 51 49. Haas, A.L., *et al.* (1987) Interferon induces a 15-kilodalton protein exhibiting marked homology to ubiquitin. *The Journal of biological chemistry*, **262**, 11315-23.
- 52
- 53
- 54
- 55
- 56
- 57
- 58
- 59
- 60

- 1
- 2
- 3
- 4 50. Bektas, N., *et al.* (2008) The ubiquitin-like molecule interferon-stimulated gene 15 (ISG15) is a
- 5 potential prognostic marker in human breast cancer. *Breast Cancer Res*, **10**, R58.
- 6 51. Okumura, A., *et al.* (2006) Innate antiviral response targets HIV-1 release by the induction of
- 7 ubiquitin-like protein ISG15. *Proceedings of the National Academy of Sciences of the United*
- 8 *States of America*, **103**, 1440-5.
- 9 52. Lenschow, D.J., *et al.* (2005) Identification of interferon-stimulated gene 15 as an antiviral
- 10 molecule during Sindbis virus infection in vivo. *Journal of virology*, **79**, 13974-83.
- 11
- 12
- 13
- 14
- 15
- 16
- 17
- 18
- 19
- 20
- 21
- 22
- 23
- 24
- 25
- 26
- 27
- 28
- 29
- 30
- 31
- 32
- 33
- 34
- 35
- 36
- 37
- 38
- 39
- 40
- 41
- 42
- 43
- 44
- 45
- 46
- 47
- 48
- 49
- 50
- 51
- 52
- 53
- 54
- 55
- 56
- 57
- 58
- 59
- 60

For Peer Review

Figure legends

Figure 1. ING1b is SUMOylated. **A.** ING1b expression construct was co-transfected with increasing concentrations of HA/SUMO1 expression construct in HEK293 cells. Cells were lysed in the presence of NEM and lysates were subjected to denaturing α ING1 IP and IB with SUMO1 (α HA) and ING1 (Cab1 and Cab5) to detect SUMOylated and unSUMOylated ING1b. **B.** U2OS cell lysates expressing HA/SUMO1 with or without ING1b were subjected to α HA IP and IB with HA and ING1 antibodies. **C.** U2OS cell lysates with or without HA/SUMO1 was subjected to anti-HA purification using HA affinity matrix under denaturing conditions. 2X SDS-Laemmli sample buffer was used to elute the SUMOylated proteins and eluent was subjected to SDS-PAGE electrophoresis. α ING1 IBs were performed to detect endogenous SUMOylated ING1b protein followed by α HA to detect purified SUMOylated proteins. α ING1 & α HA (SUMO1) and α -actin IB were performed to confirm protein expression and equal loading respectively. Black arrows depicting SM (sumoylated) and UM (unmodified) denotes SUMO modified ING1b and unmodified ING1b respectively. Major SUMOylated endogenous protein species of ~68 and ~85 KDa were visualized in the input lysate while a protein of ~85 KDa was recovered from the HA affinity matrix. The band at ~20 KDa could be free SUMO1. **D.** HEK293 cells expressing HA/Ubc9 WT or HA/Ubc9 CS were immunoprecipitated with α ING1 followed by IB with α HA and α ING1 to detect SUMOylated ING1b, HA/SUMO1, HA/Ubc9 and modified and unmodified ING1 respectively. The associated graph indicates the relative density of SUMOylated ING1b in cells expressing Ubc9 WT or Ubc9 CS mutant. **E.** HEK293 cells expressing ING1b and HA/SUMO1 were co-expressed with FLAG tagged SENP1 or SENP2 and levels of SUMOylated ING1b were assessed by denaturing immunoprecipitation of ING1b and immunoblotting against α HA-SUMO. Expression of the different transfected constructs was checked with α FLAG (SENP1&2), α HA (SUMO1) and

1
2
3
4
5
6
7
8
9
10
11
12
13
14
15
16
17
18
19
20
21
22
23
24
25
26
27
28
29
30
31
32
33
34
35
36
37
38
39
40
41
42
43
44
45
46
47
48
49
50
51
52
53
54
55
56
57
58
59
60

α ING1.

Figure 2. PIAS4 promotes ING1b SUMOylation. **A.** HEK293 cell lysates co-expressing FLAG/PIAS1, 2, 3& 4 and ING1b were co-immunoprecipitated with α FLAG and subjected to ING1 IB. Cell lysates were immunoblotted with α ING1, α FLAG (PIAS1-4) and α -actin to confirm equal loading. **B.** FLAG/PIAS3&4, ING1b, HA/Ubc9 and HA/SUMO1 were co-expressed in HEK293 and cell lysates were subjected to denaturing immunoprecipitation with α ING1 and immuno-blotted with α HA (SUMO1 & Ubc9). The associated graph indicates the relative density of SUMOylated ING1b in cells expressing FLAG/PIAS3 or FLAG/PIAS4 **C.** U2OS cell lysates co-expressing ING1b, HA/Ubc9, HA/SUMO1 with PIAS4 and PIAS3&4 were directly subjected to SDS-PAGE electrophoresis and α ING1 to detect modified and unmodified ING1b. SUMO1 modified ING1b is marked by the arrow. ++ represents a higher exposure of the panel marked +. The associated graph indicates the density of SUMOylated ING1b in cells expression FLAG/PIAS4 alone or PIAS3 and FLAG/PIAS4 together with ING1b, HA/SUMO1 and HA/Ubc9 **D.** U2OS cell lysates were subjected to IgG or α PIAS4 IP followed by α ING1 IB. Cell lysates were probed for α ING1, α PIAS4 and α -actin to confirm protein expression and equal protein loading.

Figure 3. Identification of ING1b SUMO acceptor sites. **A.** SUMOplot software (Abgent) predicts the presence of three consensus SUMO sites from the primary protein sequence of ING1b and a score is assigned based on the hydrophobicity of the first residue and the presence of an acidic amino acid on the fourth position of the consensus motif. **B.** Sequence analysis revealed that the site with the highest probability containing lysine 193 is completely conserved in other vertebrates. **C.** α ING1b denaturing immunoprecipitation was performed with HEK293 cell lysates expressing ING1b wild type (WT) and the ING1 K193R (K193R) point mutant with and without HA/SUMO1. Expression of the transfected constructs and

1
2
3
4 equal loading were confirmed using α ING1 & α HA (SUMO1) and α -actin, respectively. **D.** A
5
6 reciprocal α HA immunoprecipitation was performed with U2OS cell lysates expressing ING1b
7
8 WT, K193R & E195A (SUMOylation specific point mutant) and HA/SUMO1 to confirm the
9
10 presence of a functional SUMO consensus site (AKAE) containing lysine 193 and glutamic
11
12 acid 195.
13

14
15 **Figure 4. Identification of a novel PDSM in ING1b.** **A.** Lysine 193 of the SUMO consensus
16
17 is the second last amino acid within the NLS, however, the rest of the SUMO consensus and
18
19 PDSM lies between the NLS and PHD domains of ING1b. **B.** U2OS cell lysates expressing
20
21 ING1b WT or ING1b S199D mutant and HA/SUMO1 were subjected to α HA IP followed by IB
22
23 with α ING1, α HA (SUMO1) and α -actin for detecting SUMO modified ING1, protein
24
25 expression and protein loading controls respectively.
26
27

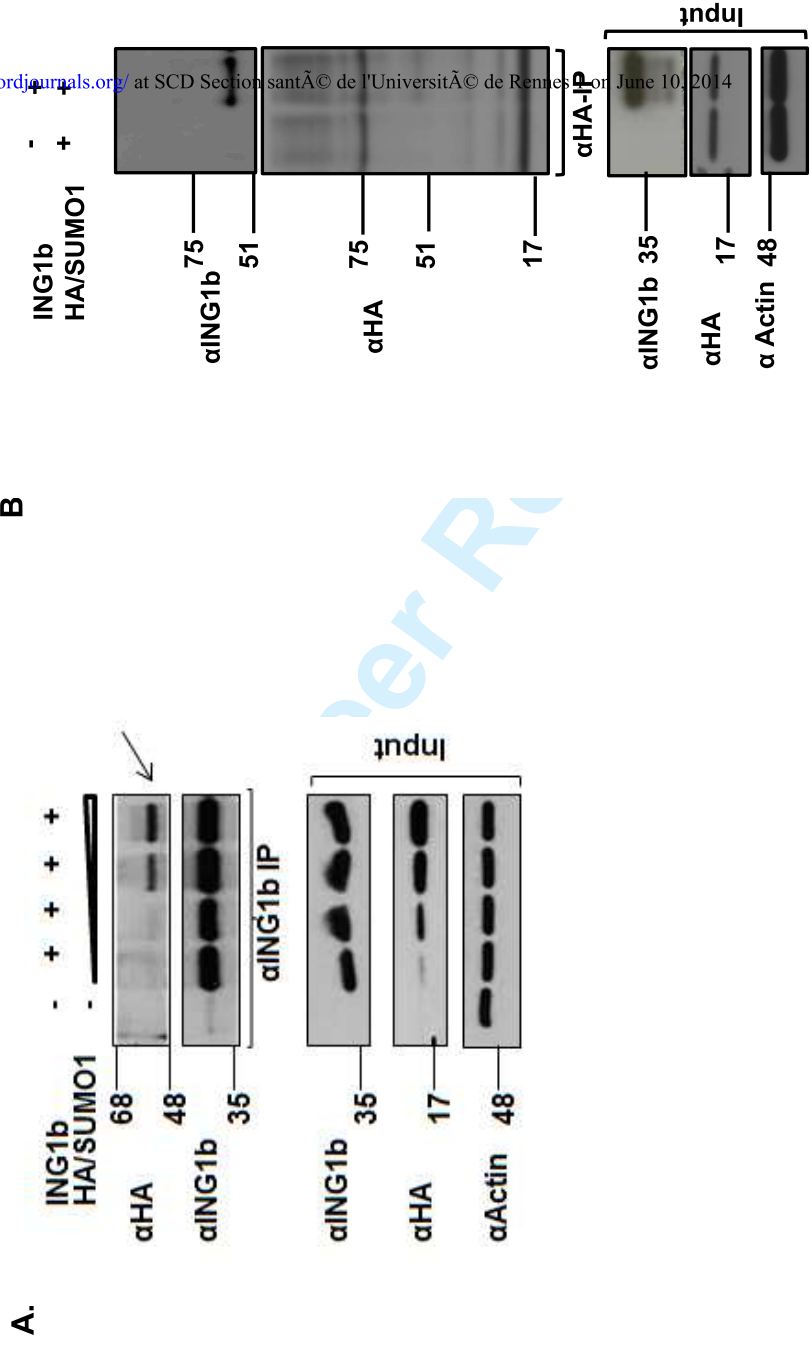
28
29 **Figure 5. SUMOylation does not alter ING1b localization.** **A.** U2OS cells transfected with
30
31 control vector or either ING1b or SUMO deficient mutants (K193R or E195A) were stained
32
33 with α ING1 or DAPI to stain ING1b protein and DNA, respectively. Cells expressing ING1b,
34
35 ING1b K193R and ING1b E195A were imaged with the same exposure time and for cells
36
37 expressing control vector, exposure time was increased in order to detect endogenous
38
39 ING1b. **B.** The chromatin enriched-fractions (CEF) or whole cell extracts (WCE) from U2OS
40
41 cells transfected with empty vector, ING1bWT or SUMO specific mutant (ING1bE195A) were
42
43 subjected to IB using α ING1 to detect chromatin bound ING1b and α H3 for establishing equal
44
45 loading of CEF. WCE was probed for α ING1 and with actin to confirm equal protein
46
47 expression and loading, respectively.
48
49
50
51

52
53 **Figure 6. ING1b sumoylation affects ING1b binding to, and modulates transcription of**
54
55 ***ISG15* and *DGCR8*.** **A.** *ISG15* and *DGCR8* mRNA expression was quantified by RT-qPCR in
56
57 cells either expressing empty vector, ING1b WT or ING1b E195A. All the gene expression
58
59
60

1
2
3 levels were normalized to *GAPDH*. Results represent differences in *ISG15* and *DGCR8*
4 relative to *ING1b* expression \pm SD. (* $p < 0.05$; ** $p < 0.01$; *** $p < 0.001$; NS, not significant). **B.**
5
6 Panel (i) and (ii) Binding of *ING1b* on *ISG15* and *DGCR8* promoters was analysed by
7 chromatin immunoprecipitation. Mouse IgG was used as a negative control. Bar graphs
8 represent fold changes in *ING1b* on *ISG15* [panel (i)] and *DGCR8* [panel (ii)] promoter
9 occupancy of cells transfected as in Figure 1A \pm SD. (* $p < 0.05$; ** $p < 0.01$; *** $p < 0.001$; NS, not
10 significant).
11
12
13
14
15
16
17
18
19
20
21
22
23
24
25
26
27
28
29
30
31
32
33
34
35
36
37
38
39
40
41
42
43
44
45
46
47
48
49
50
51
52
53
54
55
56
57
58
59
60

For Peer Review

Figure 1.



Downloaded from <http://carcin.oxfordjournals.org/> at SCD Section santÃ© de l'UniversitÃ© de Rennes on June 10, 2014

Downloaded from <http://carcin.oxfordjournals.org/> at SCD Section santÃ© de l'UniversitÃ© de Rennes 1 on June 10, 2014

C.

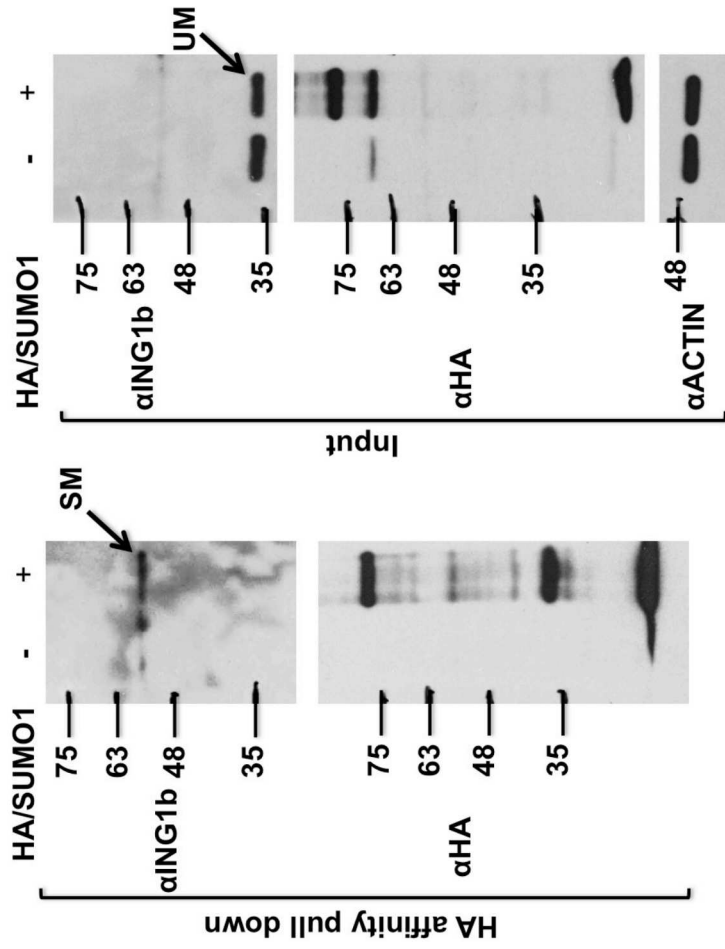
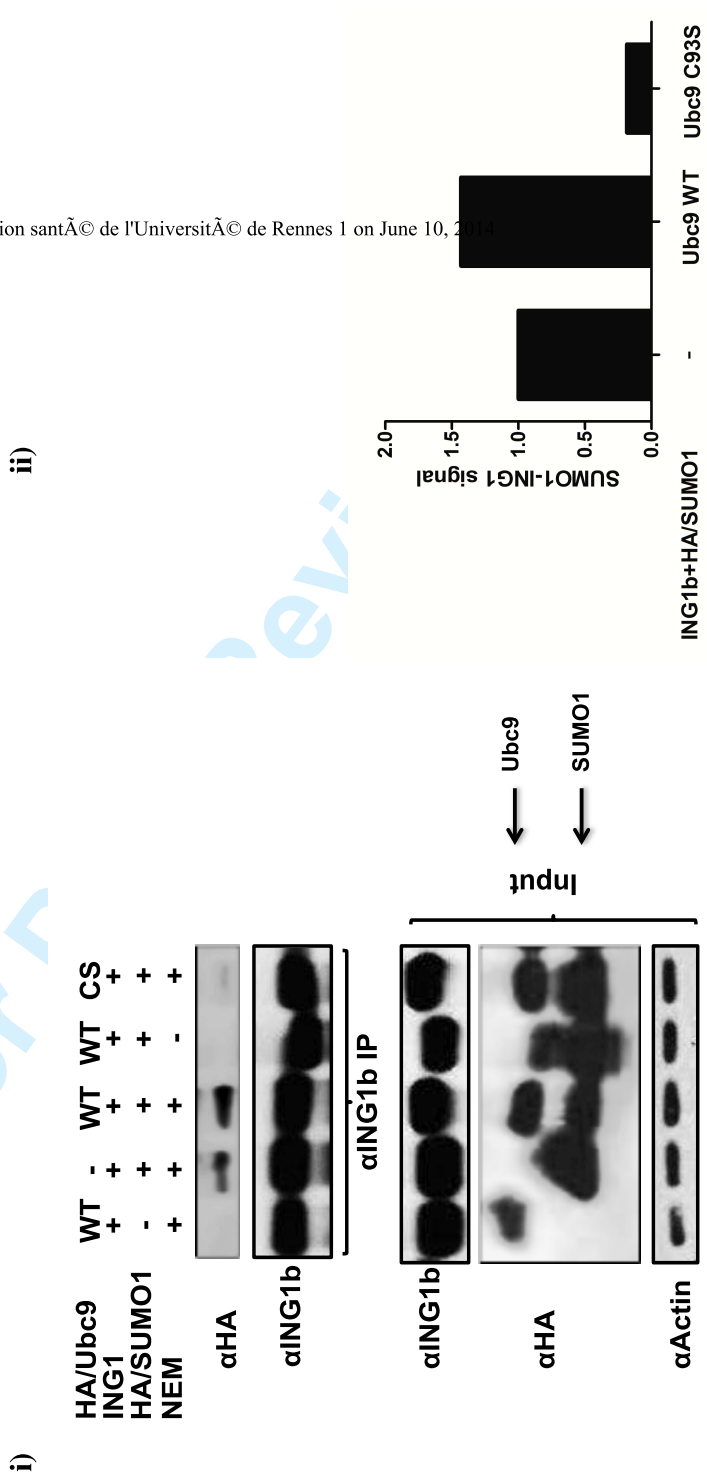


Figure 1.

1
2
3
4
5
6
7
8
9
10
11
12
13
14
15
16
17
18
19
20
21
22
23
24
25
26
27
28
29
30
31
32
33
34
35
36
37
38
39
40
41
42
43
44
45
46
47
48
49

Figure 1. D.



Downloaded from <http://carcin.oxfordjournals.org/> at SCD Section santÃ© de l'UniversitÃ© de Rennes 1 on June 10, 2014

1
2
3
4
5
6
7
8
9
10
11
12
13
14
15
16
17
18
19
20
21
22
23
24
25
26
27
28
29
30
31
32
33
34
35
36
37
38
39
40
41
42
43
44
45
46
47
48
49

Downloaded from <http://carcin.oxfordjournals.org/> at SCD Section santÃ© de l'UniversitÃ© de Rennes 1 on June 10, 2014

E.

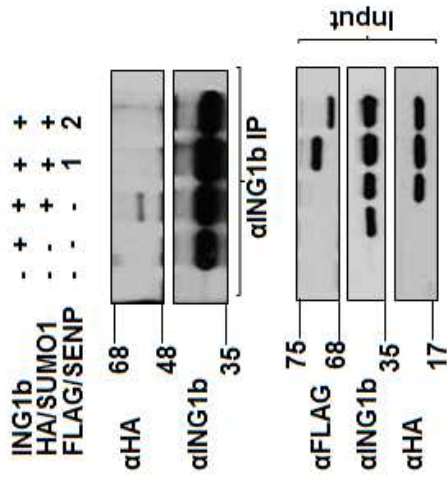
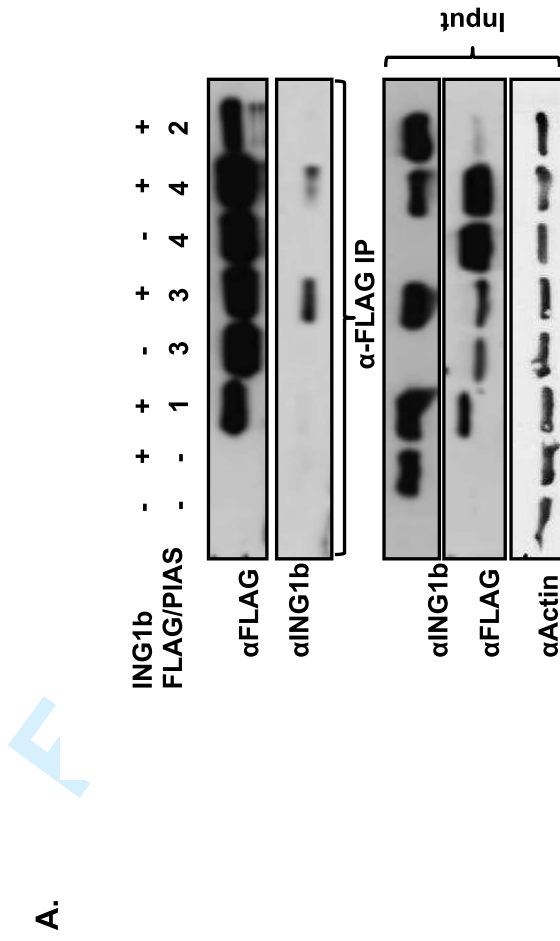
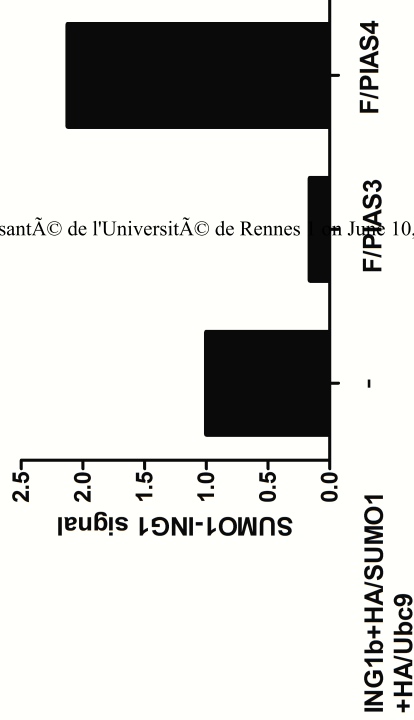
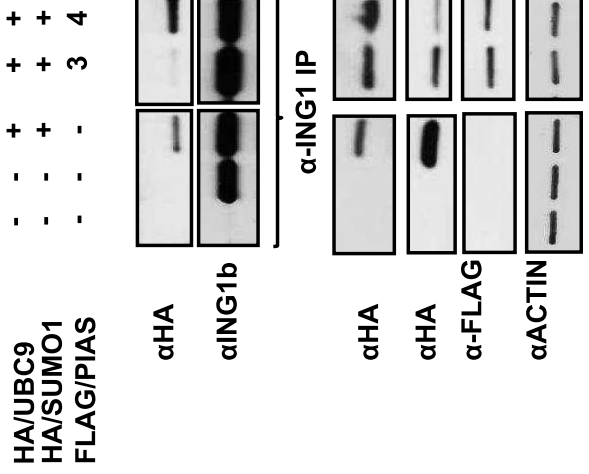


Figure 2.



B.

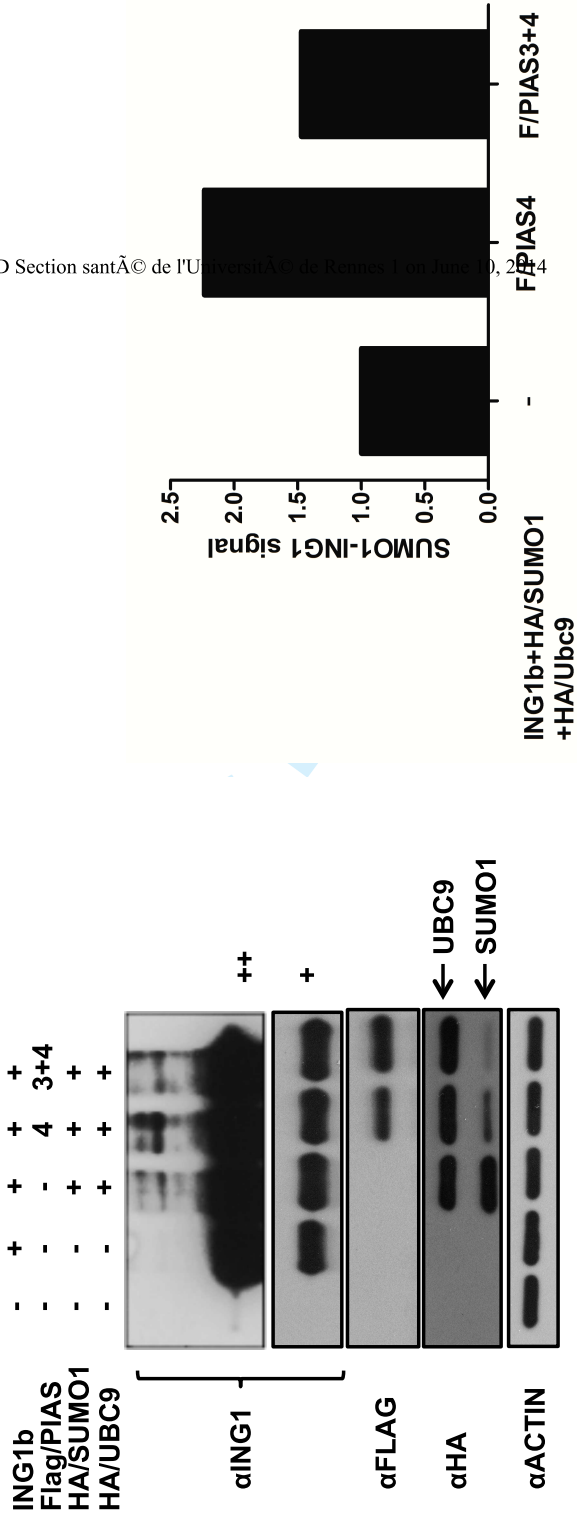


Downloaded from <http://carcin.oxfordjournals.org/> at SCD Section santÃ© de l'UniversitÃ© de Rennes on June 10, 2014

1
2
3
4
5
6
7
8
9
10
11
12
13
14
15
16
17
18
19
20
21
22
23
24
25
26
27
28
29
30
31
32
33
34
35
36
37
38
39
40
41
42
43
44
45
46
47
48
49

Figure 2.

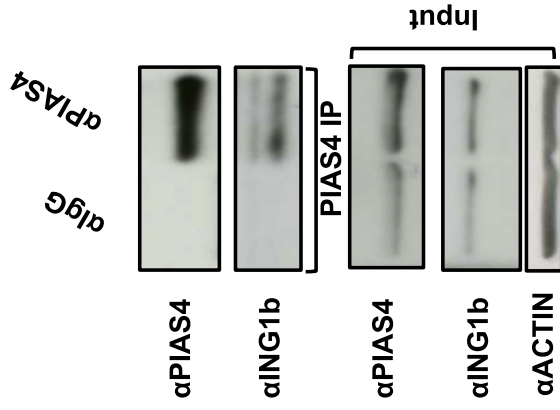
C.



Downloaded from <http://carcin.oxfordjournals.org/> at SCD Section santÃ© de l'UniversitÃ© de Rennes 1 on June 10, 2014

Downloaded from <http://carcin.oxfordjournals.org/> at SCD Section santÃ© de l'UniversitÃ© de Rennes 1 on June 10, 2014

D.



1
2
3
4
5
6
7
8
9
10
11
12
13
14
15
16
17
18
19
20
21
22
23
24
25
26
27
28
29
30
31
32
33
34
35
36
37
38
39
40
41
42
43
44
45
46
47
48
49

Figure 3.

A.

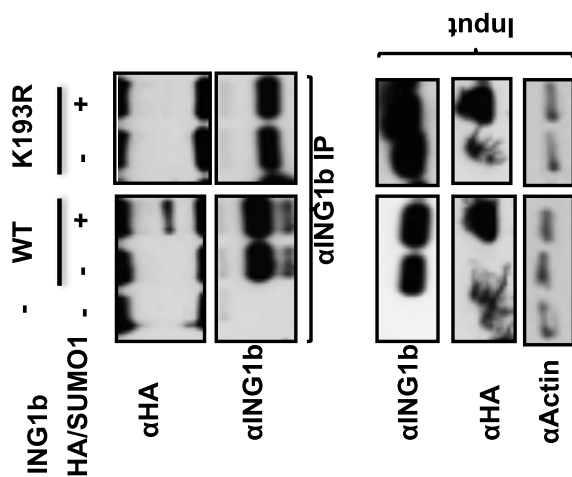
No.	Position	Group	Score
1.	K193	KKRSKAKAE REASP	0.79
2.	K135	AGADR PKGE AAAQA	0.61
3.	K128	TAGNS GKAG ADRPK	0.50

B.

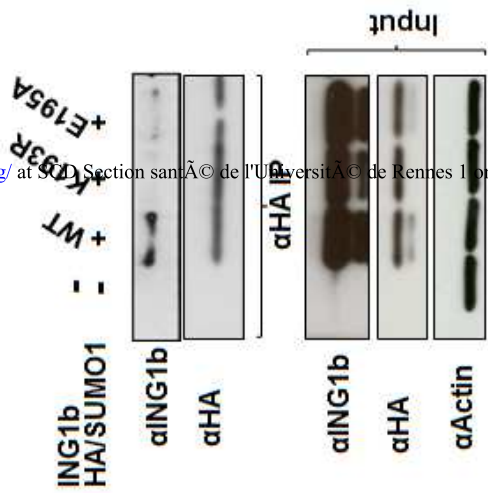
Human	DRPKGEAAA----SKAKAEREASPDL
Mouse	DKSKSE AIT-----SKAKAEREASPDL
Rat	DKSKSE AIT-----SKAKAEREASPDL
Chicken	DKSKNE TIA-----SKAKAEREASPPDL
Xenopus	EKPKNE AIA-----SKAKAEREASPDL
	E137
	K135
	Non-Conserved
	E195
	K193
	Conserved

Figure 3.

C.



D.

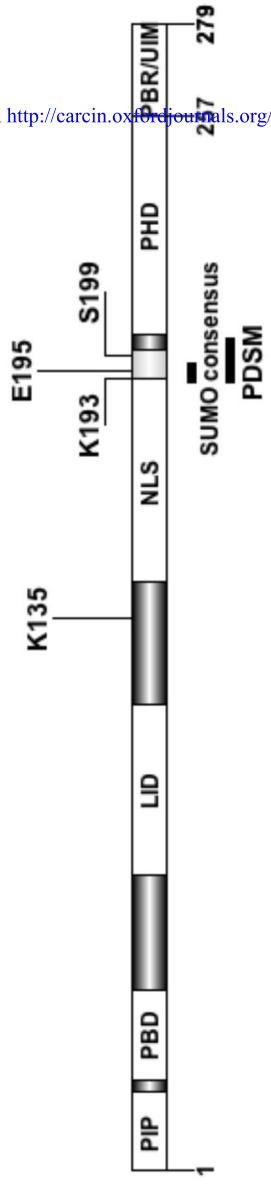


Downloaded from <http://carcin.oxfordjournals.org/> at 90 D Section sans of l'Université de Rennes 1 on June 10, 2014

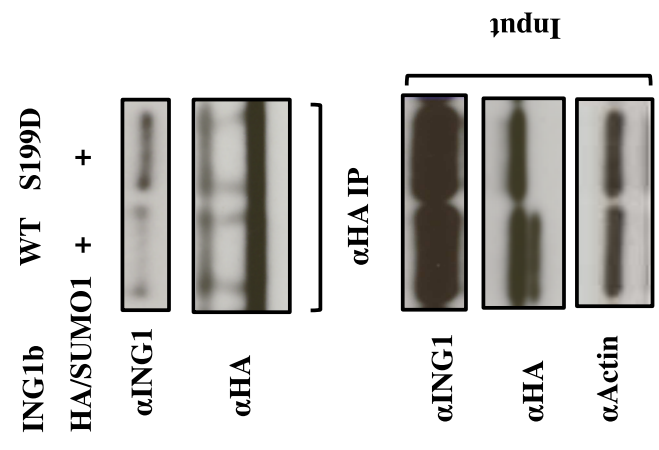
er Review

Figure 4

A.



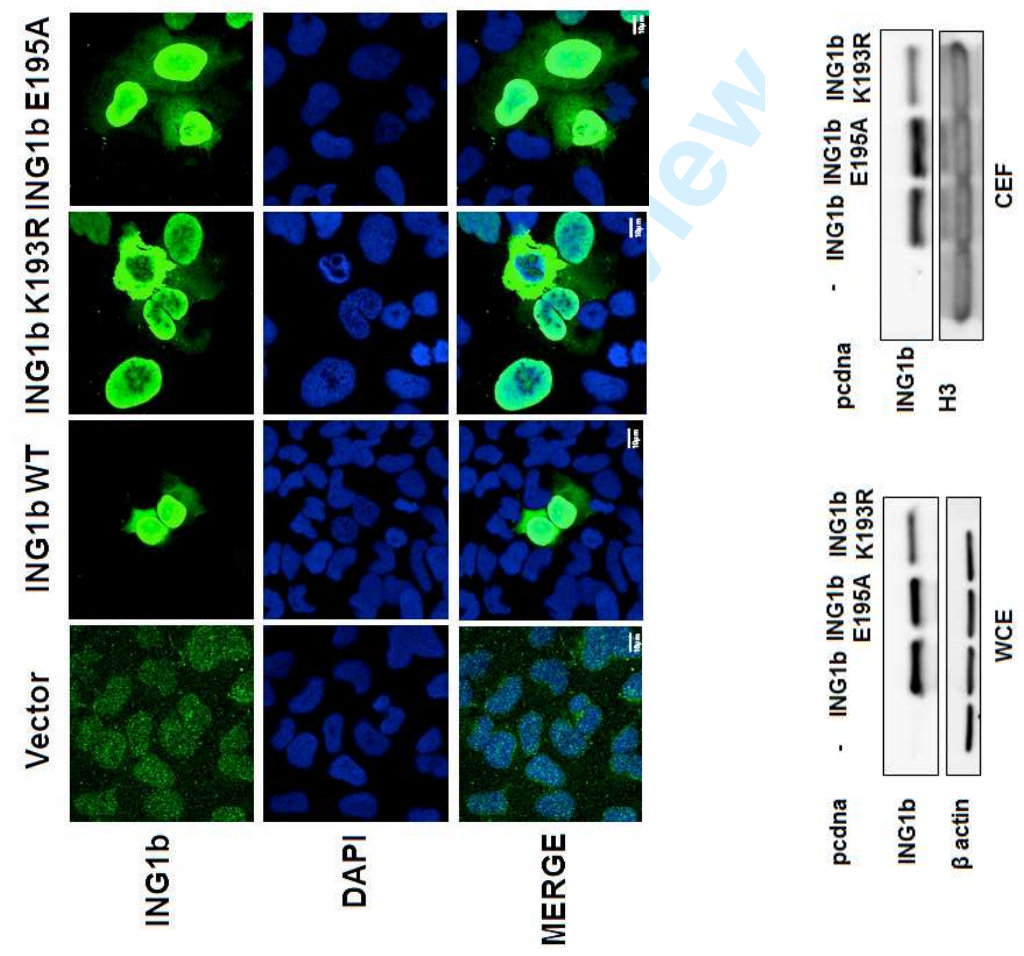
B.



Downloaded from <http://carcin.oxfordjournals.org/> at SCD Section santÃ© de l'UniversitÃ© de Rennes 1 on June 10, 2014

Downloaded from <http://carcin.oxfordjournals.org/> at SCD Section santÃ© de l'UniversitÃ© de Rennes 1 on June 10, 2014

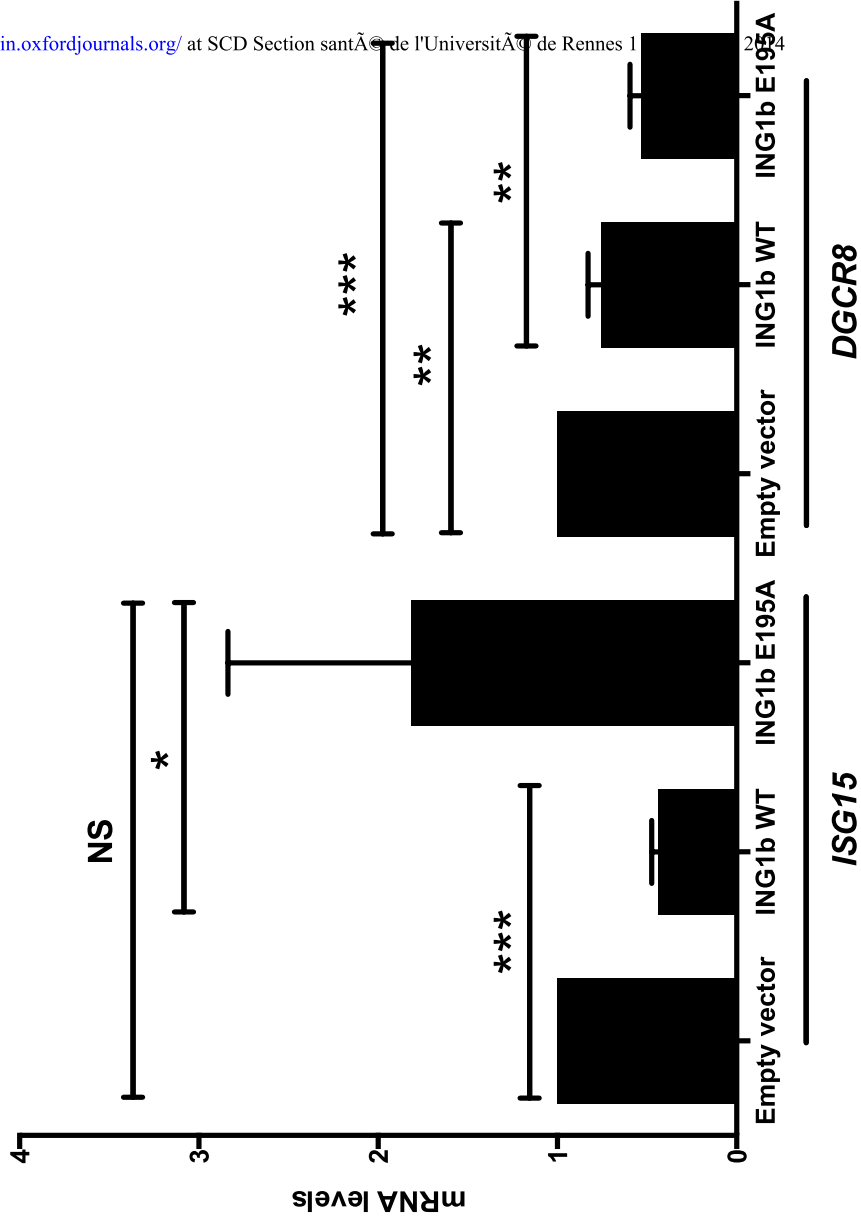
Figure 5.



1
2
3
4
5
6
7
8
9
10
11
12
13
14
15
16
17
18
19
20
21
22
23
24
25
26
27
28
29
30
31
32
33
34
35
36
37
38
39
40
41
42
43
44
45
46
47
48
49

Downloaded from <http://carcin.oxfordjournals.org/> at SCD Section santÃ© de l'UniversitÃ© de Rennes 1 on 24

Figure 6.



Downloaded from <http://carcin.oxfordjournals.org/> at SGD Section santA© de l'UniversitA© de Rennes 1 on June 10, 2014

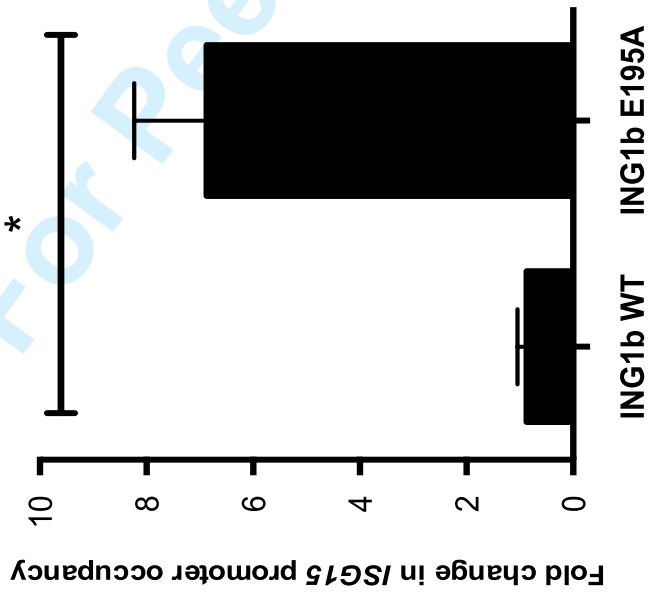
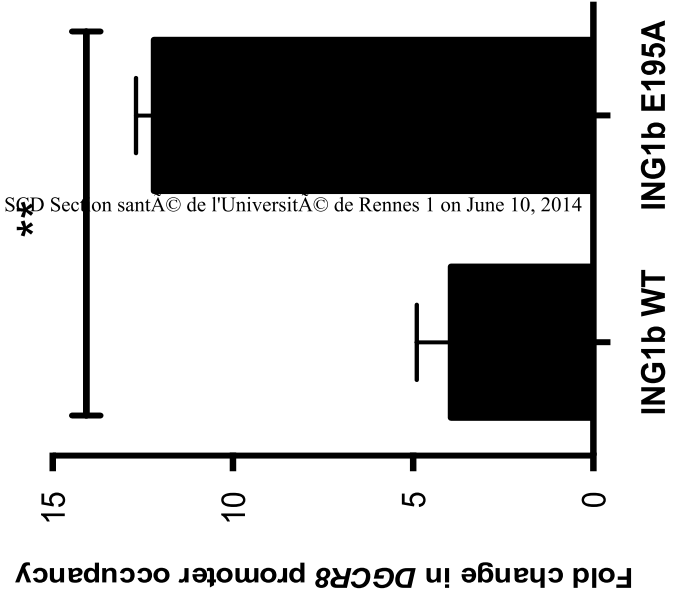


Figure 6

B.

1
2
3
4
5
6
7
8
9
10
11
12
13
14
15
16
17
18
19
20
21
22
23
24
25
26
27
28
29
30
31
32
33
34
35
36
37
38
39
40
41
42
43
44
45
46
47
48
49

Supplementary:**Material and methods:***Apoptosis and cell cycle analyses.*

HEK293 cells were transfected with either empty vector, pcDNA/ING1b WT or pcDNA/ING1b E195A. After 48 hours apoptosis was analysed on a Gallios cytometer (Beckman Coulter) using PE & active caspase-3 apoptosis kit (BD Pharmingen) and cell cycle was analysed using DAPI staining (SIGMA) using Kaluza 1.3 and FlowJo vX softwares.

Figure legends:

Figure S1. **A.** HEK293 cell lysates co-expressing HA/SUMO and pcDNA/ING1b were co-immunoprecipitated with α HA and subjected to ING1b IB. Cell lysates were immunoblotted with α ING1b, α HA and α actin to confirm equal loading. **B.** U2OS cell lysates expressing either empty vector or ING1b and HA/SUMO1 was subjected to α ING1b IP and IB with ING1b and β -actin antibodies. SM : SUMO Modified ING1b ; UM : UnModified ING1b ; Ig : immunoglobulin. **C.** U2OS cell lysates transfected with empty vector or pcDNA/ING1b were subjected to α ING1b IP and IB with ING1b and actin antibodies. ++ or + denotes high or low exposure.

Figure S2 **A.** HA/Ubc9 dose dependent ING1b sumoylation. U2OS cell lysates coexpressing Flag/SUMO, HA/Ubc9 and ING1b were subjected to Flag IP followed by α ING1b IB. Cell lysates were probed for HA, Flag and β -actin to confirm protein expression and equal protein loading. **B.** U2OS cell lysates overexpressing Flag/ING1b were subjected to Flag IP followed by α Ubc9 IB. Lysates were probed for Flag and β -actin to confirm protein expression and equal protein loading.

1
2
3
4
5 **Figure S3 A.** HEK293 cell lysates co-expressing pcDNA/ING1b, HA/SUMO, HA/Ubc9, Flag/PIAS3
6 and Flag/PIAS4 were directly subjected to SDS-PAGE electrophoresis and α ING1b to detect modified
7 (SM) and unmodified (UM) ING1b and with α HA, α Flag and α β -actin antibodies. ++ or + denotes high
8 or low exposure.
9
10
11
12

13
14 **Figure S4** U2OS cell lysates expressing either empty vector, pcDNA/ING1b WT or pcDNA/ING1b
15 S199A and Flag/SUMO were subjected to α Flag IP followed by IB with α ING1b, α Flag and α β -actin
16 to detect ING1b sumoylation, protein expression and protein loading controls respectively.
17
18
19
20
21

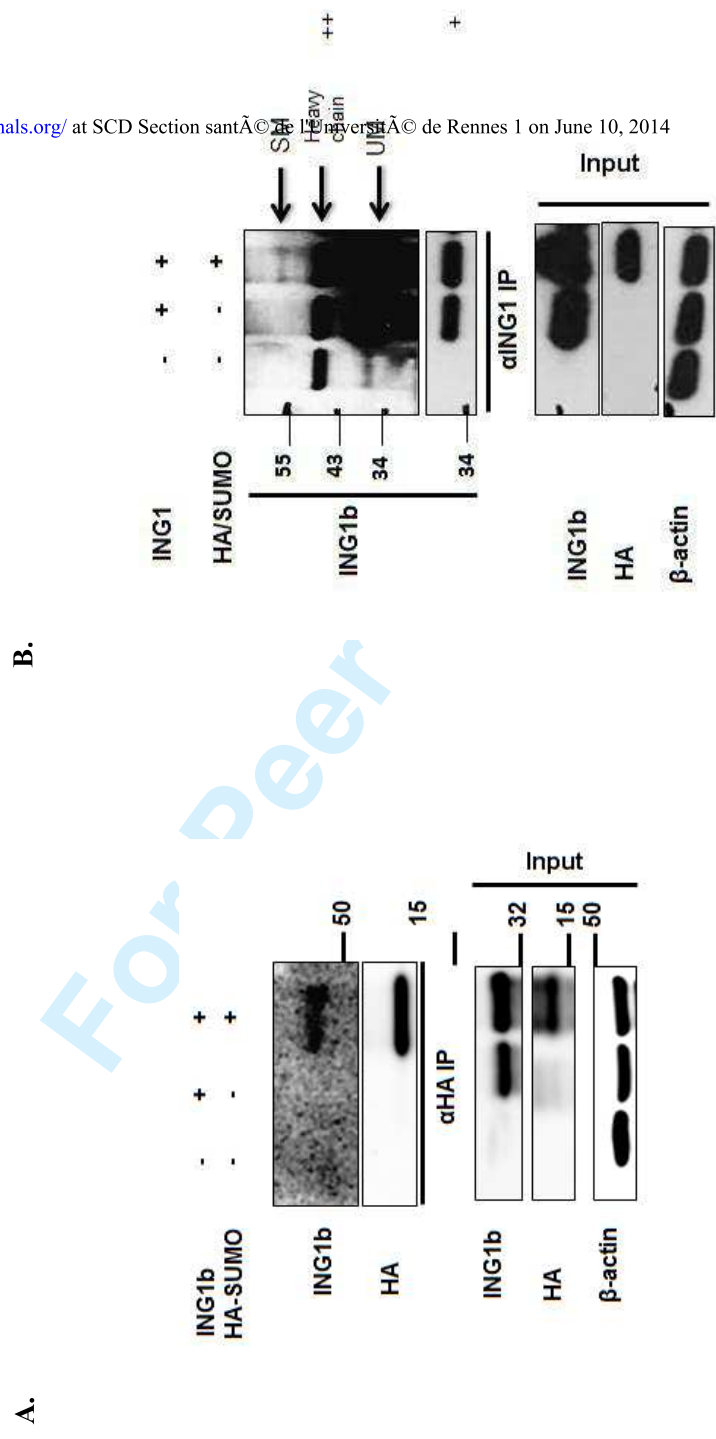
22 **Figure S5** U2OS cell lysates expressing either empty vector, ING1b WT or ING1b E195A were
23 subjected to α Sin3a IP followed by IB with α ING1, α Sin3a and α β -actin to detect ING1b interaction
24 with Sin3a, protein expression and protein loading controls respectively.
25
26
27
28

29
30 **Figure S6** HEK293 cells were transfected with either empty vector, ING1b WT or ING1b E195A and
31 assessed for apoptosis (**A**) and cell cycle (**B**) by flow cytometry 48 hours later. **A.** Apoptosis was
32 evaluated by the use of active caspase-3 staining. Bar graph represents the percentage of positive active
33 caspase 3 cells \pm SD. (* $P < 0.05$; ** $P < 0.01$; *** $P < 0.001$; NS, not significant). **B.** Cell cycle was
34 analyzed by visualization of DNA content stained with DAPI.
35
36
37
38
39
40
41
42

43 **Figure S7 A.** Efficiency of immunoprecipitations in ChIP experiments. *ISG15* (**A**) and *DGCR8*
44 promoters (**B**) were immunoprecipitated with ING1 or IgG antibodies from U2OS cells expressing
45 empty vector, pcDNA/ING1b and pcDNA/ING1b E195A \pm SD. In (**A**) and (**B**), ING1b
46 immunoprecipitations were significantly greater than IgG immunoprecipitations following an ING1b
47 WT induced expression. (* $p < 0.05$; ** $p < 0.01$; *** $p < 0.001$; NS, not significant).
48
49
50
51
52
53
54
55
56
57
58
59
60

Supplemental figures with legends:

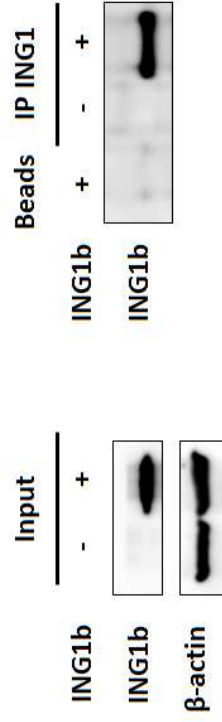
FigureS1



Downloaded from <http://carcin.oxfordjournals.org/> at SCD Section sant'Anne d'Angers Université de Rennes 1 on June 10, 2014

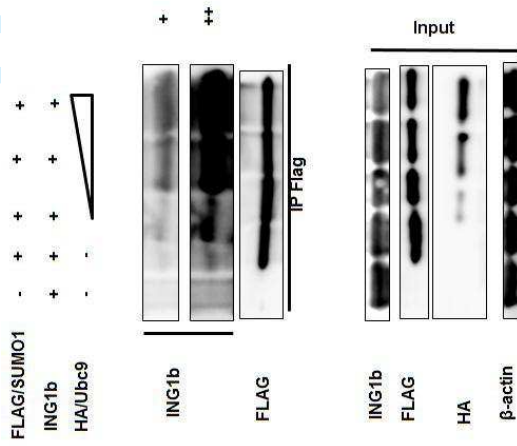
Downloaded from <http://carcin.oxfordjournals.org/> at SCD Section santÃ© de l'UniversitÃ© de Rennes 1 on June 10, 2014

C.

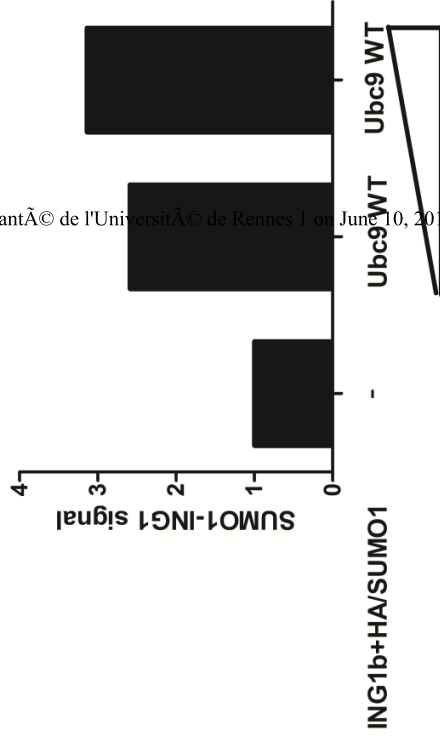


FigureS2

A.



B.

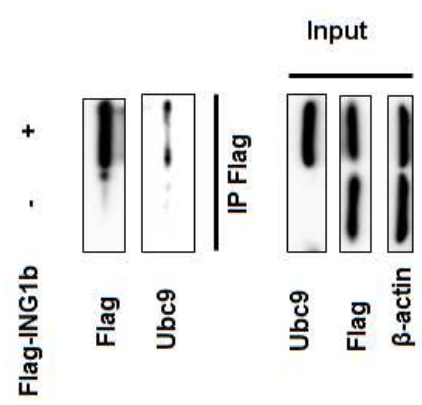


Downloaded from <http://carcin.oxfordjournals.org/> at SCD Section santÃ© de l'UniversitÃ© de Rennes 1 on June 10, 2014

For Peer

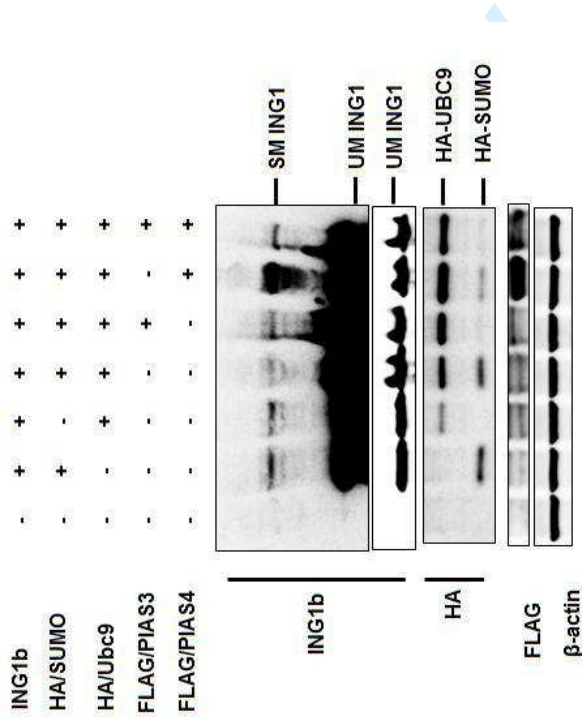
Downloaded from <http://carcin.oxfordjournals.org/> at SCD Section santÃ© de l'UniversitÃ© de Rennes 1 on June 10, 2014

C.



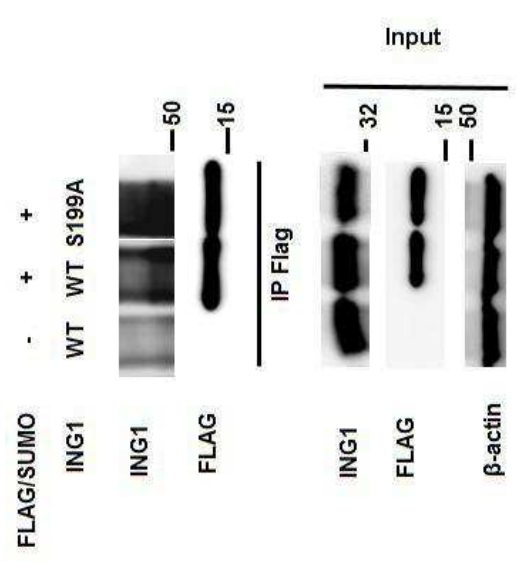
Review

Figure S3



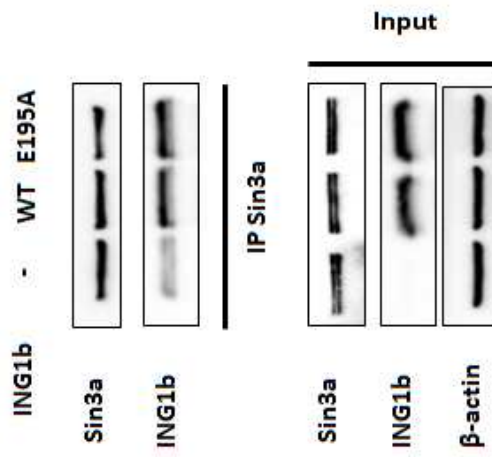
Downloaded from <http://carcin.oxfordjournals.org/> at SCD Section santÃ© de l'UniversitÃ© de Rennes 1 on June 10, 2014

Figure S4



1
2
3
4
5
6
7
8
9
10
11
12
13
14
15
16
17
18
19
20
21
22
23
24
25
26
27
28
29
30
31
32
33
34
35
36
37
38
39
40
41
42
43
44
45
46
47
48
49

Figure S5



1
2
3
4
5
6
7
8
9
10
11
12
13
14
15
16
17
18
19
20
21
22
23
24
25
26
27
28
29
30
31
32
33
34
35
36
37
38
39
40
41
42
43
44
45
46
47
48
49

Downloaded from <http://carcin.oxfordjournals.org/> at SCD Section santÃ© de l'UniversitÃ© de Rennes 1 on June 10, 2014

Figure S6

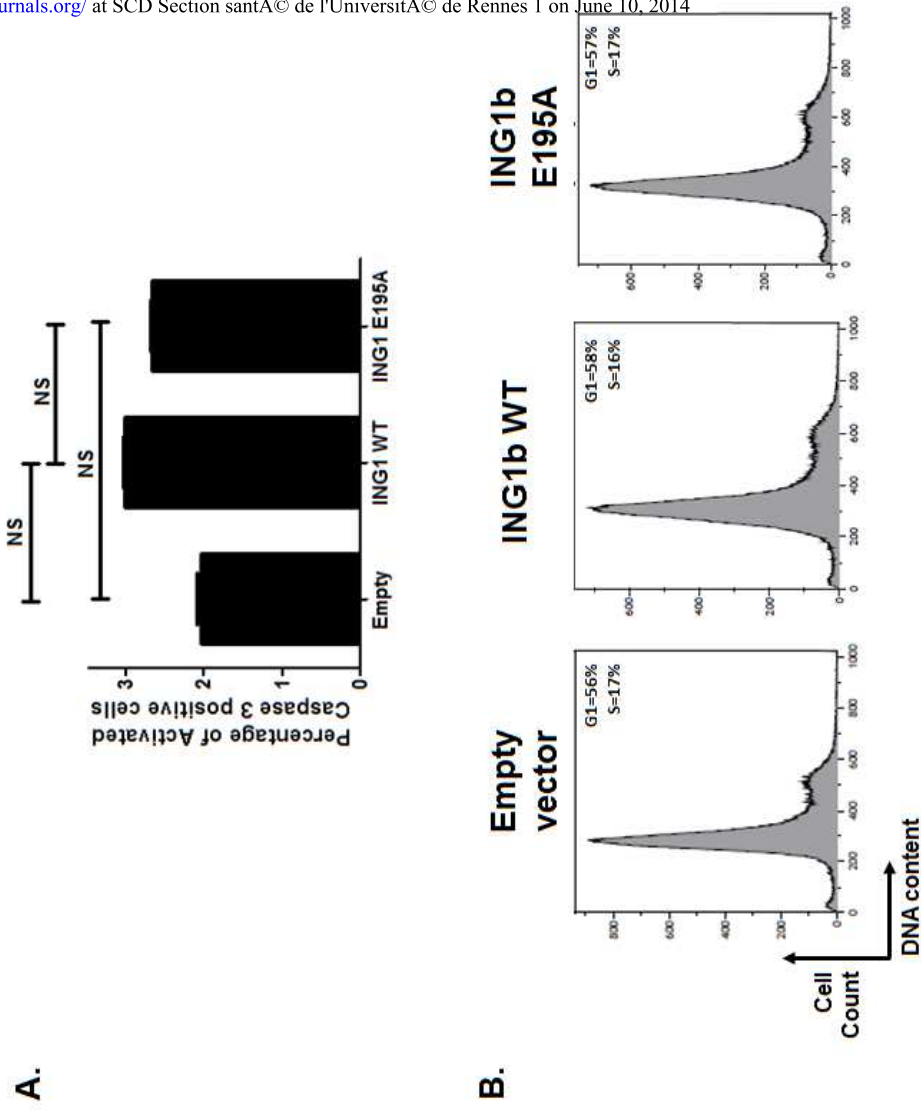
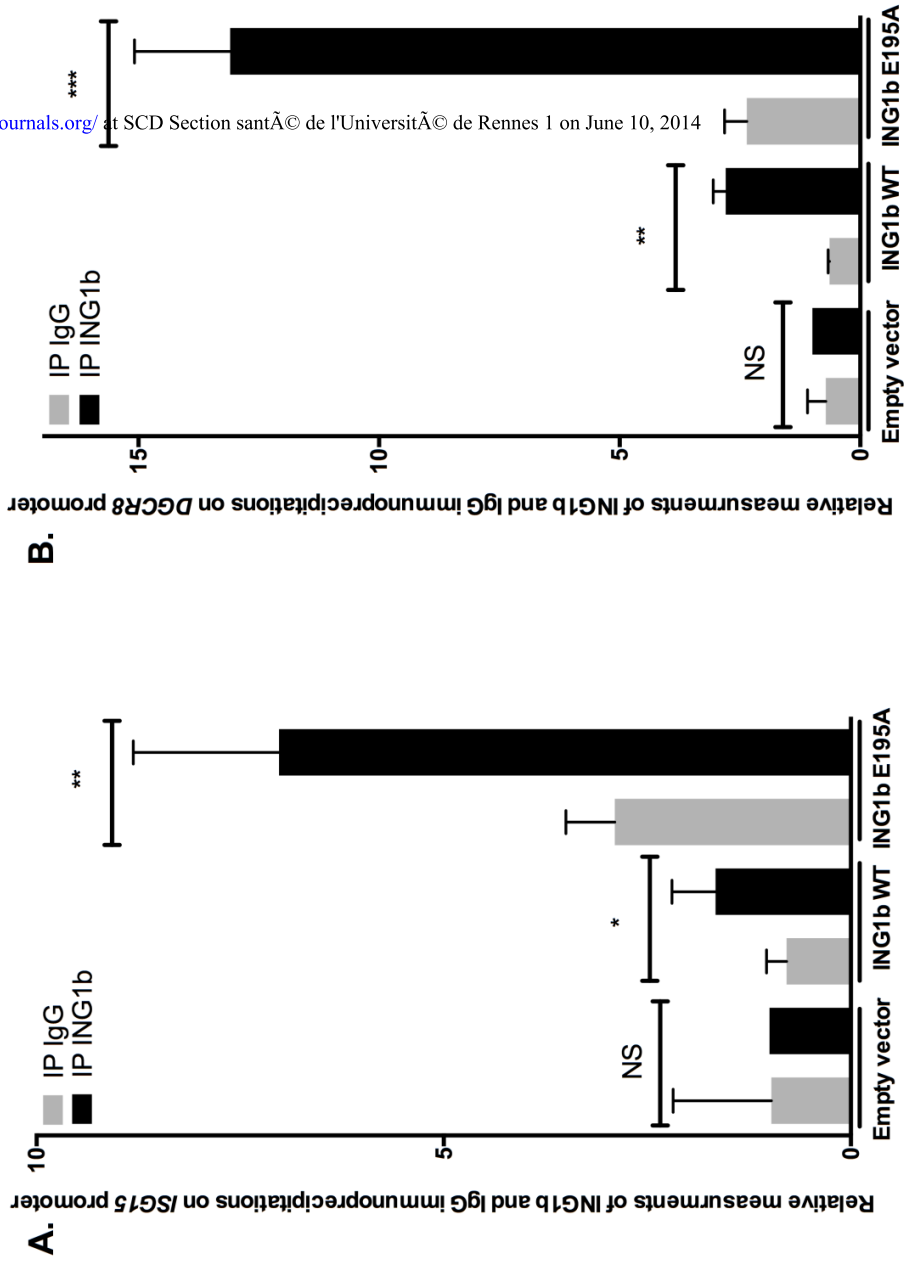


Figure S7



Downloaded from <http://carcin.oxfordjournals.org/> at SCD Section santÃ© de l'UniversitÃ© de Rennes 1 on June 10, 2014