



HAL
open science

Acclimation of earthworms to chemicals in anthropogenic landscapes, physiological mechanisms and soil ecological implications

Nicolas Givaudan, Claudia Wiegand, Barbara Le Bot, David Renault, Frédérique Pallois, Stéphanie Llopis, Françoise Binet

► To cite this version:

Nicolas Givaudan, Claudia Wiegand, Barbara Le Bot, David Renault, Frédérique Pallois, et al.. Acclimation of earthworms to chemicals in anthropogenic landscapes, physiological mechanisms and soil ecological implications. *Soil Biology and Biochemistry*, 2014, 79, pp.49-58. 10.1016/j.soilbio.2014.01.032 . hal-01005821

HAL Id: hal-01005821

<https://univ-rennes.hal.science/hal-01005821>

Submitted on 13 Jun 2014

HAL is a multi-disciplinary open access archive for the deposit and dissemination of scientific research documents, whether they are published or not. The documents may come from teaching and research institutions in France or abroad, or from public or private research centers.

L'archive ouverte pluridisciplinaire **HAL**, est destinée au dépôt et à la diffusion de documents scientifiques de niveau recherche, publiés ou non, émanant des établissements d'enseignement et de recherche français ou étrangers, des laboratoires publics ou privés.

1 **Acclimation of earthworms to chemicals in anthropogenic landscapes, physiological**
2 **mechanisms and soil ecological implications**

3
4 Nicolas Givaudan ^{a,b,c}, Claudia Wiegand^{a,b,c}, Barbara Le Bot^{b,d,e}, David Renault ^{a,b}, Frédérique
5 Pallois ^{a,b}, Stéphanie Llopis ^{a,b}, Françoise Binet ^{*a,b}

6
7 a) University Rennes 1, UMR CNRS Ecobio 6553, Campus de Beaulieu, 265 Avenue du
8 Général Leclerc, 35042 Rennes Cedex, France

9 b) Université Européenne de Bretagne (UEB), 5 Boulevard Laënnec, 35000 Rennes,
10 France

11 c) University of Southern Denmark, Institute of Biology, Campusvej 55, 5230 Odense
12 M, Denmark

13 d) EHESP Rennes, Sorbonne Paris Cité, Avenue du Professeur Léon Benard, CS74312,
14 35043 Rennes Cedex, France

15 e) Inserm, U 1085, IRSET, LERES, Avenue du Professeur Léon Benard, CS74312,
16 35043 Rennes Cedex, France

17
18 * Corresponding author: at University Rennes 1, UMR CNRS Ecobio 6553, Campus de
19 Beaulieu, 265 Avenue du Général Leclerc, 35042 Rennes Cedex, France. Phone :
20 +33223236665, Fax : +3323236828

21
22
23
24

25 Email addresses :

26 nicolas.givaudan@univ-rennes1.fr (N. Givaudan)

27 wiegand@biology.sdu.dk (C. Wiegand)

28 Barbara.LeBot@ehesp.fr (B. Le Bot)

29 david.renault@univ-rennes1.fr (D. Renault)

30 frederique.pallois@univ-rennes1.fr (F. Pallois)

31 stephanie.llopis@univ-rennes1.fr (S. Llopis)

32 francoise.binet@univ-rennes1.fr (F. Binet)

33
34

35 **Summary**

36 Because earthworms sustain soil functioning and fertility, there is a need to advance the
37 knowledge of their adaptation potential to chemicals in anthropogenic landscapes. Our
38 hypothesis is that there is acclimation to organic chemicals (pesticides) in earthworms that
39 durably persist under conventional farming in anthropogenic landscapes. The adaptation
40 capability of two populations of earthworms (*Aporectodea caliginosa*) having a different
41 chemical exposure history, - one originating from 20 years of organic farming
42 (naïve population) and another from 20 years of conventional farming (pre-exposed
43 population)- to cope with soil organic pollutant (Opus®, epoxiconazole a worldwide used
44 fungicide) were investigated. Several complementary metabolic and energetic endpoints were
45 followed, and cast production was assessed as a behavioral biomarker related to earthworms
46 ecological role for the soil. Basal metabolism reflected by respiration rate was increased in
47 both fungicide-exposed worms compared to controls. Glycogen resources were decreased in
48 the same proportion in the two populations but more rapidly for the naïve (7 days) than for the
49 pre-exposed population (28 days). Soluble protein and most amino-acids contents increased in
50 the pre-exposed population only, suggesting a detoxification mechanism. Metabolomic
51 profiles showed a cut-off between fungicide-exposed and control groups in the pre-exposed
52 earthworms only, with an increase in most of the metabolites. Exposure to a low dose of
53 epoxiconazole increased cast production of pre-exposed earthworms, and this resulted in an
54 increase in pesticide disappearance. As far as we know, this is the first study which evidenced
55 there is an acclimation to an agricultural chemical in earthworms derived from conventional
56 farming that also relates to a change in their burrowing behaviour, and for which larger
57 consequences for the soil ecosystem need to be addressed. This original finding is of major
58 interest in the frame of ecosystem resilience to global changes. Whether this physiological
59 adaptation is a general pattern of response against fungicides or other pesticides would need
60 to be confirmed with other molecules and agricultural contexts.

61

62

63 **Keywords**

64 Land-use, Epoxiconazole, Earthworm adaptation, Energy storage, Metabolomic profile, Soil
65 bioturbation

66

67

68

70 **1. Introduction**

71 Often representing the largest animal biomass, earthworms are present in most terrestrial
72 ecosystems and are considered as efficient ecosystem engineers as they actively modify the
73 physical, chemical and biological properties of the soil (Binet et al., 1998; Bottinelli et al.,
74 2010; Jones et al., 1997; Monard et al., 2008). They sustain several key ecosystem services by
75 enhancing soil structure and nutrient cycling, and play a role in ecosystemic services such as
76 water regulation, pollution remediation and primary production (Blouin et al., 2013). In
77 anthropogenic landscapes, soil biodiversity and mainly earthworm communities have to face
78 disturbances by intensive land-use due to agricultural practices such as ploughing and tillage,
79 application of fertilizers and chemical pesticides (Paoletti, 1999; Thompson, 1971). The soil
80 compartment is the primary sink for agricultural pesticides, as they are frequently applied
81 several times a year. Concerning fungicides, a large part either do not reach its plant target, or is
82 washed off from treated foliage, leading to major losses to the soil. Bromilow *et*
83 *al.* (1999a) reported in a field study that only 30% of the fungicide sprays were intercepted by
84 the barley crop. The frequent application of agricultural pesticides and the persistence of some
85 of them eventually leads to increasing amounts of residual compounds in the soil, either as
86 free or bound residues (Gevao et al., 2000; Mordaunt et al., 2005), which can be a threat to
87 lumbricid species. It has been shown that abundance and diversity of earthworm
88 communities are dramatically reduced by chemical and mechanical stress (Decaëns and
89 Jiménez, 2002; Smith et al., 2008). Despite these impacts however, worm populations persist
90 in conventionally (with pesticides usage) cropped fields, albeit in reduced numbers. Assuming
91 that immigration rate is low in earthworm populations (Lavelle and Spain, 2001), this suggests
92 that earthworm populations living in pesticide-polluted soils can cope with chronic chemical
93 stress, either via avoidance behaviour or physiological resistance (Posthuma and Van
94 Straalen, 1993).

95 A chronic exposure to contaminants for generations may allow adaptation to take place, by
96 favouring individuals that are able to face them. Physiological adaptation, e.g. acclimation,
97 implies that individuals have acquired a degree of tolerance after a pre-exposure to chemicals
98 at some point of their life, which can be lost within a generation. Genetic adaptation to
99 xenobiotics implies constitutive and hereditary mechanisms allowing tolerance such as
100 overproduction of specific compounds, (Brausch and Smith, 2009), or alteration of a target or
101 receptor (Fournier and Mutero, 1994). Such adaptations to metals have been studied in
102 terrestrial invertebrates including earthworms (Donker et al., 1993; Gudbrandsen et al., 2007;

103 Posthuma, 1990). However to the extent of our knowledge no attempt has been made to
104 evaluate adaptation processes in earthworms against organic pesticides.

105 Adaptation, either via physiological or genetically-mediated mechanisms, is an expression of
106 the speciesecological plasticity allowing protection against stresses. However, it is known to
107 be costly in terms of metabolism and energy usage, especially when it involves over-
108 production of compounds such as protection enzymes (Calow, 1991). Increased metabolic
109 rate or increased energy allocation to detoxification mechanisms can be at the detriment of
110 energy storage, and thus impair other functions such as reproduction and growth (Jansen et al.,
111 2011; Yasmin and D'Souza, 2010). This is particularly important when animals are exposed to
112 low but chronic exposures, such as earthworms in agricultural fields, due to the persistence of
113 residues of pesticides in the soils for several years after application (Gevao et al.,
114 2000). Available energy resources, as measured by main storage compounds, can then reflect
115 energy demands associated with different adaptation strategies. In the earthworm
116 *Dendrobaena octaedra*, Holmstrup et al. (2011) reported high energetic costs reflected by
117 glycogen depletion of the internal regulation of Al and Ni metals. On a lower level of
118 organization, and possibly on a shorter timescale, metabolomics have recently been used in
119 ecotoxicology studies to investigate the responses of the metabolism to contaminants (Brown
120 et al., 2010; Bundy et al., 2008; Simpson and McKelvie, 2009), and we think they can be a
121 valuable tool to study adaptation to contaminants.

122 One of the most common cultures in Brittany (France) is winter wheat, with a mean number
123 of 6 pesticides applications per year, the majority of them being fungicides (Agreste, 2006).
124 In particular, members of the triazole family, which act by inhibiting the biosynthesis of
125 ergosterol, have attracted interest because of their high persistency in soils (Bromilow et al.,
126 1999a, 1999b; Passeport et al., 2011), although data available on their toxicity is still scarce.

127 The toxicity of some fungicides, such as benomyl and carbendazim has been investigated in a
128 few studies in earthworms and enchytraeids, another important member of the soil biota.
129 Avoidance behaviour was reported in Enchytraeids following exposure to benomyl and
130 Carbendazim (Amorim et al., 2005). Holmstrup (2000) also reported a decrease of
131 reproductive rate in the earthworm *Aporrectodea longa* associated with a reduction in the
132 whole earthworm population.

133 Our aim was to test the hypothesis that earthworms inhabiting soil under conventional land-
134 use have acquired tolerance to face the regularly applied fungicide epoxiconazole. The
135 response of in situ pre-exposed versus naïve earthworms when exposed to an environmentally
136 relevant dose of the fungicide were thus studied. We addressed whether an adaptation was

137 quantifiable in terms of main energy resources storage and metabolism (respiration and
138 metabolites levels) by comparing these two pre-exposed and naïve earthworms, and if these
139 physiological changes were associated with change of their soil bioturbation ability. Our
140 results evidenced that there is a physiological adaptation to fungicide in the earthworms
141 originated from the conventional cropped field, leading to a change in their burrowing
142 behaviour and impacting the fate of pesticide in soil.

143

144 **2. Materials and Methods**

145

146 2.1. Earthworm populations, soil and agricultural context

147

148 Earthworms used in this study originated from two agricultural fields, one conventionally
149 cropped and one cropped according to organic agriculture requirements. Both of these fields
150 have been in these agricultural management strategies for more than 20 years and are located
151 in the same agricultural basin (Vézin-le-Coquet, Brittany, France). Soils are slightly acid
152 silt-clay loams (conventional and organic field, respectively: Clay 14.8 % and 16.6 %; Silt
153 71.6 % and 71%; Sand 13.6 % and 12.4 %; organic matter 1.67 % and 2.55 %; pH (water
154 suspension) 6.4 and 6.9). The conventional field had been cropped under rotations of
155 wheat/maize/leguminous for 20 years, and annually treated with pesticides. The fungicide
156 epoxiconazole was used each year a cereal was planted. Epoxiconazole is a triazole fungicide
157 present in two pesticides formulations (OPUS® and OGAM®) and mainly used on wheat. The
158 organic field has been under rotation with a cereal (2 years) / maize (1 year) / lucerne (3 years)
159 without any pesticides for 20 years, and was not tilled during the lucerne periods.

160 Soil used for the exposure experiment was collected from the first 30 cm of a permanent (since
161 1960) organic pasture (17.6% clay, 69.3 % silt, 13.1% sand, 4.0 % organic matter, pH (water
162 suspension) 6.0) located in the same area where no initial epoxiconazole residuals were
163 detected (see method in 2.3). Upon retrieval, it was air-dried until it reached 14% of humidity,
164 then sieved to remove all soil particles larger than 2 mm and kept in sealed containers (100
165 l) until used for the experiment.

166 The endogeic species *Aporretodea caliginosa* was chosen for this experiment. It is an
167 environmentally relevant species for toxicological tests, since it is commonly found in
168 agricultural fields and reported as a dominant species (Jordan et al., 2004; Lamandé et al.,
169 2003; Nuutinen, 1992; Söchtig and Larink, 1992). Most standard ecotoxicity tests are
170 conducted on epigeic species mainly with *Eisenia fetida* or *Eisenia andrei*, but these species

171 lack ecological relevance since they are usually absent from agricultural fields (Dittbrenner et
172 al., 2010). Earthworms were collected by hand-sorting at the beginning of Spring 2012 from
173 the two fields. Adults (presence of a fully developed clitellum) and sub-adults (presence of
174 tubercula pubertatis) were used and individual weights were recorded (Table 1). Upon
175 collection, they were brought back to the laboratory and maintained in the soil collected from
176 the field at 25% humidity until start of fungicide exposure. Before the experiment, the
177 earthworms were acclimatized for 14 days in the test soil in the climatic room used for the
178 experiment (Conviron GR96; temperature: 15°C; day/night cycle: 16/8h; humidity: 80 ± 5%).

179

180 2.2. Experimental setup

181 Soil contamination: Epoxiconazole was applied as commercial formulation OPUS® (125 g
182 active ingredient l⁻¹, obtained from Bayer Crop Science) diluted in distilled water at 0.1 µg g⁻¹
183 soil, which is equivalent to a predicted field concentration calculated for a field application
184 rate of 125 g ha⁻¹ assuming a single application with a homogenous distribution and no crop
185 interception in the top 5 cm of the soil (Dittbrenner et al., 2010). Soil spiking was conducted
186 by manually adding 175 ml of the diluted pesticide solution or distilled water (for the
187 controls) on each 2 kg of soil at 14% water content (1.75 kg dry weight) reaching a final soil
188 water content of 24%. To insure homogeneity of pesticide distribution in the soil, the solution
189 was added in two parts, the soil being thoroughly mixed, sieved using a 2 mm
190 aperture and redispersed as a fine layer. Soil microcosms consisted of polycarbonate boxes
191 (80mm x 50mm, Caubère, Yebles, France) with a lid pierced with tiny holes to ensure
192 sufficient aeration. The microcosms were filled with 100 g of contaminated or control soil,
193 then 0.2 g of dry grass meal was added to the surface of the soil. Then the microcosms were
194 left two days in a cool dark room to ensure aeration of the soil after re-humidification. Water
195 content was checked again in 3 additional control boxes and adjusted to 25% prior to
196 introduction of animals, then checked again each week.

197 Experimental design: The experimental design is described in table 1. It comprised 11
198 specimens from each population (pre-exposed and naïve) for each treatment (epoxiconazole or
199 control) and sampling time (7 and 28 days) plus an initial control group at day 0 (unexposed).
200 Prior start of exposure, each earthworm was rinsed in tap water, gently dried on filter paper,
201 weighed and placed in individual Petri dishes for 48 hours for gut voiding. Then animals were
202 transferred individually to the exposure microcosms (day 0) according to a size-class
203 procedure, insuring a similar mean earthworm weight in each treatment. Soil was spiked with
204 epoxiconazole at 0.15 µg g⁻¹ soil or control soil. Exposure lasted for 7 and 28 days, with an

205 initial control group of 11 individuals for each population (unexposed worms) at day 0. At
 206 each sampling date, before use of the microcosms for cast production (see 2.5) and pesticide
 207 measurements (see 2.3), earthworms were removed from the soil taking care not to break the
 208 casts. 5 of them were used for respirometry assessment (2.4), energy resources (2.6), and
 209 metabolites measurements (2.7). The other 6 earthworms were used for enzyme activities
 210 measurements in another study and will not be considered here. After the worms have been
 211 sampled, 8 microcosms were used for cast production measurements, and 3 for pesticide
 212 analysis.

213 In addition, eight uncontaminated soil microcosms without worms were used as controls for
 214 the cast production test to assess the potential formation of non-biogenic aggregates at 7 and
 215 28 days. Another 3 soil microcosms were filled with contaminated soil to track the fate of
 216 pesticide without the presence of worms. Humidity control was conducted in 3 additional,
 217 non-contaminated soil microcosms, in order to adjust humidity when necessary.

218

		worms at start	Sampling days and number of worms sampled			treatment
			0	7	28	
Microcosms containing one earthworm	Pre-exposed population (conventional field)	33	11	11	11	CTRL
		22	0	11	11	EPOXI
	"Naïve" population (organic field)	33	11	11	11	CTRL
		22	0	11	11	EPOXI
Microcosms without earthworm	Control microcosms for cast production	0	8	8	8	CTRL
	Control microcosms for pesticide dissipation	0	3	3	3	EPOXI
	Control microcosms for humidity check	0	3	3	3	CTRL

219 Table 1: Experimental design of the laboratory exposure. Out of each group of 11 microcosms containing one
 220 earthworm, 5 randomly picked worms were used for respirometry assessment, energy resources, and metabolite
 221 measurements.

222

223 2.3. Pesticide concentration in soil

224

225 Sub-samples of 2g of soil were retrieved the day of the pollution (day 0), and after 7 and 28
 226 days, from three randomly chosen microcosms out of the 11 replicates. They were dried at
 227 30°C overnight, then kept frozen until pesticide analysis. Epoxiconazole in soil sub-samples
 228 was measured by liquid chromatography coupled with mass spectrometer (LC-MS) (Waters
 229 alliance 2690, Waters, Saint Quentin en Yvelines, France). 2g of soil sample were extracted in
 230 500 ml of mineral water. After 15 min of ultrasound treatment, the sample was mixed by

231 rotary shaking for one hour, and subjected to another 15 min of ultrasound treatment. 0.25 µg
232 of triadimenol was added as internal standard and 1 ml of analytical-grade nitric acid (HNO₃)
233 to acidify the mixture. Then pesticides were extracted from the aqueous mixture in two steps
234 with 25 ml of HPLC-grade dichloromethane followed by 15 min of agitation. The
235 dichloromethane extracts were combined and evaporated to a drop (ca. 10 µl), then 500 µl
236 acetonitrile were added and 0.25 µg of pentabromophenol were added as second internal
237 standard. The extract was evaporated again to a drop and adjusted to 500 µl with 10%
238 acetonitrile acidified (0.1 % formic acid).

239 This sample was analysed by LC-MS using a high-performance liquid chromatography
240 (Alliance 2695, Waters, Saint Quentin en Yvelines, France) coupled to a quadrupole mass
241 spectrometer model ZQ (Waters-Micromass, Saint Quentin en Yvelines, France) equipped
242 with an electrospray source. Epoxiconazole was separated on a X Terra MS C18 column (150
243 x 2.1 mm, 3.5 mm particle size, Waters, Saint Quentin en Yvelines, France) at 35 °C. A
244 binary mobile phase gradient (A: ultrapure water with 0.1% formic acid; B: acetonitrile with
245 0.1% formic acid) was used for pesticide separation. The chromatographic method held the
246 initial mobile phase composition (82% A, 18% B) constant for 10 min, followed by 70% A /
247 30% B (10min), 50% A / 50% B (15 min), 20% A-80% B (5 min), then again 82% A / 18% B
248 for 10 min. Quantification limit was 2.5 ng.g⁻¹ dry soil and extraction yield was 75 ± 7%. A
249 standard curve of epoxiconazole was made with several aliquots of 2 g of dry soil (the same
250 uncontaminated pasture soil used for the microcosms) spiked manually with the purified
251 compound, air-dried for two hours, and extracted the same way as the real samples for
252 quantification, relating to the two internal standards. Pesticides analytical standards were
253 purchased from Dr Ehrenstorfer (Ausburg, Germany).

254 Recovery of epoxiconazole in spiked soil was initially 80% of the desired concentration (0.1
255 µg.g⁻¹), with a coefficient of variation of 10%, which was considered highly satisfactory, as
256 we used the commercial formulation of the pesticide. Concentrations of epoxiconazole in soil
257 (Table 2) were still two thirds of the initial concentration after 28 days, which is consistent
258 with the long persistencies (half-life > two years) reported in the literature (Bromilow et al.,
259 1999a, 1999b; Liang et al., 2012).

260

261 2.4. Respirometry measurements

262

263 After 7 and 28 days of exposure, earthworms were removed from the soil microcosm, rinsed,
264 gently blotted dry on filter paper, weighed and left 24 hours in a 250 ml glass jar on a moist

265 filter paper for gut voiding. Thereafter, the glass jar was hermetically closed for two hours,
266 and CO₂ was measured by a Micro-Gas Chromatograph (3000A, SRA Instruments) equipped
267 with a single capillary column Poraplot U and coupled with a thermal conductivity detector.
268 Then the worm was frozen in liquid nitrogen for further measurements of energy resources
269 (2.6) and metabolomics (2.7).

270

271 2.5. Cast production

272

273 Cast production was measured in the soil of 8 microcosms out of the 11 replicates. The cast
274 production test was conducted according to the protocol of Capowiez et al. (2010) but using a
275 sieve of mesh size 2mm. Soil of the microcosms were dried at 40°C overnight, and sieved by
276 shaking the sieve consistently for 10 s.

277

278 2.6. Energy resources measurement

279

280 Frozen worms were freeze-dried, and ground to a fine powder by multiple 30 sec agitations
281 with inox beads in 2 ml test tubes in a bead-beater (Retsch MM400, Retsch GbmH, Haan,
282 Germany). Each ground sample was separated in several aliquots, 2 mg for total lipids, 5mg
283 for soluble proteins, and 2 x 10 mg for glycogen and metabolites measurements. Lipid
284 aliquots were extracted according to Folch(1957), lipids in the chloroform extract were
285 assayed by the sulfo-vanillin method with a calibration curve of commercial vegetable oil at
286 525 nm. Proteins aliquots were homogenized in 0.1 M phosphate buffer (pH 6.5), centrifuged
287 and measured according to Bradford (1976) using a calibration curve of bovine serum
288 albumin. Glycogen was measured according to the method of Nicolai *et al*(2012). Briefly,
289 aliquots were homogenized in 600 µl trichloroacetic acid (4%) and centrifuged at 5000 G
290 (rotor N° 12145, SIGMA, 8000 rpm) for 10 minutes. Then 500 µl of supernatant was
291 recovered and glycogen was precipitated by adding 1.5 ml of ethanol and stirring for 10
292 minutes. The extract was centrifuged (5000 G) and the ethanol eliminated with a glass pipette.
293 The pellet was washed with 2ml ethanol, then the remaining ethanol was totally evaporated at
294 70°C. The pellet was redissolved by stirring it overnight in ultrapure water, and centrifuged
295 again. Absorbance was measured at 425 nm with a microplate reader (Fischer Scientific
296 Multiskan FC) after addition of Lugol using a calibration curve of purified glycogen (Oyster
297 type II, Sigma).

298

299 2.7. Metabolomics

300 2.7.1. Sample extraction and derivatization

301

302 Metabolite extraction was conducted according to Khodayari *et al*(2013). The freeze-dried
303 and ground sample was homogenized in 600 μL of cold ($-20\text{ }^{\circ}\text{C}$) methanol–chloroform (2:1)
304 using a bead-beating device (Retsch MM301, Retsch GbmH, Haan, Germany). 400 μL of ice-
305 cold ultrapure water was subsequently added, and each sample was stirred. After
306 centrifugation at 4000 G for 10 min at $4\text{ }^{\circ}\text{C}$, 300 μL of the upper aqueous phase, containing
307 polar metabolites, were transferred to new chromatographic vials and vacuum-dried using a
308 Speed Vac Concentrator (MiVac, Genevac Ltd., Ipswich, England). The dried extracts were
309 then redissolved in 15 μL of $20\text{ mg}\cdot\text{mL}^{-1}$ methoxyaminehydrochloride (Sigma-Aldrich, St.
310 Louis, MO, USA) in pyridine, incubated under automatic orbital shaking at $40\text{ }^{\circ}\text{C}$ for 90 min
311 prior to derivatization. Then, 15 μL of N-methyl-N-(trimethylsilyl) trifluoroacetamide
312 (MSTFA; Sigma) was added, and derivatization was conducted at $40\text{ }^{\circ}\text{C}$ for 45 min under
313 agitation. The derivatization process was automatized using a CTC CombiPal autosampler
314 (GERSTEL GmbH and Co.K.G, Mülheim an der Ruhr, Germany).

315

316 2.7.2. GC-MS analyses

317

318 Gas chromatography coupled with mass spectrometry (GC–MS) was used to measure up to 58
319 small metabolites belonging to different classes of molecules: amino-acids, polyols, sugars,
320 intermediates of the citric acid cycle and other unclassified biological molecules. The GC–MS
321 system was comprised of a Trace GC Ultra chromatograph, and a Trace DSQII quadrupole
322 mass spectrometer (Thermo Fischer Scientific Inc, Waltham, MA, USA). The injector
323 temperature was set at $250\text{ }^{\circ}\text{C}$. The oven temperature was increased from $70\text{ }^{\circ}\text{C}$ to $170\text{ }^{\circ}\text{C}$ at
324 $5\text{ }^{\circ}\text{C}\text{ min}^{-1}$, from 170 to $280\text{ }^{\circ}\text{C}$ at $7\text{ }^{\circ}\text{C}\text{ min}^{-1}$, from 280 to $320\text{ }^{\circ}\text{C}$ at $15\text{ }^{\circ}\text{C}\text{ min}^{-1}$, then the oven
325 remained for 4 min at $320\text{ }^{\circ}\text{C}$. A 30 m fused silica column (TR5 MS, I.D. 2.5 mm, 95%
326 dimethyl siloxane, 5% Phenyl Polysilphenylene–siloxane) was used, with helium as the
327 carrier gas at a rate of $1\text{ mL}\cdot\text{min}^{-1}$. One microliter of each sample was injected using the split
328 mode (split ratio: 25:1). We completely randomized the injection of the samples. The
329 temperature of the ion source was set at $250\text{ }^{\circ}\text{C}$ and the MS transfer line at $300\text{ }^{\circ}\text{C}$. Detection
330 was achieved using MS detection in electronic impact (EI). We used the selective ion-
331 monitoring mode (SIM) (electron energy: -70 eV), allowing a precise annotation of the
332 detected peaks. The peaks were identified according to both their mass spectra (two ions) and

333 their retention times. Metabolite levels were quantified, if above their quantification limits,
334 according to calibration curves made with 58 pure reference compounds, including the
335 internal standard. Chromatograms were integrated using XCalibur v2.0.7 software (Thermo
336 Fischer Scientific Inc, Waltham, MA, USA).

337

338 2.8. Statistical analyses

339

340 For both populations, the effect of epoxiconazole compared to control groups, or mean
341 differences between populations, either on respiration, energy storage or cast production was
342 tested by student-t-tests at each sampling time. The disappearance of pesticide in the soil was
343 tested by one-way ANOVA with time as factor for soils containing pre-exposed, naïve and no
344 earthworms, followed by post-hoc tests according to the Tukey procedure. On the
345 metabolomics data, two principal component analyses (PCA) were performed on each
346 population as separate datasets on log-transformed and standardized variables. Three axes,
347 explaining 70% of variability, were kept for interpretation. The variables Serine and
348 Threonine were highly correlated (94%) so their arithmetic sum was used in a single variable,
349 so as not to hamper the results of the PCAs. A classification of the metabolites into
350 “functional biochemical groups” was done following Bundy *et al*(2008) and based on
351 biochemical knowledge. Amino-acids were classified either as lipophilic, hydrophilic or
352 neutral. Regarding the metabolite functional group responses to epoxiconazole, significant
353 differences between control and exposed worms for each metabolite were tested by student-t-
354 tests at 7 and 28 days. Significance level for student-t-tests was set at $p \leq 0.1$. All analyses
355 were conducted using the statistical software of “R 2.12.1” for Macintosh (R Development
356 Core Team, 2008).

357

358 3. Results

359

360 3.1. Energy dissipation

361

362 Fungicide treatment increased CO₂ production in both pre-exposed and naïve populations
363 after 7 and 28 days compared to their non-treated controls (Fig 1). Respiration rate in the
364 fungicide-treated group was higher after 7 and 28 days compared to day 0 in the pre-exposed
365 population. Differences became significant between populations at 28 days, where

366 metabolic rates of the pre-exposed population (both exposed and control groups) were still
367 higher than at the outset, while it remained constant in the naïve population from day 7 to 28.

368

369 3.2. Cast production (CP)

370 The weight of casts (g of dry cast day⁻¹) correlated linearly and positively to earthworm
371 weights at 7 and 28 days ($R^2=0.34$; $p<0.001$ and $R^2=0.33$; $p<0.05$, respectively, all modalities
372 mixed). The cast production was then calculated as weight difference of non-biogenic
373 aggregates retained in the sieve from the 8 control (without worms) microcosms to the ones
374 with worms and expressed per gram of fresh worm. Worms from both populations displayed
375 similar patterns with constant CP over time in control soil microcosm and significantly
376 changed CP with fungicide treatment (Figure 2). Application of epoxiconazole transiently
377 enhanced CP (7 days) in pre-exposed worms ($p<0.01$), and slightly decreased it, however not
378 significantly, after 28 days in both worm populations.

379

380 3.3. Energy resources

381

382 Mean glycogen content was decreased by nearly 20 mg in fungicide-treated compared to
383 control groups after 7 days in the naïve earthworms, and after 28 days in the pre-exposed
384 earthworms as shown in (Figure 3-A). At the end of the exposure, the worms originating from
385 the conventional-treated field had a slightly lower glycogen tissue level than the naïve ones.

386 The lipid tissue levels (Figure 3-B) did not show any significant differences between un-
387 exposed and fungicide exposed earthworms or between earthworms originating from the
388 conventional or the organic-treated field. Lipid levels were lower in all treated groups
389 compared to their respective controls, however it did not achieve significance. Protein
390 contents (Figure 3-C) decreased similarly in the 4 groups of worms during the first 7
391 days. They were then significantly increased by fungicide treatment in both exposed and
392 naïve populations compared to their respective controls after 28 days, with pre-exposed
393 worms having a final protein amount almost twice as high as naïve ones.

394

395 3.4. Metabolomics

396

396 3.4.1. Metabolic profiles of fungicide-exposed and control populations

397

398 Twenty eight metabolites were detected and quantified in the earthworm tissues. From this
399 dataset, 22 were kept for interpretation (table 1). For the conventional population (Figure 4A),

400 scores plots on axis 2 and 3 showed that the worms exposed for 28 days formed a separate
401 cluster from the 28 days control worms along axis 2 and 3. This pattern was not observed in
402 the organic population (Figure 4B) along any of the three axes, as it seems the time effect is
403 greater than the fungicide effect. Indeed, the exposed and the control groups move in the same
404 way with time, but are not clearly separated.

405

406 3.4.2. Metabolic changes in the worms populations

407

408 In the loadings plots of the PCAs (figure 4C and 4D), several coordinated responses were
409 identifiable. In the conventional population (Figure 4C), the 7 variables that have loadings
410 lower than -0.5 on axis 2 form a first cluster containing mostly lipophilic amino-acids. Another
411 cluster is in the lower half of the plot corresponding to variables having low loadings (roughly,
412 <-0.2) on axis 3, composed of the three sugars, succinate, ornithine, the amino-acids glycine
413 and proline and putrescine. On the other hand in the organic population (Figure 4D), we see
414 two clear clusters that could correspond to the incubation time: the top right corner for seven
415 days and the top left corner for 28 days. Day zero would correspond to the sugars Glu and Rib
416 (lower half). The induced changes in metabolite concentrations after exposure was then
417 measured as normalized concentrations in percentage of the control value and compared
418 according to functional groups (Figure 5). In the conventional worms, several metabolites
419 increased after 28 days of epoxiconazole exposure in all four biochemical groups (amino-
420 acids, sugars, organic acids and ornithine-putrescine), up to 7-fold for aspartate, 4-fold for
421 aminobutyrate, and 2-fold for ornithine and putrescine. This general increase in metabolite
422 levels was not observed in the naïve population, which displayed different trends. Indeed, in
423 Figure 5E, certain amino-acids (Asn, Asp, Phe and Val) increased slightly, whereas
424 others dropped below 100% or stayed stable at 28 days. Not much variation was observed in
425 organic acids of the organic earthworms at 28 days, except for aminobutyrate which dropped to
426 50% of the control value, contrasting to its 4-fold increase in the pre-exposed animals.
427 Putrescine level increased by 2-fold after 28 days in both populations whereas ornithine
428 decreased to below 50% of the control value in the organic population only.

429

430 4. Discussion

431

432 4.1. Acclimation in energetic processes and metabolism

433

434 Animals can tolerate pollutants via biotransformation, excretion or scavenging of free radicals
435 (when pollutants induce oxidative stress). For example, detoxification of several pollutants,
436 e.g. atrazine or paraquat, is mediated via the enzyme Glutathione-S-Transferase. This enzyme,
437 belonging to phase II detoxification mechanisms, acts through binding xenobiotics to
438 glutathione and facilitating its excretion (Anderson and Gronwald, 1991; 2007, 2000).
439 Another common detoxification pathway to xenobiotics is the group of cytochrome p450
440 oxidases. This family of enzymes transform the structure of organic chemicals, hence greatly
441 altering their toxicity (Ribera et al., 2001; Rodríguez-Castellanos and Sanchez-Hernandez,
442 2007). However, no data on epoxiconazole tolerance pathways e.g. detoxification
443 mechanisms was available in the literature.

444 On the other hand, the literature suggests that there are energetic costs in organisms for
445 coping with pollutants (Fisker et al., 2011; Holmstrup et al., 2011; Wiegand et al., 2007). The
446 way organisms handle energetic processes can therefore inform us on adaptation mechanisms.
447 As an example by measuring the main energy resources, Pook et al (2009) showed that a
448 metal-resistant population of marine harbour ragworm (*N. diversicolor*) had a lower scope for
449 growth than a reference (non-resistant) population and demonstrated a metabolic cost, or
450 tradeoff, of resistance. Other tradeoffs can be the co-selection of traits along with tolerance to
451 xenobiotics, such as life history traits. Interestingly, in the conventionally cropped field, the
452 worms sampled had a lower initial mean weight but with constant tissue composition
453 compared to the organic worms (Table 1). This could be a result of the selection of smaller
454 individuals, by the global agricultural management of the field, as a possible combined effect
455 of fertilizers, pesticides and tillage (tillage was less frequent in the organic field due to the
456 lucernecropping). This assumption is supported by the fact that the bigger anecic species such
457 as *L. terrestris* or *A. giardiare* usually the most impacted in cropped soil (Edwards and Bohlen,
458 1996).

459 To investigate such energetic costs, we measured the worm's metabolic rate ($\mu\text{g CO}_2 \text{ g}^{-1}$
460 worm (fresh weight) hour^{-1}) as a proxy of energy dissipation, and the main energy storage
461 compounds which are glycogen (main sugar resource), total proteins and lipids. Metabolic
462 rate was increased in both populations after 7 days of exposure, showing that the fungicide
463 increased metabolic rate, but to a greater extent in the pre-exposed earthworms. Energy
464 dissipation in both control and exposed groups were indeed higher than the naïve earthworms
465 after 28 days. The increase in putrescine and alanine observed in the two populations when
466 exposed suggests a stress response in both groups of earthworms, these two metabolites have
467 previously been suggested as universal biomarkers in metabolomics studies (Groppa and

468 Benavides, 2008; Rhee et al., 2007; Simpson and McKelvie, 2009). However, the increase in
469 most amino-acids contents in the pre-exposed earthworms after 28 days, which is not
470 observed in the naïve animals, indicates a particular metabolic response. Several studies
471 reported that the available resources in amino-acids were at the centre of metabolic activity
472 during stress responses (Krasensky and Jonak, 2012; Lankadurai et al., 2013; Simpson and
473 McKelvie, 2009). Moreover, the increase in alanine, aspartate, aminobutyrate and succinate
474 observed in the pre-exposed populations could indicate an activation of the alanine, aspartate
475 and glutamate pathway (Kanehisa and Goto, 2000).

476 The increase in both metabolic rates was reflected by depletion in the lipid and the glycogen
477 resource. However a temporal delay appeared in the glycogen usage, indicating a differential
478 mobilisation of this sugar resource between naïve and pre-exposed earthworms. The naïve
479 earthworms seem to consume glycogen earlier than the pre-exposed group. Glycogen
480 breakdown is reflected by the slight increase of glucose in fungicide-exposed groups of
481 earthworms after 28 days. Soluble proteins were also significantly higher after 28 days in the
482 pre-exposed worms only, which could indicate the higher synthesis of detoxificationenzymes
483 such as cytochrome p450(Lukkari et al., 2004). Metabolic profiles of control and exposed
484 groups in pre-exposed earthworms became distinct after 28 days, indicating that metabolic
485 networks have been rearranged to maintain internal homeostasis and performance of the
486 organisms.

487 Overall, all these findings show that pre-exposition of earthworms over generations in the
488 conventional farming system has led to physiological adaptation, as evidenced by their higher
489 reaction to the fungicide. Other studies have shown that separation of metabolic signatures
490 (PCA analyses) increase with higher doses of the pollutants, e.g DDT, endosulfan or copper
491 (Bundy et al., 2008; Simpson and McKelvie, 2009). It is likely that, in our study, fungicide
492 recommended application rate corresponds to a low sublethal dose and the differences in
493 metabolic signatures would become clearer with higher concentrations of the pesticide.
494 Nevertheless, the differences observed demonstrate an impact even at this environmentally
495 realistic level. As both populations were selected from fields under long term (20 to 25 years)
496 conventional and organic farming, an adaptation mechanism on the genetic level could be
497 assumed, but would need to be proven.

498

499

500 4.2. The link with earthworm burrowing and the pesticide fate in soil

501 Several studies aimed to correlate biochemical or cellular responses in earthworms to
502 pollutants with ecologically important endpoints. For example, Maboeta et al. (2001) showed
503 that there was a link between decrease in the abundance of field populations of the earthworm
504 *Microchaetus sp.* and decrease in the animals' neutral red retention time (a biomarker of
505 cellular damage). By showing a strong reduction of earthworm growth by pesticides, (1992)
506 postulated that these contaminants were likely to cause a delay in sexual maturity in juveniles
507 and have eventually have an impact on earthworm abundance in the field. However, pesticide
508 impacts on burrowing behavior have only poorly been studied because of the difficulty to
509 visualize or estimate burrowing activity, and few studies have tried to link pollutant impacts
510 at low levels of organisation (cellular, biochemical) with earthworm burrowing (Capowiez et
511 al., 2010; Gupta and Sundararaman, 1991). With regard to the ecological importance of
512 earthworms through the burrowing of the soil, it is likely that, when attempting to assess the
513 ecosystem services rendered by earthworms to the soil, earthworm burrowing behaviour is as
514 important as population numbers as it can have drastic impacts for soil functioning (Capowiez
515 & Bérard 2006).

516 Here, the low dose application of fungicides resulted in an increase in cast production after
517 seven days, which is consistent with the recent results of Dittbrenner et al(2010), where cast
518 production was increased only at the lowest concentration of the pesticide, but decreased at
519 higher doses. The impacts of pesticides on soil bioturbation have been investigated in a few
520 articles using 2D and 3D (X-ray tomography) terraria, cast production method and the
521 avoidance behaviour test. Most of them, except for the paper of Dittbrenner et al (2010), have
522 shown a decrease in activity or an impact on the characteristics of the burrow systems, e.g
523 length, depth, and branching rate (Pelosi et al., 2013). Interestingly, in the present study, the
524 increase in cast production was only observed in the pre-exposed earthworms. Therefore it
525 could suggest that tolerance to this environmentally realistic level of fungicide is associated
526 with a compensatory increased activity. This increase in burrowing behaviour could be
527 induced by the metabolic changes observed in energetic depletion and metabolites
528 rearrangements, similarly to the phenomenon of hormesis (Zhang et al., 2009). An alternative
529 hypothesis would be that it is related to avoidance behaviour, but unsuccessful, as the
530 earthworm is confined to the microcosm, resulting in an increased amount of casts. It is also
531 known that geophagous earthworms are able to alter their burrowing behaviour and display
532 different behaviours (in terms of soil ingestion) when they are feeding on organic matter in
533 the soil or moving through the soil (possibly as part of an avoidance response)(Capowiez and
534 Bérard, 2006; Hugnes et al., 1996). This may lead to reduced cast production in contaminated

535 soils rather than increased cast production but it is dependent on the level of contamination
536 and the contaminant (Dittbrenner et al., 2010).

537 The fate of pesticides in soil can be affected by earthworms bioturbation via several
538 mechanisms. It increases pesticides sorption on soil particles on the long-term, leading to the
539 formations of non-extractable residues. Therefore it can increase the pesticide persistence, as
540 it was previously shown for atrazine (Binet et al., 2006; Farenhorst et al., 2000). On the other
541 hand, earthworms' activity was also reported to stimulate microorganisms activity, and
542 enhance the activity of atrazine- or MCPA-specific bacterial degraders, accelerating its
543 mineralisation (Liu et al., 2011; 2011, 2008). *A. caliginosa* also participated in the breakdown
544 of four fungicides (folpet, fosetyl-Al, metalaxyl, myclobutanil) and two insecticides
545 (Chlorpyrifos-Ethyl and λ -Cyhalothrin) (Schreck et al., 2008). In our study, pesticide
546 concentration is lower in the microcosms containing earthworms from the conventional field
547 (Table 2). The increase in bioturbation observed in these earthworm's microcosms suggest that
548 they play a part in the pesticide's disappearance either by enhancing sorption or by enhancing
549 microbial mineralization of epoxiconazole.

550

551 **5. Conclusion**

552 This study shows that an environmentally realistic concentration of epoxiconazole applied as
553 OPUS® induced distinct physiological changes in two populations of the earthworm *A.*
554 *caliginosa*. Biological responses in energy storage and metabolic profiles differed between
555 earthworms derived from conventional farming and those from organic farming, indicating
556 that an acclimation mechanism to the agricultural pesticide occurs in the long-term pre-
557 exposed animals. The acclimation in pre-exposed animals was also evidenced by their higher
558 reaction to the chemical, with increased metabolic rate and burrowing activity compared to the
559 naïve animals, which ecological consequence is a lower pesticide concentration in the soil.
560 This original finding is of major interest in the frame of ecosystem resilience to global
561 changes. Whether this physiological adaptation is a general pattern of response against
562 fungicides or other pesticides would need to be confirmed with other molecules and
563 agricultural contexts.

564

565 **6. Acknowledgements**

566

567 The authors are grateful to Gabriel Nédelec and Philippe Leroy (INRA Rennes) and Christian
568 Mogis (GAEC La Mandardière, Pacé) for providing history of cultivation and access to their

569 agricultural fields. Many thanks to Barbara Martineau (ECOBIO) and to Catherine Rouillon
570 and Claude Briens (LÉRES) for their technical help during the microcosm experiment and the
571 chemical analyses, respectively. The authors are also grateful to Hans Christian Petersen for
572 providing statistical support and for the very constructive comments from both reviewers.
573 This work was funded by the European University of Brittany (UEB) in the frame of the
574 International Chair of Excellency in Agronomy and Environment granted to Claudia Wiegand
575 and to ECOBIO laboratory. It is also part of the LIA “ETSE” sustained by the CNRS-INEE,
576 the University of South Danemark (SDU) and the University of Rennes 1. The authors declare
577 they have no conflicts of interest.

578

579

580 **References**

581

- 582 Amorim, M.J.B., Rombke, J., Soares, A.M.V.M., 2005. Avoidance behaviour of *Enchytraeus*
583 *albidus*: Effects of Benomyl, Carbendazim, phenmedipham and different soil types.
584 *Chemosphere* 59, 501–510.
- 585 Anderson, M.P., Gronwald, J.W., 1991. Atrazine Resistance in a Velvetleaf (*Abutilon*
586 *theophrasti*) Biotype Due to Enhanced Glutathione S-Transferase Activity. *Plant Physiol.*
587 96, 104–109.
- 588 Binet, F., Fayolle, L., Pussard, M., Crawford, J.J., Traina, S.J., Tuovinen, O.H., 1998.
589 Significance of earthworms in stimulating soil microbial activity. *Biol. Fertil. Soils* 27,
590 79–84.
- 591 Binet, F., Kersanté, A., Munier-Lamy, C., Le Bayon, R.-C., Belgy, M.-J., Shipitalo, M.J., 2006.
592 Lumbricid macrofauna alter atrazine mineralization and sorption in a silt loam soil. *Soil*
593 *Biol. Biochem.* 38, 1255–1263.
- 594 Blouin, M., Hodson, M.E., Delgado, E.A., Baker, G., Brussaard, L., Butt, K.R., Dai, J.,
595 Dendooven, L., Peres, G., Tondoh, J.E., Cluzeau, D., Brun, J.-J., 2013. A review of
596 earthworm impact on soil function and ecosystem services. *Eur. J. Soil Sci.* 64, 161–182.
- 597 Bottinelli, N., Henry-des-Tureaux, T., Hallaire, V., Mathieu, J., Benard, Y., Duc Tran, T.,
598 Jouquet, P., 2010. Earthworms accelerate soil porosity turnover under watering
599 conditions. *Geoderma* 156, 43–47.
- 600 Bradford, M.M., 1976. A rapid and sensitive method for the quantitation of microgram
601 quantities of protein utilizing the principle of protein-dye binding. *Anal. Biochem.* 72,
602 248–254.
- 603 Brausch, J.M., Smith, P.N., 2009. Pesticide resistance from historical agricultural chemical
604 exposure in *Thamnocephalus platyurus* (Crustacea: Anostraca). *Environ. Pollut.* 157,
605 481–487.
- 606 Bromilow, R.H., Evans, A.A., Nicholls, P.H., 1999a. Factors affecting degradation rates of
607 five triazole fungicides in two soil types: 2. Field studies. *Pestic. Sci.* 55, 1135–1142.
- 608 Bromilow, R.H., Evans, A.A., Nicholls, P.H., 1999b. Factors affecting degradation rates of
609 five triazole fungicides in two soil types: 1. Laboratory incubations. *Pestic. Sci.* 55, 1129–
610 1134.
- 611 Brown, S.A.E., McKelvie, J.R., Simpson, A.J., Simpson, M.J., 2010. 1H NMR metabolomics of

612 earthworm exposure to sub-lethal concentrations of phenanthrene in soil. *Environ.*
613 *Pollut.* 158, 2117–2123.

614 Bundy, J., Sidhu, J., Rana, F., Spurgeon, D., Svendsen, C., Wren, J., Sturzenbaum, S., Morgan,
615 A.J., Kille, P., 2008. “Systems toxicology” approach identifies coordinated metabolic
616 responses to copper in a terrestrial non-model invertebrate, the earthworm *Lumbricus*
617 *rubellus*. *BMC Biol.* 6, 25.

618 Calow, P., 1991. Physiological costs of combating chemical toxicants: Ecological
619 implications. *Comp. Biochem. Physiol. Part C Comp. Pharmacol.* 100, 3–6.

620 Capowicz, Y., Bérard, A., 2006. Assessment of the effects of imidacloprid on the behavior
621 of two earthworm species (*Aporrectodea nocturna* and *Allolobophora icterica*) using 2D
622 terraria. *Ecotoxicol. Environ. Saf.* 64, 198–206.

623 Capowicz, Y., Dittbrenner, N., Rault, M., Triebkorn, R., Hedde, M., Mazzia, C., 2010.
624 Earthworm cast production as a new behavioural biomarker for toxicity testing.
625 *Environ. Pollut.* 158, 388–393.

626 Decaëns, T., Jiménez, J.J., 2002. Earthworm communities under an agricultural
627 intensification gradient in Colombia. *Plant Soil* 240, 133–143.

628 Dittbrenner, N., Triebkorn, R., Moser, I., Capowicz, Y., 2010. Physiological and
629 behavioural effects of imidacloprid on two ecologically relevant earthworm species
630 (*Lumbricus terrestris* and *Aporrectodea caliginosa*). *Ecotoxicology* 19, 1567–1573.

631 Donker, M.H., Zonneveld, C., Straalen, N.M., 1993. Early reproduction and increased
632 reproductive allocation in metal-adapted populations of the terrestrial isopod *Porcellio*
633 *scaber*. *Oecologia* 96, 316–323.

634 Edwards, C.A., Bohlen, P.J., 1996. *Biology and Ecology of Earthworms*, 3rd edition. ed.
635 Chapman and Hall, London.

636 Farenhorst, A., Topp, E., Bowman, B., Tomlin, A., 2000. Earthworm burrowing and
637 feeding activity and the potential for atrazine transport by preferential flow. *Soil Biol.*
638 *Biochem.* 32, 479–488.

639 Fisker, K.V., Sørensen, J.G., Damgaard, C., Pedersen, K.L., Holmstrup, M., 2011. Genetic
640 adaptation of earthworms to copper pollution: is adaptation associated with fitness
641 costs in *Dendrobaena octaedra*? *Ecotoxicology* 20, 563–573.

642 Folch, J., Lees, M., Sloane-Stanley, G.H., 1957. A simple method for the isolation and
643 purification of total lipids from animal tissues. *J. Biol. Chem.* 226, 497–509.

644 Fournier, D., Mutero, A., 1994. Modification of acetylcholinesterase as a mechanism of
645 resistance to insecticides. *Comp. Biochem. Physiol. C Pharmacol. Toxicol. Endocrinol.*
646 108, 19–31.

647 Gevaø, B., Semple, K.T., Jones, K.C., 2000. Bound pesticide residues in soils: a review.
648 *Environ. Pollut.* 108, 3–14.

649 Groppa, M.D., Benavides, M.P., 2008. Polyamines and abiotic stress: Recent advances.
650 *Amino Acids* 34, 35–45.

651 Gudbrandsen, M., Sverdrup, L.E., Aamodt, S., Stenersen, J., 2007. Short-term pre-
652 exposure increases earthworm tolerance to mercury. *Eur. J. Soil Biol.* 43, S261–S267.

653 Gupta, S.K., Sundararaman, V., 1991. Correlation between burrowing capability and
654 AChE activity in the earthworm, *Pheretima posthuma*, on exposure to carbaryl. *Bull.*
655 *Environ. Contam. Toxicol.* 46, 859–865.

656 Holmstrup, M., 2000. Field assessment of toxic effects on reproduction in the
657 earthworms *Aporrectodea longa* and *Aporrectodea rosea*. *Environ. Toxicol. Chem.* 19,
658 1781–1787.

659 Holmstrup, M., Sørensen, J.G., Overgaard, J., Bayley, M., Bindesbøl, A.-M., Slotsbo, S.,
660 Fisker, K.V., Maraldo, K., Waagner, D., Labouriau, R., Asmund, G., 2011. Body metal

661 concentrations and glycogen reserves in earthworms (*Dendrobaena octaedra*) from
662 contaminated and uncontaminated forest soil. *Environ. Pollut.* 159, 190–197.

663 Hugnes, M.S., Bull, C.M., Doube, B.M., 1996. Microcosm investigations into the influence
664 of sheep manure on the behaviour of the geophagous earthworms *Aporrectodea*
665 *trapezoides* and *Microscolex dubuis*. *Biol. Fertil. Soils* 22, 71–75.

666 Jansen, M., Coors, A., Stoks, R., De Meester, L., 2011. Evolutionary ecotoxicology of
667 pesticide resistance: a case study in *Daphnia*. *Ecotoxicology* 20, 543–551.

668 Jones, C.G., Lawton, J.H., Shachak, M., 1997. Positive and negative effects of organisms as
669 physical ecosystem engineers. *Ecology* 78, 1946–1957.

670 Jordan, D., Miles, R., Hubbard, V., Lorenz, T., 2004. Effect of management practices and
671 cropping systems on earthworm abundance and microbial activity in Sanborn Field: a
672 115-year-old agricultural field. *Pedobiologia* 48, 99–110.

673 Kanehisa, M., Goto, S., 2000. KEGG: Kyoto Encyclopedia of Genes and Genomes. *Nucleic*
674 *Acids Res.* 28, 27–30.

675 Khodayari, S., Moharramipour, S., Larvor, V., Hidalgo, K., Renault, D., 2013. Deciphering
676 the Metabolic Changes Associated with Diapause Syndrome and Cold Acclimation in the
677 Two-Spotted Spider Mite *Tetranychus urticae*. *PLoS ONE* 8, e54025.

678 Krasensky, J., Jonak, C., 2012. Drought, salt, and temperature stress-induced metabolic
679 rearrangements and regulatory networks. *J. Exp. Bot.* 63, 1593–1608.

680 Lamandé, M., Hallaire, V., Curmi, P., Pérès, G., Cluzeau, D., 2003. Changes of pore
681 morphology, infiltration and earthworm community in a loamy soil under different
682 agricultural managements. *CATENA* 54, 637–649.

683 Lankadurai, B., Nagato, E., Simpson, M., 2013. Environmental Metabolomics: An
684 Emerging Approach to Study Organism Responses to Environmental Stressors. *Environ.*
685 *Rev.*

686 Lavelle, P., Spain, A.V., 2001. *Soil Ecology*, Kluwer Academic Publishers. ed. Dordrecht,
687 The Netherlands.

688 Liang, H., Qiu, J., Li, L., Li, W., Zhou, Z., Liu, F., Qiu, L., 2012. Stereoselective dissipation of
689 epoxiconazole in grape (*Vitis vinifera* cv. Kyoho) and soil under field conditions.
690 *Chemosphere* 87, 982–987.

691 Liu, Y.-J., Zaprasis, A., Liu, S.-J., Drake, H.L., Horn, M.A., 2011. The earthworm
692 *Aporrectodea caliginosa* stimulates abundance and activity of phenoxyalkanoic acid
693 herbicide degraders. *ISME J.* 5, 473–485.

694 Lukkari, T., Taavitsainen, M., Soimasuo, M., Oikari, A., Haimi, J., 2004. Biomarker
695 responses of the earthworm *Aporrectodea tuberculata* to copper and zinc exposure:
696 differences between populations with and without earlier metal exposure. *Environ.*
697 *Pollut.* 129, 377–386.

698 Monard, C., Martin-Laurent, F., Vecchiato, C., Francez, A.J., Vandenkoornhuyse, P., Binet,
699 F., 2008. Combined effect of bioaugmentation and bioturbation on atrazine degradation
700 in soil. *Soil Biol. Biochem.* 40, 2253–2259.

701 Monard, C., Vandenkoornhuyse, P., Le Bot, B., Binet, F., 2011. Relationship between
702 bacterial diversity and function under biotic control: the soil pesticide degraders as a
703 case study. *ISME J.* 5, 1048–1056.

704 Mordaunt, C.J., Gevaio, B., Jones, K.C., Semple, K.T., 2005. Formation of non-extractable
705 pesticide residues: observations on compound differences, measurement and regulatory
706 issues. *Environ. Pollut.* 133, 25–34.

707 Nicolai, A., Filser, J., Lenz, R., Valérie, B., Charrier, M., 2012. Composition of body storage
708 compounds influences egg quality and reproductive investment in the land snail *Cornu*
709 *aspersum*. *Can. J. Zool.* 90, 1161–1170.

710 Nuutinen, V., 1992. Earthworm community response to tillage and residue management
711 on different soil types in southern Finland. *Soil Tillage Res.* 23, 221–239.

712 Paoletti, M.G., 1999. The role of earthworms for assessment of sustainability and as
713 bioindicators. *Agric. Ecosyst. Environ.* 74, 137–155.

714 Passeport, E., Benoit, P., Bergheaud, V., Coquet, Y., Tournebize, J., 2011. Epoxiconazole
715 degradation from artificial wetland and forest buffer substrates under flooded
716 conditions. *Chem. Eng. J.* 173, 760–765.

717 Pelosi, C., Barot, S., Capowicz, Y., Hedde, M., Vandebulcke, F., 2013. Pesticides and
718 earthworms. A review. *Agron. Sustain. Dev.* 1–30.

719 Pook, C., Lewis, C., Galloway, T., 2009. The metabolic and fitness costs associated with
720 metal resistance in *Nereis diversicolor*. *Mar. Pollut. Bull.* 58, 1063–1071.

721 Posthuma, L., 1990. Genetic Differentiation Between Populations of *Orchesella cincta*
722 (*Collembola*) from Heavy Metal Contaminated Sites. *J. Appl. Ecol.* 27, 609–622.

723 Posthuma, L., Van Straalen, N.M., 1993. Heavy-metal adaptation in terrestrial
724 invertebrates: A review of occurrence, genetics, physiology and ecological consequences.
725 *Comp. Biochem. Physiol. C Pharmacol. Toxicol. Endocrinol.* 106, 11–38.

726 R Development Core Team, 2008. R: A language and environment for statistical
727 computing. R Foundation for Statistical Computing, Vienna, Austria.

728 Rhee, H.J., Kim, E.-J., Lee, J.K., 2007. Physiological polyamines: simple primordial stress
729 molecules. *J. Cell. Mol. Med.* 11, 685–703.

730 Ribera, D., Narbonne, J.F., Arnaud, C., Saint-Denis, M., 2001. Biochemical responses of the
731 earthworm *Eisenia fetida andrei* exposed to contaminated artificial soil, effects of
732 carbaryl. *Soil Biol. Biochem.* 33, 1123–1130.

733 Rodríguez-Castellanos, L., Sanchez-Hernandez, J.C., 2007. Earthworm biomarkers of
734 pesticide contamination: Current status and perspectives. *J. Pestic. Sci.* 32, 360–371.

735 Schreck, E., Geret, F., Gontier, L., Treilhou, M., 2008. Neurotoxic effect and metabolic
736 responses induced by a mixture of six pesticides on the earthworm *Aporrectodea*
737 *caliginosa nocturna*. *Chemosphere* 71, 1832–1839.

738 Simpson, M.J., McKelvie, J.R., 2009. Environmental metabolomics: new insights into
739 earthworm ecotoxicity and contaminant bioavailability in soil. *Anal. Bioanal. Chem.* 394,
740 137–149.

741 Smith, R.G., McSwiney, C.P., Grandy, A.S., Suwanwaree, P., Snider, R.M., Robertson, G.P.,
742 2008. Diversity and abundance of earthworms across an agricultural land-use intensity
743 gradient. *Soil Tillage Res.* 100, 83–88.

744 Söchtig, W., Larink, O., 1992. Effect of soil compaction on activity and biomass of
745 endogeic lumbricids in arable soils. *Soil Biol. Biochem.* 24, 1595–1599.

746 Springett, J.A., Gray, R.A.J., 1992. Effect of repeated low doses of biocides on the
747 earthworm *Aporrectodea caliginosa* in laboratory culture. *Soil Biol. Biochem.* 24, 1739–
748 1744.

749 Thompson, A.R., 1971. Effects of nine insecticides on the numbers and biomass of
750 earthworms in pasture. *Bull. Environ. Contam. Toxicol.* 5, 577–586.

751 Wiegand, C., Pehkonen, S., Akkanen, J., Penttinen, O.-P., Kukkonen, J.V.K., 2007.
752 Bioaccumulation of paraquat by *Lumbriculus variegatus* in the presence of dissolved
753 natural organic matter and impact on energy costs, biotransformation and antioxidative
754 enzymes. *Chemosphere* 66, 558–566.

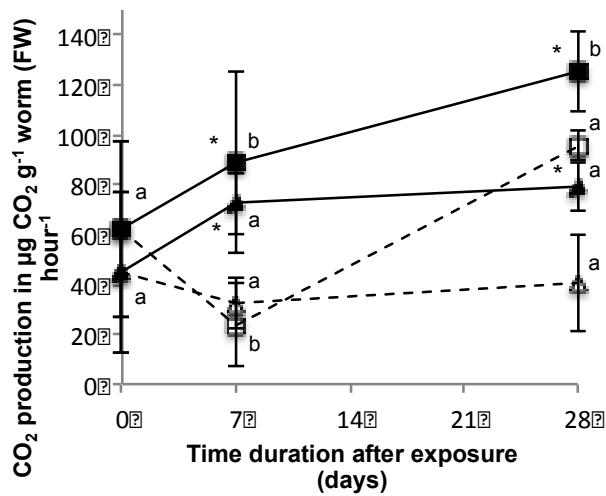
755 Wiegand, C., Pflugmacher, S., Giese, M., Frank, H., Steinberg, C., 2000. Uptake, Toxicity,
756 and Effects on Detoxication Enzymes of Atrazine and Trifluoroacetate in Embryos of
757 Zebrafish. *Ecotoxicol. Environ. Saf.* 45, 122–131.

758 Yasmin, S., D'Souza, D., 2010. Effects of Pesticides on the Growth and Reproduction of

759 Earthworm: A Review. Appl. Environ. Soil Sci. Vol. 2010, 1–9.
 760 Zhang, Y., Shen, G., Yu, Y., Zhu, H., 2009. The hormetic effect of cadmium on the activity of
 761 antioxidant enzymes in the earthworm *Eisenia fetida*. Environ. Pollut. 157, 3064–3068.
 762

763 **Fig1**

764 Metabolic rate ($\mu\text{g CO}_2 \text{ g}^{-1} \text{ worm (fresh weight) hour}^{-1}$) of pre-exposed (*square*) and naïve (*triangle*) *A.*
 765 *caliginosa* exposed to Epoxiconazole (*solid symbols, full lines*) or not exposed (*open symbols, dashed lines*) at
 766 day 0, 7 and 28. Mean values (N=5 worms per group) are presented with standard deviations as error bars.
 767 Significant differences are indicated with * between exposed and control worms and # between populations at
 768 each sampling time. Different letters (a or b) denote statistical differences between sampling times within the
 769 same group.



770

771

772

773

774

775

776

777

778

779

780

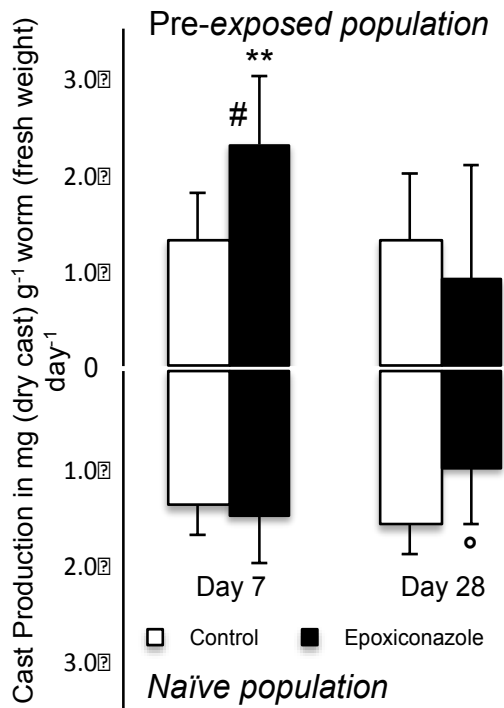
781

782

783 **Fig2**

784 Mean cast production (in g dry cast weight g⁻¹ earthworm body mass day⁻¹) of pre-exposed and naïve
 785 *Aporrectodea caliginosa* after exposure to epoxiconazole for 7 and 28 days (n=8). Error bars are standard
 786 deviations (SD). * indicates significant differences between exposed and control groups (student-t-test, ° p<0.1,
 787 * p<0.05, ** p<0.01) and # between earthworm populations.

788



789

790

791

792

793

794

795

796

797

798

799

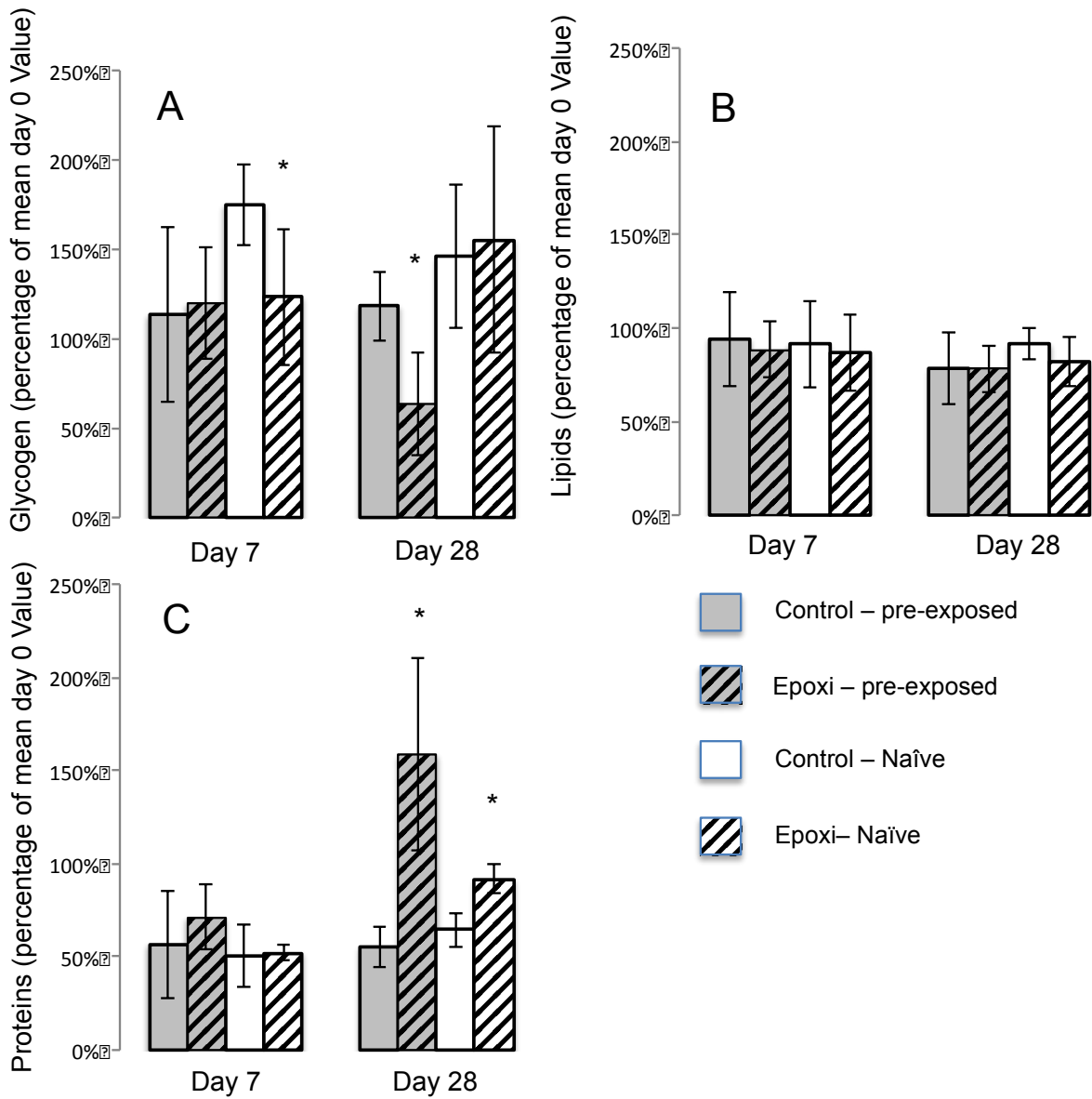
800

801

802 **Fig3**

803 Glycogen (A), Lipids (B), and Proteins (C) contents (percentage of mean of day 0 value) of pre-exposed and
 804 naïve *A. caliginosa* exposed to Epoxiconazole at day 7 and 28. Mean values (N=5 worm per group) are presented
 805 with standard deviations as *error bars*. Significant differences are indicated with * between exposed and control
 806 worms (Student-t-tests, $p < 0.1$).

807



808

809

810

811

812

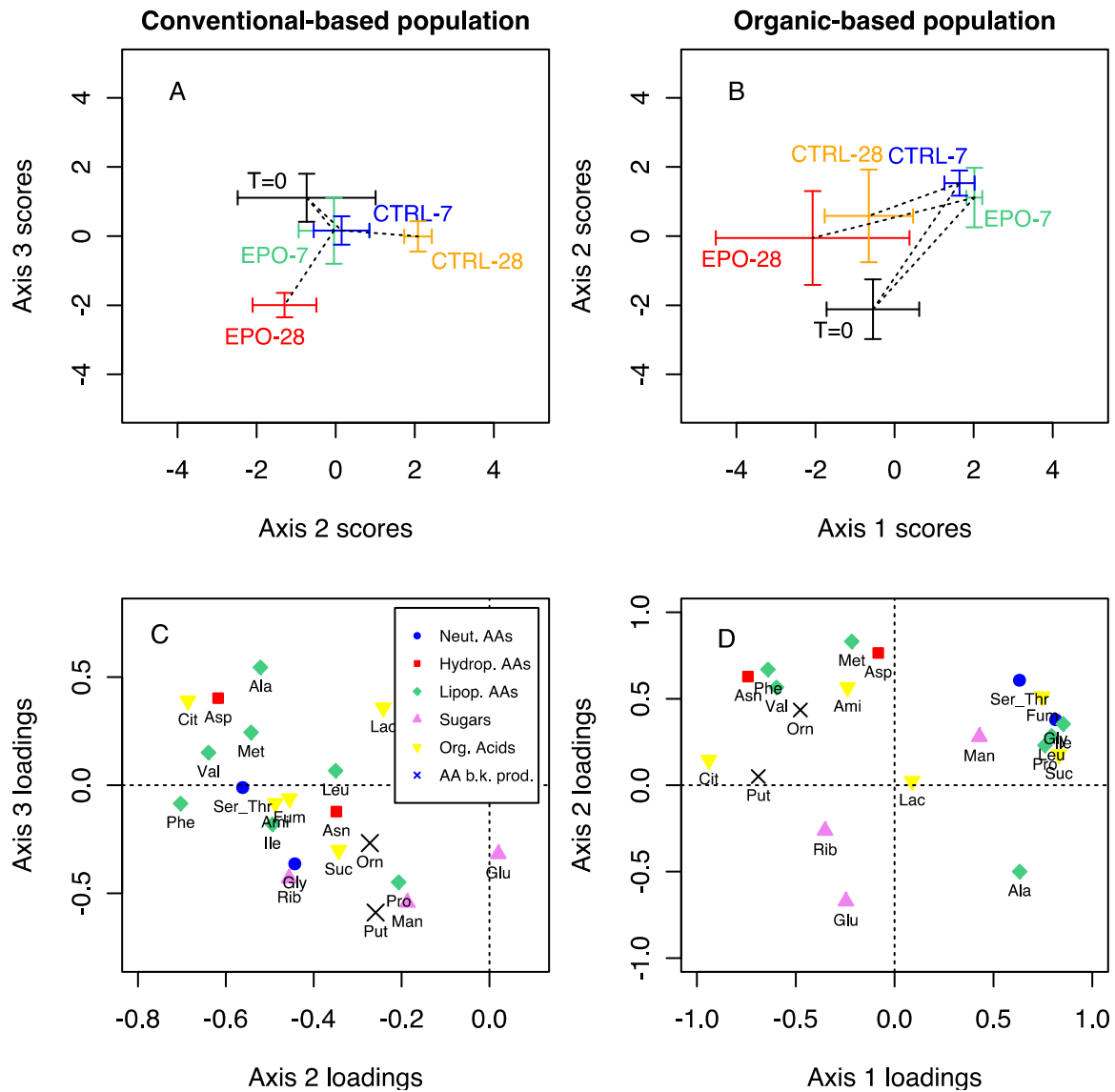
813

814

815 **Fig4**

816 Principal Component Analysis of metabolites data (22 variables) showing relationship between metabolite
 817 profiles and epoxiconazole exposure along time. A, B: Scores plots for conventional population (Axes 2 and 3)
 818 and organic population (Axes 1 and 2). Data are shown as crosses for both exposed and control groups means \pm
 819 standard error of the mean (SEM). Exposed and Control groups are joined by time order with dashed lines. C, D:
 820 Loadings plots for individual metabolites in the conventional population (axes 2 and 3) and in the organic
 821 population (axes 1 and 2). Metabolites are identified by their abbreviations and colored by functional groups
 822 listed in supplementary material (Table S4).

823



824

825

826

827

828

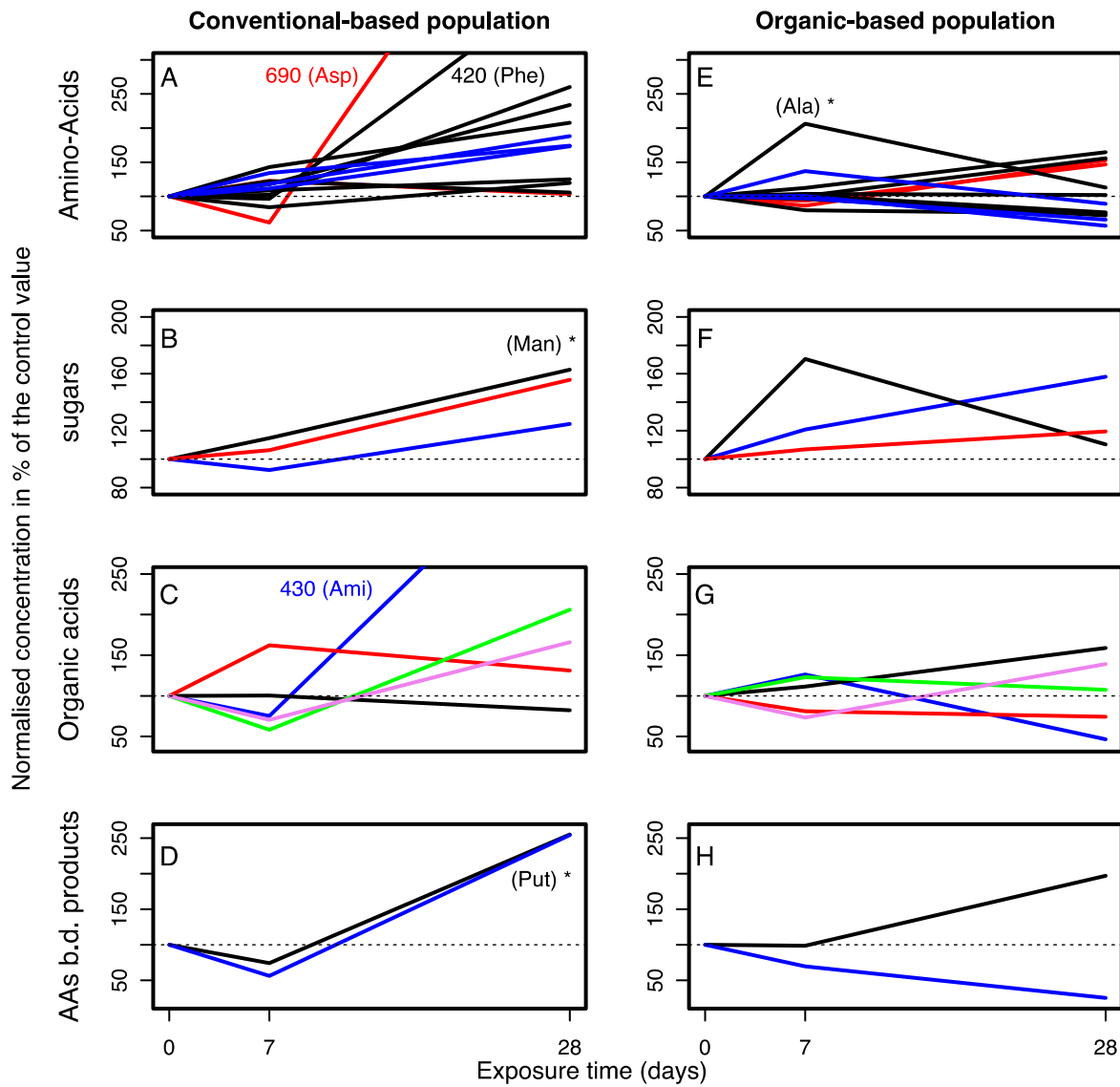
829

830 **Fig5**

831 Metabolite functional group responses to epoxiconazole, concentrations expressed as percentage of mean control
 832 value. A and E: amino-acids (blue=neutral, black=lipophilic, red=hydrophilic) B and F: sugars (blue=glucose,
 833 black=mannose, red=ribose) C and G: Krebs' cycle intermediates (blue = aminobutyrate, black = citrate, red =
 834 fumarate, green= lactate, violet= succinate) D and H: amino acids degradation products (black=ornithine,
 835 blue=putrescine). * indicates significant differences between exposed and control groups (Student t-tests, $p < 0.1$).

836

837



838

839

840